



Liberia COVID-19 Daily Sitrep 103 (26th June 2020)

Summary of COVID-19 Cases by Reporting County, Liberia, 16 March – 26 June 2020

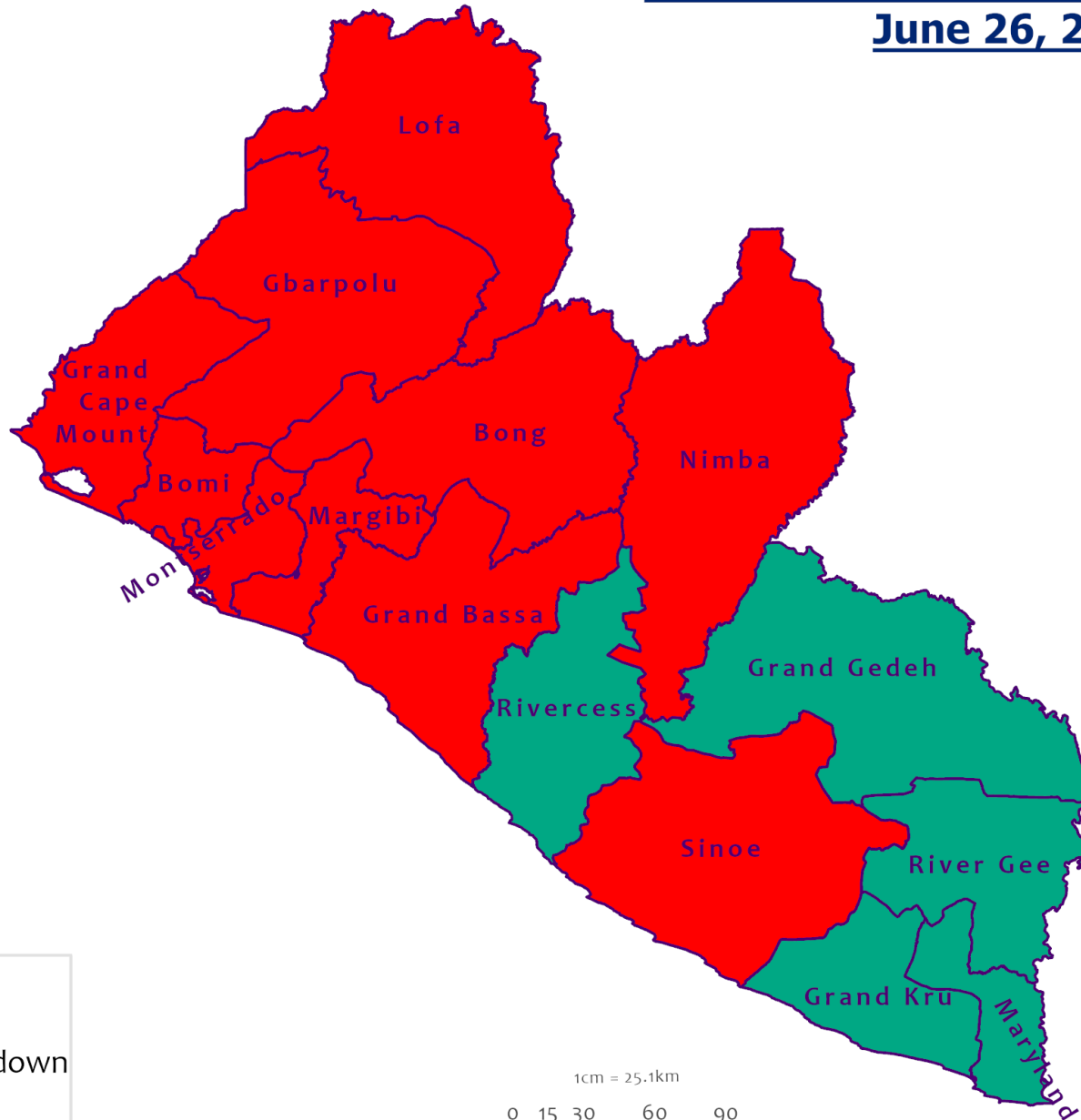
County			Confirmed Cumulative Cases
	Laboratory Confirmed Cases	Cases on Contact List	
Bomi	0	0	3
Bong	0	0	22
Gbarpolu	0	0	10
Grand Bassa	0	0	10
Grand Cape Mount	0	0	1
Grand Kru	0	0	1
Lofa	0	0	6
Margibi	2	0	44
Maryland	0	0	1
Montserrado	37	0	603
Nimba	6	0	25
River Gee	0	0	1
Sinoe	0	0	2
NATIONAL	45	0	729

Demographic Breakdown (Gender & Age) of Confirmed COVID-19 Cases (16 March – 26 June 2020)




County	<15 years		15 - 34		35 - 54		55+		All ages		Total Confirmed
	M	F	M	F	M	F	M	F	M	F	
Bomi	0	1	0	0	0	1	0	1	0	3	3
Bong	0	0	0	2	6	6	6	2	12	10	22
Gbarpolu	1	2	0	2	3	1	1	0	5	5	10
Grand Bassa	1	0	2	6	0	1	0	0	3	7	10
Grand Cape Mount	0	0	0	0	0	0	1	0	1	0	1
Grand Kru	0	0	1	0	0	0	0	0	1	0	1
Lofa	0	0	0	0	3	0	3	0	6	0	6
Margibi	2	2	7	7	9	5	6	6	24	20	44
Maryland	0	0	1	0	0	0	0	0	1	0	1
Montserrado	32	31	150	78	158	63	62	29	402	201	603
Nimba	0	0	6	2	12	2	1	2	19	6	25
River Gee	0	0	0	0	1	0	0	0	1	0	1
Sinoe	0	0	0	0	2	0	0	0	2	0	2
National	36	36	167	97	194	79	80	40	477	252	729

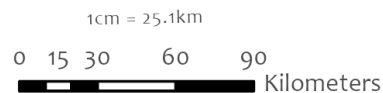


Counties COVID-19 Status in Liberia June 26, 2020



County Status

-  Preparedness
-  28-Day Countdown
-  Response



Data Source: NPHI/MoH

Demographic Breakdown (Gender & Age) of Confirmed COVID-19 Deaths (16 March – 26 June 2020)

County	<15 years		15 - 34		35 - 54		55+		All ages		Total Confirmed
	M	F	M	F	M	F	M	F	M	F	
Bong	0	0	1	0	0	0	3	0	4	0	4
Gbarpolu	0	0	0	0	1	0	1	0	2	0	2
Grand Bassa	0	0	0	0	0	0	0	0	0	0	0
Grand Kru	0	0	0	0	0	0	0	0	0	0	0
Lofa	0	0	0	0	0	0	2	0	2	0	2
Margibi	0	0	0	0	0	0	0	1	0	1	1
Maryland	0	0	0	0	0	0	0	0	0	0	0
Montserrado	0	0	0	0	8	4	7	2	15	6	21
Nimba	0	0	0	0	2	1	1	0	3	1	4
River Gee	0	0	0	0	0	0	0	0	0	0	0
Sinoe	0	0	0	0	0	0	0	0	0	0	0
National	0	0	1	0	11	5	14	3	26	8	34

Summary of COVID-19 Deaths by Reporting County, Liberia, 16 March – 26 June 2020

County	DAILY REPORT								Cumulative Deaths
	New Suspected Deaths	Laboratory Confirmed Deaths						Confirmed Deaths on Contact List	
		COVID-19 Treatment Unit	Total in COVID-19 Treatment Unit	Health Facility	Total in Health Facility	Community	Total in Community		
Bong	0	0	0	0	3	0	1	0	4
Gbarpolu	0	0	0	0	2	0	0	0	2
Grand Bassa	0	0	0	0	0	0	0	0	0
Grand Kru	0	0	0	0	0	0	0	0	0
Lofa	0	0	0	0	2	0	1	0	3
Maryland	0	0	0	0	0	0	0	0	0
Margibi	0	0	0	0	1	0	0	0	1
Montserrado	0	0	5	0	5	0	11	0	21
Nimba	0	0	0	0	3	0	1	0	4
River Gee	0	0	0	0	0	0	0	0	0
Sinoe	0	0	0	0	0	0	0	0	0
National	0	0	5	0	15	0	14	0	34

The Liberia Case Fatality rate (CFR) officially considered is for deaths that occurred among patients in care at the COVID-19 treatment units across the country. As of 1 June 2020, a total of 4 deaths have been recorded CFR=1.17%. The country is however keeping active surveillance on community deaths and deaths in non COVID-19 treatment health units.

Daily and Cumulative Healthcare Worker (HCW) COVID-19 Cases and Deaths by County, Liberia, 16 March – 26 June 2020

County	DAILY REPORT						CUMULATIVE CASES (ALIVE & DEAD)	
	New Suspected & High Risk Cases (Alive)			New Suspect Death	Laboratory Confirmed Cases	Confirmed Cases on Contact List	Confirmed	Deaths
	Suspect	High Risk	Total					
Bong	0	0	0	0	0	0	14	3
Gbarpolu	0	0	0	0	0	0	1	1
Grand Bassa	0	0	0	0	0	0	3	0
Grand Kru	0	0	0	0	0	0	0	0
Lofa	0	0	0	0	0	0	1	0
Margibi	0	0	0	0	0	0	9	1
Maryland	0	0	0	0	0	0	0	0
Montserrado	0	0	0	0	0	0	36	1
Nimba	0	0	0	0	0	0	1	0
River Gee	0	0	0	0	0	0	0	0
Sinoe	0	0	0	0	0	0	0	0
NATIONAL	0	0	0	0	0	0	65	6

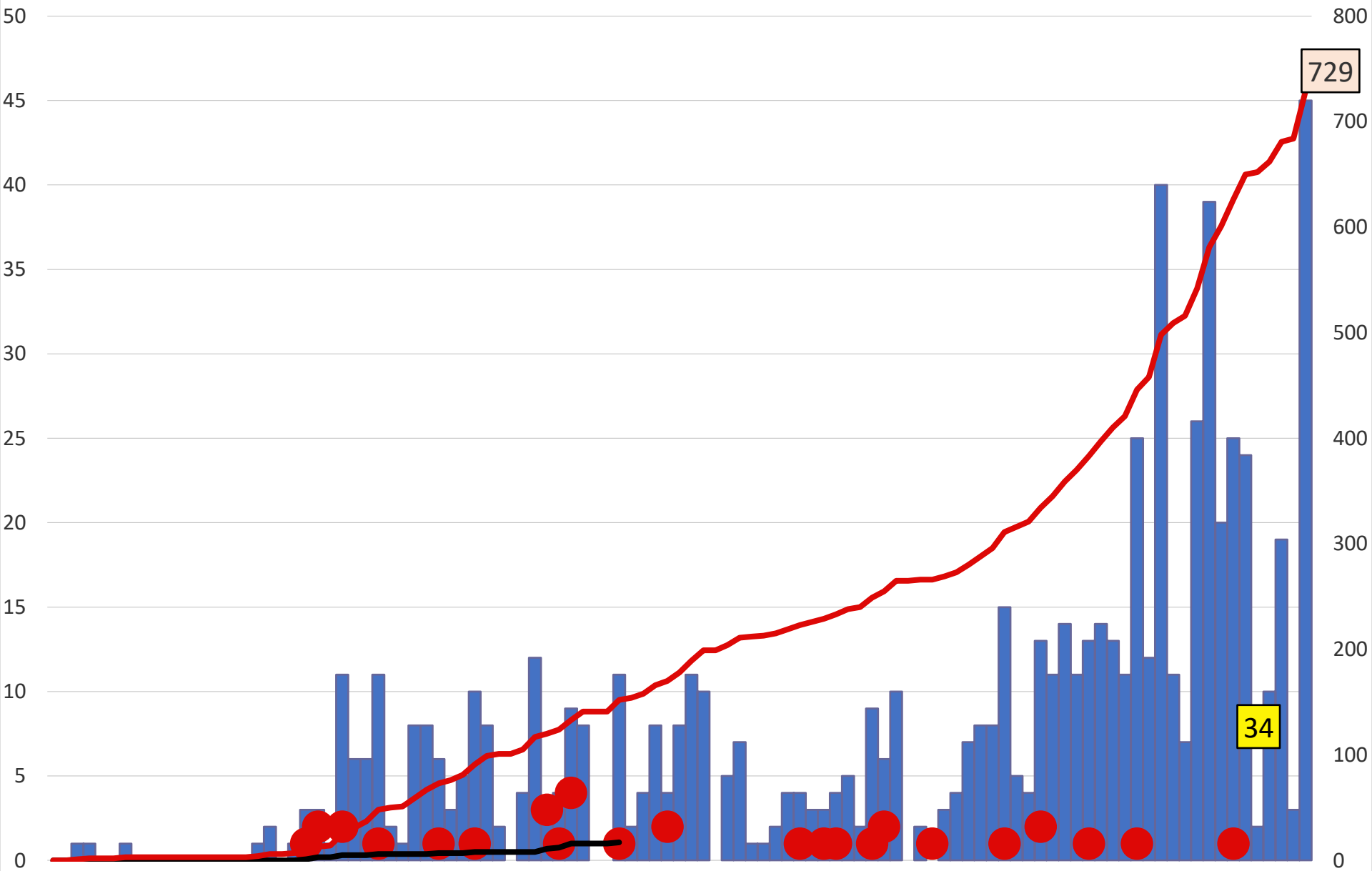
Cadre Cases and Deaths by Health Care Workers (16 March – 26 June 2020)

Health Care Worker Cadre	Montserrat		Margibi		Nimba		River Gee		Sinoe		Grand Kru		Gbarpolu		Bong		Lofa		Grand Bassa		National (Total)	
	Cases	Deaths	Cases	Deaths	Cases	Deaths	Cases	Deaths	Cases	Deaths	Cases	Deaths	Cases	Deaths	Cases	Deaths	Cases	Deaths	Cases	Deaths	Cases	Deaths
Doctors	5	0	0	0	1	0	0	0	0	0	0	0	0	0	1	0	0	0	0	0	7	0
Pharmacists	1	0	0	0	0	0	0	0	0	0	0	0	0	0	0	0	0	0	0	0	1	0
Nurses	15	1	3	0	0	0	0	0	0	0	0	0	1	1	9	1	0	0	1	0	29	3
Radiologist	1	0	0	0	0	0	0	0	0	0	0	0	0	0	0	0	0	0	0	0	1	0
Physician Assistants	0	0	0	0	0	0	0	0	0	0	0	0	0	0	0	0	0	0	0	0	0	0
Lab Technician	4	0	1	0	1	0	0	0	0	0	0	0	0	0	0	0	1	0	0	0	7	0
Environmental Health Technicians	6	0	0	0	0	0	0	0	0	0	0	0	0	0	0	0	0	0	0	0	6	0
Microbiologist	1	0	0	0	0	0	0	0	0	0	0	0	0	0	0	0	0	0	0	0	1	0
Epidemiologist	2	0	0	0	0	0	0	0	0	0	0	0	0	0	0	0	0	0	0	0	2	0
Dieticians	0	0	5	1	0	0	0	0	0	0	0	0	0	0	0	0	0	0	0	0	5	1
Dispenser	0	0	0	0	0	0	0	0	0	0	0	0	0	0	2	1	0	0	0	0	2	1
Licensed Practical Nurse (LPN)	0	0	0	0	0	0	0	0	0	0	0	0	0	0	1	1	0	0	0	0	1	1
Psychosocial Worker	1	0	0	0	0	0	0	0	0	0	0	0	0	0	0	0	0	0	0	0	1	0
Hygienist	0	0	0	0	0	0	0	0	0	0	0	0	0	1	0	0	0	0	0	0	1	0
Total:	36	1	9	1	2	0	0	0	0	0	0	0	1	1	14	3	1	0	1	0	64	6

Suspected and High Risk Cases and Deaths (16 March – 26 June 2020)

County	New Suspected	Cumulative Suspected	New High Risk	Cumulative High Risk	New Suspected Deaths	Cumulative Suspected Deaths
Montserrado	27	4705	0	0	0	76
Margibi	0	3	0	24	0	1
Maryland	0	17	0	13	0	4
Bong	0	13	0	53	0	2
River Gee	0	5	0	8	0	0
Lofa	0	43	0	36	0	35
Grand Cape Mount	0	21	0	0	0	0
Bomi	0	2	0	21	0	0
Sinoe	0	30	0	43	0	1
Grand Kru	0	14	0	21	0	1
Gbarpolu	0	26	0	13	0	0
Grand Bassa	0	43	0	32	0	0
Nimba	2	123	0	145	0	11
National	29	5045	0	409	0	131

EPI-Curve of Confirmed Cases and Deaths



COVID-19 Cases in Liberia - June 26, 2020

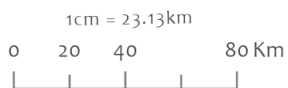
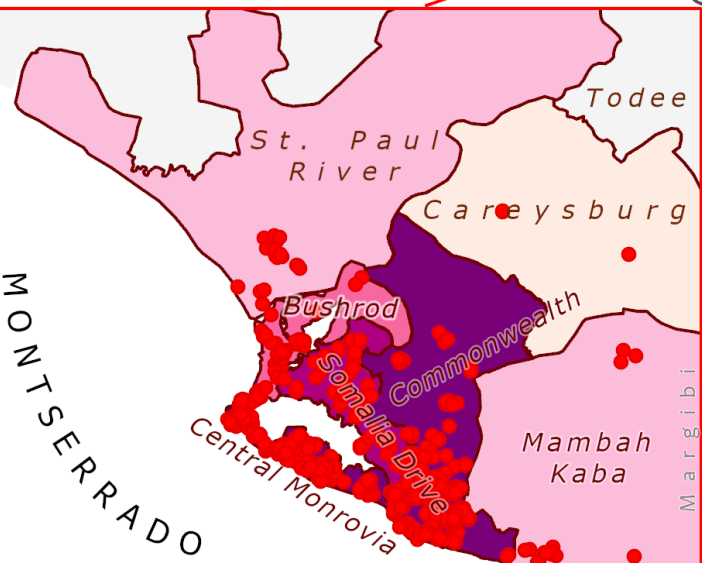
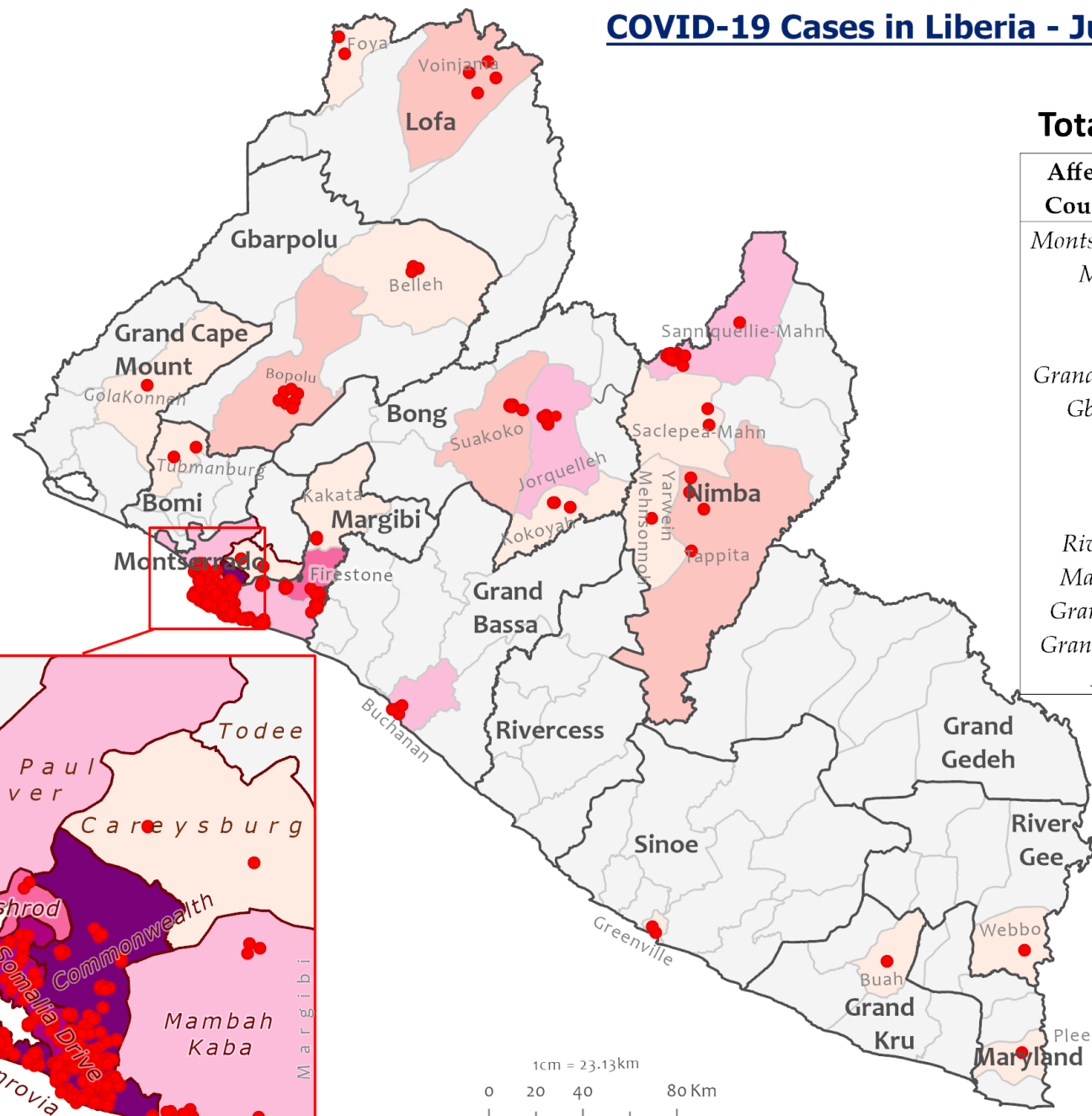
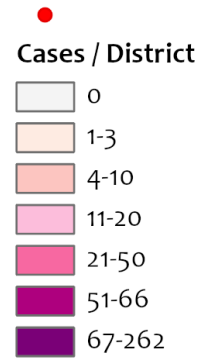
Total Cases: 729

Affected Counties	Cumulative Cases
Montserrado	600
Margibi	44
Nimba	25
Bong	22
Grand Bassa	13
Gbarpolu	10
Lofa	6
Bomi	3
Sinoe	2
River Gee	1
Maryland	1
Grand Kru	1
Grand Cape Mount	1



Legend

Confirmed cases



Data Source: NPHIL/MoH

Precautionary Observation Centers (POC): Admission and Discharges

County	Precautionary Observation Centers				Cumulative Move to Treatment
	New admissions	Currently in POC	Daily Discharges	Cumulative Discharges (not including transferred)	
Bomi	0	0	0	0	0
Bong	0	0	0	0	0
Gbarpolu	0	0	0	0	0
Grand Bassa	0	3	0	30	0
Margibi	0	30	0	48	0
Montserrado	0	63	0	56	0
Nimba	0	0	0	31	0
Sinoe	0	0	2	128	0
Lofa	0	9	0	194	0
NATIONAL	0	105	2	487	0

Treatment Unit Daily Report – June 26, 2020

14 Military Hospital Treatment Unit						
New admissions	Daily Discharges	Cumulative Recoveries	Daily Deaths	Cumulative Deaths	*Currently in treatment	Available Bed Occupancy %
4	5	259	0	5	119	108%

Demographic Breakdown of Cases at 14 Military Hospital											
Total Census	Total Adult	Total Children	Total Female	Total Male	Total Confirm	Others	Pregnant	Children			
								<1	1-5	6-10	11-17
119	103	16	45	74	118	1	2	3	2	3	8

*118 confirmed cases + 1 Special case = 119 total patients

Recoveries from Treatment Units (16 March – 26 June 2020)

Treatment Unit	New admissions	Cumulative admissions	Recoveries	Cumulative Recoveries
14 Military Hospital, Montserrado	4	385	5	261
Chief Jallahlone Hospital, Gbarpolu	0	3	0	1
Jackson F. Doe Hospital, Nimba	0	2	0	1
E&J Medical Center, Nimba	0	1	0	0
Ganta Methodist Hospital, Nimba	0	1	0	1
Pleebo Health Center, Maryland	0	1	0	1
Rally Time Hospital, Grand Kru	0	0	0	1
Fish Town Hospital, River Gee	0	1	0	1
St. Timothy Hospital, Grand Cape Mount	0	1	0	0
Liberia Government Hospital, Bomi	0	2	0	0
Tellewoyan Hospital, Lofa	0	5	0	2
Phebe Hospital, Bong	0	14	0	0
Liberia Government Hospital, Grand Bassa	0	4	0	0
Arcelor Mittal, Grand Bassa	0	5	0	5
Duside Hospital, Margibi	0	26	1	16
F. J. Grant Hospital, Sinoe	0	2	0	1
Total	4	453	6	291

Admissions, Currently in Treatment, and Discharges

COVID-19 Treatment Units									
Treatment Unit	New admissions	Cumulative admissions	Discharges	Cumulative Discharges	Currently in Treatment Unit	Total Males	Total Females	0-35 yrs	36+ yrs
Chief Jallahlone Hospital, Gbarpolu	0	3	0	1	0	0	0	0	0
Jackson F. Doe Hospital, Nimba	0	2	0	1	0	0	0	0	0
E&J Hospital, Nimba	0	1	0	0	1	1	0	0	1
Ganta Methodist Hospital, Nimba	0	1	0	1	0	0	0	0	0
St. Timothy Hospital, Grand Cape Mount	0	1	0	0	1	1	0	0	1
Tellewoyan Hospital, Lofa	0	5	0	2	3	3	0	0	3
Phebe Hospital, Bong	0	14	0	0	14	7	7	4	10
Liberia Government Hospital, Bomi	0	2	0	0	2	0	2	1	1
Arcelor Mittal, Grand Bassa	0	5	0	5	0	0	0	0	0
Liberia Government Hospital, Grand Bassa	0	4	0	0	3	2	1	2	1
Duside Hospital, Margibi	0	26	1	16	10	6	4	3	7
F. J. Grant Hospital, Sinoe	0	2	0	1	1	1	0	0	1
Total	0	66	1	27	35	21	14	10	25

Laboratory Samples Evaluated – June 26, 2020

Laboratory	Total	New Positive	Repeat Positive	Initial Negative	Repeat Test Negative	Pending Lab Result
NPHRL	262	45	9	139	33	36
Total	262	45	9	139	33	36

Summary of COVID-19 Contact Tracing in Response Counties

County	New Contacts Line listed	Cumulative Contacts	No. of Health Care Workers as Contacts	Cumulative no. of Health Care Workers as contacts	Contacts became a case	Cumulative contacts that became a case	Contacts Completed 14 Days	Cumulative Contacts Completing 14 Days	Contacts Under Follow-up	Contacts lost to Follow-up
Montserrado	29	3310	0	326	0	143	33	2626	621	3
Margibi	0	304	0	91	0	22	0	178	104	0
Grand Bassa	0	130	0	64	0	9	13	92	29	0
Sinoe	0	128	0	15	0	0	2	126	0	0
Gbarpolu	0	87	0	13	0	6	0	47	34	0
Lofa	0	333	0	53	0	3	0	261	72	0
Nimba	5	487	0	41	0	7	0	392	121	2
Bong	37	135	8	29	2	14	0	0	119	2
Grand CapeMount	0	21	0	0	0	0	0	0	21	0
Bomi	0	39	0	5	0	0	0	0	34	0
National	71	4974	11	637	2	204	48	3722	1155	7

Active Case Finding (16 March – 26 June 2020)

County	Visitation				Identification, Investigation & Testing								Supervision		
	No. of communities Assigned	No. of communities Visited	No. of Households Assigned	No. of Households Visited	Sick persons Identified	Cumulative Sick persons identified	Sick persons referred for Investigation	Cumulative Sick person referred for Investigation	Sick persons Investigated	Cumulative Sick persons Investigated	Sick persons investigated and referred for testing	Cumulative Sick persons investigated and referred for testing	No. of Sick persons followed-up today	No. of supervision visits	No. of Supervisory Calls
Bomi	127	21	431	431	12	12	12	12	12	12	12	0	4	3	6
Bong	25	72	15564	807	14	14	14	14	14	14	0	0	2	0	0
Montserrado	250	0	0	58403	0	417	0	282	0	263	0	214	0	0	0
Margibi	15	15	15	125	0	4	0	4	0	16	0	10	7	8	7
Maryland	36	36	416	416	38	426	7	379	7	379	0	0	4	0	0
Grand Cape Mount	1	1	19	19	0	0	0	0	0	0	0	0	0	0	0
Sinoe	90	90	5232	2534	0	152	0	152	0	152	1	1	0	6	2
Grand Kru	75	50	1000	1000	2	7	2	7	2	7	1	7	2	5	3
Gbarpolu	52	40	1520	275	0	25	0	25	0	25	0	12	0	4	0
Grand Bassa	19	19	234	234	5	110	5	110	5	110	0	0	0	0	0
Nimba	430	381	2460	2136	1	36	2	36	2	36	2	24	3	0	0
Lofa	94	94	652	652	0	43	0	43	0	43	0	43	0	58	99
National	1195	800	27309	66798	67	1122	23	940	37	933	16	311	20	84	117

Thank you for Listening