



Liberia COVID-19 Daily Sitrep 127 (20th July 2020)

Summary of COVID-19 Cases by Reporting County, Liberia, 16 March – 20 July 2020

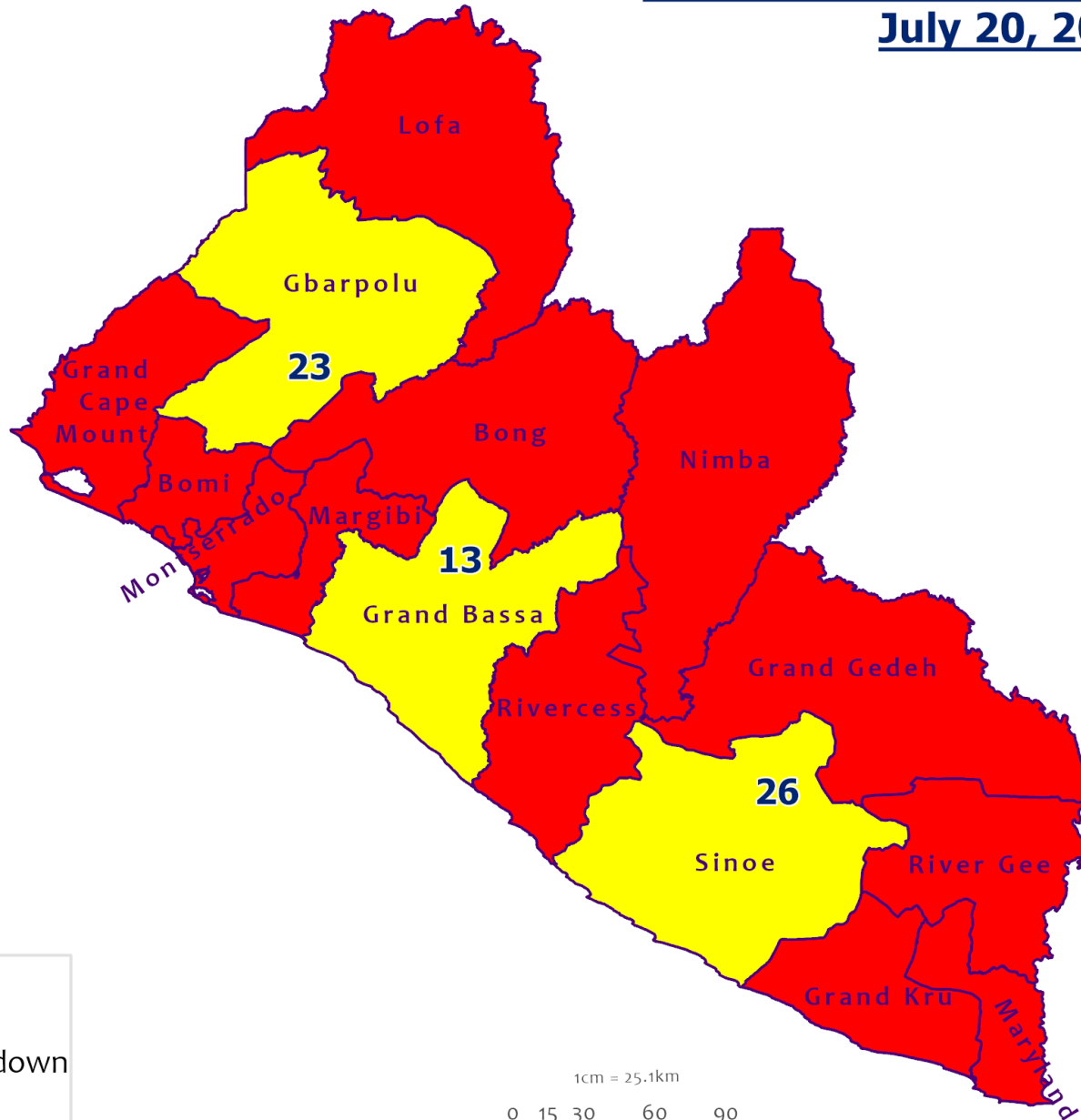
| County | | | Confirmed Cumulative Cases |
|------------------|--------------------|--------------------------|-------------------------------|
| | Confirmed Cases | Cases on Contact List | |
| Bomi | 0 | 0 | 14 |
| Bong | 0 | 0 | 35 |
| Gbarpolu | 0 | 0 | 10 |
| Grand Bassa | 0 | 0 | 10 |
| Grand Cape Mount | 0 | 0 | 1 |
| Grand Kru | 0 | 0 | 9 |
| Grand Gedeh | 1 | 0 | 1 |
| Lofa | 0 | 0 | 40 |
| Margibi | 0 | 0 | 63 |
| Maryland | 0 | 0 | 22 |
| Montserrado | 0 | 0 | 809 |
| Nimba | 0 | 0 | 52 |
| Rivercess | 0 | 0 | 1 |
| River Gee | 0 | 0 | 36 |
| Sinoe | 0 | 0 | 5 |
| NATIONAL | 1 | 0 | 1108 |

Demographic Breakdown (Gender & Age) of Confirmed COVID-19 Cases (16 March – 20 July 2020)

| County | <15 years | | 15 - 34 | | 35 - 54 | | 55+ | | All ages | | Total Confirmed |
|------------------|-----------|-----------|------------|------------|------------|------------|------------|-----------|------------|------------|-----------------|
| | M | F | M | F | M | F | M | F | M | F | |
| Bomi | 2 | 2 | 1 | 2 | 4 | 2 | 0 | 1 | 7 | 7 | 14 |
| Bong | 3 | 1 | 1 | 5 | 8 | 7 | 7 | 3 | 19 | 16 | 35 |
| Gbarpolu | 1 | 2 | 0 | 2 | 3 | 1 | 1 | 0 | 5 | 5 | 10 |
| Grand Bassa | 1 | 0 | 2 | 6 | 0 | 1 | 0 | 0 | 3 | 7 | 10 |
| Grand Cape Mount | 0 | 0 | 0 | 0 | 0 | 0 | 1 | 0 | 1 | 0 | 1 |
| Grand Kru | 0 | 0 | 2 | 3 | 1 | 2 | 1 | 0 | 4 | 5 | 9 |
| Grand Gedeh | 0 | 0 | 0 | 0 | 1 | 0 | 0 | 0 | 1 | 0 | 1 |
| Lofa | 2 | 2 | 8 | 3 | 12 | 5 | 7 | 1 | 29 | 11 | 40 |
| Margibi | 4 | 3 | 13 | 9 | 15 | 6 | 7 | 6 | 39 | 24 | 63 |
| Maryland | 1 | 0 | 8 | 4 | 5 | 1 | 1 | 2 | 15 | 7 | 22 |
| Montserrado | 36 | 35 | 209 | 106 | 212 | 89 | 83 | 39 | 540 | 269 | 809 |
| Nimba | 0 | 2 | 13 | 5 | 24 | 2 | 3 | 3 | 40 | 12 | 52 |
| Rivercess | 0 | 0 | 0 | 1 | 0 | 0 | 0 | 0 | 0 | 1 | 1 |
| River Gee | 0 | 0 | 4 | 3 | 19 | 5 | 5 | 0 | 28 | 8 | 36 |
| Sinoe | 0 | 0 | 1 | 0 | 3 | 1 | 0 | 0 | 4 | 1 | 5 |
| National | 50 | 47 | 262 | 149 | 307 | 122 | 116 | 55 | 735 | 373 | 1108 |



Counties COVID-19 Status in Liberia July 20, 2020



County Status

- Preparedness
- 28-Day Countdown
- Response

1cm = 25.1km

0 15 30 60 90
Kilometers



Data Source: NPHIL/MoH

Demographic Breakdown (Gender & Age) of Confirmed COVID-19 Deaths (16 March – 20 July 2020)

| County | <15 years | | 15 - 34 | | 35 - 54 | | 55+ | | All ages | | Total Confirmed |
|-----------------|-----------|----------|----------|----------|-----------|-----------|-----------|-----------|-----------|-----------|-----------------|
| | M | F | M | F | M | F | M | F | M | F | |
| Bong | 0 | 0 | 1 | 0 | 0 | 0 | 3 | 1 | 4 | 1 | 5 |
| Gbarpolu | 0 | 0 | 0 | 0 | 1 | 0 | 1 | 0 | 2 | 0 | 2 |
| Grand Bassa | 0 | 0 | 0 | 0 | 0 | 0 | 0 | 0 | 0 | 0 | 0 |
| Grand Kru | 0 | 0 | 0 | 0 | 0 | 0 | 0 | 0 | 0 | 0 | 0 |
| Lofa | 0 | 0 | 1 | 0 | 0 | 1 | 6 | 1 | 7 | 2 | 9 |
| Margibi | 0 | 0 | 0 | 1 | 1 | 1 | 0 | 2 | 1 | 4 | 5 |
| Maryland | 0 | 0 | 0 | 0 | 0 | 0 | 1 | 1 | 1 | 1 | 2 |
| Montserrado | 0 | 0 | 1 | 0 | 7 | 7 | 14 | 7 | 22 | 14 | 36 |
| Nimba | 0 | 0 | 2 | 0 | 3 | 1 | 3 | 0 | 8 | 1 | 9 |
| Rivercess | 0 | 0 | 0 | 1 | 0 | 0 | 0 | 0 | 0 | 1 | 1 |
| River Gee | 0 | 0 | 0 | 0 | 0 | 0 | 0 | 0 | 0 | 0 | 0 |
| Sinoe | 0 | 0 | 1 | 0 | 0 | 0 | 0 | 0 | 1 | 0 | 1 |
| National | 0 | 0 | 6 | 2 | 12 | 10 | 28 | 12 | 46 | 24 | 70 |

Summary of COVID-19 Deaths by Reporting County, Liberia, 16 March – 20 July 2020

| County | DAILY REPORT | | | | | | | | Cumulative Deaths |
|-----------------|----------------------|-----------------------------|----------------------------------|-----------------|--------------------------|-----------|--------------------|----------------------------------|-------------------|
| | New Suspected Deaths | Laboratory Confirmed Deaths | | | | | | Confirmed Deaths on Contact List | |
| | | COVID-19 Treatment Unit | Total in COVID-19 Treatment Unit | Health Facility | Total in Health Facility | Community | Total in Community | | |
| Bong | 0 | 0 | 0 | 0 | 4 | 0 | 1 | 0 | 5 |
| Gbarpolu | 0 | 0 | 0 | 0 | 1 | 0 | 0 | 0 | 1 |
| Grand Bassa | 0 | 0 | 0 | 0 | 0 | 0 | 0 | 0 | 0 |
| Grand Kru | 0 | 0 | 0 | 0 | 0 | 0 | 0 | 0 | 0 |
| Lofa | 0 | 0 | 0 | 0 | 5 | 0 | 4 | 0 | 9 |
| Maryland | 0 | 0 | 0 | 0 | 2 | 0 | 0 | 0 | 2 |
| Margibi | 0 | 0 | 0 | 0 | 5 | 0 | 0 | 0 | 5 |
| Montserrado | 0 | 0 | 6 | 0 | 16 | 0 | 15 | 0 | 37 |
| Nimba | 0 | 0 | 1 | 0 | 4 | 0 | 4 | 0 | 9 |
| Rivercess | 0 | 0 | 0 | 0 | 1 | 0 | 0 | 0 | 1 |
| River Gee | 0 | 0 | 0 | 0 | 0 | 0 | 0 | 0 | 0 |
| Sinoe | 0 | 0 | 0 | 0 | 1 | 0 | 0 | 0 | 1 |
| National | 0 | 0 | 7 | 0 | 39 | 0 | 24 | 0 | 70 |

The Liberia Case Fatality rate (CFR) officially considered is for deaths that occurred among patients in care at the COVID-19 treatment units across the country. As of 13 July 2020 , a total of 7 deaths have been recorded CFR=0.6%. The country is however keeping active surveillance on community deaths and deaths in non COVID-19 treatment health units.

Daily and Cumulative Healthcare Worker (HCW) COVID-19 Cases and Deaths by County, Liberia, 16 March – 20 July 2020

| County | DAILY REPORT | | | | | | CUMULATIVE CASES (ALIVE & DEAD) | |
|-----------------|--|-----------|----------|-------------------------|----------------------------------|---------------------------------------|------------------------------------|----------|
| | New Suspected & High Risk Cases (Alive) | | | New Suspect Death | Laboratory Confirmed Cases | Confirmed Cases on Contact List | Confirmed | Deaths |
| | Suspect | High Risk | Total | | | | | |
| Bomi | 0 | 0 | 0 | 0 | 0 | 0 | 3 | 0 |
| Bong | 0 | 0 | 0 | 0 | 0 | 0 | 19 | 3 |
| Gbarpolu | 0 | 0 | 0 | 0 | 0 | 0 | 1 | 1 |
| Grand Bassa | 0 | 0 | 0 | 0 | 0 | 0 | 4 | 0 |
| Grand Kru | 0 | 0 | 0 | 0 | 0 | 0 | 7 | 0 |
| Lofa | 0 | 0 | 0 | 0 | 0 | 0 | 15 | 0 |
| Margibi | 0 | 0 | 0 | 0 | 0 | 0 | 12 | 1 |
| Maryland | 0 | 0 | 0 | 0 | 0 | 0 | 14 | 0 |
| Montserrado | 0 | 0 | 0 | 0 | 0 | 0 | 70 | 1 |
| Nimba | 0 | 0 | 0 | 0 | 0 | 0 | 7 | 0 |
| River Gee | 0 | 0 | 0 | 0 | 0 | 0 | 9 | 0 |
| Sinoe | 0 | 0 | 0 | 0 | 0 | 0 | 2 | 0 |
| NATIONAL | 0 | 0 | 0 | 0 | 0 | 0 | 163 | 6 |

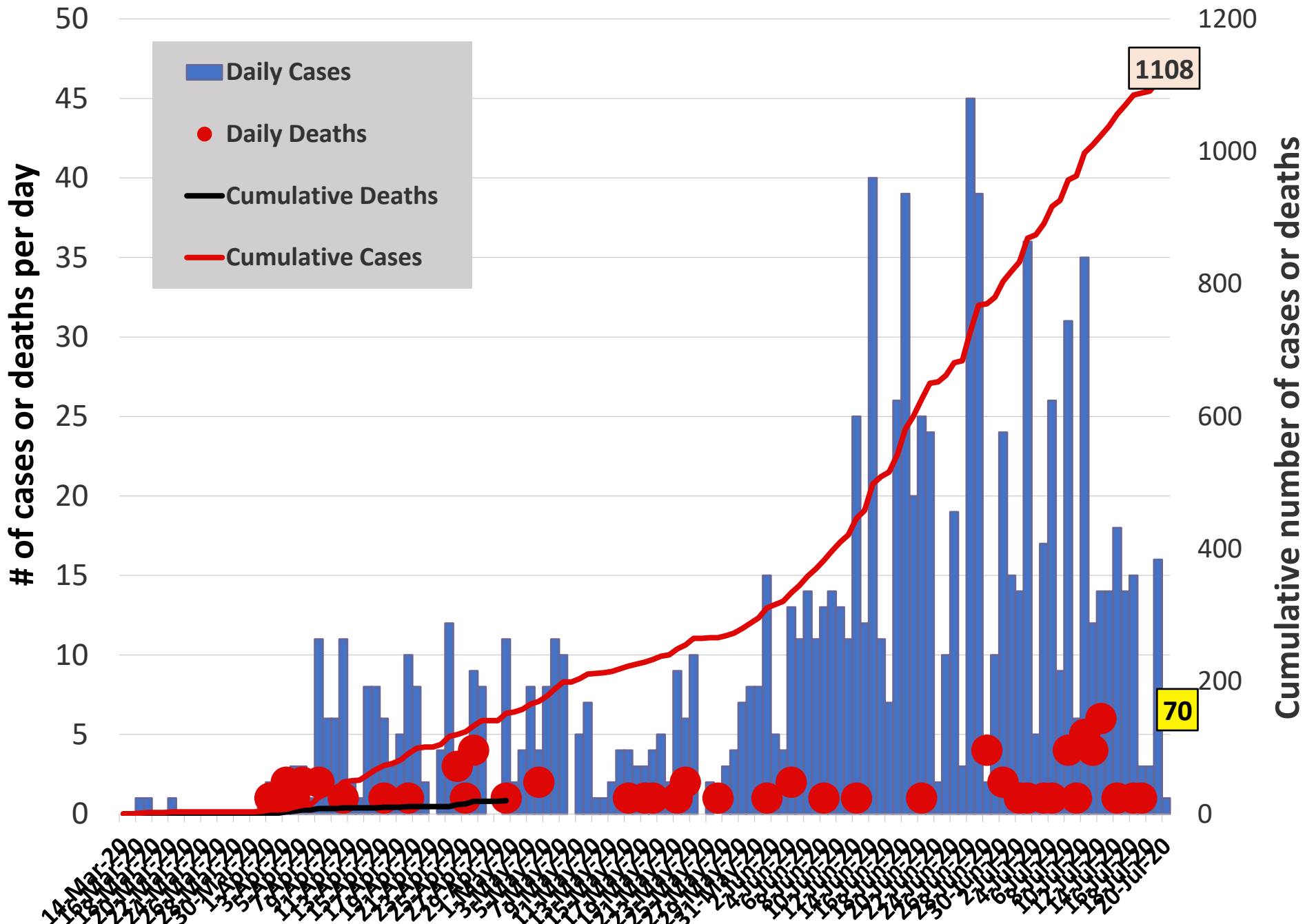
Cadre Cases and Deaths by Health Care Workers (16 March – 20 July 2020)

| Health Care Worker Cadre | Montserrat | | Margibi | | Nimba | | River Gee | | Sinoe | | Grand Kru | | Gbarpolu | | Bong | | Lofa | | Grand Bassa | | Maryland | | Bomi | | National (Total) | |
|----------------------------------|------------|----------|-----------|----------|----------|----------|-----------|----------|----------|----------|-----------|----------|----------|----------|-----------|----------|-----------|----------|-------------|----------|-----------|----------|----------|----------|------------------|----------|
| | Cases | Deaths | Cases | Deaths | Cases | Deaths | Cases | Deaths | Cases | Deaths | Cases | Deaths | Cases | Deaths | Cases | Deaths | Cases | Deaths | Cases | Deaths | Cases | Deaths | Cases | Deaths | Cases | Deaths |
| Doctors | 10 | 0 | 1 | 0 | 0 | 0 | 1 | 0 | 0 | 0 | 0 | 0 | 0 | 0 | 1 | 0 | 0 | 0 | 0 | 0 | 0 | 0 | 0 | 0 | 13 | 0 |
| Pharmacists | 2 | 0 | 0 | 0 | 0 | 0 | 0 | 0 | 0 | 0 | 0 | 0 | 0 | 0 | 0 | 0 | 0 | 0 | 0 | 0 | 0 | 0 | 0 | 0 | 2 | 0 |
| Nurses | 23 | 1 | 2 | 0 | 1 | 0 | 5 | 0 | 0 | 0 | 1 | 0 | 1 | 1 | 12 | 1 | 8 | 0 | 3 | 0 | 1 | 0 | 1 | 0 | 58 | 3 |
| Nurse Aid | 0 | 0 | 0 | 0 | 2 | 0 | 0 | 0 | 0 | 0 | 4 | 0 | 0 | 0 | 0 | 0 | 0 | 0 | 0 | 0 | 2 | 0 | 0 | 0 | 8 | 0 |
| Midwife | 0 | 0 | 0 | 0 | 0 | 0 | 1 | 0 | 0 | 0 | 0 | 0 | 0 | 0 | 1 | 0 | 1 | 0 | 0 | 0 | 0 | 0 | 0 | 0 | 3 | 0 |
| Radiologist | 1 | 0 | 0 | 0 | 0 | 0 | 0 | 0 | 0 | 0 | 0 | 0 | 0 | 0 | 0 | 0 | 0 | 0 | 0 | 0 | 0 | 0 | 0 | 0 | 1 | 0 |
| Physician Assistants | 6 | 0 | 1 | 0 | 1 | 0 | 1 | 0 | 0 | 0 | 0 | 0 | 0 | 0 | 0 | 0 | 1 | 0 | 0 | 0 | 0 | 0 | 0 | 0 | 10 | 0 |
| Lab Technician | 6 | 0 | 1 | 0 | 2 | 0 | 0 | 0 | 1 | 0 | 1 | 0 | 0 | 0 | 0 | 0 | 2 | 0 | 0 | 0 | 10 | 0 | 0 | 0 | 23 | 0 |
| Environmental Health Technicians | 5 | 0 | 0 | 0 | 0 | 0 | 0 | 0 | 0 | 0 | 0 | 0 | 0 | 0 | 0 | 0 | 0 | 0 | 0 | 0 | 0 | 0 | 0 | 0 | 5 | 0 |
| Microbiologist | 1 | 0 | 0 | 0 | 0 | 0 | 0 | 0 | 0 | 0 | 0 | 0 | 0 | 0 | 0 | 0 | 0 | 0 | 0 | 0 | 0 | 0 | 0 | 0 | 1 | 0 |
| Epidemiologist | 1 | 0 | 0 | 0 | 0 | 0 | 0 | 0 | 0 | 0 | 0 | 0 | 0 | 0 | 0 | 0 | 0 | 0 | 0 | 0 | 0 | 0 | 0 | 0 | 1 | 0 |
| Dieticians | 0 | 0 | 7 | 1 | 0 | 0 | 0 | 0 | 0 | 0 | 0 | 0 | 0 | 0 | 0 | 0 | 0 | 0 | 0 | 0 | 0 | 0 | 0 | 0 | 7 | 1 |
| Dispenser | 0 | 0 | 0 | 0 | 0 | 0 | 0 | 0 | 0 | 0 | 0 | 0 | 0 | 0 | 2 | 1 | 0 | 0 | 0 | 0 | 0 | 0 | 0 | 0 | 2 | 1 |
| Licensed Practical Nurse | 0 | 0 | 0 | 0 | 0 | 0 | 0 | 0 | 0 | 0 | 0 | 0 | 0 | 0 | 1 | 1 | 0 | 0 | 0 | 0 | 0 | 0 | 0 | 0 | 1 | 1 |
| Psychosocial Worker | 1 | 0 | 0 | 0 | 0 | 0 | 0 | 0 | 0 | 0 | 0 | 0 | 0 | 0 | 0 | 0 | 0 | 0 | 0 | 0 | 0 | 0 | 0 | 0 | 1 | 0 |
| Hygienist | 0 | 0 | 0 | 0 | 0 | 0 | 0 | 0 | 0 | 0 | 0 | 0 | 0 | 0 | 1 | 0 | 0 | 0 | 0 | 0 | 0 | 0 | 0 | 0 | 1 | 0 |
| Logistician | 0 | 0 | 0 | 0 | 0 | 0 | 0 | 0 | 0 | 0 | 0 | 0 | 0 | 0 | 0 | 0 | 0 | 0 | 1 | 0 | 0 | 0 | 0 | 0 | 1 | 0 |
| Vaccinator | 0 | 0 | 0 | 0 | 1 | 0 | 0 | 0 | 0 | 0 | 0 | 0 | 0 | 0 | 0 | 0 | 0 | 0 | 0 | 0 | 0 | 0 | 1 | 0 | 2 | 0 |
| Ambulance Driver | 2 | 0 | 0 | 0 | 0 | 0 | 0 | 0 | 0 | 0 | 0 | 0 | 0 | 0 | 0 | 0 | 2 | 0 | 0 | 0 | 0 | 0 | 0 | 0 | 4 | 0 |
| Procurement Officer | 0 | 0 | 0 | 0 | 0 | 0 | 0 | 0 | 1 | 0 | 0 | 0 | 0 | 0 | 0 | 0 | 0 | 0 | 0 | 0 | 0 | 0 | 0 | 0 | 1 | 0 |
| Registrar/ Accountant | 2 | 0 | 0 | 0 | 0 | 0 | 0 | 0 | 0 | 0 | 0 | 0 | 0 | 0 | 0 | 0 | 0 | 0 | 0 | 0 | 0 | 0 | 1 | 0 | 3 | 0 |
| CHT Secretary | 0 | 0 | 0 | 0 | 0 | 0 | 1 | 0 | 0 | 0 | 0 | 0 | 0 | 0 | 0 | 0 | 0 | 0 | 0 | 0 | 0 | 0 | 0 | 0 | 1 | 0 |
| Hospital Administrator | 0 | 0 | 0 | 0 | 0 | 0 | 1 | 0 | 0 | 0 | 0 | 0 | 0 | 0 | 0 | 0 | 0 | 0 | 0 | 0 | 0 | 0 | 0 | 0 | 1 | 0 |
| Hospital Cleaner | 1 | 0 | 0 | 0 | 0 | 0 | 0 | 0 | 0 | 0 | 0 | 0 | 0 | 0 | 1 | 0 | 0 | 0 | 0 | 0 | 1 | 0 | 0 | 0 | 3 | 0 |
| CHT CHV | 0 | 0 | 0 | 0 | 0 | 0 | 0 | 0 | 0 | 0 | 1 | 0 | 0 | 0 | 0 | 0 | 1 | 0 | 0 | 0 | 0 | 0 | 0 | 0 | 2 | 0 |
| GIS Specialist | 1 | 0 | 0 | 0 | 0 | 0 | 0 | 0 | 0 | 0 | 0 | 0 | 0 | 0 | 0 | 0 | 0 | 0 | 0 | 0 | 0 | 0 | 0 | 0 | 1 | 0 |
| Others | 7 | 0 | 0 | 0 | 0 | 0 | 0 | 0 | 0 | 0 | 0 | 0 | 0 | 0 | 0 | 0 | 0 | 0 | 0 | 0 | 0 | 0 | 0 | 0 | 7 | 0 |
| Total: | 69 | 1 | 12 | 1 | 7 | 0 | 10 | 0 | 2 | 0 | 7 | 0 | 1 | 1 | 19 | 3 | 15 | 0 | 4 | 0 | 14 | 0 | 3 | 0 | 163 | 6 |

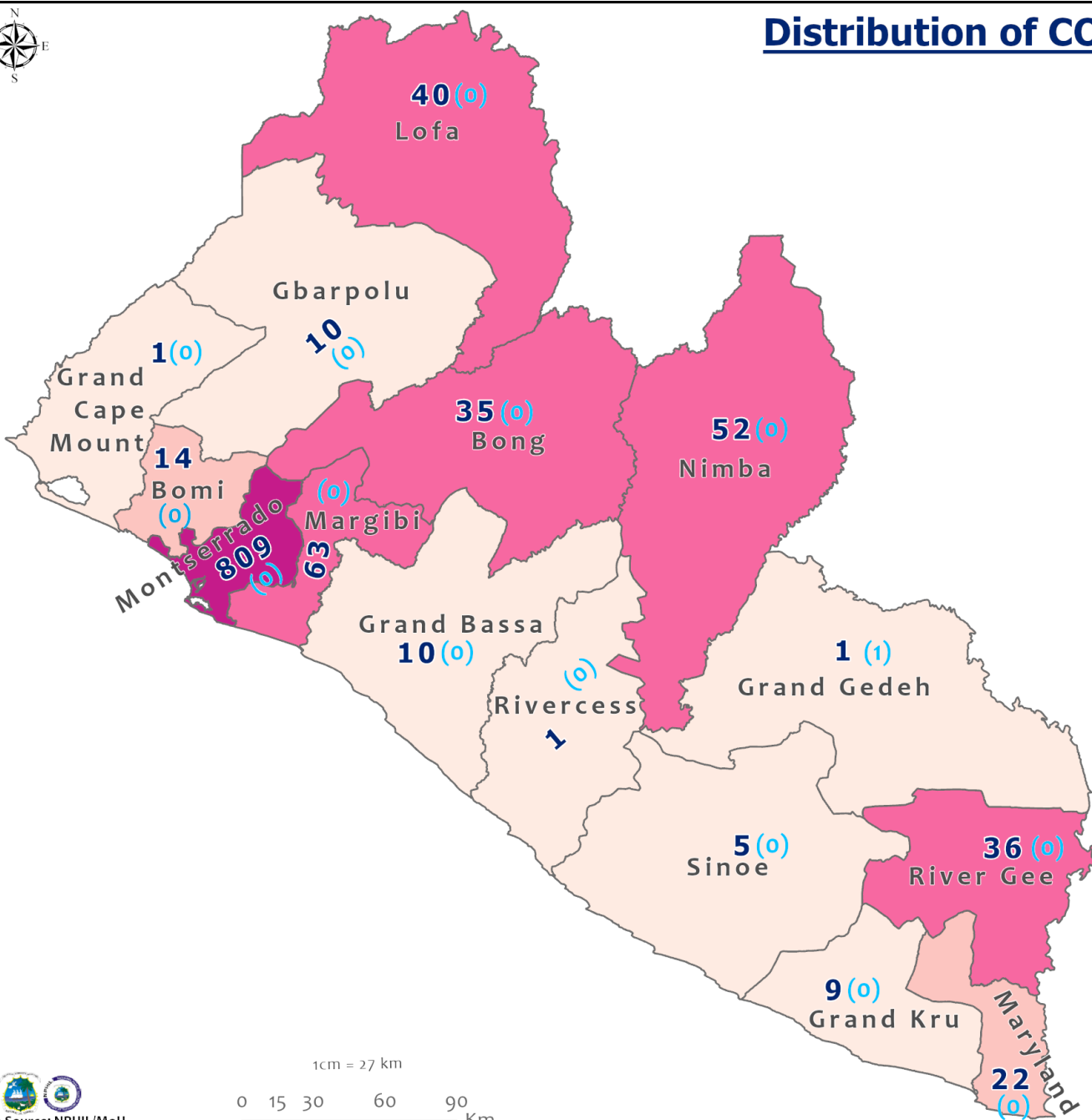
Suspected and High Risk Cases and Deaths (16 March – 20 July 2020)

| County | New Suspected | Cumulative Suspected | New High Risk | Cumulative High Risk | New Suspected Deaths | Cumulative Suspected Deaths |
|-------------------------|---------------|----------------------|---------------|----------------------|----------------------|-----------------------------|
| Montserrado | 32 | 6169 | 0 | 0 | 0 | 79 |
| Margibi | 1 | 9 | 0 | 44 | 0 | 1 |
| Maryland | 0 | 27 | 0 | 20 | 0 | 5 |
| Bong | 0 | 22 | 0 | 159 | 0 | 3 |
| Rivercess | 0 | 3 | 0 | 7 | 0 | 1 |
| River Gee | 0 | 39 | 0 | 46 | 0 | 0 |
| Lofa | 0 | 75 | 0 | 74 | 0 | 54 |
| Grand Cape Mount | 0 | 21 | 0 | 0 | 0 | 0 |
| Bomi | 0 | 9 | 0 | 81 | 0 | 0 |
| Sinoe | 0 | 46 | 0 | 54 | 0 | 7 |
| Grand Kru | 0 | 0 | 0 | 88 | 0 | 0 |
| Gbarpolu | 0 | 91 | 0 | 13 | 0 | 0 |
| Grand Bassa | 0 | 43 | 0 | 32 | 0 | 0 |
| Nimba | 0 | 190 | 0 | 185 | 0 | 13 |
| National | 33 | 6744 | 0 | 803 | 0 | 163 |

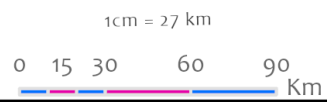
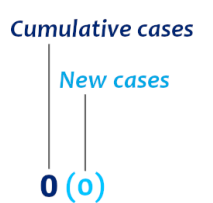
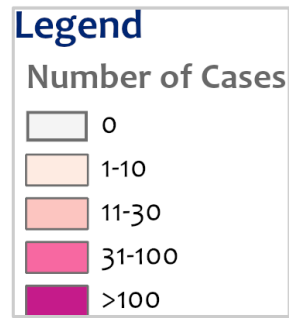
EPI-Curve of Confirmed Cases and Deaths



Distribution of COVID-19 Cases by County in Liberia - July 20, 2020



Total cumulative cases:
1108
 Total new cases:
1



COVID-19 Cases by District in Liberia - July 20, 2020



Total Cases: 1108

| Affected Counties | Cumulative Cases |
|-------------------|------------------|
| Montserrado | 809 |
| Margibi | 63 |
| Nimba | 52 |
| Lofa | 40 |
| River Gee | 36 |
| Bong | 35 |
| Maryland | 22 |
| Bomi | 14 |
| Grand Bassa | 10 |
| Gbarpolu | 10 |
| Grand Kru | 9 |
| Sinoe | 5 |
| Grand Cape Mount | 1 |
| Rivercess | 1 |
| Grand Gedeh | 1 |

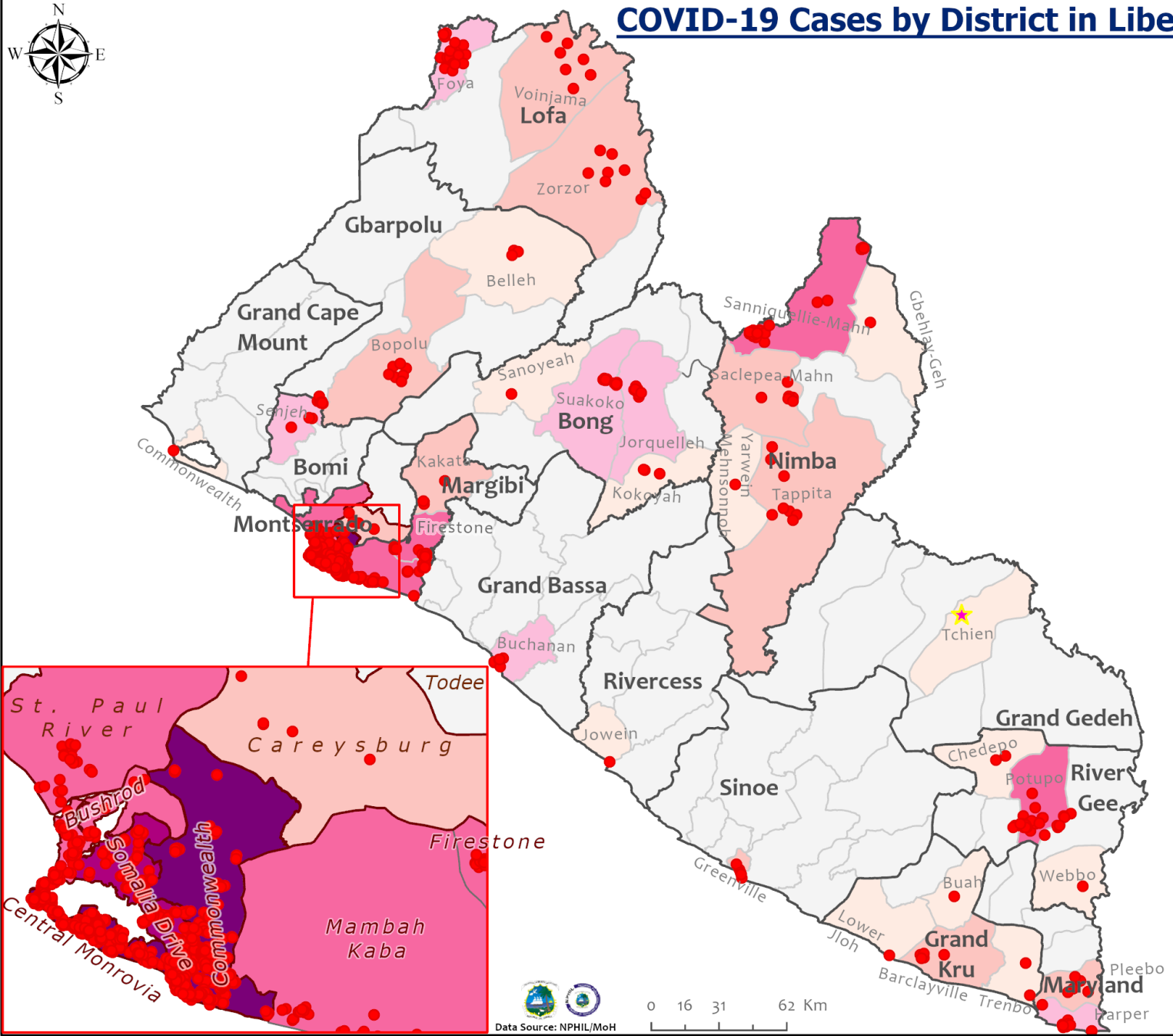
Legend

Case Status

- ★ New confirmed cases
- Confirmed cases

Cases / District

- 0
- 1-3
- 4-10
- 11-20
- 21-68
- 69-86
- 87-357



Precautionary Observation Centers (POC): Admission and Discharges

| County | Precautionary Observation Centers | | | | Cumulative Move to Treatment |
|-----------------|-----------------------------------|------------------|------------------|---|------------------------------|
| | New admissions | Currently in POC | Daily Discharges | Cumulative Discharges (not including transferred) | |
| Bomi | 0 | 0 | 0 | 0 | 0 |
| Gbarpolu | 0 | 0 | 0 | 0 | 0 |
| Grand Bassa | 0 | 6 | 0 | 36 | 0 |
| Grand Kru | 0 | 29 | 0 | 0 | 0 |
| Margibi | 0 | 29 | 0 | 87 | 0 |
| Maryland | 0 | 4 | 0 | 2 | 0 |
| Montserrado | 0 | 15 | 0 | 79 | 0 |
| Nimba | 0 | 3 | 0 | 32 | 0 |
| River Gee | 0 | 10 | 0 | 8 | 0 |
| Sinoe | 0 | 2 | 0 | 179 | 0 |
| Lofa | 0 | 25 | 0 | 332 | 0 |
| NATIONAL | 0 | 123 | 0 | 755 | 0 |

Grand Kru has 14 new high risk contacts but due to limited space at the POC, they are self quarantine

14 Military Hospital & Union Treatment Center Daily Report – July 20, 2020

| Treatment Facility Name | New admissions | Daily Discharges | Cumulative Recoveries | Daily Deaths | Cumulative Deaths | *Currently in treatment | Available Bed Occupancy % |
|-------------------------------------|----------------|------------------|-----------------------|--------------|-------------------|-------------------------|---------------------------|
| 14 Military Hospital Treatment Unit | 2 | 6 | 432 | 0 | 6 | 19 | 91 |
| Union Treatment Center | 0 | 0 | 37 | 0 | 0 | 25 | 28 |
| TOTAL | 2 | 6 | 469 | 0 | 6 | 44 | 119 |

| Demographic Breakdown of Cases | | | | | | | | | | | | |
|-------------------------------------|--------------|-------------|----------------|--------------|------------|---------------|----------|----------|----------|----------|----------|----------|
| Treatment Facility Name | Total Census | Total Adult | Total Children | Total Female | Total Male | Total Confirm | Others | Pregnant | Children | | | |
| | | | | | | | | | <1 | 1-5 | 6-10 | 11-17 |
| 14 Military Hospital Treatment Unit | 19 | 19 | 0 | 5 | 14 | 19 | 0 | 0 | 0 | 0 | 0 | 0 |
| Union Treatment Center | 25 | 22 | 3 | 10 | 15 | 25 | 0 | 0 | 1 | 0 | 1 | 1 |
| TOTAL | 44 | 41 | 3 | 15 | 29 | 44 | 0 | 0 | 1 | 0 | 1 | 1 |

Recoveries from Treatment Units (16 March – 20 July 2020)

| COVID-19 Treatment Units | | | | |
|--|-----------------------|------------------------------|-------------------|------------------------------|
| Treatment Unit | New admissions | Cumulative admissions | Recoveries | Cumulative Recoveries |
| 14 Military Hospital & Union Treatment Center, Montserrado | 2 | 512 | 6 | 471 |
| Chief Jallahlone Hospital, Gbarpolu | 0 | 3 | 0 | 1 |
| Jackson F. Doe Hospital, Nimba | 0 | 5 | 0 | 1 |
| E&J Medical Center, Nimba | 0 | 15 | 7 | 8 |
| Ganta Methodist Hospital, Nimba | 0 | 1 | 0 | 1 |
| AML Yekepa, Nimba | 0 | 11 | 0 | 7 |
| Pleebo Health Center, Maryland | 0 | 11 | 4 | 7 |
| JJ Dossen Hospital, Maryland | 0 | 9 | 0 | 0 |
| Rally Time Hospital, Grand Kru | 0 | 3 | 0 | 1 |
| Sasstown Health Center, Grand Kru | 0 | 5 | 0 | 0 |
| Fish Town Hospital, River Gee | 0 | 32 | 0 | 1 |
| St. Timothy Hospital, Grand Cape Mount | 0 | 1 | 0 | 0 |
| Liberia Government Hospital, Bomi | 2 | 12 | 0 | 2 |
| Tellewoyan Hospital, Lofa | 0 | 13 | 6 | 10 |
| Foya Hospital, Lofa | 0 | 11 | 5 | 5 |
| Curran Hospital, Lofa | 0 | 4 | 0 | 0 |
| Phebe Hospital, Bong | 0 | 25 | 0 | 19 |
| Liberia Government Hospital, Grand Bassa | 0 | 4 | 0 | 3 |
| Arcelor Mittal, Grand Bassa | 0 | 5 | 0 | 5 |
| Duside Hospital, Margibi | 0 | 36 | 0 | 24 |
| F. J. Grant Hospital, Sinoe | 0 | 4 | 0 | 4 |
| Total | 4 | 722 | 28 | 570 |

Admissions, Currently in Treatment, and Discharges

| COVID-19 Treatment Units | | | | | | | | | |
|--|----------------|-----------------------|------------|-----------------------|-----------------------------|-------------|---------------|-----------|-----------|
| Treatment Unit | New admissions | Cumulative admissions | Discharges | Cumulative Discharges | Currently in Treatment Unit | Total Males | Total Females | 0-35 yrs | 36+ yrs |
| Liberia Government Hospital, Bomi | 2 | 12 | 0 | 2 | 10 | 6 | 4 | 4 | 6 |
| Phebe Hospital, Bong | 0 | 25 | 0 | 19 | 5 | 2 | 3 | 3 | 2 |
| Chief Jallahlone Hospital, Gbarpolu | 0 | 3 | 0 | 1 | 0 | 0 | 0 | 0 | 0 |
| Arcelor Mittal, Grand Bassa | 0 | 5 | 0 | 5 | 0 | 0 | 0 | 0 | 0 |
| Liberia Government Hospital, Grand Bassa | 0 | 3 | 0 | 3 | 0 | 0 | 0 | 0 | 0 |
| St. Timothy Hospital, Grand Cape Mount | 0 | 1 | 0 | 0 | 1 | 1 | 0 | 0 | 1 |
| Rally Time Hospital, Grand Kru | 0 | 3 | 0 | 1 | 2 | 1 | 1 | 2 | 0 |
| Sasstown HC, Grand Kru | 0 | 5 | 0 | 0 | 5 | 2 | 3 | 2 | 3 |
| Tellewoyan Hospital, Lofa | 0 | 13 | 6 | 20 | 3 | 2 | 1 | 0 | 3 |
| Foya Burma Hospital, Lofa | 0 | 11 | 5 | 0 | 6 | 3 | 3 | 1 | 5 |
| Curran Hospital, Lofa | 0 | 4 | 0 | 0 | 4 | 3 | 1 | 1 | 3 |
| Duside Hospital, Margibi | 0 | 36 | 0 | 24 | 6 | 4 | 2 | 1 | 5 |
| Pleebo Health Center, Maryland | 0 | 11 | 4 | 7 | 4 | 2 | 2 | 2 | 2 |
| JJ Dossen Hospital, Maryland | 0 | 9 | 0 | 0 | 9 | 9 | 0 | 6 | 3 |
| Jackson F. Doe Hospital, Nimba | 0 | 5 | 0 | 1 | 3 | 3 | 0 | 3 | 0 |
| E&J Medical Center, Nimba | 0 | 15 | 7 | 8 | 7 | 6 | 1 | 0 | 7 |
| AML Yekepa, Nimba | 0 | 11 | 0 | 7 | 4 | 2 | 2 | 4 | 0 |
| Ganta Methodist Hospital, Nimba | 0 | 1 | 0 | 1 | 0 | 0 | 0 | 0 | 0 |
| Fish Town Hospital, River Gee | 0 | 35 | 0 | 1 | 34 | 28 | 6 | 10 | 24 |
| F. J. Grant Hospital, Sinoe | 0 | 4 | 0 | 4 | 0 | 0 | 0 | 0 | 0 |
| Total | 2 | 212 | 22 | 104 | 103 | 74 | 29 | 39 | 64 |

Laboratory Samples Evaluated – July 20, 2020

| Laboratory | Total | New Positive | Repeat Positive | Initial Negative | Repeat Test Negative | Pending Lab Result |
|-------------------|--------------|---------------------|------------------------|-------------------------|-----------------------------|---------------------------|
| NPHRL | 59 | 1 | 2 | 49 | 2 | 5 |
| Total | 59 | 1 | 2 | 49 | 2 | 5 |

Summary of COVID-19 Contact Tracing in Response Counties

| County | New Contacts Line listed | Cumulative Contacts | No. of Health Care Workers as Contacts | Cumulative no. of Health Care Workers as contacts | Contacts became a case | Cumulative contacts that became a case | Contacts Completed 14 Days | Cumulative Contacts Completing 14 Days | Contacts Under Follow-up | Contacts lost to Follow-up |
|------------------------|--------------------------|---------------------|--|---|------------------------|--|----------------------------|--|--------------------------|----------------------------|
| Montserrado | 0 | 4053 | 0 | 451 | 0 | 160 | 16 | 3683 | 296 | 3 |
| Margibi | 0 | 460 | 0 | 124 | 0 | 40 | 0 | 315 | 105 | 0 |
| Grand Bassa | 0 | 138 | 0 | 65 | 0 | 9 | 0 | 129 | 0 | 0 |
| Sinoe | 0 | 181 | 0 | 29 | 0 | 1 | 0 | 179 | 2 | 0 |
| Gbarpolu | 0 | 87 | 0 | 13 | 0 | 8 | 0 | 53 | 34 | 0 |
| Lofa | 13 | 738 | 0 | 92 | 0 | 31 | 74 | 496 | 226 | 0 |
| Nimba | 0 | 569 | 0 | 53 | 0 | 24 | 0 | 501 | 40 | 8 |
| Bong | 0 | 272 | 0 | 70 | 0 | 28 | 43 | 147 | 123 | 2 |
| Grand CapeMount | 0 | 21 | 0 | 0 | 0 | 0 | 0 | 0 | 0 | 0 |
| RiverGee | 0 | 123 | 0 | 13 | 0 | 30 | 0 | 75 | 48 | 0 |
| Maryland | 0 | 83 | 0 | 30 | 0 | 7 | 0 | 0 | 83 | 0 |
| Bomi | 0 | 95 | 0 | 10 | 0 | 8 | 0 | 0 | 95 | 0 |
| Rivecess | 0 | 22 | 0 | 15 | 0 | 0 | 0 | 0 | 22 | 0 |
| Grand Kru | 14 | 171 | 0 | 93 | 0 | 9 | 0 | 0 | 163 | 0 |
| National | 27 | 7013 | 0 | 1058 | 0 | 355 | 133 | 5578 | 1237 | 13 |

Active Case Finding (16 March – 20 July 2020)

| County | Visitation | | | | Identification, Investigation & Testing | | | | | | | | Supervision | | |
|-----------------|-----------------------------|----------------------------|----------------------------|---------------------------|---|------------------------------------|---|---|---------------------------|--------------------------------------|--|---|---------------------------------------|---------------------------|--------------------------|
| | No. of communities Assigned | No. of communities Visited | No. of Households Assigned | No. of Households Visited | Sick persons Identified | Cumulative Sick persons identified | Sick persons referred for Investigation | Cumulative Sick person referred for Investigation | Sick persons Investigated | Cumulative Sick persons Investigated | Sick persons investigated and referred for testing | Cumulative Sick persons investigated and referred for testing | No. of Sick persons followed-up today | No. of supervision visits | No. of Supervisory Calls |
| Bomi | 127 | 10 | 540 | 540 | 0 | 0 | 0 | 0 | 0 | 0 | 0 | 0 | 0 | 2 | 0 |
| Bong | 333 | 189 | 48611 | 5068 | 227 | 247 | 227 | 247 | 227 | 247 | 2 | 2 | 7 | 0 | 0 |
| Montserrado | 250 | 0 | 0 | 81417 | 1 | 559 | 1 | 357 | 1 | 338 | 1 | 289 | 0 | 0 | 0 |
| Margibi | 15 | 15 | 15 | 134 | 0 | 4 | 0 | 4 | 0 | 16 | 0 | 10 | 7 | 8 | 7 |
| Maryland | 0 | 0 | 278 | 278 | 2 | 3 | 2 | 3 | 2 | 3 | 2 | 3 | 2 | 0 | 0 |
| Grand Cape Mont | 1 | 1 | 19 | 19 | 0 | 0 | 0 | 0 | 0 | 0 | 0 | 0 | 0 | 0 | 0 |
| Grand Kru | 100 | 50 | 2000 | 1000 | 0 | 16 | 0 | 16 | 0 | 16 | 0 | 16 | 0 | 4 | 6 |
| Sinoe | 90 | 90 | 5232 | 2534 | 0 | 619 | 169 | 169 | 0 | 169 | 0 | 1 | 0 | 5 | 5 |
| Rivercess | 33 | 33 | 495 | 495 | 0 | 0 | 0 | 0 | 0 | 0 | 0 | 0 | 0 | 0 | 0 |
| River Gee | 100 | 80 | 50 | 20 | 0 | 24 | 0 | 24 | 0 | 24 | 0 | 24 | 37 | 6 | 0 |
| Gbarpolu | 54 | 54 | 1,270 | 409 | 0 | 221 | 0 | 221 | 0 | 221 | 0 | 25 | 39 | 0 | 0 |
| Grand Bassa | 20 | 20 | 239 | 239 | 20 | 248 | 10 | 248 | 20 | 248 | 0 | 0 | 0 | 0 | 0 |
| Nimba | 430 | 381 | 2460 | 1489 | 0 | 52 | 0 | 52 | 0 | 52 | 0 | 34 | 1 | 0 | 0 |
| Lofa | 295 | 295 | 513 | 513 | 0 | 75 | 0 | 75 | 0 | 75 | 0 | 75 | 0 | 26 | 207 |
| National | 1815 | 1165 | 60988 | 93660 | 230 | 1820 | 409 | 1168 | 230 | 1409 | 3 | 477 | 93 | 51 | 225 |

Thank you for Listening