



Liberia COVID-19 Daily Sitrep 128 (21th July 2020)

Summary of COVID-19 Cases by Reporting County, Liberia, 16 March – 21 July 2020

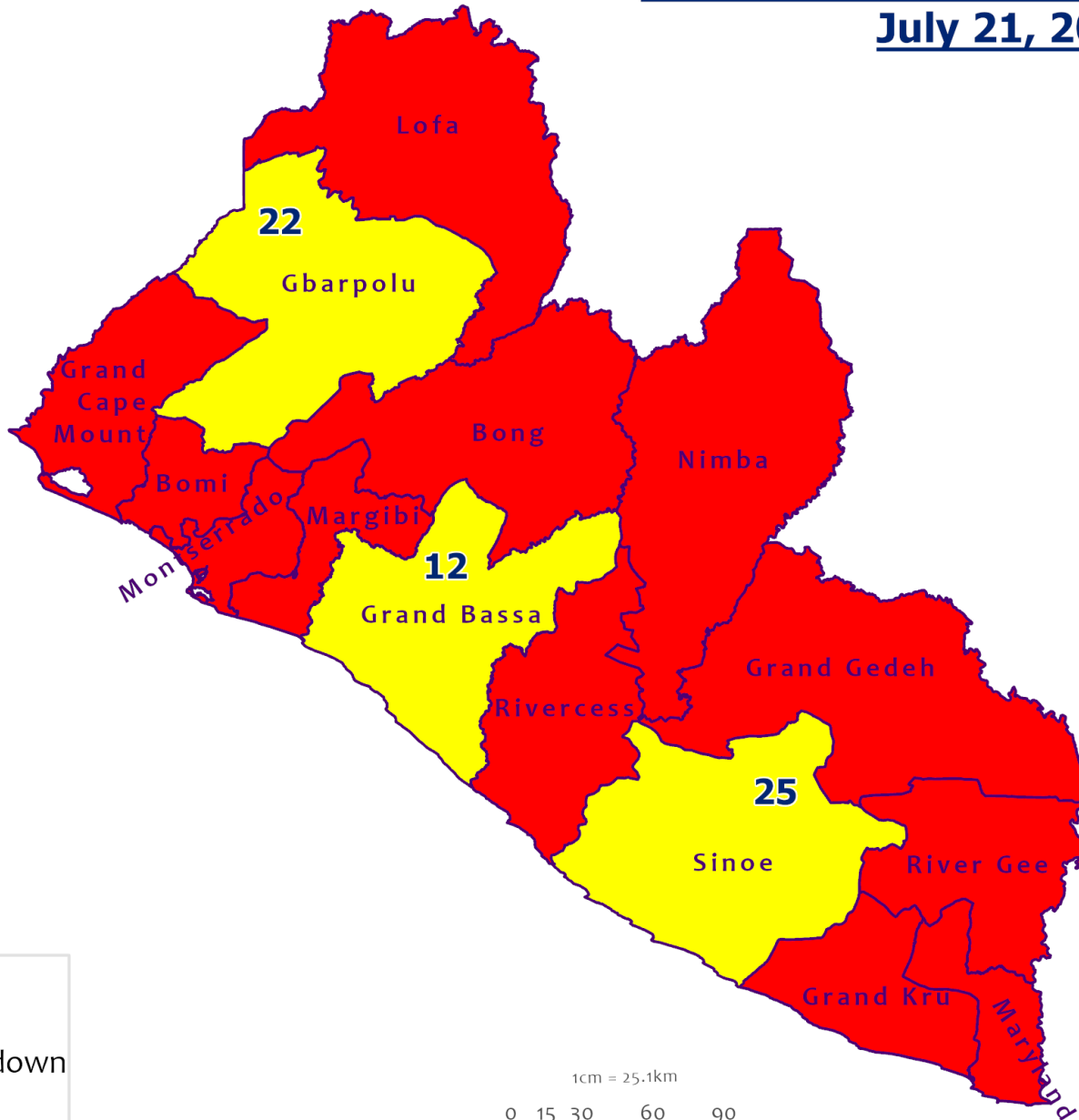
County			Confirmed Cumulative Cases
	Confirmed Cases	Cases on Contact List	
Bomi	0	0	14
Bong	0	0	35
Gbarpolu	0	0	10
Grand Bassa	0	0	10
Grand Cape Mount	0	0	1
Grand Kru	4	4	13
Grand Gedeh	0	0	1
Lofa	1	1	41
Margibi	0	0	63
Maryland	1	1	23
Montserrado	0	0	809
Nimba	0	0	52
Rivercess	0	0	1
River Gee	0	0	36
Sinoe	0	0	5
NATIONAL	6	6	1114

Demographic Breakdown (Gender & Age) of Confirmed COVID-19 Cases (16 March – 21 July 2020)

County	<15 years		15 - 34		35 - 54		55+		All ages		Total Confirmed
	M	F	M	F	M	F	M	F	M	F	
Bomi	2	2	1	2	4	2	0	1	7	7	14
Bong	3	1	1	5	8	7	7	3	19	16	35
Gbarpolu	1	2	0	2	3	1	1	0	5	5	10
Grand Bassa	1	0	2	6	0	1	0	0	3	7	10
Grand Cape Mount	0	0	0	0	0	0	1	0	1	0	1
Grand Kru	0	0	2	4	2	4	1	0	5	8	13
Grand Gedeh	0	0	0	0	1	0	0	0	1	0	1
Lofa	2	3	8	3	12	5	7	1	29	12	41
Margibi	4	3	13	9	15	6	7	6	39	24	63
Maryland	1	0	8	4	5	2	1	2	15	8	23
Montserrado	36	35	209	106	212	89	83	39	540	269	809
Nimba	0	2	13	5	24	2	3	3	40	12	52
Rivercess	0	0	0	1	0	0	0	0	0	1	1
River Gee	0	0	4	3	19	5	5	0	28	8	36
Sinoe	0	0	1	0	3	1	0	0	4	1	5
National	50	48	262	150	308	125	116	55	736	378	1114

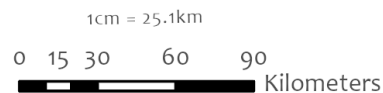


Counties COVID-19 Status in Liberia July 21, 2020



County Status

- Preparedness
- 28-Day Countdown
- Response



Data Source: NPHI/MoH

Demographic Breakdown (Gender & Age) of Confirmed COVID-19 Deaths (16 March – 21 July 2020)

County	<15 years		15 - 34		35 - 54		55+		All ages		Total Confirmed
	M	F	M	F	M	F	M	F	M	F	
Bong	0	0	1	0	0	0	3	1	4	1	5
Gbarpolu	0	0	0	0	1	0	1	0	2	0	2
Grand Bassa	0	0	0	0	0	0	0	0	0	0	0
Grand Kru	0	0	0	0	0	0	0	0	0	0	0
Lofa	0	0	1	0	0	1	6	1	7	2	9
Margibi	0	0	0	1	1	1	0	2	1	4	5
Maryland	0	0	0	0	0	0	1	1	1	1	2
Montserrado	0	0	1	0	7	7	14	7	22	14	36
Nimba	0	0	2	0	3	1	3	0	8	1	9
Rivercess	0	0	0	1	0	0	0	0	0	1	1
River Gee	0	0	0	0	0	0	0	0	0	0	0
Sinoe	0	0	1	0	0	0	0	0	1	0	1
National	0	0	6	2	12	10	28	12	46	24	70

Summary of COVID-19 Deaths by Reporting County, Liberia, 16 March – 21 July 2020

County	DAILY REPORT								Cumulative Deaths
	New Suspected Deaths	Laboratory Confirmed Deaths						Confirmed Deaths on Contact List	
		COVID-19 Treatment Unit	Total in COVID-19 Treatment Unit	Health Facility	Total in Health Facility	Community	Total in Community		
Bong	0	0	0	0	4	0	1	0	5
Gbarpolu	0	0	0	0	1	0	0	0	1
Grand Bassa	0	0	0	0	0	0	0	0	0
Grand Kru	0	0	0	0	0	0	0	0	0
Lofa	0	0	0	0	5	0	4	0	9
Maryland	0	0	0	0	2	0	0	0	2
Margibi	0	0	0	0	5	0	0	0	5
Montserrado	0	0	6	0	16	0	15	0	37
Nimba	0	0	1	0	4	0	4	0	9
Rivercess	0	0	0	0	1	0	0	0	1
River Gee	0	0	0	0	0	0	0	0	0
Sinoe	0	0	0	0	1	0	0	0	1
National	0	0	7	0	39	0	24	0	70

The Liberia Case Fatality rate (CFR) officially considered is for deaths that occurred among patients in care at the COVID-19 treatment units across the country. As of 13 July 2020, a total of 7 deaths have been recorded CFR=0.6%. The country is however keeping active surveillance on community deaths and deaths in non COVID-19 treatment health units.

Daily and Cumulative Healthcare Worker (HCW) COVID-19 Cases and Deaths by County, Liberia, 16 March – 21 July 2020

County	DAILY REPORT						CUMULATIVE CASES (ALIVE & DEAD)	
	New Suspected & High Risk Cases (Alive)			New Suspect Death	Laboratory Confirmed Cases	Confirmed Cases on Contact List	Confirmed	Deaths
	Suspect	High Risk	Total					
Bomi	0	0	0	0	0	0	3	0
Bong	0	0	0	0	0	0	19	3
Gbarpolu	0	0	0	0	0	0	1	1
Grand Bassa	0	0	0	0	0	0	4	0
Grand Kru	0	0	0	0	4	4	11	0
Lofa	0	0	0	0	0	0	15	0
Margibi	0	0	0	0	0	0	12	1
Maryland	0	0	0	0	0	0	14	0
Montserrado	0	0	0	0	0	0	70	1
Nimba	0	0	0	0	0	0	7	0
River Gee	0	0	0	0	0	0	9	0
Sinoe	0	0	0	0	0	0	2	0
NATIONAL	0	0	0	0	4	4	167	6

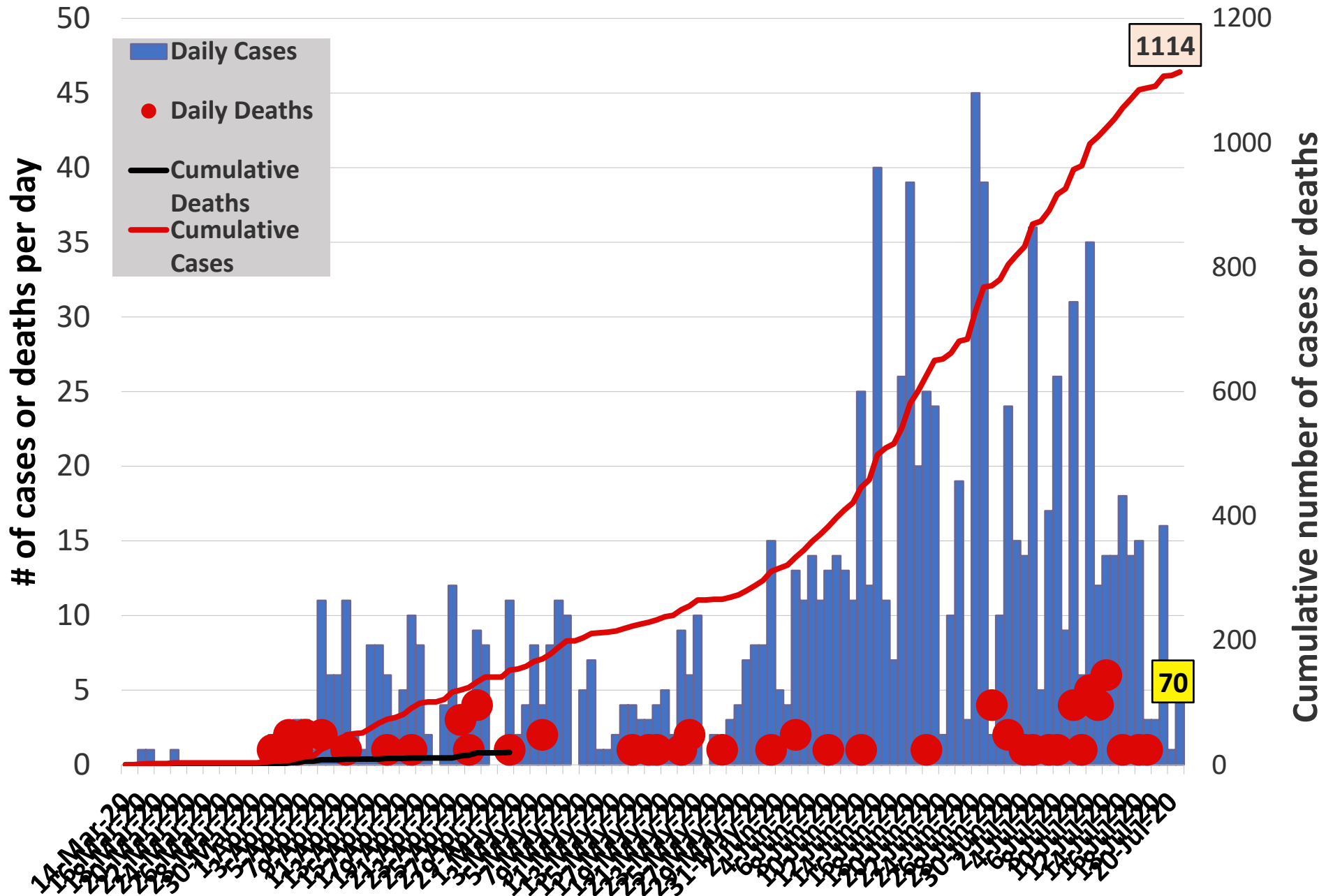
Cadre Cases and Deaths by Health Care Workers (16 March – 21 July 2020)

Health Care Worker Cadre	Montserratado		Margibi		Nimba		River Gee		Sinoe		Grand Kru		Gbarpolu		Bong		Lofa		Grand Bassa		Maryland		Bomi		National (Total)	
	Cases	Deaths	Cases	Deaths	Cases	Deaths	Cases	Deaths	Cases	Deaths	Cases	Deaths	Cases	Deaths	Cases	Deaths	Cases	Deaths	Cases	Deaths	Cases	Deaths	Cases	Deaths	Cases	Deaths
Doctors	10	0	1	0	0	0	1	0	0	0	0	0	0	0	1	0	0	0	0	0	0	0	0	0	13	0
Pharmacists	2	0	0	0	0	0	0	0	0	0	0	0	0	0	0	0	0	0	0	0	0	0	0	0	2	0
Nurses	23	1	2	0	1	0	5	0	0	0	2	0	1	1	12	1	8	0	3	0	1	0	1	0	59	3
Nurse Aid	0	0	0	0	2	0	0	0	0	0	4	0	0	0	0	0	0	0	0	0	2	0	0	0	8	0
Midwife	0	0	0	0	0	0	1	0	0	0	0	0	0	0	1	0	1	0	0	0	0	0	0	0	3	0
Radiologist	1	0	0	0	0	0	0	0	0	0	0	0	0	0	0	0	0	0	0	0	0	0	0	0	1	0
Physician Assistants	6	0	1	0	1	0	1	0	0	0	0	0	0	0	0	0	1	0	0	0	0	0	0	0	10	0
Lab Technician	6	0	1	0	2	0	0	0	1	0	1	0	0	0	0	0	2	0	0	0	10	0	0	0	23	0
Environmental Health Technicians	5	0	0	0	0	0	0	0	0	0	0	0	0	0	0	0	0	0	0	0	0	0	0	0	5	0
Microbiologist	1	0	0	0	0	0	0	0	0	0	0	0	0	0	0	0	0	0	0	0	0	0	0	0	1	0
Epidemiologist	1	0	0	0	0	0	0	0	0	0	0	0	0	0	0	0	0	0	0	0	0	0	0	0	1	0
Dieticians	0	0	7	1	0	0	0	0	0	0	0	0	0	0	0	0	0	0	0	0	0	0	0	0	7	1
Dispenser	0	0	0	0	0	0	0	0	0	0	0	0	0	0	2	1	0	0	0	0	0	0	0	0	2	1
Licensed Practical Nurse	0	0	0	0	0	0	0	0	0	0	0	0	0	0	1	1	0	0	0	0	0	0	0	0	1	1
Psychosocial Worker	1	0	0	0	0	0	0	0	0	0	0	0	0	0	0	0	0	0	0	0	0	0	0	0	1	0
Hygienist	0	0	0	0	0	0	0	0	0	0	0	0	0	0	1	0	0	0	0	0	0	0	0	0	1	0
Logistician	0	0	0	0	0	0	0	0	0	0	0	0	0	0	0	0	0	0	1	0	0	0	0	0	1	0
Vaccinator	0	0	0	0	1	0	0	0	0	0	0	0	0	0	0	0	0	0	0	0	0	0	1	0	2	0
Ambulance Driver	2	0	0	0	0	0	0	0	0	0	0	0	0	0	0	0	2	0	0	0	0	0	0	0	4	0
Procurement Officer	0	0	0	0	0	0	0	0	1	0	0	0	0	0	0	0	0	0	0	0	0	0	0	0	1	0
Registrar/ Accountant	2	0	0	0	0	0	0	0	0	0	0	0	0	0	0	0	0	0	0	0	0	0	1	0	3	0
CHT Secretary	0	0	0	0	0	0	1	0	0	0	0	0	0	0	0	0	0	0	0	0	0	0	0	0	1	0
Hospital Administrator	0	0	0	0	0	0	1	0	0	0	0	0	0	0	0	0	0	0	0	0	0	0	0	0	1	0
Hospital Cleaner	1	0	0	0	0	0	0	0	0	0	1	0	0	0	1	0	0	0	0	0	1	0	0	0	4	0
CHT CHV/ CHSS	0	0	0	0	0	0	0	0	0	0	3	0	0	0	0	0	1	0	0	0	0	0	0	0	4	0
GIS Specialist	1	0	0	0	0	0	0	0	0	0	0	0	0	0	0	0	0	0	0	0	0	0	0	0	1	0
Others	7	0	0	0	0	0	0	0	0	0	0	0	0	0	0	0	0	0	0	0	0	0	0	0	7	0
Total:	69	1	12	1	7	0	10	0	2	0	11	0	1	1	19	3	15	0	4	0	14	0	3	0	167	6

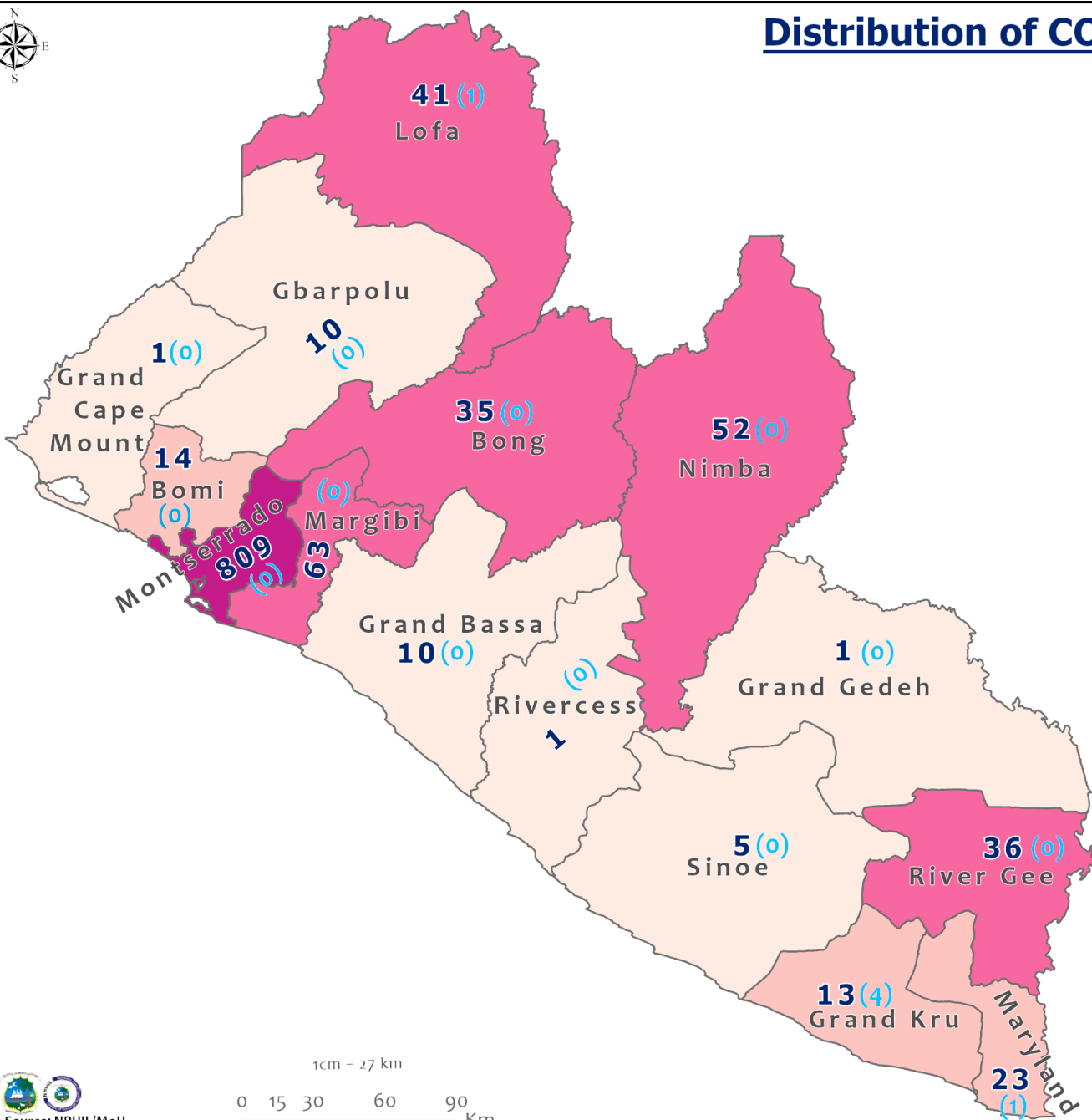
Suspected and High Risk Cases and Deaths (16 March – 21 July 2020)

County	New Suspected	Cumulative Suspected	New High Risk	Cumulative High Risk	New Suspected Deaths	Cumulative Suspected Deaths
Montserratado	26	6195	0	0	0	79
Margibi	1	9	0	44	0	1
Maryland	0	27	0	20	0	5
Bong	0	22	0	159	0	3
Rivercess	0	3	0	7	0	1
River Gee	0	39	0	46	0	0
Lofa	0	75	0	74	0	54
Grand Cape Mount	0	21	0	0	0	0
Bomi	0	9	0	81	0	0
Sinoe	0	46	0	54	0	7
Grand Gedeh	0	0	14	14	0	0
Grand Kru	0	0	0	88	0	0
Gbarpolu	0	91	0	13	0	0
Grand Bassa	0	43	0	32	0	0
Nimba	3	193	0	185	0	13
National	30	6773	14	817	0	163

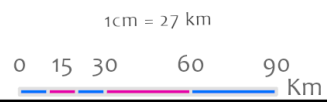
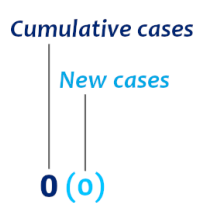
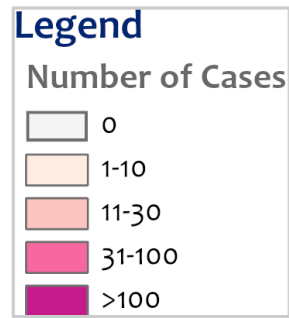
EPI-Curve of Confirmed Cases and Deaths



Distribution of COVID-19 Cases by County in Liberia - July 21, 2020



Total cumulative cases:
1114
 Total new cases:
6



COVID-19 Cases by District in Liberia - July 21, 2020



Total Cases: 1114

Affected Counties	Cumulative Cases
Montserrado	809
Margibi	63
Nimba	52
Lofa	41
River Gee	36
Bong	35
Maryland	23
Bomi	14
Grand Kru	13
Grand Bassa	10
Gbarpolu	10
Sinoe	5
Grand Cape Mount	1
Rivercess	1
Grand Gedeh	1

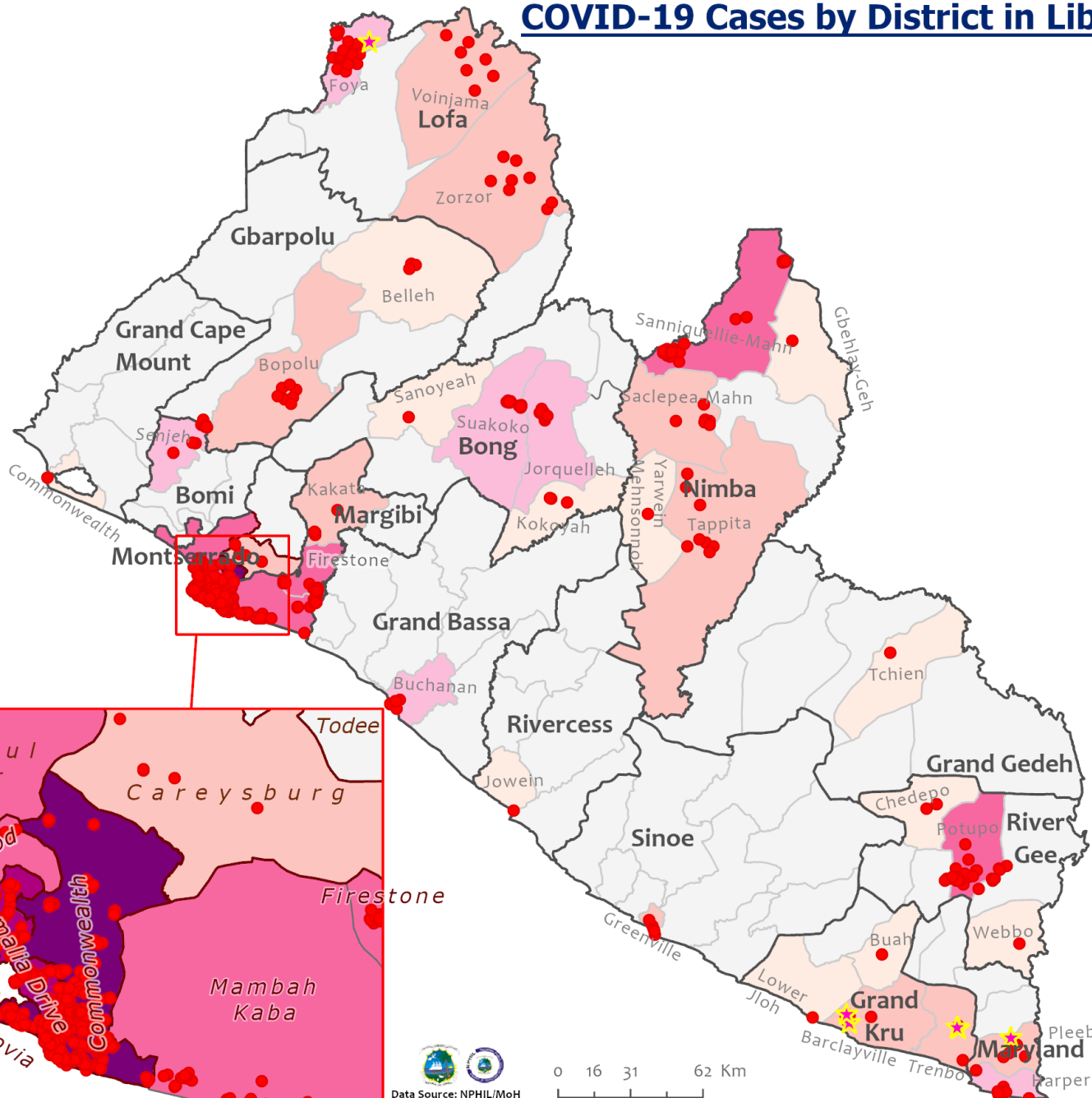
Legend

Case Status

- ★ New confirmed cases
- Confirmed cases

Cases / District

- 0
- 1-3
- 4-10
- 11-20
- 21-68
- 69-86
- 87-357



Precautionary Observation Centers (POC): Admission and Discharges

County	Precautionary Observation Centers				Cumulative Move to Treatment
	New admissions	Currently in POC	Daily Discharges	Cumulative Discharges (not including transferred)	
Bomi	0	0	0	0	0
Gbarpolu	0	0	0	0	0
Grand Bassa	0	0	6	42	0
Grand Kru	0	29	0	0	0
Margibi	0	29	0	87	0
Maryland	0	4	0	2	0
Montserrado	1	13	0	87	5
Nimba	0	3	0	32	0
River Gee	0	10	0	8	0
Sinoe	0	2	0	179	0
Lofa	0	25	0	332	0
NATIONAL	1	115	6	769	5

14 Military Hospital & Union Treatment Center Daily Report – July 21, 2020

Treatment Facility Name	New admissions	Daily Discharges	Cumulative Recoveries	Daily Deaths	Cumulative Deaths	*Currently in treatment	Available Bed Occupancy %
14 Military Hospital Treatment Unit	4	7	439	0	6	16	94
Union Treatment Center	1	0	37	0	0	26	27
TOTAL	5	7	476	0	6	42	121

Demographic Breakdown of Cases												
Treatment Facility Name	Total Census	Total Adult	Total Children	Total Female	Total Male	Total Confirm	Others	Pregnant	Children			
									<1	1-5	6-10	11-17
14 Military Hospital Treatment Unit	16	16	0	4	12	16	0	0	0	0	0	0
Union Treatment Center	26	22	4	10	16	26	0	0	1	0	2	1
TOTAL	42	38	4	14	28	42	0	0	1	0	2	1

Recoveries from Treatment Units (16 March – 21 July 2020)

COVID-19 Treatment Units				
Treatment Unit	New admissions	Cumulative admissions	Recoveries	Cumulative Recoveries
14 Military Hospital & Union Treatment Center, Montserrado	5	517	7	478
Chief Jallahlone Hospital, Gbarpolu	0	3	0	1
Jackson F. Doe Hospital, Nimba	0	5	0	1
E&J Medical Center, Nimba	0	15	0	8
Ganta Methodist Hospital, Nimba	0	1	0	1
AML Yekepa, Nimba	0	11	0	7
Pleebo Health Center, Maryland	1	12	0	7
JJ Dossen Hospital, Maryland	0	9	0	0
Rally Time Hospital, Grand Kru	0	3	0	1
Sasstown Health Center, Grand Kru	0	5	0	0
Fish Town Hospital, River Gee	0	32	6	7
St. Timothy Hospital, Grand Cape Mount	0	1	0	0
Liberia Government Hospital, Bomi	0	12	0	2
Tellewoyan Hospital, Lofa	0	13	1	11
Foya Hospital, Lofa	0	11	0	5
Curran Hospital, Lofa	0	4	0	0
Phebe Hospital, Bong	0	25	3	22
Liberia Government Hospital, Grand Bassa	0	4	0	3
Arcelor Mittal, Grand Bassa	0	5	0	5
Duside Hospital, Margibi	0	36	0	24
F. J. Grant Hospital, Sinoe	0	4	0	4
Total	6	728	17	587

Admissions, Currently in Treatment, and Discharges

COVID-19 Treatment Units									
Treatment Unit	New admissions	Cumulative admissions	Discharges	Cumulative Discharges	Currently in Treatment Unit	Total Males	Total Females	0-35 yrs	36+ yrs
Liberia Government Hospital, Bomi	0	12	0	2	10	6	4	4	6
Phebe Hospital, Bong	0	25	3	21	2	0	2	0	2
Chief Jallahlone Hospital, Gbarpolu	0	3	0	1	0	0	0	0	0
Arcelor Mittal, Grand Bassa	0	5	0	5	0	0	0	0	0
Liberia Government Hospital, Grand Bassa	0	3	0	3	0	0	0	0	0
St. Timothy Hospital, Grand Cape Mount	0	1	0	0	1	1	0	0	1
Rally Time Hospital, Grand Kru	0	3	0	1	2	1	1	2	0
Sasstown HC, Grand Kru	0	6	0	0	6	2	4	2	4
Tellewoyan Hospital, Lofa	0	13	1	11	2	1	1	0	2
Foya Burma Hospital, Lofa	0	11	0	0	6	3	3	1	5
Curran Hospital, Lofa	0	4	0	0	4	3	1	1	3
Duside Hospital, Margibi	0	36	0	24	6	4	2	1	5
Pleebo Health Center, Maryland	1	12	0	7	5	2	3	3	2
JJ Dossen Hospital, Maryland	0	9	0	0	9	9	0	6	3
Jackson F. Doe Hospital, Nimba	0	5	0	1	3	3	0	3	0
E&J Medical Center, Nimba	0	15	0	8	7	6	1	0	7
AML Yekepa, Nimba	0	11	0	7	4	2	2	4	0
Ganta Methodist Hospital, Nimba	0	1	0	1	0	0	0	0	0
Fish Town Hospital, River Gee	0	35	6	7	28	24	4	9	19
F. J. Grant Hospital, Sinoe	0	4	0	4	0	0	0	0	0
Total	1	214	10	103	95	67	28	36	59

Laboratory Samples Evaluated – July 21, 2020

Laboratory	Total	New Positive	Repeat Positive	Initial Negative	Repeat Test Negative	Pending Lab Result
NPHRL	81	6	7	59	5	4
Total	81	6	7	59	5	4

Summary of COVID-19 Contact Tracing in Response Counties

County	New Contacts Line listed	Cumulative Contacts	No. of Health Care Workers as Contacts	Cumulative no. of Health Care Workers as contacts	Contacts became a case	Cumulative contacts that became a case	Contacts Completed 14 Days	Cumulative Contacts Completing 14 Days	Contacts Under Follow-up	Contacts lost to Follow-up
Montserratado	35	4088	0	451	0	160	15	3698	316	3
Margibi	0	460	0	124	0	40	30	345	75	0
Grand Bassa	75	213	0	65	0	9	0	129	75	0
Sinoe	0	181	0	29	0	1	0	179	2	0
Gbarpolu	0	87	0	13	0	8	0	53	34	0
Lofa	0	738	0	92	0	31	0	496	226	0
Nimba	0	569	0	53	0	24	3	504	37	8
Bong	0	272	0	70	0	28	19	166	104	2
Grand CapeMount	0	21	0	0	0	0	0	0	0	0
RiverGee	0	123	0	13	0	30	0	75	48	0
Maryland	0	83	0	30	0	7	0	0	83	0
Bomi	0	70	0	10	0	8	0	0	70	0
Rivecess	0	22	0	15	0	0	0	0	22	0
Grand Kru	26	197	89	133	4	13	0	0	184	0
Grand Gedeh	14	14	0	0	0	0	0	0	14	0
National	150	7138	89	1098	4	359	67	5645	1290	13

Active Case Finding (16 March – 21 July 2020)

County	Visitation				Identification, Investigation & Testing								Supervision		
	No. of communities Assigned	No. of communities Visited	No. of Households Assigned	No. of Households Visited	Sick persons Identified	Cumulative Sick persons identified	Sick persons referred for Investigation	Cumulative Sick person referred for Investigation	Sick persons Investigated	Cumulative Sick persons Investigated	Sick persons investigated and referred for testing	Cumulative Sick persons investigated and referred for testing	No. of Sick persons followed-up today	No. of supervision visits	No. of Supervisory Calls
Bomi	127	16	640	640	0	0	0	0	0	0	0	0	0	2	0
Bong	333	202	48611	5288	6	253	6	253	6	253	6	2	7	0	0
Montserrado	250	0	0	87897	0	559	0	357	0	338	0	289	0	0	0
Margibi	15	15	15	130	0	4	0	4	0	16	0	10	7	8	7
Maryland	0	0	278	278	2	3	2	3	2	3	2	3	2	0	0
Grand Cape Mont	1	1	19	19	0	0	0	0	0	0	0	0	0	0	0
Grand Kru	100	50	2000	1000	0	16	0	16	0	16	0	16	0	3	7
Sinoe	90	90	5232	2534	0	619	0	169	0	169	0	1	0	5	5
Rivercess	33	33	495	495	0	0	0	0	0	0	0	0	0	0	0
River Gee	100	80	50	20	0	24	0	24	0	24	0	24	37	6	0
Gbarpolu	54	54	1,270	409	0	221	0	221	0	221	0	25	39	0	0
Grand Bassa	20	20	234	234	15	294	15	294	15	294	15	0	0	0	0
Nimba	430	381	2460	1639	2	54	2	54	2	54	2	36	3	0	0
Lofa	393	393	691	691	0	75	0	75	0	75	0	75	0	37	211
National	1913	1282	61266	100779	25	1828	25	1176	25	1463	25	479	95	61	230

Thank you for Listening