



# **Liberia COVID-19 Daily Sitrep 129 (22<sup>th</sup> July 2020)**

# Summary of COVID-19 Cases by Reporting County, Liberia, 16 March – 22 July 2020

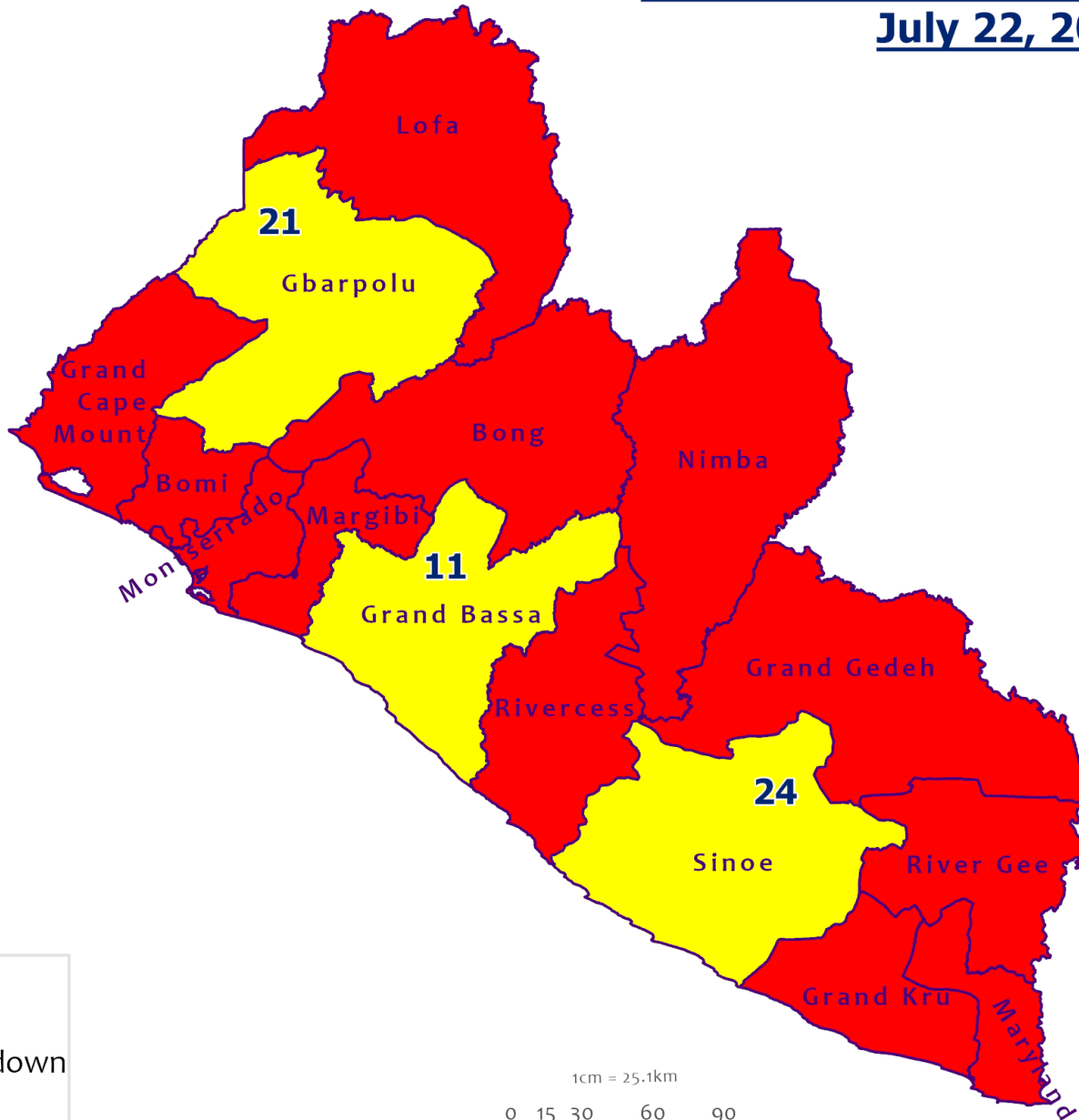
County			Confirmed Cumulative Cases
	Confirmed Cases	Cases on Contact List	
Bomi	0	0	14
Bong	0	0	35
Gbarpolu	0	0	10
Grand Bassa	0	0	10
Grand Cape Mount	0	0	1
Grand Kru	0	0	13
Grand Gedeh	0	0	1
Lofa	1	0	42
Margibi	1	1	64
Maryland	0	0	23
Montserrado	1	0	810
Nimba	0	0	52
Rivercess	0	0	1
River Gee	0	0	36
Sinoe	0	0	5
<b>NATIONAL</b>	<b>3</b>	<b>1</b>	<b>1117</b>

# Demographic Breakdown (Gender & Age) of Confirmed COVID-19 Cases (16 March – 22 July 2020)

County	<15 years		15 - 34		35 - 54		55+		All ages		Total Confirmed
	M	F	M	F	M	F	M	F	M	F	
Bomi	2	2	1	2	4	2	0	1	7	7	14
Bong	3	1	1	5	8	7	7	3	19	16	35
Gbarpolu	1	2	0	2	3	1	1	0	5	5	10
Grand Bassa	1	0	2	6	0	1	0	0	3	7	10
Grand Cape Mount	0	0	0	0	0	0	1	0	1	0	1
Grand Kru	0	0	2	4	2	4	1	0	5	8	13
Grand Gedeh	0	0	0	0	1	0	0	0	1	0	1
<b>Lofa</b>	<b>2</b>	<b>3</b>	<b>8</b>	<b>3</b>	<b>13</b>	<b>5</b>	<b>7</b>	<b>1</b>	<b>30</b>	<b>12</b>	<b>42</b>
Margibi	4	3	13	9	16	6	7	6	40	24	64
Maryland	1	0	8	4	5	2	1	2	15	8	23
Montserrado	36	35	210	106	212	89	83	39	541	269	810
Nimba	0	2	13	5	24	2	3	3	40	12	52
Rivercess	0	0	0	1	0	0	0	0	0	1	1
River Gee	0	0	4	3	19	5	5	0	28	8	36
Sinoe	0	0	1	0	3	1	0	0	4	1	5
<b>National</b>	<b>50</b>	<b>48</b>	<b>263</b>	<b>150</b>	<b>310</b>	<b>125</b>	<b>116</b>	<b>55</b>	<b>739</b>	<b>378</b>	<b>1117</b>

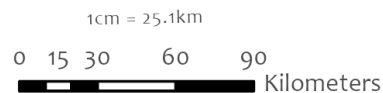


# Counties COVID-19 Status in Liberia July 22, 2020



**County Status**

- Preparedness
- 28-Day Countdown
- Response



Data Source: NPHI/MoH

# Demographic Breakdown (Gender & Age) of Confirmed COVID-19 Deaths (16 March – 22 July 2020)

County	<15 years		15 - 34		35 - 54		55+		All ages		Total Confirmed
	M	F	M	F	M	F	M	F	M	F	
Bong	0	0	1	0	0	0	3	1	4	1	5
Gbarpolu	0	0	0	0	1	0	1	0	2	0	2
Grand Bassa	0	0	0	0	0	0	0	0	0	0	0
Grand Kru	0	0	0	0	0	0	0	0	0	0	0
<b>Lofa</b>	<b>0</b>	<b>0</b>	<b>1</b>	<b>0</b>	<b>1</b>	<b>1</b>	<b>6</b>	<b>1</b>	<b>8</b>	<b>2</b>	<b>10</b>
Margibi	0	0	0	1	1	1	0	2	1	4	5
Maryland	0	0	0	0	0	0	1	1	1	1	2
Montserrado	0	0	1	0	7	7	14	7	22	14	36
Nimba	0	0	2	0	3	1	3	0	8	1	9
Rivercess	0	0	0	1	0	0	0	0	0	1	1
River Gee	0	0	0	0	0	0	0	0	0	0	0
Sinoe	0	0	1	0	0	0	0	0	1	0	1
<b>National</b>	<b>0</b>	<b>0</b>	<b>6</b>	<b>2</b>	<b>13</b>	<b>10</b>	<b>28</b>	<b>12</b>	<b>47</b>	<b>24</b>	<b>71</b>

# Summary of COVID-19 Deaths by Reporting County, Liberia, 16 March – 22 July 2020

County	DAILY REPORT								Cumulative Deaths
	New Suspected Deaths	Laboratory Confirmed Deaths						Confirmed Deaths on Contact List	
		COVID-19 Treatment Unit	Total in COVID-19 Treatment Unit	Health Facility	Total in Health Facility	Community	Total in Community		
Bong	0	0	0	0	4	0	1	0	5
Gbarpolu	0	0	0	0	1	0	0	0	1
Grand Bassa	0	0	0	0	0	0	0	0	0
Grand Kru	0	0	0	0	0	0	0	0	0
<b>Lofa</b>	<b>0</b>	<b>0</b>	<b>0</b>	<b>0</b>	<b>5</b>	<b>1</b>	<b>5</b>	<b>0</b>	<b>10</b>
Maryland	0	0	0	0	2	0	0	0	2
Margibi	0	0	0	0	5	0	0	0	5
Montserrado	0	0	6	0	16	0	15	0	37
Nimba	0	0	1	0	4	0	4	0	9
Rivercess	0	0	0	0	1	0	0	0	1
River Gee	0	0	0	0	0	0	0	0	0
Sinoe	0	0	0	0	1	0	0	0	1
<b>National</b>	<b>0</b>	<b>0</b>	<b>7</b>	<b>0</b>	<b>39</b>	<b>1</b>	<b>25</b>	<b>0</b>	<b>71</b>

The Liberia Case Fatality rate (CFR) officially considered is for deaths that occurred among patients in care at the COVID-19 treatment units across the country. As of 13 July 2020, a total of 7 deaths have been recorded CFR=0.6%. The country is however keeping active surveillance on community deaths and deaths in non COVID-19 treatment health units.



# Cadre Cases and Deaths by Health Care Workers (16 March – 22 July 2020)

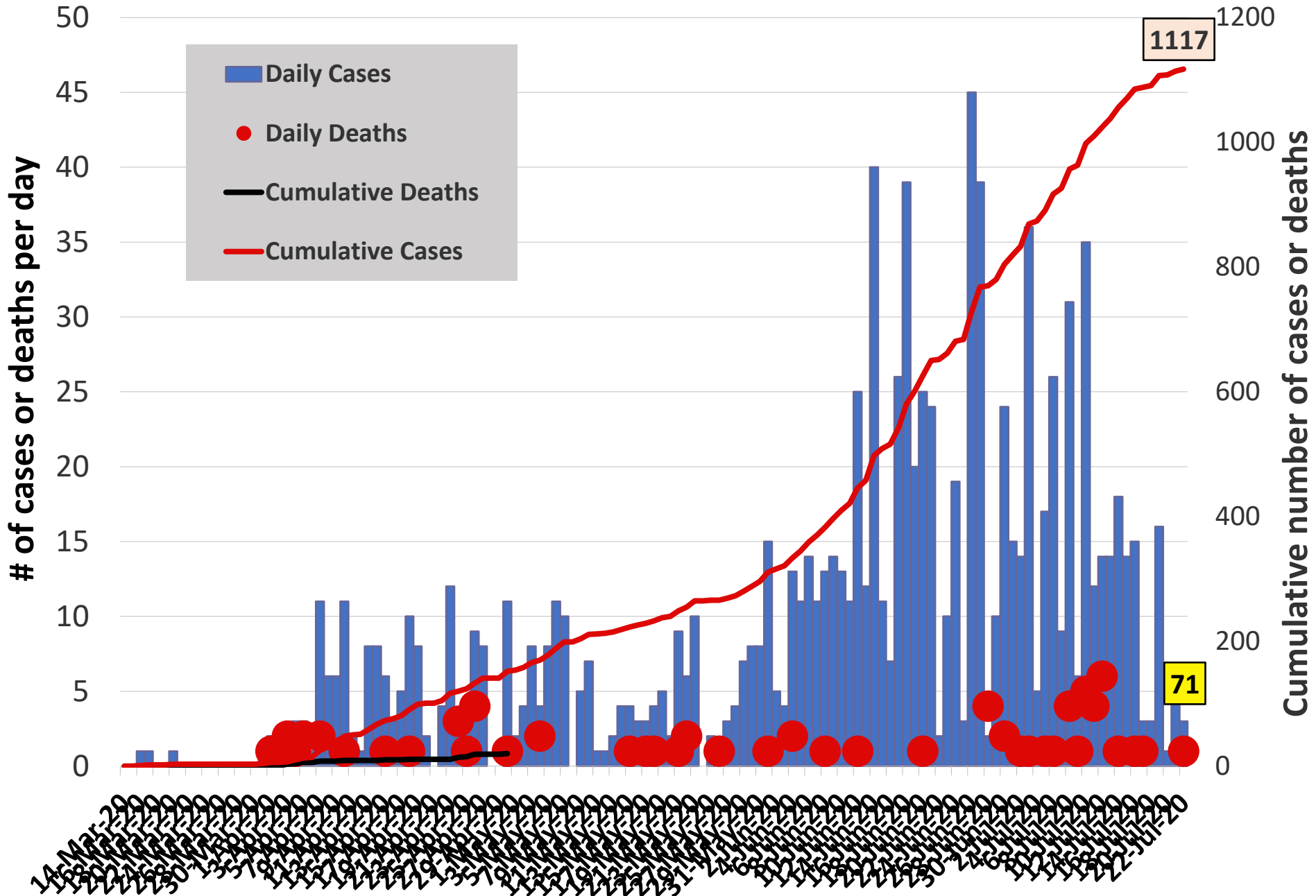
Health Care Worker Cadre	Montserratado		Margibi		Nimba		River Gee		Sinoe		Grand Kru		Gbarpolu		Bong		Lofa		Grand Bassa		Maryland		Bomi		National (Total)	
	Cases	Deaths	Cases	Deaths	Cases	Deaths	Cases	Deaths	Cases	Deaths	Cases	Deaths	Cases	Deaths	Cases	Deaths	Cases	Deaths	Cases	Deaths	Cases	Deaths	Cases	Deaths	Cases	Deaths
Doctors	10	0	1	0	0	0	1	0	0	0	0	0	0	0	1	0	0	0	0	0	0	0	0	0	13	0
Pharmacists	2	0	0	0	0	0	0	0	0	0	0	0	0	0	0	0	0	0	0	0	0	0	0	0	2	0
Nurses	23	1	2	0	1	0	5	0	0	0	2	0	1	1	12	1	8	0	3	0	1	0	1	0	59	3
Nurse Aid	0	0	0	0	2	0	0	0	0	0	4	0	0	0	0	0	0	0	0	0	2	0	0	0	8	0
Midwife	0	0	0	0	0	0	1	0	0	0	0	0	0	0	1	0	1	0	0	0	0	0	0	0	3	0
Radiologist	1	0	0	0	0	0	0	0	0	0	0	0	0	0	0	0	0	0	0	0	0	0	0	0	1	0
Physician Assistants	6	0	1	0	1	0	1	0	0	0	0	0	0	0	0	0	1	0	0	0	0	0	0	0	10	0
Lab Technician	6	0	1	0	2	0	0	0	1	0	1	0	0	0	0	0	2	0	0	0	10	0	0	0	23	0
Environmental Health Technicians	5	0	0	0	0	0	0	0	0	0	0	0	0	0	0	0	0	0	0	0	0	0	0	0	5	0
Microbiologist	1	0	0	0	0	0	0	0	0	0	0	0	0	0	0	0	0	0	0	0	0	0	0	0	1	0
Epidemiologist	1	0	0	0	0	0	0	0	0	0	0	0	0	0	0	0	0	0	0	0	0	0	0	0	1	0
Dieticians	0	0	7	1	0	0	0	0	0	0	0	0	0	0	0	0	0	0	0	0	0	0	0	0	7	1
Dispenser	0	0	0	0	0	0	0	0	0	0	0	0	0	0	2	1	0	0	0	0	0	0	0	0	2	1
Licensed Practical Nurse	0	0	0	0	0	0	0	0	0	0	0	0	0	0	1	1	0	0	0	0	0	0	0	0	1	1
Psychosocial Worker	1	0	0	0	0	0	0	0	0	0	0	0	0	0	0	0	0	0	0	0	0	0	0	0	1	0
Hygienist	0	0	0	0	0	0	0	0	0	0	0	0	0	0	1	0	0	0	0	0	0	0	0	0	1	0
Logistician	0	0	0	0	0	0	0	0	0	0	0	0	0	0	0	0	0	0	1	0	0	0	0	0	1	0
Vaccinator	0	0	0	0	1	0	0	0	0	0	0	0	0	0	0	0	0	0	0	0	0	0	1	0	2	0
Ambulance Driver	2	0	0	0	0	0	0	0	0	0	0	0	0	0	0	0	2	0	0	0	0	0	0	0	4	0
Procurement Officer	0	0	0	0	0	0	0	0	1	0	0	0	0	0	0	0	0	0	0	0	0	0	0	0	1	0
Registrar/ Accountant	2	0	0	0	0	0	0	0	0	0	0	0	0	0	0	0	0	0	0	0	0	0	1	0	3	0
CHT Secretary	0	0	0	0	0	0	1	0	0	0	0	0	0	0	0	0	0	0	0	0	0	0	0	0	1	0
Hospital Administrator	0	0	0	0	0	0	1	0	0	0	0	0	0	0	0	0	0	0	0	0	0	0	0	0	1	0
Hospital Cleaner	1	0	0	0	0	0	0	0	0	0	1	0	0	0	1	0	0	0	0	0	1	0	0	0	4	0
CHT CHV/ CHSS	0	0	0	0	0	0	0	0	0	0	3	0	0	0	0	0	1	0	0	0	0	0	0	0	4	0
GIS Specialist	1	0	0	0	0	0	0	0	0	0	0	0	0	0	0	0	0	0	0	0	0	0	0	0	1	0
Others	7	0	0	0	0	0	0	0	0	0	0	0	0	0	0	0	0	0	0	0	0	0	0	0	7	0
<b>Total:</b>	<b>69</b>	<b>1</b>	<b>12</b>	<b>1</b>	<b>7</b>	<b>0</b>	<b>10</b>	<b>0</b>	<b>2</b>	<b>0</b>	<b>11</b>	<b>0</b>	<b>1</b>	<b>1</b>	<b>19</b>	<b>3</b>	<b>15</b>	<b>0</b>	<b>4</b>	<b>0</b>	<b>14</b>	<b>0</b>	<b>3</b>	<b>0</b>	<b>167</b>	<b>6</b>



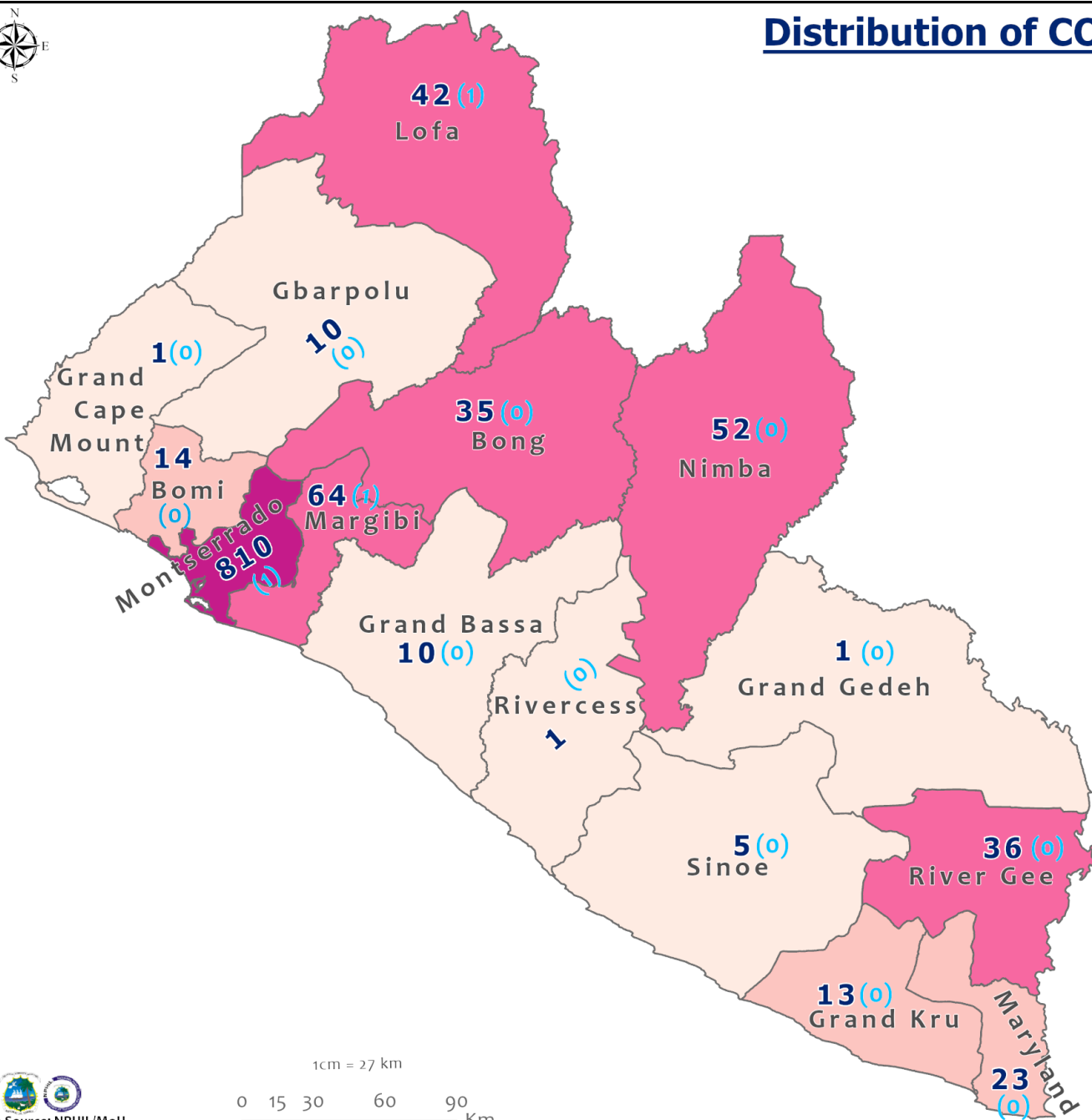
# Suspected and High Risk Cases and Deaths (16 March – 22 July 2020)

County	New Suspected	Cumulative Suspected	New High Risk	Cumulative High Risk	New Suspected Deaths	Cumulative Suspected Deaths
<b>Montserrat</b>	16	6210	0	0	0	79
<b>Margibi</b>	0	9	0	44	0	1
<b>Maryland</b>	0	27	0	20	0	5
<b>Bong</b>	0	22	0	159	0	3
<b>Rivercess</b>	0	3	0	7	0	1
<b>River Gee</b>	0	39	0	46	0	0
<b>Lofa</b>	0	75	0	74	0	54
<b>Grand Cape Mount</b>	0	21	0	0	0	0
<b>Bomi</b>	0	9	0	81	0	0
<b>Sinoe</b>	0	46	0	54	0	7
<b>Grand Gedeh</b>	0	0	0	14	0	0
<b>Grand Kru</b>	0	0	0	88	0	0
<b>Gbarpolu</b>	0	91	0	13	0	0
<b>Grand Bassa</b>	0	43	0	32	0	0
<b>Nimba</b>	0	193	0	185	0	13
<b>National</b>	<b>16</b>	<b>6788</b>	<b>0</b>	<b>817</b>	<b>0</b>	<b>163</b>

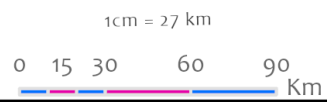
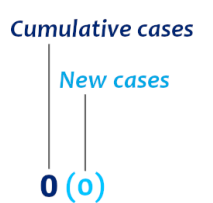
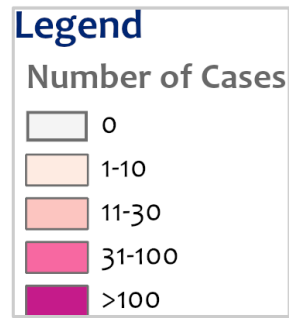
# EPI-Curve of Confirmed Cases and Deaths



# Distribution of COVID-19 Cases by County in Liberia - July 22, 2020



Total cumulative cases:  
**1117**  
 Total new cases:  
**3**



# COVID-19 Cases by District in Liberia - July 22, 2020



**Total Cases: 1117**

Affected Counties	Cumulative Cases
Montserrado	810
Margibi	64
Nimba	52
Lofa	42
River Gee	36
Bong	35
Maryland	23
Bomi	14
Grand Kru	13
Grand Bassa	10
Gbarpolu	10
Sinoe	5
Grand Cape Mount	1
Rivercess	1
Grand Gedeh	1

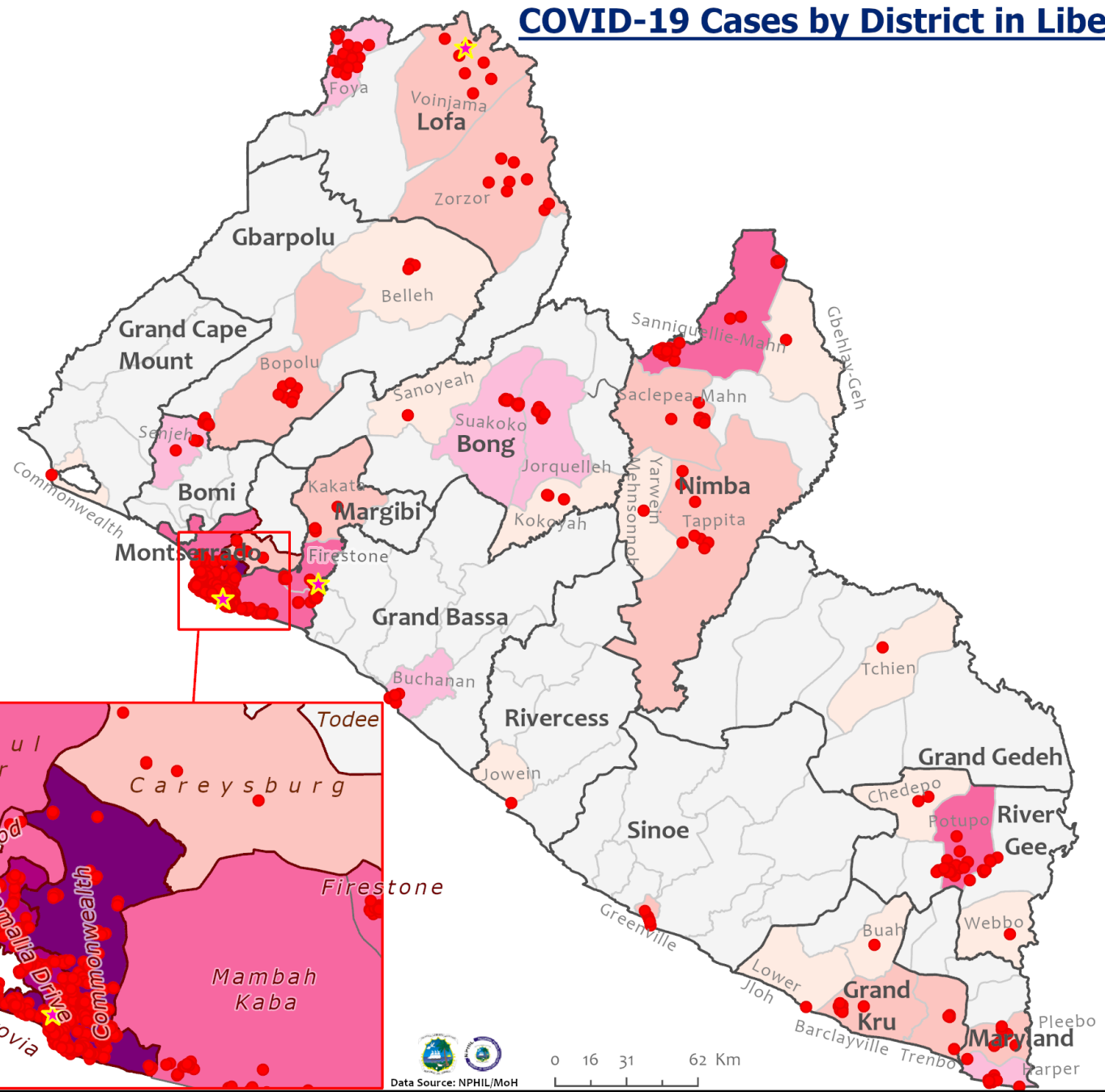
**Legend**

**Case Status**

- ★ New confirmed cases
- Confirmed cases

**Cases / District**

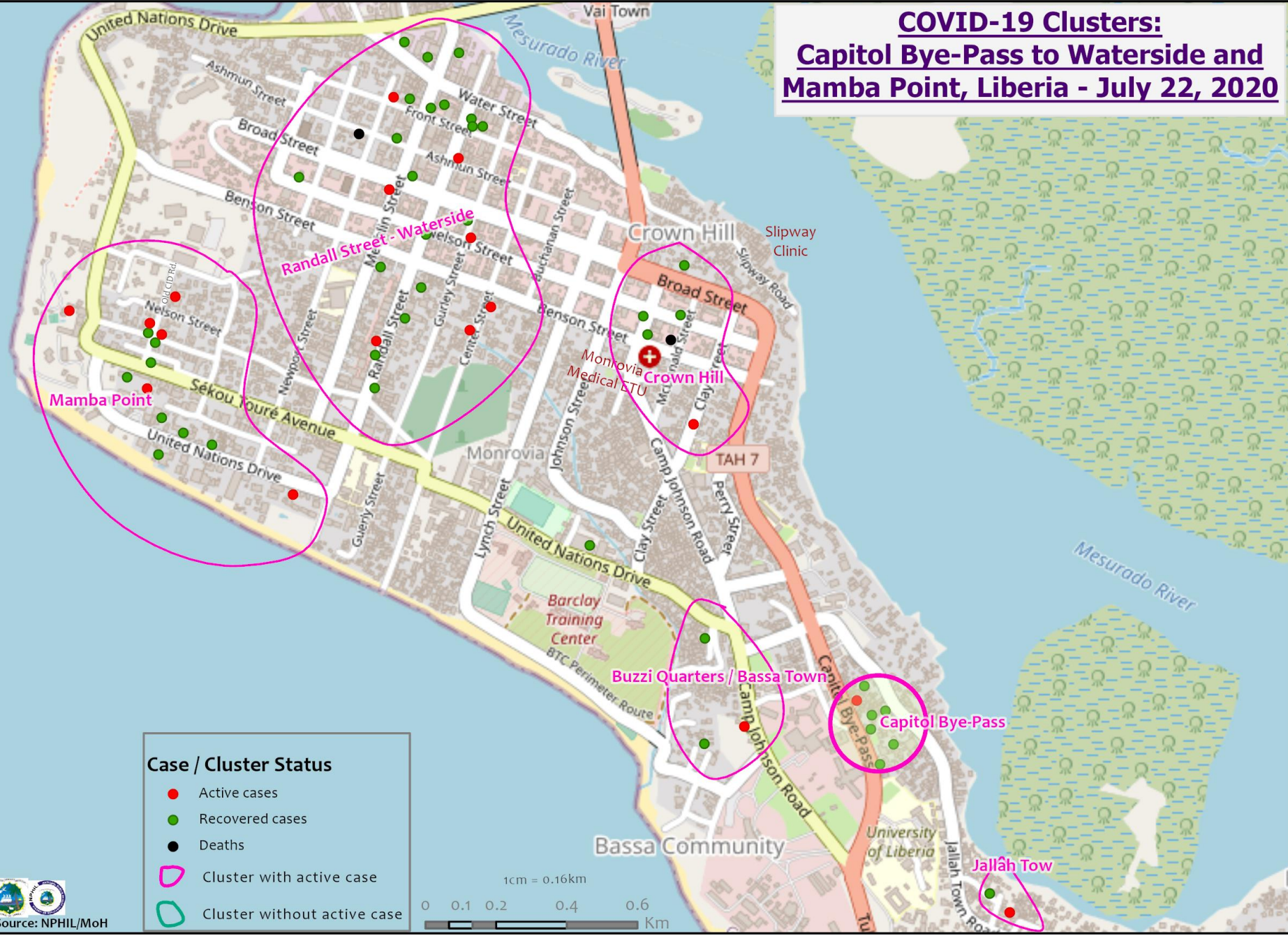
- 0
- 1-3
- 4-10
- 11-20
- 21-68
- 69-86
- 87-358





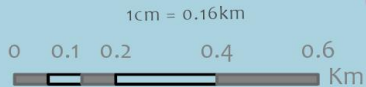


# COVID-19 Clusters: Capitol Bye-Pass to Waterside and Mamba Point, Liberia - July 22, 2020



**Case / Cluster Status**

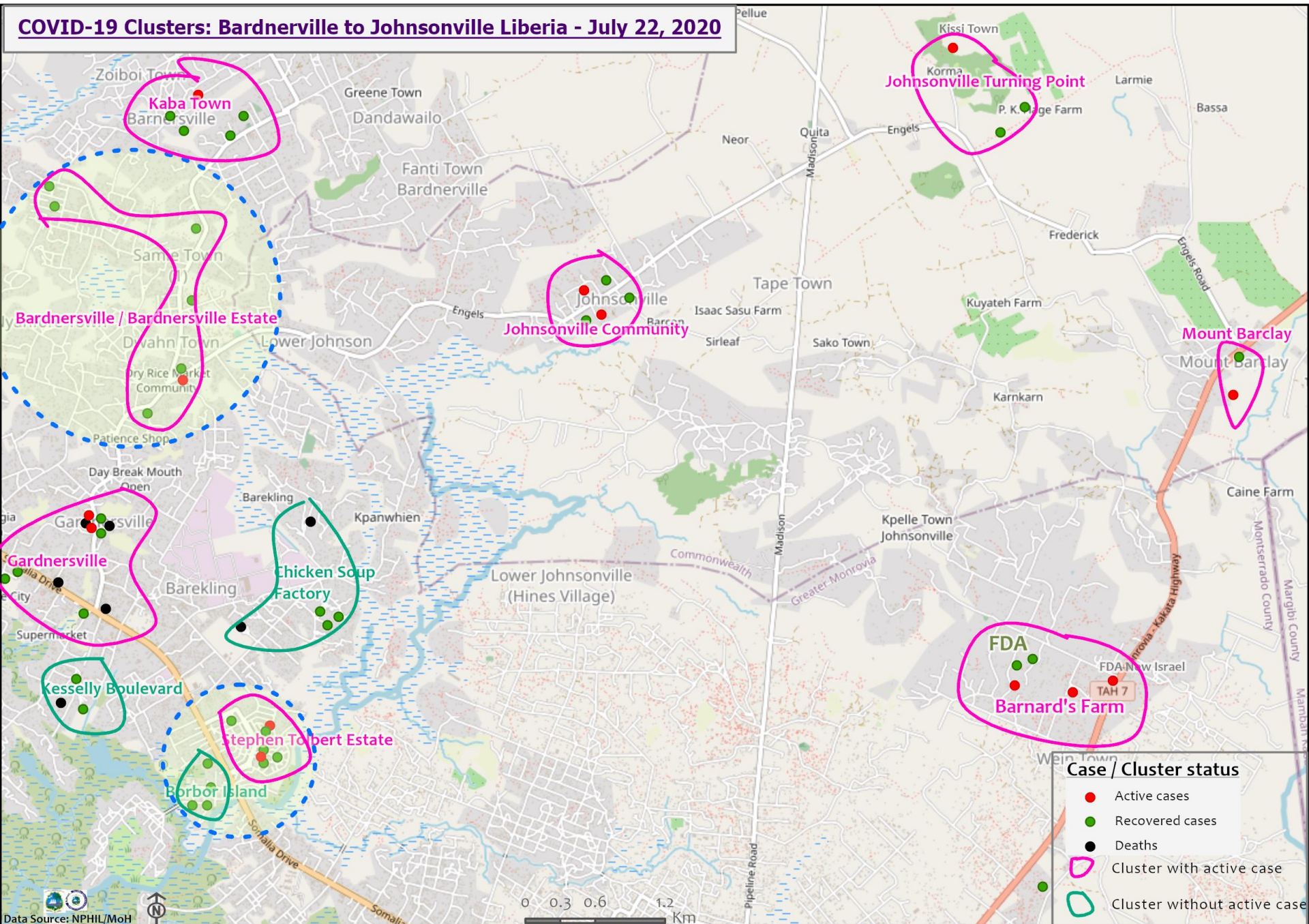
- Active cases
- Recovered cases
- Deaths
- Cluster with active case
- Cluster without active case







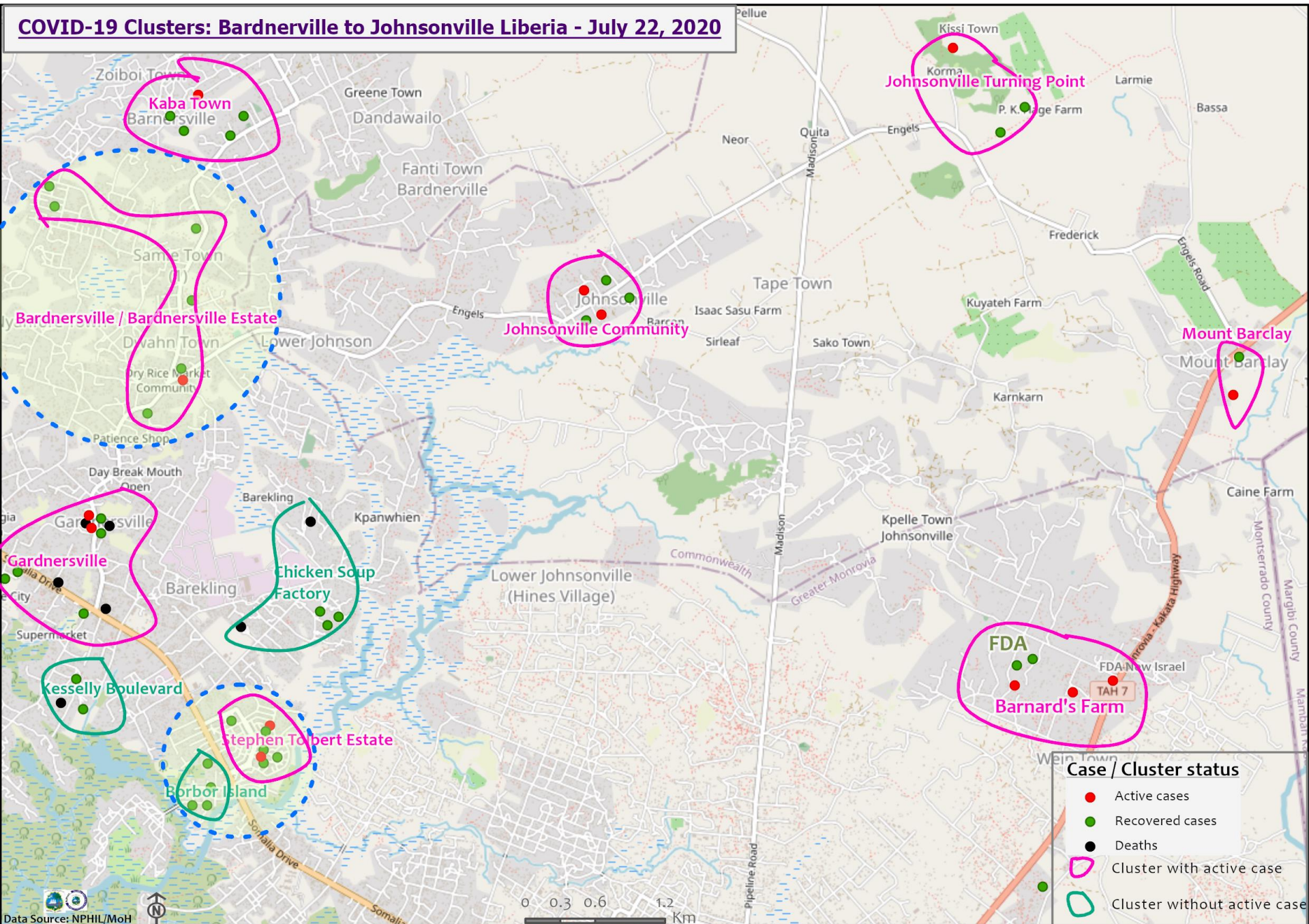
# COVID-19 Clusters: Bardnerville to Johnsonville Liberia - July 22, 2020



**Case / Cluster status**

- Active cases
- Recovered cases
- Deaths
- Cluster with active case
- Cluster without active case

# COVID-19 Clusters: Bardnerville to Johnsonville Liberia - July 22, 2020



**Case / Cluster status**

- Active cases
- Recovered cases
- Deaths
- Cluster with active case
- Cluster without active case

# Precautionary Observation Centers (POC): Admission and Discharges

County	Precautionary Observation Centers				Cumulative Move to Treatment
	New admissions	Currently in POC	Daily Discharges	Cumulative Discharges (not including transferred)	
Bomi	0	0	0	0	0
Gbarpolu	0	0	0	0	0
Grand Bassa	0	0	0	42	0
Grand Kru	0	29	0	0	0
Margibi	0	29	0	87	0
Maryland	0	4	0	2	0
Montserrado	0	13	0	87	0
Nimba	0	2	1	33	0
River Gee	0	10	0	8	0
Sinoe	0	2	0	179	0
Lofa	0	25	0	332	0
<b>NATIONAL</b>	<b>0</b>	<b>114</b>	<b>1</b>	<b>770</b>	<b>0</b>

# 14 Military Hospital, Union & Duside Treatment Center Daily Report – July 22, 2020

Treatment Facility Name	New admissions	Daily Discharges	Cumulative Recoveries	Daily Deaths	Cumulative Deaths	*Currently in treatment	Number of Available beds
14 Military Hospital Treatment Unit	2	0	439	0	6	18	92
Union Treatment Center	1	5	42	0	0	22	31
Duside Hospital Treatment Unit	0	0	29	0	1	6	13
<b>TOTAL</b>	<b>3</b>	<b>5</b>	<b>510</b>	<b>0</b>	<b>7</b>	<b>46</b>	<b>136</b>

Demographic Breakdown of Cases												
Treatment Facility Name	Total Census	Total Adult	Total Children	Total Female	Total Male	Total Confirm	Others	Pregnant	Children			
									<1	1-5	6-10	11-17
14 Military Hospital Treatment Unit	18	18	0	5	13	18	0	0	0	0	0	0
Union Treatment Center	22	18	4	10	12	22	0	0	1	0	2	1
Duside Hospital Treatment Unit	6	5	1	2	4	6	0	0	0	0	0	1
<b>TOTAL</b>	<b>46</b>	<b>41</b>	<b>5</b>	<b>17</b>	<b>29</b>	<b>46</b>	<b>0</b>	<b>0</b>	<b>1</b>	<b>0</b>	<b>2</b>	<b>2</b>

# Recoveries from Treatment Units (16 March – 22 July 2020)

<b>COVID-19 Treatment Units</b>				
<b>Treatment Unit</b>	<b>New admissions</b>	<b>Cumulative admissions</b>	<b>Recoveries</b>	<b>Cumulative Recoveries</b>
14 Military Hospital & Union Treatment Center, Montserrado	3	520	5	483
Chief Jallahlone Hospital, Gbarpolu	0	3	0	1
Jackson F. Doe Hospital, Nimba	0	5	0	1
E&J Medical Center, Nimba	0	15	0	8
Ganta Methodist Hospital, Nimba	0	1	0	1
AML Yekepa, Nimba	0	11	0	7
Pleebo Health Center, Maryland	0	12	3	10
JJ Dossen Hospital, Maryland	0	9	5	5
Rally Time Hospital, Grand Kru	0	3	0	1
Sasstown Health Center, Grand Kru	1	6	0	0
Behwan Health Center	3	3	0	0
Fish Town Hospital, River Gee	0	32	0	7
St. Timothy Hospital, Grand Cape Mount	0	1	0	0
Liberia Government Hospital, Bomi	0	12	5	7
Tellewoyan Hospital, Lofa	0	13	0	11
Foya Hospital, Lofa	0	11	0	5
Curran Hospital, Lofa	0	4	3	3
Phebe Hospital, Bong	0	25	0	22
Liberia Government Hospital, Grand Bassa	0	4	0	3
Arcelor Mittal, Grand Bassa	0	5	0	5
Duside Hospital, Margibi	0	36	0	29
F. J. Grant Hospital, Sinoe	0	4	0	4
<b>Total</b>	<b>7</b>	<b>735</b>	<b>21</b>	<b>613</b>

# Admissions, Currently in Treatment, and Discharges

COVID-19 Treatment Units									
Treatment Unit	New admissions	Cumulative admissions	Discharges	Cumulative Discharges	Currently in Treatment Unit	Total Males	Total Females	0-35 yrs	36+ yrs
Liberia Government Hospital, Bomi	0	12	5	7	6	3	3	3	3
Phebe Hospital, Bong	0	25	0	21	2	0	2	0	2
Chief Jallahlone Hospital, Gbarpolu	0	3	0	1	0	0	0	0	0
Arcelor Mittal, Grand Bassa	0	5	0	5	0	0	0	0	0
Liberia Government Hospital, Grand Bassa	0	3	0	3	0	0	0	0	0
St. Timothy Hospital, Grand Cape Mount	0	1	0	0	1	1	0	0	1
Rally Time Hospital, Grand Kru	0	3	0	1	2	1	1	2	0
Sasstown HC, Grand Kru	1	7	0	0	7	3	4	2	5
Behwan, Grand Kru	3	3	0	0	3	0	3	1	2
Tellewoyan Hospital, Lofa	0	13	0	11	2	1	1	0	2
Foya Burma Hospital, Lofa	0	11	0	0	6	3	3	1	5
Curran Hospital, Lofa	0	4	3	3	1	1	0	0	1
Pleebo Health Center, Maryland	0	12	3	10	2	2	0	2	0
JJ Dossen Hospital, Maryland	0	9	5	5	4	1	3	2	2
Jackson F. Doe Hospital, Nimba	0	5	0	1	3	3	0	3	0
E&J Medical Center, Nimba	0	15	0	8	7	6	1	0	7
AML Yekepa, Nimba	0	11	0	7	4	2	2	4	0
Ganta Methodist Hospital, Nimba	0	1	0	1	0	0	0	0	0
Fish Town Hospital, River Gee	0	35	0	7	28	24	4	9	19
F. J. Grant Hospital, Sinoe	0	4	0	4	0	0	0	0	0
<b>Total</b>	<b>4</b>	<b>182</b>	<b>16</b>	<b>95</b>	<b>78</b>	<b>51</b>	<b>27</b>	<b>29</b>	<b>49</b>

## Laboratory Samples Evaluated – July 22, 2020

<b>Laboratory</b>	<b>Total</b>	<b>New Positive</b>	<b>Repeat Positive</b>	<b>Initial Negative</b>	<b>Repeat Test Negative</b>	<b>Pending Lab Result</b>
<b>NPHRL</b>	<b>81</b>	<b>3</b>	<b>6</b>	<b>38</b>	<b>19</b>	<b>17</b>
<b>Total</b>	<b>81</b>	<b>3</b>	<b>6</b>	<b>38</b>	<b>19</b>	<b>17</b>

# Summary of COVID-19 Contact Tracing in Response Counties

County	New Contacts Line listed	Cumulative Contacts	No. of Health Care Workers as Contacts	Cumulative no. of Health Care Workers as contacts	Contacts became a case	Cumulative contacts that became a case	Contacts Completed 14 Days	Cumulative Contacts Completing 14 Days	Contacts Under Follow-up	Contacts lost to Follow-up
<b>Montserrado</b>	71	4159	0	451	0	160	4	3702	383	3
<b>Margibi</b>	0	460	0	124	0	40	20	365	55	0
<b>Grand Bassa</b>	0	213	0	65	0	9	0	129	75	0
<b>Sinoe</b>	0	181	0	29	0	1	0	179	2	0
<b>Gbarpolu</b>	0	87	0	13	0	8	0	53	34	0
<b>Lofa</b>	0	738	0	92	0	31	0	496	226	0
<b>Nimba</b>	0	569	0	53	0	24	0	504	37	8
<b>Bong</b>	0	274	0	70	0	28	8	174	96	2
<b>Grand CapeMount</b>	0	21	0	0	0	0	0	0	0	0
<b>RiverGee</b>	0	123	0	13	0	30	0	75	48	0
<b>Maryland</b>	0	83	0	30	0	7	0	0	83	0
<b>Bomi</b>	0	102	0	10	0	13	0	0	70	0
<b>Rivecess</b>	0	22	0	15	0	0	0	0	22	0
<b>Grand Kru</b>	0	197	0	133	0	13	0	0	184	0
<b>Grand Gedeh</b>	0	14	0	0	0	0	0	0	14	0
<b>National</b>	<b>71</b>	<b>7243</b>	<b>0</b>	<b>1098</b>	<b>0</b>	<b>364</b>	<b>32</b>	<b>5677</b>	<b>1329</b>	<b>13</b>



# Active Case Finding (16 March – 22 July 2020)

County	Visitation				Identification, Investigation & Testing								Supervision		
	No. of communities Assigned	No. of communities Visited	No. of Households Assigned	No. of Households Visited	Sick persons Identified	Cumulative Sick persons identified	Sick persons referred for Investigation	Cumulative Sick person referred for Investigation	Sick persons Investigated	Cumulative Sick persons Investigated	Sick persons investigated and referred for testing	Cumulative Sick persons investigated and referred for testing	No. of Sick persons followed-up today	No. of supervision visits	No. of Supervisory Calls
<b>Bomi</b>	127	19	850	850	0	0	0	0	0	0	0	0	0	3	0
<b>Bong</b>	333	202	48611	5288	0	253	0	253	0	253	2	2	7	0	0
<b>Montserrado</b>	250	0	0	92397	3	562	3	360	3	341	3	292	0	0	0
<b>Margibi</b>	15	15	15	128	0	4	0	4	0	16	0	10	7	8	7
<b>Maryland</b>	0	0	278	278	2	3	2	3	2	3	2	3	2	0	0
<b>Grand Cape Mount</b>	1	1	19	19	0	0	0	0	0	0	0	0	0	0	0
<b>Grand Kru</b>	100	50	2000	1000	0	16	0	16	0	16	0	16	0	3	7
<b>Sinoe</b>	90	90	5232	2534	0	619	169	169	0	169	0	1	0	5	5
<b>Rivercess</b>	33	33	495	495	0	0	0	0	0	0	0	0	0	0	0
<b>River Gee</b>	100	80	50	20	0	24	0	24	0	24	0	24	37	6	0
<b>Gbarpolu</b>	54	54	1,270	409	0	221	0	221	0	221	0	25	39	0	0
<b>Grand Bassa</b>	20	20	234	234	15	294	15	294	15	294	0	0	0	0	0
<b>Nimba</b>	430	381	2460	1639	0	54	0	54	0	54	0	36	3	0	0
<b>Lofa</b>	348	348	669	669	0	75	0	75	0	75	0	75	0	48	216
<b>National</b>	<b>1868</b>	<b>1240</b>	<b>61454</b>	<b>105465</b>	<b>5</b>	<b>1831</b>	<b>189</b>	<b>1179</b>	<b>5</b>	<b>1466</b>	<b>5</b>	<b>482</b>	<b>95</b>	<b>73</b>	<b>235</b>

**Thank you for Listening**