



Liberia COVID-19 Daily Sitrep 130 (23th July 2020)

Summary of COVID-19 Cases by Reporting County, Liberia, 16 March – 23 July 2020

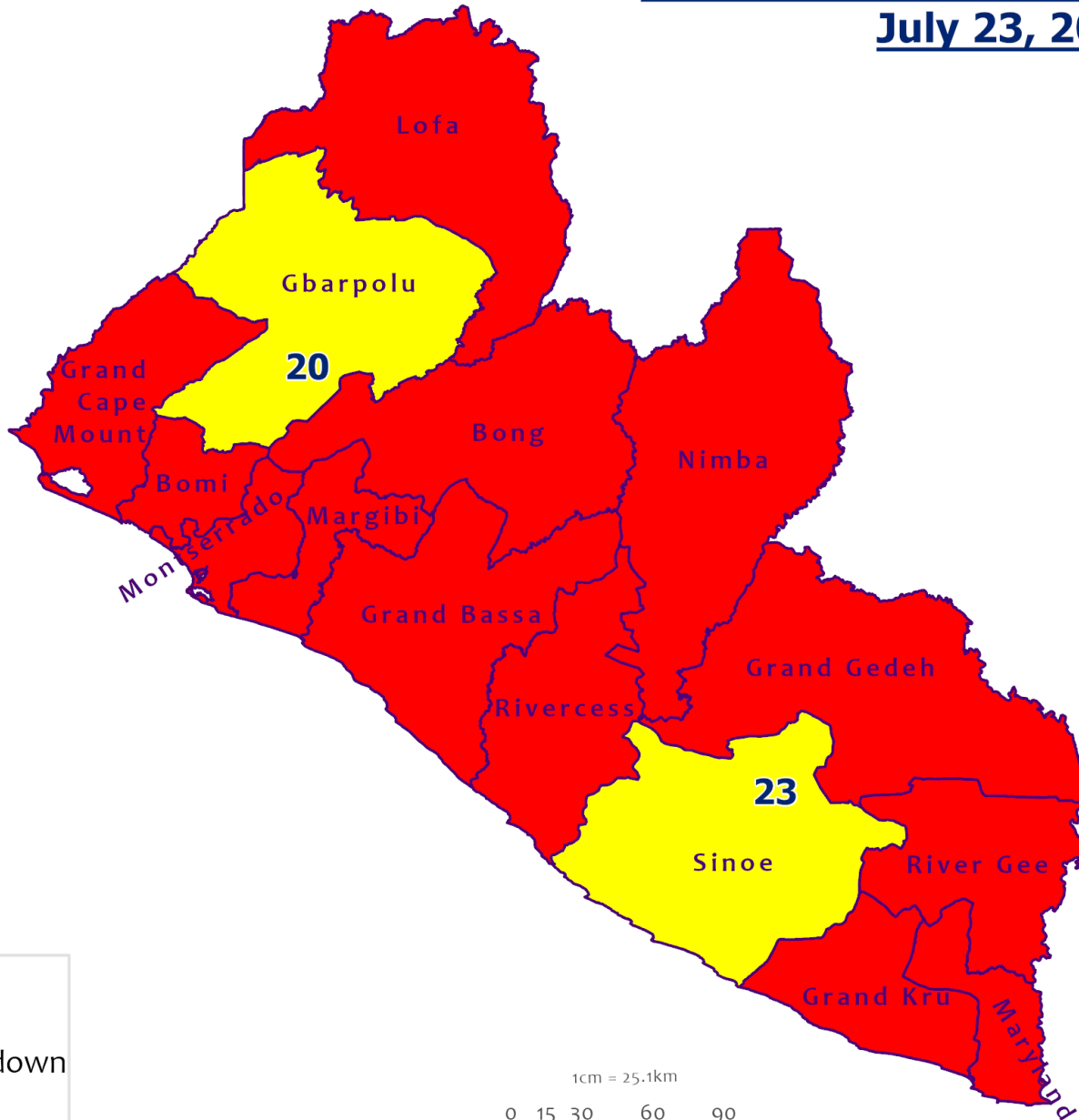
County			Confirmed Cumulative Cases
	Confirmed Cases	Cases on Contact List	
Bomi	0	0	14
Bong	0	0	35
Gbarpolu	0	0	10
Grand Bassa	7	7	17
Grand Cape Mount	0	0	1
Grand Kru	0	0	13
Grand Gedeh	2	2	3
Lofa	0	0	42
Margibi	2	2	66
Maryland	0	0	23
Montserrado	7	0	817
Nimba	0	0	52
Rivercess	0	0	1
River Gee	0	0	36
Sinoe	0	0	5
NATIONAL	18	11	1135

Demographic Breakdown (Gender & Age) of Confirmed COVID-19 Cases (16 March – 23 July 2020)




County	<15 years		15 - 34		35 - 54		55+		All ages		Total Confirmed
	M	F	M	F	M	F	M	F	M	F	
Bomi	2	2	1	2	4	2	0	1	7	7	14
Bong	3	1	1	5	8	7	7	3	19	16	35
Gbarpolu	1	2	0	2	3	1	1	0	5	5	10
Grand Bassa	1	0	3	6	1	4	1	1	6	11	17
Grand Cape Mount	0	0	0	0	0	0	1	0	1	0	1
Grand Kru	0	0	2	4	2	4	1	0	5	8	13
Grand Gedeh	0	0	0	1	2	0	0	0	2	1	3
Lofa	2	3	8	3	13	5	7	1	30	12	42
Margibi	6	3	13	9	16	6	7	6	42	24	66
Maryland	1	0	8	4	5	2	1	2	15	8	23
Montserrado	36	35	210	108	213	90	85	40	544	273	817
Nimba	0	2	13	5	24	2	3	3	40	12	52
Rivercess	0	0	0	1	0	0	0	0	0	1	1
River Gee	0	0	4	3	19	5	5	0	28	8	36
Sinoe	0	0	1	0	3	1	0	0	4	1	5
National	52	48	264	153	313	129	119	57	748	387	1135

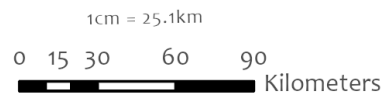


Counties COVID-19 Status in Liberia July 23, 2020



County Status

-  Preparedness
-  28-Day Countdown
-  Response



Data Source: NPHIL/MoH

Demographic Breakdown (Gender & Age) of Confirmed COVID-19 Deaths (16 March – 23 July 2020)

County	<15 years		15 - 34		35 - 54		55+		All ages		Total Confirmed
	M	F	M	F	M	F	M	F	M	F	
Bong	0	0	1	0	0	0	3	1	4	1	5
Gbarpolu	0	0	0	0	1	0	1	0	2	0	2
Grand Bassa	0	0	0	0	0	0	0	0	0	0	0
Grand Kru	0	0	0	0	0	0	0	0	0	0	0
Lofa	0	0	1	0	1	1	6	1	8	2	10
Margibi	0	0	0	1	1	1	0	2	1	4	5
Maryland	0	0	0	0	0	0	1	1	1	1	2
Montserrado	0	0	1	0	7	7	14	7	22	14	36
Nimba	0	0	2	0	3	1	3	0	8	1	9
Rivercess	0	0	0	1	0	0	0	0	0	1	1
River Gee	0	0	0	0	0	0	0	0	0	0	0
Sinoe	0	0	1	0	0	0	0	0	1	0	1
National	0	0	6	2	13	10	28	12	47	24	71

Summary of COVID-19 Deaths by Reporting County, Liberia, 16 March – 23 July 2020

County	DAILY REPORT								Cumulative Deaths
	New Suspected Deaths	Laboratory Confirmed Deaths						Confirmed Deaths on Contact List	
		COVID-19 Treatment Unit	Total in COVID-19 Treatment Unit	Health Facility	Total in Health Facility	Community	Total in Community		
Bong	0	0	0	0	4	0	1	0	5
Gbarpolu	0	0	0	0	1	0	0	0	1
Grand Bassa	0	0	0	0	0	0	0	0	0
Grand Kru	0	0	0	0	0	0	0	0	0
Lofa	0	0	0	0	5	0	5	0	10
Maryland	0	0	0	0	2	0	0	0	2
Margibi	0	0	0	0	5	0	0	0	5
Montserrado	0	0	6	0	16	0	15	0	37
Nimba	0	0	1	0	4	0	4	0	9
Rivercess	0	0	0	0	1	0	0	0	1
River Gee	0	0	0	0	0	0	0	0	0
Sinoe	0	0	0	0	1	0	0	0	1
National	0	0	7	0	39	0	25	0	71

The Liberia Case Fatality rate (CFR) officially considered is for deaths that occurred among patients in care at the COVID-19 treatment units across the country. As of 13 July 2020, a total of 7 deaths have been recorded CFR=0.6%. The country is however keeping active surveillance on community deaths and deaths in non COVID-19 treatment health units.

Daily and Cumulative Healthcare Worker (HCW) COVID-19 Cases and Deaths by County, Liberia, 16 March – 23 July 2020

County	DAILY REPORT						CUMULATIVE CASES (ALIVE & DEAD)	
	New Suspected & High Risk Cases (Alive)			New Suspect Death	Laboratory Confirmed Cases	Confirmed Cases on Contact List	Confirmed	Deaths
	Suspect	High Risk	Total					
Bomi	0	0	0	0	0	0	3	0
Bong	0	0	0	0	0	0	19	3
Gbarpolu	0	0	0	0	0	0	1	1
Grand Bassa	0	0	0	0	7	7	11	0
Grand Kru	0	0	0	0	0	0	11	0
Lofa	0	0	0	0	0	0	15	0
Margibi	0	0	0	0	0	0	12	1
Maryland	0	0	0	0	0	0	14	0
Montserrado	0	0	0	0	0	0	70	1
Nimba	0	0	0	0	0	0	7	0
River Gee	0	0	0	0	0	0	9	0
Sinoe	0	0	0	0	0	0	2	0
NATIONAL	0	0	0	0	7	7	174	6

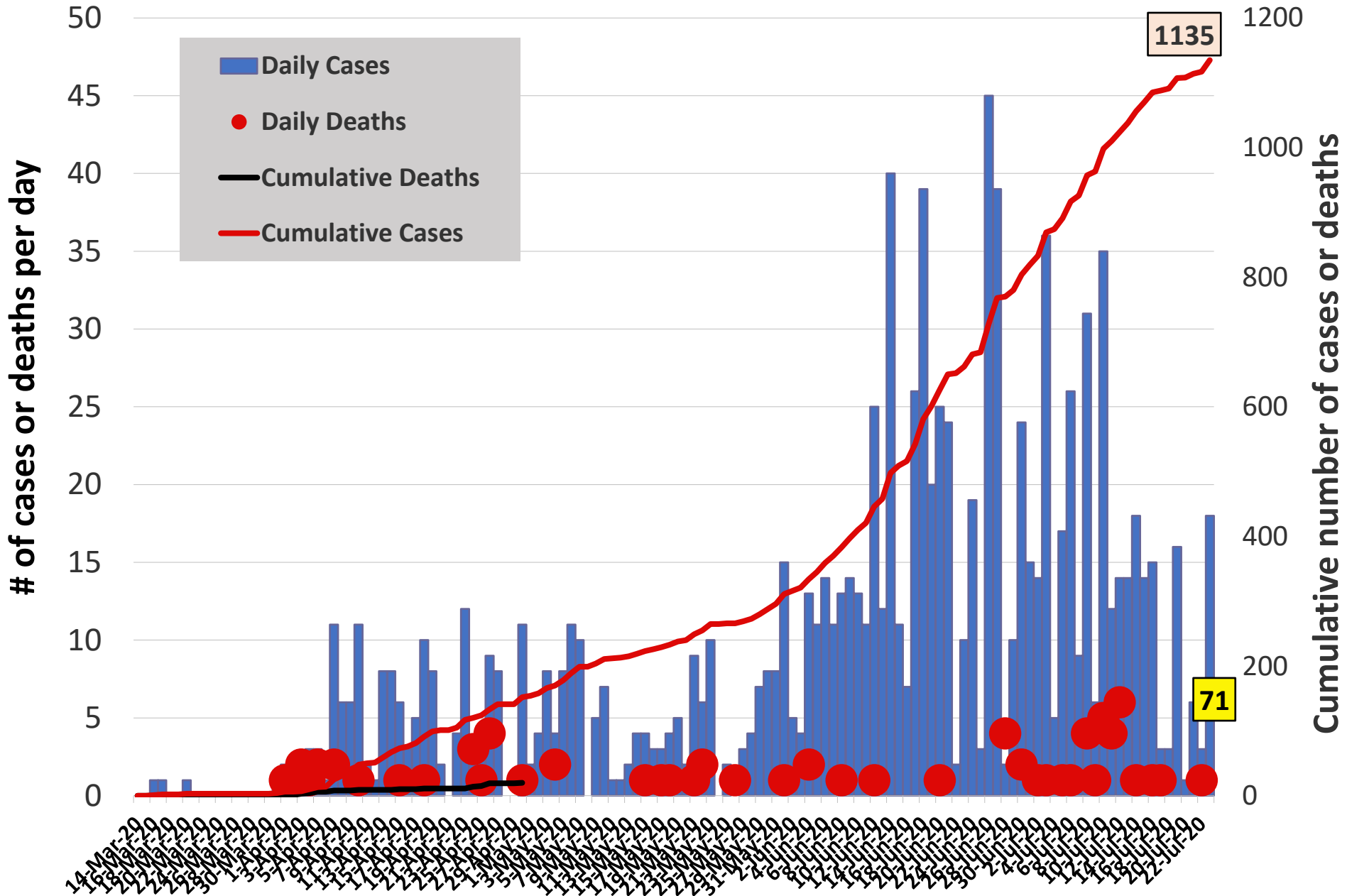
Cadre Cases and Deaths by Health Care Workers (16 March – 23 July 2020)

Health Care Worker Cadre	Monterrado		Margibi		Nimba		River Gee		Sinoe		Grand Kru		Gbarpolu		Bong		Lofa		Grand Bassa		Maryland		Bomi		National (Total)		
	Cases	Deaths	Cases	Deaths	Cases	Deaths	Cases	Deaths	Cases	Deaths	Cases	Deaths	Cases	Deaths	Cases	Deaths	Cases	Deaths	Cases	Deaths	Cases	Deaths	Cases	Deaths	Cases	Deaths	
Doctors	10	0	1	0	0	0	1	0	0	0	0	0	0	0	0	1	0	0	0	1	0	0	0	0	0	14	0
Pharmacists	2	0	0	0	0	0	0	0	0	0	0	0	0	0	0	0	0	0	0	0	0	0	0	0	0	2	0
Nurses	23	1	2	0	1	0	5	0	0	0	2	0	1	1	12	1	8	0	5	0	1	0	1	0	61	3	
Nurse Aid	0	0	0	0	2	0	0	0	0	0	4	0	0	0	0	0	0	2	0	2	0	0	0	0	10	0	
Midwife	0	0	0	0	0	0	1	0	0	0	0	0	0	0	1	0	1	0	0	0	0	0	0	0	3	0	
Radiologist	1	0	0	0	0	0	0	0	0	0	0	0	0	0	0	0	0	0	0	0	0	0	0	0	1	0	
Physician Assistants	6	0	1	0	1	0	1	0	0	0	0	0	0	0	0	1	0	1	0	0	0	0	0	0	11	0	
Lab Technician	6	0	1	0	2	0	0	0	1	0	1	0	0	0	0	2	0	0	0	10	0	0	0	0	23	0	
Environmental Health Technicians	5	0	0	0	0	0	0	0	0	0	0	0	0	0	0	0	0	0	0	0	0	0	0	0	5	0	
Microbiologist	1	0	0	0	0	0	0	0	0	0	0	0	0	0	0	0	0	0	0	0	0	0	0	0	1	0	
Epidemiologist	1	0	0	0	0	0	0	0	0	0	0	0	0	0	0	0	0	0	0	0	0	0	0	0	1	0	
Dieticians	0	0	7	1	0	0	0	0	0	0	0	0	0	0	0	0	0	0	0	0	0	0	0	0	7	1	
Dispenser	0	0	0	0	0	0	0	0	0	0	0	0	0	2	1	0	0	0	0	0	0	0	0	0	2	1	
Licensed Practical Nurse	0	0	0	0	0	0	0	0	0	0	0	0	0	1	1	0	0	0	0	0	0	0	0	0	1	1	
Psychosocial Worker	1	0	0	0	0	0	0	0	0	0	0	0	0	0	0	0	0	0	0	0	0	0	0	0	1	0	
Hygienist	0	0	0	0	0	0	0	0	0	0	0	0	0	1	0	0	0	0	0	0	0	0	0	0	1	0	
Logistician	0	0	0	0	0	0	0	0	0	0	0	0	0	0	0	0	0	1	0	0	0	0	0	0	1	0	
Vaccinator	0	0	0	0	1	0	0	0	0	0	0	0	0	0	0	0	0	0	0	0	0	0	1	0	2	0	
Ambulance Driver	2	0	0	0	0	0	0	0	0	0	0	0	0	0	0	2	0	0	0	0	0	0	0	0	4	0	
Procurement Officer	0	0	0	0	0	0	0	0	1	0	0	0	0	0	0	0	0	0	0	0	0	0	0	0	1	0	
Registrar/ Accountant	2	0	0	0	0	0	0	0	0	0	0	0	0	0	0	0	0	0	0	0	0	0	1	0	3	0	
CHT Secretary	0	0	0	0	0	0	1	0	0	0	0	0	0	0	0	0	0	0	0	0	0	0	0	0	1	0	
Hospital Administrator	0	0	0	0	0	0	1	0	0	0	0	0	0	0	0	0	0	0	0	0	0	0	0	0	1	0	
Hospital Cleaner	1	0	0	0	0	0	0	0	0	1	0	0	0	1	0	0	0	1	0	1	0	0	0	0	5	0	
CHT CHV/ CHSS	0	0	0	0	0	0	0	0	0	0	3	0	0	0	0	1	0	0	0	0	0	0	0	0	4	0	
GIS Specialist	1	0	0	0	0	0	0	0	0	0	0	0	0	0	0	0	0	0	0	0	0	0	0	0	1	0	
Others	7	0	0	0	0	0	0	0	0	0	0	0	0	0	0	0	0	0	0	0	0	0	0	0	7	0	
Total:	69	1	12	1	7	0	10	0	2	0	11	0	1	1	19	3	15	0	11	0	14	0	3	0	174	6	

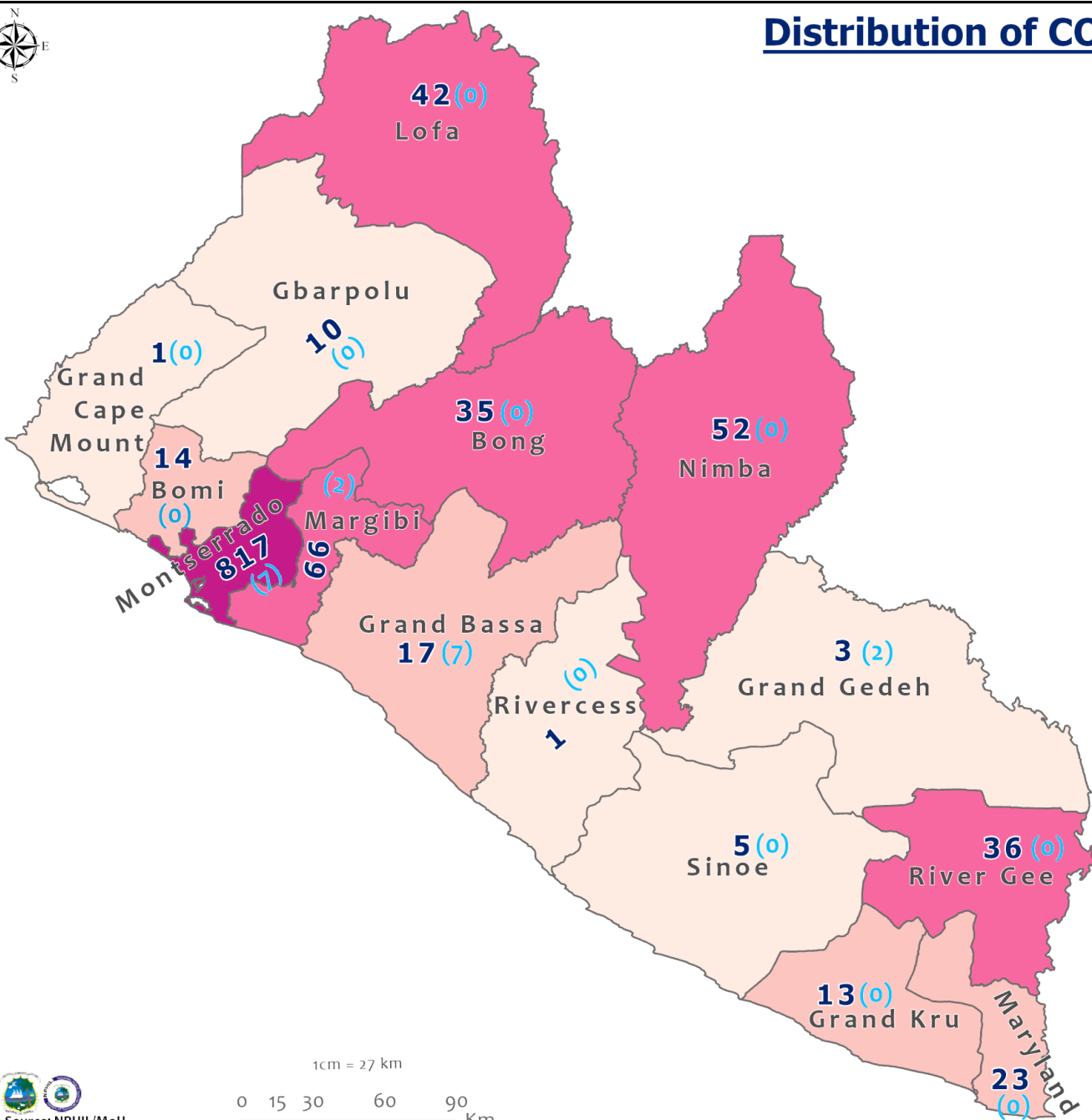
Suspected and High Risk Cases and Deaths (16 March – 23 July 2020)

County	New Suspected	Cumulative Suspected	New High Risk	Cumulative High Risk	New Suspected Deaths	Cumulative Suspected Deaths
Montserrat	22	6238	0	0	0	79
Margibi	0	9	0	44	0	1
Maryland	5	32	0	20	0	5
Bong	0	22	0	159	0	3
Rivercess	0	3	0	7	0	1
River Gee	0	39	0	46	0	0
Lofa	1	76	1	75	1	54
Grand Cape Mount	0	21	0	0	0	0
Bomi	0	9	0	81	0	0
Sinoe	0	46	0	54	0	7
Grand Gedeh	0	0	0	14	0	0
Grand Kru	0	0	0	88	0	0
Gbarpolu	0	91	0	13	0	0
Grand Bassa	0	43	0	32	0	0
Nimba	0	193	0	185	0	13
National	28	6822	1	818	1	163

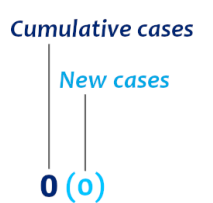
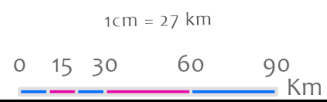
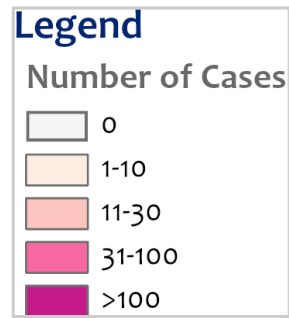
EPI-Curve of Confirmed Cases and Deaths



Distribution of COVID-19 Cases by County in Liberia - July 23, 2020



Total cumulative cases:
1135
 Total new cases:
18



COVID-19 Cases by District in Liberia - July 23, 2020



Total Cases: 1135

Affected Counties	Cumulative Cases
Montserrado	817
Margibi	66
Nimba	52
Lofa	42
River Gee	36
Bong	35
Maryland	23
Grand Bassa	17
Bomi	14
Grand Kru	13
Gbarpolu	10
Sinoe	5
Grand Gedeh	3
Rivercess	1
Grand Cape Mount	1

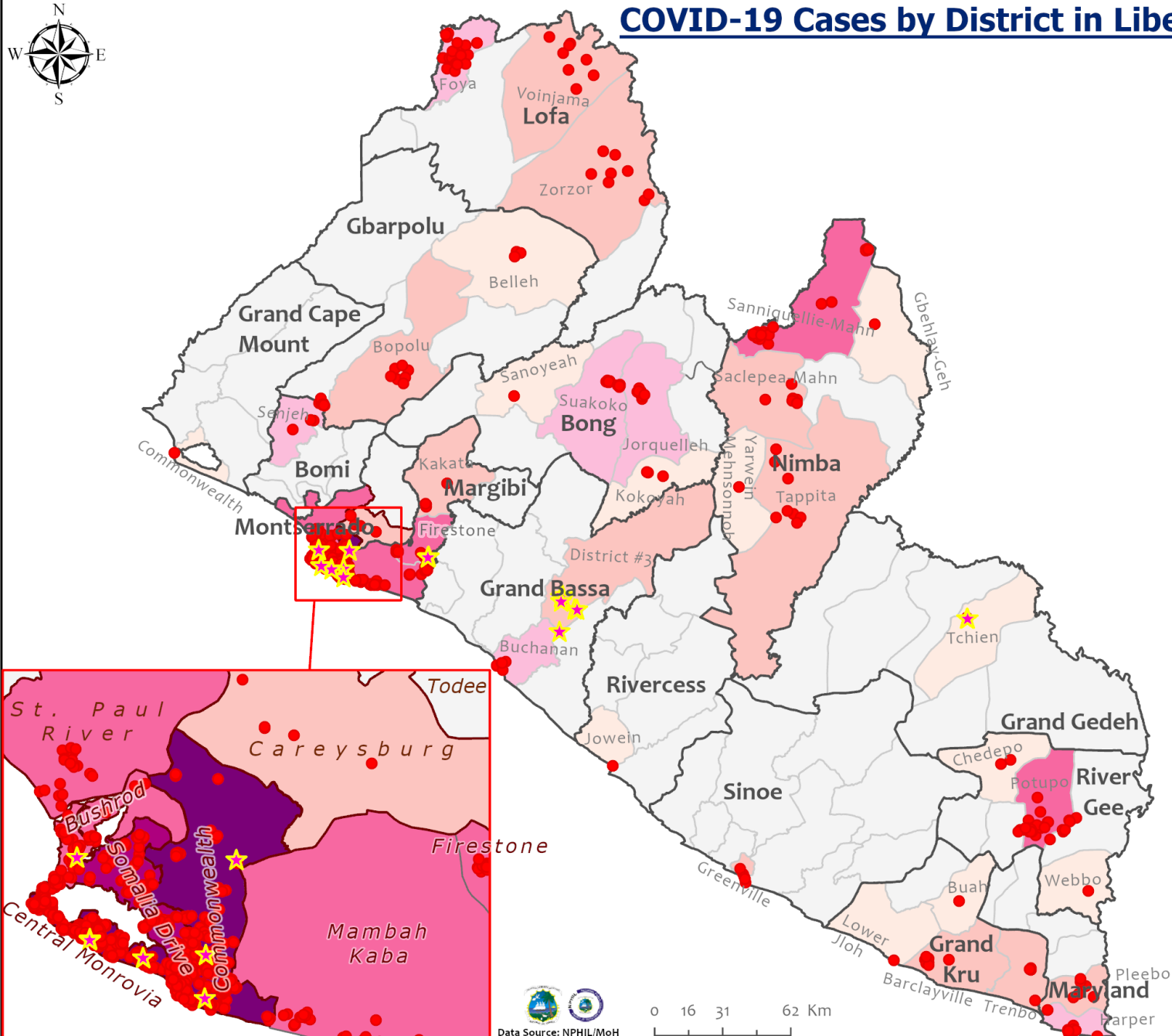
Legend

Case Status

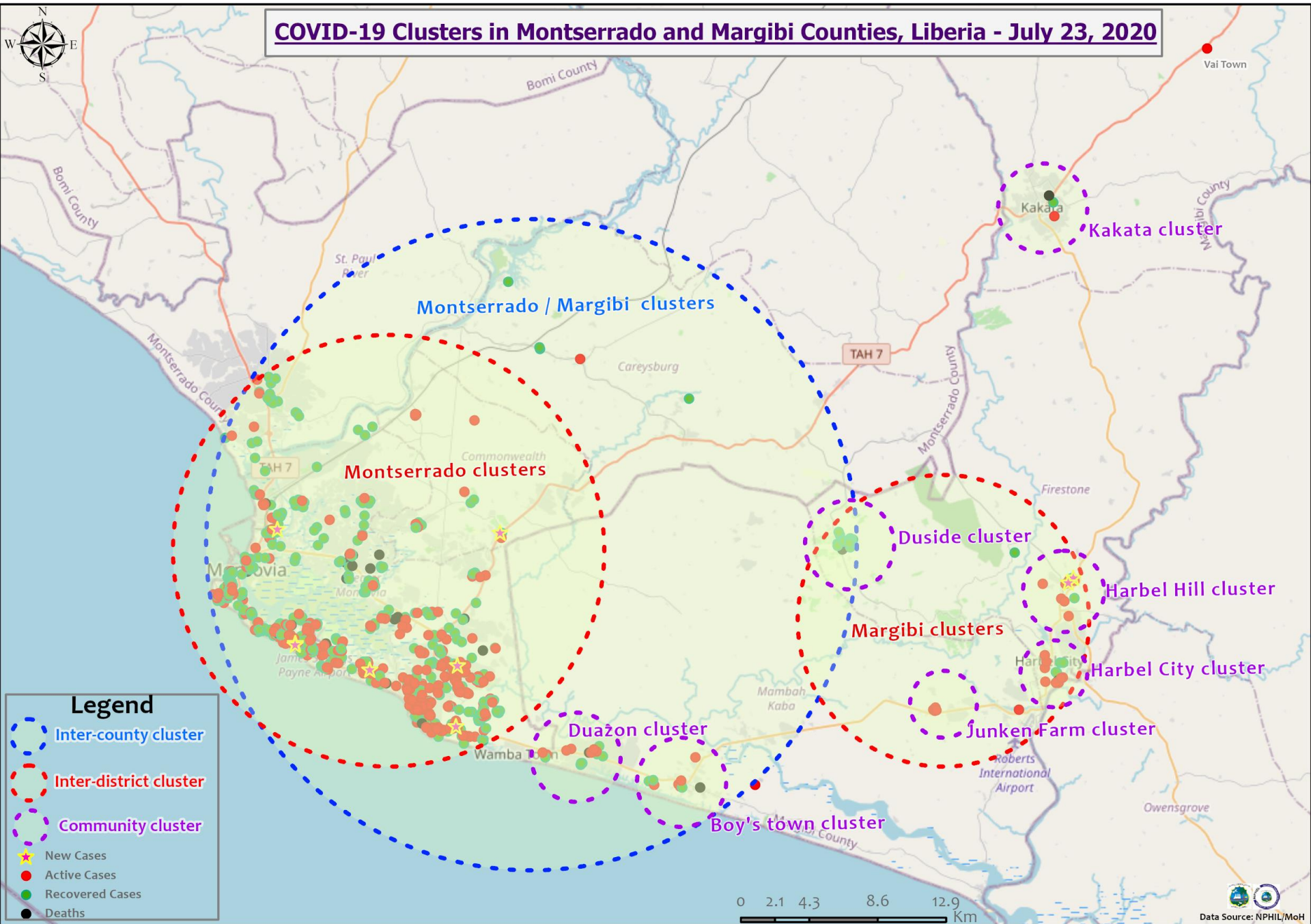
- ★ New confirmed cases
- Confirmed cases

Cases / District

- 0
- 1-3
- 4-10
- 11-20
- 21-69
- 70-86
- 87-361

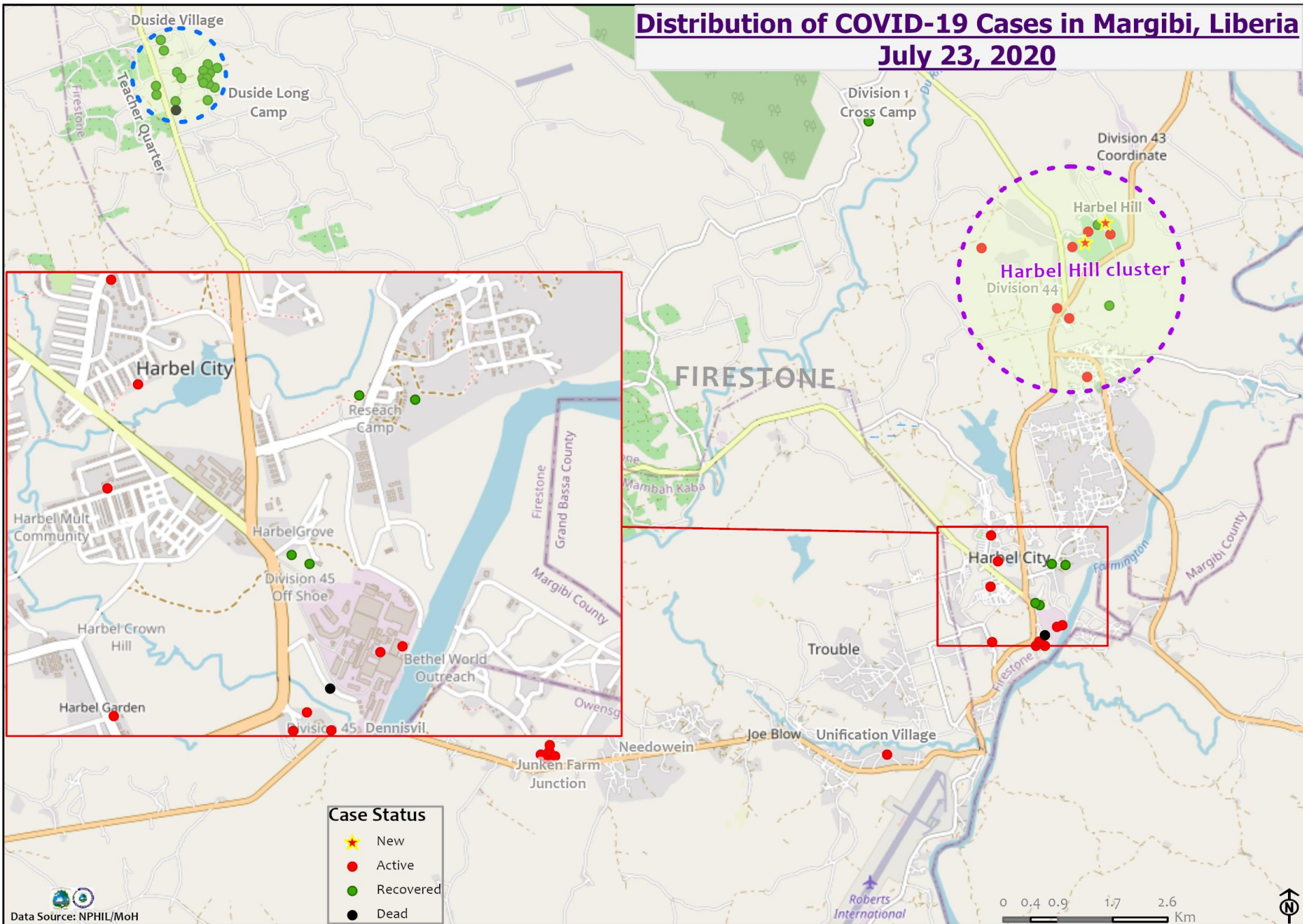


COVID-19 Clusters in Montserrado and Margibi Counties, Liberia - July 23, 2020



Distribution of COVID-19 Cases in Margibi, Liberia

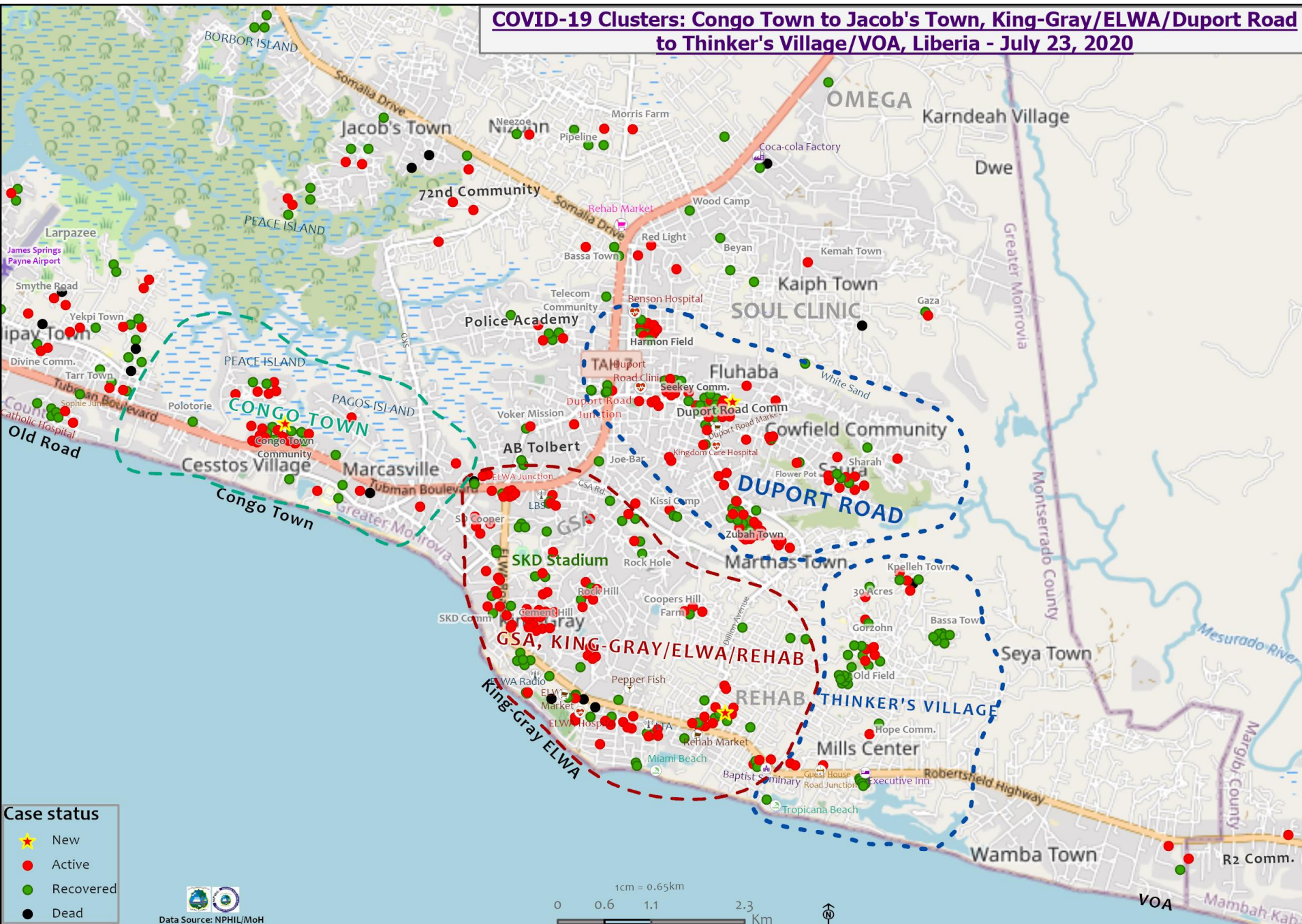
July 23, 2020



Case Status

★	New
●	Active
●	Recovered
●	Dead

COVID-19 Clusters: Congo Town to Jacob's Town, King-Gray/ELWA/Duport Road to Thinker's Village/VOA, Liberia - July 23, 2020



Case status

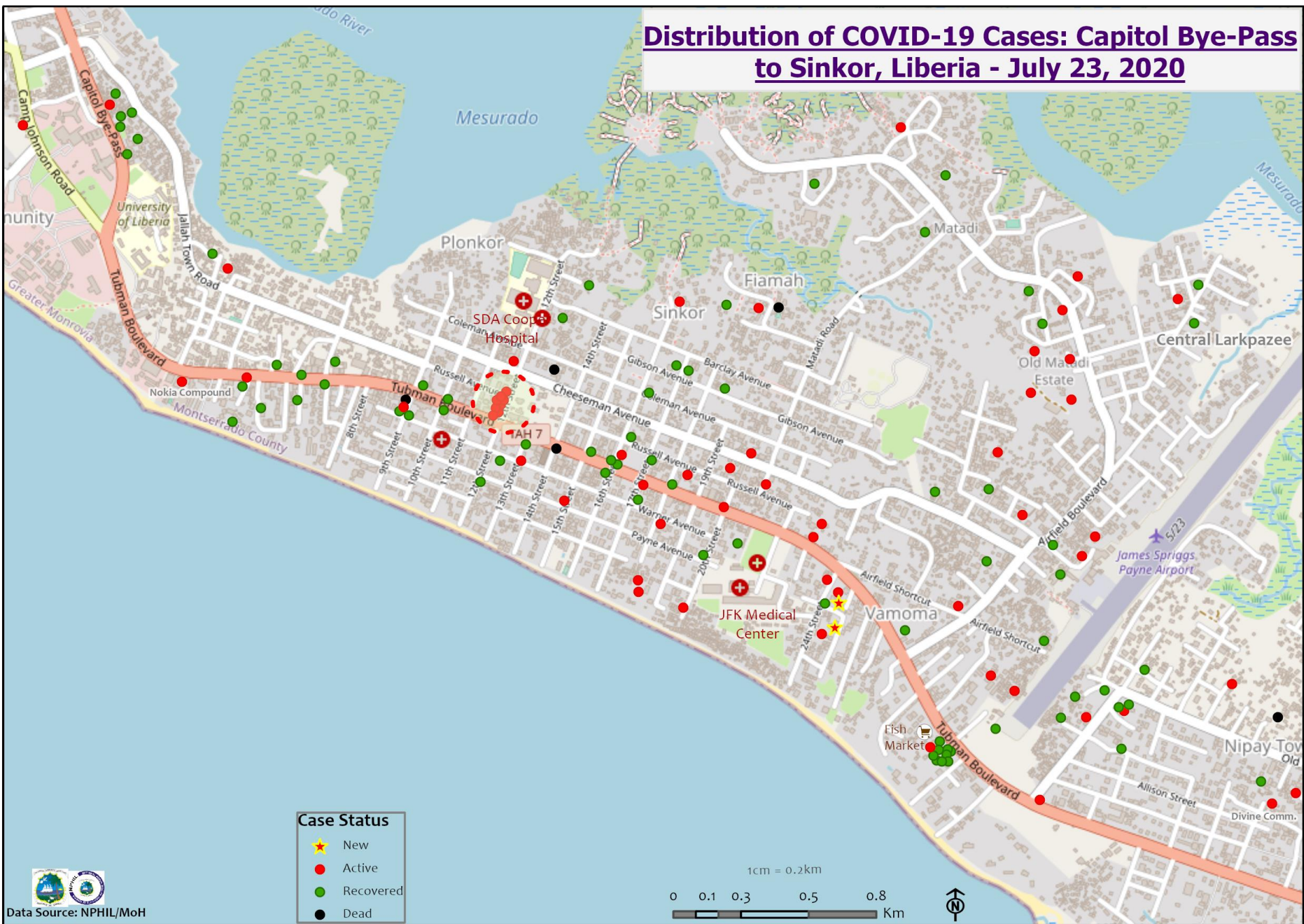
- ★ New
- Active
- Recovered
- Dead

Data Source: NPHIL/MoH

1cm = 0.65km
 0 0.6 1.1 2.3 Km

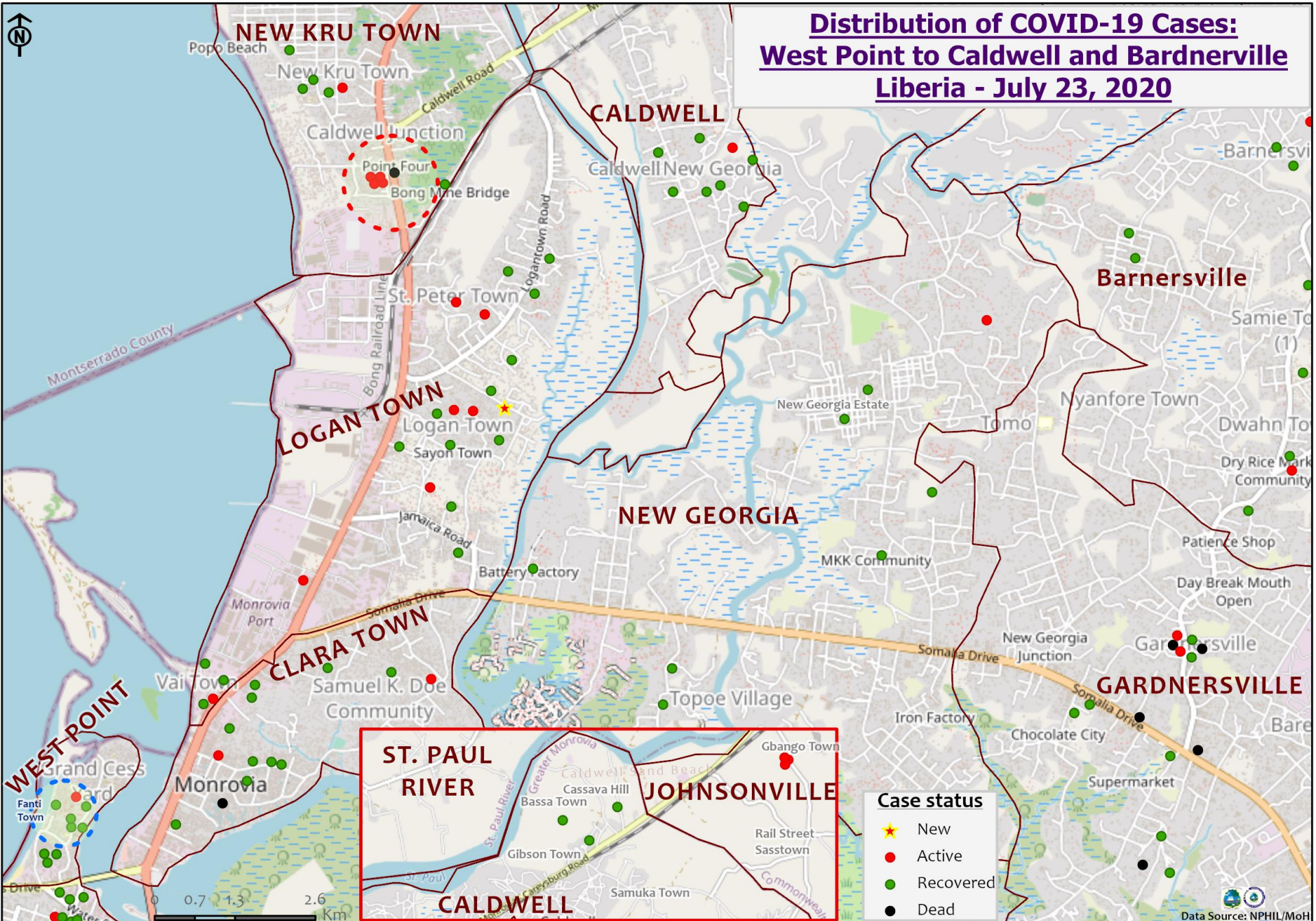


Distribution of COVID-19 Cases: Capitol Bye-Pass to Sinkor, Liberia - July 23, 2020

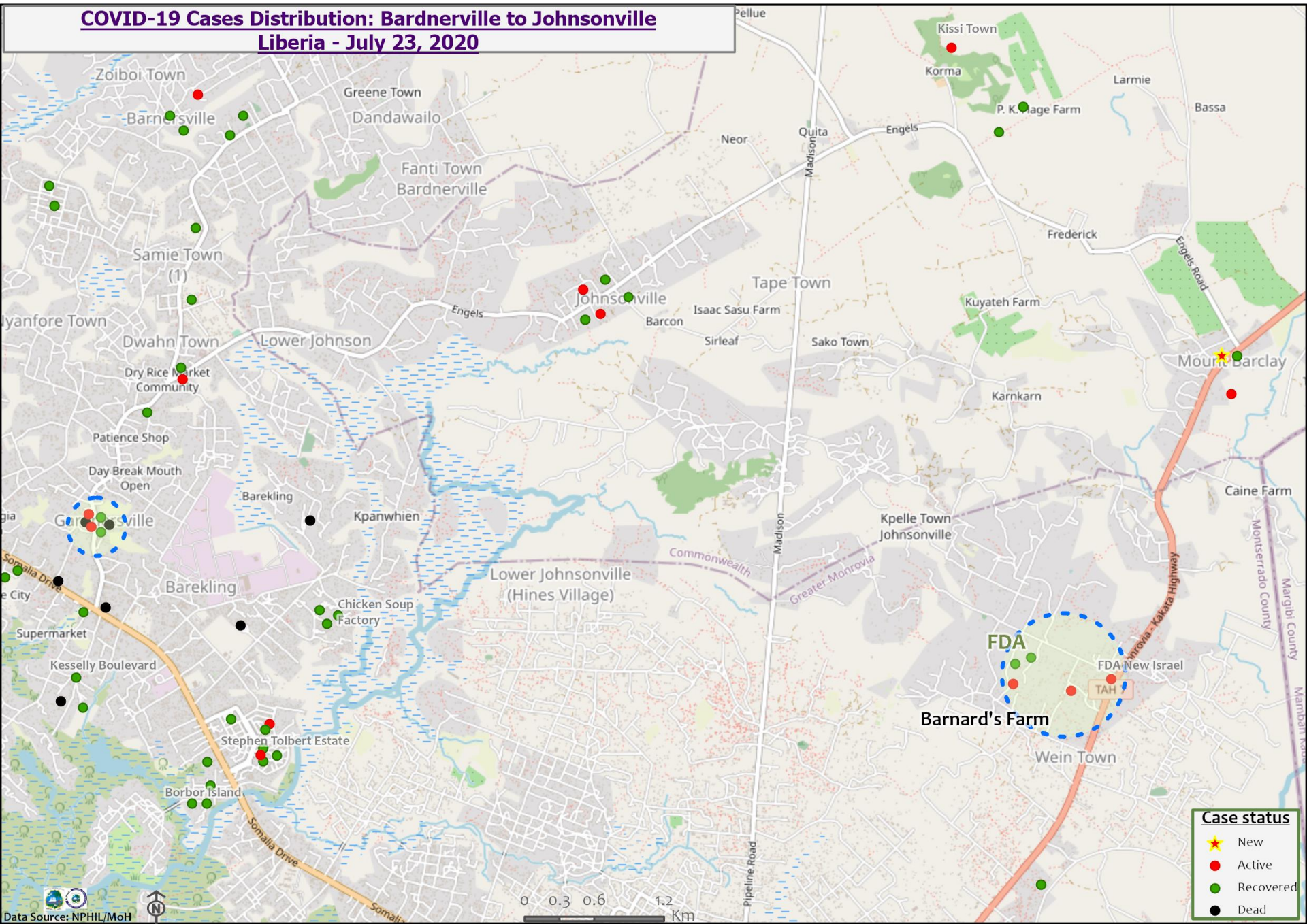


Data Source: NPHI/MoH

Distribution of COVID-19 Cases: West Point to Caldwell and Bardnerville Liberia - July 23, 2020



COVID-19 Cases Distribution: Bardnerville to Johnsonville Liberia - July 23, 2020



Case status

- ★ New
- Active
- Recovered
- Dead

Precautionary Observation Centers (POC): Admission and Discharges

County	Precautionary Observation Centers				Cumulative Move to Treatment
	New admissions	Currently in POC	Daily Discharges	Cumulative Discharges (not including transferred)	
Bomi	0	0	0	0	0
Gbarpolu	0	0	0	0	0
Grand Bassa	0	0	0	42	0
Grand Kru	0	29	0	0	0
Margibi	4	33	0	87	0
Maryland	5	9	0	2	0
Montserrado	0	11	2	89	19
Nimba	0	2	0	33	0
River Gee	0	10	0	8	0
Sinoe	0	0	2	181	0
Lofa	2	25	1	333	1
NATIONAL	11	119	5	775	20

Daily Summary Report at Treatment Units – July 23, 2020

Treatment Facility Name	New admissions	Daily Discharges	Cumulative Recoveries	Daily Deaths	Cumulative Deaths	*Currently in treatment	Number of Available beds
14 Military Hospital Treatment Unit	1	0	439	0	6	19	91
Union Treatment Center	1	0	42	0	0	23	30
Duside Hospital Treatment Unit	1	2	31	0	1	5	14
TMH Treatment Unit	0	0	11	0	0	2	16
Foya Treatment Unit	1	0	5	0	0	7	4
Zorzor Treatment Unit	0	0	3	0	0	1	3
Bong Treatment Unit	0	0	24	0	0	2	26
TOTAL	4	2	555	0	7	59	184

Demographic Breakdown of Cases in Treatment Units

Daily Report – July 23, 2020

Currently in the Treatment Unit													
Treatment Facility Name	Total Census	Total Adult	Total Children		Total Female	Total Male	Total Confirm	Others	Pregnant	Children			
										<1	1-5	6-10	11-17
14 Military Hospital Treatment Unit	19	19	0		5	14	19	0	0	0	0	0	0
Union Treatment Center	23	19	4		10	13	23	0	0	1	0	2	1
Duside Hospital Treatment Unit	5	4	1		0	5	5	0	0	0	0	0	1
TMH Treatment Unit	2	2	0		0	2	2	0	0	0	0	0	0
Foya Treatment Unit	7	5	2		3	4	7	0	0	0	0	1	1
Zorzor Treatment Unit	1	1	0		0	1	1	0	0	0	0	0	0
Bong Treatment Unit	2	2	0		2	0	0	0	0	0	0	0	0
TOTAL	59	52	7		20	39	57	0	0	1	0	3	3

Recoveries from Treatment Units (16 March – 23 July 2020)

COVID-19 Treatment Units				
Treatment Unit	New admissions	Cumulative admissions	Recoveries	Cumulative Recoveries
14 Military Hospital & Union Treatment Center, Montserrado	2	522	0	483
Chief Jallahlone Hospital, Gbarpolu	0	3	0	1
Jackson F. Doe Hospital, Nimba	0	5	0	1
E&J Medical Center, Nimba	0	15	4	12
Ganta Methodist Hospital, Nimba	0	1	0	1
AML Yekepa, Nimba	0	11	0	7
Pleebo Health Center, Maryland	0	12	0	10
JJ Dossen Hospital, Maryland	0	9	0	5
Rally Time Hospital, Grand Kru	0	3	0	1
Sasstown Health Center, Grand Kru	0	6	0	0
Behwan Health Center	0	3	0	0
Fish Town Hospital, River Gee	0	32	0	7
St. Timothy Hospital, Grand Cape Mount	0	1	0	0
Liberia Government Hospital, Bomi	0	12	0	7
Tellewoyan Hospital, Lofa	0	13	0	11
Foya Hospital, Lofa	1	12	0	5
Curran Hospital, Lofa	0	4	0	3
Phebe Hospital, Bong	0	26	0	24
Liberia Government Hospital, Grand Bassa	0	4	0	3
Arcelor Mittal, Grand Bassa	0	5	0	5
LAC Hospital, Grand Bassa	7	7	0	0
Duside Hospital, Margibi	1	37	0	31
F. J. Grant Hospital, Sinoe	0	4	0	4
Total	11	747	4	621

Admissions, Currently in Treatment, and Discharges

COVID-19 Treatment Units									
Treatment Unit	New admissions	Cumulative admissions	Discharges	Cumulative Discharges	Currently in Treatment Unit	Total Males	Total Females	0-35 yrs	36+ yrs
Liberia Government Hospital, Bomi	0	12	0	7	6	3	3	3	3
Chief Jallahlone Hospital, Gbarpolu	0	3	0	1	0	0	0	0	0
Arcelor Mittal, Grand Bassa	0	5	0	5	0	0	0	0	0
Liberia Government Hospital, Grand Bassa	0	3	0	3	0	0	0	0	0
LAC Hospital Grand Bassa	7	7	0	0	7	4	3	1	6
St. Timothy Hospital, Grand Cape Mount	0	1	0	0	1	1	0	0	1
Rally Time Hospital, Grand Kru	0	3	0	1	2	1	1	2	0
Sasstown Health Center, Grand Kru	0	7	0	0	7	3	4	2	5
Behwan Health Center, Grand Kru	0	3	0	0	3	0	3	1	2
Pleebo Health Center, Maryland	0	12	0	10	2	2	0	2	0
JJ Dossen Hospital, Maryland	0	9	0	5	4	1	3	2	2
Jackson F. Doe Hospital, Nimba	0	5	0	1	3	3	0	3	0
E&J Medical Center, Nimba	0	15	4	12	3	3	0	0	3
AML Yekepa, Nimba	0	11	0	7	4	2	2	4	0
Ganta Methodist Hospital, Nimba	0	1	0	1	0	0	0	0	0
Fish Town Hospital, River Gee	0	35	0	7	28	24	4	9	19
F. J. Grant Hospital, Sinoe	0	4	0	4	0	0	0	0	0
Total	7	136	4	64	70	47	23	29	41

Laboratory Samples Evaluated – July 23, 2020

Laboratory	Total	New Positive	Repeat Positive	Initial Negative	Repeat Test Negative	Pending Lab Result
NPHRL	184	18	10	103	29	24
Total	184	18	10	103	29	24

Summary of COVID-19 Contact Tracing in Response Counties

County	New Contacts Line listed	Cumulative Contacts	No. of Health Care Workers as Contacts	Cumulative no. of Health Care Workers as contacts	Contacts became a case	Cumulative contacts that became a case	Contacts Completed 14 Days	Cumulative Contacts Completing 14 Days	Contacts Under Follow-up	Contacts lost to Follow-up
Montserrado	17	4176	0	451	0	160	10	3712	390	3
Margibi	4	464	0	124	0	40	0	365	59	0
Grand Bassa	0	213	0	65	0	16	0	129	68	0
Sinoe	0	181	0	29	0	1	0	179	2	0
Gbarpolu	0	87	0	13	0	8	0	53	34	0
Lofa	0	738	0	92	1	32	1	497	225	0
Nimba	0	569	0	53	0	24	0	504	37	8
Bong	0	280	0	70	0	28	0	174	104	2
Grand CapeMount	0	21	0	0	0	0	0	0	0	0
RiverGee	0	123	0	13	0	30	0	75	48	0
Maryland	0	83	0	30	0	7	0	0	83	0
Bomi	0	102	0	10	0	13	0	0	70	0
Rivecess	0	22	0	15	0	0	0	0	22	0
Grand Kru	7	282	0	131	0	13	0	0	270	0
Grand Gedeh	3	23	0	0	0	0	0	0	12	11
National	31	7364	0	1096	1	372	11	5688	1424	24

Active Case Finding (16 March – 23 July 2020)

County	Visitation				Identification, Investigation & Testing								Supervision		
	No. of communities Assigned	No. of communities Visited	No. of Households Assigned	No. of Households Visited	Sick persons Identified	Cumulative Sick persons identified	Sick persons referred for Investigation	Cumulative Sick person referred for Investigation	Sick persons Investigated	Cumulative Sick persons Investigated	Sick persons investigated and referred for testing	Cumulative Sick persons investigated and referred for testing	No. of Sick persons followed-up today	No. of supervision visits	No. of Supervisory Calls
Bomi	127	19	625	625	0	0	0	0	0	0	0	0	0	2	0
Bong	333	248	48611	5570	0	265	0	265	0	265	0	2	7	0	0
Montserrado	250	0	0	94217	9	571	9	369	9	350	9	301	0	0	0
Margibi	15	15	15	132	0	4	0	4	0	16	0	10	7	8	7
Maryland	0	0	278	278	2	3	2	3	2	3	2	3	2	0	0
Grand Cape Mount	1	1	19	19	0	0	0	0	0	0	0	0	0	0	0
Grand Kru	100	50	2000	950	3	19	3	19	3	19	1	17	3	4	5
Sinoe	90	90	5232	2534	0	619	0	169	0	169	0	1	0	5	5
Rivercess	33	33	495	495	0	0	0	0	0	0	0	0	0	0	0
River Gee	100	80	50	20	0	24	0	24	0	24	0	24	37	6	0
Gbarpolu	54	54	1,270	409	0	221	0	221	0	221	0	25	39	0	0
Grand Bassa	19	19	345	3	14	326	14	326	14	326	0	0	0	0	0
Nimba	430	381	2460	1639	0	54	0	54	0	54	0	36	3	0	0
Lofa	321	321	592	592	1	76	1	76	1	76	1	76	0	44	219
National	1840	1259	61152	106988	29	1856	29	1204	29	1523	13	493	98	69	236

Thank you for Listening