



Liberia COVID-19 Daily Sitrep 134 (27th July 2020)

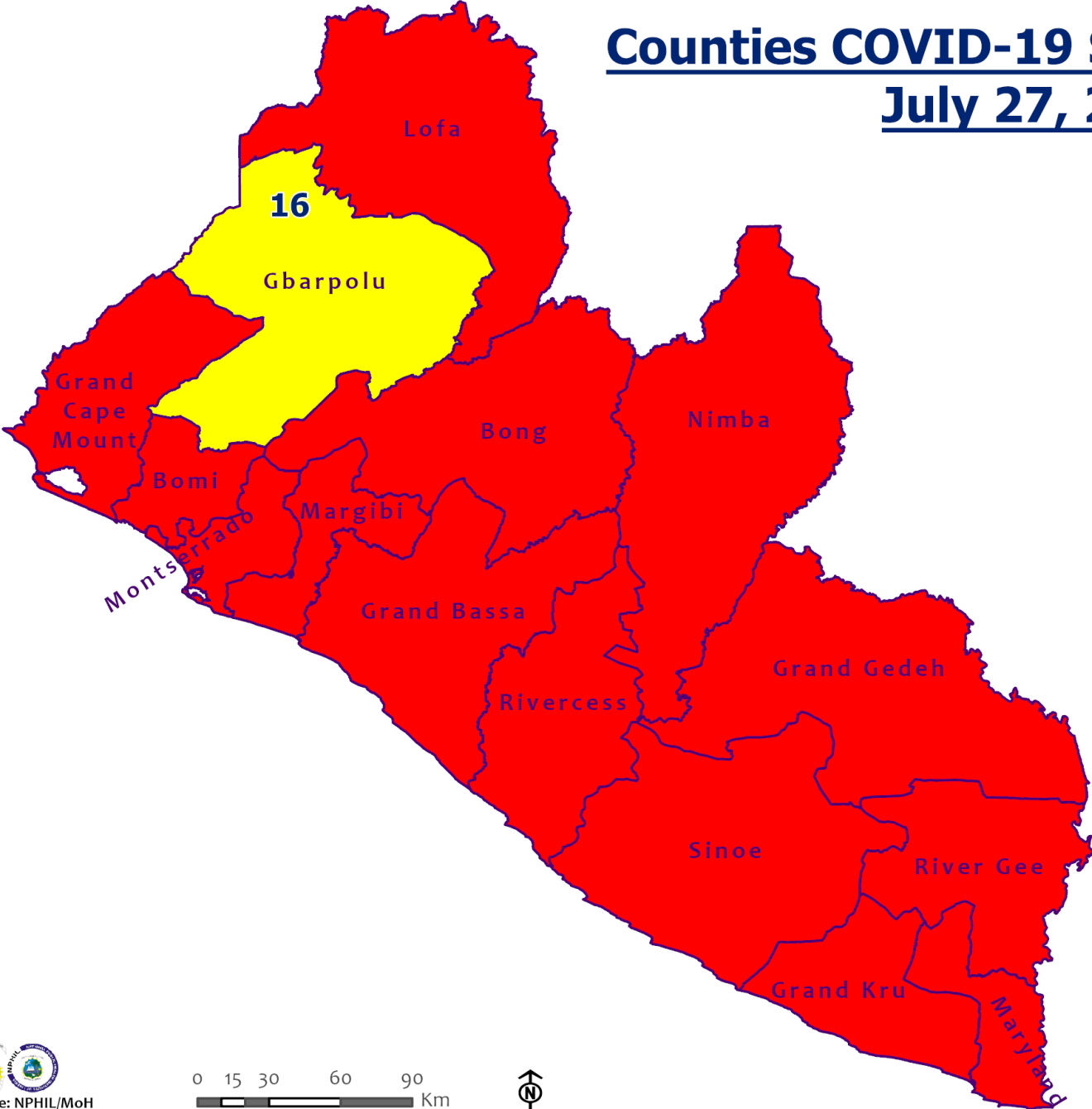
Summary of COVID-19 Cases by Reporting County, Liberia, 16 March – 27 July 2020

County			Confirmed Cumulative Cases
	Laboratory Confirmed Cases	Confirmed Cases on Contact List	
Bomi	0	0	14
Bong	0	0	35
Gbarpolu	0	0	10
Grand Bassa	4	4	27
Grand Cape Mount	0	0	1
Grand Kru	0	0	13
Grand Gedeh	1	1	4
Lofa	0	0	42
Margibi	0	0	66
Maryland	0	0	23
Montserrado	4	1	842
Nimba	1	0	54
Rivercess	0	0	4
River Gee	0	0	36
Sinoe	0	0	6
NATIONAL	10	6	1177

Demographic Breakdown (Gender & Age) of Confirmed COVID-19 Cases (16 March – 27 July 2020)

County	<15 years		15 - 34		35 - 54		55+		All ages		Total Confirmed
	M	F	M	F	M	F	M	F	M	F	
Bomi	2	2	1	2	4	2	0	1	7	7	14
Bong	3	1	1	5	8	7	7	3	19	16	35
Gbarpolu	1	2	0	2	3	1	1	0	5	5	10
Grand Bassa	3	0	4	7	3	7	2	1	12	15	27
Grand Cape Mount	0	0	0	0	0	0	1	0	1	0	1
Grand Kru	0	0	2	4	2	4	1	0	5	8	13
Grand Gedeh	0	0	0	1	3	0	0	0	3	1	4
Lofa	2	3	8	3	13	5	7	1	30	12	42
Margibi	6	3	13	9	16	6	7	6	42	24	66
Maryland	1	0	8	4	5	2	1	2	15	8	23
Montserrado	36	35	211	111	224	97	87	41	558	284	842
Nimba	0	2	13	6	24	3	3	3	40	14	54
Rivercess	0	0	2	2	0	0	0	0	2	2	4
River Gee	0	0	4	3	19	5	5	0	28	8	36
Sinoe	0	0	1	0	4	1	0	0	5	1	6
National	54	48	268	159	328	140	122	58	772	405	1177

Counties COVID-19 Status in Liberia July 27, 2020



Legend

County Status

- Preparedness
- 28-Day Countdown
- Response



0 15 30 60 90 Km



Demographic Breakdown (Gender & Age) of Confirmed COVID-19 Deaths (16 March – 27 July 2020)

County	<15 years		15 - 34		35 - 54		55+		All ages		Total Confirmed
	M	F	M	F	M	F	M	F	M	F	
Bong	0	0	1	0	0	0	3	1	4	1	5
Gbarpolu	0	0	0	0	1	0	1	0	2	0	2
Grand Bassa	0	0	0	0	0	0	0	0	0	0	0
Grand Kru	0	0	0	0	0	0	0	0	0	0	0
Lofa	0	0	1	0	1	1	6	1	8	2	10
Margibi	0	0	0	1	1	1	0	2	1	4	5
Maryland	0	0	0	0	0	0	1	1	1	1	2
Montserrado	0	0	1	0	7	7	15	7	23	14	37
Nimba	0	0	2	0	3	1	3	0	8	1	9
Rivercess	0	0	0	1	0	0	0	0	0	1	1
River Gee	0	0	0	0	0	0	0	0	0	0	0
Sinoe	0	0	1	0	0	0	0	0	1	0	1
National	0	0	6	2	13	10	29	12	48	24	72

Summary of COVID-19 Deaths by Reporting County, Liberia, 16 March – 27 July 2020

County	DAILY REPORT								Cumulative Deaths
	New Suspected Deaths	Laboratory Confirmed Deaths						Confirmed Deaths on Contact List	
		COVID-19 Treatment Unit	Total in COVID-19 Treatment Unit	Health Facility	Total in Health Facility	Community	Total in Community		
Bong	0	0	0	0	4	0	1	0	5
Gbarpolu	0	0	0	0	1	0	0	0	1
Grand Bassa	0	0	0	0	0	0	0	0	0
Grand Kru	0	0	0	0	0	0	0	0	0
Lofa	0	0	0	0	5	0	5	0	10
Maryland	0	0	0	0	2	0	0	0	2
Margibi	0	0	0	0	5	0	0	0	5
Montserrado	0	0	7	0	16	0	15	0	38
Nimba	0	0	1	0	4	0	4	0	9
Rivercess	0	0	0	0	1	0	0	0	1
River Gee	0	0	0	0	0	0	0	0	0
Sinoe	0	0	0	0	1	0	0	0	1
National	0	0	8	0	39	0	25	0	72

The Liberia Case Fatality rate (CFR) officially considered is for deaths that occurred among patients in care at the COVID-19 treatment units across the country. As of 26 July 2020, a total of 8 deaths have been recorded CFR=0.67%. The country is however keeping active surveillance on community deaths and deaths in non COVID-19 treatment health units.

Daily and Cumulative Healthcare Worker (HCW) COVID-19 Cases and Deaths by County, Liberia, 16 March – 27 July 2020

County	DAILY REPORT						CUMULATIVE CASES (ALIVE & DEAD)	
	New Suspected & High Risk Cases (Alive)			New Suspect Death	Laboratory Confirmed Cases	Confirmed Cases on Contact List	Confirmed	Deaths
	Suspect	High Risk	Total					
Bomi	0	0	0	0	0	0	3	0
Bong	0	0	0	0	0	0	19	3
Gbarpolu	0	0	0	0	0	0	1	1
Grand Bassa	0	0	0	0	0	0	17	0
Grand Kru	0	0	0	0	0	0	11	0
Lofa	0	0	0	0	0	0	15	0
Margibi	0	0	0	0	0	0	12	1
Maryland	0	0	0	0	0	0	14	0
Montserrado	0	0	0	0	0	0	70	1
Nimba	0	0	0	0	0	0	7	0
Rivercess	0	0	0	0	0	0	3	0
River Gee	0	0	0	0	0	0	9	0
Sinoe	0	0	0	0	0	0	3	0
NATIONAL	0	0	0	0	0	0	184	6

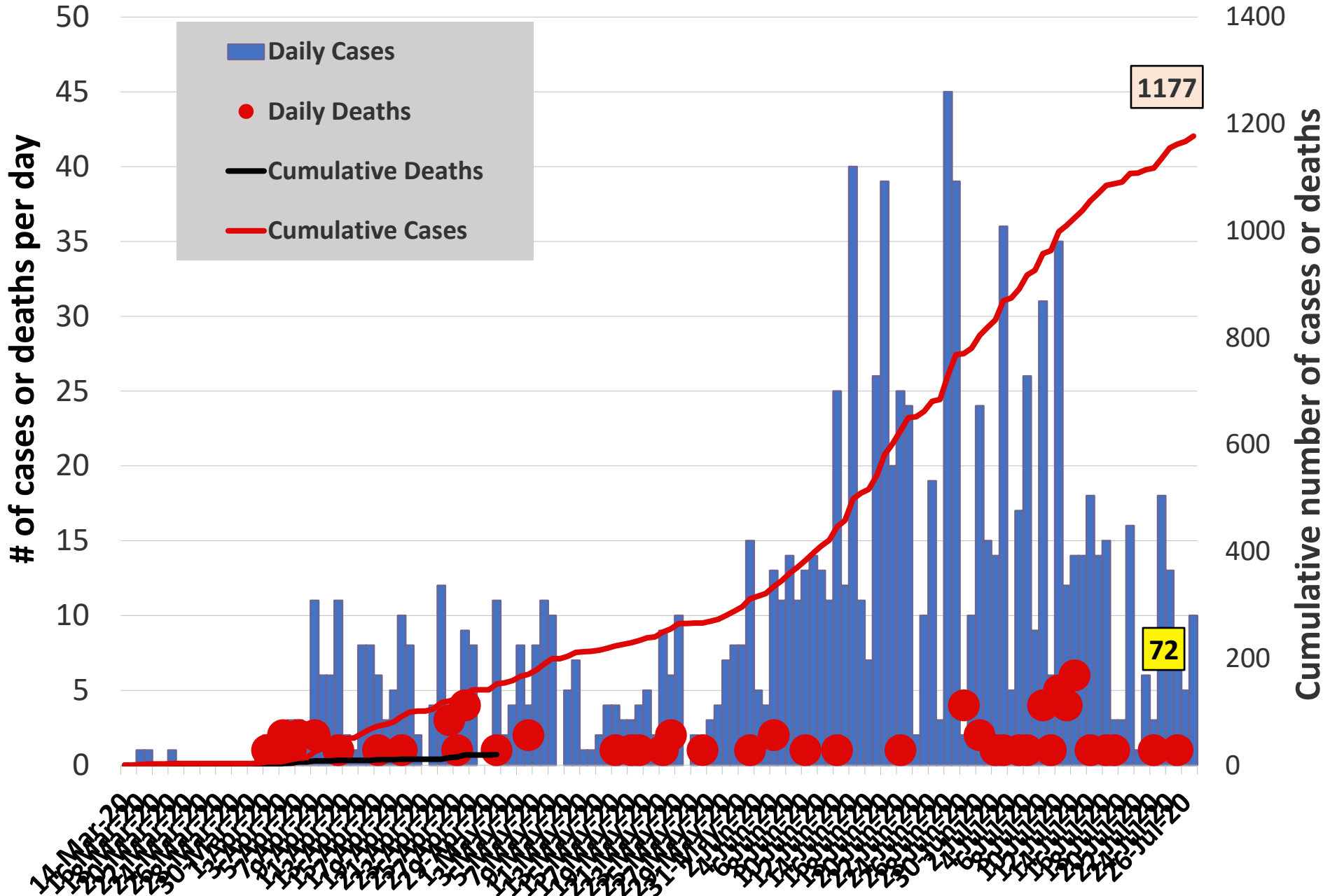
Cadre Cases and Deaths by Health Care Workers (16 March – 27 July 2020)

Health Care Worker Cadre	Montserratado		Margibi		Nimba		River Gee		Shioe		Grand Kru		Gbarpolu		Bong		Lofa		Grand Bassa		Maryland		Boni		Rivercess		National (Total)	
	Cases	Deaths	Cases	Deaths	Cases	Deaths	Cases	Deaths	Cases	Deaths	Cases	Deaths	Cases	Deaths	Cases	Deaths	Cases	Deaths	Cases	Deaths	Cases	Deaths	Cases	Deaths	Cases	Deaths	Cases	Deaths
Doctors	10	0	1	0	0	0	1	0	0	0	0	0	0	0	1	0	0	0	1	0	0	0	0	0	0	0	14	0
Pharmacists	2	0	0	0	0	0	0	0	0	0	0	0	0	0	0	0	0	0	0	0	0	0	0	0	0	0	2	0
Nurses	23	1	2	0	1	0	5	0	0	0	2	0	1	1	12	1	8	0	6	0	1	0	1	0	0	0	62	3
Nurse Aid	0	0	0	0	2	0	0	0	0	0	4	0	0	0	0	0	0	0	6	0	2	0	0	0	0	0	14	0
Midwife	0	0	0	0	0	0	1	0	0	0	0	0	0	0	1	0	1	0	0	0	0	0	0	0	0	0	3	0
Radiologist	1	0	0	0	0	0	0	0	0	0	0	0	0	0	0	0	0	0	0	0	0	0	0	0	0	0	1	0
Physician Assistants	6	0	1	0	1	0	1	0	0	0	0	0	0	0	0	0	1	0	1	0	0	0	0	0	0	0	11	0
Lab Technician	6	0	1	0	2	0	0	0	1	0	1	0	0	0	0	0	2	0	0	0	10	0	0	0	3	0	26	0
Environmental Health Technicians	5	0	0	0	0	0	0	0	0	0	0	0	0	0	0	0	0	0	0	0	0	0	0	0	0	0	5	0
Microbiologist	1	0	0	0	0	0	0	0	0	0	0	0	0	0	0	0	0	0	0	0	0	0	0	0	0	0	1	0
Epidemiologist	1	0	0	0	0	0	0	0	0	0	0	0	0	0	0	0	0	0	0	0	0	0	0	0	0	0	1	0
Dieticians	0	0	7	1	0	0	0	0	0	0	0	0	0	0	0	0	0	0	1	0	0	0	0	0	0	0	8	1
Dispenser	0	0	0	0	0	0	0	0	0	0	0	0	0	0	2	1	0	0	0	0	0	0	0	0	0	0	2	1
Licensed Practical Nurse	0	0	0	0	0	0	0	0	0	0	0	0	0	0	1	1	0	0	0	0	0	0	0	0	0	0	1	1
Psychosocial Worker	1	0	0	0	0	0	0	0	0	0	0	0	0	0	0	0	0	0	0	0	0	0	0	0	0	0	1	0
Hygienist	0	0	0	0	0	0	0	0	0	0	0	0	0	0	1	0	0	0	0	0	0	0	0	0	0	0	1	0
Logistician	0	0	0	0	0	0	0	0	0	0	0	0	0	0	0	0	0	0	1	0	0	0	0	0	0	0	1	0
Vaccinator	0	0	0	0	1	0	0	0	0	0	0	0	0	0	0	0	0	0	0	0	0	0	1	0	0	0	2	0
Ambulance Driver	2	0	0	0	0	0	0	0	0	0	0	0	0	0	0	0	2	0	0	0	0	0	0	0	0	0	4	0
Procurement Officer	0	0	0	0	0	0	0	0	1	0	0	0	0	0	0	0	0	0	0	0	0	0	0	0	0	0	1	0
Registrar/ Accountant	2	0	0	0	0	0	0	0	0	0	0	0	0	0	0	0	0	0	0	0	0	0	1	0	0	0	3	0
CHT Secretary	0	0	0	0	0	0	1	0	0	0	0	0	0	0	0	0	0	0	0	0	0	0	0	0	0	0	1	0
Hospital Administrator	0	0	0	0	0	0	1	0	0	0	0	0	0	0	0	0	0	0	0	0	0	0	0	0	0	0	1	0
Hospital Cleaner	1	0	0	0	0	0	0	0	0	0	1	0	0	0	1	0	0	0	1	0	1	0	0	0	0	0	5	0
CHT CHV/ CHSS	0	0	0	0	0	0	0	0	0	0	3	0	0	0	0	0	1	0	0	0	0	0	0	0	0	0	4	0
GIS Specialist	1	0	0	0	0	0	0	0	0	0	0	0	0	0	0	0	0	0	0	0	0	0	0	0	0	0	1	0
Others	8	0	0	0	0	0	0	0	0	0	0	0	0	0	0	0	0	0	0	0	0	0	0	0	0	0	8	0
Total:	70	1	12	1	7	0	10	0	2	0	11	0	1	1	19	3	15	0	17	0	14	0	3	0	3	0	184	6

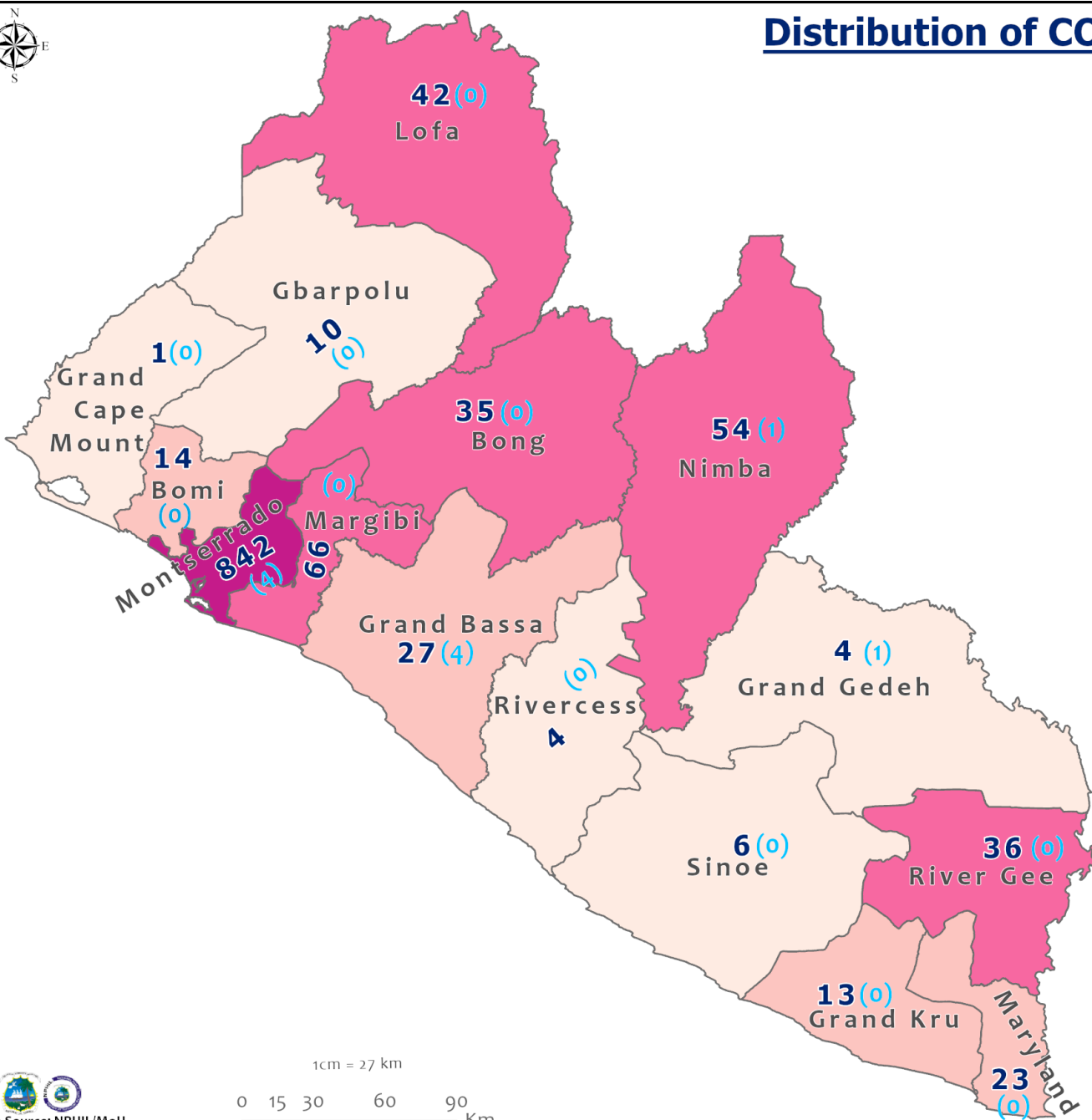
Suspected and High Risk Cases and Deaths (16 March – 27 July 2020)

County	New Suspected	Cumulative Suspected	New High Risk	Cumulative High Risk	New Suspected Deaths	Cumulative Suspected Deaths
Montserrat	0	6320	0	0	0	85
Margibi	0	10	0	44	0	1
Maryland	0	38	0	20	1	7
Bong	2	24	0	170	0	4
Rivercess	0	3		7	0	1
River Gee	0	39	0	46	0	0
Lofa	0	78	0	77	0	56
Grand Cape Mount	0	21	0	0	0	0
Bomi	0	9	0	81	0	0
Sinoe	0	46	0	59	0	7
Grand Gedeh	0	0	0	14	0	0
Grand Kru	0	0	0	88	0	0
Gbarpolu	0	91	0	13	0	0
Grand Bassa	0	43	0	32	0	0
Nimba	1	194	0	188	1	14
National	3	6916	0	839	2	175

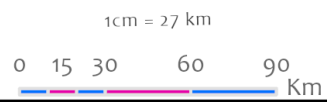
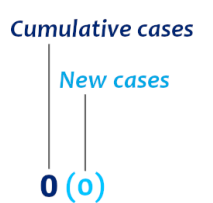
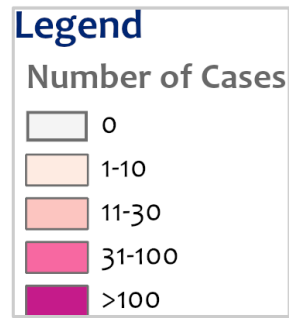
EPI-Curve of Confirmed Cases and Deaths



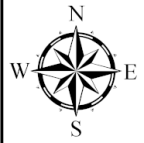
Distribution of COVID-19 Cases by County in Liberia - July 27, 2020



Total cumulative cases:
1177
 Total new cases:
10



COVID-19 Cases by District in Liberia - July 27, 2020



Total Cases: 1177

Affected Counties	Cumulative Cases
Montserrado	842
Margibi	66
Nimba	54
Lofa	42
River Gee	36
Bong	35
Grand Bassa	27
Maryland	23
Bomi	14
Grand Kru	13
Gbarpolu	10
Sinoe	6
Rivercess	4
Grand Gedeh	4
Grand Cape Mount	1

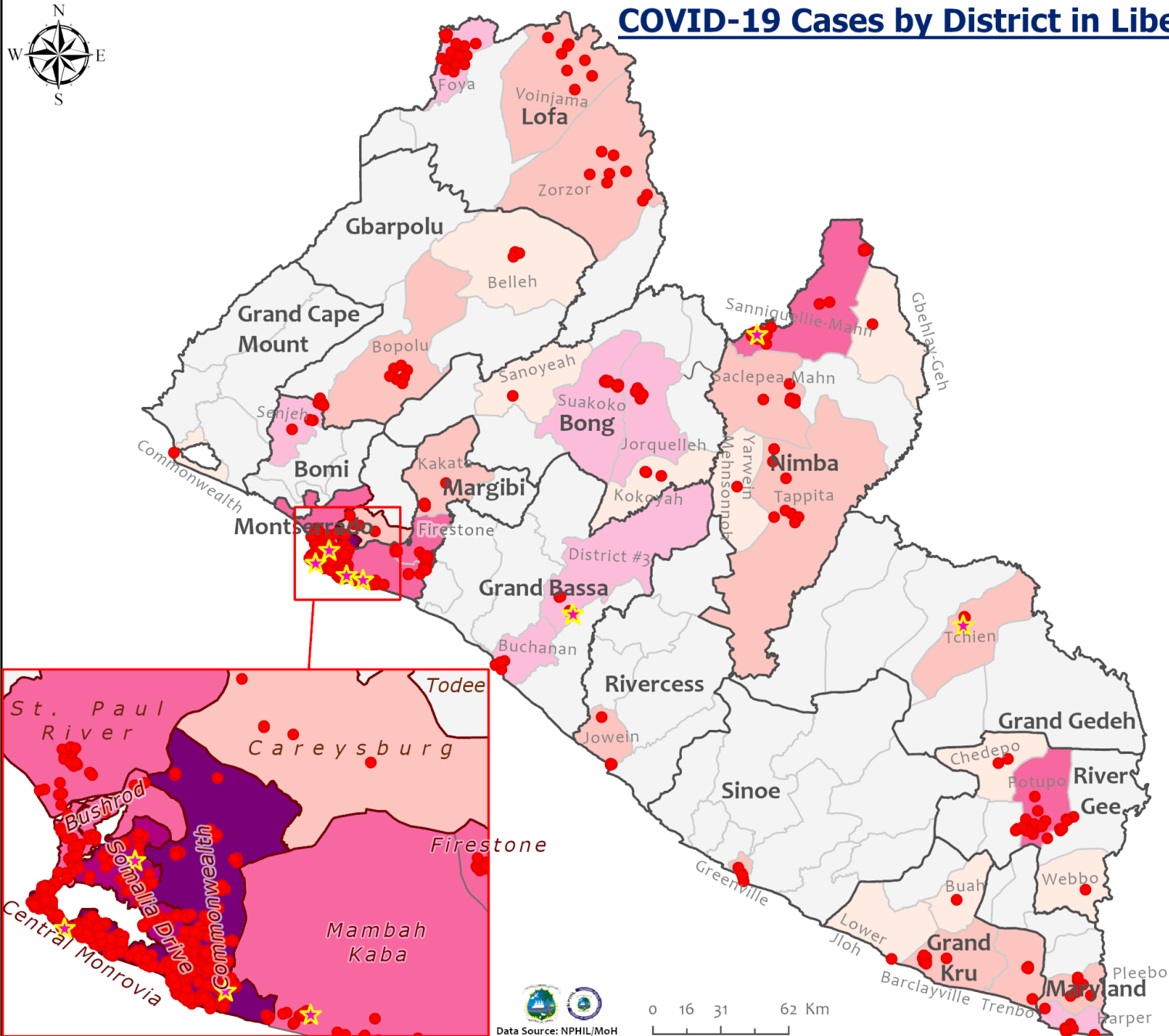
Legend

Case Status

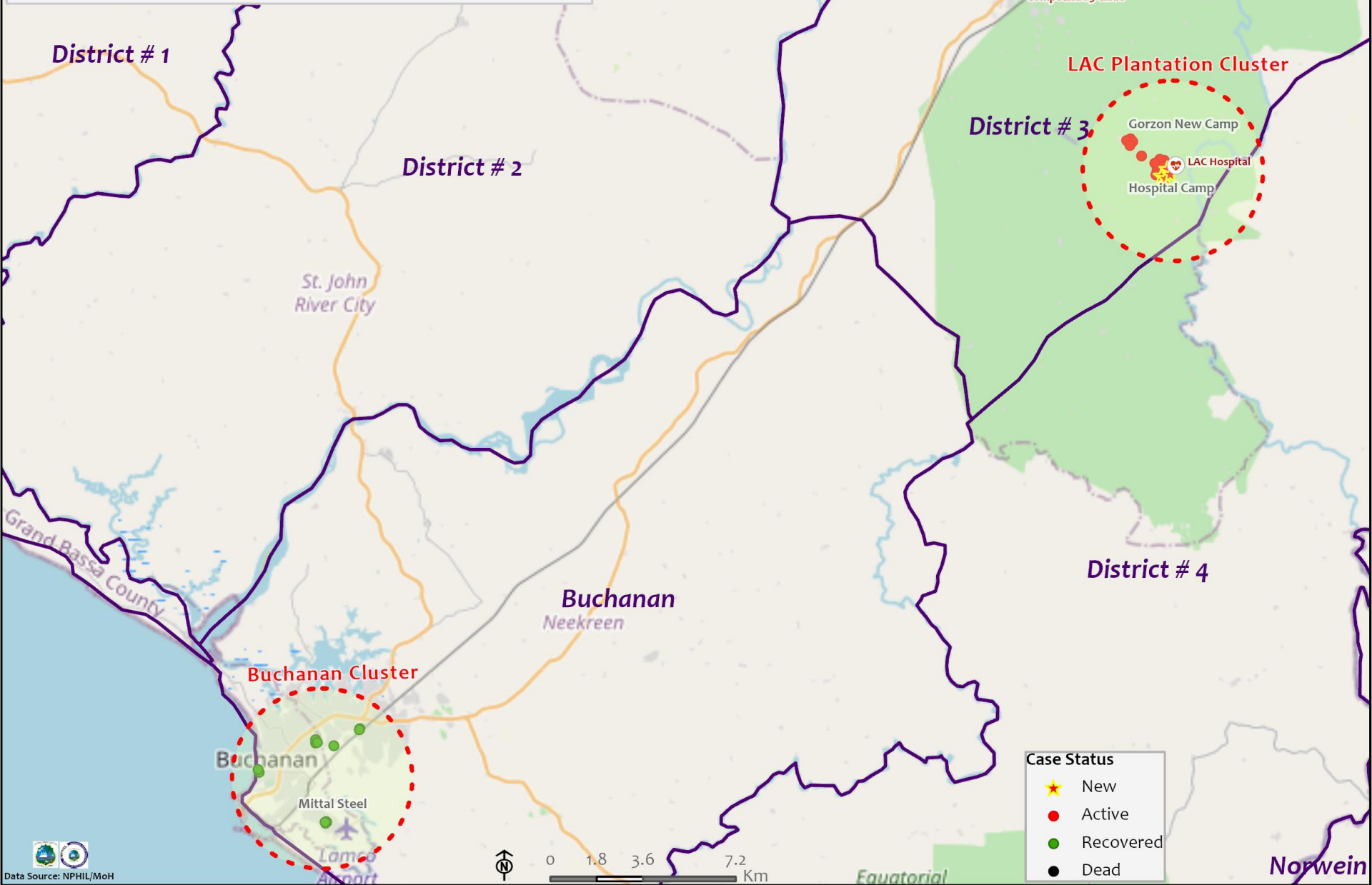
- ★ New confirmed cases
- Confirmed cases

Cases / District

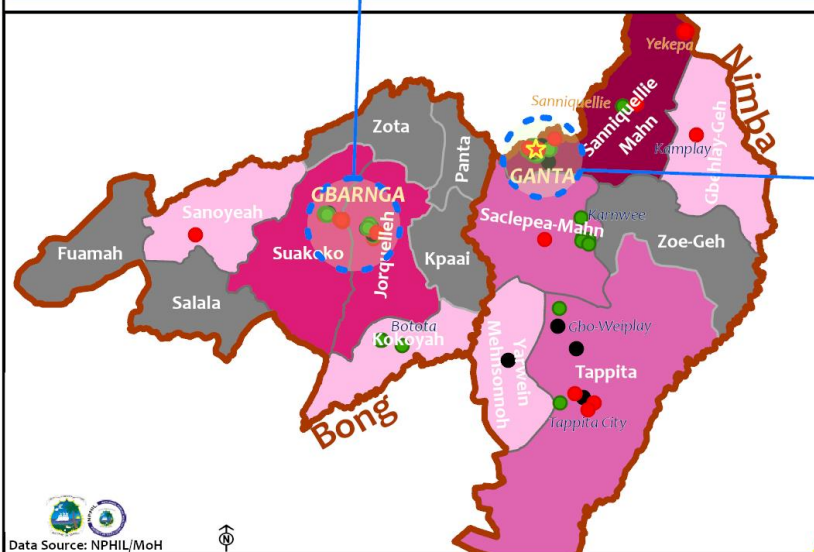
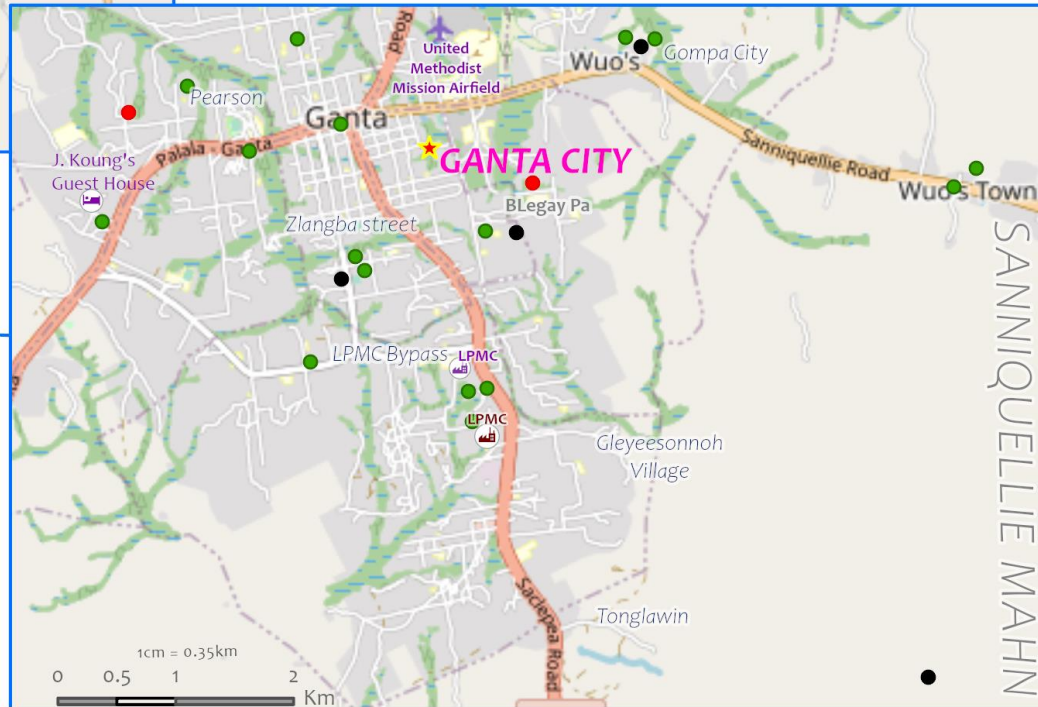
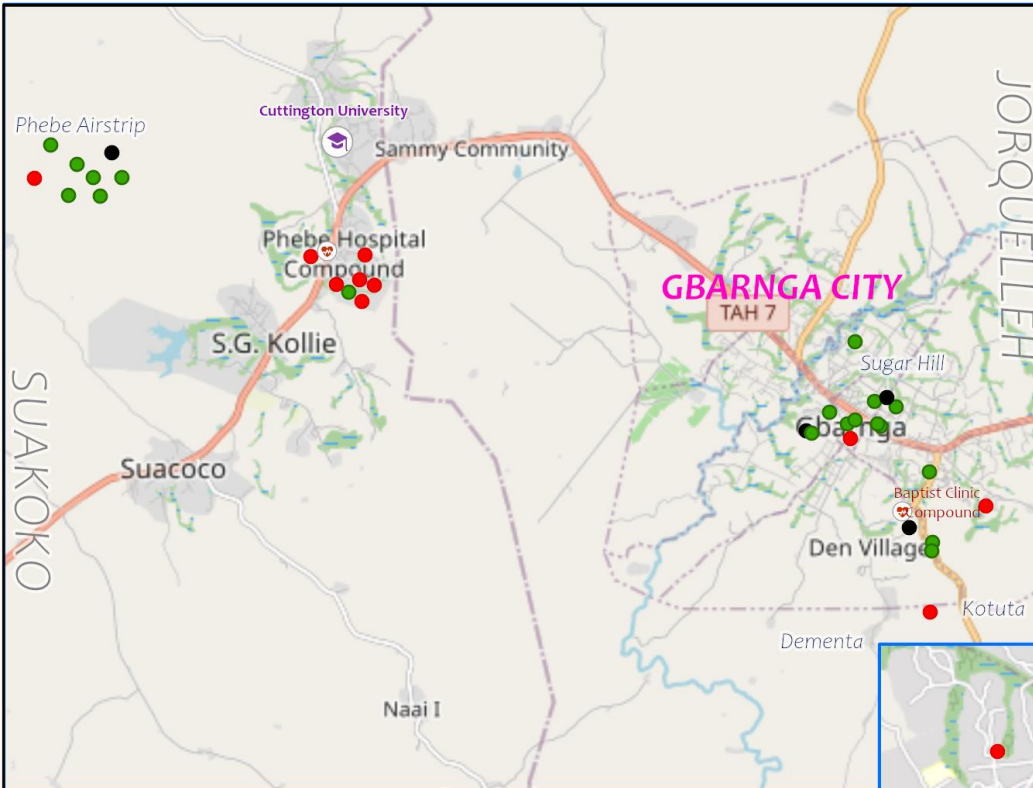
- 0
- 1-3
- 4-10
- 11-20
- 21-69
- 70-88
- 89-367



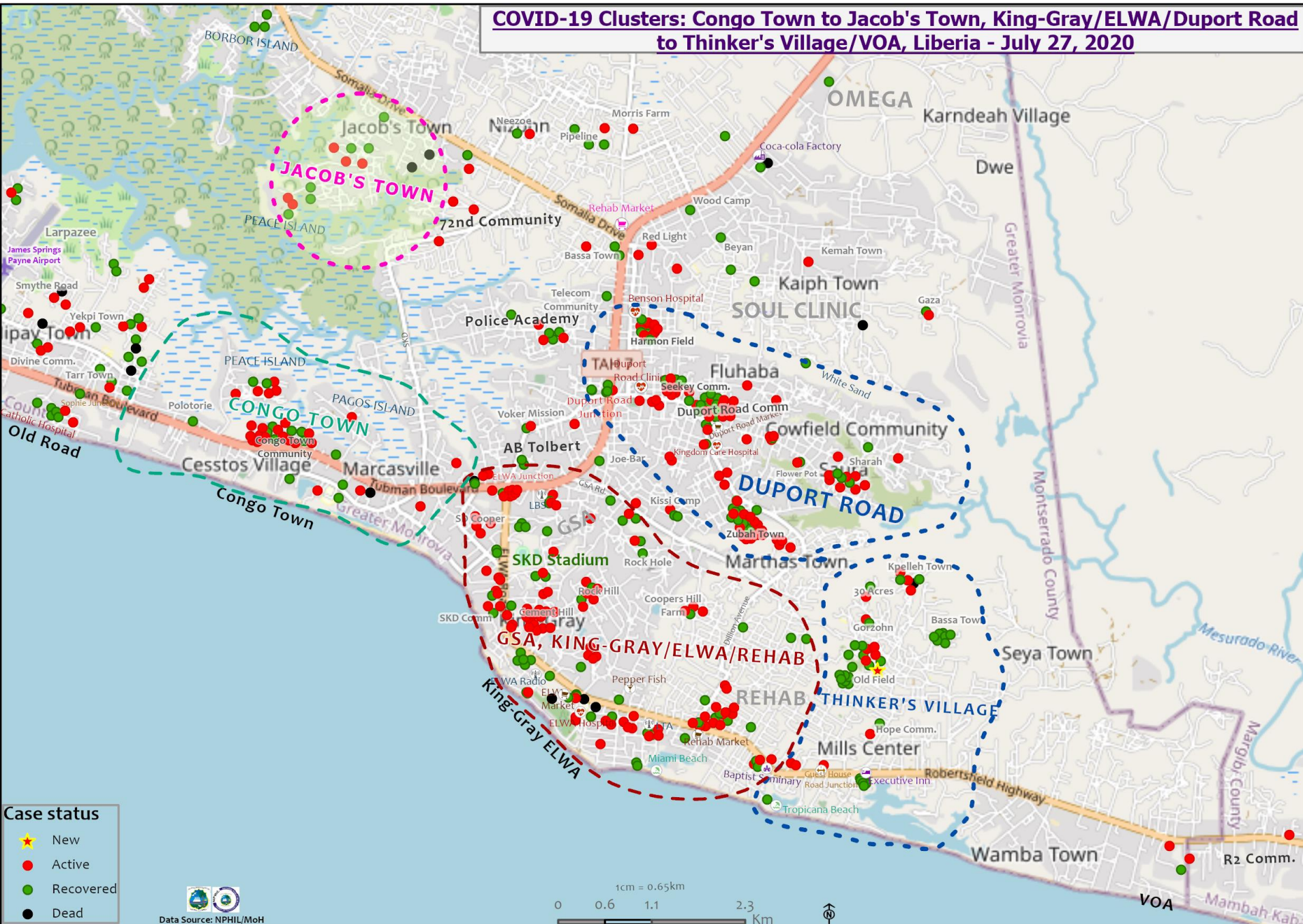
Distribution of COVID-19 Cases in Grand Bassa, Liberia - July 27, 2020



Distribution of COVID-19 Cases in Bong and Nimba counties, Liberia - July 27, 2020



COVID-19 Clusters: Congo Town to Jacob's Town, King-Gray/ELWA/Duport Road to Thinker's Village/VOA, Liberia - July 27, 2020



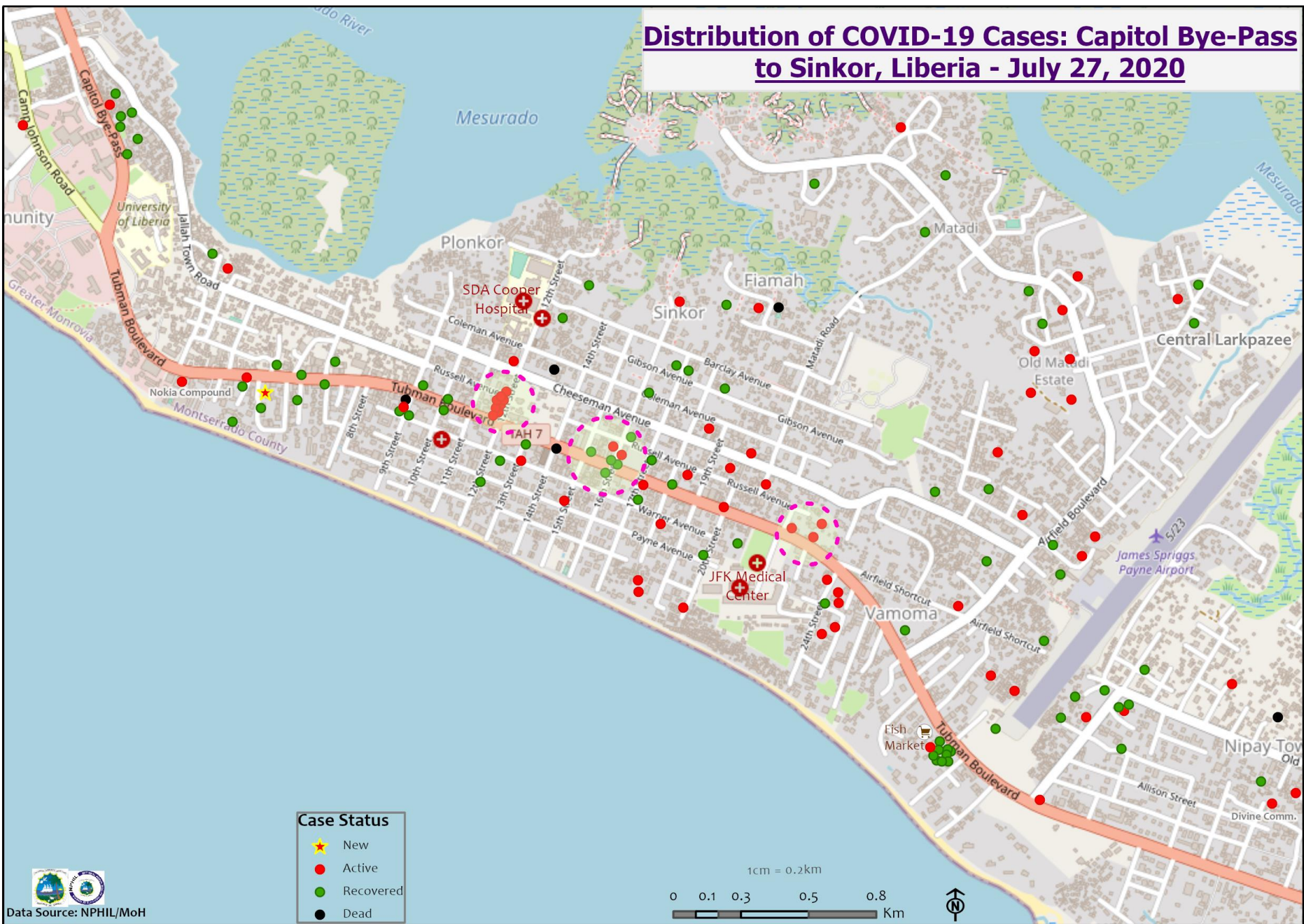
Case status

- ★ New
- Active
- Recovered
- Dead

Data Source: NPHIL/MoH

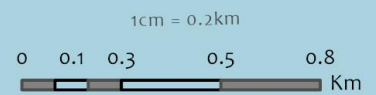
1cm = 0.65km
 0 0.6 1.1 2.3 Km

Distribution of COVID-19 Cases: Capitol Bye-Pass to Sinkor, Liberia - July 27, 2020



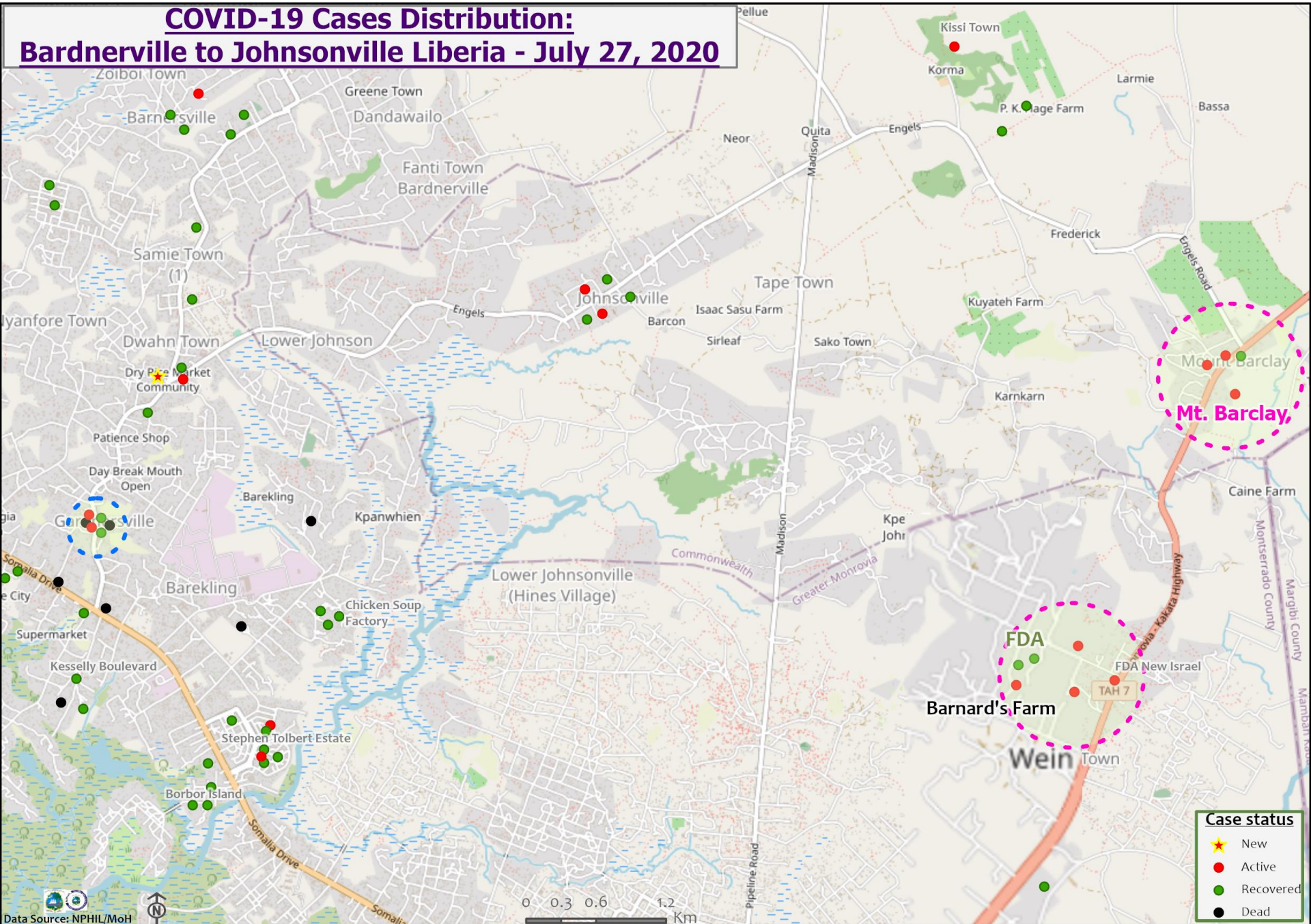
Case Status

- ★ New
- Active
- Recovered
- Dead



Data Source: NPHIL/MoH

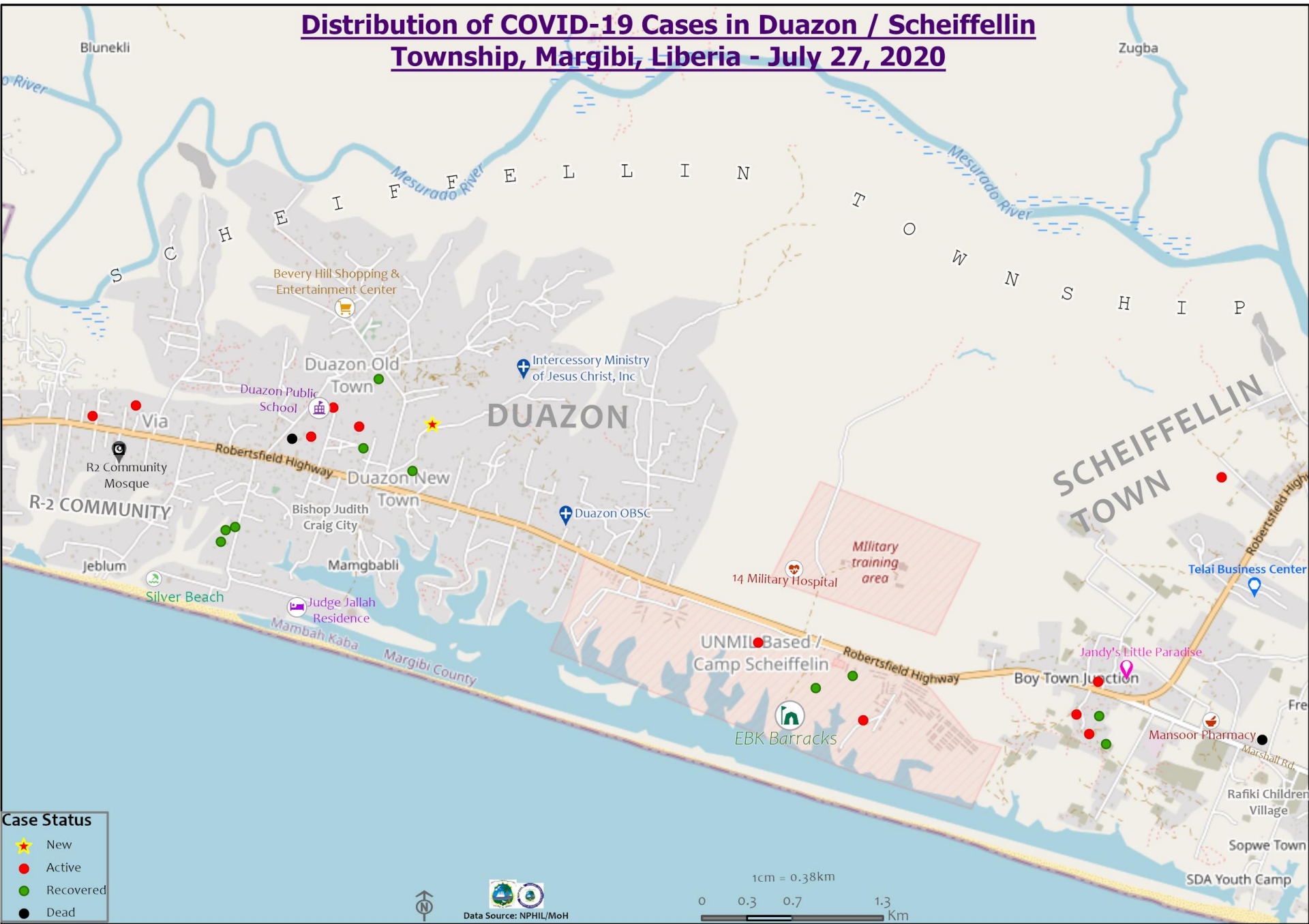
COVID-19 Cases Distribution: Bardnerville to Johnsonville Liberia - July 27, 2020



Case status

- ★ New
- Active
- Recovered
- Dead

Distribution of COVID-19 Cases in Duazon / Scheiffellin Township, Margibi, Liberia - July 27, 2020



Precautionary Observation Centers (POC): Admission and Discharges

County	Precautionary Observation Centers				Cumulative Move to Treatment
	New admissions	Currently in POC	Daily Discharges	Cumulative Discharges (not including transferred)	
Bomi	0	0	0	0	0
Gbarpolu	0	0	0	0	0
Grand Bassa	0	0	0	42	0
Grand Kru	0	29	0	0	0
Margibi	0	33	0	87	0
Maryland	0	9	0	2	0
Montserrado	0	11	0	89	0
Nimba	0	2	0	33	0
River Gee	0	10	0	8	0
Sinoe	1	10	0	190	0
Lofa	0	4	0	359	0
NATIONAL	1	108	0	810	0

Daily Summary Report at Treatment Units – July 27, 2020

Treatment Facility Name	New admissions	Daily Discharges	Cumulative Recoveries	Daily	Cumulative Deaths	Currently in treatment	Number of Available beds
Bomi Treatment Unit	0	0	7	0	0	7	10
Bong Treatment Unit	0	0	24	0	0	2	26
Chief Jallahlone Hospital Treatment Unit	0	0	1	0	0	0	4
Arcelor Mittal Treatment Unit	0	0	5	0	0	0	4
LGH Treatment Unit	0	0	3	0	0	0	3
LAC Treatment Unit	0	0	0	0	0	13	18
14 Military Hospital Treatment Unit	0	0	448	0	7	16	94
Union Treatment Center	0	0	51	0	0	15	38
Duside Hospital Treatment Unit	0	0	33	0	1	5	14
Martha Tubman Hospital Treatment Unit	1	0	0	0	0	3	8
Rally Time Treatment Unit	0	0	1	0	0	2	1
Sasstown Treatment Unit	0	0	0	0	0	7	17
Behwan Treatment Unit	0	0	0	0	0	3	0
FJ Grante Hospital Treatment Unit	0	0	4	0	0	1	2
JJ Dossen Hospital Treatment Unit	0	0	5	0	0	4	10
Pleebo Health Center Treatment Unit	0	0	10	0	0	2	11
Tellewoyan Memorial Hospital Treatment Unit	0	0	12	0	0	1	15
Foya Borma Hospital Treatment Unit	0	0	6	0	0	6	5
Zorzor Treatment Unit	0	0	4	0	0	1	3
Robert Sport Treatment Unit	0	0	0	0	0	1	2
Ganta United Methodist Hospital Treatment Unit	0	0	1	0	0	0	3
Arcelor Mittal Yekepa Treatment Unit	0	0	9	0	0	3	22
Jackson F. Doe Treatment Unit	0	0	1	0	0	3	3
St. Frances Hospital Treatment Unit	0	0	0	0	0	1	6
Fish Town Hospital Treatment Unit	0	0	7	0	0	28	40
E&J Medical Center Treatment Unit	1	0	15	0	0	2	22
TOTAL	2	0	647	0	8	126	381

Demographic Breakdown of Cases in Treatment Units Daily Report – July 27, 2020

Currently in the Treatment Unit

Treatment Facility Name	Total Census	Total Adult	Total Children	Total Female	Total Male	Total Confirm	Others	Pregnant	Children				
									<1	1-5	6-10	11-17	
14 Military Hospital Treatment Unit	16	16	0	3	13	16	0	0	0	0	0	0	0
Union Treatment Center	15	12	3	5	10	15	0	0	1	0	2	0	0
Bomi Treatment Unit	7	4	3	2	5	6	1	0	1	1	0	1	0
Arcelor Mittal Treatment Unit	0	0	0	0	0	0	0	0	0	0	0	0	0
Liberia Government Hospital Treatment Unit	0	0	0	0	0	0	0	0	0	0	0	0	0
LAC Hospital Treatment Unit	13	13	0	6	7	13	0	0	0	0	0	0	0
Duside Hospital Treatment Unit	5	2	3	0	5	5	0	0	0	0	0	0	3
Martha Tubman Treatment Unit	3	3	0	1	2	3	0	0	0	0	0	0	0
Rally Time Treatment Unit	2	2	0	1	1	2	0	0	0	0	0	0	0
Sasstown Treatment Unit	7	7	0	4	3	7	0	0	0	0	0	0	0
Behwan Treatment Unit	3	3	0	3	0	3	0	0	0	0	0	0	0
FJ Grante Hospital Treatment Unit	1	1	0	0	1	1	0	0	0	0	0	0	0
JJ Dossen Hospital Treatment Unit	4	3	1	3	1	4	0	0	0	0	1	0	0
Pleebo Health Center Treatment Unit	2	2	0	2	0	2	0	0	0	0	0	0	0
Tellewoyan Memorial Hospital Treatment Unit	1	1	0	0	1	1	0	0	0	0	0	0	0
Foya Borma Hospital Treatment Unit	6	3	3	2	4	6	0	0	0	0	1	2	0
Zorzor Treatment Unit	1	0	1	1	0	1	0	0	0	0	0	0	1
Robert Sport Treatment Unit	1	1	0	0	1	1	0	0	0	0	0	0	0
Bong Treatment Unit	2	2	0	2	0	2	0	0	0	0	0	0	0
Ganta United Methodist Hospital Treatment Unit	0	0	0	0	0	0	0	0	0	0	0	0	0
Arcelor Mittal Yekepa Treatment Unit	3	1	2	1	2	3	0	0	0	0	0	0	2
Jackson F. Doe Treatment Unit	3	3	0	0	3	3	0	0	0	0	0	0	0
St. Frances Hospital Treatment Unit	1	1	0	0	1	1	0	0	0	0	0	0	0
Fish Town Hospital Treatment Unit	28	28	0	4	24	28	0	0	0	0	0	0	0
E&J Medical Center Treatment Unit	2	2	0	1	1	2	0	0	0	0	0	0	0
TOTAL	126	110	16	41	85	125	1	0	2	1	4	9	0

Recoveries from Treatment Units (16 March – 27 July 2020)

Treatment Unit	New admissions	Cumulative admissions	New Recoveries	Cumulative Recoveries
14 Military Hospital & Union Treatment Center, Montserrado	0	529	0	499
Chief Jallahlone Hospital, Gbarpolu	0	3	0	1
Jackson F. Doe Hospital, Nimba	0	5	0	1
E&J Medical Center, Nimba	1	16	0	15
Ganta Methodist Hospital, Nimba	0	1	0	1
AML Yekepa, Nimba	0	12	0	9
Pleebo Health Center, Maryland	0	12	0	10
JJ Dossen Hospital, Maryland	0	9	0	5
Martha Tubman Treatment Unit	1	3	0	0
Rally Time Hospital, Grand Kru	0	3	0	1
Sasstown Health Center, Grand Kru	0	7	0	0
Behwan Health Center	0	3	0	0
Fish Town Hospital, River Gee	0	32	0	7
Robert Sport Treatment Unit	0	1	0	0
Liberia Government Hospital, Bomi	0	14	0	7
Tellewoyan Hospital, Lofa	0	13	0	12
Foya Hospital, Lofa	0	12	0	6
Curran Hospital, Lofa	0	5	0	4
Phebe Hospital, Bong	0	26	0	24
Liberia Government Hospital, Grand Bassa	0	4	0	3
Arcelor Mittal, Grand Bassa	0	5	0	5
LAC Hospital, Grand Bassa	0	13	0	0
St. Francis Hospital Treatment Unit, Rivercess	0	1	0	0
Duside Hospital, Margibi	0	39	0	33
F. J. Grant Hospital, Sinoe	0	5	0	4
Total	2	773	0	647

Laboratory Samples Evaluated – July 27, 2020

County	Total	New Positive	Repeat Positive	Initial Negative	Repeat Test Negative	Pending Lab Result
Bong	7	0	0	6	0	1
Grand Bassa	20	4	1	13	0	2
Grand Gedeh	9	1	0	7	0	1
Grand Kru	1	0	0	1	0	0
Lofa	16	0	0	2	11	3
Maryland	1	0	0	1	0	0
Montserrado	74	4	1	56	11	2
Nimba	11	1	0	9	0	1
River Gee	27	0	1	20	4	2
TOTAL	166	10	3	115	26	12

Summary of COVID-19 Contact Tracing in Response Counties

County	New Contacts Line listed	Cumulative Contacts	No. of Health Care Workers as Contacts	Cumulative no. of Health Care Workers as contacts	Contacts became a case	Cumulative contacts that became a case	Contacts Completed 14 Days	Cumulative Contacts Completing 14 Days	Contacts Under Follow-up	Contacts lost to Follow-up
Montserrado	0	4196	0	451	0	160	1226	3873	249	3
Margibi	0	464	0	124	0	42	0	365	57	0
Grand Bassa	26	325	0	140	0	26	0	129	170	0
Sinoe	1	191	1	30	0	1	0	181	10	0
Gbarpolu	0	87	0	13	0	8	0	53	34	0
Lofa	0	738	0	92	0	34	0	535	191	0
Nimba	0	581	0	53	0	24	6	510	39	8
Bong	0	280	0	70	0	28	0	174	104	2
Grand CapeMount	0	21	0	0	0	0	0	0	0	0
RiverGee	0	123	0	13	0	30	34	109	14	0
Maryland	0	83	0	30	0	7	0	0	83	0
Bomi	0	102	0	10	0	13	0	0	70	0
Rivercess	0	54	0	46	0	0	0	0	54	0
Grand Kru	0	282	0	131	0	13	0	98	171	0
Grand Gedeh	0	23	0	0	0	0	0	0	21	0
National	27	7550	1	1203	0	386	1266	6027	1267	13

Active Case Finding (16 March – 27 July 2020)

County	Visitation				Identification, Investigation & Testing								Supervision		
	No. of communities Assigned	No. of communities Visited	No. of Households Assigned	No. of Households Visited	Sick persons Identified	Cumulative Sick persons identified	Sick persons referred for Investigation	Cumulative Sick person referred for Investigation	Sick persons Investigated	Cumulative Sick persons Investigated	Sick persons investigated and referred for testing	Cumulative Sick persons investigated and referred for testing	No. of Sick persons followed-up today	No. of supervision visits	No. of Supervisory Calls
Bomi	127	10	455	455	0	0	0	0	0	0	0	0	0	2	0
Bong	333	248	48611	5700	0	280	0	280	0	280	0	2	7	0	0
Montserratado	250	0	0	94717	0	571	0	369	0	350	0	301	0	0	0
Margibi	15	15	15	128	0	4	0	4	0	16	0	10	7	8	7
Maryland	0	0	278	278	2	3	2	3	2	3	2	3	2	0	0
Grand Cape Mount	63	66	138	186	0	0	0	0	0	0	0	0	0	0	0
Grand Kru	100	50	2000	900	1	19	1	19	1	19	1	17	0	1	6
Sinoe	90	90	5232	2534	0	619	0	169	0	169	0	1	0	5	5
Rivercess	33	33	495	495	0	0	0	0	0	0	0	0	0	0	0
River Gee	100	80	50	20	0	24	0	24	0	24	0	24	37	6	0
Gbarpolu	54	54	1,270	409	0	221	0	221	0	221	0	25	39	0	0
Grand Bassa	18	18	284	284	23	369	23	369	23	369	0	0	0	0	0
Nimba	430	381	2460	1639	0	54	0	54	0	54	0	36	2	0	0
Lofa	201	201	482	482	0	78	0	78	0	78	0	78	0	32	163
National	1781	1195	60991	107732	26	1873	26	1221	3	1583	3	495	94	54	181

Thank you for Listening