



Liberia COVID-19 Daily Sitrep 140 (2nd August 2020)

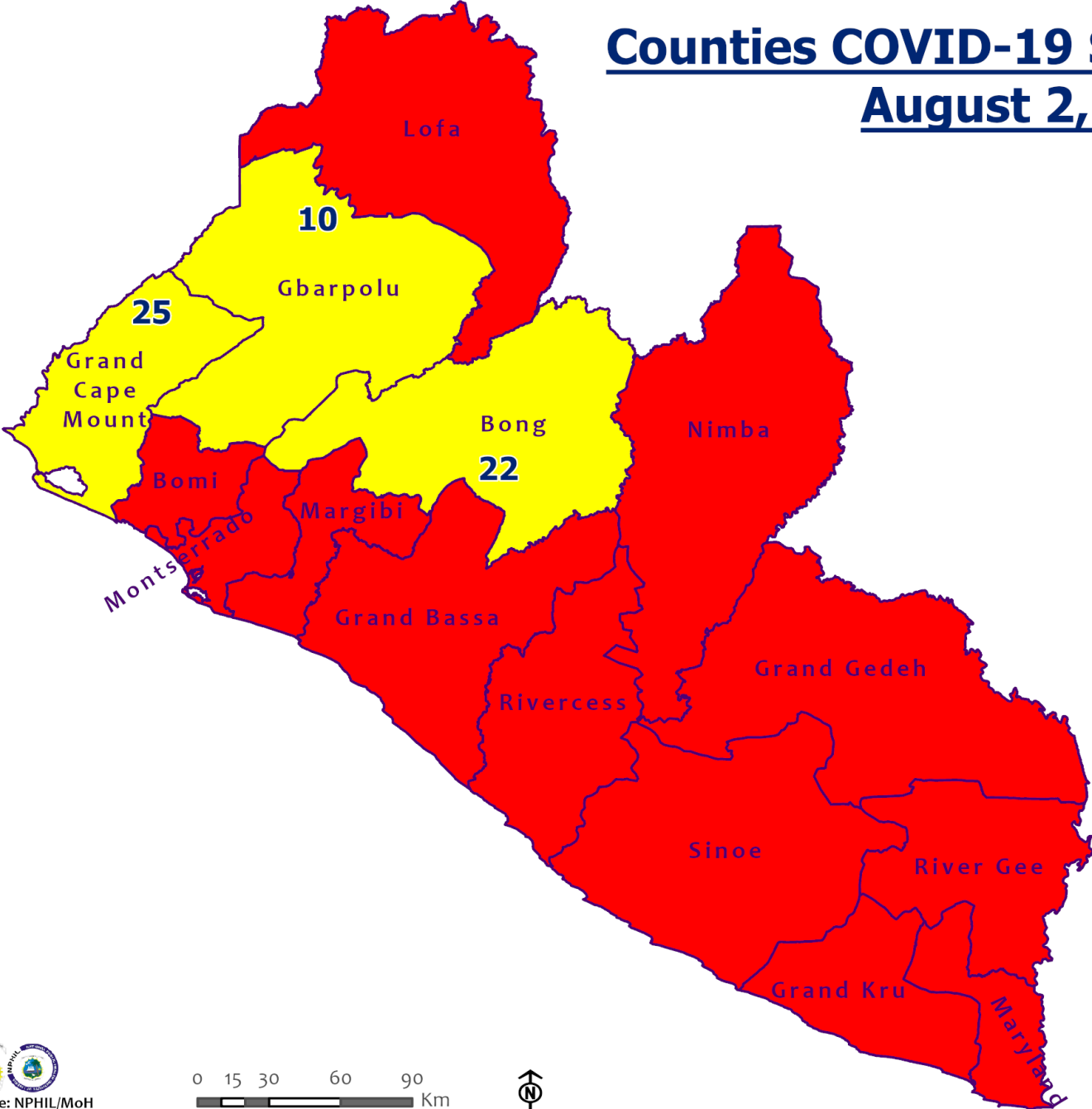
Summary of COVID-19 Cases by Reporting County, Liberia, 16 March – 2 August 2020

County			Confirmed Cumulative Cases
	Laboratory Confirmed Cases	Confirmed Cases on Contact List	
Bomi	0	0	14
Bong	0	0	35
Gbarpolu	0	0	10
Grand Bassa	1	1	44
Grand Cape Mount	0	0	1
Grand Kru	3	3	16
Grand Gedeh	0	0	4
Lofa	0	0	42
Margibi	0	0	66
Maryland	1	1	26
Montserrado	2	1	855
Nimba	0	0	55
Rivercess	0	0	4
River Gee	0	0	36
Sinoe	0	0	6
NATIONAL	7	6	1214

Demographic Breakdown (Gender & Age) of Confirmed COVID-19 Cases (16 March – 2 August 2020)

County	<15 years		15 - 34		35 - 54		55+		All ages		Total Confirmed
	M	F	M	F	M	F	M	F	M	F	
Bomi	2	2	1	2	4	2	0	1	7	7	14
Bong	3	1	1	5	8	7	7	3	19	16	35
Gbarpolu	1	2	0	2	3	1	1	0	5	5	10
Grand Bassa	8	1	8	11	5	7	2	2	23	21	44
Grand Cape Mount	0	0	0	0	0	0	1	0	1	0	1
Grand Kru	0	0	2	5	3	4	2	0	7	9	16
Grand Gedeh	0	0	0	1	3	0	0	0	3	1	4
Lofa	2	3	8	3	13	5	7	1	30	12	42
Margibi	6	3	13	9	16	6	7	6	42	24	66
Maryland	2	0	8	4	6	3	1	2	17	9	26
Montserrado	36	35	213	113	225	98	92	43	566	289	855
Nimba	0	2	14	6	24	3	3	3	41	14	55
Rivercess	0	0	2	2	0	0	0	0	2	2	4
River Gee	0	0	4	3	19	5	5	0	28	8	36
Sinoe	0	0	1	0	4	1	0	0	5	1	6
National	60	49	275	166	333	142	128	61	796	418	1214

Counties COVID-19 Status in Liberia August 2, 2020



Legend

County Status

- Preparedness
- 28-Day Countdown
- Response



0 15 30 60 90 Km



Demographic Breakdown (Gender & Age) of Confirmed COVID-19 Deaths (16 March – 2 August 2020)

County	<15 years		15 - 34		35 - 54		55+		All ages		Total Confirmed
	M	F	M	F	M	F	M	F	M	F	
Bong	0	0	1	0	0	0	3	1	4	1	5
Gbarpolu	0	0	0	0	1	0	1	0	2	0	2
Grand Bassa	0	0	0	0	0	0	0	0	0	0	0
Grand Kru	0	0	0	0	0	0	0	0	0	0	0
Lofa	0	0	1	0	1	1	6	1	8	2	10
Margibi	0	0	0	1	2	1	0	2	2	4	6
Maryland	0	0	0	0	0	0	1	1	1	1	2
Montserrado	0	0	2	0	7	8	16	8	25	16	41
Nimba	0	0	2	0	3	2	3	0	8	2	10
Rivercess	0	0	0	1	0	0	0	0	0	1	1
River Gee	0	0	0	0	0	0	0	0	0	0	0
Sinoe	0	0	1	0	0	0	0	0	1	0	1
National	0	0	7	2	14	12	30	13	51	27	78

Summary of COVID-19 Deaths by Reporting County, Liberia, 16 March – 2 August 2020

County	DAILY REPORT								Cumulative Deaths
	New Suspected Deaths	Laboratory Confirmed Deaths						Confirmed Deaths on Contact List	
		COVID-19 Treatment Unit	Total in COVID-19 Treatment Unit	Health Facility	Total in Health Facility	Community	Total in Community		
Bong	0	0	0	0	4	0	1	0	5
Gbarpolu	0	0	0	0	1	0	0	0	1
Grand Bassa	0	0	0	0	0	0	0	0	0
Grand Kru	0	0	0	0	0	0	0	0	0
Lofa	0	0	0	0	5	0	5	0	10
Maryland	0	0	0	0	2	0	0	0	2
Margibi	0	1	1	0	5	0	0	0	6
Montserrado	0	0	8	0	18	0	16	0	42
Nimba	0	0	1	0	5	0	4	0	10
Rivercess	0	0	0	0	1	0	0	0	1
River Gee	0	0	0	0	0	0	0	0	0
Sinoe	0	0	0	0	1	0	0	0	1
National	0	1	10	0	42	0	26	0	78

The Liberia Case Fatality rate (CFR) officially considered is for deaths that occurred among patients in care at the COVID-19 treatment units across the country. As of 29 July 2020, a total of 9 deaths have been recorded CFR=0.82%. The country is however keeping active surveillance on community deaths and deaths in non COVID-19 treatment health units.

Daily and Cumulative Healthcare Worker (HCW) COVID-19 Cases and Deaths by County, Liberia, 16 March – 2 August 2020

County	DAILY REPORT						CUMULATIVE CASES (ALIVE & DEAD)	
	New Suspected & High Risk Cases (Alive)			New Suspect Death	Laboratory Confirmed Cases	Confirmed Cases on Contact List	Confirmed	Deaths
	Suspect	High Risk	Total					
Bomi	0	0	0	0	0	0	3	0
Bong	0	0	0	0	0	0	19	3
Gbarpolu	0	0	0	0	0	0	1	1
Grand Bassa	0	0	0	0	0	0	18	0
Grand Kru	0	0	0	0	2	2	13	0
Lofa	0	0	0	0	0	0	15	0
Margibi	0	0	0	0	0	0	12	1
Maryland	0	0	0	0	0	0	16	0
Montserrado	0	0	0	0	0	0	81	1
Nimba	0	0	0	0	0	0	7	0
Rivercess	0	0	0	0	0	0	3	0
River Gee	0	0	0	0	0	0	9	0
Sinoe	0	0	0	0	0	0	3	0
NATIONAL	0	0	0	0	2	2	200	6

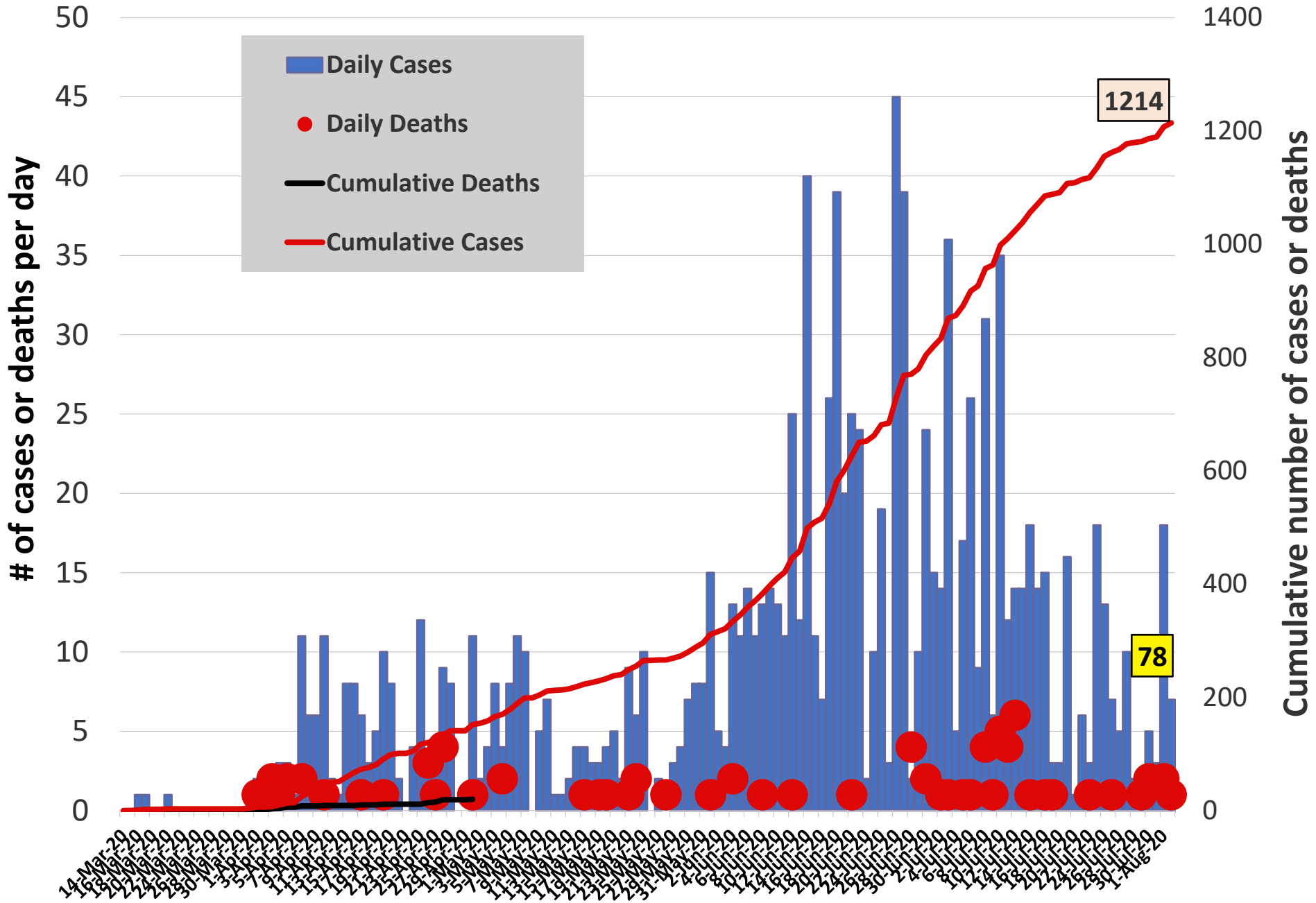
Cadre Cases and Deaths by Health Care Workers (16 March – 2 August 2020)

Health Care Worker Cadre	Montserratado		Margibi		Nimba		River Gee		Sinoe		Grand Kru		Gbarpolu		Bong		Lofa		Grand Bassa		Maryland		Boni		Rivercess		National (Total)	
	Cases	Deaths	Cases	Deaths	Cases	Deaths	Cases	Deaths	Cases	Deaths	Cases	Deaths	Cases	Deaths	Cases	Deaths	Cases	Deaths	Cases	Deaths	Cases	Deaths	Cases	Deaths	Cases	Deaths	Cases	Deaths
Doctors	13	0	1	0	0	0	1	0	0	0	0	0	0	0	1	0	0	0	1	0	0	0	0	0	0	0	17	0
Pharmacists	4	0	0	0	0	0	0	0	0	0	0	0	0	0	0	0	0	0	0	0	0	0	0	0	0	0	4	0
Nurses	22	1	2	0	1	0	5	0	0	0	2	0	1	1	12	1	8	0	6	0	1	0	1	0	0	0	61	3
Nurse Aid	0	0	0	0	2	0	0	0	0	0	4	0	0	0	0	0	0	7	0	2	0	0	0	0	0	15	0	
Midwife	0	0	0	0	0	0	1	0	0	0	1	0	0	0	1	0	1	0	0	0	0	0	0	0	0	4	0	
Radiologist	1	0	0	0	0	0	0	0	0	0	0	0	0	0	0	0	0	0	0	0	0	0	0	0	0	1	0	
Physician Assistants	8	0	1	0	1	0	1	0	0	0	0	0	0	0	0	0	1	0	1	0	0	0	0	0	0	13	0	
Lab Technician	9	0	1	0	2	0	0	0	1	0	1	0	0	0	0	0	2	0	0	0	10	0	0	0	3	0	29	0
Environmental Health Technicians	5	0	0	0	0	0	0	0	0	0	0	0	0	0	0	0	0	0	0	0	0	0	0	0	0	5	0	
Microbiologist	1	0	0	0	0	0	0	0	0	0	0	0	0	0	0	0	0	0	0	0	0	0	0	0	0	1	0	
Epidemiologist	1	0	0	0	0	0	0	0	0	0	0	0	0	0	0	0	0	0	0	0	0	0	0	0	0	1	0	
Dieticians	0	0	7	1	0	0	0	0	0	0	0	0	0	0	0	0	0	1	0	0	0	0	0	0	0	8	1	
Dispenser	0	0	0	0	0	0	0	0	0	0	0	0	0	0	2	1	0	0	0	0	0	0	0	0	0	2	1	
Licensed Practical Nurse	0	0	0	0	0	0	0	0	0	0	0	0	0	0	1	1	0	0	0	0	0	0	0	0	0	1	1	
Psychosocial Worker	1	0	0	0	0	0	0	0	0	0	0	0	0	0	0	0	0	0	0	0	0	0	0	0	0	1	0	
Hygienist	3	0	0	0	0	0	0	0	0	0	0	0	0	0	1	0	0	0	0	0	0	0	0	0	0	4	0	
Logistician	0	0	0	0	0	0	0	0	0	0	0	0	0	0	0	0	0	1	0	0	0	0	0	0	0	1	0	
Vaccinator	0	0	0	0	1	0	0	0	0	0	1	0	0	0	0	0	0	0	0	1	0	1	0	0	0	4	0	
Ambulance Driver	2	0	0	0	0	0	0	0	0	0	0	0	0	0	0	0	2	0	0	0	0	0	0	0	0	4	0	
Procurement Officer	0	0	0	0	0	0	0	0	1	0	0	0	0	0	0	0	0	0	0	0	0	0	0	0	0	1	0	
Registrar/ Accountant	1	0	0	0	0	0	0	0	0	0	0	0	0	0	0	0	0	0	0	0	0	1	0	0	0	2	0	
CHT Secretary	0	0	0	0	0	0	1	0	0	0	0	0	0	0	0	0	0	0	0	0	0	0	0	0	0	1	0	
Hospital Administrator	0	0	0	0	0	0	1	0	0	0	0	0	0	0	0	0	0	0	0	0	0	0	0	0	0	1	0	
Hospital Cleaner	1	0	0	0	0	0	0	0	0	0	1	0	0	0	1	0	0	0	1	0	2	0	0	0	0	6	0	
CHT CHV/ CHSS	0	0	0	0	0	0	0	0	0	0	3	0	0	0	0	0	1	0	0	0	0	0	0	0	0	4	0	
GIS Specialist	1	0	0	0	0	0	0	0	0	0	0	0	0	0	0	0	0	0	0	0	0	0	0	0	0	1	0	
Others	8	0	0	0	0	0	0	0	0	0	0	0	0	0	0	0	0	0	0	0	0	0	0	0	0	8	0	
Total:	81	1	12	1	7	0	10	0	2	0	13	0	1	1	19	3	15	0	18	0	16	0	3	0	3	0	200	6

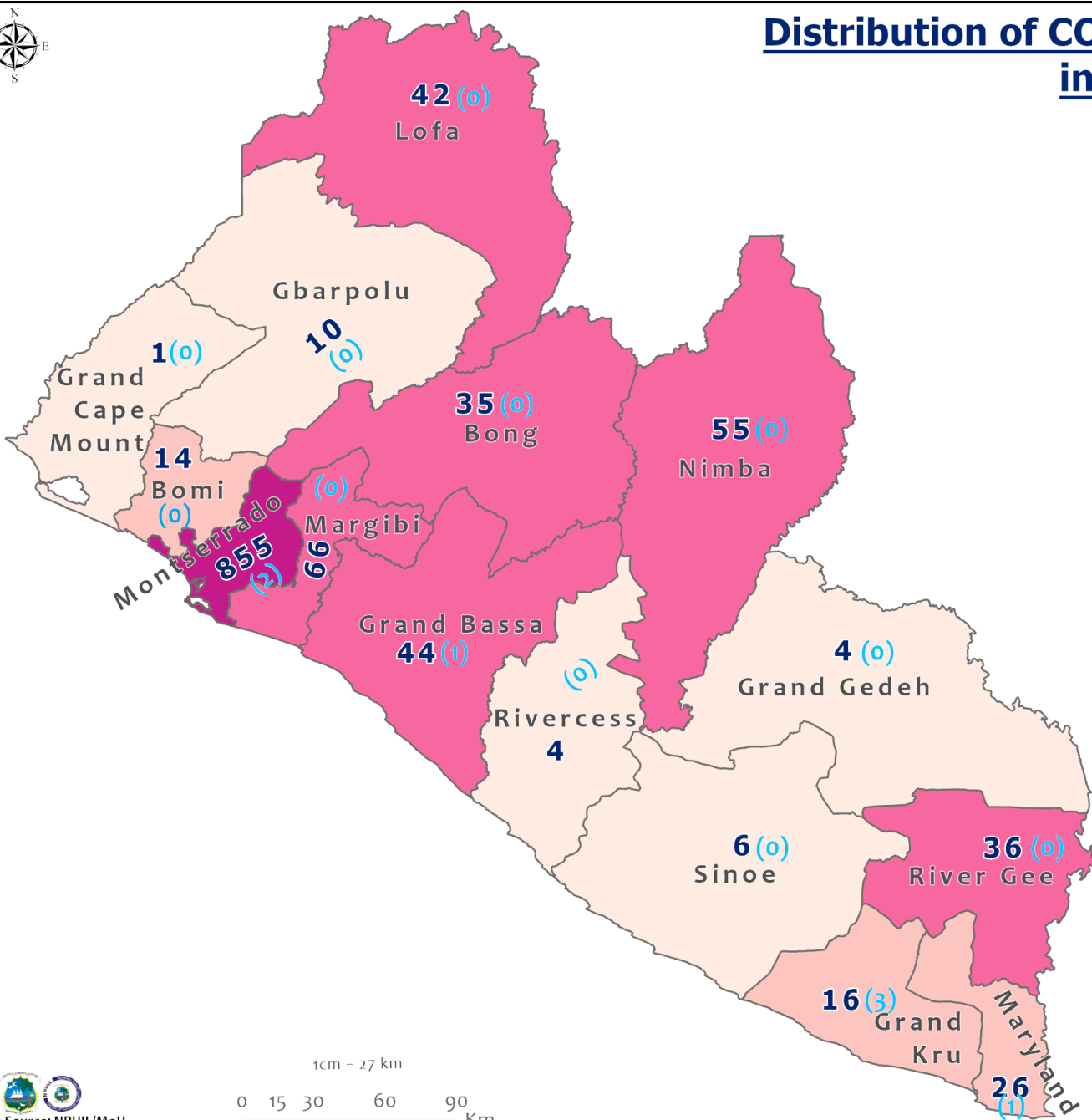
Suspected and High Risk Cases and Deaths (16 March – 2 August 2020)

County	New Suspected	Cumulative Suspected	New High Risk	Cumulative High Risk	New Suspected Deaths	Cumulative Suspected Deaths
Montserrado	210	7104	0	0	0	85
Margibi	0	11	0	44	0	1
Maryland	0	65	0	20	0	7
Bong	0	24	0	178	0	4
Rivercess	0	5	0	12	0	1
River Gee	0	39	0	46	0	0
Lofa	0	80	0	79	0	56
Grand Cape Mount	0	21	0	0	0	0
Bomi	0	9	0	81	0	0
Sinoe	0	46	0	59	0	7
Grand Gedeh	0	54	0	35	0	0
Grand Kru	0	0	0	88	0	0
Gbarpolu	0	91	0	13	0	0
Grand Bassa	0	44	0	32	0	0
Nimba	0	194	0	188	0	14
National	210	7787	0	875	0	175

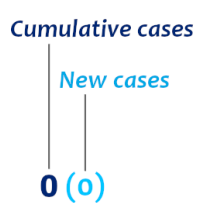
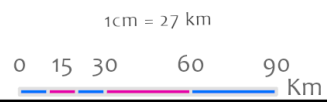
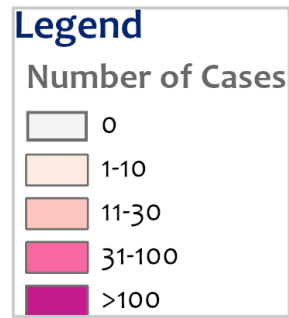
EPI-Curve of Confirmed Cases and Deaths



Distribution of COVID-19 Cases by County in Liberia - August 2, 2020



Total cumulative cases:
1214
 Total new cases:
7



COVID-19 Cases by District in Liberia - August 2, 2020



Total Cases: 1214

Affected Counties	Cumulative Cases
Montserrado	855
Margibi	66
Nimba	55
Grand Bassa	44
Lofa	42
River Gee	36
Bong	35
Maryland	26
Grand Kru	16
Bomi	14
Gbarpolu	10
Sinoe	6
Rivercess	4
Grand Gedeh	4
Grand Cape Mount	1

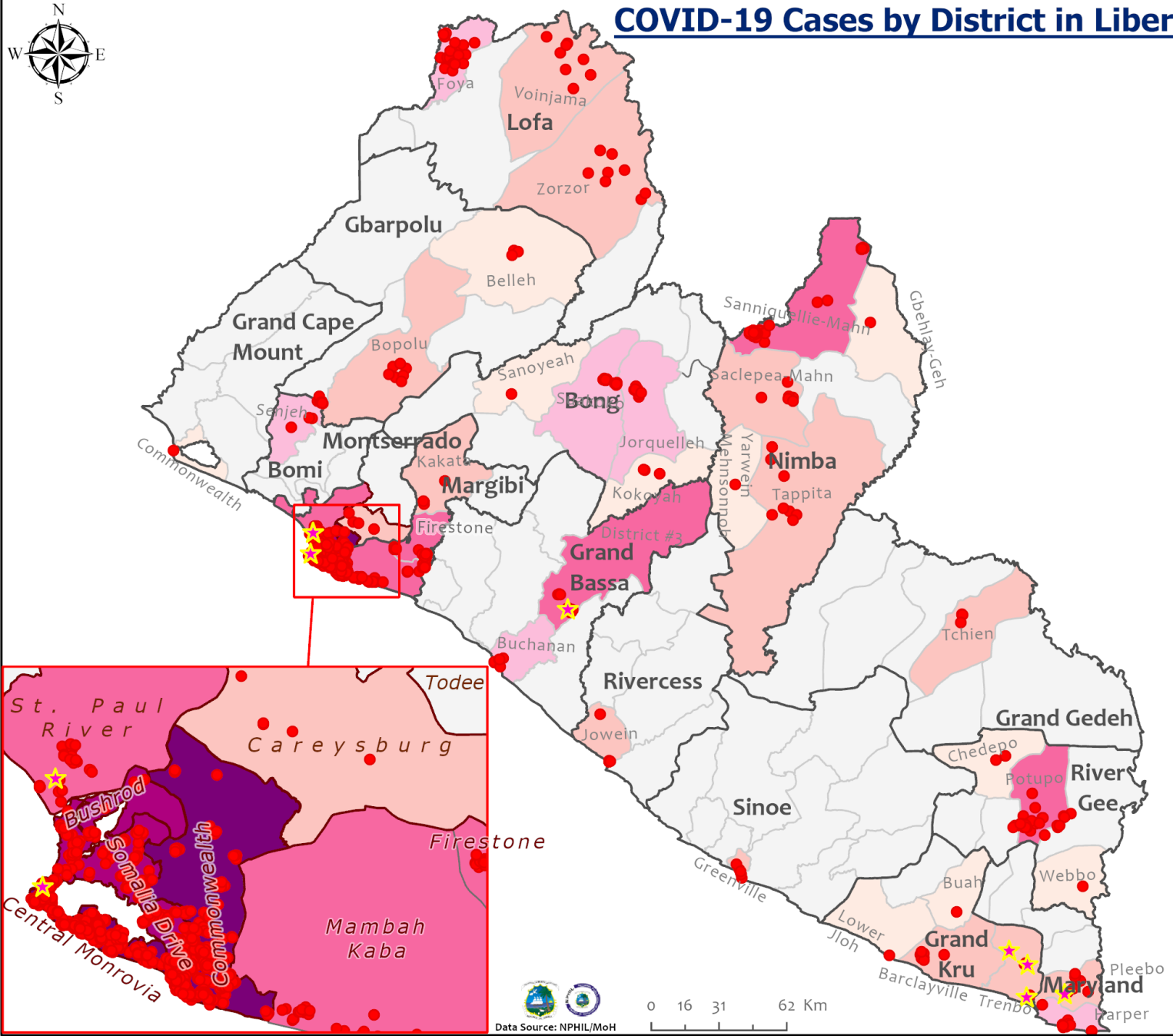
Legend

Case Status

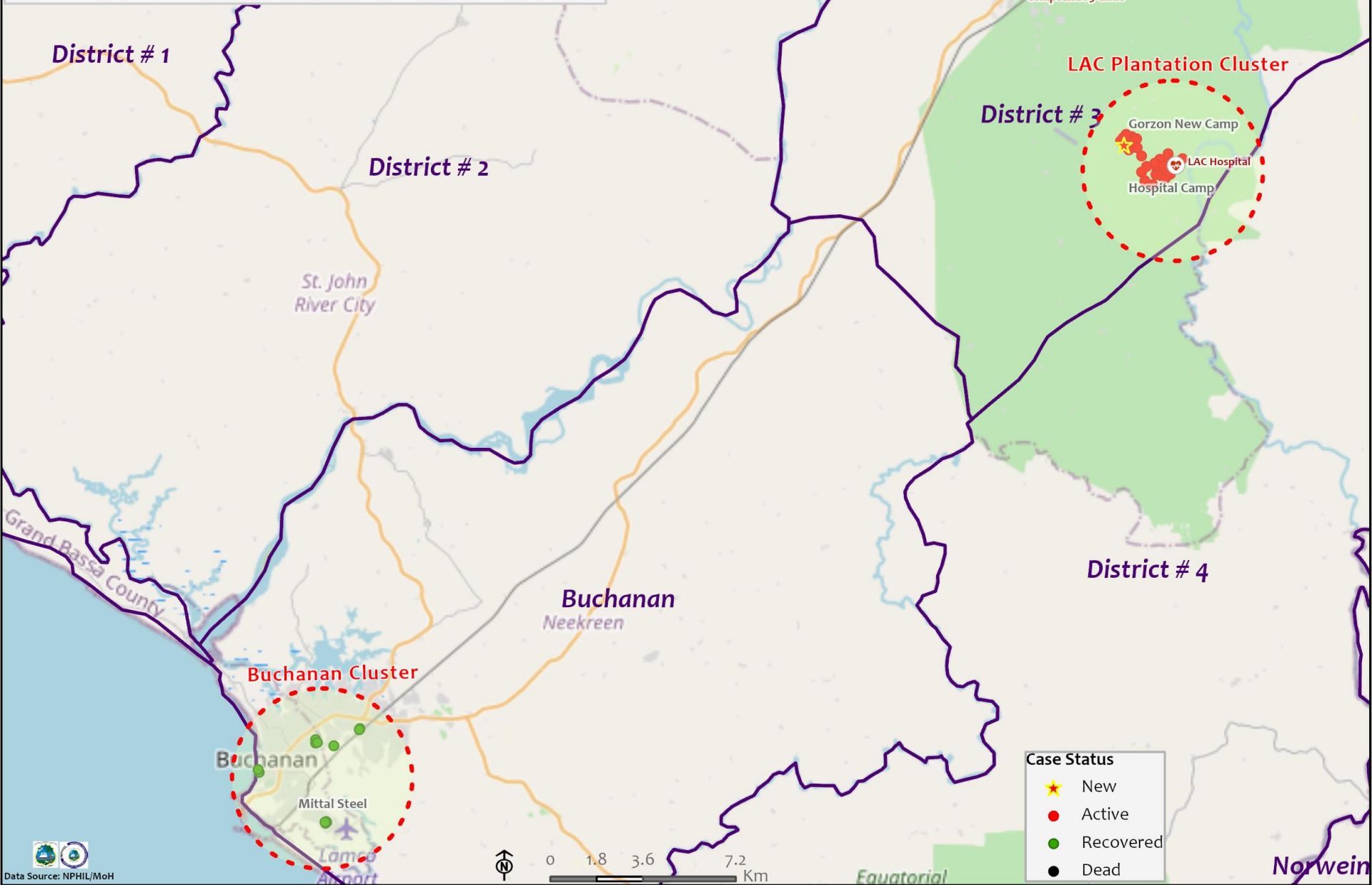
- ★ New confirmed cases
- Confirmed cases

Cases / District

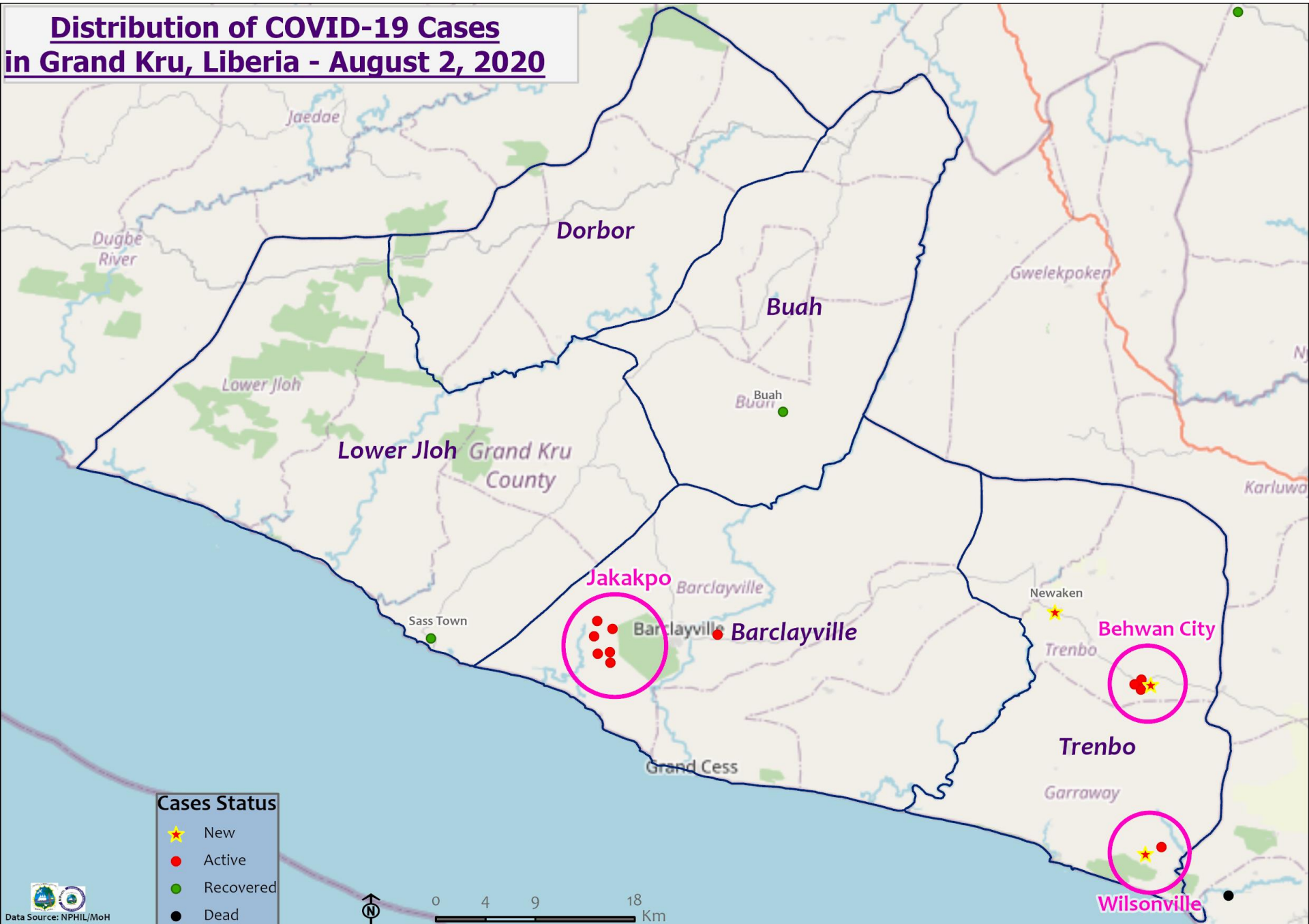
- 0
- 1-3
- 4-10
- 11-20
- 21-50
- 51-100
- 101-400



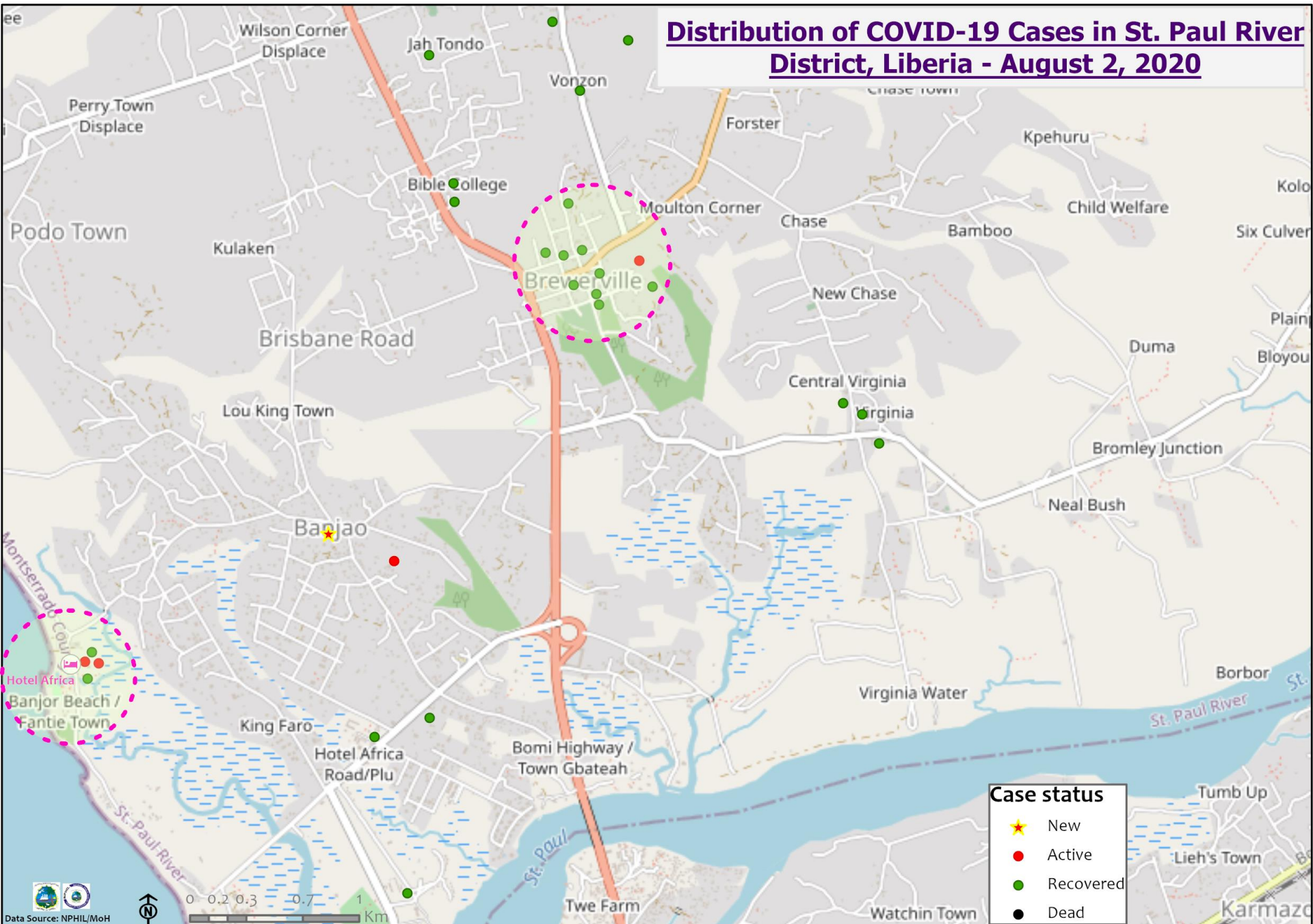
Distribution of COVID-19 Cases in Grand Bassa, Liberia - August 2, 2020



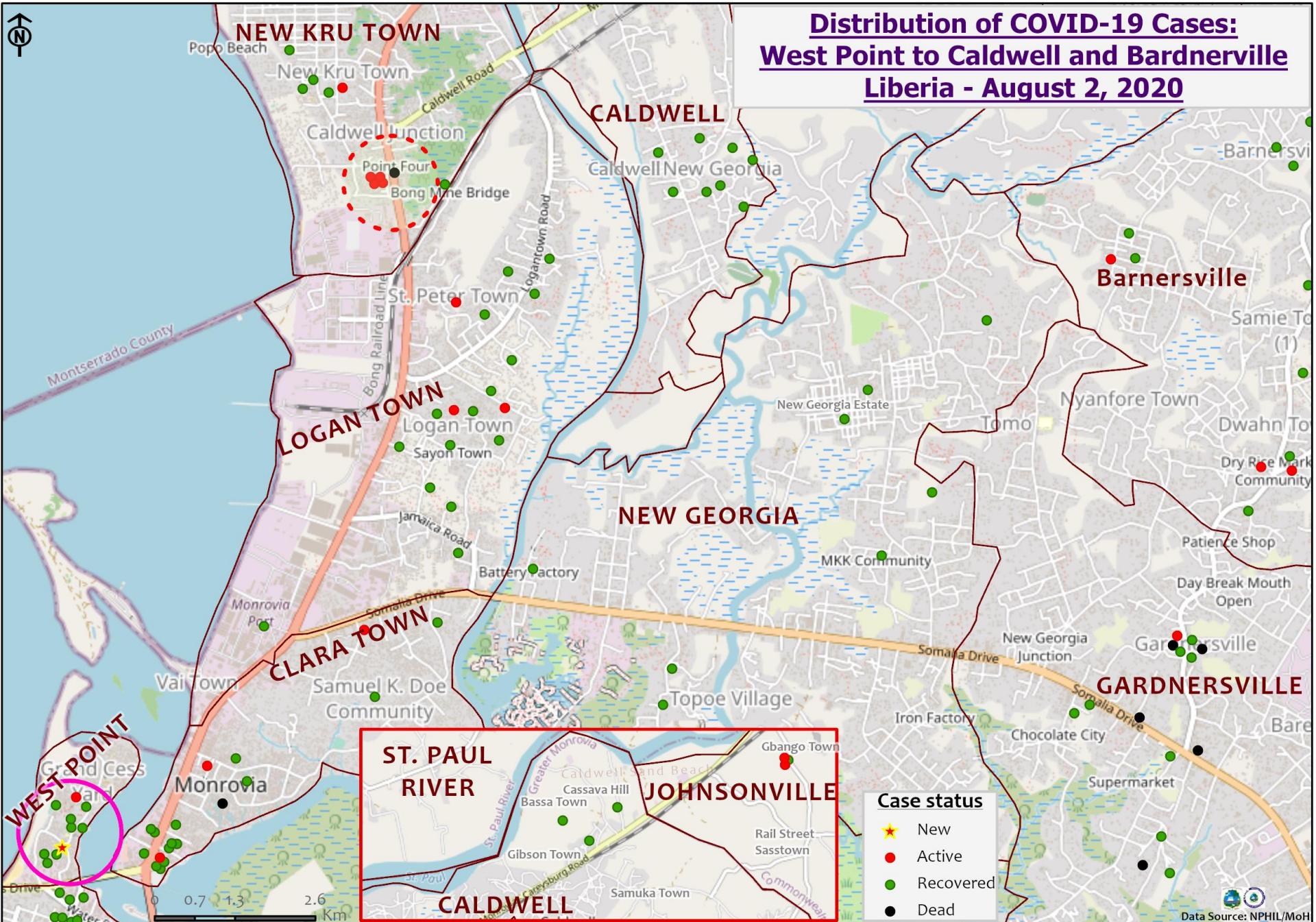
Distribution of COVID-19 Cases in Grand Kru, Liberia - August 2, 2020



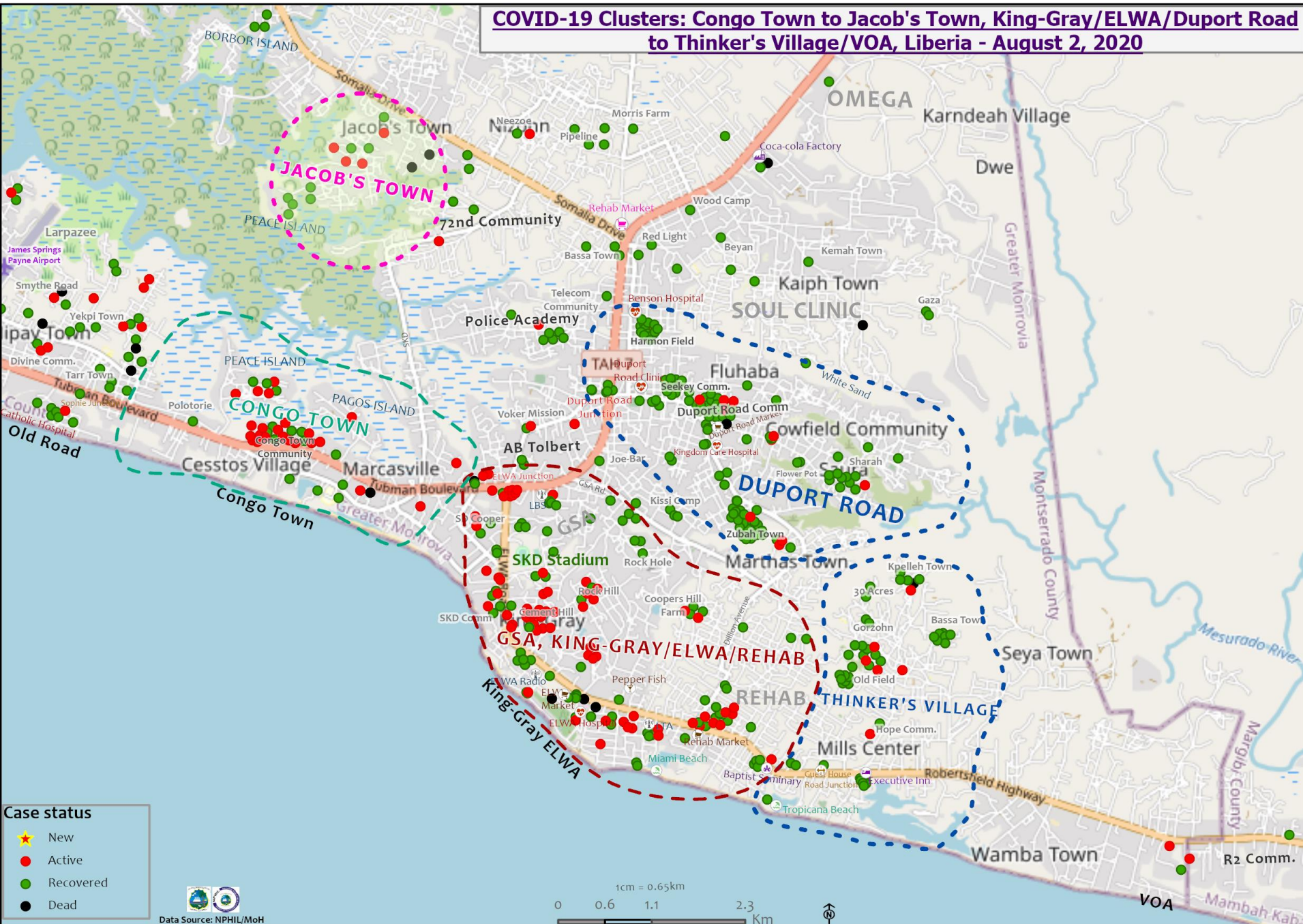
Distribution of COVID-19 Cases in St. Paul River District, Liberia - August 2, 2020



Distribution of COVID-19 Cases: West Point to Caldwell and Bardnerville Liberia - August 2, 2020



COVID-19 Clusters: Congo Town to Jacob's Town, King-Gray/ELWA/Duport Road to Thinker's Village/VOA, Liberia - August 2, 2020



Case status

- ★ New
- Active
- Recovered
- Dead

Data Source: NPHIL/MoH

1cm = 0.65km
 0 0.6 1.1 2.3 Km

Precautionary Observation Centers (POC): Admission and Discharges

County	Precautionary Observation Centers				Cumulative Move to Treatment
	New admissions	Currently in POC	Daily Discharges	Cumulative Discharges (not including transferred)	
Bomi	0	0	0	0	0
Gbarpolu	0	0	0	0	0
Grand Bassa	0	0	0	42	0
Grand Gedeh	0	29	0	0	0
Grand Kru	0	20	0	0	0
Margibi	0	35	0	87	0
Maryland	0	3	0	11	0
Montserrado	0	10	0	90	0
Nimba	0	2	0	33	0
River Gee	0	2	0	8	0
Sinoe	0	10	0	190	0
Lofa	0	0	4	363	0
NATIONAL	0	111	4	824	0

Daily Summary Report at Treatment Units – August 2, 2020

Treatment Facility Name	New admissions	Daily Discharges	Cumulative Recoveries	Daily Deaths	Cumulative Deaths	Currently in treatment	Number of Available beds
Bomi Treatment Unit	0	0	7	0	0	7	10
Bong Treatment Unit	0	0	26	0	0	0	26
Chief Jallahlone Hospital Treatment Unit	0	0	1	0	0	0	4
Arcelor Mittal Treatment Unit	0	0	5	0	0	0	4
LGH Treatment Unit	0	0	3	0	0	0	3
LAC Treatment Unit	0	0	0	0	0	13	18
14 Military Hospital Treatment Unit	0	3	458	0	8	13	97
Union Treatment Center	0	2	60	0	0	8	45
Duside Hospital Treatment Unit	0	0	33	1	1	5	14
Martha Tubman Hospital Treatment Unit	0	0	0	0	0	3	8
Rally Time Treatment Unit	0	0	1	0	0	2	1
Sasstown Treatment Unit	0	0	0	0	0	7	17
Behwan Treatment Unit	0	0	0	0	0	3	0
FJ Grante Hospital Treatment Unit	0	0	4	0	0	1	2
JJ Dossen Hospital Treatment Unit	0	0	5	0	0	4	10
Pleebo Health Center Treatment Unit	0	0	10	0	0	4	9
Tellewoyan Memorial Hospital Treatment Unit	0	0	12	0	0	1	15
Foya Borma Hospital Treatment Unit	0	0	12	0	0	0	11
Zorzor Treatment Unit	0	0	4	0	0	1	3
Robert Sport Treatment Unit	0	0	0	0	0	1	2
Ganta United Methodist Hospital Treatment Unit	0	0	1	0	0	0	3
Arcelor Mittal Yekepa Treatment Unit	0	0	12	0	0	0	15
Jackson F. Doe Treatment Unit	0	0	1	0	1	3	3
St. Frances Hospital Treatment Unit	0	0	0	0	0	2	5
Fish Town Hospital Treatment Unit	0	0	26	0	0	9	26
E&J Medical Center Treatment Unit	0	0	15	0	0	1	23
TOTAL	0	5	696	1	10	88	374

Demographic Breakdown of Cases in Treatment Units Daily Report – August 2, 2020

Currently in the Treatment Unit

Treatment Facility Name	Total Census	Total Adult	Total Children	Total Female	Total Male	Total Confirm	Others	Pregnant	Children			
									<1	1-5	6-10	11-17
14 Military Hospital Treatment Unit	13	13	0	4	9	13	0	0	0	0	0	0
Union Treatment Center	8	8	0	5	3	8	0	0	0	0	0	0
Bomi Treatment Unit	7	4	3	2	5	6	1	0	1	1	0	1
Arcelor Mittal Treatment Unit	0	0	0	0	0	0	0	0	0	0	0	0
Liberia Government Hospital Treatment Unit	0	0	0	0	0	0	0	0	0	0	0	0
LAC Hospital Treatment Unit	13	13	0	6	7	13	0	0	0	0	0	0
Duside Hospital Treatment Unit	5	2	3	0	5	5	0	0	0	0	0	3
Martha Tubman Treatment Unit	3	3	0	1	2	3	0	0	0	0	0	0
Rally Time Treatment Unit	2	2	0	1	1	2	0	0	0	0	0	0
Sasstown Treatment Unit	7	7	0	4	3	7	0	0	0	0	0	0
Behwan Treatment Unit	3	3	0	3	0	3	0	0	0	0	0	0
FJ Grante Hospital Treatment Unit	1	1	0	0	1	1	0	0	0	0	0	0
JJ Dossen Hospital Treatment Unit	4	3	1	3	1	4	0	0	0	0	1	0
Pleebo Health Center Treatment Unit	4	4	0	2	2	4	0	0	0	0	0	0
Tellewoyan Memorial Hospital Treatment Unit	1	1	0	0	1	1	0	0	0	0	0	0
Foya Borma Hospital Treatment Unit	0	0	0	0	0	0	0	0	0	0	0	0
Zorzor Treatment Unit	1	0	1	1	0	1	0	0	0	0	0	1
Robert Sport Treatment Unit	1	1	0	0	1	1	0	0	0	0	0	0
Bong Treatment Unit	0	0	0	0	0	0	0	0	0	0	0	0
Ganta United Methodist Hospital Treatment Unit	0	0	0	0	0	0	0	0	0	0	0	0
Arcelor Mittal Yekepa Treatment Unit	0	0	0	0	0	0	0	0	0	0	0	0
Jackson F. Doe Treatment Unit	3	3	0	0	3	3	0	0	0	0	0	0
St. Frances Hospital Treatment Unit	2	2	0	0	2	2	0	0	0	0	0	0
Fish Town Hospital Treatment Unit	9	9	0	0	9	9	0	0	0	0	0	0
E&J Medical Center Treatment Unit	1	1	0	0	1	1	0	0	0	0	0	0
TOTAL	88	80	8	32	56	87	1	0	1	1	1	5

Recoveries from Treatment Units (16 March – 2 August 2020)

Treatment Unit	New admissions	Cumulative admissions	New Recoveries	Cumulative Recoveries
14 Military Hospital & Union Treatment Center, Montserrado	0	542	5	518
Chief Jallahlone Hospital, Gbarpolu	0	3	0	1
Jackson F. Doe Hospital, Nimba	0	5	0	1
E&J Medical Center, Nimba	0	16	0	15
Ganta Methodist Hospital, Nimba	0	1	0	1
AML Yekepa, Nimba	0	12	0	12
Pleebo Health Center, Maryland	0	14	0	10
JJ Dossen Hospital, Maryland	0	9	0	5
Martha Tubman Treatment Unit	0	3	0	0
Rally Time Hospital, Grand Kru	0	3	0	1
Sasstown Health Center, Grand Kru	0	7	0	0
Behwan Health Center	0	3	0	0
Fish Town Hospital, River Gee	0	35	0	26
Robert Sport Treatment Unit	0	1	0	0
Liberia Government Hospital, Bomi	0	14	0	7
Tellewoyan Hospital, Lofa	0	13	0	12
Foya Hospital, Lofa	0	12	0	12
Curran Hospital, Lofa	0	5	0	4
Phebe Hospital, Bong	0	26	0	26
Liberia Government Hospital, Grand Bassa	0	4	0	3
Arcelor Mittal, Grand Bassa	0	5	0	5
LAC Hospital, Grand Bassa	0	13	0	0
St. Francis Hospital Treatment Unit, Rivercess	0	2	0	0
Duside Hospital, Margibi	0	39	0	33
F. J. Grant Hospital, Sinoe	0	5	0	4
Total	0	792	5	696

Laboratory Samples Evaluated – August 2, 2020

County	Total	New Positive	Repeat Positive	Initial Negative	Repeat Test Negative	Pending Lab Result
Bong	11	0	0	10	1	2
Grand Bassa	1	1	0	0	0	0
Grand Gedeh	13	0	0	13	0	0
Grand Kru	31	3	2	16	8	2
Lofa	2	0	0	2	0	0
Margibi	6	0	0	6	0	0
Maryland	25	1	2	21	0	1
Montserrado	71	2	0	69	2	3
Nimba	1	0	0	1	0	0
Rivercess	5	0	0	5	0	0
River Gee	1	0	0	0	1	0
TOTAL	174	7	4	143	12	8

Summary of COVID-19 Contact Tracing in Response Counties

County	New Contacts Line listed	Cumulative Contacts	No. of Health Care Workers as Contacts	Cumulative no. of Health Care Workers as contacts	Contacts became a case	Cumulative contacts that became a case	Contacts Completed 14 Days	Cumulative Contacts Completing 14 Days	Contacts Under Follow-up	Contacts lost to Follow-up
Montserrado	0	4266	0	451	0	182	7	3911	281	3
Margibi	0	476	0	125	0	42	0	365	69	0
Grand Bassa	0	328	0	140	0	26	0	129	173	0
Sinoe	0	191	0	30	0	1	0	181	10	0
Gbarpolu	0	87	0	13	0	8	0	53	34	0
Lofa	0	738	0	92	0	34	0	665	41	0
Nimba	0	581	0	53	0	25	0	530	28	8
Bong	0	280	0	70	0	28	27	270	8	2
Grand CapeMount	0	21	0	0	0	0	0	0	0	0
RiverGee	0	123	0	13	0	30	0	109	14	0
Maryland	0	108	0	28	0	9	0	0	108	0
Bomi	0	125	0	9	0	13	0	91	34	0
Rivercess	0	88	0	55	0	0	0	22	66	0
Grand Kru	0	315	0	131	0	13	0	98	204	0
Grand Gedeh	0	35	0	11	3	3	0	0	32	0
National	0	7762	0	1221	3	414	34	6424	1102	13

Active Case Finding (16 March – 2 August 2020)

County	Visitation				Identification, Investigation & Testing								Supervision		
	No. of communities Assigned	No. of communities Visited	No. of Households Assigned	No. of Households Visited	Sick persons Identified	Cumulative Sick persons identified	Sick persons referred for Investigation	Cumulative Sick person referred for Investigation	Sick persons Investigated	Cumulative Sick persons Investigated	Sick persons investigated and referred for testing	Cumulative Sick persons investigated and referred for testing	No. of Sick persons followed-up today	No. of supervision visits	No. of Supervisory Calls
Bomi	127	9	335	335	0	0	0	0	0	0	0	0	0	3	0
Bong	333	248	48611	5886	7	328	7	328	7	328	0	2	21	0	0
Montserratado	250	0	0	131996	0	571	0	371	0	352	0	303	0	0	0
Margibi	0	0	0	0	0	0	0	0	0	0	0	0	0	0	0
Maryland	17	17	140	140	0	0	0	2	0	2	0	2	2	0	0
Grand Cape Mount	73	119	167	238	0	0	0	0	0	0	0	0	0	0	0
Grand Kru	100	50	2000	1100	0	19	0	19	0	19	0	17	0	1	4
Sinoe	90	90	5232	2534	0	619	0	169	0	169	0	1	0	5	5
Rivercess	33	28	495	456	0	0	0	0	0	0	0	0	0	0	0
River Gee	100	80	50	20	0	24	0	24	0	24	0	24	37	6	0
Gbarpolu	15	15	150	140	0	88	0	88	0	88	0	23	15	0	0
Grand Bassa	22	22	268	268	10	499	10	499	10	499	0	0	0	0	0
Nimba	430	381	2460	1599	0	54	0	54	0	54	0	36	1	0	0
Lofa	101	101	591	591	0	80	0	80	0	80	0	80	0	8	193
National	1643	1110	59586	144847	17	2282	17	1634	17	1527	0	486	76	23	202

Thank you for Listening