



Liberia COVID-19 Daily Sitrep 42 (26th April 2020)

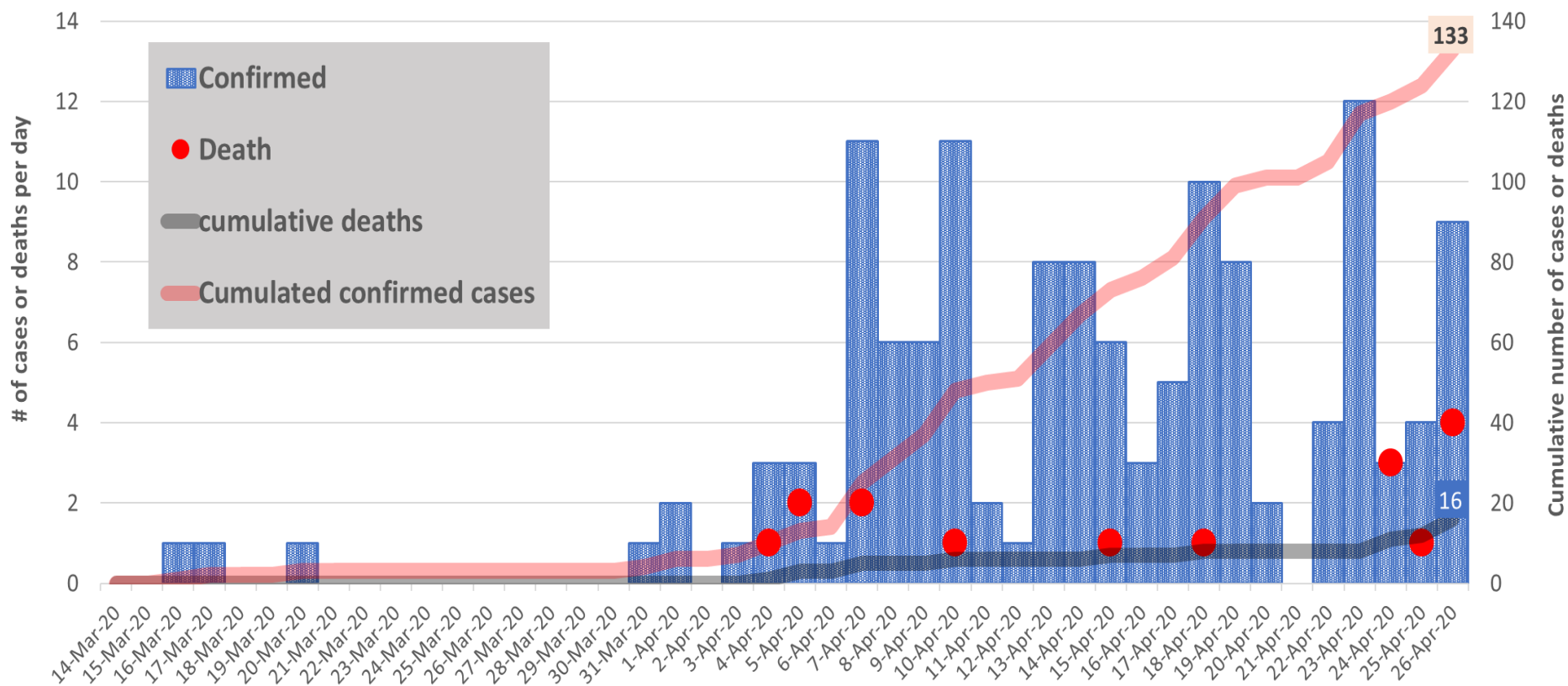
Summary of COVID-19 Cases and Deaths by Reporting County, Liberia, 16 Mar - 26 Apr 2020

County	DAILY REPORT						CUMULATIVE		
	New Suspected & High Risk Cases (Alive)			New Suspected (Dead)		Laboratory Confirmed Cases	Confirmed Cases on Contact List	(16 March-26th April 2020)	
	Total	Suspect	High Risk	Total	Suspect			Confirmed	Deaths
Grand Kru	0	0	0	0	0	0	0	1	0
Margibi	0	0	0	0	0	2	0	2	1
Maryland	1	1	0	0	0	0	0	1	0
Montserrado	47	47	0	2	2	7	0	122	12
Nimba	1	1	0	0	0	0	0	5	3
River Gee	0	0	0	0	0	0	0	1	0
Sinoe	0	0	0	0	0	0	0	1	0
NATIONAL	49	49	0	2	2	9	0	133	16

Daily and Cumulative Healthcare Worker (HCW) COVID-19 Cases and Deaths by County, Liberia, 16 Mar - 26 Apr 2020

County	DAILY REPORT						CUMULATIVE		
	New Suspected & High Risk Cases (Alive)			New Suspected (Dead)		Laboratory Confirmed Cases	Confirmed Cases on Contact List	Number of Confirmed & Dead Cases (16 March - 26 April)	
	Total	Suspect	High Risk	Total	Suspect			Confirmed	Deaths
Grand Kru	0	0	0	0	0	0	0	0	
Margibi	0	0	0	0	0	0	0	0	
Maryland	1	1	0	0	0	0	0	0	
Montserrado	0	0	0	0	0	0	31	1	
Nimba	1	0	1	0	0	0	0	0	
River Gee	0	0	0	0	0	0	0	0	
Sinoe	0	0	0	0	0	0	0	0	
NATIONAL	2	1	1	0	0	0	31	1	

EPI-Curve of Confirmed Cases and Deaths



COVID-19 Cases in Liberia - April 26, 2020



Legend

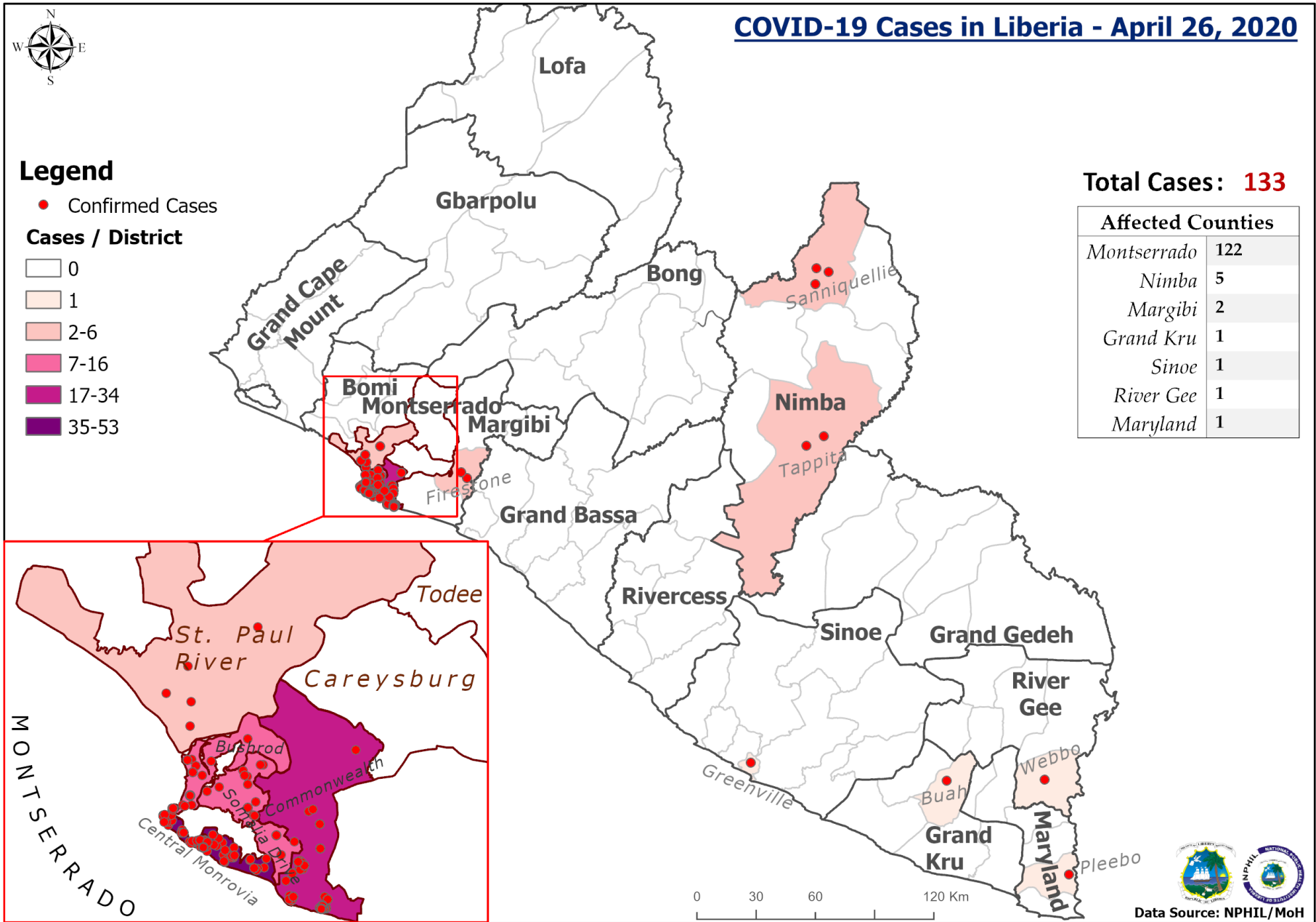
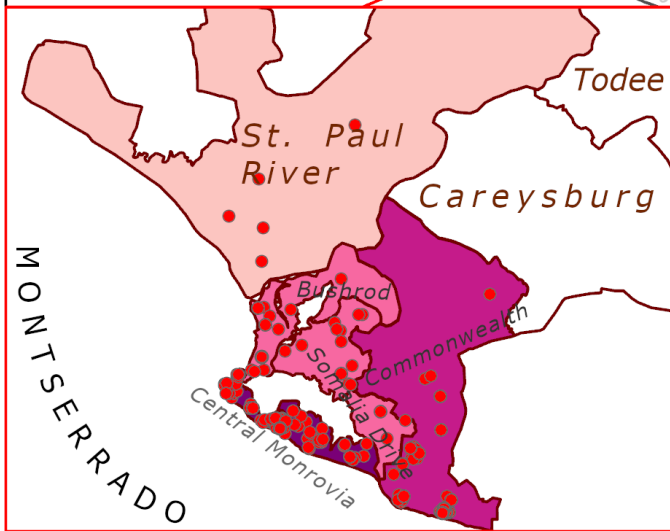
● Confirmed Cases

Cases / District

- 0
- 1
- 2-6
- 7-16
- 17-34
- 35-53

Total Cases: 133

Affected Counties	
Montserrado	122
Nimba	5
Margibi	2
Grand Kru	1
Sinoe	1
River Gee	1
Maryland	1

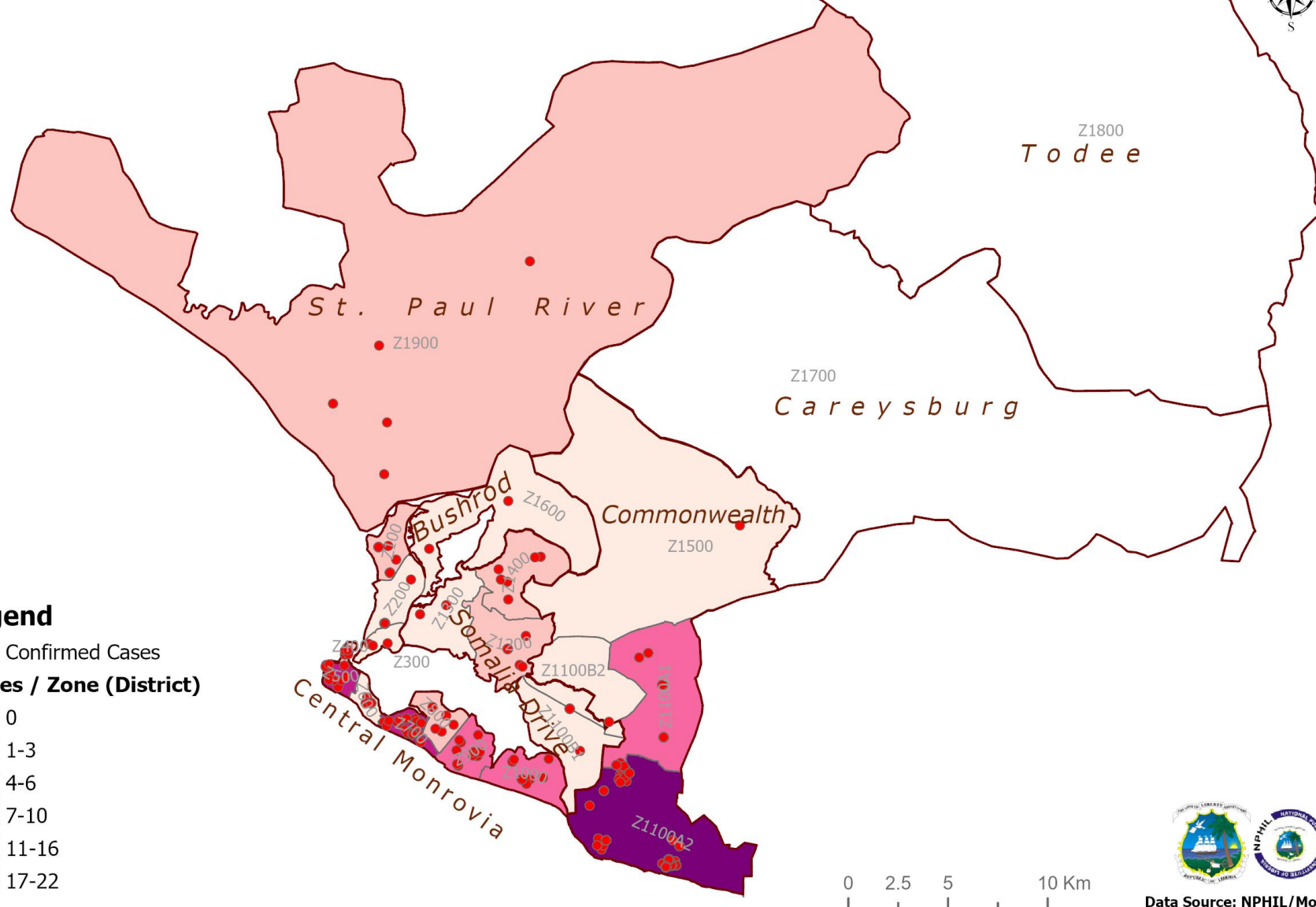


0 30 60 120 Km



Data Source: NPHIL/MoH

COVID-19 Cases in Montserrado, Liberia - April 26, 2020



Legend

- Confirmed Cases
- Cases / Zone (District)
- 0
- 1-3
- 4-6
- 7-10
- 11-16
- 17-22

0 2.5 5 10 Km

Precautionary Observation Centers (POC): Admission and Discharges

County	Precautionary Observation Centers				Moved to Treatment
	New admissions	Currently in POC	Daily Discharges	Cumulative Discharges (not including transferred)	
Grand Kru	0	15	0	0	0
Maryland	0	0	0	0	0
Montserrado	9	54	3	0	2
Nimba	1	54	0	0	0
River Gee	0	0	0	0	0
Sinoe	0	0	0	0	0
NATIONAL	10	123	3	0	2

Admissions, Currently in Treatment, and Discharges

Treatment Unit	COVID-19 Treatment Units				Available Bed Occupancy (%)
	New admissions	Discharges	Cumulative Discharges	Currently in treatment	
14 Military Hospital	2	2	30	72*	65.5
Rally Time Hospital Grand Kru	0	0	0	1	33.3
Jackson F. Doe Hospital, Nimba	0	0	0	0	0
Pleebo Health Center, Maryland	0	0	0	1	0
River Gee	0	0	0	0	0
F. J. Grant Hospital, Sinoe	0	0	0	1	20%
Total	2	2	30	75	

*68 confirmed patients + 4 special (NON-COVID-19) cases in 14-Military Hospital

Laboratory Samples Evaluated

Laboratory	Total	New Positive	Repeat Positive	Initial Negative	Repeat Test Negative	Indeterminate
LIBR	68	9	1	46	10	2

Contact Tracing Summary

Number of Contacts line listed and monitored as of 26 April 2020

	Cumulative	Montserrado*	Margibi	Maryland	Grand Kru	Nimba	Sinoe
Total contacts line listed	1790 (83 new)	1283	66	32	86	260	64
Number of health workers as contacts	370 (64 new)	256	54	15	0	20	15
Contacts became a case	48 (0 new)	47	0	0	1	0	0
Contacts completed 14 days	1074 (112 new)	936	0	0	0	138	0
Contacts under follow up	676 (83 new)	307	66	32	86	122	64

**Data reconciliation is currently ongoing in Montserrado thereby leading to incomplete information on the county record. The national team is closely working with the county to resolve on the completion of the data cleaning*

Thank you for Listening