



Liberia COVID-19 Daily Sitrep 59 (13th May 2020)

Summary of COVID-19 Cases by Reporting County, Liberia, 16 Mar – 13 May 2020

County	DAILY REPORT					CUMULATIVE CASES
	New Suspected and High Risk Cases			Laboratory Confirmed Cases	Confirmed Cases on Contact List	
	Suspect	Risk	Total			
Gbarpolu	0	0	0	1	0	6
Grand Kru	0	0	0	0	0	1
Margibi	0	0	0	0	0	13
Maryland	0	0	0	0	0	1
Montserrado	0	0	0	1	0	186
Nimba	1	0	1	0	0	6
River Gee	0	0	0	0	0	1
Sinoe	0	0	0	0	0	1
NATIONAL	1	0	1	2	0	215

Demographic Breakdown (Gender & Age) of Confirmed COVID-19 Cases (March 16 – May 13, 2020)

County	<15 years		15 - 34		35 - 54		55+		All ages		Total Confirm
	M	F	M	F	M	F	M	F	M	F	
Gbarpolu	1	1	0	0	1	1	1	1	3	3	6
Grand Kru	0	0	1	0	0	0	0	0	1	0	1
Margibi	0	0	0	2	2	3	2	4	4	9	13
Maryland	0	0	1	0	0	0	0	0	1	0	1
Montserrado	9	9	30	20	58	20	28	12	125	61	186
Nimba	0	0	0	0	3	2	1	0	4	2	6
River Gee	0	0	0	0	1	0	0	0	1	0	1
Sinoe	0	0	0	0	1	0	0	0	1	0	1
National	10	10	32	22	66	26	32	17	140	75	215

Demographic Breakdown (Gender & Age) of Confirmed COVID-19 Deaths (March 16 – May 13, 2020)

County	<15 years		15 - 34		35 - 54		55+		All ages		Total Confirmed
	M	F	M	F	M	F	M	F	M	F	
Gbarpolu	0	0	0	0	1	0	0	0	1	0	1
Grand Kru	0	0	0	0	0	0	0	0	0	0	0
Margibi	0	0	0	0	0	0	0	1	0	1	1
Maryland	0	0	0	0	0	0	0	0	0	0	0
Montserrado	0	0	0	0	6	3	5	1	11	4	15
Nimba	0	0	0	0	1	1	1	0	2	1	3
River Gee	0	0	0	0	0	0	0	0	0	0	0
Sinoe	0	0	0	0	0	0	0	0	0	0	0
National	0	0	0	0	8	4	6	2	14	6	20

Summary of COVID-19 Deaths by Reporting County, Liberia, 16 Mar – 13 May 2020

County	DAILY REPORT								CUMULATIVE DEATHS
	New Suspected Deaths	Laboratory Confirmed Deaths						Confirmed Deaths on Contact List	
		COVID-19 Treatment Unit	Total in COVID-19 Treatment Unit	Health Facility	Total in Health Facility	Community	Total in Community		
Gbarpolu	0	0	0	0	1	0	0	0	1
Grand Kru	0	0	0	0	0	0	0	0	0
Maryland	0	0	0	0	0	0	0	0	0
Margibi	0	0	0	0	1	0	0	0	1
Montserrado	0	0	1	0	3	0	11	0	15
Nimba	0	0	0	0	2	0	1	0	3
River Gee	0	0	0	0	0	0	0	0	0
Sinoe	0	0	0	0	0	0	0	0	0
NATIONAL	0	0	1	0	7	0	12	0	20

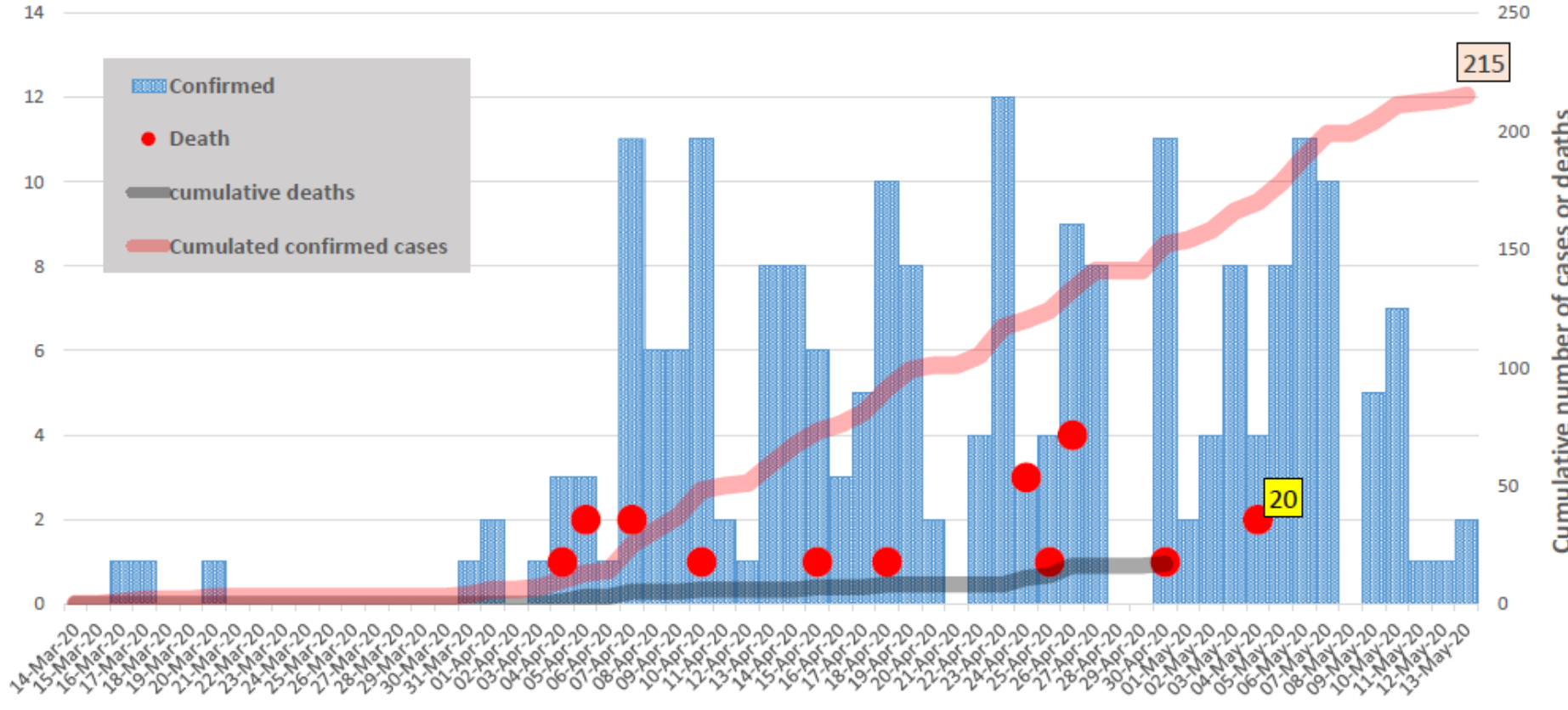
Daily and Cumulative Healthcare Worker (HCW) COVID-19 Cases and Deaths by County, Liberia, 16 Mar – 13 May 2020

County	DAILY REPORT						CUMULATIVE CASES (ALIVE & DEAD)	
	New Suspected & High Risk Cases (Alive)			New Suspect Death	Laboratory Confirmed Cases	Confirmed Cases on Contact List	Confirmed	Deaths
	Suspect	High Risk	Total					
Gbarpolu	0	0	0	0	0	0	0	0
Grand Kru	0	0	0	0	0	0	0	0
Margibi	0	0	0	0	0	0	8	1
Maryland	0	0	0	0	0	0	0	0
Montserrado	0	0	0	0	0	0	34	1
Nimba	0	0	0	0	0	0	0	0
River Gee	0	0	0	0	0	0	0	0
Sinoe	0	0	0	0	0	0	0	0
NATIONAL	0	0	0	0	0	0	42	2

Cadre Cases and Deaths by Health Care Workers (16 March – 13 May)

Health Care Worker Cadre	Montserratado		Margibi		Nimba		River Gee		Sinoe		Grand Kru		Gbarpolu		National (Total)	
	Cases	Deaths	Cases	Deaths	Cases	Deaths	Cases	Deaths	Cases	Deaths	Cases	Deaths	Cases	Deaths	Cases	Deaths
Doctors	5	0	0	0	0	0	0	0	0	0	0	0	0	0	5	0
Pharmacists	1	0	0	0	0	0	0	0	0	0	0	0	0	0	1	0
Nurses	15	1	2	0	0	0	0	0	0	0	0	0	0	0	17	1
Radiologist	1	0	0	0	0	0	0	0	0	0	0	0	0	0	1	0
Physician Assistants	0	0	0	0	0	0	0	0	0	0	0	0	0	0	0	0
Lab Technician	3	0	1	0	0	0	0	0	0	0	0	0	0	0	4	0
Environmental Health Technicians	6	0	0	0	0	0	0	0	0	0	0	0	0	0	6	0
Microbiologist	1	0	0	0	0	0	0	0	0	0	0	0	0	0	1	0
Epidemiologist	1	0	0	0	0	0	0	0	0	0	0	0	0	0	1	0
Dieticians	0	0	5	1	0	0	0	0	0	0	0	0	0	0	5	1
Psychosocial Worker	1	0	0	0	0	0	0	0	0	0	0	0	0	0	1	0
Total:	34	1	8	1	0	0	0	0	0	0	0	0	0	0	42	2

EPI-Curve of Confirmed Cases and Deaths

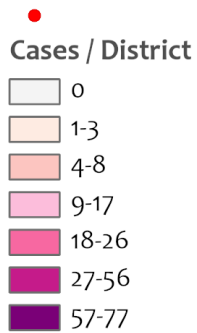


COVID-19 Cases in Liberia - May 13, 2020



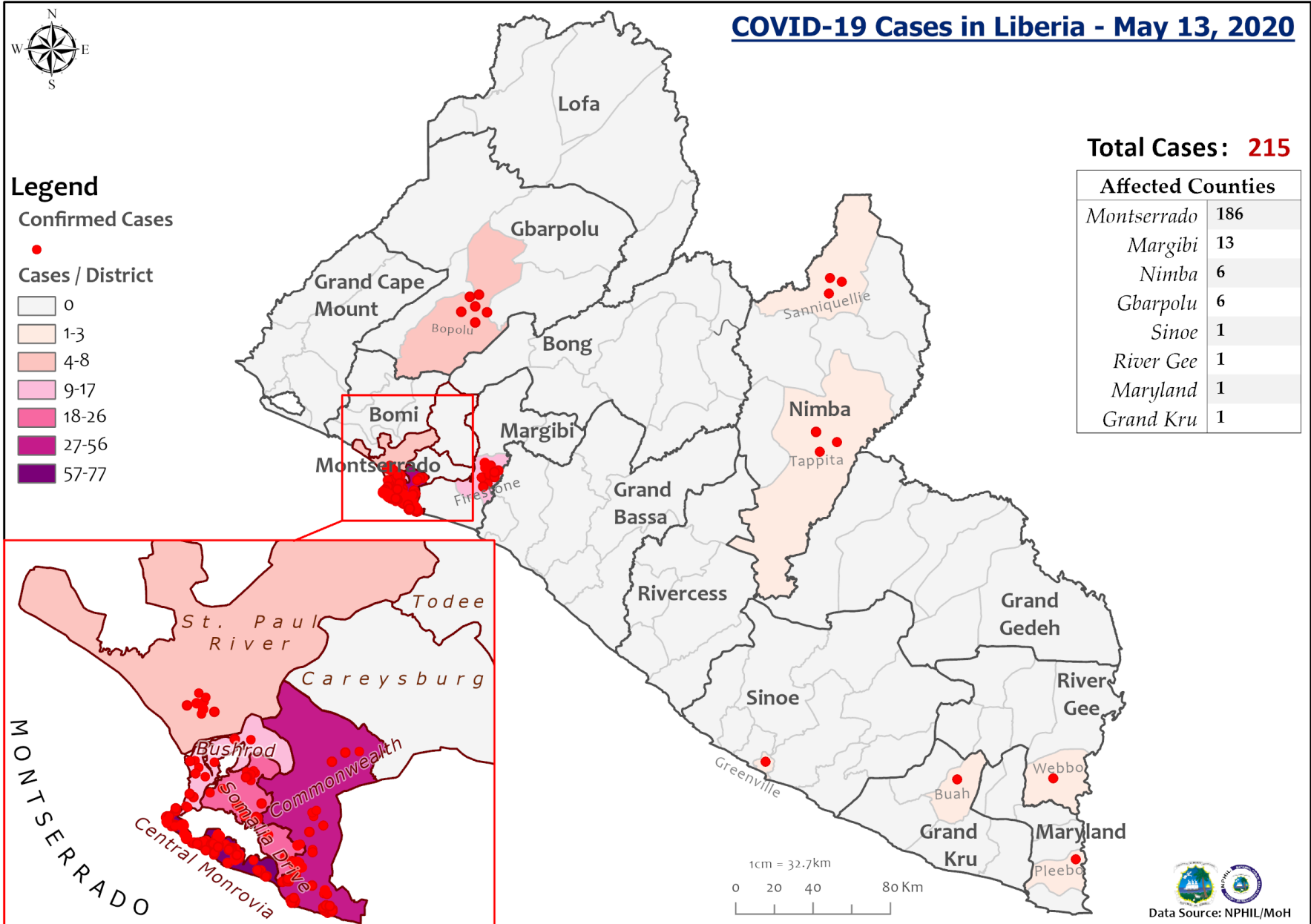
Legend

Confirmed Cases



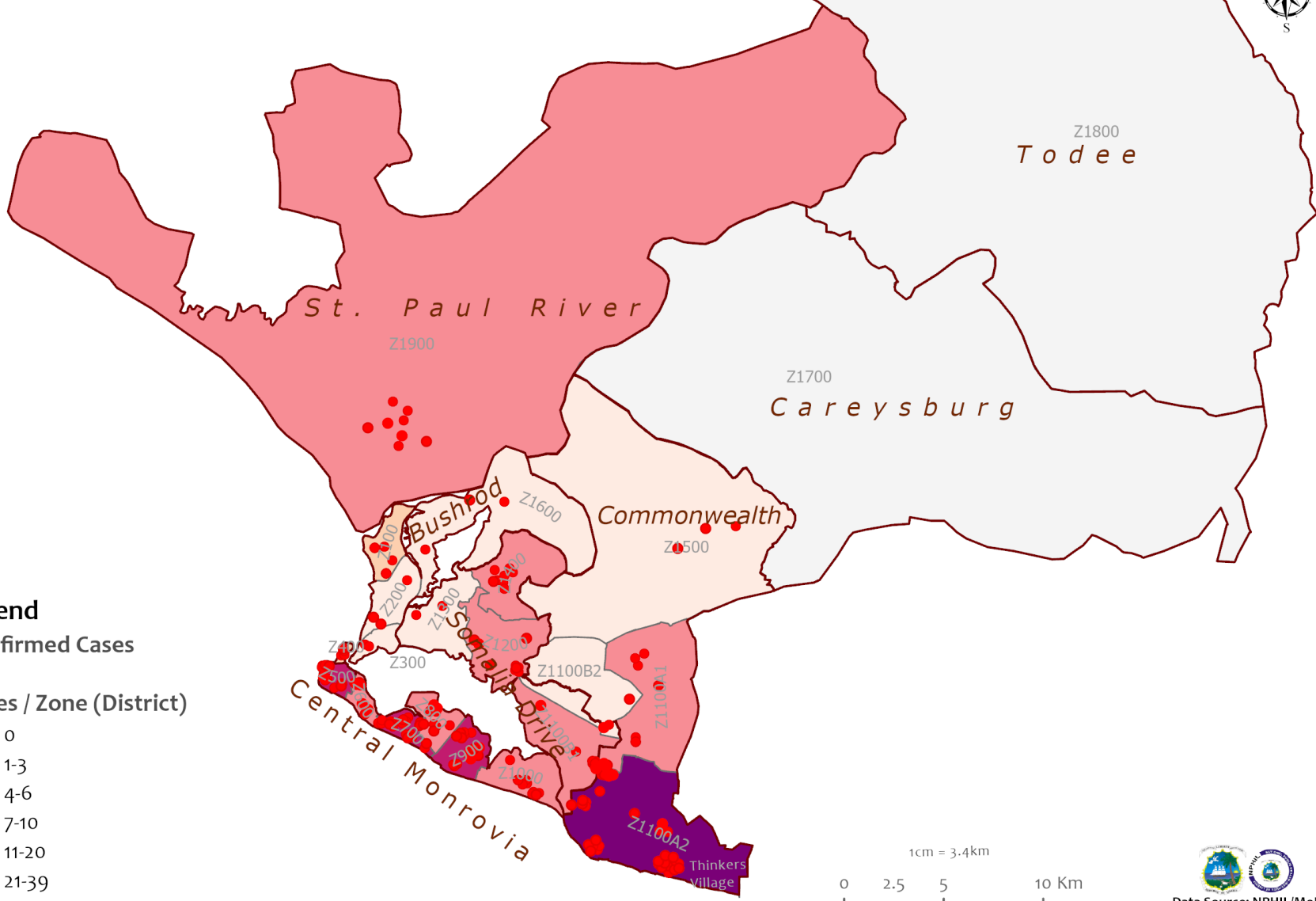
Total Cases: 215

Affected Counties	
Montserrado	186
Margibi	13
Nimba	6
Gbarpolu	6
Sinoe	1
River Gee	1
Maryland	1
Grand Kru	1



Data Source: NPHIL/MoH

COVID-19 Cases in Montserrado, Liberia - May 13, 2020

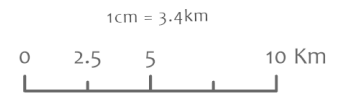


Legend

Confirmed Cases

Cases / Zone (District)

- 0
- 1-3
- 4-6
- 7-10
- 11-20
- 21-39



Data Source: NPHIL/MoH

Precautionary Observation Centers (POC): Admission and Discharges

County	Precautionary Observation Centers				Moved to Treatment
	New admissions	Currently in POC	Daily Discharges	Cumulative Discharges (not including transferred)	
Gbarpolu	0	0	0	0	0
Grand Kru	0	0	0	22	0
Margibi	0	0	0	0	0
Maryland	0	23	0	0	0
Montserrado	0	7	0	58	0
Nimba*	0	13	0	5	0
River Gee	0	0	0	0	0
Sinoe	0	22	0	82	0
NATIONAL	0	65	0	167	0

**45 high risk contacts are being monitored outside of Precautionary Observation Center and currently only 13 within POC*

Treatment Unit Daily Report – May 13, 2020

14 Military Hospital Treatment Unit						
New admissions	Daily Discharges	Cumulative Recoveries	Daily Deaths	Cumulative Deaths	*Currently in treatment	Available Bed Occupancy (%)
3	2	103	0	1	50	47.6%

Demographic Breakdown of Cases at 14 Military Hospital											
Total Census	Total Adult	Total Children	Total Female	Total Male	Total Confirm	Others	Pregnant	Children			
								<1	1-5	6-10	11-17
50	41	9	20	30	49	1	1	1	2	1	5

Admissions, Currently in Treatment, and Discharges

COVID-19 Treatment Units

Treatment Unit	New admissions	Discharges	Cumulative Discharges	Currently in Treatment Unit
Chief Jallahlone Hospital, Gbarpolu	0	0	0	0
Rally Time Hospital, Grand Kru	0	0	0	1
Jackson F. Doe Hospital, Nimba	0	0	0	1
Ganta Methodist Hospital, Nimba	0	0	1	0
Pleebo Health Center, Maryland	0	0	0	1
Fish Town Hospital, River Gee	0	0	0	1
F. J. Grant Hospital, Sinoe	0	1	1	0
Total	0	1	2	4

Laboratory Samples Evaluated – May 13, 2020

Laboratory	Total	New Positive	Repeat Positive	Initial Negative	Repeat Test Negative	Indeterminate
NPHRL	41	2	3	26	6	4
Total	41	2	3	26	6	4

Summary of COVID-19 Contact Tracing in Response Counties

County	New Contacts Line listed	Cumulative Contacts	No. of Health Care Workers as Contacts	Cumulative no. of Health Care Workers as contacts	Contacts became a case	Cumulative contacts that became a case	Contacts Completed 14 Days	Cumulative Contacts Completing 14 Days	Contacts Under Follow-up	Contacts lost to Follow-up
Montserrado	0	1659	0	256	0	54	0	1185	348	126
Margibi	0	158	0	80	0	11	0	74	84	0
Maryland	0	42	0	15	0	0	0	4	38	0
River Gee	0	72	0	1	0	0	0	0	72	0
Sinoe	0	104	0	15	0	0	0	12	92	0
Grand Kru	0	91	0	0	0	1	0	22	69	0
Gbarpolu	12	43	3	3	1	5	0	0	43	0
Nimba	0	398	0	24	0	0	0	266	132	0
National	12	2567	3	394	1	71	0	1563	878	126

**Data reconciliation is currently ongoing in Montserrado thereby leading to incomplete information on the county record. The national team is closely working with the county to resolve on the completion of the data cleaning*

Thank you for Listening