



# **Liberia COVID-19 Daily Sitrep 61 (15<sup>th</sup> May 2020)**

# Summary of COVID-19 Cases by Reporting County, Liberia, 16 Mar – 15 May 2020

County	DAILY REPORT					CUMULATIVE CASES
	New Suspected and High Risk Cases			Laboratory Confirmed Cases	Confirmed Cases on Contact List	
	Suspect	Risk	Total			
Gbarpolu	0	0	0	0	0	7
Grand Bassa	0	9	9	3	3	4
Grand Kru	0	0	0	0	0	1
Margibi	0	0	0	1	0	14
Maryland	0	0	0	0	0	1
Montserrado	0	0	0	0	0	188
Nimba	0	0	0	0	0	6
River Gee	0	0	0	0	0	1
Sinoe	0	0	0	0	0	1
<b>NATIONAL</b>	<b>0</b>	<b>9</b>	<b>9</b>	<b>4</b>	<b>3</b>	<b>223</b>

# Demographic Breakdown (Gender & Age) of Confirmed COVID-19 Cases (March 16 – May 15, 2020)

County	<15 years		15 - 34		35 - 54		55+		All ages		Total Confirm
	M	F	M	F	M	F	M	F	M	F	
Gbarpolu	1	2	0	0	1	1	1	1	3	4	7
Grand Bassa	0	0	1	3	0	0	0	0	1	3	4
Grand Kru	0	0	1	0	0	0	0	0	1	0	1
Margibi	0	0	0	3	2	3	2	4	4	10	14
Maryland	0	0	1	0	0	0	0	0	1	0	1
Montserrado	9	9	31	20	58	20	28	13	126	62	188
Nimba	0	0	0	0	3	2	1	0	4	2	6
River Gee	0	0	0	0	1	0	0	0	1	0	1
Sinoe	0	0	0	0	1	0	0	0	1	0	1
<b>National</b>	<b>10</b>	<b>11</b>	<b>34</b>	<b>26</b>	<b>66</b>	<b>26</b>	<b>32</b>	<b>18</b>	<b>142</b>	<b>81</b>	<b>223</b>

# Demographic Breakdown (Gender & Age) of Confirmed COVID-19 Deaths (March 16 – May 15, 2020)

County	<15 years		15 - 34		35 - 54		55+		All ages		Total Confirmed
	M	F	M	F	M	F	M	F	M	F	
Gbarpolu	0	0	0	0	1	0	0	0	1	0	1
Grand Kru	0	0	0	0	0	0	0	0	0	0	0
Margibi	0	0	0	0	0	0	0	1	0	1	1
Maryland	0	0	0	0	0	0	0	0	0	0	0
Montserrado	0	0	0	0	6	3	5	1	11	4	15
Nimba	0	0	0	0	1	1	1	0	2	1	3
River Gee	0	0	0	0	0	0	0	0	0	0	0
Sinoe	0	0	0	0	0	0	0	0	0	0	0
<b>National</b>	<b>0</b>	<b>0</b>	<b>0</b>	<b>0</b>	<b>8</b>	<b>4</b>	<b>6</b>	<b>2</b>	<b>14</b>	<b>6</b>	<b>20</b>

# Summary of COVID-19 Deaths by Reporting County, Liberia, 16 Mar – 15 May 2020

County	DAILY REPORT								CUMULATIVE DEATHS
	New Suspected Deaths	Laboratory Confirmed Deaths						Confirmed Deaths on Contact List	
		COVID-19 Treatment Unit	Total in COVID-19 Treatment Unit	Health Facility	Total in Health Facility	Community	Total in Community		
Gbarpolu	0	0	0	0	1	0	0	0	1
Grand Kru	0	0	0	0	0	0	0	0	0
Maryland	0	0	0	0	0	0	0	0	0
Margibi	0	0	0	0	1	0	0	0	1
Montserrado	0	0	1	0	3	0	11	0	15
Nimba	0	0	0	0	2	0	1	0	3
River Gee	0	0	0	0	0	0	0	0	0
Sinoe	0	0	0	0	0	0	0	0	0
<b>NATIONAL</b>	<b>0</b>	<b>0</b>	<b>1</b>	<b>0</b>	<b>7</b>	<b>0</b>	<b>12</b>	<b>0</b>	<b>20</b>

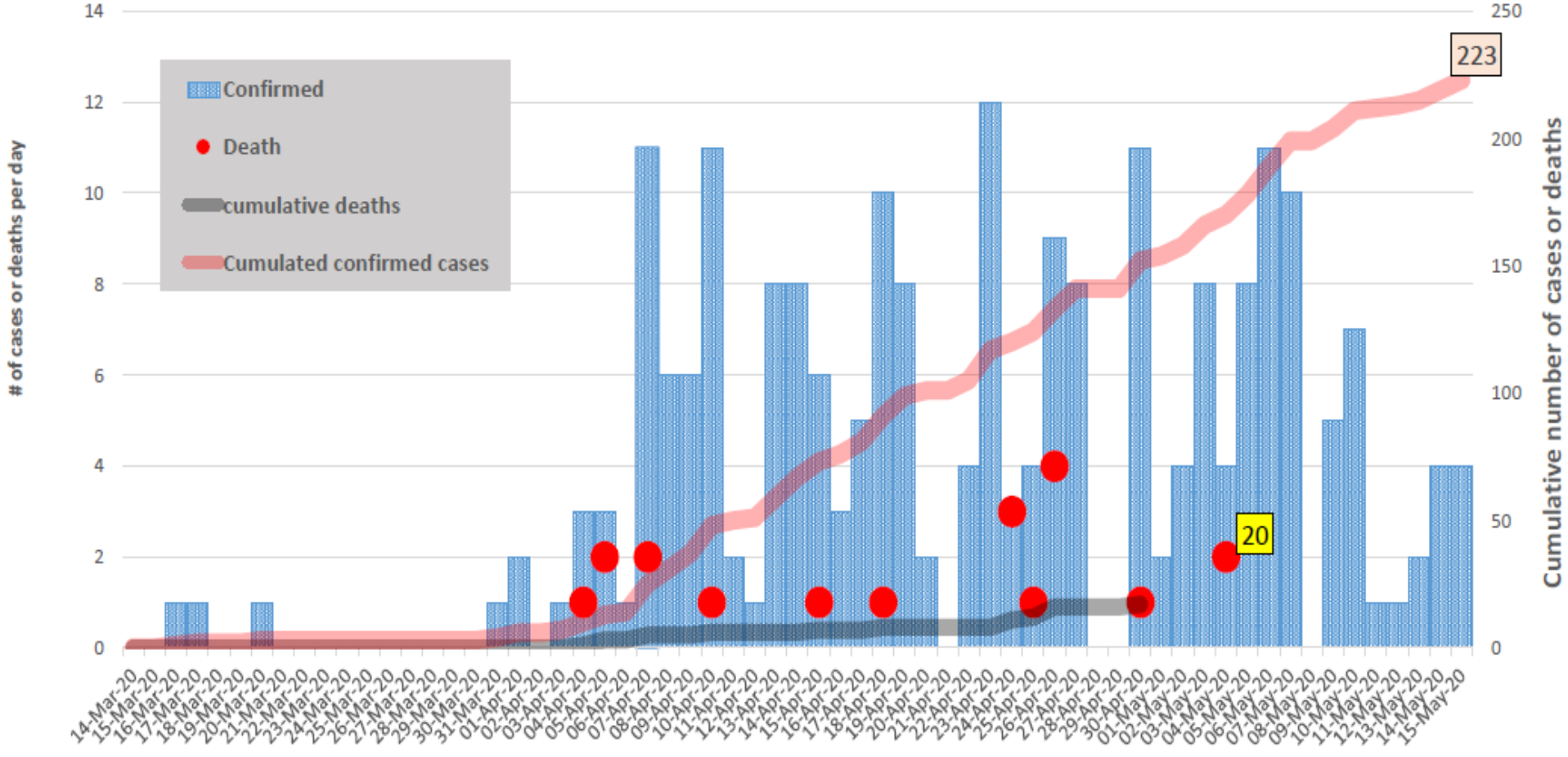
# Daily and Cumulative Healthcare Worker (HCW) COVID-19 Cases and Deaths by County, Liberia, 16 Mar – 15 May 2020

County	DAILY REPORT						CUMULATIVE CASES (ALIVE & DEAD)	
	New Suspected & High Risk Cases (Alive)			New Suspect Death	Laboratory Confirmed Cases	Confirmed Cases on Contact List	Confirmed	Deaths
	Suspect	High Risk	Total					
Gbarpolu	0	0	0	0	0	0	0	0
Grand Kru	0	0	0	0	0	0	0	0
Margibi	0	0	0	0	0	0	8	1
Maryland	0	0	0	0	0	0	0	0
Montserrado	0	0	0	0	0	0	34	1
Nimba	0	0	0	0	0	0	0	0
River Gee	0	0	0	0	0	0	0	0
Sinoe	0	0	0	0	0	0	0	0
<b>NATIONAL</b>	<b>0</b>	<b>0</b>	<b>0</b>	<b>0</b>	<b>0</b>	<b>0</b>	<b>42</b>	<b>2</b>

# Cadre Cases and Deaths by Health Care Workers (16 March – 15 May)

Health Care Worker Cadre	Montserratado		Margibi		Nimba		River Gee		Sinoe		Grand Kru		Gbarpolu		National (Total)	
	Cases	Deaths	Cases	Deaths	Cases	Deaths	Cases	Deaths	Cases	Deaths	Cases	Deaths	Cases	Deaths	Cases	Deaths
Doctors	5	0	0	0	0	0	0	0	0	0	0	0	0	0	5	0
Pharmacists	1	0	0	0	0	0	0	0	0	0	0	0	0	0	1	0
Nurses	15	1	2	0	0	0	0	0	0	0	0	0	0	0	17	1
Radiologist	1	0	0	0	0	0	0	0	0	0	0	0	0	0	1	0
Physician Assistants	0	0	0	0	0	0	0	0	0	0	0	0	0	0	0	0
Lab Technician	3	0	1	0	0	0	0	0	0	0	0	0	0	0	4	0
Environmental Health Technicians	6	0	0	0	0	0	0	0	0	0	0	0	0	0	6	0
Microbiologist	1	0	0	0	0	0	0	0	0	0	0	0	0	0	1	0
Epidemiologist	1	0	0	0	0	0	0	0	0	0	0	0	0	0	1	0
Dieticians	0	0	5	1	0	0	0	0	0	0	0	0	0	0	5	1
Psychosocial Worker	1	0	0	0	0	0	0	0	0	0	0	0	0	0	1	0
<b>Total:</b>	<b>34</b>	<b>1</b>	<b>8</b>	<b>1</b>	<b>0</b>	<b>0</b>	<b>0</b>	<b>0</b>	<b>0</b>	<b>0</b>	<b>0</b>	<b>0</b>	<b>0</b>	<b>0</b>	<b>42</b>	<b>2</b>

### EPI-Curve of Confirmed Cases and Deaths





# COVID-19 Cases in Liberia - May 15, 2020

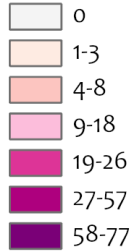


## Legend

Confirmed Cases



Cases / District



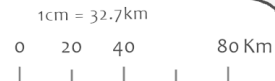
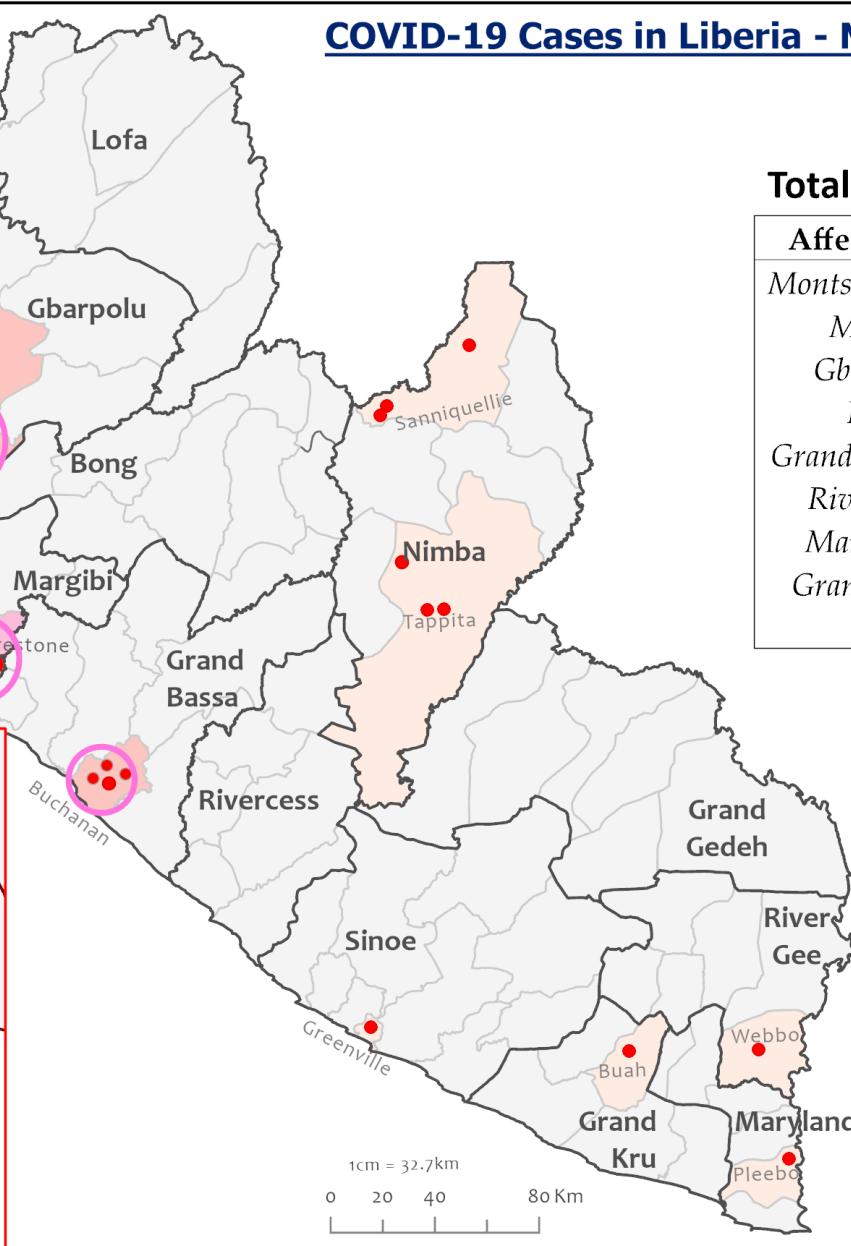
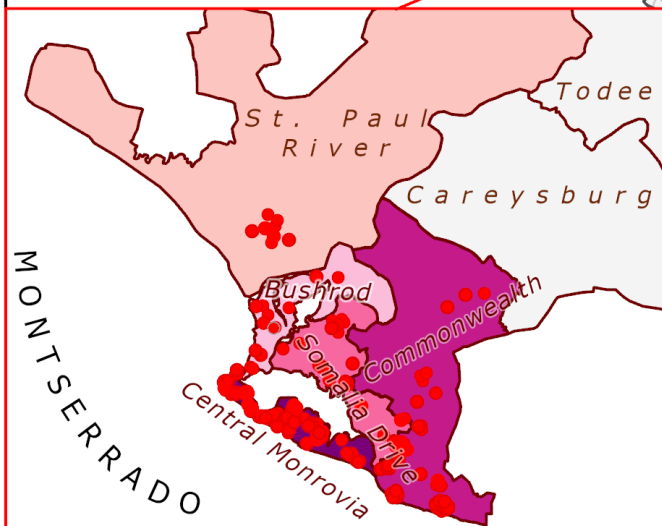
Clusters



**Total Cases: 223**

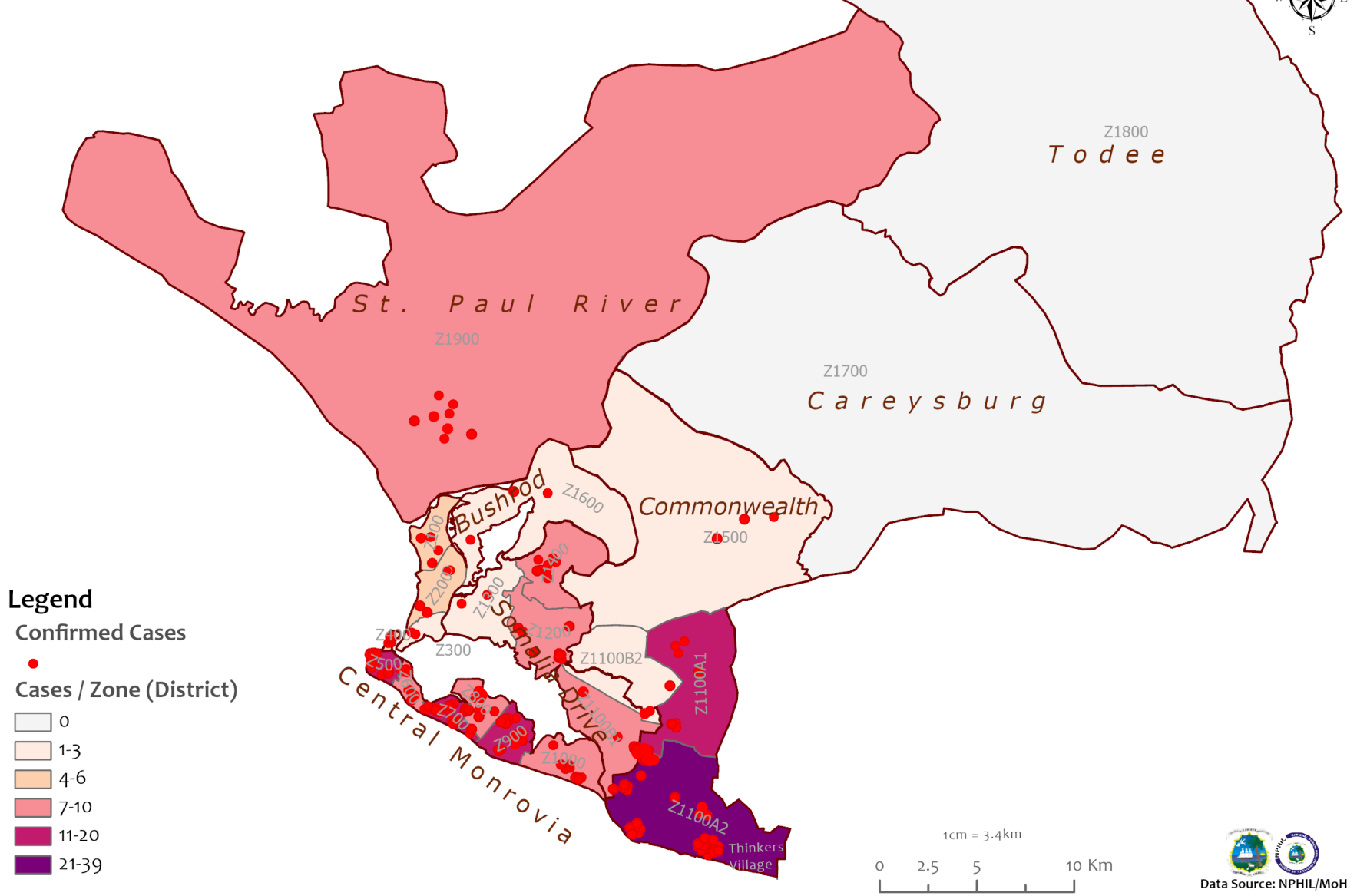
### Affected Counties

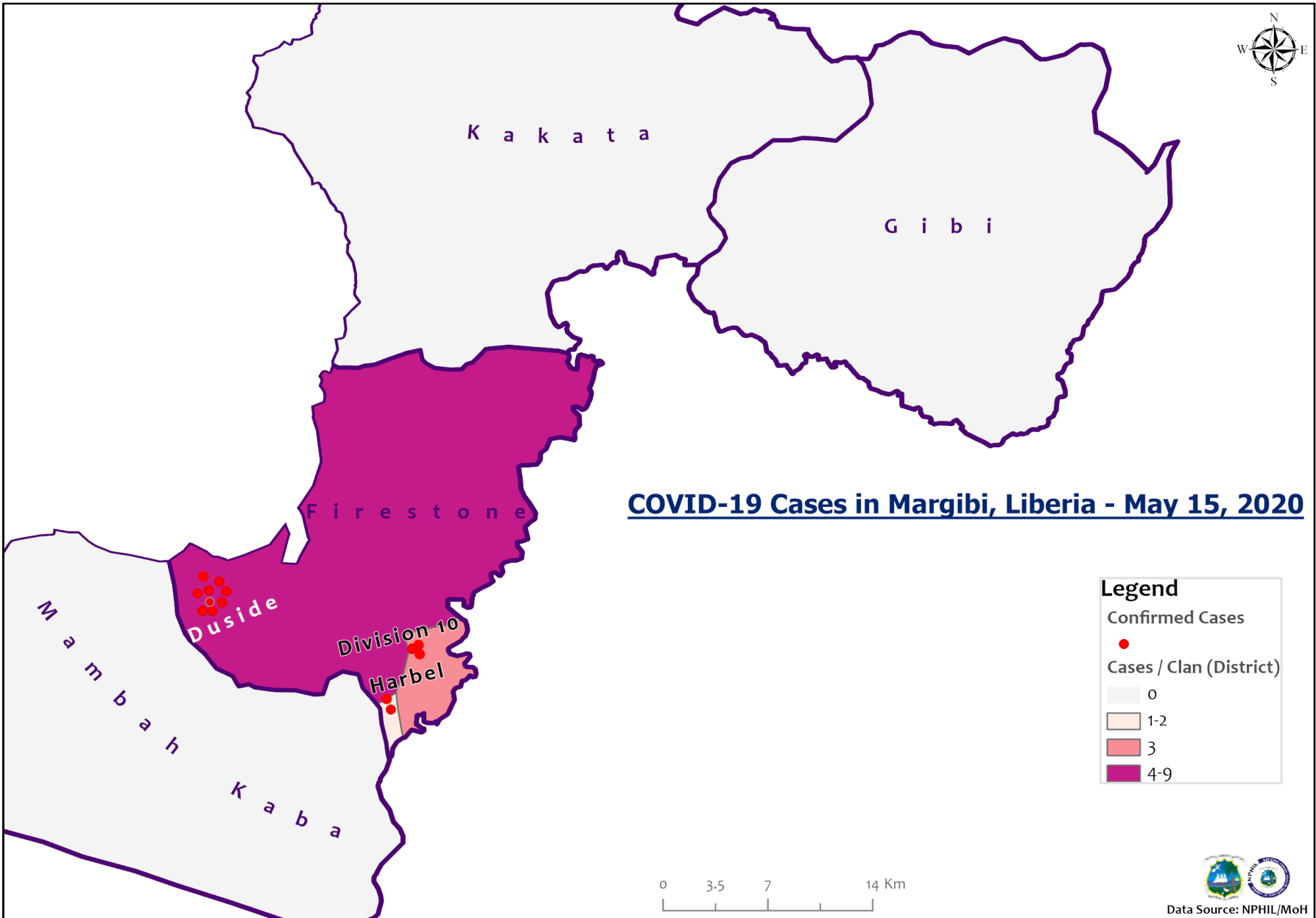
Montserrado	188
Margibi	14
Gbarpolu	7
Nimba	6
Grand Bassa	4
River Gee	1
Maryland	1
Grand Kru	1
Sinoe	1



Data Source: NPHI/MoH

# COVID-19 Cases in Montserrado, Liberia - May 15, 2020





**COVID-19 Cases in Margibi, Liberia - May 15, 2020**

**Legend**

Confirmed Cases

•

Cases / Clan (District)

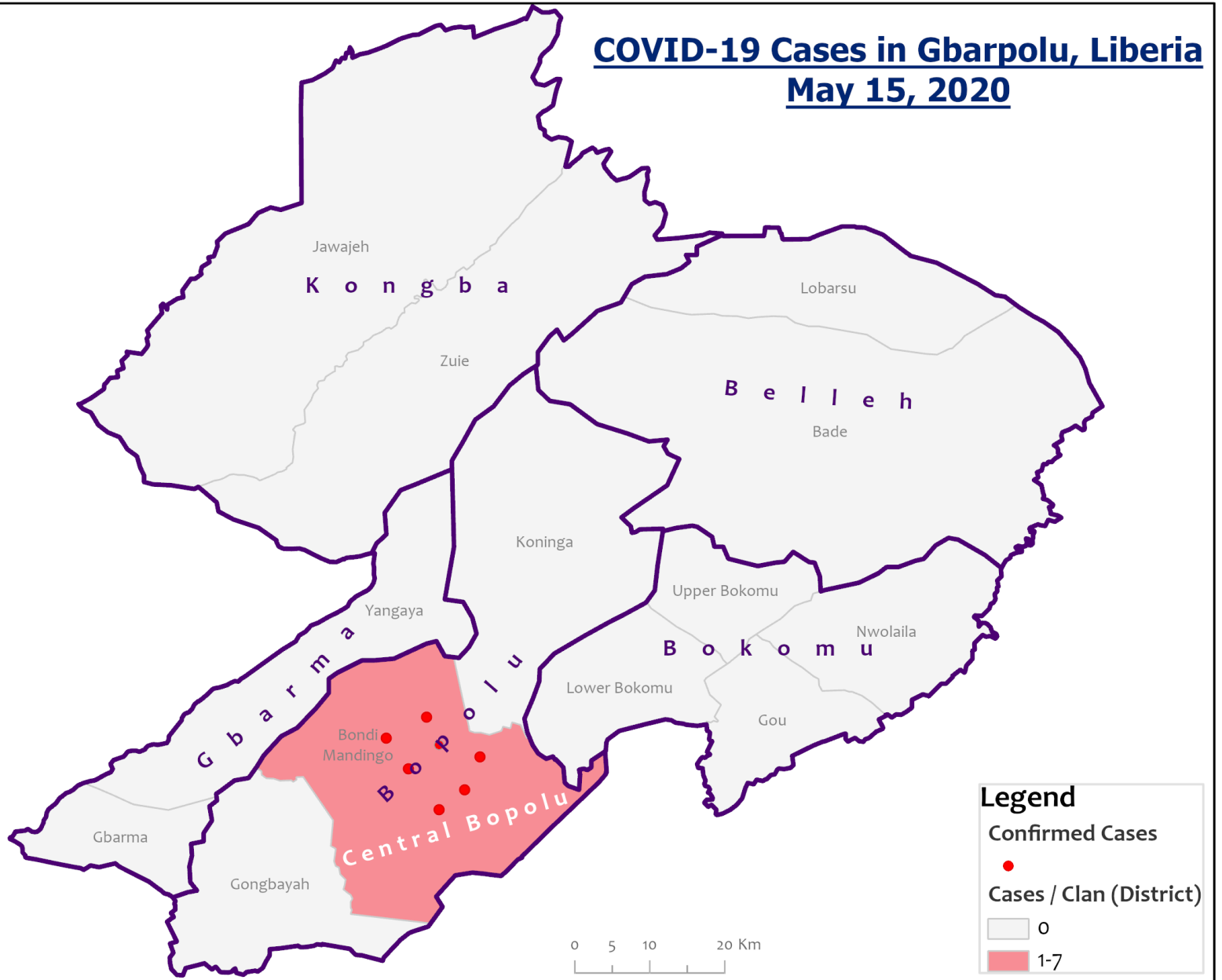
0
1-2
3
4-9



Data Source: NPHIL/MoH



# COVID-19 Cases in Gbarpolu, Liberia May 15, 2020



# Precautionary Observation Centers (POC): Admission and Discharges

County	Precautionary Observation Centers				Moved to Treatment
	New admissions	Currently in POC	Daily Discharges	Cumulative Discharges (not including transferred)	
Gbarpolu	0	0	0	0	5
Grand Bassa	0	0	0	0	0
Grand Kru	0	1	0	15	0
Margibi	0	0	0	0	0
Maryland	0	35	0	7	0
Montserrado	0	7	0	58	0
Nimba	0	3	0	14	0
River Gee	0	0	0	0	0
Sinoe	0	22	0	82	0
<b>NATIONAL</b>	<b>0</b>	<b>68</b>	<b>0</b>	<b>176</b>	<b>5</b>

# Treatment Unit Daily Report – May 15, 2020

14 Military Hospital Treatment Unit						
New admissions	Daily Discharges	Cumulative Recoveries	Daily Deaths	Cumulative Deaths	*Currently in treatment	Available Bed Occupancy (%)
1	6	112	0	1	43	40.9%

Demographic Breakdown of Cases at 14 Military Hospital											
Total Census	Total Adult	Total Children	Total Female	Total Male	Total Confirm	Others	Pregnant	Children			
								<1	1-5	6-10	11-17
43	34	9	18	25	42	1	1	1	2	1	5

\*42 confirmed cases + 1 special case = 43 total patients

# Admissions, Currently in Treatment, and Discharges

COVID-19 Treatment Units									
Treatment Unit	New admissions	Cumulative admissions	Discharges	Cumulative Discharges	Currently in Treatment Unit	Total Males	Total Females	0-35 yrs	36+ yrs
Chief Jallahlone Hospital, Gbarpolu	0	1	0	0	1	0	1	1	0
Rally Time Hospital, Grand Kru	0	1	0	1	0	1	0	0	1
Jackson F. Doe Hospital, Nimba	0	1	0	0	1	1	0	1	0
Ganta Methodist Hospital, Nimba	0	1	0	1	0	1	0	0	1
Pleebo Health Center, Maryland	0	1	0	0	1	1	0	1	0
Fish Town Hospital, River Gee	0	1	0	1	0	1	0	0	1
F. J. Grant Hospital, Sinoe	0	1	0	1	0	1	0	1	0
<b>Total</b>	<b>0</b>	<b>7</b>	<b>0</b>	<b>4</b>	<b>3</b>	<b>6</b>	<b>1</b>	<b>4</b>	<b>3</b>

## Laboratory Samples Evaluated – May 15, 2020

Laboratory	Total	New Positive	Repeat Positive	Initial Negative	Repeat Test Negative	Indeterminate
NPHRL	57	4	12	29	8	4
Total	57	4	12	29	8	4



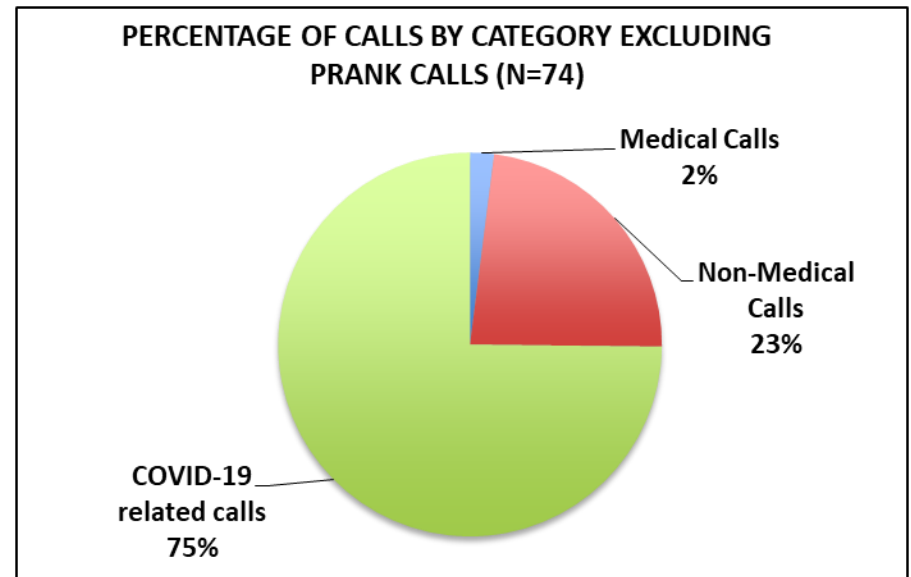
# Emergency Medical Services (May 4-10, 2020)

CASES	No.	SEX		AGES		Final Destinations					Pending
		M	F	0-45	46+	14 military	Palm spring poc	Du-port road poc	Executive INN	Jallah Memorial poc	Pending
<b>Suspected COVID-19</b>	4	3	1	4	0	0	0	0	0	4	0
<b>Confirmed COVID-19</b>	28	19	9	22	6	28	0	0	0	0	0
<b>Total</b>	32	22	10	28	6	28	0	0	0	4	0

# PHEOC Call Center Report (May 15, 2020 )

<b>CALLS AND TRIAGE from Hotline/Call Center-4455</b>	<b>Number</b>
Live calls	2
Repeat calls	0
Deaths reported	5
Repeat Deaths report/follow-up	3
Non-Medical Calls	61
Non-Medical Calls Repeat/Follow-up	3
Prank calls	328
<b>Total Calls</b>	<b>402</b>

<b>Calls by Category Excluding Prank (n=74)</b>	<b>Percentages</b>
Medical Calls	2
Non-Medical Calls	23
COVID-19 related calls	74.3



Thank you for Listening