



# **Liberia COVID-19 Daily Sitrep 62 (16<sup>th</sup> May 2020)**

# Summary of COVID-19 Cases by Reporting County, Liberia, 16 Mar – 16 May 2020

County	DAILY REPORT					CUMULATIVE CASES
	New Suspected and High Risk Cases			Laboratory Confirmed Cases	Confirmed Cases on Contact List	
	Suspect	Risk	Total			
Gbarpolu	0	0	0	0	0	7
Grand Bassa	0	0	0	0	0	4
Grand Kru	0	0	0	0	0	1
Margibi	0	0	0	2	0	16
Maryland	0	0	0	0	0	1
Montserrado	0	0	0	1	0	189
Nimba	0	0	0	0	0	6
River Gee	0	0	0	0	0	1
Sinoe	0	0	0	0	0	1
<b>NATIONAL</b>	<b>0</b>	<b>0</b>	<b>0</b>	<b>3</b>	<b>0</b>	<b>226</b>

# Demographic Breakdown (Gender & Age) of Confirmed COVID-19 Cases (March 16 – May 16, 2020)

County	<15 years		15 - 34		35 - 54		55+		All ages		Total Confirm
	M	F	M	F	M	F	M	F	M	F	
Gbarpolu	1	2	0	0	1	1	1	1	3	4	7
Grand Bassa	0	0	1	3	0	0	0	0	1	3	4
Grand Kru	0	0	1	0	0	0	0	0	1	0	1
Margibi	0	1	0	4	2	3	2	4	4	12	16
Maryland	0	0	1	0	0	0	0	0	1	0	1
Montserrado	9	9	32	20	58	20	28	13	127	62	189
Nimba	0	0	0	0	3	2	1	0	4	2	6
River Gee	0	0	0	0	1	0	0	0	1	0	1
Sinoe	0	0	0	0	1	0	0	0	1	0	1
<b>National</b>	<b>10</b>	<b>12</b>	<b>35</b>	<b>27</b>	<b>66</b>	<b>26</b>	<b>32</b>	<b>18</b>	<b>143</b>	<b>83</b>	<b>226</b>

# Demographic Breakdown (Gender & Age) of Confirmed COVID-19 Deaths (March 16 – May 16, 2020)

County	<15 years		15 - 34		35 - 54		55+		All ages		Total Confirmed
	M	F	M	F	M	F	M	F	M	F	
Gbarpolu	0	0	0	0	1	0	0	0	1	0	1
Grand Kru	0	0	0	0	0	0	0	0	0	0	0
Margibi	0	0	0	0	0	0	0	1	0	1	1
Maryland	0	0	0	0	0	0	0	0	0	0	0
Montserrado	0	0	0	0	7	3	5	1	12	4	16
Nimba	0	0	0	0	1	1	1	0	2	1	3
River Gee	0	0	0	0	0	0	0	0	0	0	0
Sinoe	0	0	0	0	0	0	0	0	0	0	0
<b>National</b>	<b>0</b>	<b>0</b>	<b>0</b>	<b>0</b>	<b>9</b>	<b>4</b>	<b>6</b>	<b>2</b>	<b>15</b>	<b>6</b>	<b>21</b>

# Summary of COVID-19 Deaths by Reporting County, Liberia, 16 Mar – 16 May 2020

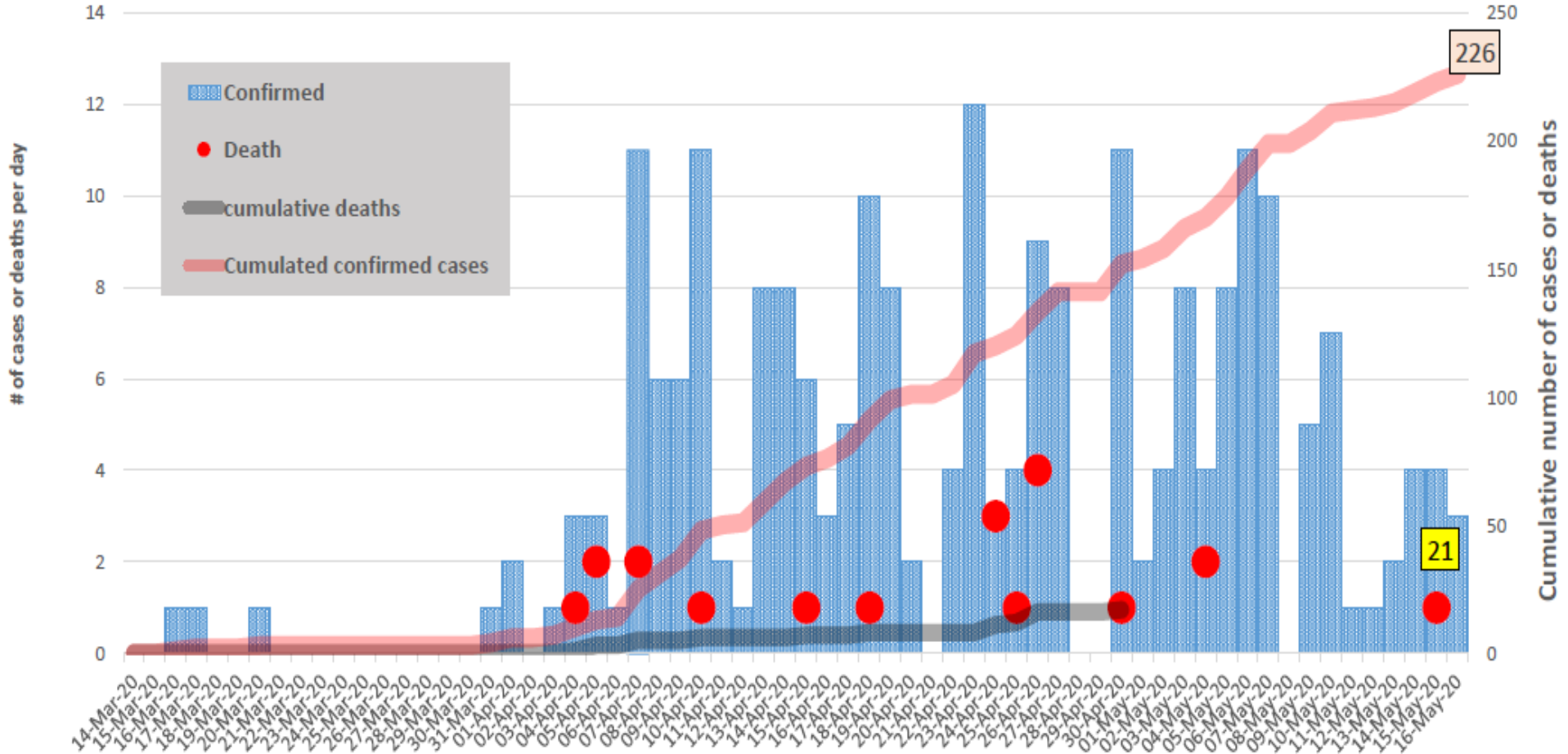
County	DAILY REPORT								CUMULATIVE DEATHS
	New Suspected Deaths	Laboratory Confirmed Deaths						Confirmed Deaths on Contact List	
		COVID-19 Treatment Unit	Total in COVID-19 Treatment Unit	Health Facility	Total in Health Facility	Community	Total in Community		
Gbarpolu	0	0	0	0	1	0	0	0	1
Grand Kru	0	0	0	0	0	0	0	0	0
Maryland	0	0	0	0	0	0	0	0	0
Margibi	0	0	0	0	1	0	0	0	1
Montserrado	0	0	1	0	4	0	11	0	16
Nimba	0	0	0	0	2	0	1	0	3
River Gee	0	0	0	0	0	0	0	0	0
Sinoe	0	0	0	0	0	0	0	0	0
<b>NATIONAL</b>	<b>0</b>	<b>0</b>	<b>1</b>	<b>0</b>	<b>8</b>	<b>0</b>	<b>12</b>	<b>0</b>	<b>21</b>



# Cadre Cases and Deaths by Health Care Workers (16 March – 16 May)

Health Care Worker Cadre	Cases	Deaths	Cases	Deaths	Cases	Deaths	Cases	Deaths	Cases	Deaths	Cases	Deaths	Cases	Deaths	Cases	Deaths	Cases	Deaths
Doctors	5	0	0	0	0	0	0	0	0	0	0	0	0	0	0	0	5	0
Pharmacists	1	0	0	0	0	0	0	0	0	0	0	0	0	0	0	0	1	0
Nurses	15	1	2	0	0	0	0	0	0	0	0	0	1	0	0	0	18	1
Radiologist	1	0	0	0	0	0	0	0	0	0	0	0	0	0	0	0	1	0
Physician Assistants	0	0	0	0	0	0	0	0	0	0	0	0	0	0	0	0	0	0
Lab Technician	3	0	1	0	0	0	0	0	0	0	0	0	0	0	0	0	4	0
Environmental Health Technicians	6	0	0	0	0	0	0	0	0	0	0	0	0	0	0	0	6	0
Microbiologist	1	0	0	0	0	0	0	0	0	0	0	0	0	0	0	0	1	0
Epidemiologist	1	0	0	0	0	0	0	0	0	0	0	0	0	0	0	0	1	0
Dieticians	0	0	5	1	0	0	0	0	0	0	0	0	0	0	0	0	5	1
Psychosocial Worker	1	0	0	0	0	0	0	0	0	0	0	0	0	0	0	0	1	0
<b>Total:</b>	<b>34</b>	<b>1</b>	<b>8</b>	<b>1</b>	<b>0</b>	<b>0</b>	<b>0</b>	<b>0</b>	<b>0</b>	<b>0</b>	<b>0</b>	<b>0</b>	<b>1</b>	<b>0</b>	<b>0</b>	<b>0</b>	<b>43</b>	<b>2</b>

### EPI-Curve of Confirmed Cases and Deaths



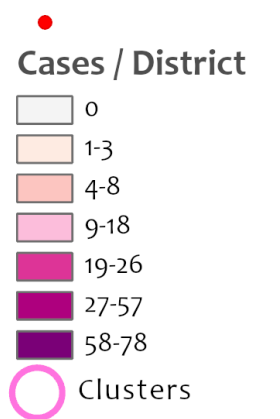


# COVID-19 Cases in Liberia - May 16, 2020



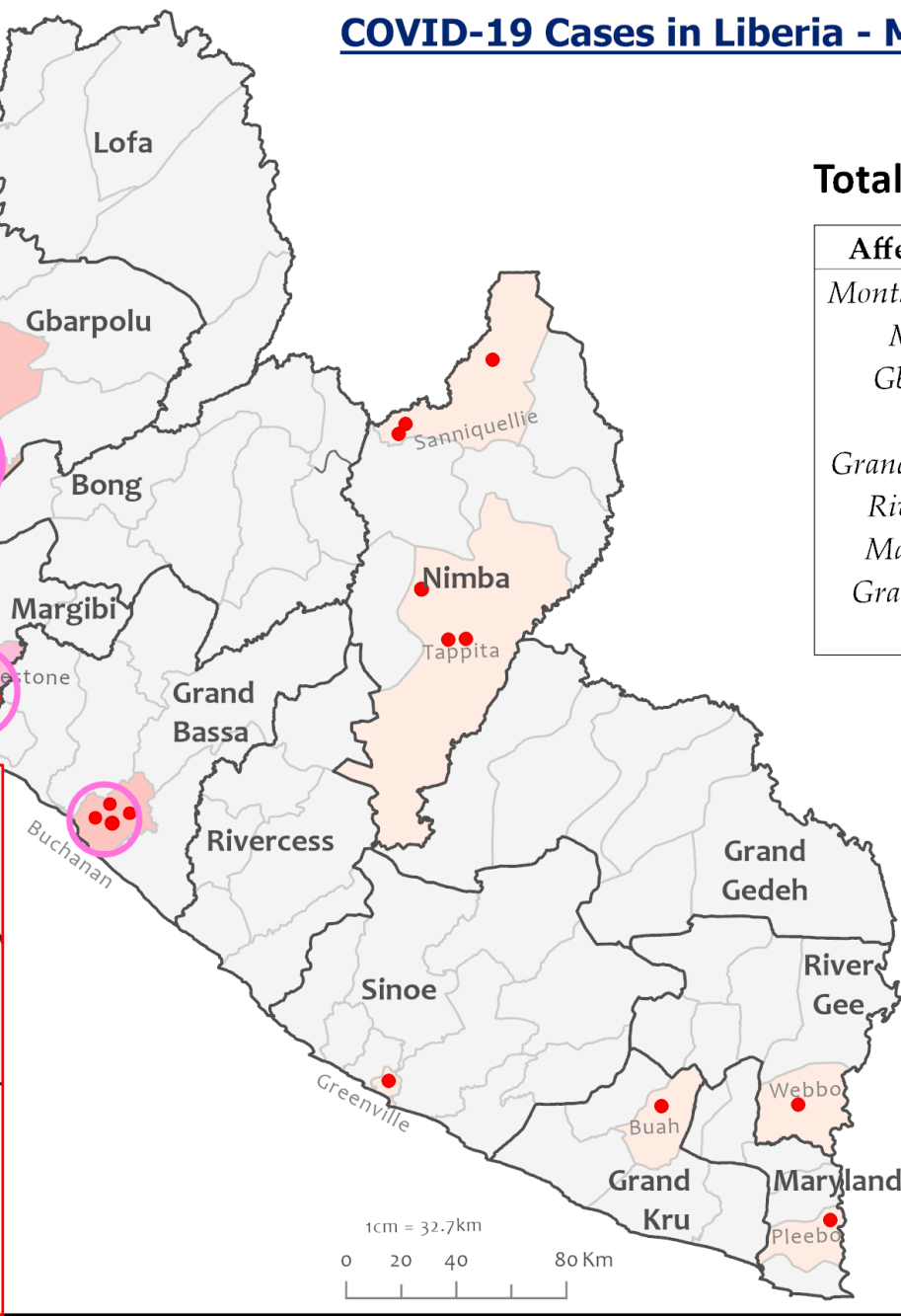
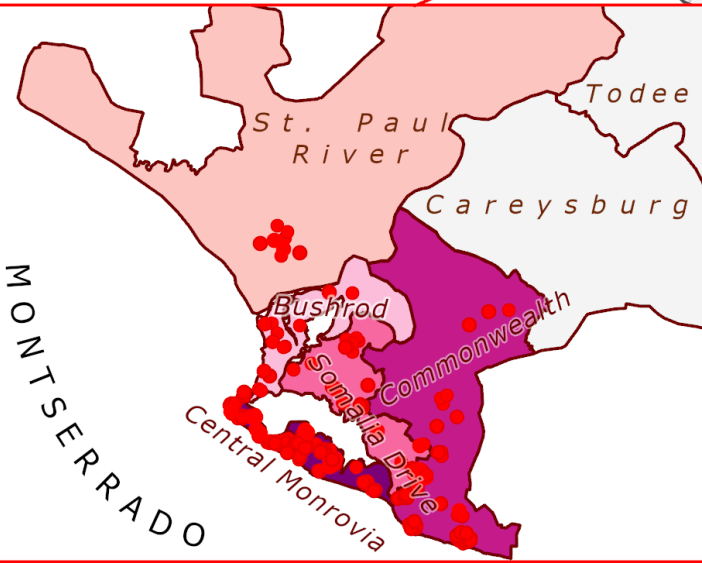
## Legend

Confirmed Cases



**Total Cases: 226**

Affected Counties	
Montserrado	189
Margibi	16
Gbarpolu	7
Nimba	6
Grand Bassa	4
River Gee	1
Maryland	1
Grand Kru	1
Sinoe	1



# COVID-19 Cases in Montserrado, Liberia - May 16, 2020



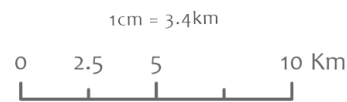
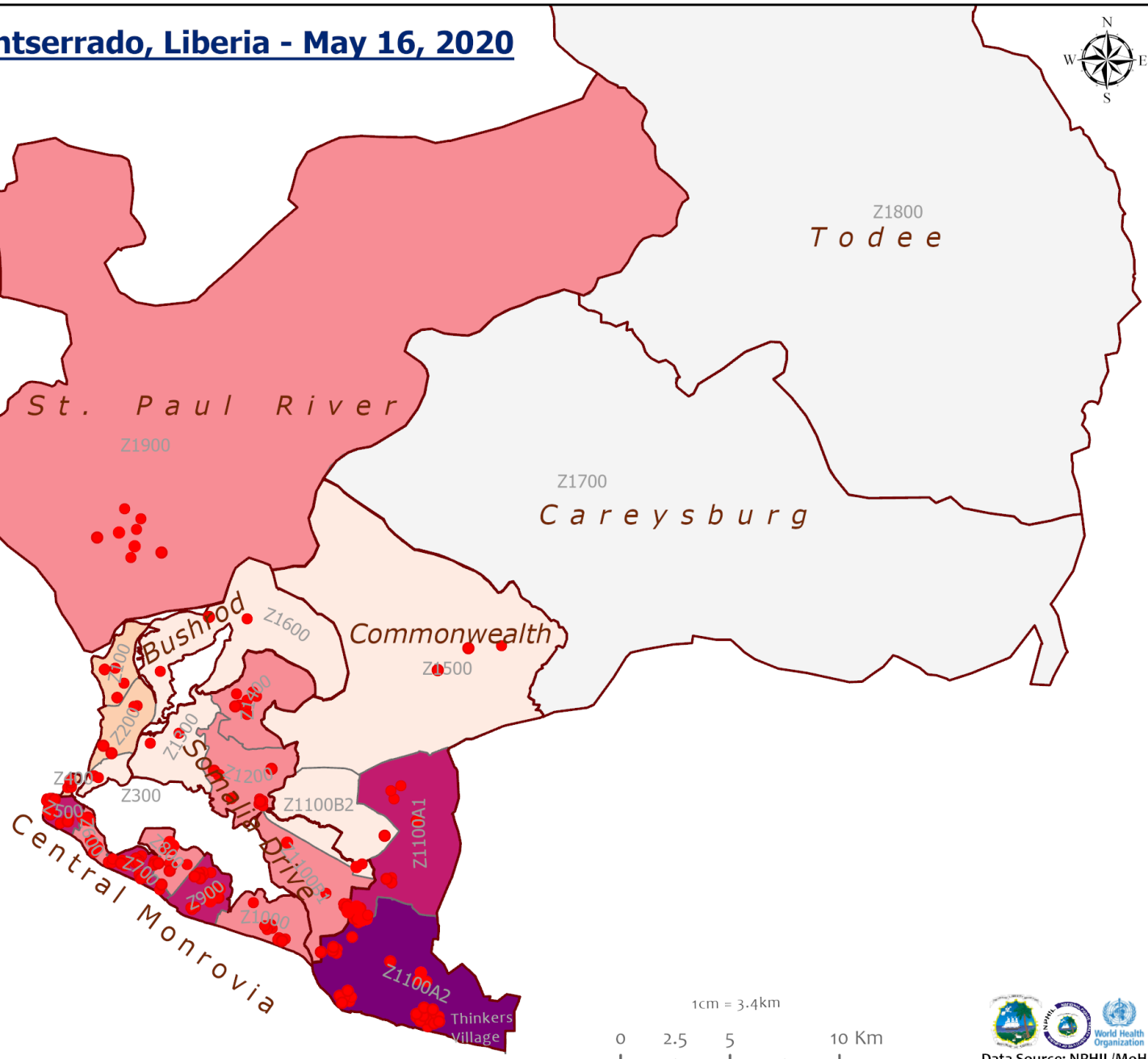
**Legend**

**Confirmed Cases**

●

**Cases / Zone (District)**

- 0
- 1-3
- 4-6
- 7-10
- 11-20
- 21-39

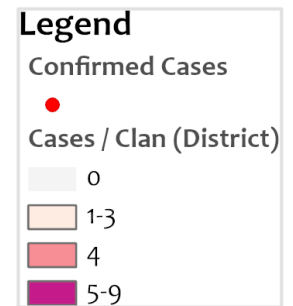




K a k a t a

G i b i

## COVID-19 Cases in Margibi, Liberia - May 16, 2020



Duside

Division 10

Harbel

M a m b a h

K a b a

E i f e s t o n e

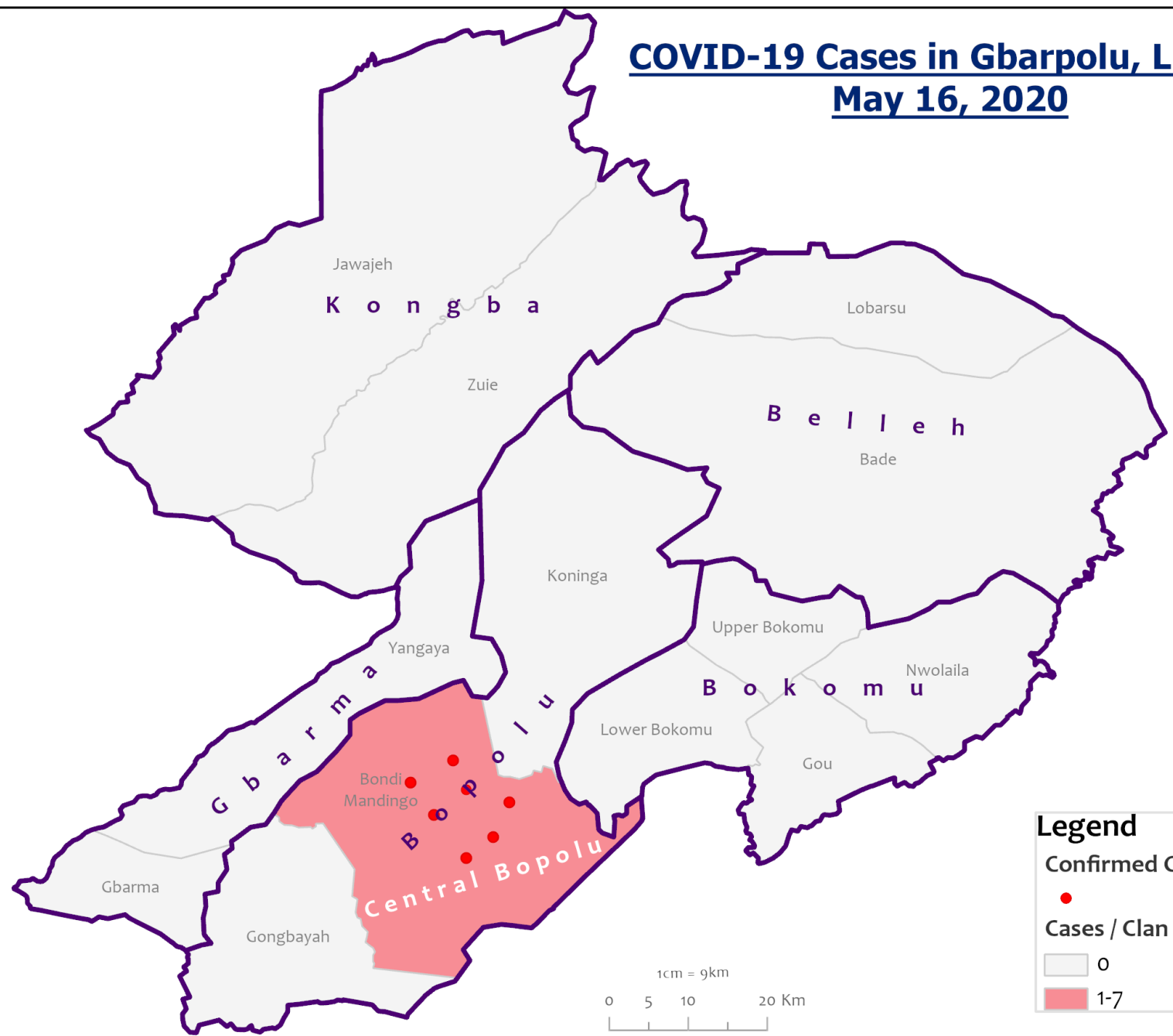
1cm = 4.2km



Data Source: NPHIL/MoH



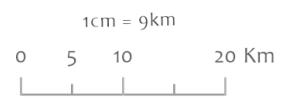
# COVID-19 Cases in Gbarpolu, Liberia May 16, 2020



**Legend**

Confirmed Cases

- Cases / Clan (District)
- 0
- 1-7



# Precautionary Observation Centers (POC): Admission and Discharges

County	Precautionary Observation Centers				Moved to Treatment
	New admissions	Currently in POC	Daily Discharges	Cumulative Discharges (not including transferred)	
Gbarpolu	0	0	0	0	5
Grand Bassa	0	0	0	0	0
Grand Kru	0	0	0	16	0
Margibi	0	0	0	0	0
Maryland	0	35	0	7	0
Montserrado	0	7	0	58	0
Nimba	0	3	0	14	0
River Gee	0	0	0	0	0
Sinoe	0	21	0	83	0
<b>NATIONAL</b>	<b>0</b>	<b>66</b>	<b>0</b>	<b>178</b>	<b>5</b>

# Treatment Unit Daily Report – May 16, 2020

14 Military Hospital Treatment Unit						
New admissions	Daily Discharges	Cumulative Recoveries	Daily Deaths	Cumulative Deaths	*Currently in treatment	Available Bed Occupancy (%)
0	4	116	0	1	39	37.1%

Demographic Breakdown of Cases at 14 Military Hospital											
Total Census	Total Adult	Total Children	Total Female	Total Male	Total Confirm	Others	Pregnant	Children			
								<1	1-5	6-10	11-17
39	31	8	14	25	38	1	1	1	1	1	5

\*38 confirmed cases + 1 special case = 39 total patients

# Admissions, Currently in Treatment, and Discharges

COVID-19 Treatment Units									
Treatment Unit	New admissions	Cumulative admissions	Discharges	Cumulative Discharges	Currently in Treatment Unit	Total Males	Total Females	0-35 yrs	36+ yrs
Chief Jallahlone Hospital, Gbarpolu	0	1	0	0	1	0	1	1	0
Rally Time Hospital, Grand Kru	0	1	0	1	0	1	0	0	1
Jackson F. Doe Hospital, Nimba	0	1	0	0	1	1	0	1	0
Ganta Methodist Hospital, Nimba	0	1	0	1	0	1	0	0	1
Pleebo Health Center, Maryland	0	1	0	0	1	1	0	1	0
Fish Town Hospital, River Gee	0	1	0	1	0	1	0	0	1
F. J. Grant Hospital, Sinoe	0	1	0	1	0	1	0	1	0
<b>Total</b>	<b>0</b>	<b>7</b>	<b>0</b>	<b>4</b>	<b>3</b>	<b>6</b>	<b>1</b>	<b>4</b>	<b>3</b>

## Laboratory Samples Evaluated – May 16, 2020

<b>Laboratory</b>	<b>Total</b>	<b>New Positive</b>	<b>Repeat Positive</b>	<b>Initial Negative</b>	<b>Repeat Test Negative</b>	<b>Indeterminate</b>
<b>NPHRL</b>	60	3	0	54	1	2
<b>Total</b>	<b>60</b>	<b>3</b>	<b>0</b>	<b>54</b>	<b>1</b>	<b>2</b>



Thank you for Listening