



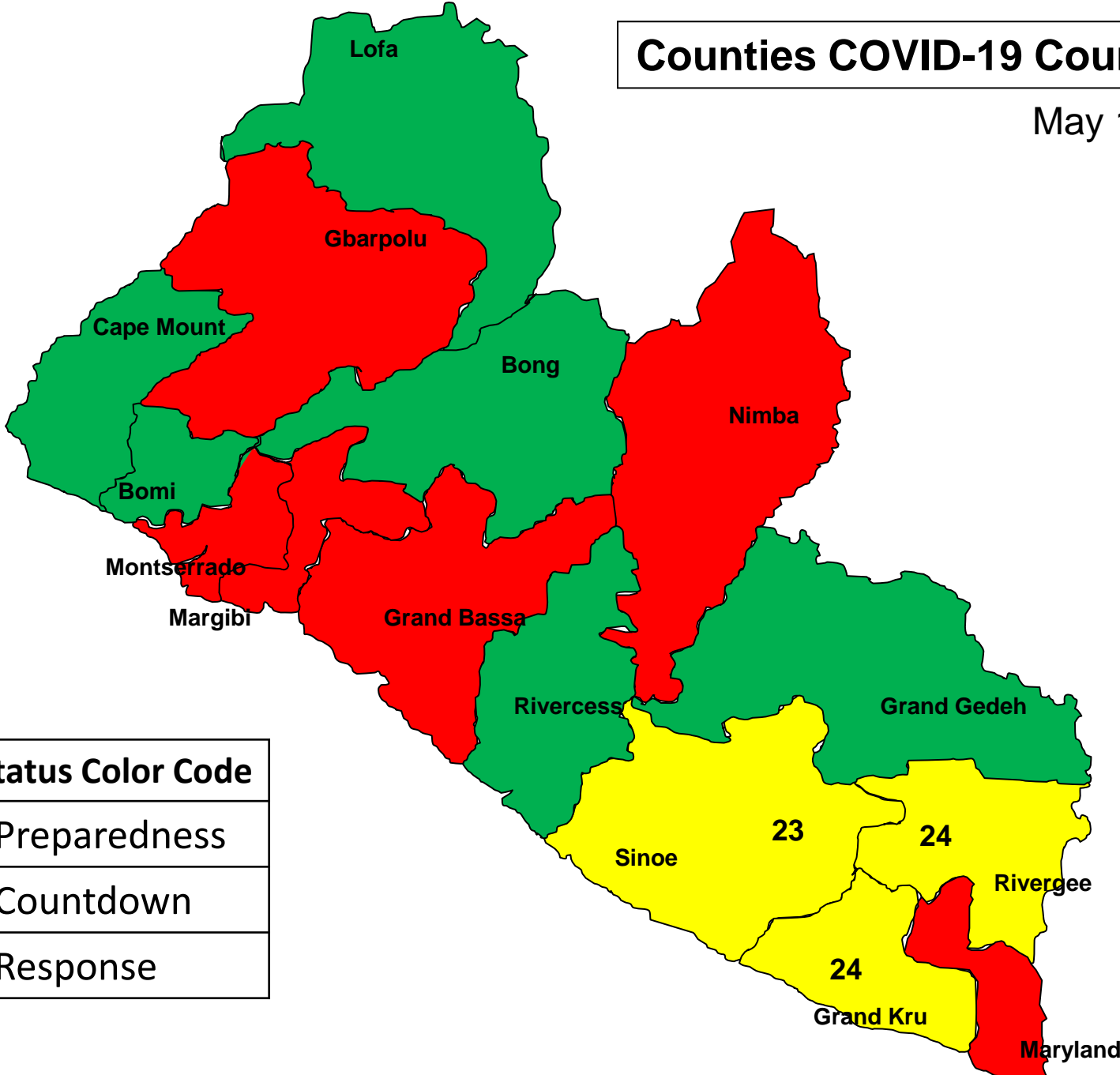
Liberia COVID-19 Daily Sitrep 63 (17th May 2020)

Summary of COVID-19 Cases by Reporting County, Liberia, 16 Mar – 17 May 2020

County	DAILY REPORT					CUMULATIVE CASES
	New Suspected and High Risk Cases			Laboratory Confirmed Cases	Confirmed Cases on Contact List	
	Suspect	Risk	Total			
Gbarpolu	0	0	0	0	0	7
Grand Bassa	0	0	0	0	0	4
Grand Kru	0	0	0	0	0	1
Margibi	0	0	0	0	0	16
Maryland	0	0	0	0	0	1
Montserrado	0	0	0	3	0	192
Nimba	0	0	0	0	0	6
River Gee	0	0	0	0	0	1
Sinoe	0	0	0	0	0	1
NATIONAL	0	0	0	3	0	229

Counties COVID-19 Countdown

May 17, 2020



County Status Color Code

Green	Preparedness
Yellow	Countdown
Red	Response

Demographic Breakdown (Gender & Age) of Confirmed COVID-19 Cases (March 16 – May 17, 2020)

County	<15 years		15 - 34		35 - 54		55+		All ages		Total Confirm
	M	F	M	F	M	F	M	F	M	F	
Gbarpolu	1	2	0	0	1	1	1	1	3	4	7
Grand Bassa	0	0	1	3	0	0	0	0	1	3	4
Grand Kru	0	0	1	0	0	0	0	0	1	0	1
Margibi	0	1	0	4	2	3	2	4	4	12	16
Maryland	0	0	1	0	0	0	0	0	1	0	1
Montserrado	9	9	33	20	58	20	30	13	130	62	192
Nimba	0	0	0	0	3	2	1	0	4	2	6
River Gee	0	0	0	0	1	0	0	0	1	0	1
Sinoe	0	0	0	0	1	0	0	0	1	0	1
National	10	12	36	27	66	26	34	18	146	83	229

Demographic Breakdown (Gender & Age) of Confirmed COVID-19 Deaths (March 16 – May 17, 2020)

County	<15 years		15 - 34		35 - 54		55+		All ages		Total Confirmed
	M	F	M	F	M	F	M	F	M	F	
Gbarpolu	0	0	0	0	1	0	1	0	2	0	2
Grand Kru	0	0	0	0	0	0	0	0	0	0	0
Margibi	0	0	0	0	0	0	0	1	0	1	1
Maryland	0	0	0	0	0	0	0	0	0	0	0
Montserrado	0	0	0	0	7	3	5	1	12	4	16
Nimba	0	0	0	0	1	1	1	0	2	1	3
River Gee	0	0	0	0	0	0	0	0	0	0	0
Sinoe	0	0	0	0	0	0	0	0	0	0	0
National	0	0	0	0	9	4	7	2	16	6	22

Summary of COVID-19 Deaths by Reporting County, Liberia, 16 Mar – 17 May 2020

County	DAILY REPORT								CUMULATIVE DEATHS
	New Suspected Deaths	Laboratory Confirmed Deaths						Confirmed Deaths on Contact List	
		COVID-19 Treatment Unit	Total in COVID-19 Treatment Unit	Health Facility	Total in Health Facility	Community	Total in Community		
Gbarpolu	0	1	1	0	1	0	0	1	2
Grand Kru	0	0	0	0	0	0	0	0	0
Maryland	0	0	0	0	0	0	0	0	0
Margibi	0	0	0	0	1	0	0	0	1
Montserrado	0	0	1	0	4	0	11	0	16
Nimba	0	0	0	0	2	0	1	0	3
River Gee	0	0	0	0	0	0	0	0	0
Sinoe	0	0	0	0	0	0	0	0	0
NATIONAL	0	0	2	0	8	0	12	1	22

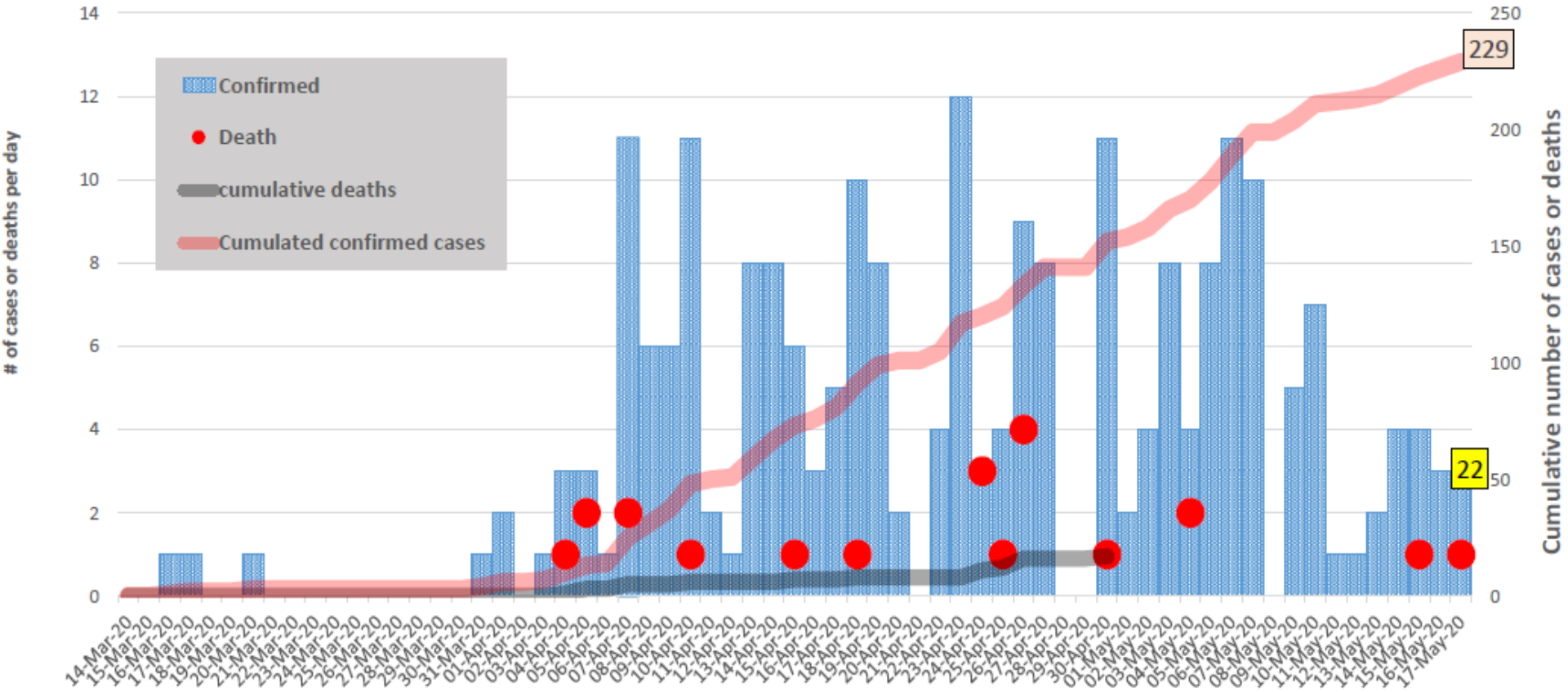
Daily and Cumulative Healthcare Worker (HCW) COVID-19 Cases and Deaths by County, Liberia, 16 Mar – 17 May 2020

County	DAILY REPORT							CUMULATIVE CASES (ALIVE & DEAD)	
	New Suspected & High Risk Cases (Alive)			New Suspect Death	Laboratory Confirmed Cases	Confirmed Cases on Contact List	Confirmed	Deaths	
	Suspect	High Risk	Total						
Gbarpolu	0	0	0	0	0	0	1	1	
Grand Bassa	0	0	0	0	0	0	0	0	
Grand Kru	0	0	0	0	0	0	0	0	
Margibi	0	0	0	0	0	0	8	1	
Maryland	0	0	0	0	0	0	0	0	
Montserrado	0	0	0	0	0	0	34	1	
Nimba	0	0	0	0	0	0	0	0	
River Gee	0	0	0	0	0	0	0	0	
Sinoe	0	0	0	0	0	0	0	0	
NATIONAL	0	0	0	0	0	0	43	3	

Cadre Cases and Deaths by Health Care Workers (16 March – 17 May)

Health Care Worker Cadre	Montserratado		Margibi		Nimba		River Gee		Sinoe		Grand Kru		Gbarpolu		Grand Bassa		National (Total)	
	Cases	Deaths	Cases	Deaths	Cases	Deaths	Cases	Deaths	Cases	Deaths	Cases	Deaths	Cases	Deaths	Cases	Deaths	Cases	Deaths
Doctors	5	0	0	0	0	0	0	0	0	0	0	0	0	0	0	0	5	0
Pharmacists	1	0	0	0	0	0	0	0	0	0	0	0	0	0	0	0	1	0
Nurses	15	1	2	0	0	0	0	0	0	0	0	0	1	1	0	0	18	2
Radiologist	1	0	0	0	0	0	0	0	0	0	0	0	0	0	0	0	1	0
Physician Assistants	0	0	0	0	0	0	0	0	0	0	0	0	0	0	0	0	0	0
Lab Technician	3	0	1	0	0	0	0	0	0	0	0	0	0	0	0	0	4	0
Environmental Health Technicians	6	0	0	0	0	0	0	0	0	0	0	0	0	0	0	0	6	0
Microbiologist	1	0	0	0	0	0	0	0	0	0	0	0	0	0	0	0	1	0
Epidemiologist	1	0	0	0	0	0	0	0	0	0	0	0	0	0	0	0	1	0
Dieticians	0	0	5	1	0	0	0	0	0	0	0	0	0	0	0	0	5	1
Psychosocial Worker	1	0	0	0	0	0	0	0	0	0	0	0	0	0	0	0	1	0
Total:	34	1	8	1	0	0	0	0	0	0	0	0	1	1	0	0	43	3

EPI-Curve of Confirmed Cases and Deaths

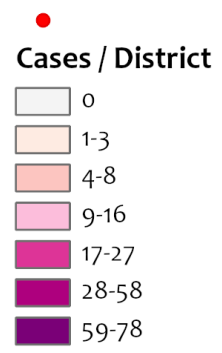


COVID-19 Cases in Liberia - May 17, 2020



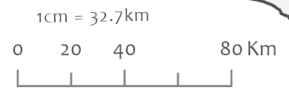
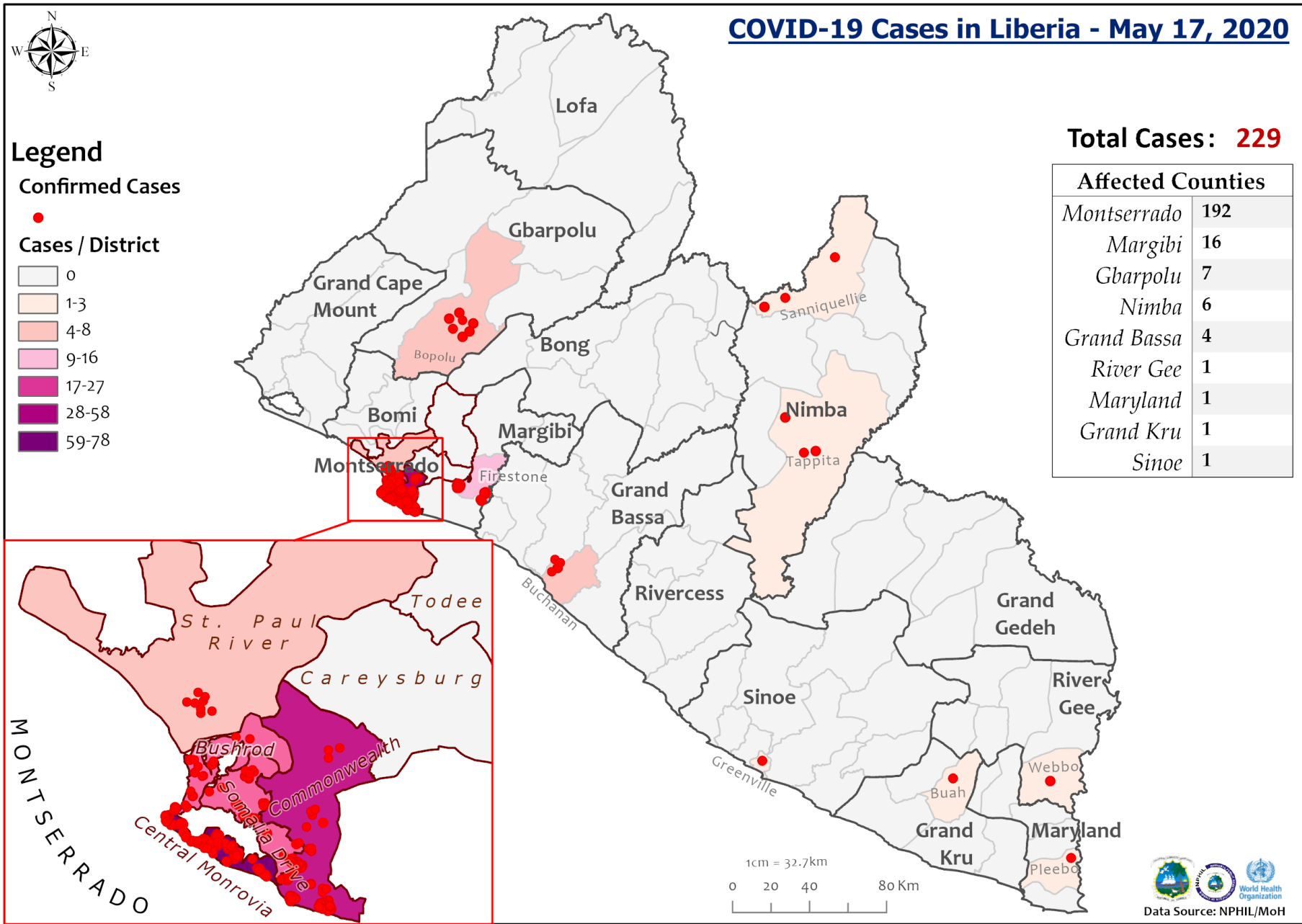
Legend

Confirmed Cases

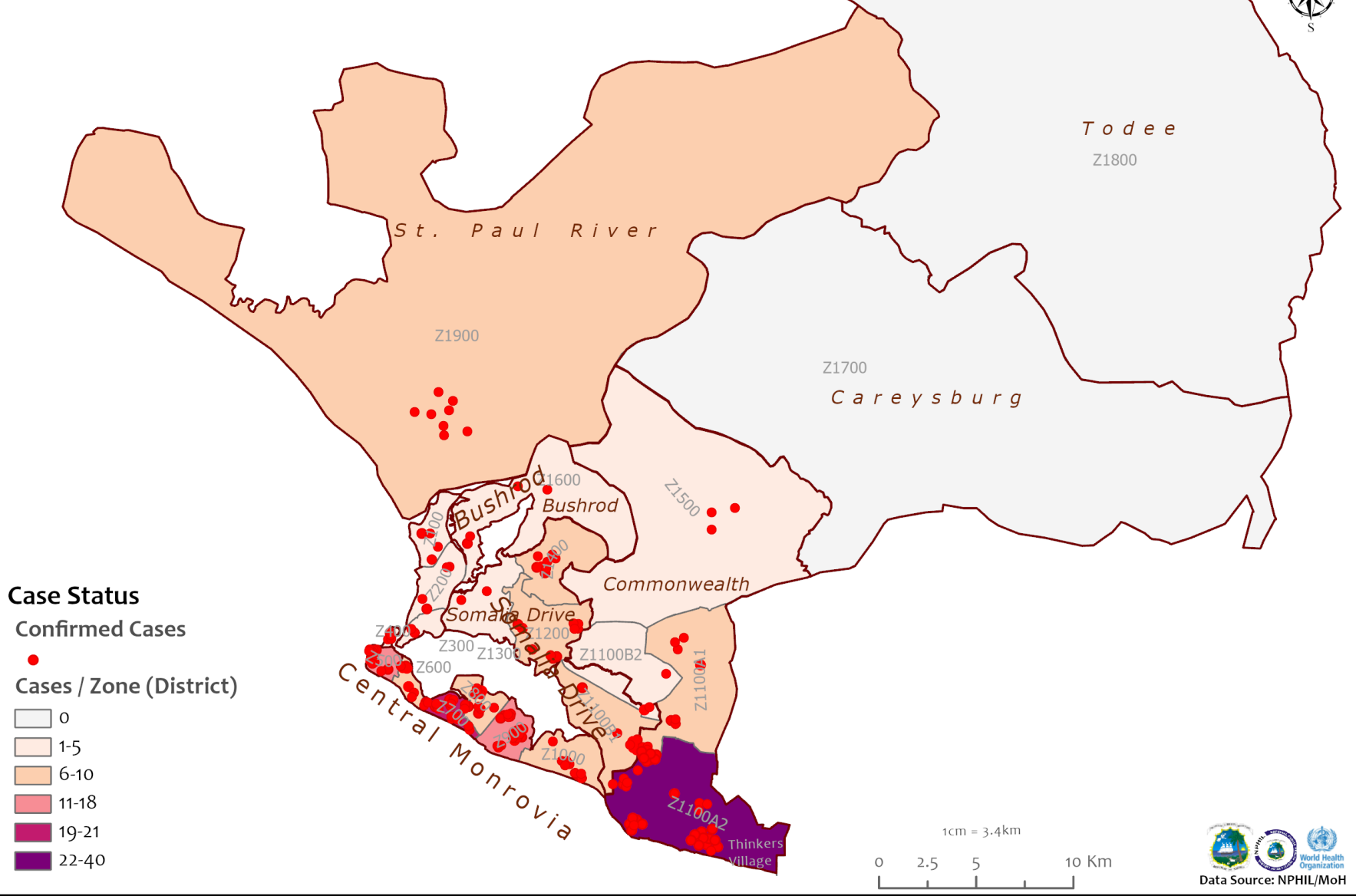


Total Cases: 229

Affected Counties	
Montserrado	192
Margibi	16
Gbarpolu	7
Nimba	6
Grand Bassa	4
River Gee	1
Maryland	1
Grand Kru	1
Sinoe	1

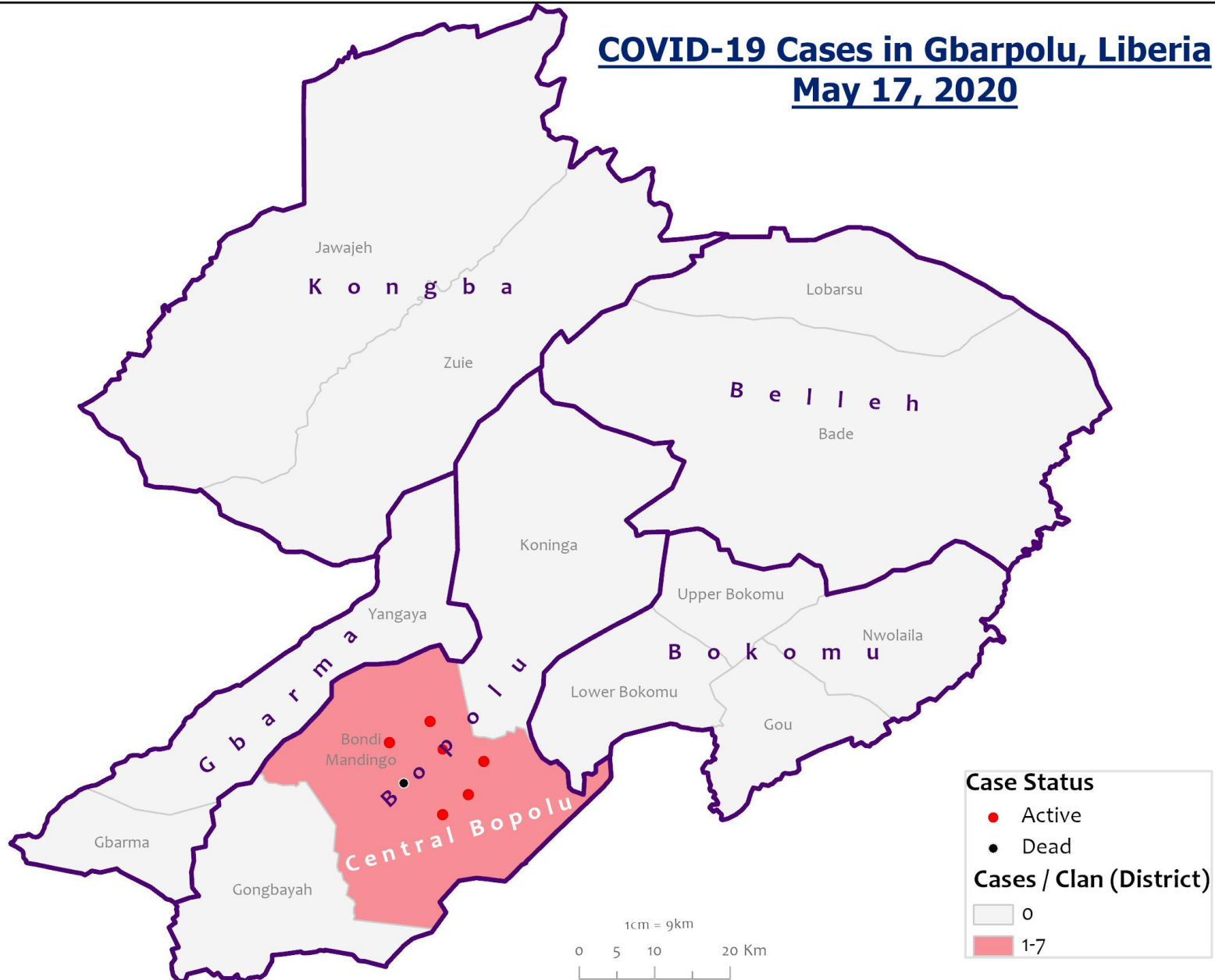


COVID-19 Cases in Montserrado, Liberia - May 17, 2020





COVID-19 Cases in Gbarpolu, Liberia May 17, 2020



Precautionary Observation Centers (POC): Admission and Discharges

County	Precautionary Observation Centers				Moved to Treatment
	New admissions	Currently in POC	Daily Discharges	Cumulative Discharges (not including transferred)	
Gbarpolu	0	0	0	0	5
Grand Bassa	0	0	0	0	0
Grand Kru	0	0	0	16	0
Margibi	0	0	0	0	0
Maryland	0	35	0	7	0
Montserrado	0	7	0	58	0
Nimba	0	3	0	14	0
River Gee	0	0	0	0	0
Sinoe	0	21	0	83	0
NATIONAL	0	66	0	178	5

Treatment Unit Daily Report – May 17, 2020

14 Military Hospital Treatment Unit						
New admissions	Daily Discharges	Cumulative Recoveries	Daily Deaths	Cumulative Deaths	*Currently in treatment	Available Bed Occupancy (%)
1	3	119	1	2	36	34.2%

Demographic Breakdown of Cases at 14 Military Hospital											
Total Census	Total Adult	Total Children	Total Female	Total Male	Total Confirm	Others	Pregnant	Children			
								<1	1-5	6-10	11-17
36	29	7	12	24	35	1	1	1	1	1	4

*35 confirmed cases + 1 special case = 36 total patients

Admissions, Currently in Treatment, and Discharges

COVID-19 Treatment Units									
Treatment Unit	New admissions	Cumulative admissions	Discharges	Cumulative Discharges	Currently in Treatment Unit	Total Males	Total Females	0-35 yrs	36+ yrs
Chief Jallahlone Hospital, Gbarpolu	0	1	0	0	1	0	1	1	0
Rally Time Hospital, Grand Kru	0	1	0	1	0	1	0	0	1
Jackson F. Doe Hospital, Nimba	0	1	0	0	1	1	0	1	0
Ganta Methodist Hospital, Nimba	0	1	0	1	0	1	0	0	1
Pleebo Health Center, Maryland	0	1	0	0	1	1	0	1	0
Fish Town Hospital, River Gee	0	1	0	1	0	1	0	0	1
Buchanan, Grand Bassa	0	1	0	0	1	1	0	1	0
Duside, Margibi									
F. J. Grant Hospital, Sinoe	0	1	0	1	0	1	0	1	0
Total	0	8	0	4	4	7	1	5	3

Laboratory Samples Evaluated – May 17, 2020

Laboratory	Total	New Positive	Repeat Positive	Initial Negative	Repeat Test Negative	Indeterminate
NPHRL	56	3	5	41	6	1
Total	56	3	5	41	6	1

Summary of COVID-19 Contact Tracing in Response Counties

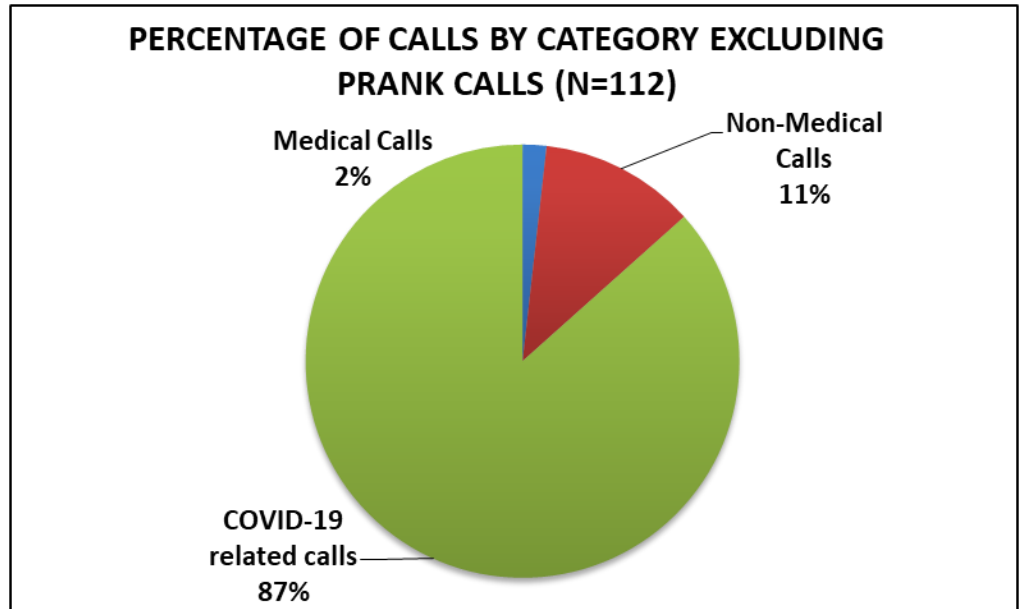
County	New Contacts Line listed	Cumulative Contacts	No. of Health Care Workers as Contacts	Cumulative no. of Health Care Workers as contacts	Contacts became a case	Cumulative contacts that became a case	Contacts Completed 14 Days	Cumulative Contacts Completing 14 Days	Contacts Under Follow-up	Contacts lost to Follow-up
Montserrado	0	1659	0	256	0	54	0	1185	348	126
Margibi	0	158	0	80	0	11	0	74	84	0
Grand Bassa	10	10	1	1	0	0	0	0	10	0
Maryland	0	45	0	16	0	0	0	7	45	0
River Gee	0	72	0	1	0	0	0	0	72	0
Sinoe	0	104	0	15	0	0	0	82	22	0
Grand Kru	0	117	0	0	0	1	0	114	3	0
Gbarpolu	0	45	0	8	0	5	0	0	45	3
Nimba	0	277	0	24	0	1	0	266	50	0
National	10	2487	1	401	0	72	0	1728	679	126

**Data reconciliation is currently ongoing in Montserrado thereby leading to incomplete information on the county record. The national team is closely working with the county to resolve on the completion of the data cleaning*

PHEOC Call Center Report (May 16, 2020)

CALLS AND TRIAGE from Hotline/Call Center-4455	Number
Live calls	2
Repeat calls	0
Deaths reported	6
Repeat Deaths report/follow-up	2
Non-Medical Calls	100
Non-Medical Calls Repeat/Follow-up	2
Prank calls	378
Total Calls	490

Calls by Category Excluding Prank (n=112)	Percentages
Medical Calls	2
Non-Medical Calls	11.6
COVID-19 related calls	86.6



Thank you for Listening