



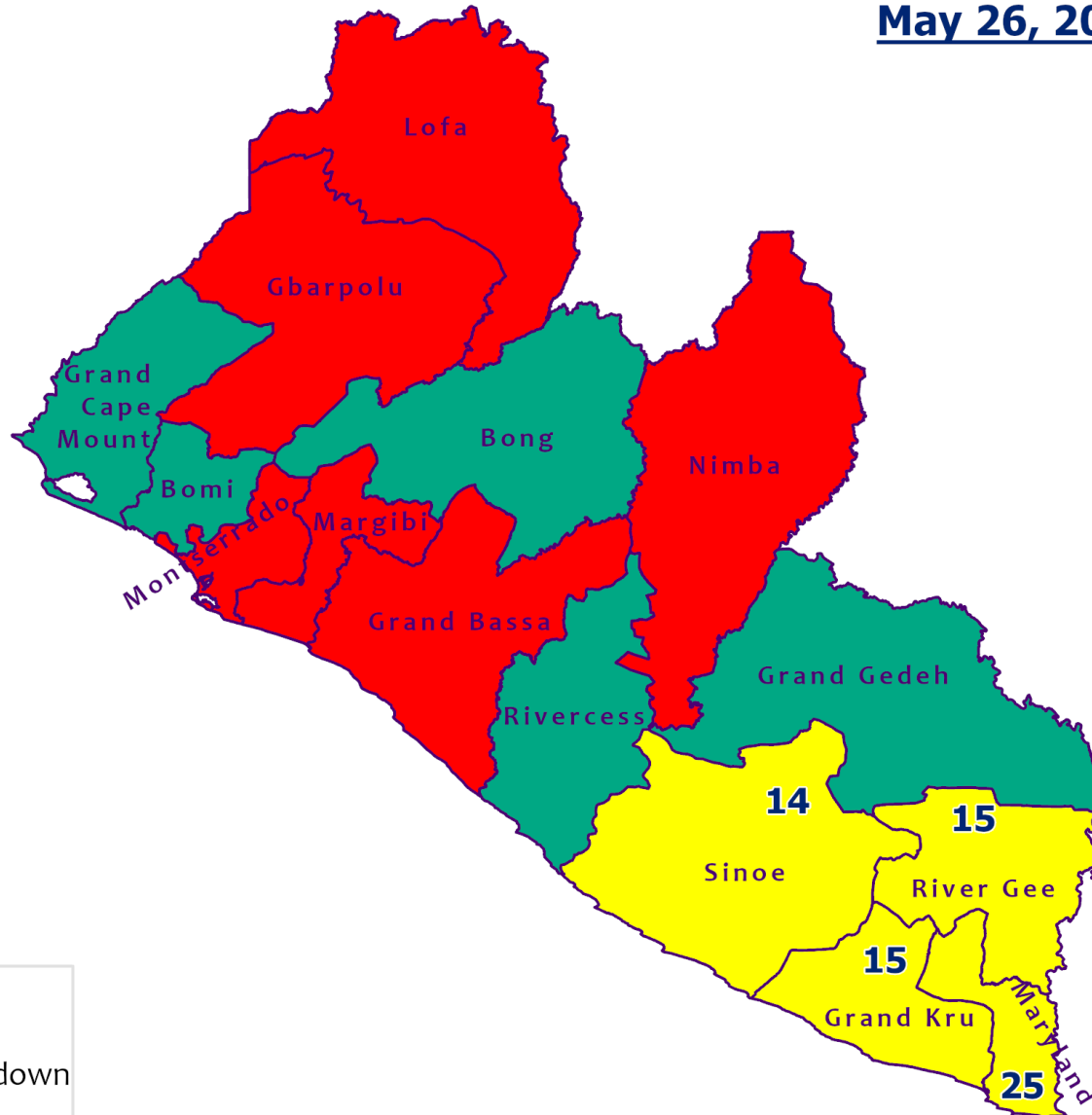
# **Liberia COVID-19 Daily Sitrep 72 (26<sup>th</sup> May 2020)**

# Summary of COVID-19 Cases by Reporting County, Liberia, 16 March – 26 May 2020

County	Laboratory Confirmed Cases	Confirmed Cases on Contact List	CUMULATIVE CASES
			Confirmed
Gbarpolu	0	0	6
Grand Bassa	0	0	4
Grand Kru	0	0	1
Lofa	0	0	2
Margibi	0	0	25
Maryland	0	0	1
Montserrado	0	0	218
Nimba	0	0	7
River Gee	0	0	1
Sinoe	0	0	1
<b>NATIONAL</b>	<b>0</b>	<b>0</b>	<b>266</b>



# Counties COVID-19 Status in Liberia May 26, 2020



## County Status

- Preparedness
- 28-Day Countdown
- Response

0 15 30 60 90  
Kilometers



Data Source: NPHIL/MoH

# Demographic Breakdown (Gender & Age) of Confirmed COVID-19 Cases (March 16 – 26 May 2020)

County	<15 years		15 - 34		35 - 54		55+		All ages		Total Confirmed
	M	F	M	F	M	F	M	F	M	F	
Gbarpolu	1	2	0	0	1	1	1	0	3	3	6
Grand Bassa	0	0	1	3	0	0	0	0	1	3	4
Grand Kru	0	0	1	0	0	0	0	0	1	0	1
Lofa	0	0	0	0	0	0	2	0	2	0	2
Margibi	2	1	0	5	5	4	4	4	11	14	25
Maryland	0	0	1	0	0	0	0	0	1	0	1
Montserrado	9	10	37	23	69	25	32	13	147	71	218
Nimba	0	0	0	0	4	2	1	0	5	2	7
River Gee	0	0	0	0	1	0	0	0	1	0	1
Sinoe	0	0	0	0	1	0	0	0	1	0	1
<b>National</b>	<b>12</b>	<b>13</b>	<b>40</b>	<b>31</b>	<b>81</b>	<b>32</b>	<b>40</b>	<b>17</b>	<b>173</b>	<b>93</b>	<b>266</b>

# Demographic Breakdown (Gender & Age) of Confirmed COVID-19 Deaths (March 16 – 26 May 2020)

County	<15 years		15 - 34		35 - 54		55+		All ages		Total Confirmed
	M	F	M	F	M	F	M	F	M	F	
Gbarpolu	0	0	0	0	1	0	1	0	2	0	2
Grand Bassa	0	0	0	0	0	0	0	0	0	0	0
Grand Kru	0	0	0	0	0	0	0	0	0	0	0
Lofa	0	0	0	0	0	0	2	0	2	0	2
Margibi	0	0	0	0	0	0	0	1	0	1	1
Maryland	0	0	0	0	0	0	0	0	0	0	0
Montserrado	0	0	0	0	8	3	5	2	13	5	18
Nimba	0	0	0	0	2	1	1	0	3	1	4
River Gee	0	0	0	0	0	0	0	0	0	0	0
Sinoe	0	0	0	0	0	0	0	0	0	0	0
<b>National</b>	<b>0</b>	<b>0</b>	<b>0</b>	<b>0</b>	<b>11</b>	<b>4</b>	<b>9</b>	<b>3</b>	<b>20</b>	<b>7</b>	<b>27</b>

# Summary of COVID-19 Deaths by Reporting County, Liberia, 16 March – 26 May 2020

County	DAILY REPORT								Cumulative Deaths
	New Suspected Deaths	Laboratory Confirmed Deaths						Confirmed Deaths on Contact List	
		COVID-19 Treatment Unit	Total in COVID-19 Treatment Unit	Health Facility	Total in Health Facility	Community	Total in Community		
Gbarpolu	0	0	0	0	2	0	0	0	2
Grand Bassa	0	0	0	0	0	0	0	0	0
Grand Kru	0	0	0	0	0	0	0	0	0
Lofa	0	0	0	0	1	0	1	0	2
Maryland	0	0	0	0	0	0	0	0	0
Margibi	0	0	0	0	1	0	0	0	1
Montserrado	0	1	3	0	4	0	11	0	17
Nimba	0	0	0	0	3	0	1	0	4
River Gee	0	0	0	0	0	0	0	0	0
Sinoe	0	0	0	0	0	0	0	0	0
<b>National</b>	<b>0</b>	<b>1</b>	<b>3</b>	<b>0</b>	<b>11</b>	<b>0</b>	<b>13</b>	<b>0</b>	<b>27</b>

# Daily and Cumulative Healthcare Worker (HCW) COVID-19 Cases and Deaths by County, Liberia, 16 March – 26 May 2020

County	DAILY REPORT						CUMULATIVE CASES (ALIVE & DEAD)	
	New Suspected & High Risk Cases (Alive)			New Suspect Death	Laboratory Confirmed Cases	Confirmed Cases on Contact List	Confirmed	Deaths
	Suspect	High Risk	Total					
Gbarpolu	0	0	0	0	0	0	1	1
Grand Bassa	0	0	0	0	0	0	0	0
Grand Kru	0	0	0	0	0	0	0	0
Lofa	0	0	0	0	0	0	0	0
Margibi	0	0	0	0	0	0	9	1
Maryland	0	0	0	0	0	0	0	0
Montserrado	0	0	0	0	0	0	34	1
Nimba	0	0	0	0	0	0	0	0
River Gee	0	0	0	0	0	0	0	0
Sinoe	0	0	0	0	0	0	0	0
<b>NATIONAL</b>	<b>0</b>	<b>0</b>	<b>0</b>	<b>0</b>	<b>0</b>	<b>0</b>	<b>44</b>	<b>3</b>

# Cadre Cases and Deaths by Health Care Workers (16 March – 26 May 2020)

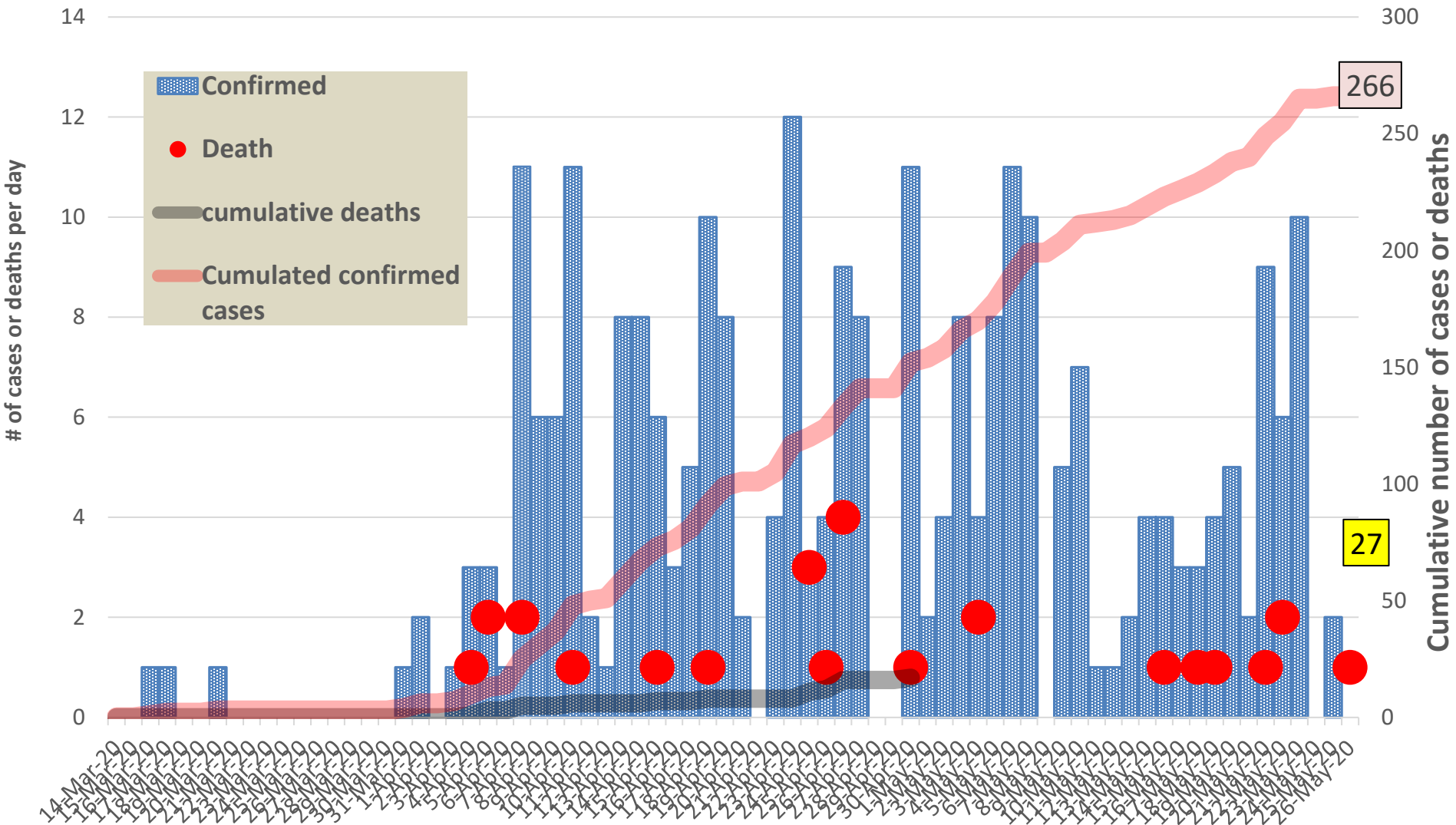
Health Care Worker Cadre	Montserratado		Margibi		Nimba		River Gee		Sinoe		Grand Kru		Gbarpolu		Lofa		Grand Bassa		National (Total)	
	Cases	Deaths	Cases	Deaths	Cases	Deaths	Cases	Deaths	Cases	Deaths	Cases	Deaths	Cases	Deaths	Cases	Deaths	Cases	Deaths	Cases	Deaths
Doctors	5	0	0	0	0	0	0	0	0	0	0	0	0	0	0	0	0	0	5	0
Pharmacists	1	0	0	0	0	0	0	0	0	0	0	0	0	0	0	0	0	0	1	0
Nurses	15	1	3	0	0	0	0	0	0	0	0	0	1	1	0	0	0	0	19	2
Radiologist	1	0	0	0	0	0	0	0	0	0	0	0	0	0	0	0	0	0	1	0
Physician Assistants	0	0	0	0	0	0	0	0	0	0	0	0	0	0	0	0	0	0	0	0
Lab Technician	3	0	1	0	0	0	0	0	0	0	0	0	0	0	0	0	0	0	4	0
Environmental Health Technicians	6	0	0	0	0	0	0	0	0	0	0	0	0	0	0	0	0	0	6	0
Microbiologist	1	0	0	0	0	0	0	0	0	0	0	0	0	0	0	0	0	0	1	0
Epidemiologist	1	0	0	0	0	0	0	0	0	0	0	0	0	0	0	0	0	0	1	0
Dieticians	0	0	5	1	0	0	0	0	0	0	0	0	0	0	0	0	0	0	5	1
Psychosocial Worker	1	0	0	0	0	0	0	0	0	0	0	0	0	0	0	0	0	0	1	0
<b>Total:</b>	<b>34</b>	<b>1</b>	<b>9</b>	<b>1</b>	<b>0</b>	<b>0</b>	<b>0</b>	<b>0</b>	<b>0</b>	<b>0</b>	<b>0</b>	<b>0</b>	<b>1</b>	<b>1</b>	<b>0</b>	<b>0</b>	<b>0</b>	<b>0</b>	<b>44</b>	<b>3</b>



## Suspected and High Risk Cases and Deaths (16 March – 26 May 2020)

County	New Suspected	Cumulative Suspected	New High Risk	Cumulative High Risk	New Suspected Deaths	Cumulative Suspected Deaths
<b>Montserrado</b>	5	1295			0	64
<b>Margibi</b>	0	1	0	24	0	1
<b>Maryland</b>	0	12	0	14	0	2
<b>River Gee</b>	0	5	0	8	0	0
<b>Lofa</b>	0	17	0	33	0	17
<b>Sinoe</b>	0	26	0	40	0	0
<b>Grand Kru</b>	0	7	0	21	0	0
<b>Gbarpolu</b>	0	2	0	6	0	0
<b>Grand Bassa</b>	0	21	0	12	0	0
<b>Nimba</b>	0	31	0	84	0	8
<b>National</b>	5	1417	0	242	0	92

# EPI-Curve of Confirmed Cases and Deaths



# COVID-19 Cases in Liberia - May 26, 2020



## Legend

Confirmed Cases

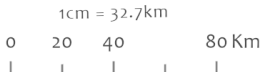
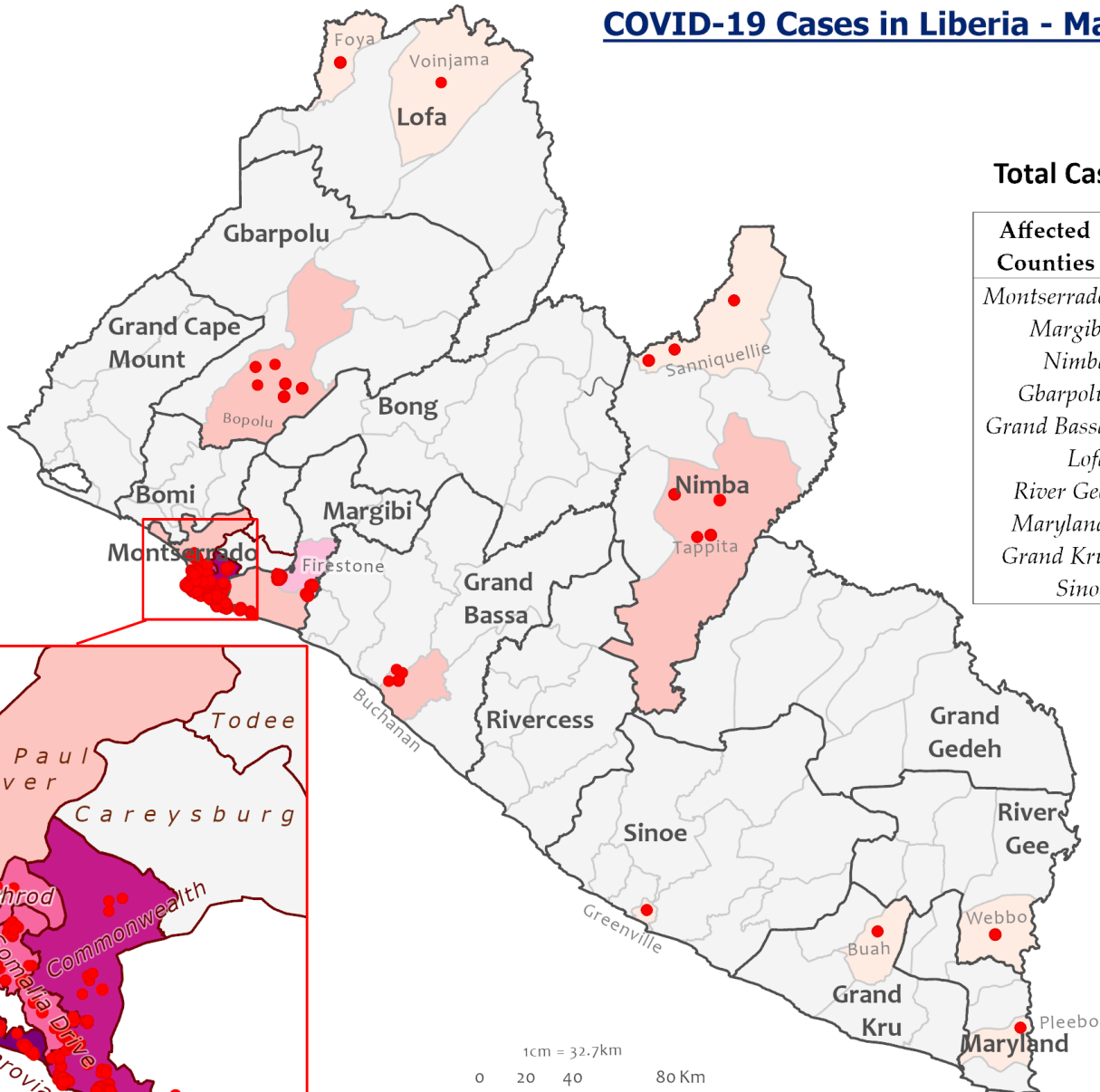
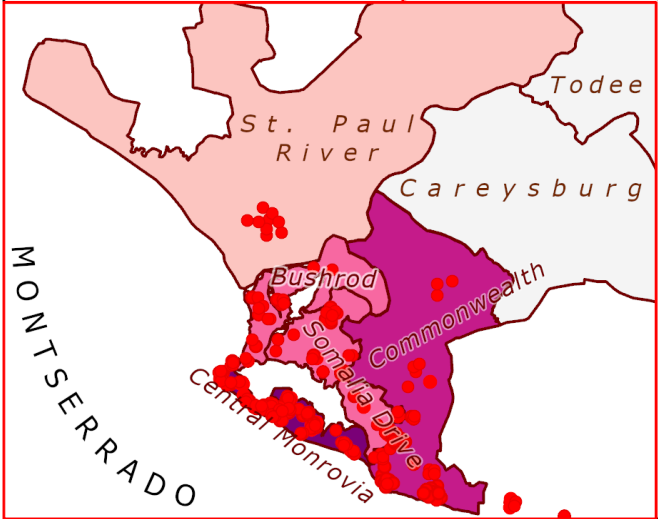


Cases / District



**Total Cases: 266 (90)**

Affected Counties	Cumulative Cases (Active)
Montserrado	218 (63)
Margibi	25 (17)
Nimba	7 (1)
Gbarpolu	6 (5)
Grand Bassa	4 (4)
Lofa	2 (0)
River Gee	1 (0)
Maryland	1 (0)
Grand Kru	1 (0)
Sinoe	1 (0)



Data Source: NPHI/MoH

# COVID-19 Cases in Montserrado, Liberia - May 26 2020



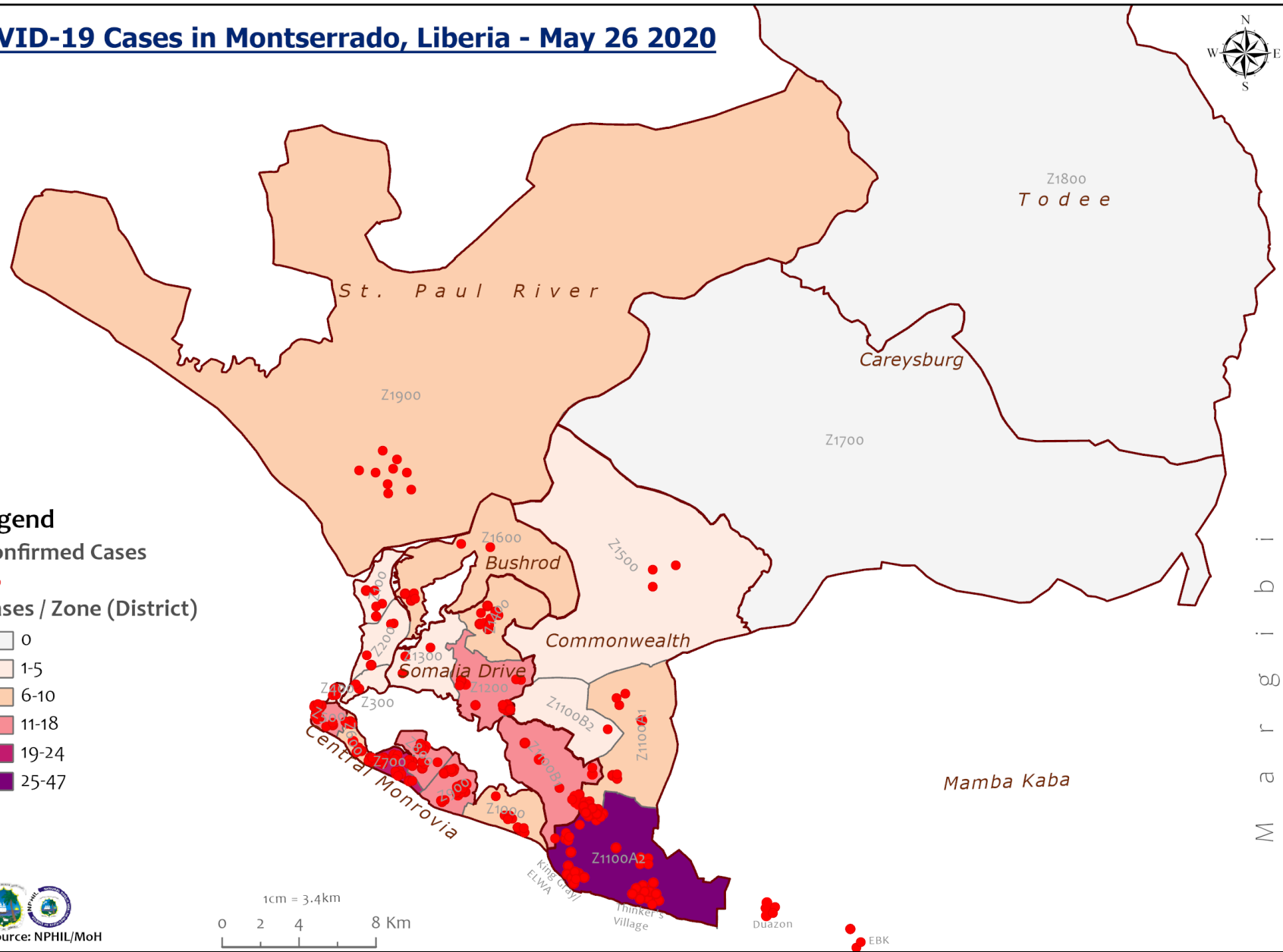
## Legend

Confirmed Cases

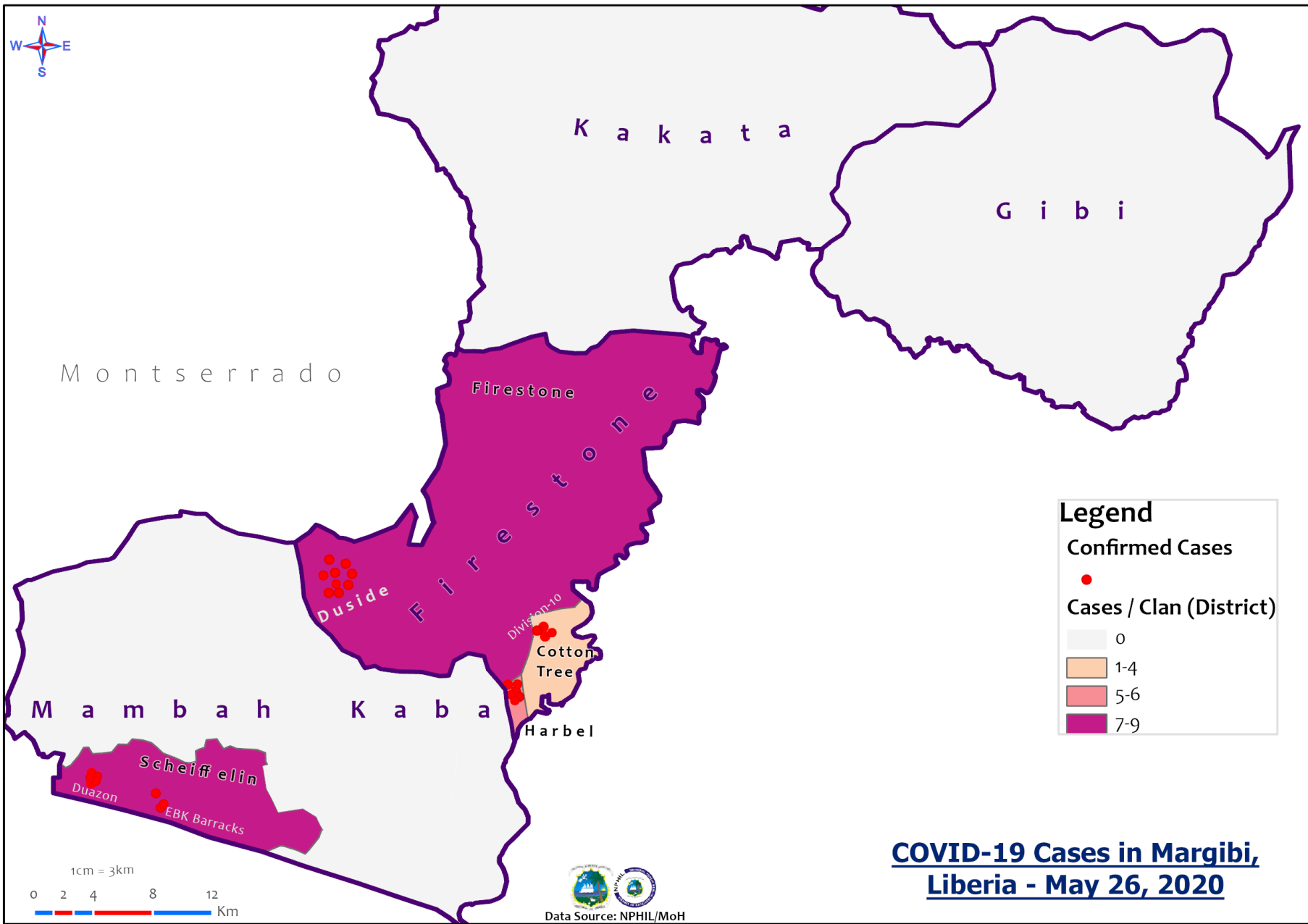


Cases / Zone (District)

- 0
- 1-5
- 6-10
- 11-18
- 19-24
- 25-47



M a r g i n a l



**COVID-19 Cases in Margibi, Liberia - May 26, 2020**



Data Source: NPHIL/MoH

# Precautionary Observation Centers (POC): Admission and Discharges

County	Precautionary Observation Centers				Cumulative Move to Treatment
	New admissions	Currently in POC	Daily Discharges	Cumulative Discharges (not including transferred)	
Gbarpolu	0	0	0	0	5
Grand Bassa	0	9	0	0	4
Grand Kru	0	0	0	16	0
Margibi	0	15	0	85	2
Maryland	0	0	0	35	0
Montserrado	0	7	0	58	0
Nimba	0	13	0	17	0
River Gee	0	0	0	0	0
Sinoe	0	0	0	104	0
Lofa	4	28	0	0	1
<b>NATIONAL</b>	<b>4</b>	<b>72</b>	<b>0</b>	<b>315</b>	<b>12</b>

## Treatment Unit Daily Report – May 26, 2020

<b>14 Military Hospital Treatment Unit</b>						
<b>New admissions</b>	<b>Daily Discharges</b>	<b>Cumulative Recoveries</b>	<b>Daily Deaths</b>	<b>Cumulative Deaths</b>	<b>*Currently in treatment</b>	<b>Number of Vacant Beds</b>
3	0	132	1	3	54	56

<b>Demographic Breakdown of Cases at 14 Military Hospital</b>											
<b>Total Census</b>	<b>Total Adult</b>	<b>Total Children</b>	<b>Total Female</b>	<b>Total Male</b>	<b>Total Confirm</b>	<b>Others</b>	<b>Pregnant</b>	<b>Children</b>			
								<b>&lt;1</b>	<b>1-5</b>	<b>6-10</b>	<b>11-17</b>
54	44	10	17	37	50	4	1	1	2	1	6

\*50 confirmed cases + 4 special cases = 54 total patients

## Recoveries from Treatment Units (16 March – 26 May 2020)

<b>COVID-19 Treatment Units</b>				
<b>Treatment Unit</b>	<b>New admissions</b>	<b>Cumulative admissions</b>	<b>Recoveries</b>	<b>Cumulative Recoveries</b>
14 Military Hospital, Montserrado	3	190	0	132
Chief Jallahlone Hospital, Gbarpolu	0	1	0	0
Rally Time Hospital, Grand Kru	0	1	0	1
Jackson F. Doe Hospital, Nimba	0	1	0	0
Ganta Methodist Hospital, Nimba	0	1	0	1
Pleebo Health Center, Maryland	0	1	0	1
Fish Town Hospital, River Gee	0	1	0	1
Arcelor Mittal Hospital, Grand Bassa	0	4	0	0
Duside Hospital, Margibi	0	17	0	7
F. J. Grant Hospital, Sinoe	0	0	0	1
<b>Total</b>	<b>3</b>	<b>217</b>	<b>0</b>	<b>144</b>



# Admissions, Currently in Treatment, and Discharges

COVID-19 Treatment Units									
Treatment Unit	New admissions	Cumulative admissions	Discharges	Cumulative Discharges	Currently in Treatment Unit	Total Males	Total Females	0-35 yrs	36+ yrs
Chief Jallahlone Hospital, Gbarpolu	0	1	0	0	1	0	1	1	0
Rally Time Hospital, Grand Kru	0	1	0	1	0	0	0	0	0
Jackson F. Doe Hospital, Nimba	0	1	0	0	1	1	0	1	0
Ganta Methodist Hospital, Nimba	0	1	0	1	0	0	0	0	0
Pleebo Health Center, Maryland	0	1	0	1	0	0	0	0	0
Fish Town Hospital, River Gee	0	1	0	1	0	0	0	0	0
Lofa	0	0	0	0	0	0	0	0	0
Arcelor Mittal, Grand Bassa	0	4	0	0	4	1	3	4	0
Duside Hospital, Margibi	0	17	0	7	10	4	6	3	7
F. J. Grant Hospital, Sinoe	0	1	0	1	0	0	0	0	0
<b>Total</b>	<b>0</b>	<b>28</b>	<b>0</b>	<b>12</b>	<b>16</b>	<b>6</b>	<b>10</b>	<b>9</b>	<b>7</b>

## Laboratory Samples Evaluated – May 26, 2020

Laboratory	Total	New Positive	Repeat Positive	Initial Negative	Repeat Test Negative	Indeterminate
NPHRL	0	0	0	0	0	0
<b>Total</b>	<b>0</b>	<b>0</b>	<b>0</b>	<b>0</b>	<b>0</b>	<b>0</b>

**Note: On 26 May 2020 at 11:45, an email from the NRL indicated that there will be a delay of COVID-19 Lab results due to technical issues**

# Summary of COVID-19 Contact Tracing in Response Counties

County	New Contacts Line listed	Cumulative Contacts	No. of Health Care Workers as Contacts	Cumulative no. of Health Care Workers as contacts	Contacts became a case	Cumulative contacts that became a case	Contacts Completed 14 Days	Cumulative Contacts Completing 14 Days	Contacts Under Follow-up	Contacts lost to Follow-up
Montserratado	50	2020	0	298	0	60	25	1678	288	3
Margibi	0	224	0	91	0	19	0	132	92	0
Grand Bassa	0	43	0	37	0	3	0	3	43	0
Maryland	0	52	0	16	0	0	0	52	0	0
River Gee	0	72	0	1	0	0	0	0	0	0
Sinoe	0	104	0	15	0	0	0	104	0	0
Grand Kru	0	98	0	0	0	1	0	98	0	1
<b>Gbarpolu</b>	<b>0</b>	<b>47</b>	<b>0</b>	<b>9</b>	<b>0</b>	<b>6</b>	<b>0</b>	<b>6</b>	<b>41</b>	<b>0</b>
Lofa	2	45	0	14	0	1	0	0	45	0
Nimba	0	335	0	25	0	1	0	275	58	1
<b>National</b>	<b>52</b>	<b>3040</b>	<b>0</b>	<b>506</b>	<b>0</b>	<b>90</b>	<b>25</b>	<b>2348</b>	<b>567</b>	<b>5</b>

# Active Case Finding (16 March – 26 May 2020)

County	No. of communities Assigned	No. of communities Visited	No. of Households Assigned	No. of Households Visited	Sick persons Identified	Cumulative Sick persons identified	Sick persons referred for Investigation	Cumulative Sick person referred for Investigation	Sick persons Investigated	Cumulative Sick persons Investigated	Sick persons investigated and referred for testing	Cumulative Sick persons investigated and referred for testing	No. of Sick persons followed-up today	No. of supervision visits	No. of Supervisory Calls
Montserado	250	0	0	2500	1	100	1	79	1	72	1	27			
Margibi	15	15	15	189	1	2	1	2	1	14	1	9	11	5	15
Maryland	9	9	23	23	0	0	0	0	0	0	0	0	0	2	9
River Gee	80	80	6	6	3	9	3	9	3	9	0	6	0	6	0
Sinoe	19	19	0	0	0	0	0	0	0	0	0	0	0	3	7
Grand Kru	9	9	317	317	0	0	0	0	0	0	0	0	0	6	11
Gbarpolu															
Grand Bassa	24	24	290	186	0	0	0	0	0	0	0	0	0	14	8
Nimba															
Lofa	45	45	156	156	0	17	0	16	0	16	0	16	1	1	22
National	451	201	807	3377	5	128	5	106	5	111	2	58	12	37	72

Thank you for Listening