



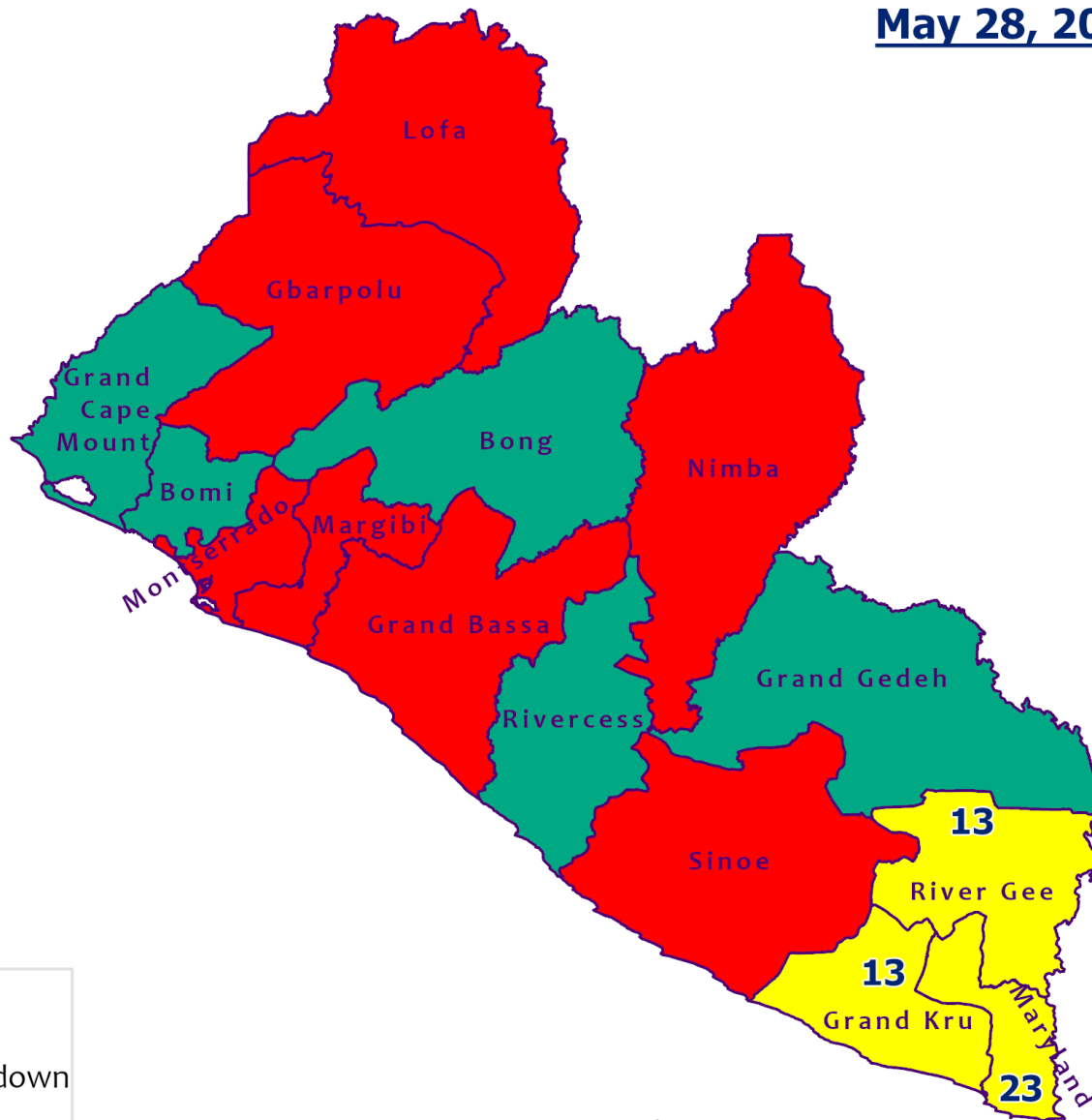
Liberia COVID-19 Daily Sitrep 74 (28th May 2020)

Summary of COVID-19 Cases by Reporting County, Liberia, 16 March – 28 May 2020

County	Laboratory Confirmed Cases	Confirmed Cases on Contact List	CUMULATIVE CASES
			Confirmed
Gbarpolu	0	0	6
Grand Bassa	0	0	4
Grand Kru	0	0	1
Lofa	0	0	2
Margibi	0	0	25
Maryland	0	0	1
Montserrado	3	0	224
Nimba	0	0	7
River Gee	0	0	1
Sinoe	1	0	2
NATIONAL	4	0	273



Counties COVID-19 Status in Liberia May 28, 2020



County Status

- Preparedness
- 28-Day Countdown
- Response

0 15 30 60 90
Kilometers



Data Source: NPHIL/MoH

Demographic Breakdown (Gender & Age) of Confirmed COVID-19 Cases (March 16 – 28 May 2020)

County	<15 years		15 - 34		35 - 54		55+		All ages		Total Confirmed
	M	F	M	F	M	F	M	F	M	F	
Gbarpolu	1	2	0	0	1	1	1	0	3	3	6
Grand Bassa	0	0	1	3	0	0	0	0	1	3	4
Grand Kru	0	0	1	0	0	0	0	0	1	0	1
Lofa	0	0	0	0	0	0	2	0	2	0	2
Margibi	2	1	0	5	5	4	4	4	11	14	25
Maryland	0	0	1	0	0	0	0	0	1	0	1
Montserrado	9	11	38	25	69	26	33	13	149	75	224
Nimba	0	0	0	0	4	2	1	0	5	2	7
River Gee	0	0	0	0	1	0	0	0	1	0	1
Sinoe	0	0	0	0	2	0	0	0	2	0	2
National	12	14	41	33	82	33	41	17	176	97	273

Demographic Breakdown (Gender & Age) of Confirmed COVID-19 Deaths (March 16 – 28 May 2020)

County	<15 years		15 - 34		35 - 54		55+		All ages		Total Confirmed
	M	F	M	F	M	F	M	F	M	F	
Gbarpolu	0	0	0	0	1	0	1	0	2	0	2
Grand Bassa	0	0	0	0	0	0	0	0	0	0	0
Grand Kru	0	0	0	0	0	0	0	0	0	0	0
Lofa	0	0	0	0	0	0	2	0	2	0	2
Margibi	0	0	0	0	0	0	0	1	0	1	1
Maryland	0	0	0	0	0	0	0	0	0	0	0
Montserrado	0	0	0	0	8	3	5	2	13	5	18
Nimba	0	0	0	0	2	1	1	0	3	1	4
River Gee	0	0	0	0	0	0	0	0	0	0	0
Sinoe	0	0	0	0	0	0	0	0	0	0	0
National	0	0	0	0	11	4	9	3	20	7	27

Summary of COVID-19 Deaths by Reporting County, Liberia, 16 March – 28 May 2020

County	DAILY REPORT								Cumulative Deaths
	New Suspected Deaths	Laboratory Confirmed Deaths						Confirmed Deaths on Contact List	
		COVID-19 Treatment Unit	Total in COVID-19 Treatment Unit	Health Facility	Total in Health Facility	Community	Total in Community		
Gbarpolu	0	0	0	0	2	0	0	0	2
Grand Bassa	0	0	0	0	0	0	0	0	0
Grand Kru	0	0	0	0	0	0	0	0	0
Lofa	0	0	0	0	1	0	1	0	2
Maryland	0	0	0	0	0	0	0	0	0
Margibi	0	0	0	0	1	0	0	0	1
Montserrado	0	0	3	0	4	0	11	0	17
Nimba	0	0	0	0	3	0	1	0	4
River Gee	0	0	0	0	0	0	0	0	0
Sinoe	0	0	0	0	0	0	0	0	0
National	0	0	3	0	11	0	13	0	27

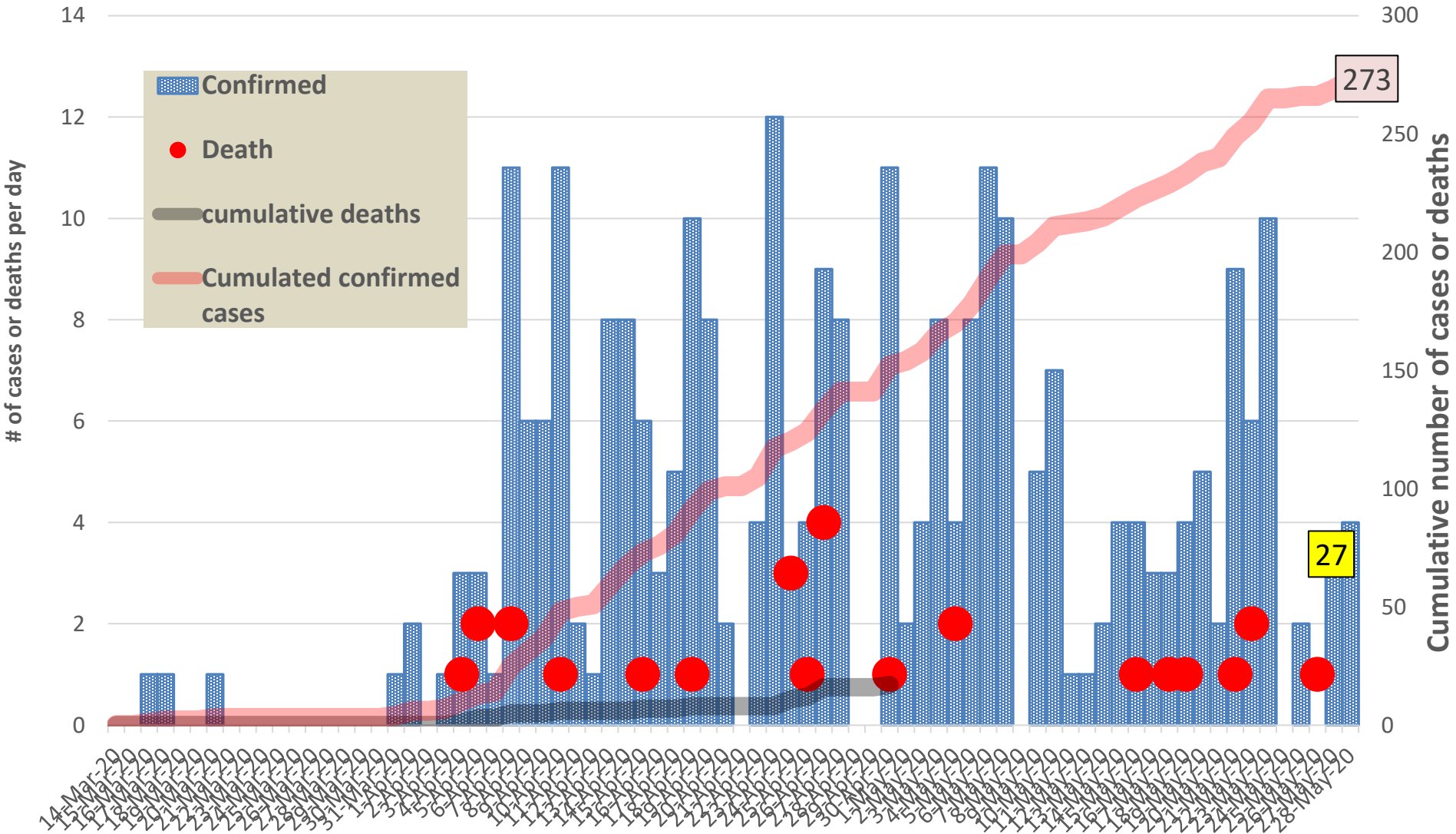
Daily and Cumulative Healthcare Worker (HCW) COVID-19 Cases and Deaths by County, Liberia, 16 March – 28 May 2020

County	DAILY REPORT						CUMULATIVE CASES (ALIVE & DEAD)	
	New Suspected & High Risk Cases (Alive)			New Suspect Death	Laboratory Confirmed Cases	Confirmed Cases on Contact List	Confirmed	Deaths
	Suspect	High Risk	Total					
Gbarpolu	0	0	0	0	0	0	1	1
Grand Bassa	0	0	0	0	0	0	0	0
Grand Kru	0	0	0	0	0	0	0	0
Lofa	0	0	0	0	0	0	0	0
Margibi	0	0	0	0	0	0	9	1
Maryland	0	0	0	0	0	0	0	0
Montserrado	0	0	0	0	0	0	34	1
Nimba	0	0	0	0	0	0	0	0
River Gee	0	0	0	0	0	0	0	0
Sinoe	0	0	0	0	0	0	0	0
NATIONAL	0	0	0	0	0	0	44	3

Cadre Cases and Deaths by Health Care Workers (16 March – 28 May 2020)

Health Care Worker Cadre	Montserratado		Margibi		Nimba		River Gee		Sinoe		Grand Kru		Gbarpolu		Lofa		Grand Bassa		National (Total)	
	Cases	Deaths	Cases	Deaths	Cases	Deaths	Cases	Deaths	Cases	Deaths	Cases	Deaths	Cases	Deaths	Cases	Deaths	Cases	Deaths	Cases	Deaths
Doctors	5	0	0	0	0	0	0	0	0	0	0	0	0	0	0	0	0	0	5	0
Pharmacists	1	0	0	0	0	0	0	0	0	0	0	0	0	0	0	0	0	0	1	0
Nurses	15	1	3	0	0	0	0	0	0	0	0	0	1	1	0	0	0	0	19	2
Radiologist	1	0	0	0	0	0	0	0	0	0	0	0	0	0	0	0	0	0	1	0
Physician Assistants	0	0	0	0	0	0	0	0	0	0	0	0	0	0	0	0	0	0	0	0
Lab Technician	3	0	1	0	0	0	0	0	0	0	0	0	0	0	0	0	0	0	4	0
Environmental Health Technicians	6	0	0	0	0	0	0	0	0	0	0	0	0	0	0	0	0	0	6	0
Microbiologist	1	0	0	0	0	0	0	0	0	0	0	0	0	0	0	0	0	0	1	0
Epidemiologist	1	0	0	0	0	0	0	0	0	0	0	0	0	0	0	0	0	0	1	0
Dieticians	0	0	5	1	0	0	0	0	0	0	0	0	0	0	0	0	0	0	5	1
Psychosocial Worker	1	0	0	0	0	0	0	0	0	0	0	0	0	0	0	0	0	0	1	0
Total:	34	1	9	1	0	0	0	0	0	0	0	0	1	1	0	0	0	0	44	3

EPI-Curve of Confirmed Cases and Deaths



COVID-19 Cases in Liberia - May 28, 2020

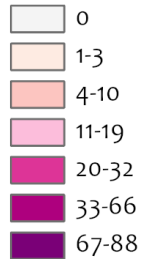


Legend

Confirmed Cases

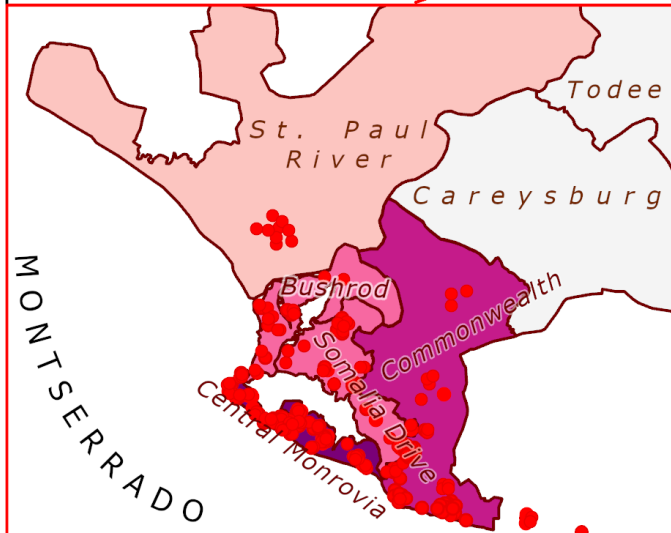
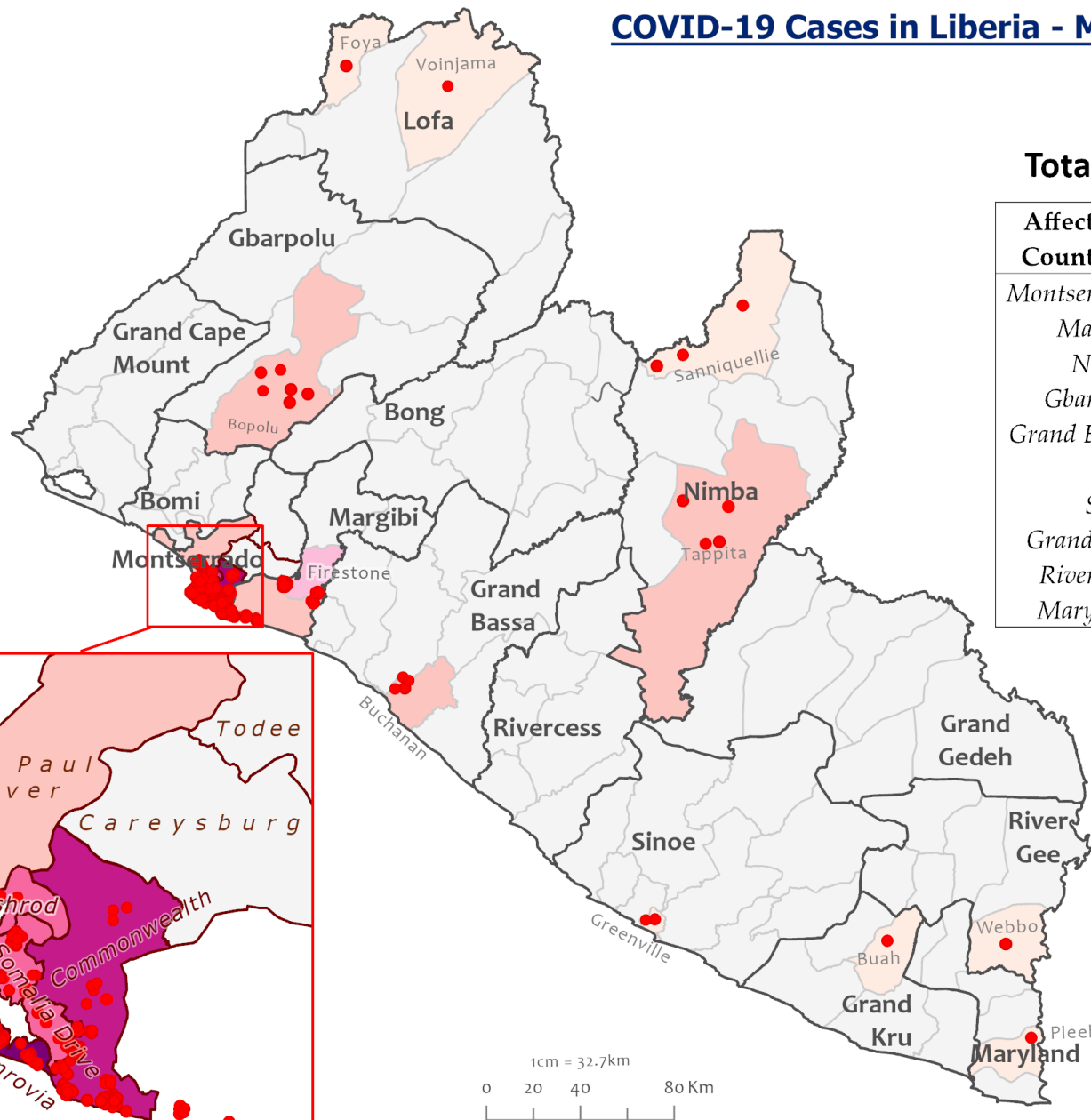


Cases / District



Total Cases: 273

Affected Counties	Cumulative Cases
Montserrado	224
Margibi	25
Nimba	7
Gbarpolu	6
Grand Bassa	4
Lofa	2
Sinoe	2
Grand Kru	1
River Gee	1
Maryland	1



Data Source: NPHIL/MoH

COVID-19 Cases in Montserrado, Liberia - May 28, 2020



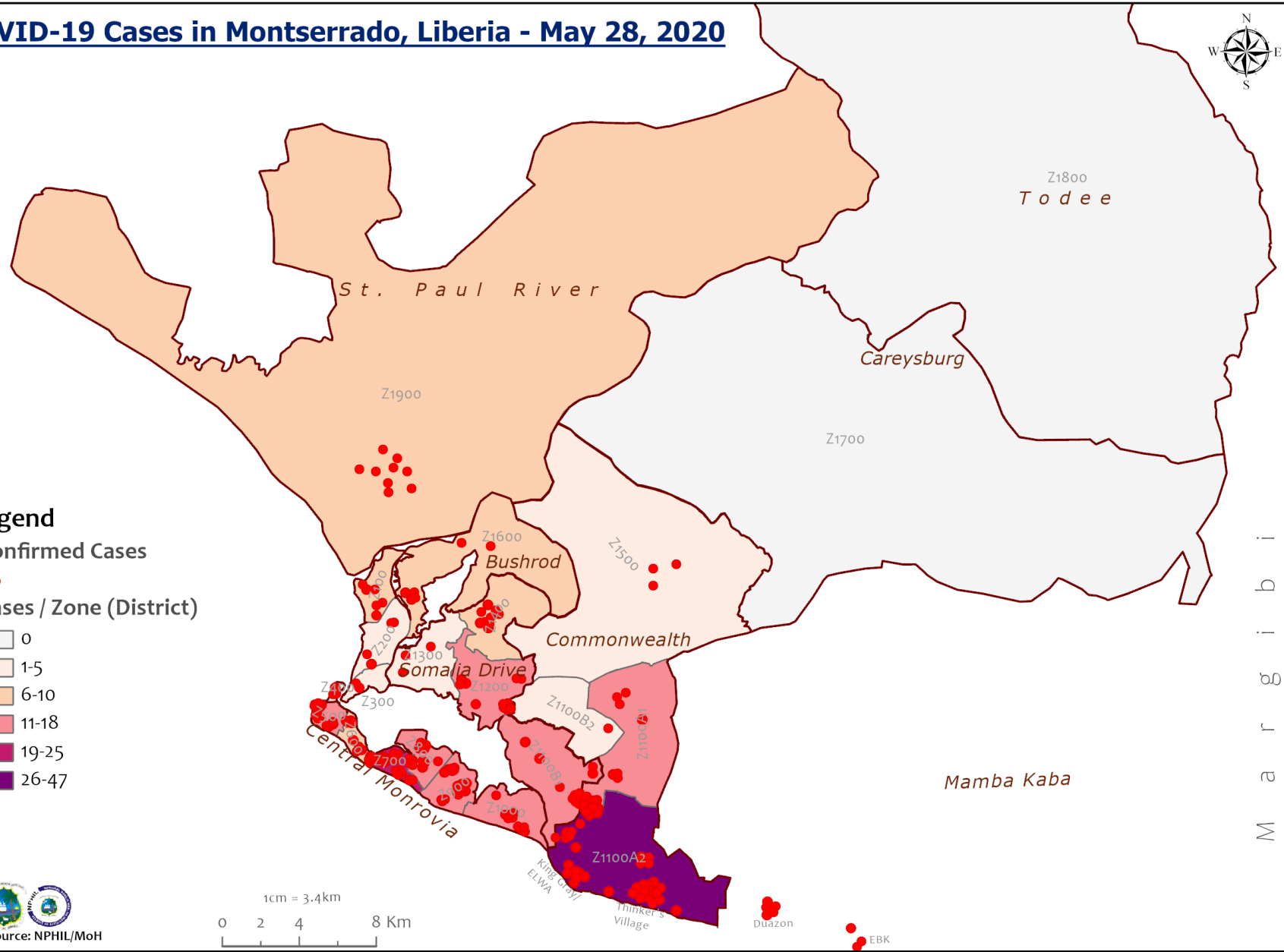
Legend

Confirmed Cases

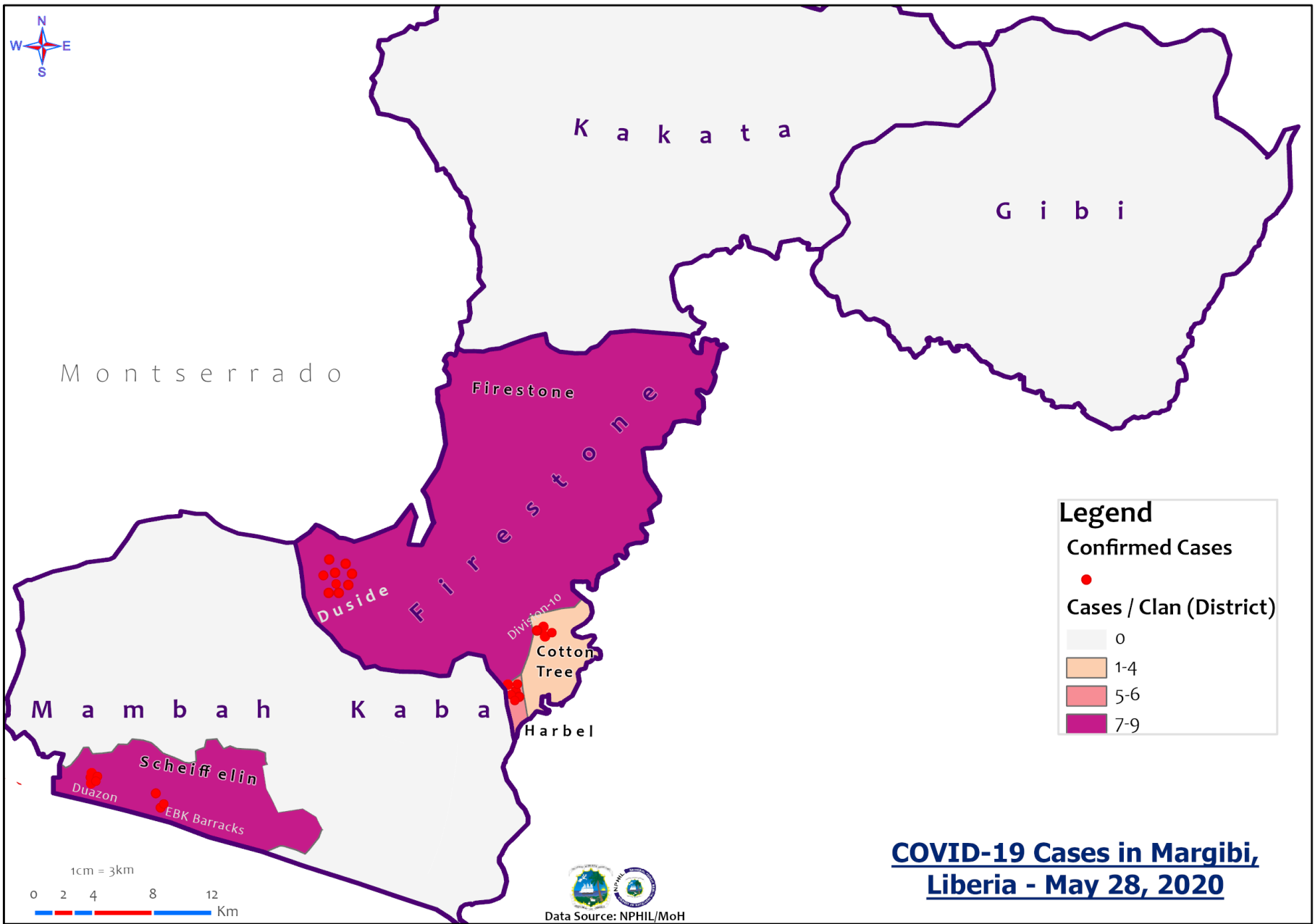


Cases / Zone (District)

- 0
- 1-5
- 6-10
- 11-18
- 19-25
- 26-47



M o n t s e r r a d o



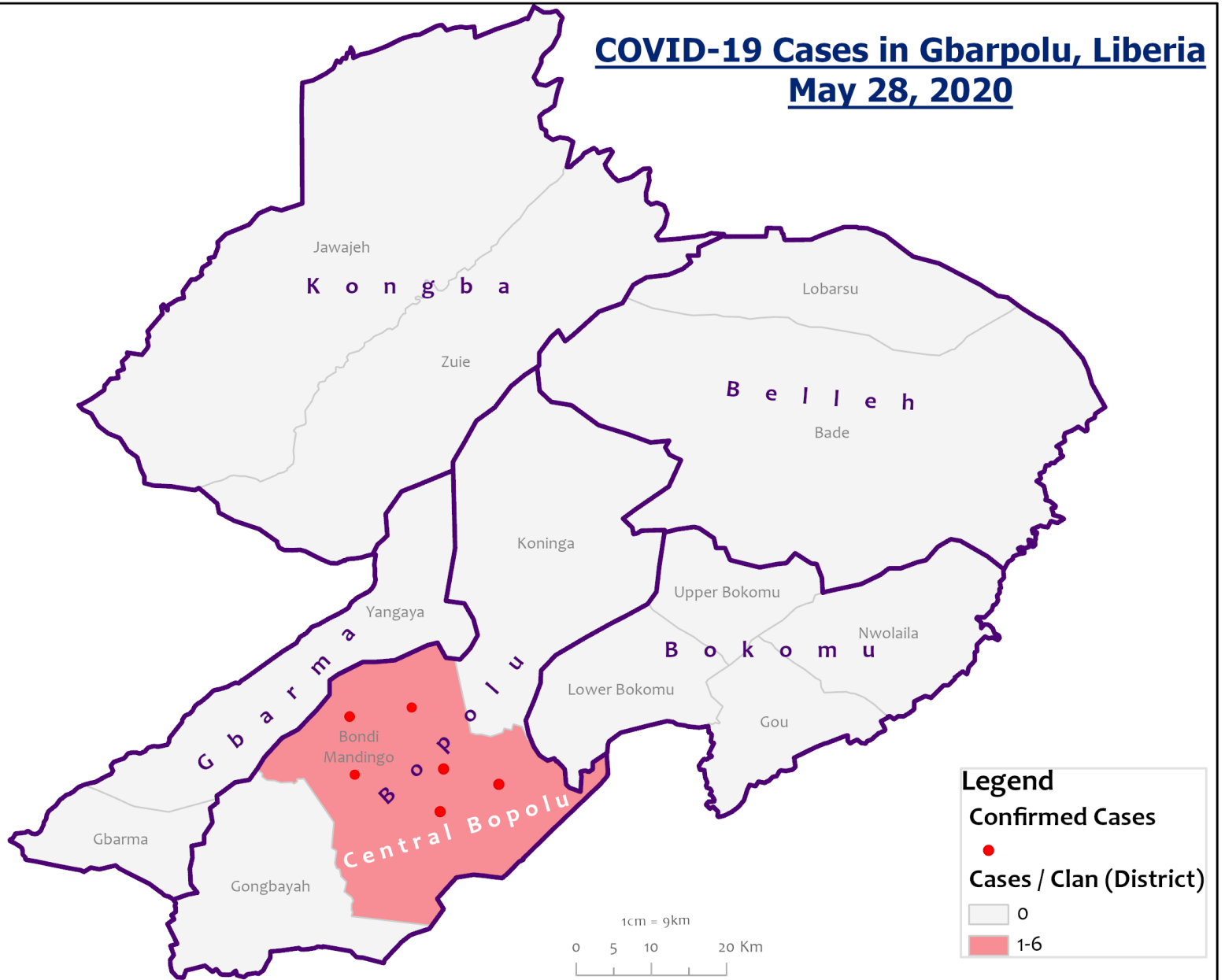
COVID-19 Cases in Margibi, Liberia - May 28, 2020



Data Source: NPHIL/MoH



COVID-19 Cases in Gbarpolu, Liberia May 28, 2020



COVID-19 Cases in Grand Bassa, Liberia - May 28, 2020



Legend

Confirmed Cases

-

Cases / Clan (District)

- 0
- 1-4



Data Source: NPHIL/MoH



Precautionary Observation Centers (POC): Admission and Discharges

County	Precautionary Observation Centers				Cumulative Move to Treatment
	New admissions	Currently in POC	Daily Discharges	Cumulative Discharges (not including transferred)	
Gbarpolu	0	0	0	0	5
Grand Bassa	0	9	0	0	4
Grand Kru	0	0	0	16	0
Margibi	0	15	0	85	2
Maryland	2	2	0	35	0
Montserrado	0	7	0	58	0
Nimba	0	13	0	17	0
River Gee	0	0	0	0	0
Sinoe	0	0	0	104	0
Lofa	7	42	0	0	0
NATIONAL	9	88	0	315	11

Note: Sinoe has not yet reported

Treatment Unit Daily Report – May 28, 2020

14 Military Hospital Treatment Unit						
New admissions	Daily Discharges	Cumulative Recoveries	Daily Deaths	Cumulative Deaths	*Currently in treatment	Number of Vacant Beds
1	2	134	0	3	54	56

Demographic Breakdown of Cases at 14 Military Hospital											
Total Census	Total Adult	Total Children	Total Female	Total Male	Total Confirm	Others	Pregnant	Children			
								<1	1-5	6-10	11-17
54	46	8	16	38	51	4	1	1	2	1	4

*50 confirmed cases + 4 special cases = 54 total patients

Recoveries from Treatment Units (16 March – 28 May 2020)

COVID-19 Treatment Units				
Treatment Unit	New admissions	Cumulative admissions	Recoveries	Cumulative Recoveries
14 Military Hospital, Montserrado	1	192	2	134
Chief Jallahlone Hospital, Gbarpolu	0	1	0	0
Rally Time Hospital, Grand Kru	0	1	0	1
Jackson F. Doe Hospital, Nimba	0	1	0	0
Ganta Methodist Hospital, Nimba	0	1	0	1
Pleebo Health Center, Maryland	0	1	0	1
Fish Town Hospital, River Gee	0	1	0	1
Arcelor Mittal, Grand Bassa	0	4	0	0
Duside Hospital, Margibi	1	18	0	7
F. J. Grant Hospital, Sinoe	0	0	0	1
Total	2	220	2	146

Admissions, Currently in Treatment, and Discharges

COVID-19 Treatment Units									
Treatment Unit	New admissions	Cumulative admissions	Discharges	Cumulative Discharges	Currently in Treatment Unit	Total Males	Total Females	0-35 yrs	36+ yrs
Chief Jallahlone Hospital, Gbarpolu	0	1	0	0	1	0	1	1	0
Rally Time Hospital, Grand Kru	0	1	0	1	0	0	0	0	0
Jackson F. Doe Hospital, Nimba	0	1	1	1	0	0	0	0	0
Ganta Methodist Hospital, Nimba	0	1	0	1	0	0	0	0	0
Pleebo Health Center, Maryland	0	1	0	1	0	0	0	0	0
Fish Town Hospital, River Gee	0	1	0	1	0	0	0	0	0
Lofa	0	0	0	0	0	0	0	0	0
Arcelor Mittal, Grand Bassa	0	4	0	0	4	1	3	4	0
Duside Hospital, Margibi	0	17	5	12	5	3	2	2	3
F. J. Grant Hospital, Sinoe	0	1	0	1	0	0	0	0	0
Total	0	28	6	18	10	4	6	7	3

Note: Sinoe has not yet reported

Laboratory Samples Evaluated – May 28, 2020

Laboratory	Total	New Positive	Repeat Positive	Initial Negative	Repeat Test Negative	Pending Lab Result
NPHRL	53	4	1	37	3	8
Total	53	4	1	37	3	8

Summary of COVID-19 Contact Tracing in Response Counties

County	New Contacts Line listed	Cumulative Contacts	No. of Health Care Workers as Contacts	Cumulative no. of Health Care Workers as contacts	Contacts became a case	Cumulative contacts that became a case	Contacts Completed 14 Days	Cumulative Contacts Completing 14 Days	Contacts Under Follow-up	Contacts lost to Follow-up
Montserratado	13	2081	0	298	1	66	3	1702	323	3
Margibi	0	224	0	91	0	19	0	132	92	0
Grand Bassa	0	46	0	37	0	3	0	11	35	0
Maryland	0	52	0	16	0	0	0	52	0	0
River Gee	0	72	0	1	0	0	0	72	0	0
Sinoe	0	104	0	15	0	0	0	104	0	0
Grand Kru	0	98	0	0	0	1	0	98	0	1
Gbarpolu	0	47	0	12	0	6	0	9	38	0
Lofa	24	88	0	15	0	1	0	0	88	0
Nimba	0	335	0	25	0	1`	0	275	58	1
National	37	3147	0	510	1	96	3	2455	634	5

Note: Sinoe has not yet reported

**Data reconciliation is currently ongoing in Montserratado thereby leading to incomplete information on the county record. The national team is closely working with the county to resolve on the completion of the data cleaning*

Active Case Finding (16 March – 28 May 2020)

County	No. of communities Assigned	No. of communities Visited	No. of Households Assigned	No. of Households Visited	Sick persons Identified	Cumulative Sick persons identified	Sick persons referred for Investigation	Cumulative Sick person referred for Investigation	Sick persons Investigated	Cumulative Sick persons Investigated	Sick persons investigated and referred for testing	Cumulative Sick persons investigated and referred for testing	No. of Sick persons followed-up today	No. of supervision visits
Montserrado	250	0	0	2500	5	167	5	86	3	77	0	29		
Margibi	15	15	15	129	0	2	0	2	0	14	0	9	5	9
Maryland	9	9	23	23	0	0	0	0	0	0	0	0	0	2
River Gee														
Sinoe														
Grand Kru	9	9	317	317	0	0	0	0	0	0	0	0	0	4
Gbarpolu	13	13	1,170	117	4	7	4	7	4	7	0	0	0	0
Grand Bassa	14	13	201	197	0	0	0	0	0	0	0	0	0	10
Nimba	718	112	2500	900	0	0	0	0	0	0	0	0	0	5
Lofa	61	61	377	377	0	17	0	18	0	18	0	18	1	7
National	1089	232	4603	4560	9	193	9	113	7	116	0	56	6	37

Note: No report for Sinoe and River Gee up to now

Thank you for Listening