



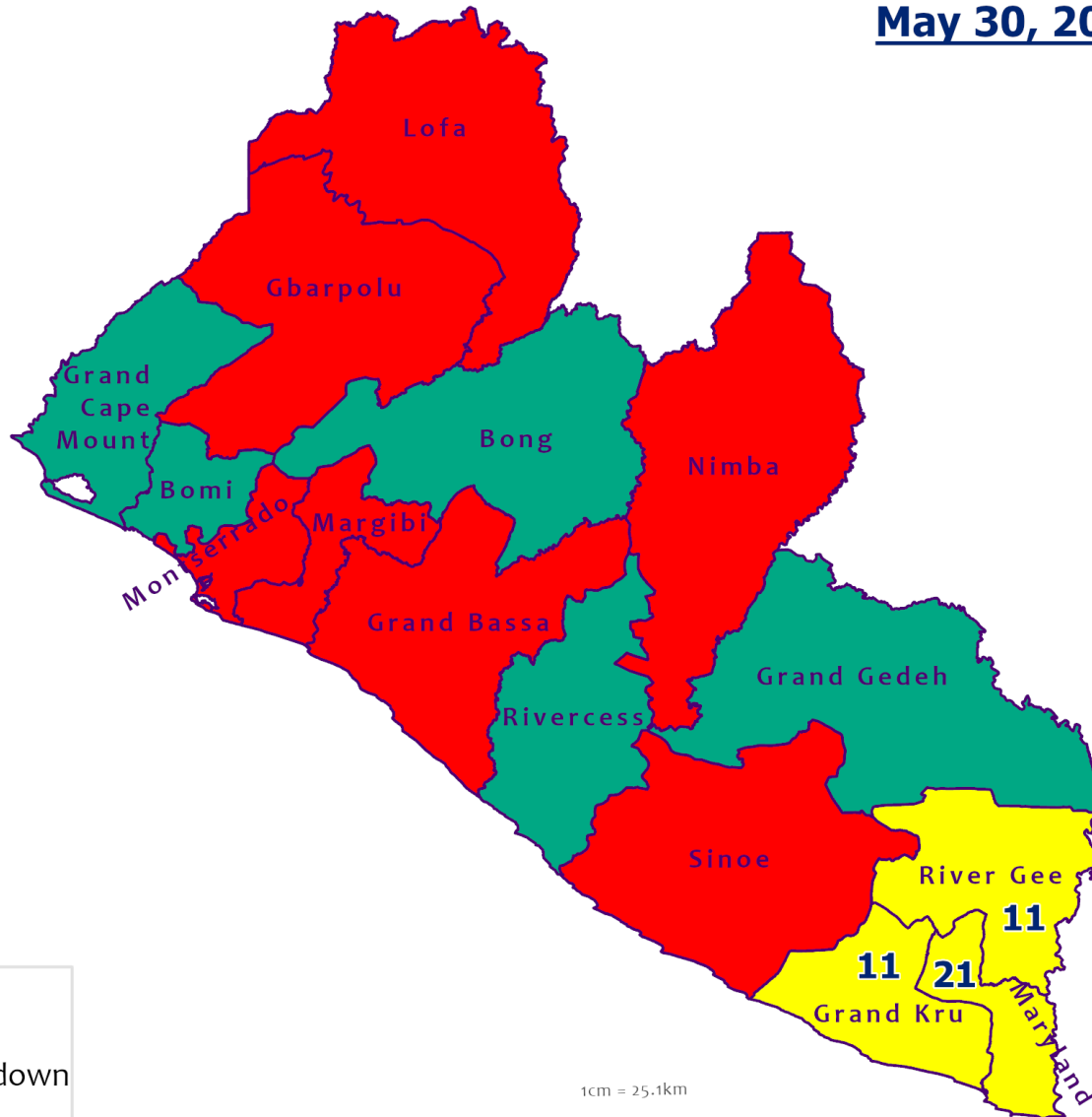
Liberia COVID-19 Daily Sitrep 76 (30th May 2020)

Summary of COVID-19 Cases by Reporting County, Liberia, 16 March – 30 May 2020

County	Laboratory Confirmed Cases	Confirmed Cases on Contact List	CUMULATIVE CASES
			Confirmed
Gbarpolu	0	0	6
Grand Bassa	0	0	6
Grand Kru	0	0	1
Lofa	0	0	3
Margibi	0	0	25
Maryland	0	0	1
Montserrado	8	0	236
Nimba	0	0	7
River Gee	0	0	1
Sinoe	0	0	2
NATIONAL	8	0	288



Counties COVID-19 Status in Liberia May 30, 2020



County Status

- Preparedness
- 28-Day Countdown
- Response

1cm = 25.1km

0 15 30 60 90
Kilometers



Data Source: NPHIL/MoH

Demographic Breakdown (Gender & Age) of Confirmed COVID-19 Cases (March 16 – 30 May 2020)

County	<15 years		15 - 34		35 - 54		55+		All ages		Total Confirmed
	M	F	M	F	M	F	M	F	M	F	
Gbarpolu	1	2	0	0	1	1	1	0	3	3	6
Grand Bassa	1	0	1	4	0	0	0	0	2	4	6
Grand Kru	0	0	1	0	0	0	0	0	1	0	1
Lofa	0	0	0	0	1	0	2	0	3	0	3
Margibi	2	1	0	5	5	4	4	4	11	14	25
Maryland	0	0	1	0	0	0	0	0	1	0	1
Montserrado	10	11	41	26	73	28	33	14	157	79	236
Nimba	0	0	0	0	4	2	1	0	5	2	7
River Gee	0	0	0	0	1	0	0	0	1	0	1
Sinoe	0	0	0	0	2	0	0	0	2	0	2
National	14	14	44	35	87	35	41	18	186	102	288

Demographic Breakdown (Gender & Age) of Confirmed COVID-19 Deaths (March 16 – 30 May 2020)

County	<15 years		15 - 34		35 - 54		55+		All ages		Total Confirmed
	M	F	M	F	M	F	M	F	M	F	
Gbarpolu	0	0	0	0	1	0	1	0	2	0	2
Grand Bassa	0	0	0	0	0	0	0	0	0	0	0
Grand Kru	0	0	0	0	0	0	0	0	0	0	0
Lofa	0	0	0	0	0	0	2	0	2	0	2
Margibi	0	0	0	0	0	0	0	1	0	1	1
Maryland	0	0	0	0	0	0	0	0	0	0	0
Montserrado	0	0	0	0	8	3	5	2	13	5	18
Nimba	0	0	0	0	2	1	1	0	3	1	4
River Gee	0	0	0	0	0	0	0	0	0	0	0
Sinoe	0	0	0	0	0	0	0	0	0	0	0
National	0	0	0	0	11	4	9	3	20	7	27

Summary of COVID-19 Deaths by Reporting County, Liberia, 16 March – 30 May 2020

County	DAILY REPORT								Cumulative Deaths
	New Suspected Deaths	Laboratory Confirmed Deaths						Confirmed Deaths on Contact List	
		COVID-19 Treatment Unit	Total in COVID-19 Treatment Unit	Health Facility	Total in Health Facility	Community	Total in Community		
Gbarpolu	0	0	0	0	2	0	0	0	2
Grand Bassa	0	0	0	0	0	0	0	0	0
Grand Kru	0	0	0	0	0	0	0	0	0
Lofa	0	0	0	0	1	0	1	0	2
Maryland	0	0	0	0	0	0	0	0	0
Margibi	0	0	0	0	1	0	0	0	1
Montserrado	0	0	3	0	4	0	11	0	17
Nimba	0	0	0	0	3	0	1	0	4
River Gee	0	0	0	0	0	0	0	0	0
Sinoe	0	0	0	0	0	0	0	0	0
National	0	0	3	0	11	0	13	0	27

Daily and Cumulative Healthcare Worker (HCW) COVID-19 Cases and Deaths by County, Liberia, 16 March – 30 May 2020

County	DAILY REPORT						CUMULATIVE CASES (ALIVE & DEAD)	
	New Suspected & High Risk Cases (Alive)			New Suspect Death	Laboratory Confirmed Cases	Confirmed Cases on Contact List	Confirmed	Deaths
	Suspect	High Risk	Total					
Gbarpolu	0	0	0	0	0	0	1	1
Grand Bassa	0	0	0	0	0	0	0	0
Grand Kru	0	0	0	0	0	0	0	0
Lofa	0	0	0	0	0	0	0	0
Margibi	0	0	0	0	0	0	9	1
Maryland	0	0	0	0	0	0	0	0
Montserrado	0	0	0	0	0	0	34	1
Nimba	0	0	0	0	0	0	0	0
River Gee	0	0	0	0	0	0	0	0
Sinoe	0	0	0	0	0	0	0	0
NATIONAL	0	0	0	0	0	0	44	3

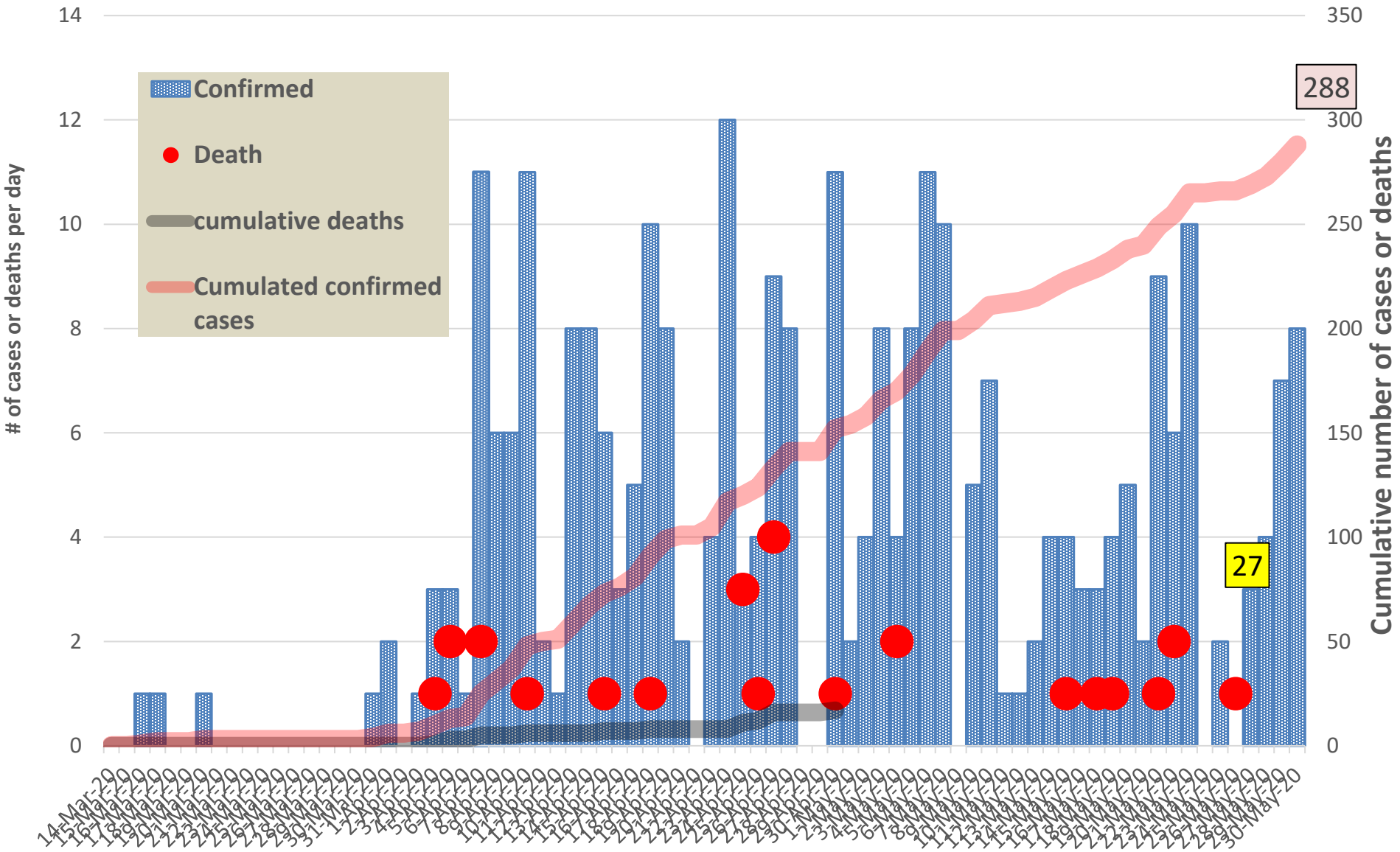
Cadre Cases and Deaths by Health Care Workers (16 March – 30 May 2020)

Health Care Worker Cadre	Montserratado		Margibi		Nimba		River Gee		Sinoe		Grand Kru		Gbarpolu		Lofa		Grand Bassa		National (Total)	
	Cases	Deaths	Cases	Deaths	Cases	Deaths	Cases	Deaths	Cases	Deaths	Cases	Deaths	Cases	Deaths	Cases	Deaths	Cases	Deaths	Cases	Deaths
Doctors	5	0	0	0	0	0	0	0	0	0	0	0	0	0	0	0	0	0	5	0
Pharmacists	1	0	0	0	0	0	0	0	0	0	0	0	0	0	0	0	0	0	1	0
Nurses	15	1	3	0	0	0	0	0	0	0	0	0	1	1	0	0	0	0	19	2
Radiologist	1	0	0	0	0	0	0	0	0	0	0	0	0	0	0	0	0	0	1	0
Physician Assistants	0	0	0	0	0	0	0	0	0	0	0	0	0	0	0	0	0	0	0	0
Lab Technician	3	0	1	0	0	0	0	0	0	0	0	0	0	0	0	0	0	0	4	0
Environmental Health Technicians	6	0	0	0	0	0	0	0	0	0	0	0	0	0	0	0	0	0	6	0
Microbiologist	1	0	0	0	0	0	0	0	0	0	0	0	0	0	0	0	0	0	1	0
Epidemiologist	1	0	0	0	0	0	0	0	0	0	0	0	0	0	0	0	0	0	1	0
Dieticians	0	0	5	1	0	0	0	0	0	0	0	0	0	0	0	0	0	0	5	1
Psychosocial Worker	1	0	0	0	0	0	0	0	0	0	0	0	0	0	0	0	0	0	1	0
Total:	34	1	9	1	0	0	0	0	0	0	0	0	1	1	0	0	0	0	44	3

Suspected and High Risk Cases and Deaths (16 March – 30 May 2020)

County	New Suspected	Cumulative Suspected	New High Risk	Cumulative High Risk	New Suspected Deaths	Cumulative Suspected Deaths
Montserrado	43	1591	0		1	67
Margibi	0	2	0	24	0	1
Maryland	0	14	0	12	0	2
River Gee	0	5	0	8	0	0
Lofa	2	20	0	33	0	18
Sinoe	0	29	0	43	1	1
Grand Kru	4	13	0	21	1	1
Gbarpolu	0	9	0	6	0	0
Grand Bassa	0	40	20	29	0	0
Nimba	2	46	0	84	1	10
National	51	1769	20	260	4	100

EPI-Curve of Confirmed Cases and Deaths



COVID-19 Cases in Liberia - May 30, 2020

Total Cases: **288**

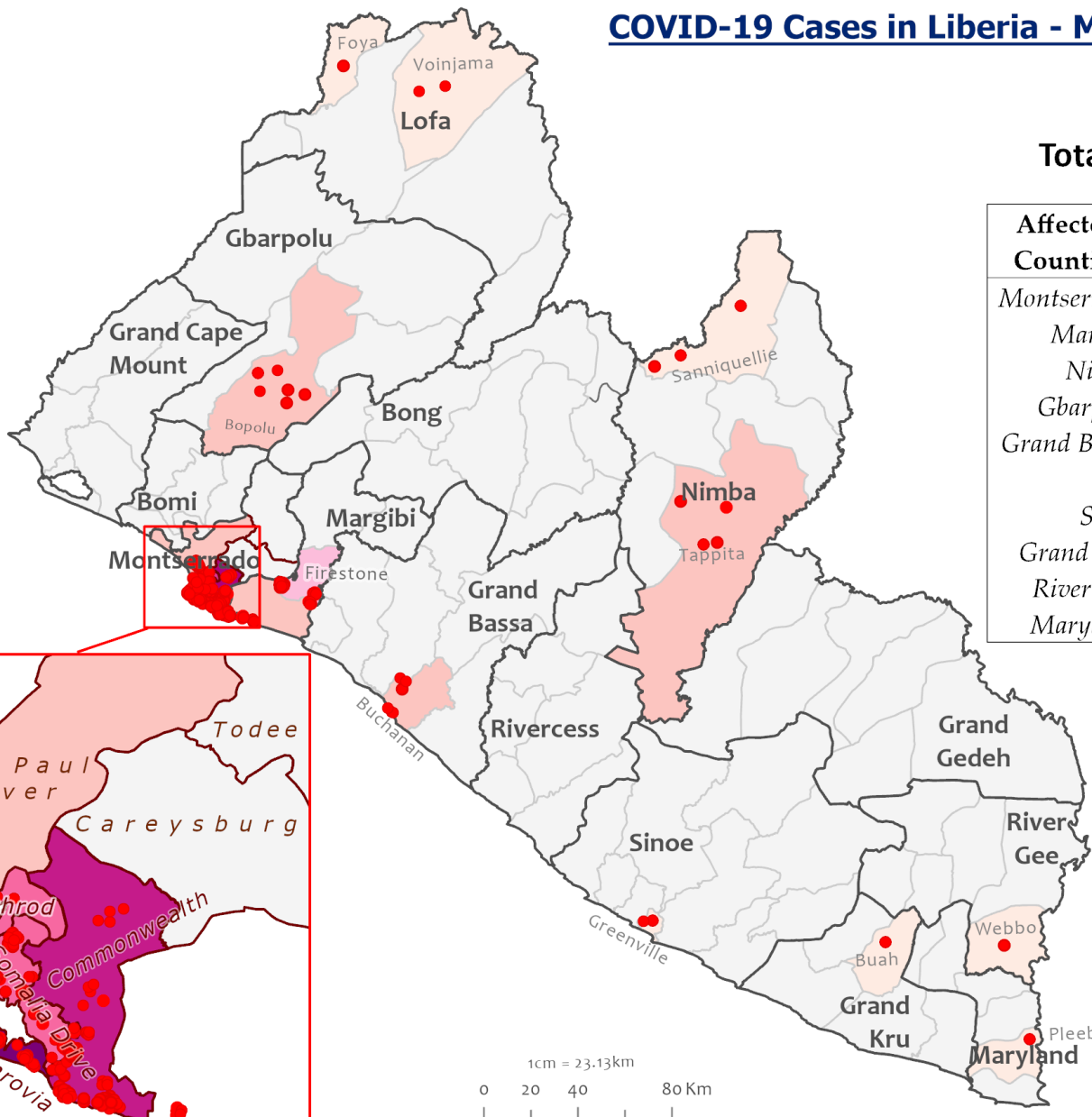
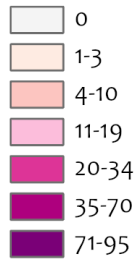


Legend

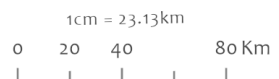
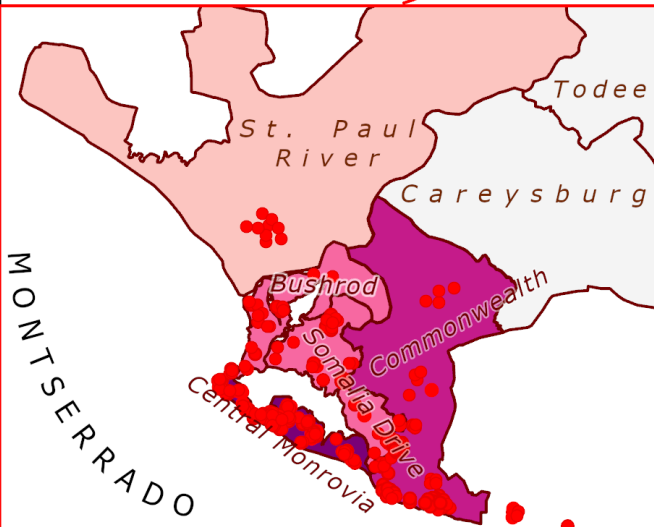
Confirmed Cases



Cases / District



Affected Counties	Cumulative Cases
Montserrado	236
Margibi	25
Nimba	7
Gbarpolu	6
Grand Bassa	6
Lofa	3
Sinoe	2
Grand Kru	1
River Gee	1
Maryland	1



Data Source: NPHIL/MoH

COVID-19 Cases in Montserrado, Liberia - May 30, 2020



Legend

Confirmed Cases



Cases / Zone (District)



0



1-5



6-10



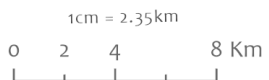
11-18



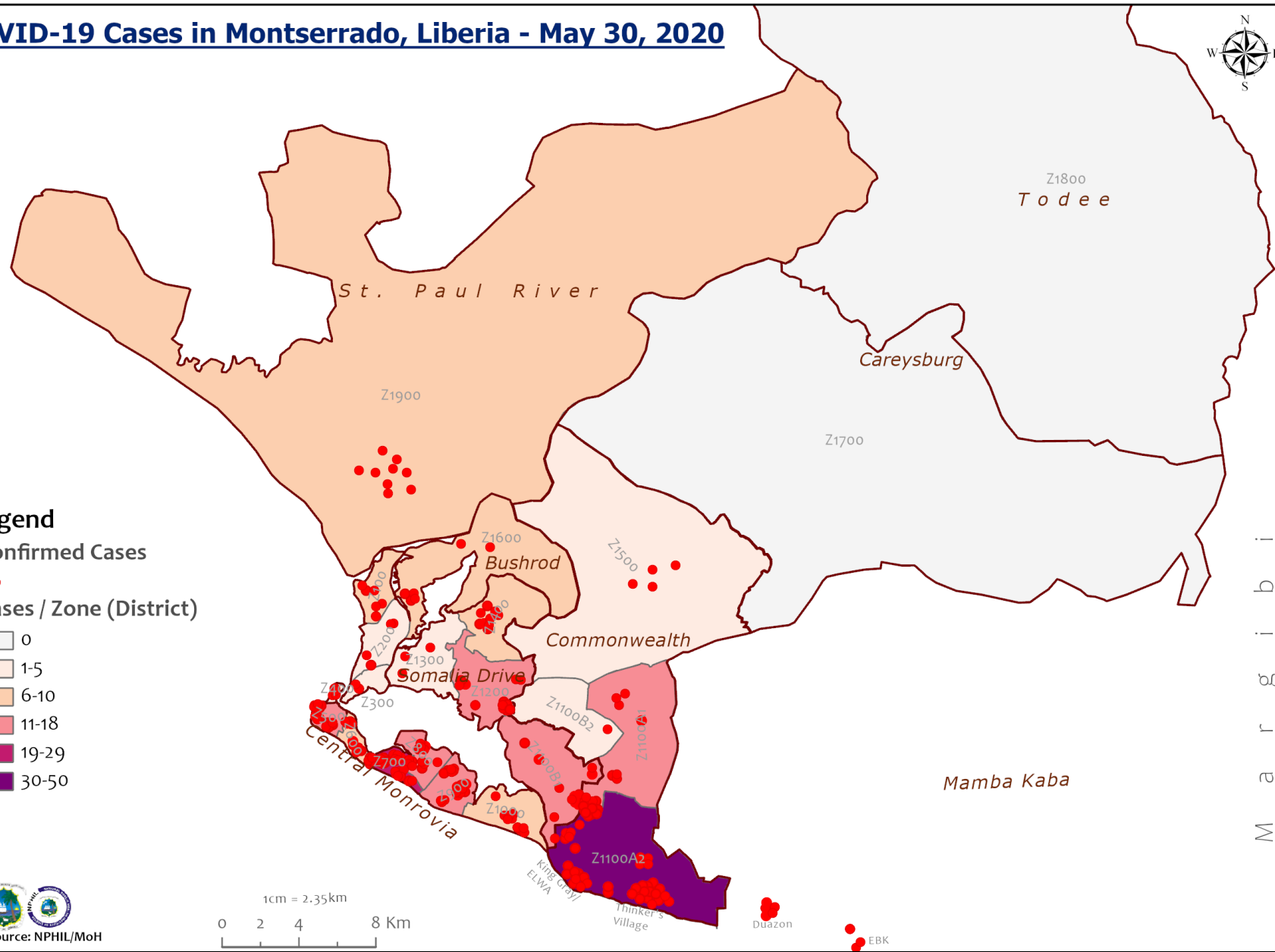
19-29



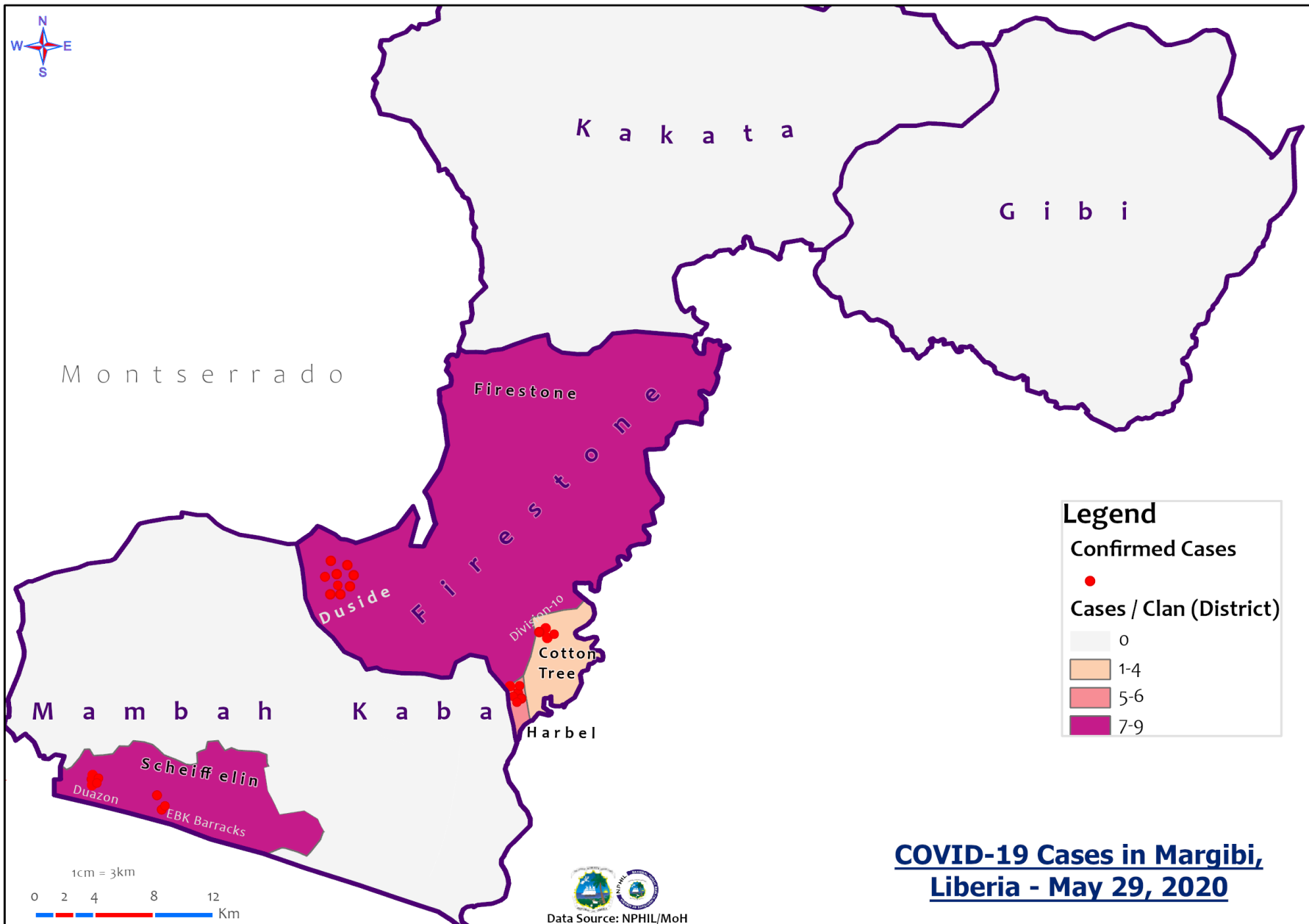
30-50



Data Source: NPHIL/MoH

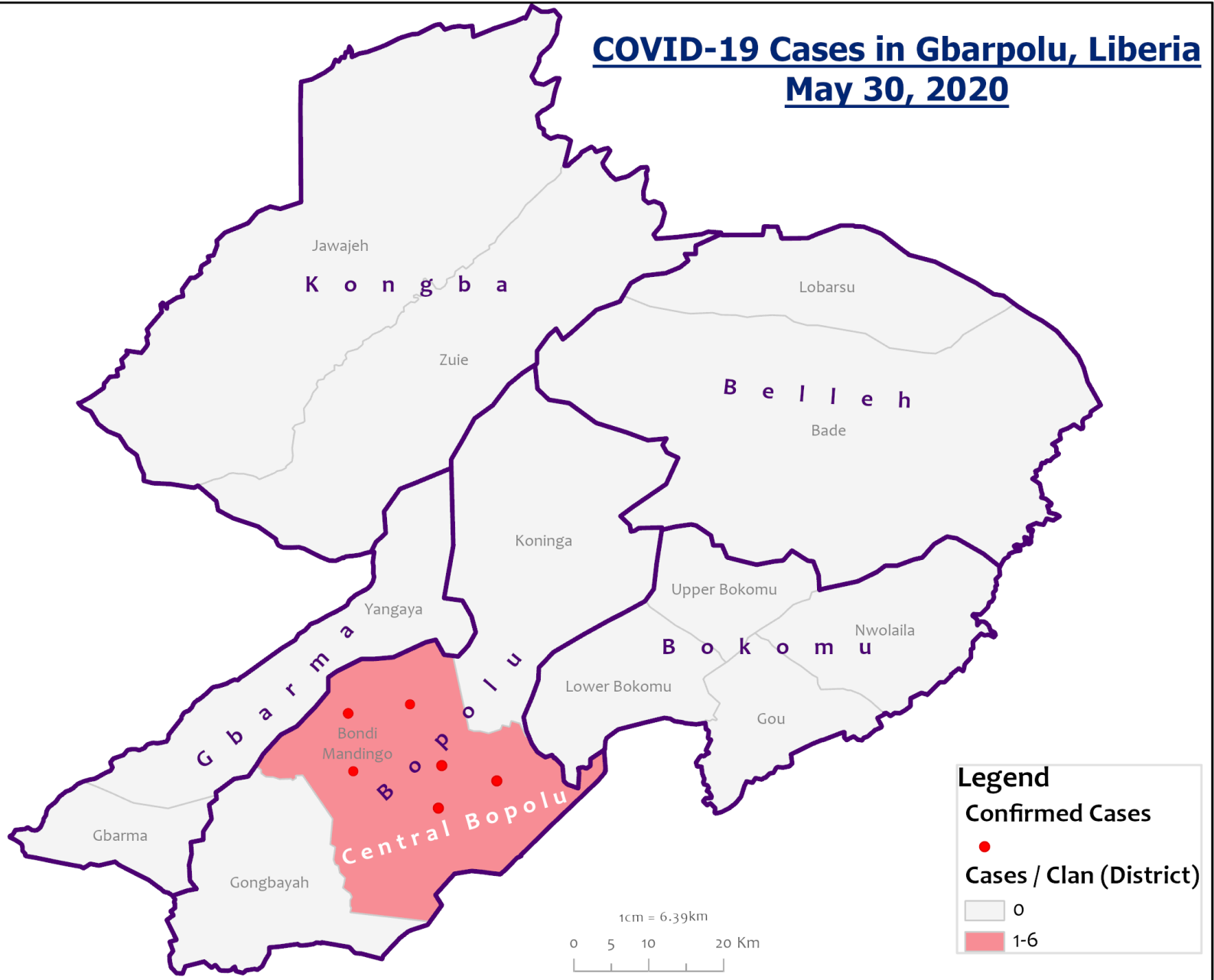


M
a
r
g
i
n
a

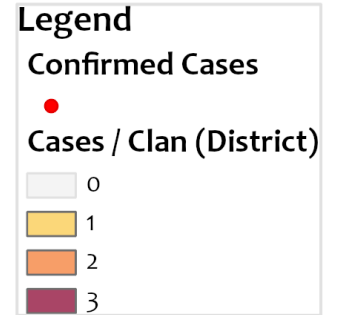
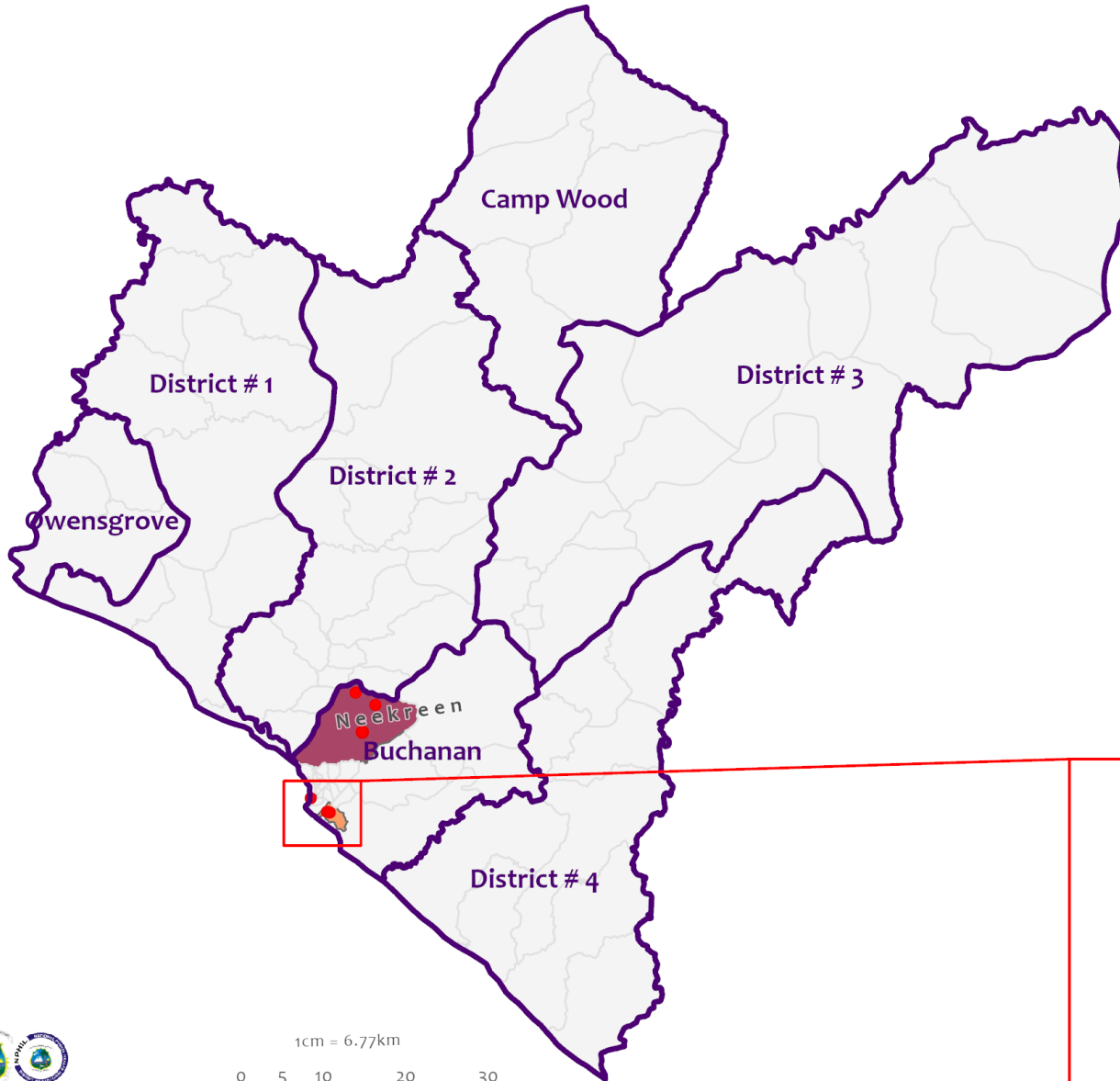




COVID-19 Cases in Gbarpolu, Liberia May 30, 2020



COVID-19 Cases in Grand Bassa, Liberia - May 30, 2020



Data Source: NPHIL/MoH

Precautionary Observation Centers (POC): Admission and Discharges

County	Precautionary Observation Centers				Cumulative Move to Treatment
	New admissions	Currently in POC	Daily Discharges	Cumulative Discharges (not including transferred)	
Gbarpolu	0	0	0	0	0
Grand Bassa	1	3	8	8	1
Grand Kru	0	0	0	16	0
Margibi	0	15	0	44	0
Maryland	0	4	0	35	0
Montserrado	0	36	0	58	0
Nimba	0	13	0	17	0
River Gee	0	0	0	0	0
Sinoe	0	6	0	104	1
Lofa	1	47	0	0	0
NATIONAL	2	124	8	282	2

Treatment Unit Daily Report – May 30, 2020

14 Military Hospital Treatment Unit						
New admissions	Daily Discharges	Cumulative Recoveries	Daily Deaths	Cumulative Deaths	*Currently in treatment	Number of Vacant Beds
4	0	136	0	3	58	52

Demographic Breakdown of Cases at 14 Military Hospital											
Total Census	Total Adult	Total Children	Total Female	Total Male	Total Confirm	Others	Pregnant	Children			
								<1	1-5	6-10	11-17
58	50	8	18	40	54	4	1	1	2	1	4

*54 confirmed cases + 4 special cases = 58 total patients

Recoveries from Treatment Units (16 March – 30 May 2020)

Treatment Unit	New admissions	Cumulative admissions	Recoveries	Cumulative Recoveries
14 Military Hospital, Montserrado	4	194	0	136
Chief Jallahlone Hospital, Gbarpolu	0	1	0	0
Rally Time Hospital, Grand Kru	0	1	0	1
Jackson F. Doe Hospital, Nimba	0	1	0	1
Ganta Methodist Hospital, Nimba	0	1	0	1
Pleebo Health Center, Maryland	0	1	0	1
Fish Town Hospital, River Gee	0	1	0	1
Arcelor Mittal, Grand Bassa	0	4	3	3
Duside Hospital, Margibi	0	17	0	12
F. J. Grant Hospital, Sinoe	0	2	0	1
Total	4	223	3	157

Admissions, Currently in Treatment, and Discharges

COVID-19 Treatment Units									
Treatment Unit	New admissions	Cumulative admissions	Discharges	Cumulative Discharges	Currently in Treatment Unit	Total Males	Total Females	0-35 yrs	36+ yrs
Chief Jallahlone Hospital, Gbarpolu	0	1	0	0	1	0	1	1	0
Rally Time Hospital, Grand Kru	0	1	0	1	0	0	0	0	0
Jackson F. Doe Hospital, Nimba	0	1	0	1	0	0	0	0	0
Ganta Methodist Hospital, Nimba	0	1	0	1	0	0	0	0	0
Pleebo Health Center, Maryland	0	1	0	1	0	0	0	0	0
Fish Town Hospital, River Gee	0	1	0	1	0	0	0	0	0
Tellewoyan Hospital, Lofa	0	1	0	0	1	1	0	0	1
Arcelor Mittal, Grand Bassa	0	5	3	3	2	1	1	2	0
Duside Hospital, Margibi	0	17	0	12	5	3	2	2	3
F. J. Grant Hospital, Sinoe	0	2	0	1	1	1	0	0	1
Total	0	31	3	21	10	6	4	5	5

Laboratory Samples Evaluated – May 30, 2020

Laboratory	Total	New Positive	Repeat Positive	Initial Negative	Repeat Test Negative	Pending Lab Result
NPHRL	183	8	3	143	19	10
Total	183	8	3	143	19	10

Summary of COVID-19 Contact Tracing in Response Counties

County	New Contacts Line listed	Cumulative Contacts	No. of Health Care Workers as Contacts	Cumulative no. of Health Care Workers as contacts	Contacts became a case	Cumulative contacts that became a case	Contacts Completed 14 Days	Cumulative Contacts Completing 14 Days	Contacts Under Follow-up	Contacts lost to Follow-up
Montserrado	18	2099	0	298	0	66	0	1702	341	3
Margibi	0	270	0	91	0	19	0	132	138	0
Grand Bassa	25	71	22	58	0	5	8	43	31	27
Maryland	0	52	0	16	0	0	0	52	0	0
River Gee	0	72	0	1	0	0	0	72	0	0
Sinoe	0	125	0	15	0	0	0	104	21	0
Grand Kru	0	98	0	0	0	1	0	98	0	1
Gbarpolu	0	47	0	12	0	6	5	16	31	0
Lofa	16	114	12	27	0	2	0	0	112	0
Nimba	21	356	0	25	0	1	0	275	79	1
National	80	3304	34	543	0	100	13	2494	753	32

**Data reconciliation is currently ongoing in Montserrado thereby leading to incomplete information on the county record. The national team is closely working with the county to resolve on the completion of the data cleaning*

Active Case Finding (16 March – 30 May 2020)

County	Visitation				Identification, Investigation & Testing								Supervision		
	No. of communities Assigned	No. of communities Visited	No. of Households Assigned	No. of Households Visited	Sick persons Identified	Cumulative Sick persons identified	Sick persons referred for Investigation	Cumulative Sick person referred for Investigation	Sick persons Investigated	Cumulative Sick persons Investigated	Sick persons investigated and referred for testing	Cumulative Sick persons investigated and referred for testing	No. of Sick persons followed-up today	No. of supervision visits	No. of Supervisory Calls
Montserratado															
Margibi	15	15	15	127	0	3	0	3	0	15	0	10	5	7	10
Maryland	9	9	23	23	0	0	0	0	0	0	0	0	0	2	9
River Gee															
Sinoe	19	19	0	0	0	0	0	0	0	0	0	0	0	7	3
Grand Kru	9	9	317	317	0	0	0	0	0	0	0	0	0	4	7
Gbarpolu	13	12	1,170	142	0	9	0	9	2	9	0	0	0	3	0
Grand Bassa															
Nimba	718	176	1980	987	1	3	1	3	1	3	1	3	0	7	12
Lofa	214	214	692	692	2	21	2	21	2	21	2	21	2	14	51
National	997	454	4197	2288	3	36	3	36	5	48	3	34	7	44	92

Thank you for Listening