



Liberia COVID-19 Daily Sitrep 81 (04th June 2020)

Summary of COVID-19 Cases by Reporting County, Liberia, 16 March – 04 June 2020

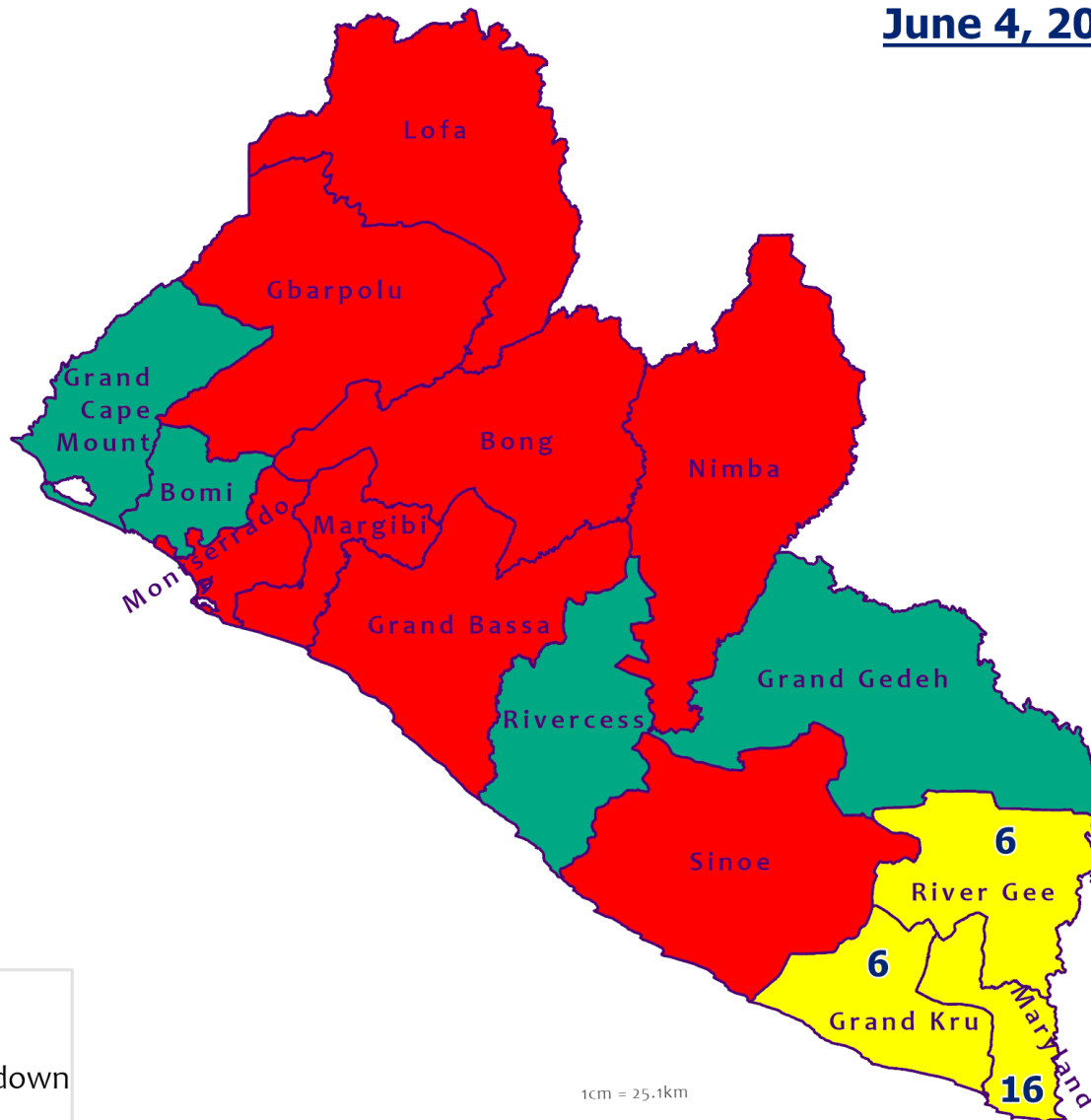
County	Laboratory Confirmed Cases	Confirmed Cases on Contact List	CUMULATIVE CASES
			Confirmed
Bong	1	0	1
Gbarpolu	0	0	7
Grand Bassa	0	0	6
Grand Kru	0	0	1
Lofa	0	0	3
Margibi	0	0	25
Maryland	0	0	1
Montserrado	12	0	280
Nimba	0	0	7
River Gee	0	0	1
Sinoe	0	0	2
NATIONAL	13	0	334

Demographic Breakdown (Gender & Age) of Confirmed COVID-19 Cases (March 16 – 04 June 2020)

County	<15 years		15 - 34		35 - 54		55+		All ages		Total Confirmed
	M	F	M	F	M	F	M	F	M	F	
Bong	0	0	0	0	1	0	0	0	1	0	1
Gbarpolu	1	2	0	1	1	1	1	0	3	4	7
Grand Bassa	1	0	1	4	0	0	0	0	2	4	6
Grand Kru	0	0	1	0	0	0	0	0	1	0	1
Lofa	0	0	0	0	1	0	2	0	3	0	3
Margibi	2	1	0	5	5	4	4	4	11	14	25
Maryland	0	0	1	0	0	0	0	0	1	0	1
Montserrado	10	12	63	36	81	29	35	14	189	91	280
Nimba	0	0	0	0	4	2	1	0	5	2	7
River Gee	0	0	0	0	1	0	0	0	1	0	1
Sinoe	0	0	0	0	2	0	0	0	2	0	2
National	14	15	66	46	96	36	43	18	219	115	334



Counties COVID-19 Status in Liberia June 4, 2020



County Status

- Preparedness
- 28-Day Countdown
- Response

1cm = 25.1km

0 15 30 60 90
Kilometers



Data Source: NPHIL/MoH

Demographic Breakdown (Gender & Age) of Confirmed COVID-19 Deaths (March 16 – 04 June 2020)

County	<15 years		15 - 34		35 - 54		55+		All ages		Total Confirmed
	M	F	M	F	M	F	M	F	M	F	
Bong	0	0	0	0	0	0	1	0	1	0	1
Gbarpolu	0	0	0	0	1	0	1	0	2	0	2
Grand Bassa	0	0	0	0	0	0	0	0	0	0	0
Grand Kru	0	0	0	0	0	0	0	0	0	0	0
Lofa	0	0	0	0	0	0	2	0	2	0	2
Margibi	0	0	0	0	0	0	0	1	0	1	1
Maryland	0	0	0	0	0	0	0	0	0	0	0
Montserrado	0	0	0	0	8	4	6	2	14	6	20
Nimba	0	0	0	0	2	1	1	0	3	1	4
River Gee	0	0	0	0	0	0	0	0	0	0	0
Sinoe	0	0	0	0	0	0	0	0	0	0	0
National	0	0	0	0	11	5	11	3	22	8	30

Summary of COVID-19 Deaths by Reporting County, Liberia, 16 March – 04 June 2020

County	DAILY REPORT								Cumulative Deaths
	New Suspected Deaths	Laboratory Confirmed Deaths						Confirmed Deaths on Contact List	
		COVID-19 Treatment Unit	Total in COVID-19 Treatment Unit	Health Facility	Total in Health Facility	Community	Total in Community		
Bong	0	0	0	0	0	1	1	0	1
Gbarpolu	0	0	0	0	2	0	0	0	2
Grand Bassa	0	0	0	0	0	0	0	0	0
Grand Kru	0	0	0	0	0	0	0	0	0
Lofa	0	0	0	0	2	0	1	0	3
Maryland	0	0	0	0	0	0	0	0	0
Margibi	0	0	0	0	1	0	0	0	1
Montserrado	0	0	4	1	5	0	11	0	20
Nimba	0	0	0	0	3	0	1	0	4
River Gee	0	0	0	0	0	0	0	0	0
Sinoe	0	0	0	0	0	0	0	0	0
National	0	0	4	1	12	1	14	0	30

The Liberia Case Fatality rate (CFR) officially considered is for deaths that occurred among patients in care at the COVID-19 treatment units across the country. As of 1 June 2020 , a total of 4 deaths have been recorded CFR=1.63%. The country is however keeping active surveillance on community deaths and deaths in non COVID-19 treatment health units.

Daily and Cumulative Healthcare Worker (HCW) COVID-19 Cases and Deaths by County, Liberia, 16 March – 04 June 2020

County	DAILY REPORT						CUMULATIVE CASES (ALIVE & DEAD)	
	New Suspected & High Risk Cases (Alive)			New Suspect Death	Laboratory Confirmed Cases	Confirmed Cases on Contact List	Confirmed	Deaths
	Suspect	High Risk	Total					
Bong	0	0	0	0	0	0	0	0
Gbarpolu	0	0	0	0	0	0	1	1
Grand Bassa	0	0	0	0	0	0	0	0
Grand Kru	0	0	0	0	0	0	0	0
Lofa	0	0	0	0	0	0	0	0
Margibi	0	0	0	0	0	0	9	1
Maryland	0	0	0	0	0	0	0	0
Montserrado	0	0	0	0	0	0	35	1
Nimba	0	0	0	0	0	0	0	0
River Gee	0	0	0	0	0	0	0	0
Sinoe	0	0	0	0	0	0	0	0
NATIONAL	0	0	0	0	0	0	45	3

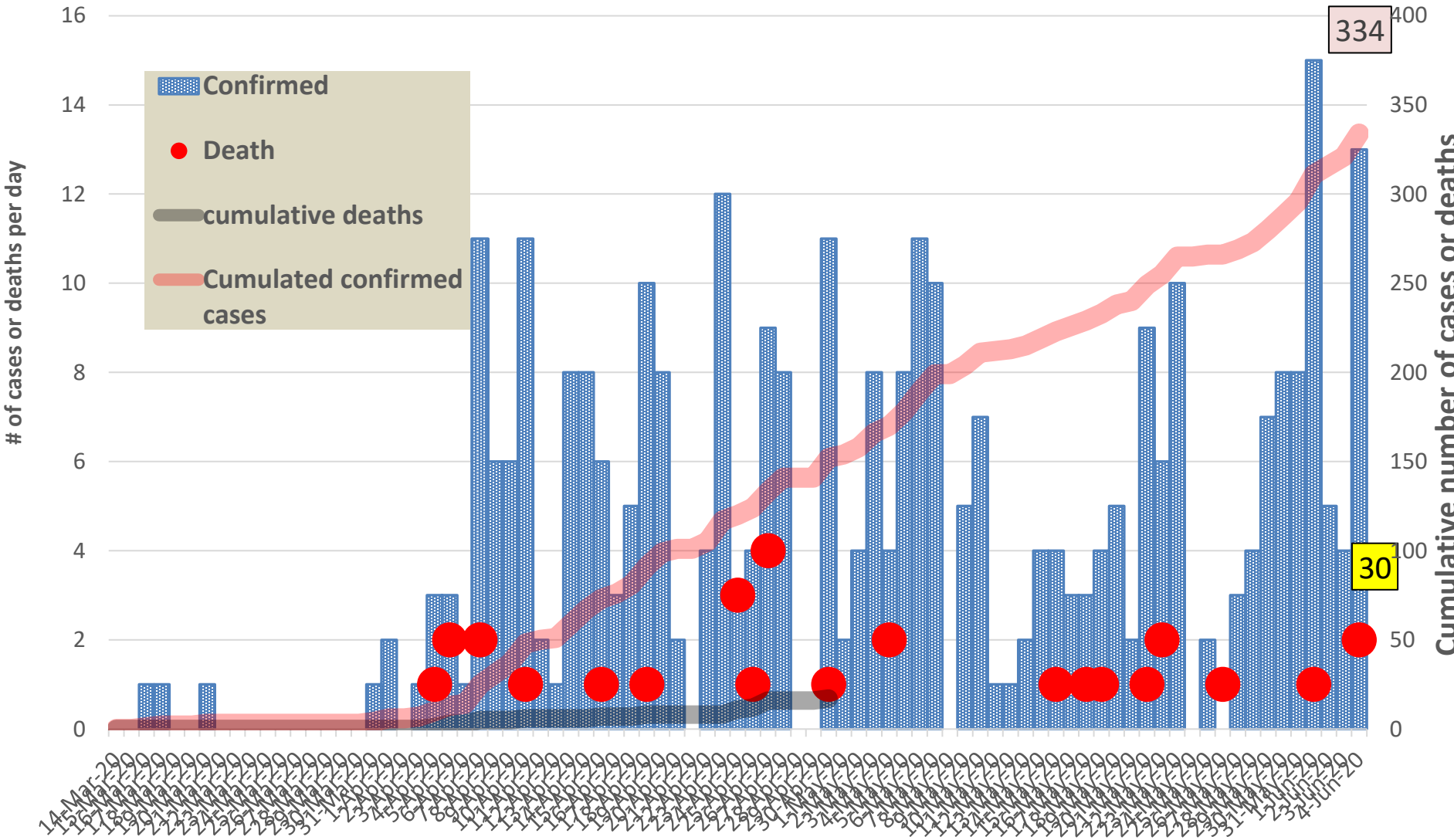
Cadre Cases and Deaths by Health Care Workers (16 March – 04 June 2020)

Health Care Worker Cadre	Montserratado		Margibi		Nimba		River Gee		Sinoe		Grand Kru		Gbarpolu		Lofa		Grand Bassa		National (Total)	
	Cases	Deaths	Cases	Deaths	Cases	Deaths	Cases	Deaths	Cases	Deaths	Cases	Deaths	Cases	Deaths	Cases	Deaths	Cases	Deaths	Cases	Deaths
Doctors	5	0	0	0	0	0	0	0	0	0	0	0	0	0	0	0	0	0	5	0
Pharmacists	1	0	0	0	0	0	0	0	0	0	0	0	0	0	0	0	0	0	1	0
Nurses	15	1	3	0	0	0	0	0	0	0	0	0	1	1	0	0	0	0	19	2
Radiologist	1	0	0	0	0	0	0	0	0	0	0	0	0	0	0	0	0	0	1	0
Physician Assistants	0	0	0	0	0	0	0	0	0	0	0	0	0	0	0	0	0	0	0	0
Lab Technician	4	0	1	0	0	0	0	0	0	0	0	0	0	0	0	0	0	0	5	0
Environmental Health Technicians	6	0	0	0	0	0	0	0	0	0	0	0	0	0	0	0	0	0	6	0
Microbiologist	1	0	0	0	0	0	0	0	0	0	0	0	0	0	0	0	0	0	1	0
Epidemiologist	1	0	0	0	0	0	0	0	0	0	0	0	0	0	0	0	0	0	1	0
Dieticians	0	0	5	1	0	0	0	0	0	0	0	0	0	0	0	0	0	0	5	1
Psychosocial Worker	1	0	0	0	0	0	0	0	0	0	0	0	0	0	0	0	0	0	1	0
Total:	35	1	9	1	0	0	0	0	0	0	0	0	1	1	0	0	0	0	45	3

Suspected and High Risk Cases and Deaths (16 March – 04 June 2020)

County	New Suspected	Cumulative Suspected	New High Risk	Cumulative High Risk	New Suspected Deaths	Cumulative Suspected Deaths
Montserrado	279	2859			0	71
Margibi	0	3	0	24	0	1
Maryland	1	16	0	12	1	3
River Gee	0	5	0	8	0	0
Lofa	0	23	0	33	0	22
Sinoe	1	30	0	43	0	1
Grand Kru	0	13	0	21	0	1
Gbarpolu	0	9	0	6	0	0
Grand Bassa	0	40	2	31	0	0
Nimba	0	47	0	84	0	10
National	281	3045	2	262	1	109

EPI-Curve of Confirmed Cases and Deaths



COVID-19 Cases in Liberia - June 4, 2020

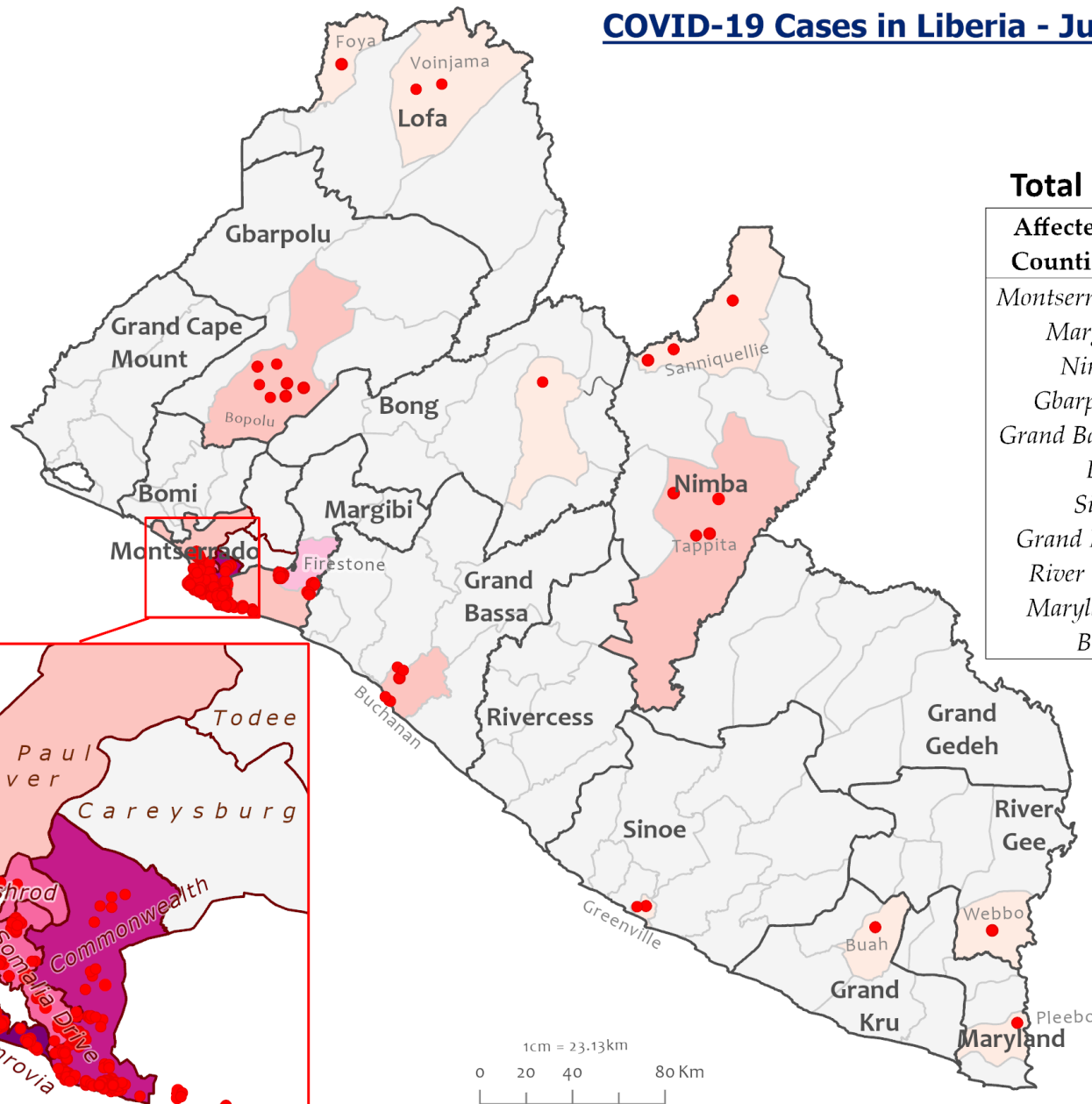
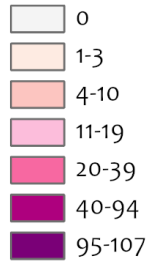


Legend

Confirmed Cases

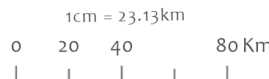
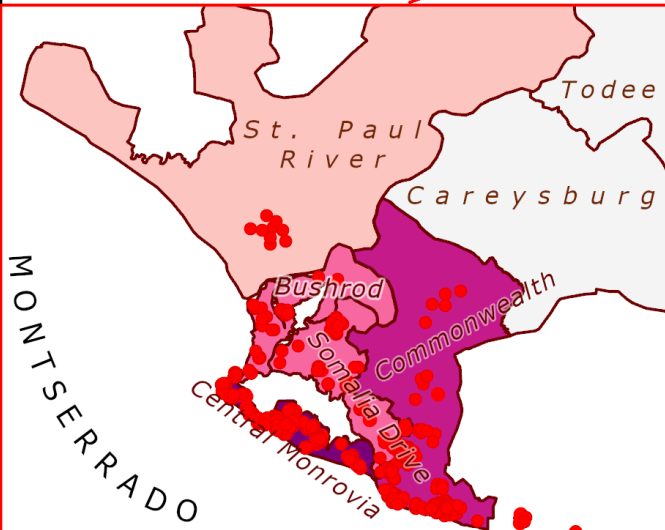


Cases / District



Total Cases: 334

Affected Counties	Cumulative Cases
Montserrado	280
Margibi	25
Nimba	7
Gbarpolu	7
Grand Bassa	6
Lofa	3
Sinoe	2
Grand Kru	1
River Gee	1
Maryland	1
Bong	1



Data Source: NPHIL/MoH

COVID-19 Cases in Montserrado, Liberia - June 4, 2020



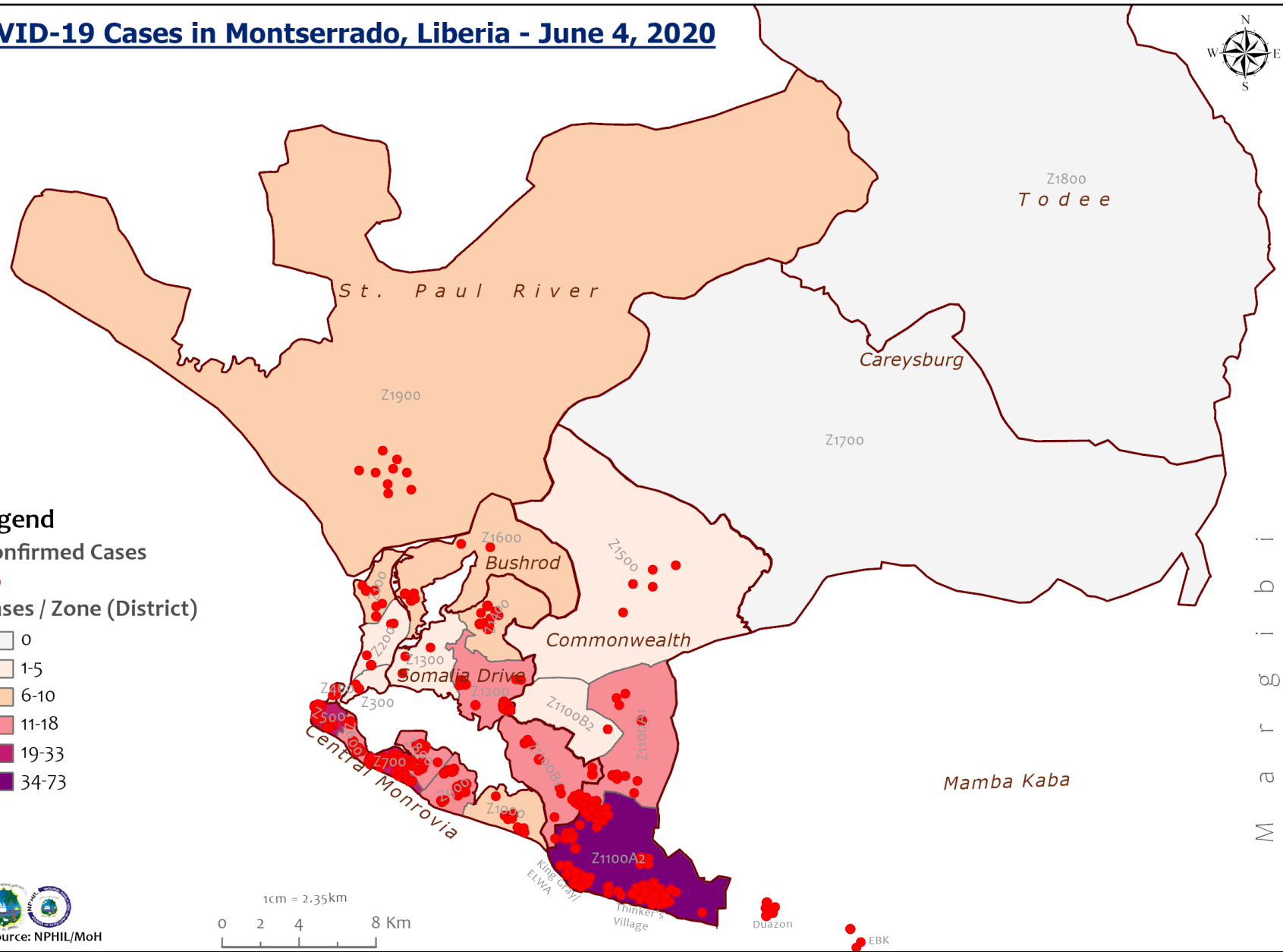
Legend

Confirmed Cases



Cases / Zone (District)

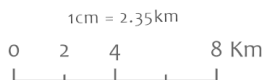
- 0
- 1-5
- 6-10
- 11-18
- 19-33
- 34-73

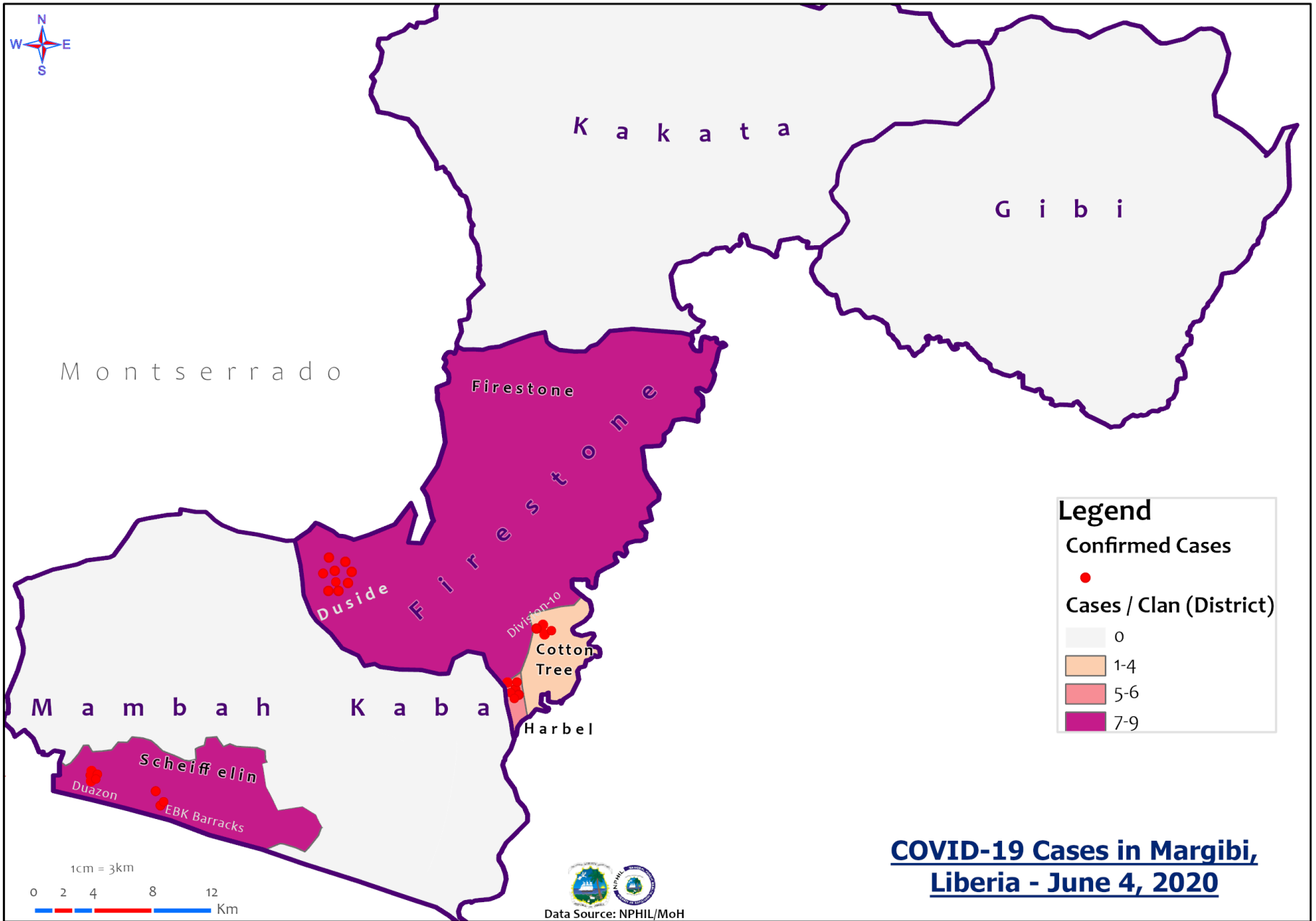


M a r 2 0 2 0



Data Source: NPHIL/MoH

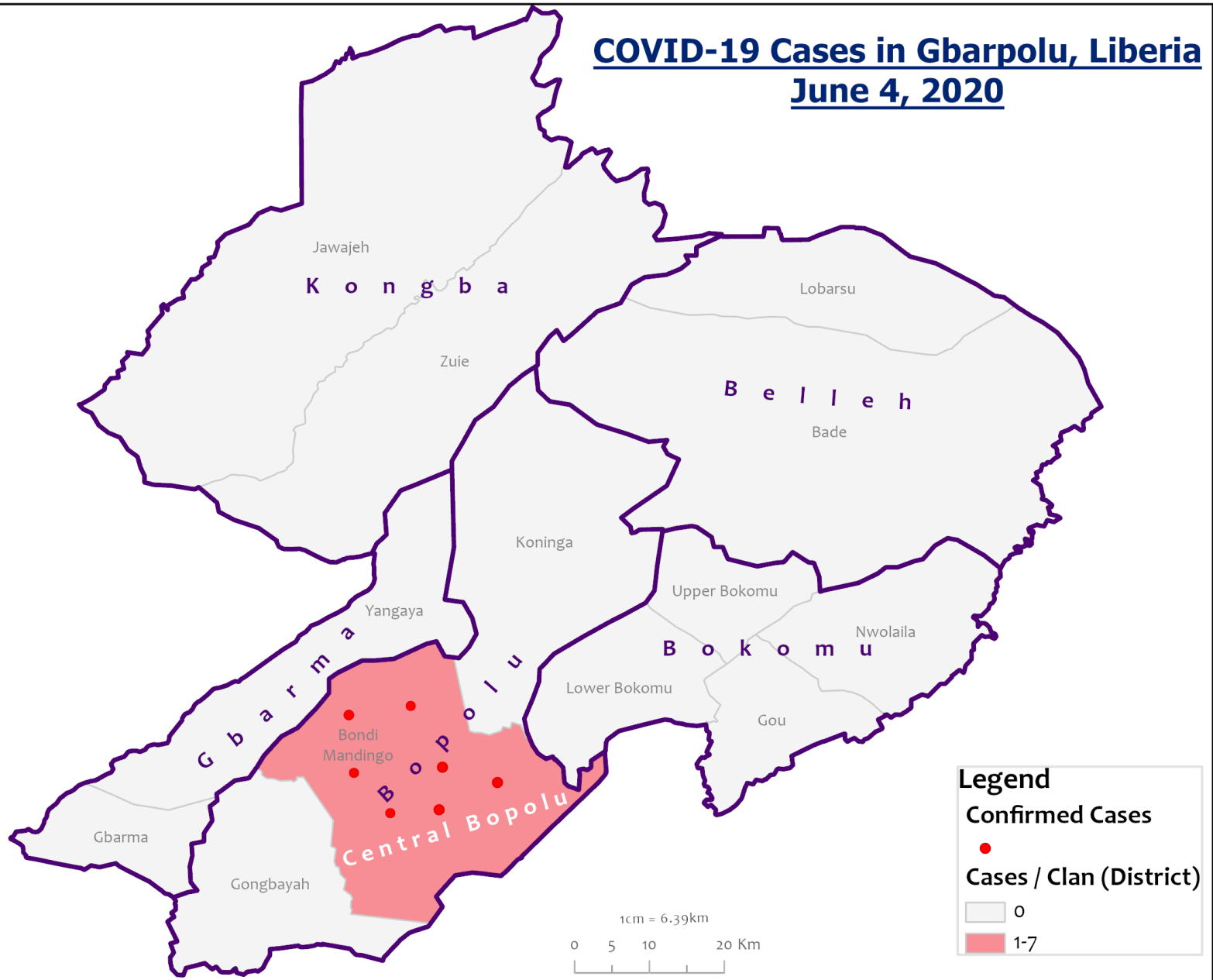




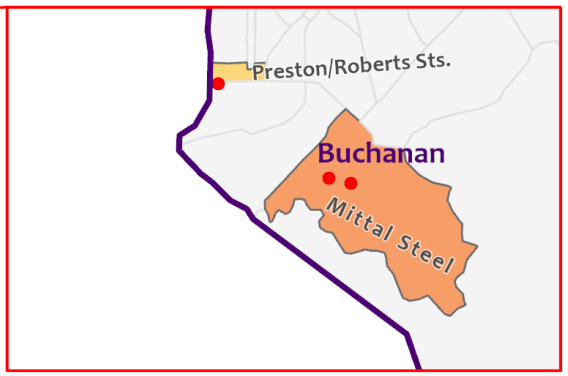
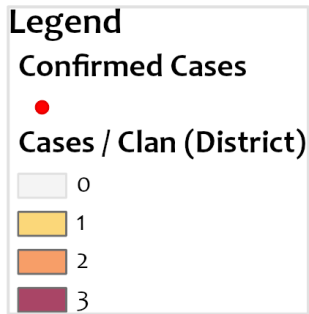
COVID-19 Cases in Margibi, Liberia - June 4, 2020



COVID-19 Cases in Gbarpolu, Liberia June 4, 2020



COVID-19 Cases in Grand Bassa, Liberia - June 4, 2020



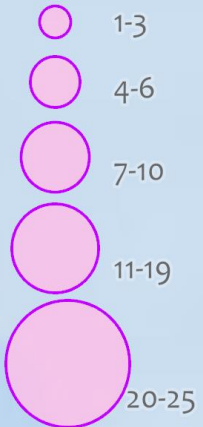
Data Source: NPHIL/MoH

COVID-19 Clusters - Montserrado and Margibi

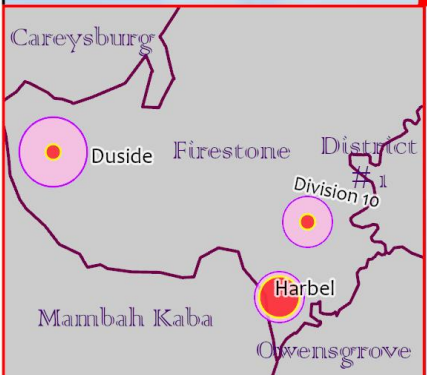
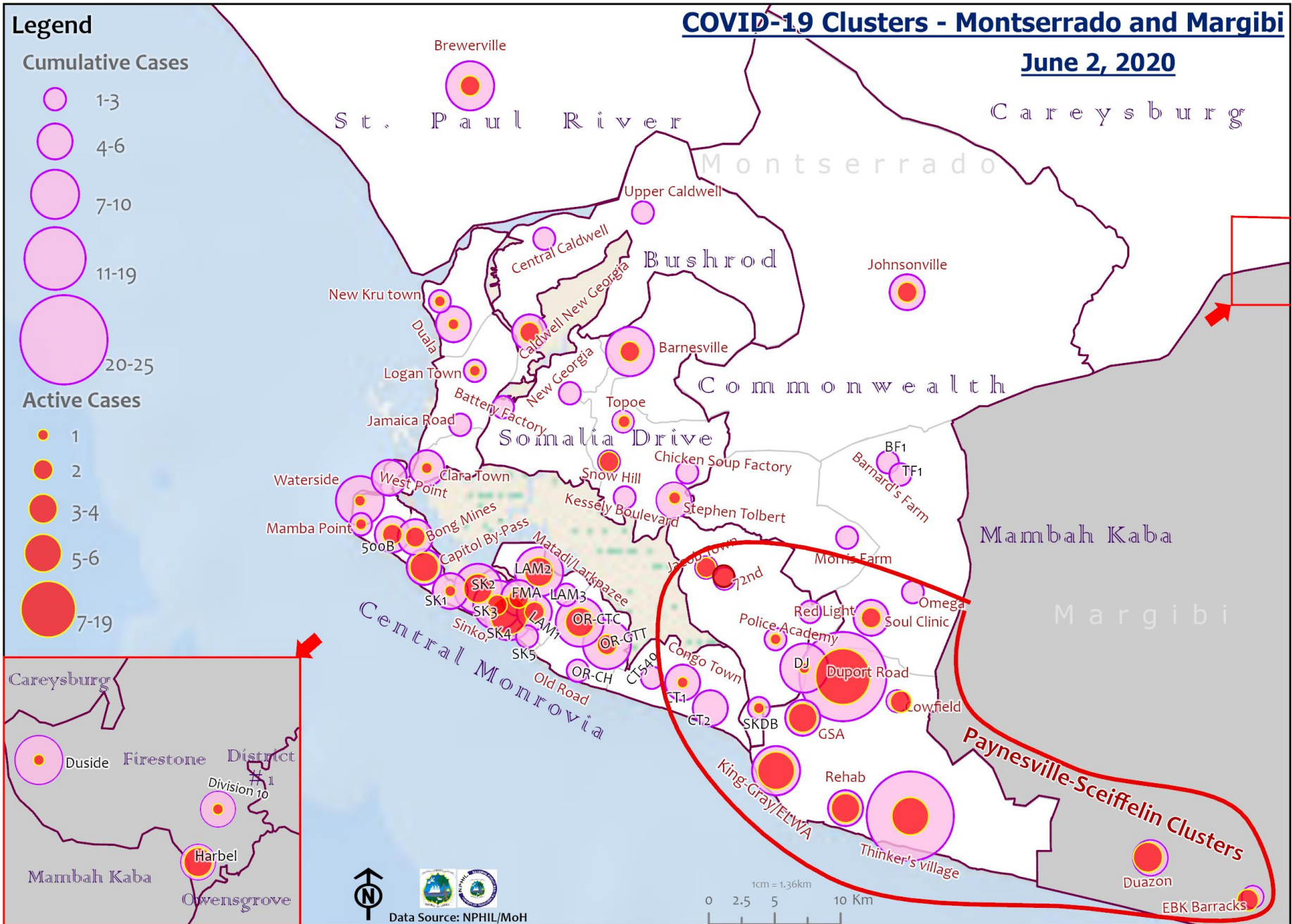
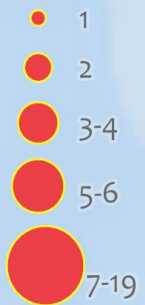
June 2, 2020

Legend

Cumulative Cases



Active Cases



North arrow
Data Source: NPHIL/MoH

1cm = 1.36km
0 2.5 5 10 Km

Precautionary Observation Centers (POC): Admission and Discharges

County	Precautionary Observation Centers				Cumulative Move to Treatment
	New admissions	Currently in POC	Daily Discharges	Cumulative Discharges (not including transferred)	
Gbarpolu	0	0	0	0	0
Grand Bassa	0	11	0	8	0
Grand Kru	0	0	0	16	0
Margibi	0	15	0	44	0
Maryland	0	4	0	35	0
Montserrado					
Nimba	0	13	0	17	0
River Gee	0	0	0	0	0
Sinoe	0	8	0	104	0
Lofa	2	48	0	0	0
NATIONAL	2	99	0	224	0

Treatment Unit Daily Report – June 04, 2020

14 Military Hospital Treatment Unit						
New admissions	Daily Discharges	Cumulative Recoveries	Daily Deaths	Cumulative Deaths	*Currently in treatment	Number of Vacant Beds
4	3	155	0	4	55	55

Demographic Breakdown of Cases at 14 Military Hospital											
Total Census	Total Adult	Total Children	Total Female	Total Male	Total Confirm	Others	Pregnant	Children			
								<1	1-5	6-10	11-17
55	49	6	14	41	53	2	1	0	3	0	3

*50 confirmed cases + 2 special cases = 54 Total Patients
 1 recovered patient + 2 special cases = 3 discharges

Recoveries from Treatment Units (16 March – 04 June 2020)

Treatment Unit	New admissions	Cumulative admissions	Recoveries	Cumulative Recoveries
14 Military Hospital, Montserrado	4	214	3	155
Chief Jallahlone Hospital, Gbarpolu	0	1	0	0
Rally Time Hospital, Grand Kru	0	1	0	1
Jackson F. Doe Hospital, Nimba	0	1	0	1
Ganta Methodist Hospital, Nimba	0	1	0	1
Pleebo Health Center, Maryland	0	1	0	1
Fish Town Hospital, River Gee	0	1	0	1
Tellewoyan Hospital, Lofa	0	1	0	0
Liberia Government Hospital, Grand Bassa	0	1	0	0
Arcelor Mittal, Grand Bassa	0	5	0	3
Duside Hospital, Margibi	0	17	0	12
F. J. Grant Hospital, Sinoe	0	2	0	1
Total	4	246	3	176

Admissions, Currently in Treatment, and Discharges

COVID-19 Treatment Units									
Treatment Unit	New admissions	Cumulative admissions	Discharges	Cumulative Discharges	Currently in Treatment Unit	Total Males	Total Females	0-35 yrs	36+ yrs
Chief Jallahlone Hospital, Gbarpolu	0	1	0	0	1	0	1	1	0
Rally Time Hospital, Grand Kru	0	1	0	1	0	0	0	0	0
Jackson F. Doe Hospital, Nimba	0	1	0	1	0	0	0	0	0
Ganta Methodist Hospital, Nimba	0	1	0	1	0	0	0	0	0
Pleebo Health Center, Maryland	0	1	0	1	0	0	0	0	0
Fish Town Hospital, River Gee	0	1	0	1	0	0	0	0	0
Tellewoyan Hospital, Lofa	0	1	0	0	1	1	0	0	1
Liberia Government Hospital, Grand Bassa	0	1	0	0	1	0	1	1	0
Arcelor Mittal, Grand Bassa	0	5	0	3	2	2	0	2	0
Duside Hospital, Margibi	0	17	0	12	5	3	2	2	3
F. J. Grant Hospital, Sinoe	0	2	0	1	1	1	0	0	1
Total	0	32	0	21	11	7	4	6	5

Laboratory Samples Evaluated – June 04, 2020

Laboratory	Total	New Positive	Repeat Positive	Initial Negative	Repeat Test Negative	Pending Lab Result
NPHRL	211	13	1	192	4	1
Total	211	13	1	192	4	1

Summary of COVID-19 Contact Tracing in Response Counties

County	New Contacts Line listed	Cumulative Contacts	No. of Health Care Workers as Contacts	Cumulative no. of Health Care Workers as contacts	Contacts became a case	Cumulative contacts that became a case	Contacts Completed 14 Days	Cumulative Contacts Completing 14 Days	Contacts Under Follow-up	Contacts lost to Follow-up
Montserratado	12	2228	0	298	1	71	58	1907	265	3
Margibi	0	270	0	91	0	19	3	135	135	0
Grand Bassa	0	71	0	58	0	5	0	43	27	0
Maryland	0	52	0	16	0	0	0	52	0	0
River Gee	0	72	0	1	0	0	0	72	0	0
Sinoe	0	128	0	15	0	0	0	104	24	0
Grand Kru	0	98	0	0	0	1	0	98	0	1
Gbarpolu	0	53	0	12	0	6	13	47	0	0
Lofa	3	143	0	30	0	2	0	0	143	0
Nimba	0	356	0	25	0	1	0	275	79	2
National	15	3471	0	546	1	105	74	2733	673	6

**Data reconciliation is currently ongoing in Montserratado thereby leading to incomplete information on the county record. The national team is closely working with the county to resolve on the completion of the data cleaning*

Active Case Finding (16 March – 04 June 2020)

County	Visitation				Identification, Investigation & Testing								Supervision		
	No. of communities Assigned	No. of communities Visited	No. of Households Assigned	No. of Households Visited	Sick persons Identified	Cumulative Sick persons identified	Sick persons referred for Investigation	Cumulative Sick person referred for Investigation	Sick persons Investigated	Cumulative Sick persons Investigated	Sick persons investigated and referred for testing	Cumulative Sick persons investigated and referred for testing	No. of Sick persons followed-up today	No. of supervision visits	No. of Supervisory Calls
Montserratado	250	0	0	20026	1	282	0	164	0	155	0	107			
Margibi	15	15	15	127	0	4	0	4	0	16	0	10	5	7	8
Maryland	33	33	255	255	1	2	1	2	1	2	1	1	0		
River Gee	80	80	40	20	0	13	0	13	0	13	0	6	0	6	0
Sinoe	19	19	0	0	0	0	0	0	0	0	0	0	0	5	5
Grand Kru	9	9	317	317	0	0	0	0	0	0	0	0	0	3	4
Gbarpolu	13	11	1170	68	0	9	0	9	0	9	0	0	0	2	0
Grand Bassa															
Nimba	490	330	3986	2427	0	8	0	8	0	8	0	4	4		
Lofa	94	94	457	457	0	23	0	23	0	23	0	23	0	29	47
National	1003	591	6240	23697	2	341	1	223	1	226	1	151	9	52	64

Thank you for Listening