



# **Liberia COVID-19 Daily Sitrep 83 (06<sup>th</sup> June 2020)**

# Summary of COVID-19 Cases by Reporting County, Liberia, 16 March – 06 June 2020

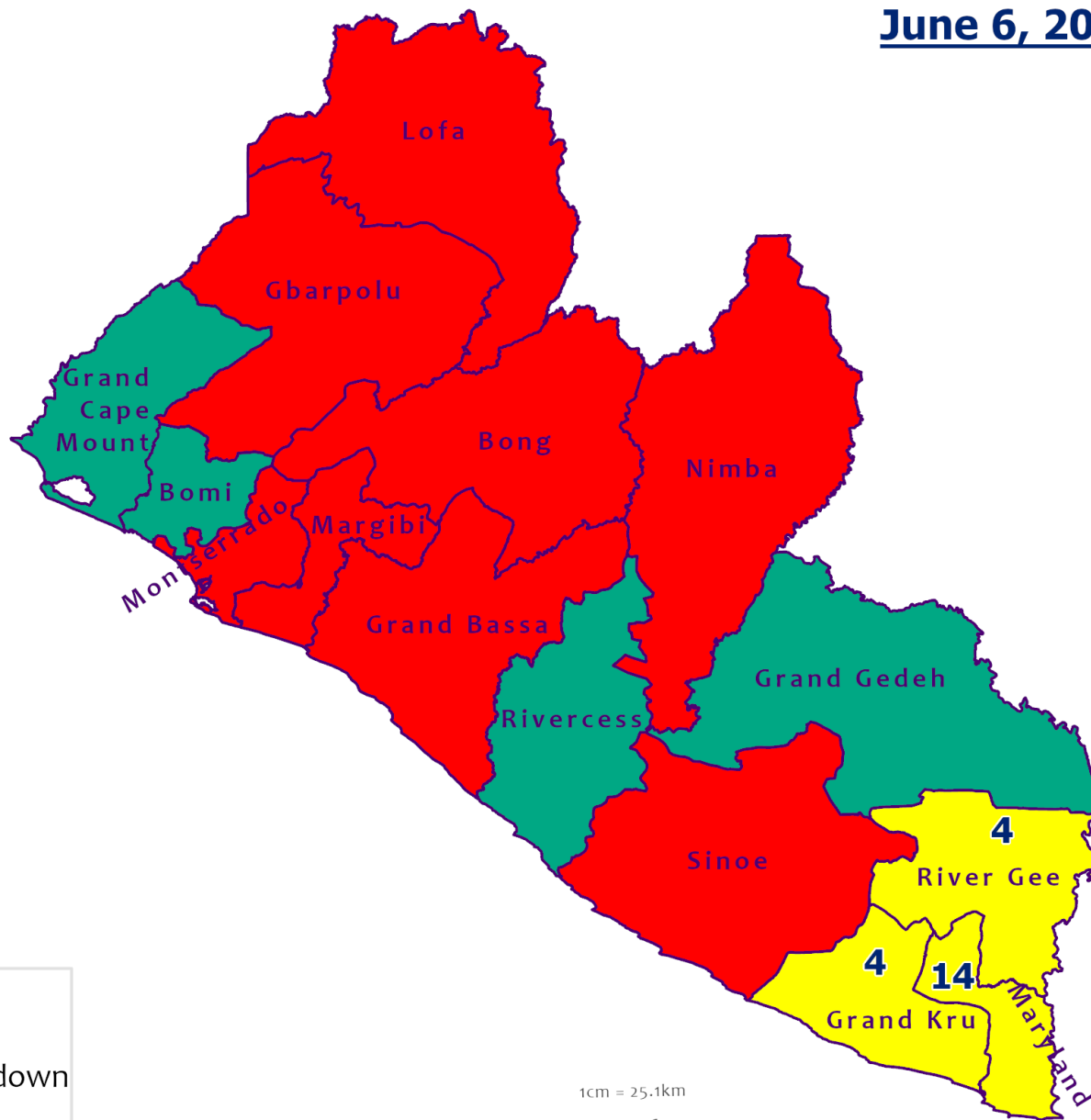
County	Laboratory Confirmed Cases	Confirmed Cases on Contact List	CUMULATIVE CASES Confirmed
	Bong	0	0
Gbarpolu	0	0	7
Grand Bassa	1	0	7
Grand Kru	0	0	1
Lofa	1	0	4
Margibi	1	0	26
Maryland	0	0	1
Montserrado	9	0	300
Nimba	2	0	9
River Gee	0	0	1
Sinoe	0	0	2
<b>NATIONAL</b>	<b>14</b>	<b>0</b>	<b>359</b>

# Demographic Breakdown (Gender & Age) of Confirmed COVID-19 Cases (March 16 – 06 June 2020)

County	<15 years		15 - 34		35 - 54		55+		All ages		Total Confirmed
	M	F	M	F	M	F	M	F	M	F	
Bong	0	0	0	0	1	0	0	0	1	0	1
Gbarpolu	1	2	0	1	1	1	1	0	3	4	7
Grand Bassa	1	0	1	5	0	0	0	0	2	5	7
Grand Kru	0	0	1	0	0	0	0	0	1	0	1
Lofa	0	0	0	0	2	0	2	0	4	0	4
Margibi	2	1	0	5	6	4	4	4	12	14	26
Maryland	0	0	1	0	0	0	0	0	1	0	1
Montserrado	10	12	71	41	84	31	36	15	201	99	300
Nimba	0	0	0	0	5	3	1	0	6	3	9
River Gee	0	0	0	0	1	0	0	0	1	0	1
Sinoe	0	0	0	0	2	0	0	0	2	0	2
<b>National</b>	<b>14</b>	<b>15</b>	<b>74</b>	<b>52</b>	<b>102</b>	<b>39</b>	<b>44</b>	<b>19</b>	<b>234</b>	<b>125</b>	<b>359</b>



# Counties COVID-19 Status in Liberia June 6, 2020



**County Status**

- Preparedness
- 28-Day Countdown
- Response



# Demographic Breakdown (Gender & Age) of Confirmed COVID-19 Deaths (March 16 – 06 June 2020)

County	<15 years		15 - 34		35 - 54		55+		All ages		Total Confirmed
	M	F	M	F	M	F	M	F	M	F	
Bong	0	0	0	0	0	0	1	0	1	0	1
Gbarpolu	0	0	0	0	1	0	1	0	2	0	2
Grand Bassa	0	0	0	0	0	0	0	0	0	0	0
Grand Kru	0	0	0	0	0	0	0	0	0	0	0
Lofa	0	0	0	0	0	0	2	0	2	0	2
Margibi	0	0	0	0	0	0	0	1	0	1	1
Maryland	0	0	0	0	0	0	0	0	0	0	0
Montserrado	0	0	0	0	8	4	6	2	14	6	20
Nimba	0	0	0	0	2	1	1	0	3	1	4
River Gee	0	0	0	0	0	0	0	0	0	0	0
Sinoe	0	0	0	0	0	0	0	0	0	0	0
<b>National</b>	<b>0</b>	<b>0</b>	<b>0</b>	<b>0</b>	<b>11</b>	<b>5</b>	<b>11</b>	<b>3</b>	<b>22</b>	<b>8</b>	<b>30</b>

# Summary of COVID-19 Deaths by Reporting County, Liberia, 16 March – 06 June 2020

County	DAILY REPORT								Cumulative Deaths
	New Suspected Deaths	Laboratory Confirmed Deaths						Confirmed Deaths on Contact List	
		COVID-19 Treatment Unit	Total in COVID-19 Treatment Unit	Health Facility	Total in Health Facility	Community	Total in Community		
Bong	0	0	0	0	0	0	1	0	1
Gbarpolu	0	0	0	0	2	0	0	0	2
Grand Bassa	0	0	0	0	0	0	0	0	0
Grand Kru	0	0	0	0	0	0	0	0	0
Lofa	0	0	0	0	2	0	1	0	3
Maryland	0	0	0	0	0	0	0	0	0
Margibi	0	0	0	0	1	0	0	0	1
Montserrado	0	0	4	0	5	0	11	0	20
Nimba	0	0	0	0	3	0	1	0	4
River Gee	0	0	0	0	0	0	0	0	0
Sinoe	0	0	0	0	0	0	0	0	0
<b>National</b>	<b>0</b>	<b>0</b>	<b>4</b>	<b>0</b>	<b>12</b>	<b>0</b>	<b>14</b>	<b>0</b>	<b>30</b>

**The Liberia Case Fatality rate (CFR) officially considered is for deaths that occurred among patients in care at the COVID-19 treatment units across the country. As of 1 June 2020 , a total of 4 deaths have been recorded CFR=1.63%. The country is however keeping active surveillance on community deaths and deaths in non COVID-19 treatment health units.**

# Daily and Cumulative Healthcare Worker (HCW) COVID-19 Cases and Deaths by County, Liberia, 16 March – 06 June 2020

County	DAILY REPORT						CUMULATIVE CASES (ALIVE & DEAD)	
	New Suspected & High Risk Cases (Alive)			New Suspect Death	Laboratory Confirmed Cases	Confirmed Cases on Contact List	Confirmed	Deaths
	Suspect	High Risk	Total					
Bong	0	0	0	0	0	0	0	0
Gbarpolu	0	0	0	0	0	0	1	1
Grand Bassa	0	0	0	0	1	0	1	0
Grand Kru	0	0	0	0	0	0	0	0
Lofa	0	0	0	0	0	0	0	0
Margibi	0	0	0	0	0	0	9	1
Maryland	0	0	0	0	0	0	0	0
Montserrado	0	0	0	0	1	0	36	1
Nimba	0	0	0	0	0	0	0	0
River Gee	0	0	0	0	0	0	0	0
Sinoe	0	0	0	0	0	0	0	0
<b>NATIONAL</b>	<b>0</b>	<b>0</b>	<b>0</b>	<b>0</b>	<b>2</b>	<b>0</b>	<b>47</b>	<b>3</b>

# Cadre Cases and Deaths by Health Care Workers (16 March – 06 June 2020)

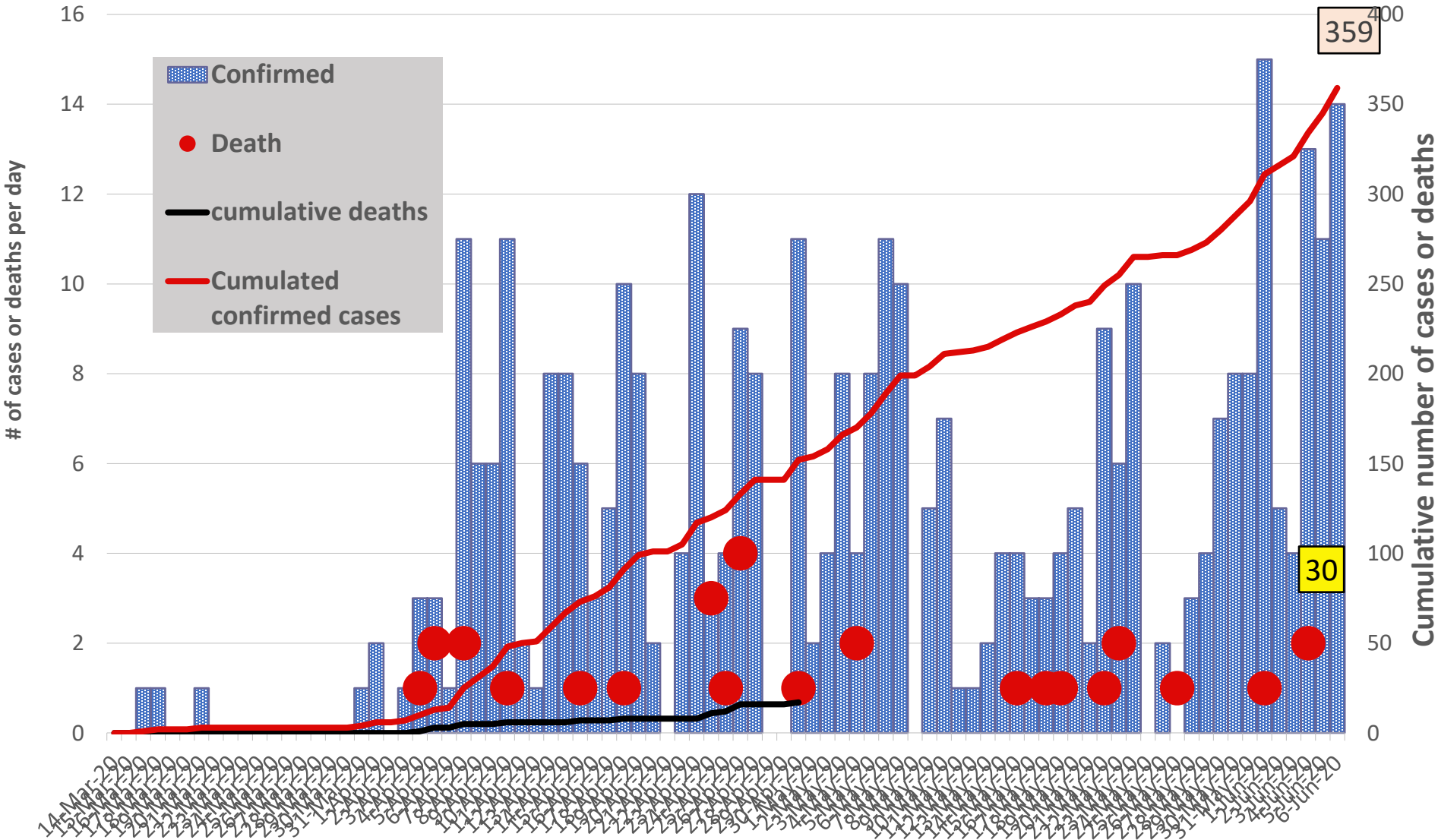
Health Care Worker Cadre	Montserratado		Margibi		Nimba		River Gee		Sinoe		Grand Kru		Gbarpolu		Lofa		Grand Bassa		National (Total)	
	Cases	Deaths	Cases	Deaths	Cases	Deaths	Cases	Deaths	Cases	Deaths	Cases	Deaths	Cases	Deaths	Cases	Deaths	Cases	Deaths	Cases	Deaths
Doctors	5	0	0	0	0	0	0	0	0	0	0	0	0	0	0	0	0	0	5	0
Pharmacists	1	0	0	0	0	0	0	0	0	0	0	0	0	0	0	0	0	0	1	0
Nurses	15	1	3	0	0	0	0	0	0	0	0	0	1	1	0	0	1	0	20	2
Radiologist	1	0	0	0	0	0	0	0	0	0	0	0	0	0	0	0	0	0	1	0
Physician Assistants	0	0	0	0	0	0	0	0	0	0	0	0	0	0	0	0	0	0	0	0
Lab Technician	4	0	1	0	0	0	0	0	0	0	0	0	0	0	0	0	0	0	5	0
Environmental Health Technicians	6	0	0	0	0	0	0	0	0	0	0	0	0	0	0	0	0	0	6	0
Microbiologist	1	0	0	0	0	0	0	0	0	0	0	0	0	0	0	0	0	0	1	0
Epidemiologist	2	0	0	0	0	0	0	0	0	0	0	0	0	0	0	0	0	0	2	0
Dieticians	0	0	5	1	0	0	0	0	0	0	0	0	0	0	0	0	0	0	5	1
Psychosocial Worker	1	0	0	0	0	0	0	0	0	0	0	0	0	0	0	0	0	0	1	0
<b>Total:</b>	<b>36</b>	<b>1</b>	<b>9</b>	<b>1</b>	<b>0</b>	<b>0</b>	<b>0</b>	<b>0</b>	<b>0</b>	<b>0</b>	<b>0</b>	<b>0</b>	<b>1</b>	<b>1</b>	<b>0</b>	<b>0</b>	<b>1</b>	<b>0</b>	<b>47</b>	<b>3</b>



# Suspected and High Risk Cases and Deaths (16 March – 06 June 2020)

County	New Suspected	Cumulative Suspected	New High Risk	Cumulative High Risk	New Suspected Deaths	Cumulative Suspected Deaths
<b>Montserrado</b>	4	3039	0	0	0	71
<b>Margibi</b>	0	3	0	24	0	1
<b>Maryland</b>	0	16	0	12	0	3
<b>River Gee</b>	0	5	0	8	0	0
<b>Lofa</b>	2	27	0	33	2	26
<b>Sinoe</b>	0	30	0	43	0	1
<b>Grand Kru</b>	1	14	0	21	0	1
<b>Gbarpolu</b>	0	9	0	6	0	0
<b>Grand Bassa</b>	0	40	2	33	0	0
<b>Nimba</b>	0	47	0	84	0	10
<b>Bong</b>	0	0	0	0	0	0
<b>National</b>	<b>7</b>	<b>3230</b>	<b>2</b>	<b>264</b>	<b>2</b>	<b>113</b>

# EPI-Curve of Confirmed Cases and Deaths

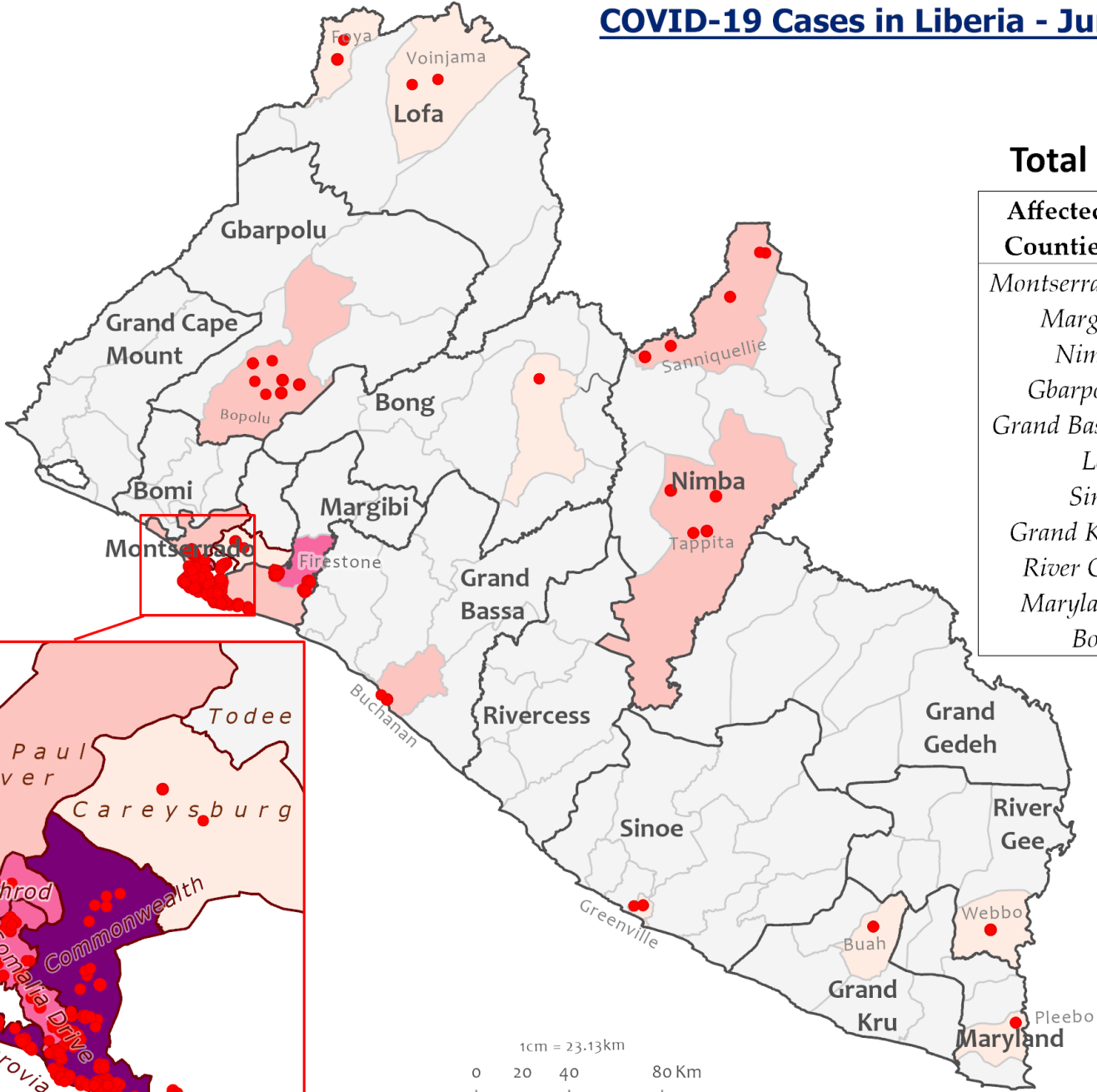
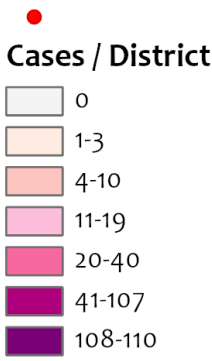


# COVID-19 Cases in Liberia - June 6, 2020



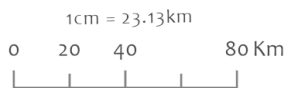
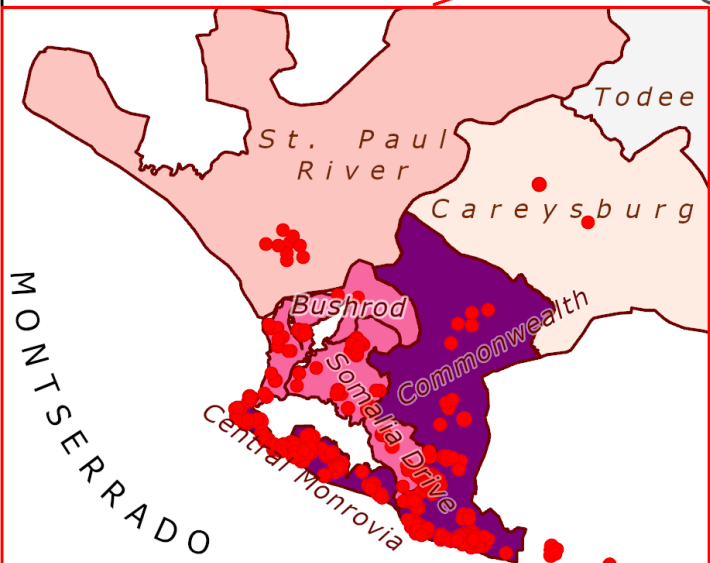
## Legend

Confirmed Cases



**Total Cases: 359**

Affected Counties	Cumulative Cases
Montserrado	300
Margibi	26
Nimba	9
Gbarpolu	7
Grand Bassa	7
Lofa	4
Sinoe	2
Grand Kru	1
River Gee	1
Maryland	1
Bong	1



Data Source: NPHIL/MoH

# COVID-19 Cases in Montserrado, Liberia - June 6, 2020



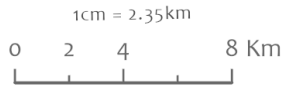
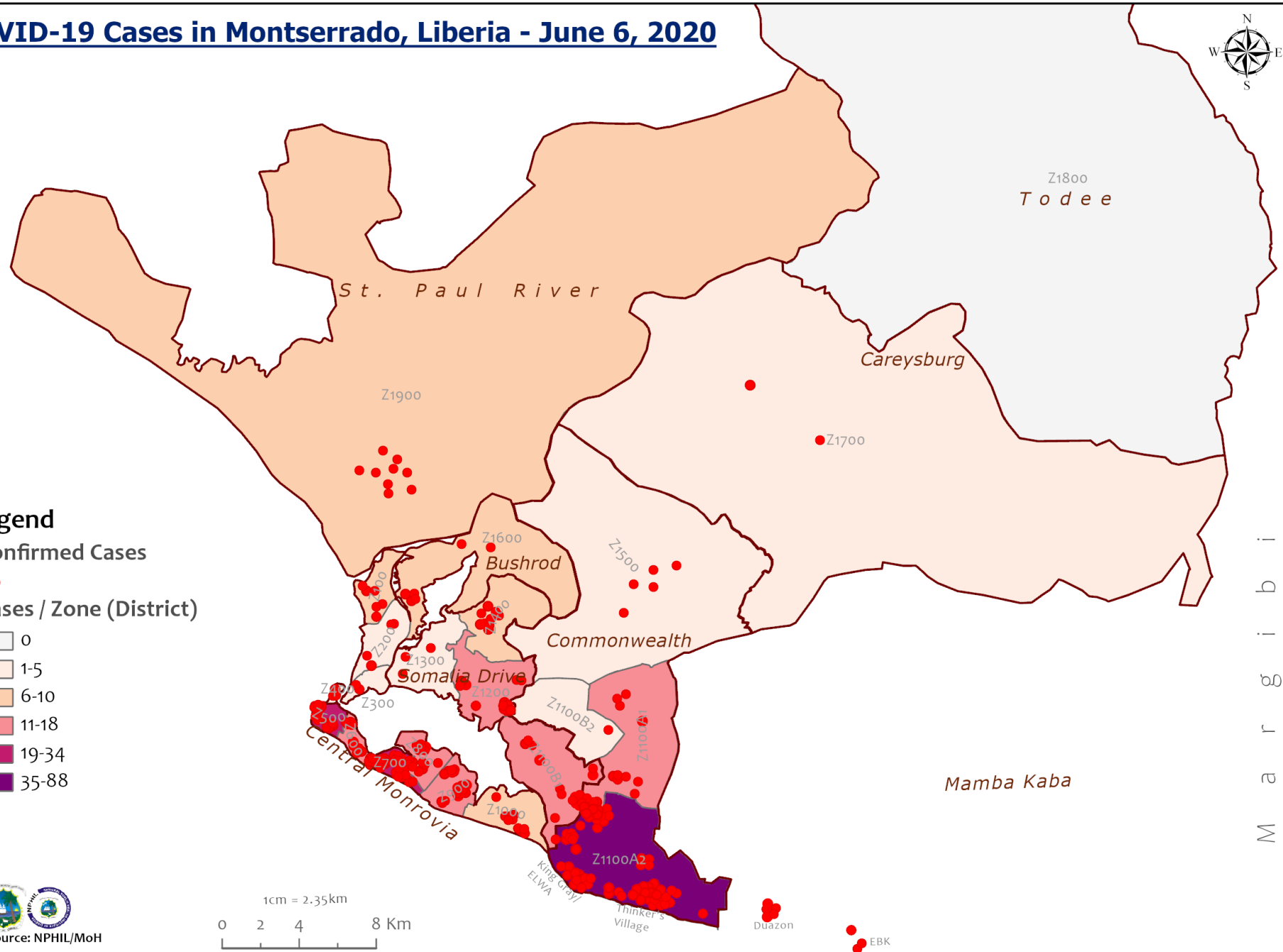
**Legend**

**Confirmed Cases**

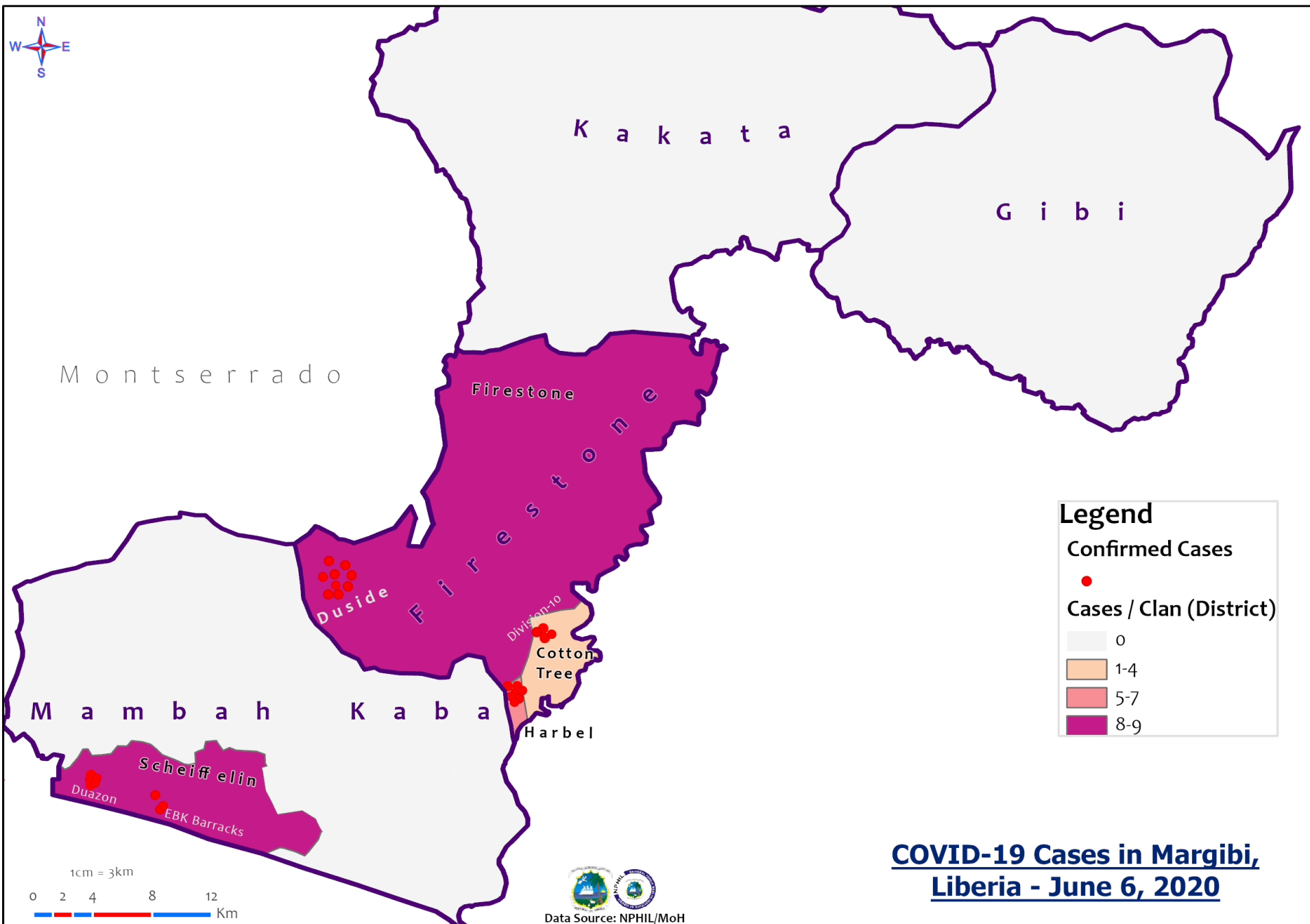
●

**Cases / Zone (District)**

- 0
- 1-5
- 6-10
- 11-18
- 19-34
- 35-88



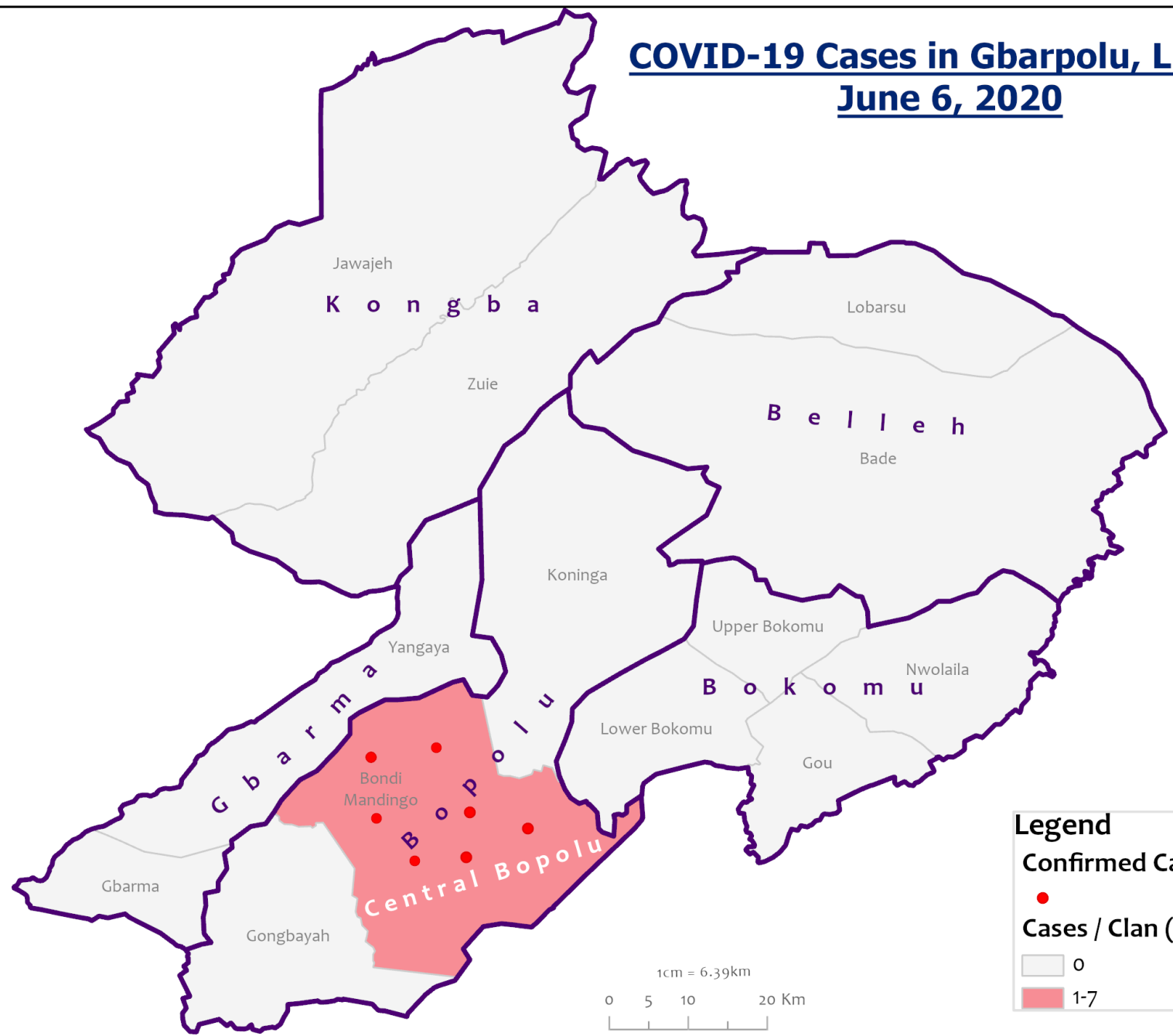
M a r s h a l l s I s l a n d s



**COVID-19 Cases in Margibi, Liberia - June 6, 2020**



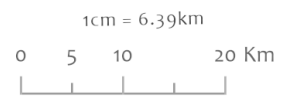
# COVID-19 Cases in Gbarpolu, Liberia June 6, 2020



**Legend**

Confirmed Cases

- Cases / Clan (District)
- 0
- 1-7

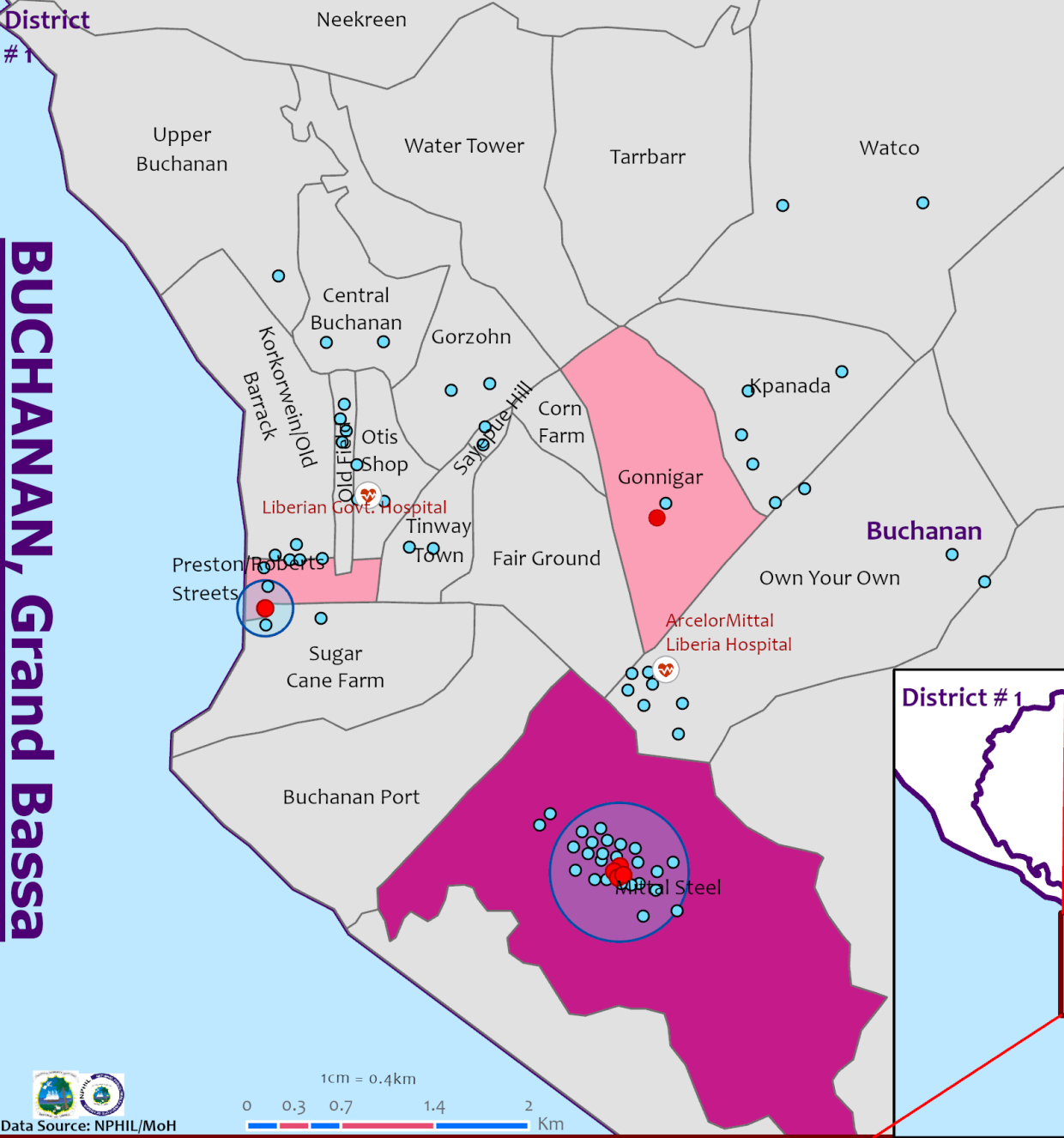




# Distribution of COVID-19 Cases and Contacts - June 6, 2020

District # 1

**BUCHANAN, Grand Bassa**



**Legend**

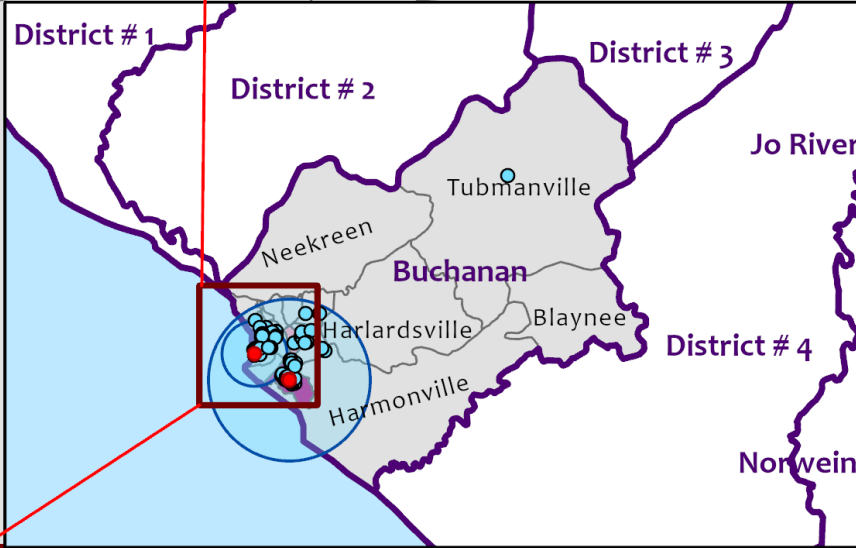
- Cases
- Contacts

**Cumulative contacts / Case(s)**

- 28
- 46

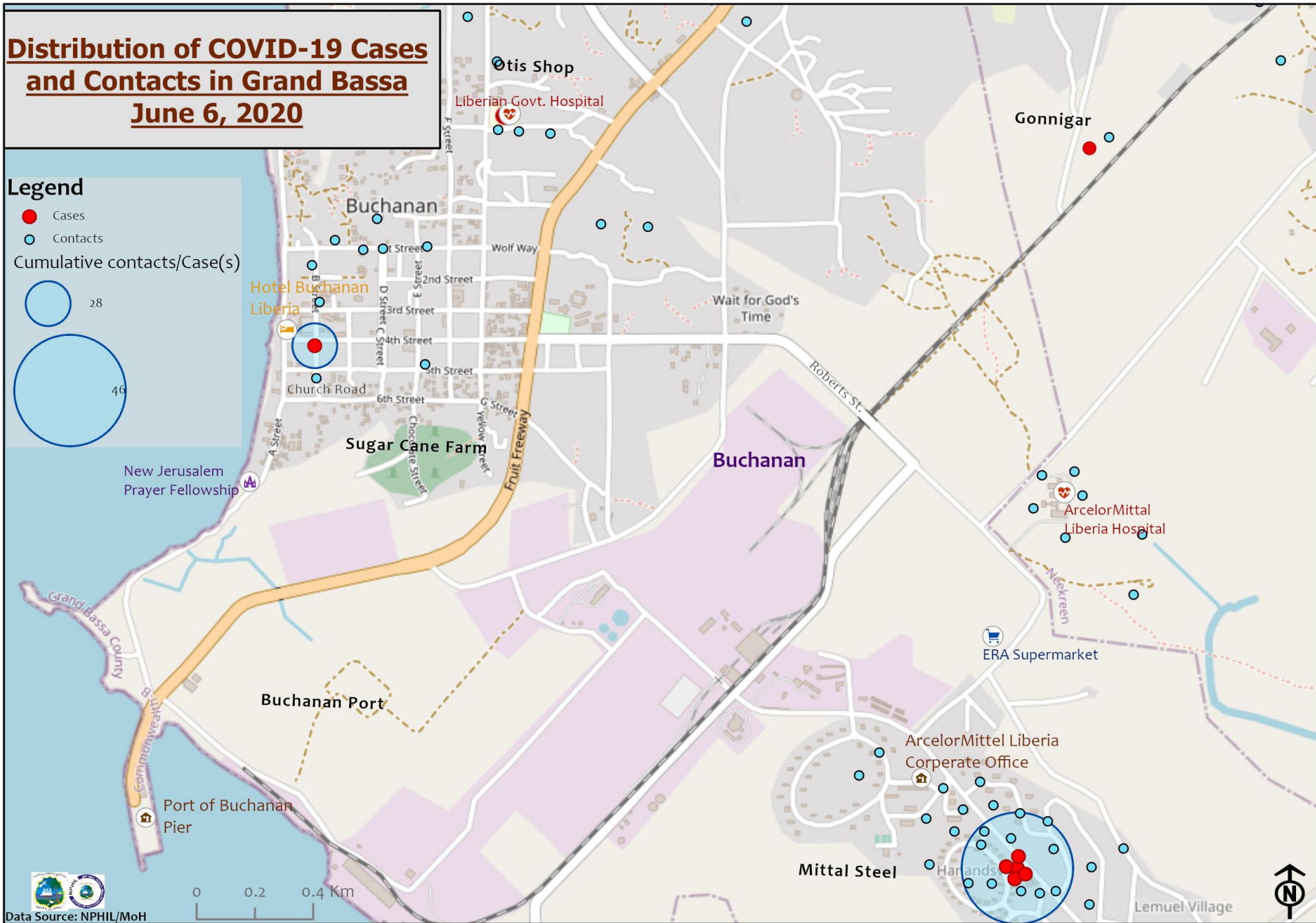
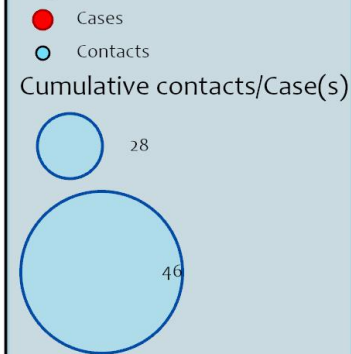
**Cases / Clan (District)**

- 0
- 1
- 2-5



# Distribution of COVID-19 Cases and Contacts in Grand Bassa June 6, 2020

## Legend





# Precautionary Observation Centers (POC): Admission and Discharges

County	Precautionary Observation Centers				Cumulative Move to Treatment
	New admissions	Currently in POC	Daily Discharges	Cumulative Discharges (not including transferred)	
Gbarpolu	0	0	0	0	0
Grand Bassa	0	10	0	8	1
Grand Kru	0	0	0	16	0
Margibi	0	15	0	44	0
Maryland	0	4	0	35	0
<b>Montserrat</b>					
Nimba	0	13	0	17	0
River Gee	0	0	0	0	0
Sinoe	0	8	0	104	0
Lofa	0	49	0	0	0
<b>NATIONAL</b>	<b>0</b>	<b>99</b>	<b>0</b>	<b>224</b>	<b>1</b>

*Please note that Montserrat did not provide data on the POC  
Bong County has not established POC yet. The 10 high risks contacts are self-isolated.  
Lofa conducted data verification to clean the data*

# Treatment Unit Daily Report – June 06, 2020

14 Military Hospital Treatment Unit						
New admissions	Daily Discharges	Cumulative Recoveries	Daily Deaths	Cumulative Deaths	*Currently in treatment	Number of Vacant Beds
5	8	171	0	4	43	67

Demographic Breakdown of Cases at 14 Military Hospital											
Total Census	Total Adult	Total Children	Total Female	Total Male	Total Confirm	Others	Pregnant	Children			
								<1	1-5	6-10	11-17
43	39	4	10	33	42	1	1	0	2	0	2

\*42 confirmed cases + 1 special case = 43 Total Patients  
 7 recovered patients + 1 special case = 8 discharges

# Recoveries from Treatment Units (16 March – 06 June 2020)

Treatment Unit	New admissions	Cumulative admissions	Recoveries	Cumulative Recoveries
14 Military Hospital, Montserrado	5	219	8	171
Chief Jallahlone Hospital, Gbarpolu	0	1	0	0
Rally Time Hospital, Grand Kru	0	1	0	1
Jackson F. Doe Hospital, Nimba	0	1	0	1
Ganta Methodist Hospital, Nimba	0	1	0	1
Pleebo Health Center, Maryland	0	1	0	1
Fish Town Hospital, River Gee	0	1	0	1
Tellewoyan Hospital, Lofa	1	2	0	0
Liberia Government Hospital, Grand Bassa	1	2	0	0
Arcelor Mittal, Grand Bassa	0	5	2	5
Duside Hospital, Margibi	1	18	0	12
F. J. Grant Hospital, Sinoe	0	2	0	1
<b>Total</b>	<b>8</b>	<b>254</b>	<b>10</b>	<b>194</b>

# Admissions, Currently in Treatment, and Discharges

COVID-19 Treatment Units									
Treatment Unit	New admissions	Cumulative admissions	Discharges	Cumulative Discharges	Currently in Treatment Unit	Total Males	Total Females	0-35 yrs	36+ yrs
Chief Jallahlone Hospital, Gbarpolu	0	1	0	0	1	0	1	1	0
Rally Time Hospital, Grand Kru	0	1	0	1	0	0	0	0	0
Jackson F. Doe Hospital, Nimba	0	1	0	1	0	0	0	0	0
Ganta Methodist Hospital, Nimba	0	1	0	1	0	0	0	0	0
Pleebo Health Center, Maryland	0	1	0	1	0	0	0	0	0
Fish Town Hospital, River Gee	0	1	0	1	0	0	0	0	0
Tellewoyan Hospital, Lofa	1	2	0	0	2	2	0	0	2
Arcelor Mittal, Grand Bassa	0	5	2	5	0	0	0	0	0
Liberia Government Hospital, Grand Bassa	1	2	0	0	2	0	2	2	0
Duside Hospital, Margibi	1	18	0	12	6	4	2	2	4
F. J. Grant Hospital, Sinoe	0	2	0	1	1	1	0	0	1
<b>Total</b>	<b>3</b>	<b>35</b>	<b>2</b>	<b>23</b>	<b>12</b>	<b>7</b>	<b>5</b>	<b>5</b>	<b>7</b>

## Laboratory Samples Evaluated – June 06, 2020

Laboratory	Total	New Positive	Repeat Positive	Initial Negative	Repeat Test Negative	Pending Lab Result
NPHRL	183	14	3	147	9	10
<b>Total</b>	<b>183</b>	<b>14</b>	<b>3</b>	<b>147</b>	<b>9</b>	<b>10</b>

# Summary of COVID-19 Contact Tracing in Response Counties

County	New Contacts Line listed	Cumulative Contacts	No. of Health Care Workers as Contacts	Cumulative no. of Health Care Workers as contacts	Contacts became a case	Cumulative contacts that became a case	Contacts Completed 14 Days	Cumulative Contacts Completing 14 Days	Contacts Under Follow-up	Contacts lost to Follow-up
Montserrado	18	2312	0	299	0	71	29	1986	270	3
Margibi	0	270	0	91	1	20	0	135	135	0
Grand Bassa	0	74	0	58	1	6	0	43	29	0
Maryland	0	52	0	16	0	0	0	52	2	0
River Gee	0	72	0	1	0	0	0	72	0	0
Sinoe	0	128	0	15	0	0	0	104	24	0
Grand Kru	0	98	0	0	0	1	0	98	0	1
Gbarpolu	0	53	0	12	0	6	0	53	0	0
Lofa	12	162	0	30	1	3	0	0	162	0
Nimba	0	356	0	25	0	1	74	275	4	2
<b>Bong</b>	<b>0</b>	<b>10</b>	<b>0</b>	<b>0</b>	<b>0</b>	<b>0</b>	<b>0</b>	<b>0</b>	<b>10</b>	<b>0</b>
<b>National</b>	<b>30</b>	<b>3587</b>	<b>0</b>	<b>547</b>	<b>3</b>	<b>108</b>	<b>103</b>	<b>2818</b>	<b>636</b>	<b>6</b>

*\*Data reconciliation is currently ongoing in Montserrado thereby leading to incomplete information on the county record. The national team is closely working with the county to resolve on the completion of the data cleaning*

# Active Case Finding (16 March – 06 June 2020)

County	Visitation				Identification, Investigation & Testing									Supervision	
	No. of communities Assigned	No. of communities Visited	No. of Households Assigned	No. of Households Visited	Sick persons Identified	Cumulative Sick persons identified	Sick persons referred for Investigation	Cumulative Sick person referred for Investigation	Sick persons Investigated	Cumulative Sick persons Investigated	Sick persons investigated and referred for testing	Cumulative Sick persons investigated and referred for testing	No. of Sick persons followed-up today	No. of supervision visits	No. of Supervisory Calls
Montserratado	250	0	0	22572	0	299	0	164	0	155	0	107	0	0	0
Margibi	15	15	15	163	0	4	0	4	0	16	0	10	5	9	6
Maryland	0	0	0	0	0	0	0	0	0	0	0	0	0	0	0
River Gee	80	80	40	20	0	13	0	13	0	13	0	6	0	6	0
Sinoe	19	19	0	0	0	0	0	0	0	0	0	0	0	5	5
Grand Kru	75	50	1000	1000	2	7	2	7	2	7	1	7	2	5	3
Gbarpolu	13	10	1750	65	0	9	0	9	0	9	0	0	0	0	0
Grand Bassa	0	0	0	0	0	0	0	0	0	0	0	0	0	0	0
Nimba	100	87	1058	944	0	9	0	9	0	9	0	5	5	0	0
Lofa	69	69	359	359	2	27	2	27	2	27	2	27	2	27	59
<b>Bong</b>	<b>0</b>	<b>0</b>	<b>0</b>	<b>0</b>	<b>0</b>	<b>0</b>	<b>0</b>	<b>0</b>	<b>0</b>	<b>0</b>	<b>0</b>	<b>0</b>	<b>0</b>	<b>0</b>	<b>0</b>
<b>National</b>	<b>621</b>	<b>330</b>	<b>4222</b>	<b>25123</b>	<b>4</b>	<b>368</b>	<b>4</b>	<b>233</b>	<b>4</b>	<b>236</b>	<b>3</b>	<b>162</b>	<b>14</b>	<b>52</b>	<b>73</b>

**Thank you for Listening**