



Liberia COVID-19 Daily Sitrep 84 (07th June 2020)

Summary of COVID-19 Cases by Reporting County, Liberia, 16 March – 07 June 2020

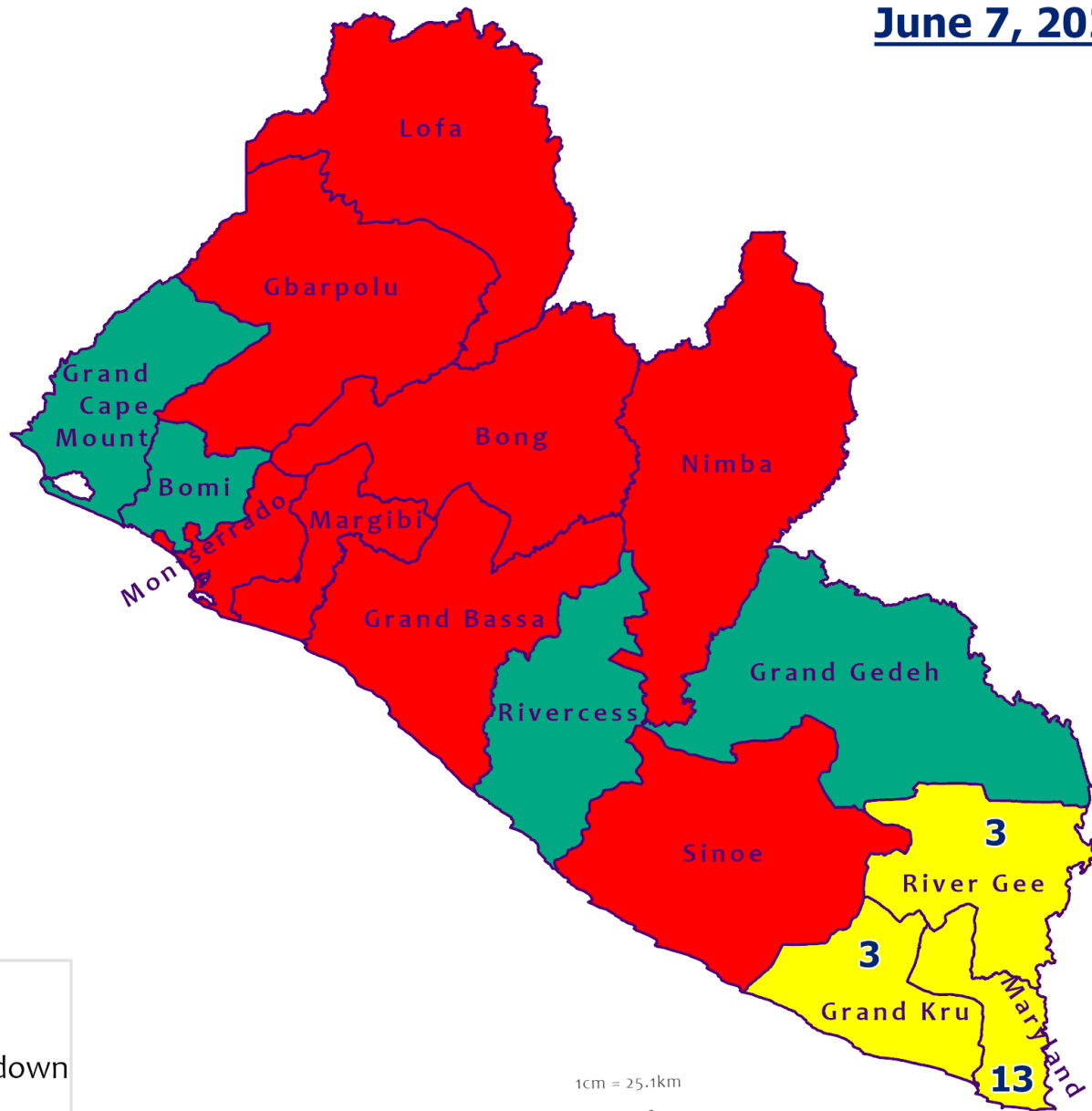
County	Laboratory Confirmed Cases	Confirmed Cases on Contact List	CUMULATIVE CASES
			Confirmed
Bong	0	0	1
Gbarpolu	0	0	7
Grand Bassa	0	0	7
Grand Kru	0	0	1
Lofa	0	0	4
Margibi	1	0	27
Maryland	0	0	1
Montserrado	10	0	312
Nimba	0	0	7
River Gee	0	0	1
Sinoe	0	0	2
NATIONAL	11	0	370

Demographic Breakdown (Gender & Age) of Confirmed COVID-19 Cases (March 16 – 07 June 2020)

County	<15 years		15 - 34		35 - 54		55+		All ages		Total Confirmed
	M	F	M	F	M	F	M	F	M	F	
Bong	0	0	0	0	1	0	0	0	1	0	1
Gbarpolu	1	2	0	1	1	1	1	0	3	4	7
Grand Bassa	1	0	1	5	0	0	0	0	2	5	7
Grand Kru	0	0	1	0	0	0	0	0	1	0	1
Lofa	0	0	0	0	2	0	2	0	4	0	4
Margibi	2	1	1	5	6	4	4	4	13	14	27
Maryland	0	0	1	0	0	0	0	0	1	0	1
Montserrado	12	12	74	41	86	36	36	15	208	104	312
Nimba	0	0	0	0	5	1	1	0	6	1	7
River Gee	0	0	0	0	1	0	0	0	1	0	1
Sinoe	0	0	0	0	2	0	0	0	2	0	2
National	16	15	78	52	104	42	44	19	242	128	370



Counties COVID-19 Status in Liberia June 7, 2020



County Status

- Preparedness
- 28-Day Countdown
- Response



Demographic Breakdown (Gender & Age) of Confirmed COVID-19 Deaths (March 16 – 07 June 2020)

County	<15 years		15 - 34		35 - 54		55+		All ages		Total Confirmed
	M	F	M	F	M	F	M	F	M	F	
Bong	0	0	0	0	0	0	1	0	1	0	1
Gbarpolu	0	0	0	0	1	0	1	0	2	0	2
Grand Bassa	0	0	0	0	0	0	0	0	0	0	0
Grand Kru	0	0	0	0	0	0	0	0	0	0	0
Lofa	0	0	0	0	0	0	2	0	2	0	2
Margibi	0	0	0	0	0	0	0	1	0	1	1
Maryland	0	0	0	0	0	0	0	0	0	0	0
Montserrado	0	0	0	0	8	4	6	2	14	6	20
Nimba	0	0	0	0	2	1	1	0	3	1	4
River Gee	0	0	0	0	0	0	0	0	0	0	0
Sinoe	0	0	0	0	0	0	0	0	0	0	0
National	0	0	0	0	11	5	11	3	22	8	30

Summary of COVID-19 Deaths by Reporting County, Liberia, 16 March – 07 June 2020

County	DAILY REPORT								Cumulative Deaths
	New Suspected Deaths	Laboratory Confirmed Deaths						Confirmed Deaths on Contact List	
		COVID-19 Treatment Unit	Total in COVID-19 Treatment Unit	Health Facility	Total in Health Facility	Community	Total in Community		
Bong	0	0	0	0	0	0	1	0	1
Gbarpolu	0	0	0	0	2	0	0	0	2
Grand Bassa	0	0	0	0	0	0	0	0	0
Grand Kru	0	0	0	0	0	0	0	0	0
Lofa	0	0	0	0	2	0	1	0	3
Maryland	0	0	0	0	0	0	0	0	0
Margibi	0	0	0	0	1	0	0	0	1
Montserrado	0	0	4	0	5	0	11	0	20
Nimba	0	0	0	0	3	0	1	0	4
River Gee	0	0	0	0	0	0	0	0	0
Sinoe	0	0	0	0	0	0	0	0	0
National	0	0	4	0	12	0	14	0	30

The Liberia Case Fatality rate (CFR) officially considered is for deaths that occurred among patients in care at the COVID-19 treatment units across the country. As of 1 June 2020 , a total of 4 deaths have been recorded CFR=1.55%. The country is however keeping active surveillance on community deaths and deaths in non COVID-19 treatment health units.

Daily and Cumulative Healthcare Worker (HCW) COVID-19 Cases and Deaths by County, Liberia, 16 March – 07 June 2020

County	DAILY REPORT						CUMULATIVE CASES (ALIVE & DEAD)	
	New Suspected & High Risk Cases (Alive)			New Suspect Death	Laboratory Confirmed Cases	Confirmed Cases on Contact List	Confirmed	Deaths
	Suspect	High Risk	Total					
Bong	0	0	0	0	0	0	0	0
Gbarpolu	0	0	0	0	0	0	1	1
Grand Bassa	0	0	0	0	1	0	1	0
Grand Kru	0	0	0	0	0	0	0	0
Lofa	0	0	0	0	0	0	0	0
Margibi	0	0	0	0	0	0	9	1
Maryland	0	0	0	0	0	0	0	0
Montserrado	0	0	0	0	1	0	36	1
Nimba	0	0	0	0	0	0	0	0
River Gee	0	0	0	0	0	0	0	0
Sinoe	0	0	0	0	0	0	0	0
NATIONAL	0	0	0	0	2	0	47	3

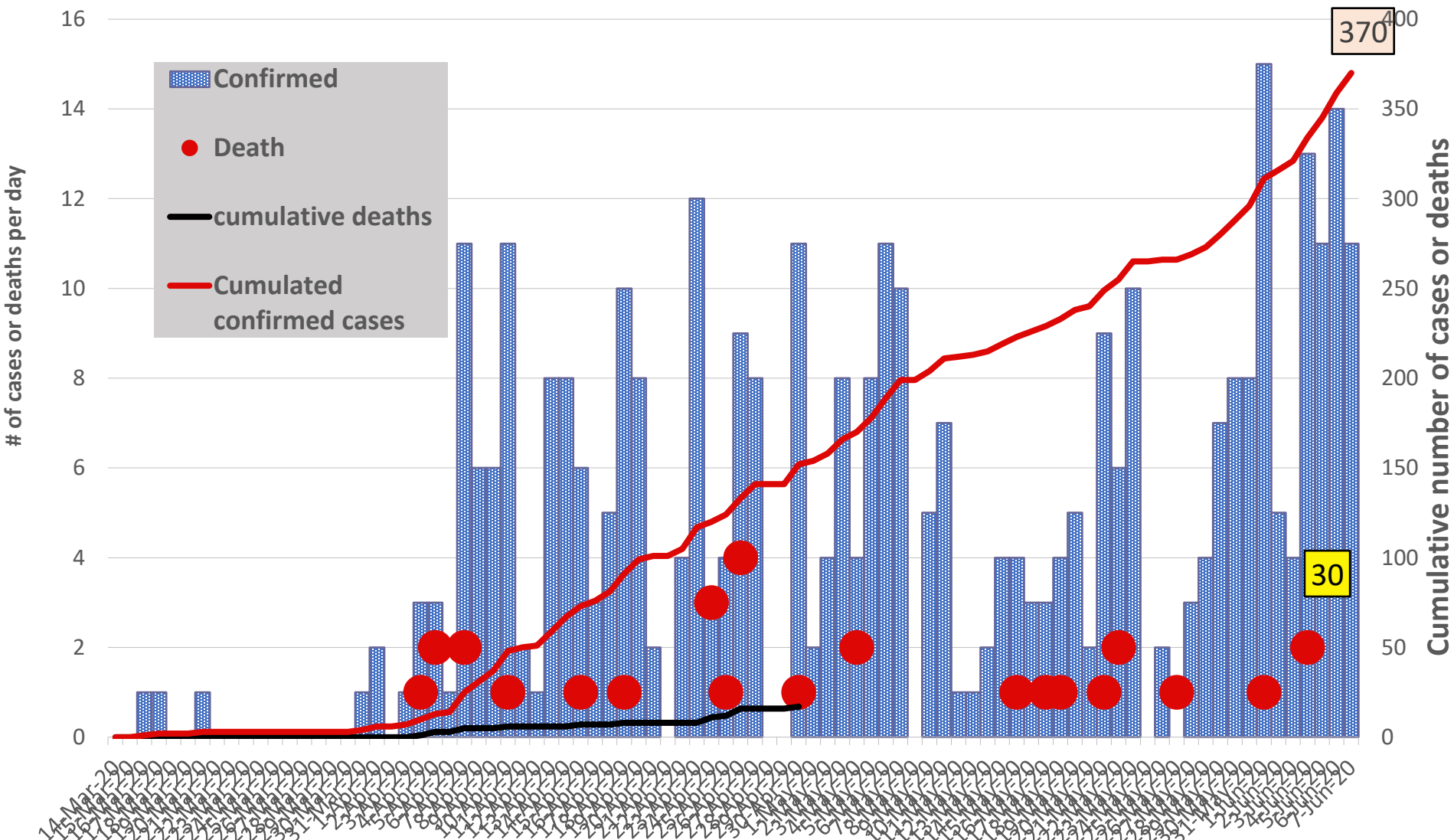
Cadre Cases and Deaths by Health Care Workers (16 March – 07 June 2020)

Health Care Worker Cadre	Montserratado		Margibi		Nimba		River Gee		Sinoe		Grand Kru		Gbarpolu		Lofa		Grand Bassa		National (Total)	
	Cases	Deaths	Cases	Deaths	Cases	Deaths	Cases	Deaths	Cases	Deaths	Cases	Deaths	Cases	Deaths	Cases	Deaths	Cases	Deaths	Cases	Deaths
Doctors	5	0	0	0	0	0	0	0	0	0	0	0	0	0	0	0	0	0	5	0
Pharmacists	1	0	0	0	0	0	0	0	0	0	0	0	0	0	0	0	0	0	1	0
Nurses	15	1	3	0	0	0	0	0	0	0	0	0	1	1	0	0	1	0	20	2
Radiologist	1	0	0	0	0	0	0	0	0	0	0	0	0	0	0	0	0	0	1	0
Physician Assistants	0	0	0	0	0	0	0	0	0	0	0	0	0	0	0	0	0	0	0	0
Lab Technician	4	0	1	0	0	0	0	0	0	0	0	0	0	0	0	0	0	0	5	0
Environmental Health Technicians	6	0	0	0	0	0	0	0	0	0	0	0	0	0	0	0	0	0	6	0
Microbiologist	1	0	0	0	0	0	0	0	0	0	0	0	0	0	0	0	0	0	1	0
Epidemiologist	2	0	0	0	0	0	0	0	0	0	0	0	0	0	0	0	0	0	2	0
Dieticians	0	0	5	1	0	0	0	0	0	0	0	0	0	0	0	0	0	0	5	1
Psychosocial Worker	1	0	0	0	0	0	0	0	0	0	0	0	0	0	0	0	0	0	1	0
Total:	36	1	9	1	0	0	0	0	0	0	0	0	1	1	0	0	1	0	47	3

Suspected and High Risk Cases and Deaths (16 March – 07 June 2020)

County	New Suspected	Cumulative Suspected	New High Risk	Cumulative High Risk	New Suspected Deaths	Cumulative Suspected Deaths
Montserrado	13	3052	0	0	0	71
Margibi	0	3	0	24	0	1
Maryland	0	16	0	12	0	3
River Gee	0	5	0	8	0	0
Lofa	2	29	0	33	1	27
Sinoe	0	30	0	43	0	1
Grand Kru	1	14	0	21	0	1
Gbarpolu	0	9	0	6	0	0
Grand Bassa	0	40	2	33	0	0
Nimba	0	48	0	84	0	10
Bong	0	2	0	14	0	1
National	16	3248	2	278	1	115

EPI-Curve of Confirmed Cases and Deaths



30

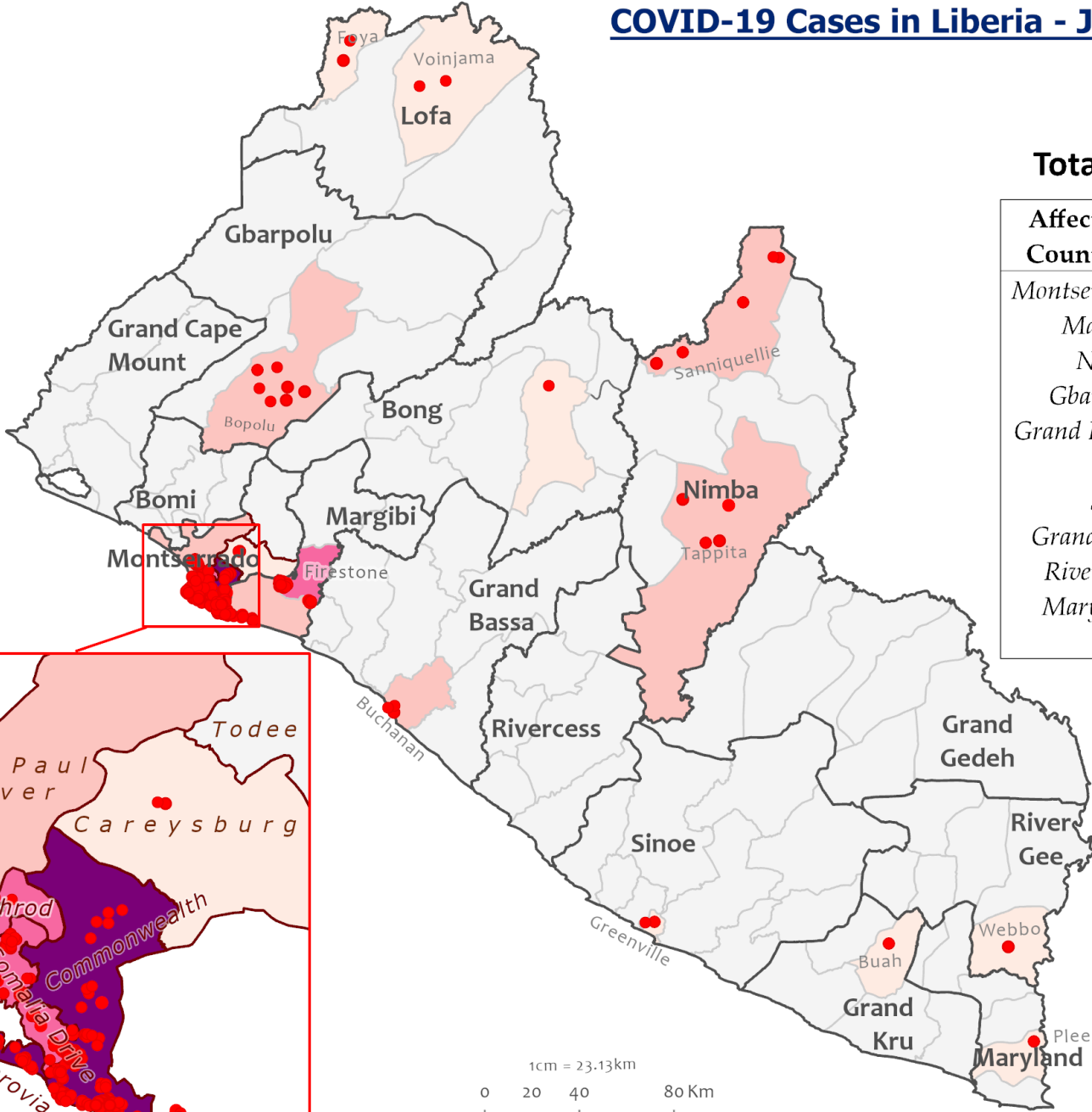
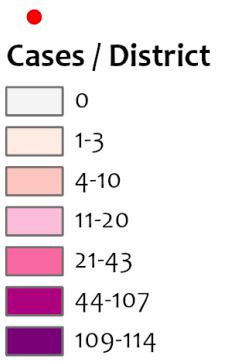
370

COVID-19 Cases in Liberia - June 7, 2020



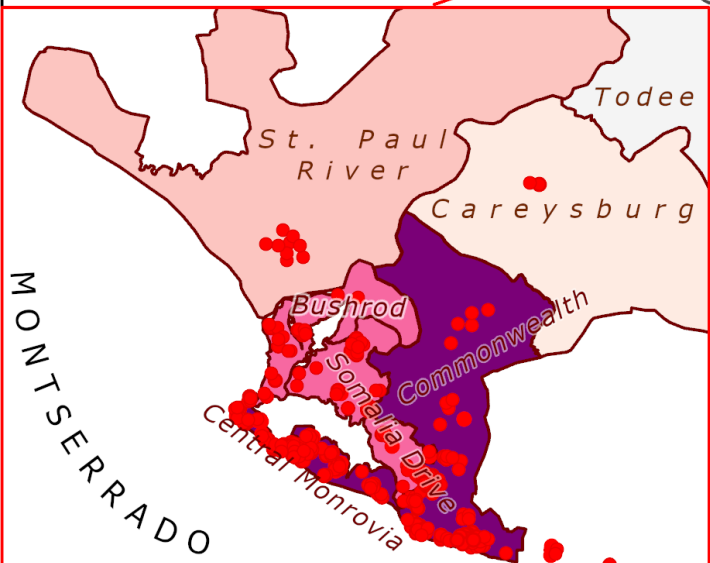
Legend

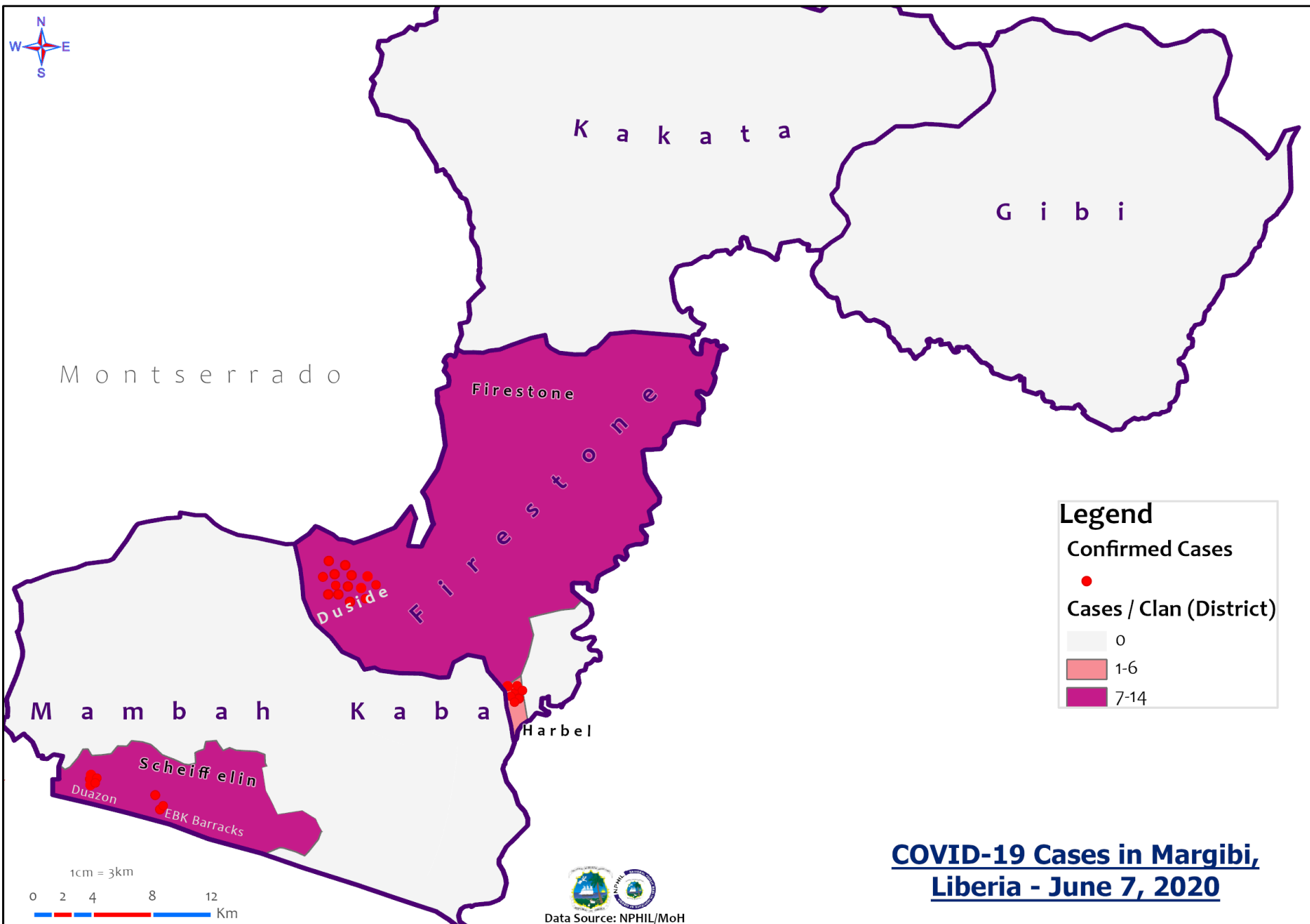
Confirmed Cases



Total Cases: **370**

Affected Counties	Cumulative Cases
Montserrado	312
Margibi	27
Nimba	7
Gbarpolu	7
Grand Bassa	7
Lofa	4
Sinoe	2
Grand Kru	1
River Gee	1
Maryland	1
Bong	1



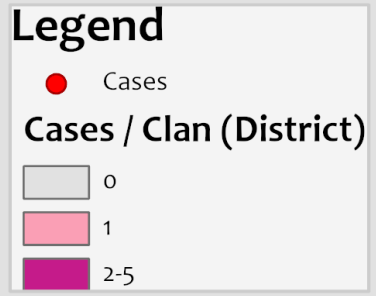


COVID-19 Cases in Margibi, Liberia - June 7, 2020

Data Source: NPHIL/MoH

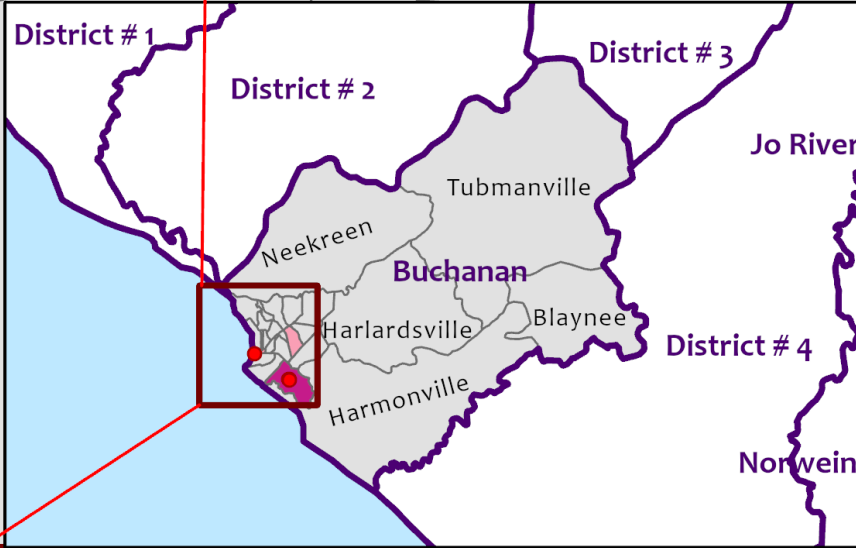
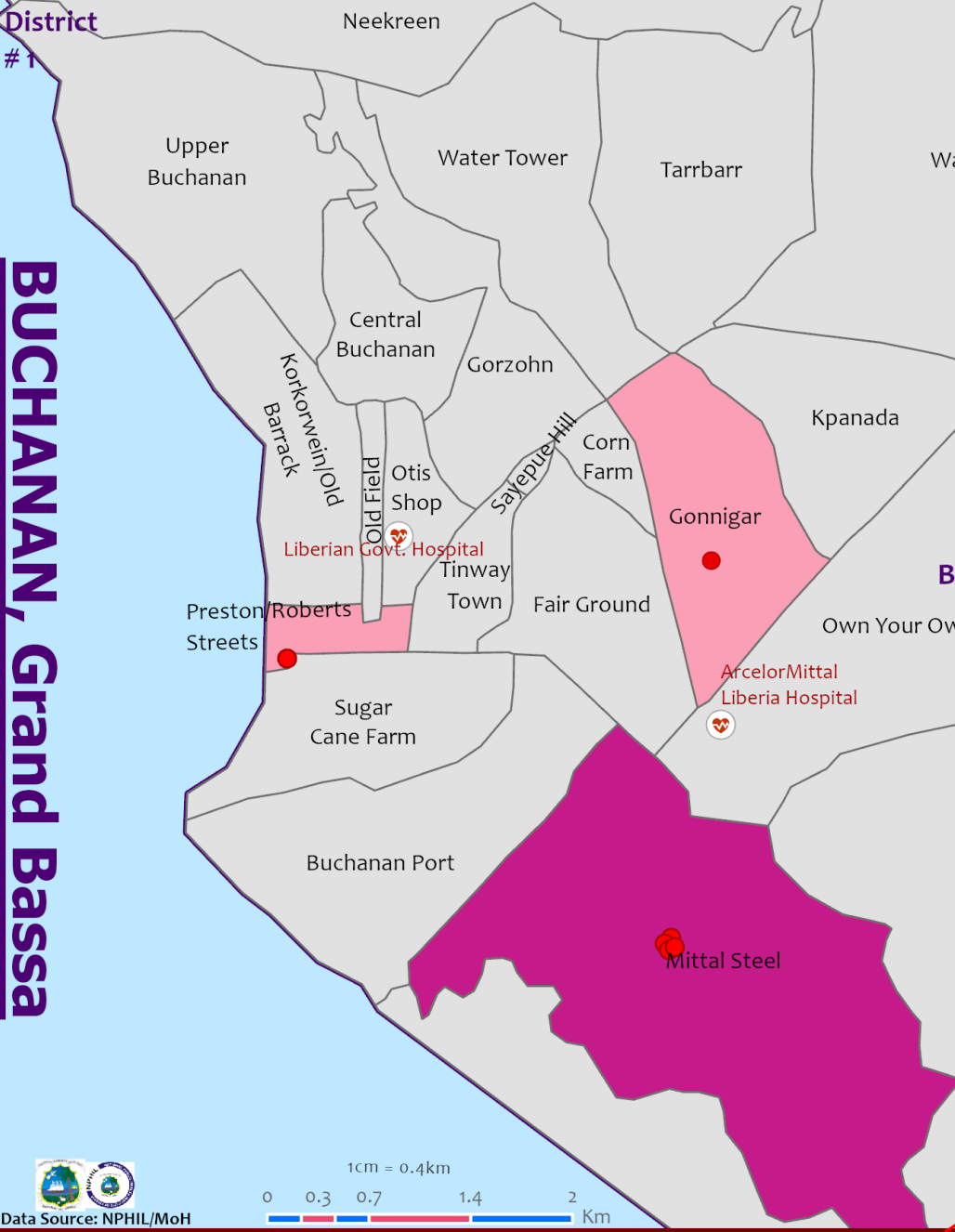


Distribution of COVID-19 Cases and Contacts - June 7, 2020



District # 1

BUCHANAN, Grand Bassa



Precautionary Observation Centers (POC): Admission and Discharges

County	Precautionary Observation Centers				Cumulative Move to Treatment
	New admissions	Currently in POC	Daily Discharges	Cumulative Discharges (not including transferred)	
Gbarpolu	0	0	0	0	0
Grand Bassa	0	10	0	8	1
Grand Kru	0	0	0	16	0
Margibi	6	17	0	48	0
Maryland	0	4	0	35	0
Montserrado	0	0	0	0	0
Nimba	0	13	0	17	0
River Gee	0	0	0	0	0
Sinoe	0	8	0	104	0
Lofa	0	49	0	0	0
NATIONAL	6	101	0	228	1

*Please note that Montserrado did not provide data on the POC
Bong County has not established POC yet. The 10 high risks contacts are self-isolated.
Lofa conducted data verification to clean the data*

Treatment Unit Daily Report – June 07, 2020

14 Military Hospital Treatment Unit						
New admissions	Daily Discharges	Cumulative Recoveries	Daily Deaths	Cumulative Deaths	*Currently in treatment	Number of Vacant Beds
4	1	172	0	4	46	64

Demographic Breakdown of Cases at 14 Military Hospital											
Total Census	Total Adult	Total Children	Total Female	Total Male	Total Confirm	Others	Pregnant	Children			
								<1	1-5	6-10	11-17
46	42	4	10	36	45	1	1	0	2	0	2

*45 confirmed cases + 1 special case = 46 Total Patients

Recoveries from Treatment Units (16 March – 07 June 2020)

Treatment Unit	New admissions	Cumulative admissions	Recoveries	Cumulative Recoveries
14 Military Hospital, Montserrado	4	223	1	172
Chief Jallahlone Hospital, Gbarpolu	0	1	0	0
Rally Time Hospital, Grand Kru	0	1	0	1
Jackson F. Doe Hospital, Nimba	0	1	0	1
Ganta Methodist Hospital, Nimba	0	1	0	1
Pleebo Health Center, Maryland	0	1	0	1
Fish Town Hospital, River Gee	0	1	0	1
Tellewoyan Hospital, Lofa	0	2	0	0
Liberia Government Hospital, Grand Bassa	0	2	0	0
Arcelor Mittal, Grand Bassa	0	5	0	5
Duside Hospital, Margibi	0	18	0	12
F. J. Grant Hospital, Sinoe	0	2	0	1
Total	4	258	1	195

Admissions, Currently in Treatment, and Discharges

COVID-19 Treatment Units									
Treatment Unit	New admissions	Cumulative admissions	Discharges	Cumulative Discharges	Currently in Treatment Unit	Total Males	Total Females	0-35 yrs	36+ yrs
Chief Allahlone Hospital, Gbarpolu	0	1	0	0	1	0	1	1	0
Rally Time Hospital, Grand Kru	0	1	0	1	0	0	0	0	0
Jackson F. Doe Hospital, Nimba	0	1	0	1	0	0	0	0	0
Ganta Methodist Hospital, Nimba	0	1	0	1	0	0	0	0	0
Pleebo Health Center, Maryland	0	1	0	1	0	0	0	0	0
Fish Town Hospital, River Gee	0	1	0	1	0	0	0	0	0
Tellewoyan Hospital, Lofa	0	2	0	0	2	2	0	0	2
Arcelor Mittal, Grand Bassa	0	5	0	5	0	0	0	0	0
Liberia Government Hospital, Grand Bassa	0	2	0	0	2	0	2	2	0
Duside Hospital, Margibi	0	18	0	12	6	4	2	2	4
F. J. Grant Hospital, Sinoe	0	2	0	1	1	1	0	0	1
Total	0	35	0	23	12	7	5	5	7

Laboratory Samples Evaluated – June 07, 2020

Laboratory	Total	New Positive	Repeat Positive	Initial Negative	Repeat Test Negative	Pending Lab Result
NPHRL	181	11	1	158	1	10
Total	181	11	1	158	1	10

Summary of COVID-19 Contact Tracing in Response Counties

County	New Contacts Line listed	Cumulative Contacts	No. of Health Care Workers as Contacts	Cumulative no. of Health Care Workers as contacts	Contacts became a case	Cumulative contacts that became a case	Contacts Completed 14 Days	Cumulative Contacts Completing 14 Days	Contacts Under Follow-up	Contacts lost to Follow-up
Montserratado	11	2323	0	299	0	71	0	1986	281	3
Margibi	6	276	0	91	1	20	4	139	137	0
Grand Bassa	0	74	0	58	0	6	0	48	20	0
Maryland	0	52	0	16	0	0	0	52	2	0
River Gee	0	72	0	1	0	0	0	72	0	0
Sinoe	0	128	0	15	0	0	0	104	24	0
Grand Kru	0	98	0	0	0	1	0	98	0	1
Gbarpolu	0	53	0	12	0	6	0	53	0	0
Lofa	82	224	0	30	0	3	0	0	206	15
Nimba	0	356	0	25	0	1	74	349	4	2
Bong	4	14	0	0	0	0	0	0	14	0
National	103	3670	0	547	1	108	78	2901	688	21

**Data reconciliation is currently ongoing in Montserratado thereby leading to incomplete information on the county record. The national team is closely working with the county to resolve on the completion of the data cleaning*

Active Case Finding (16 March – 07 June 2020)

County	Visitation				Identification, Investigation & Testing								Supervision		
	No. of communities Assigned	No. of communities Visited	No. of Households Assigned	No. of Households Visited	Sick persons Identified	Cumulative Sick persons identified	Sick persons referred for Investigation	Cumulative Sick person referred for Investigation	Sick persons Investigated	Cumulative Sick persons Investigated	Sick persons investigated and referred for testing	Cumulative Sick persons investigated and referred for testing	No. of Sick persons followed-up today	No. of supervision visits	No. of Supervisory Calls
Montserratado	250	0	0	22652	0	299	0	164	0	155	0	107	0	0	0
Margibi	15	15	15	151	0	4	0	4	0	16	0	10	5	5	10
Maryland	12	12	91	91	0	138	0	0	0	138	0	0	0	0	0
River Gee	80	80	40	20	0	13	0	13	0	13	0	6	0	6	0
Sinoe	19	19	0	0	0	0	0	0	0	0	0	0	0	5	5
Grand Kru	75	50	1000	1000	2	7	2	7	2	7	1	7	2	5	3
Gbarpolu	13	10	1750	65	0	9	0	9	0	9	0	0	0	0	0
Grand Bassa	9	9	177	177	0	31	0	31	0	31	0	0	0	0	0
Nimba	0	0	0	0	0	0	0	0	0	0	0	0	0	0	0
Lofa	29	29	147	147	2	29	2	29	2	29	2	29	2	21	47
Bong	0	0	0	0	0	0	0	0	0	0	0	0	0	0	0
National	493	215	3043	24126	4	499	4	226	4	367	3	159	9	42	65

Thank you for Listening