



Liberia COVID-19 Daily Sitrep 94 (17th June 2020)

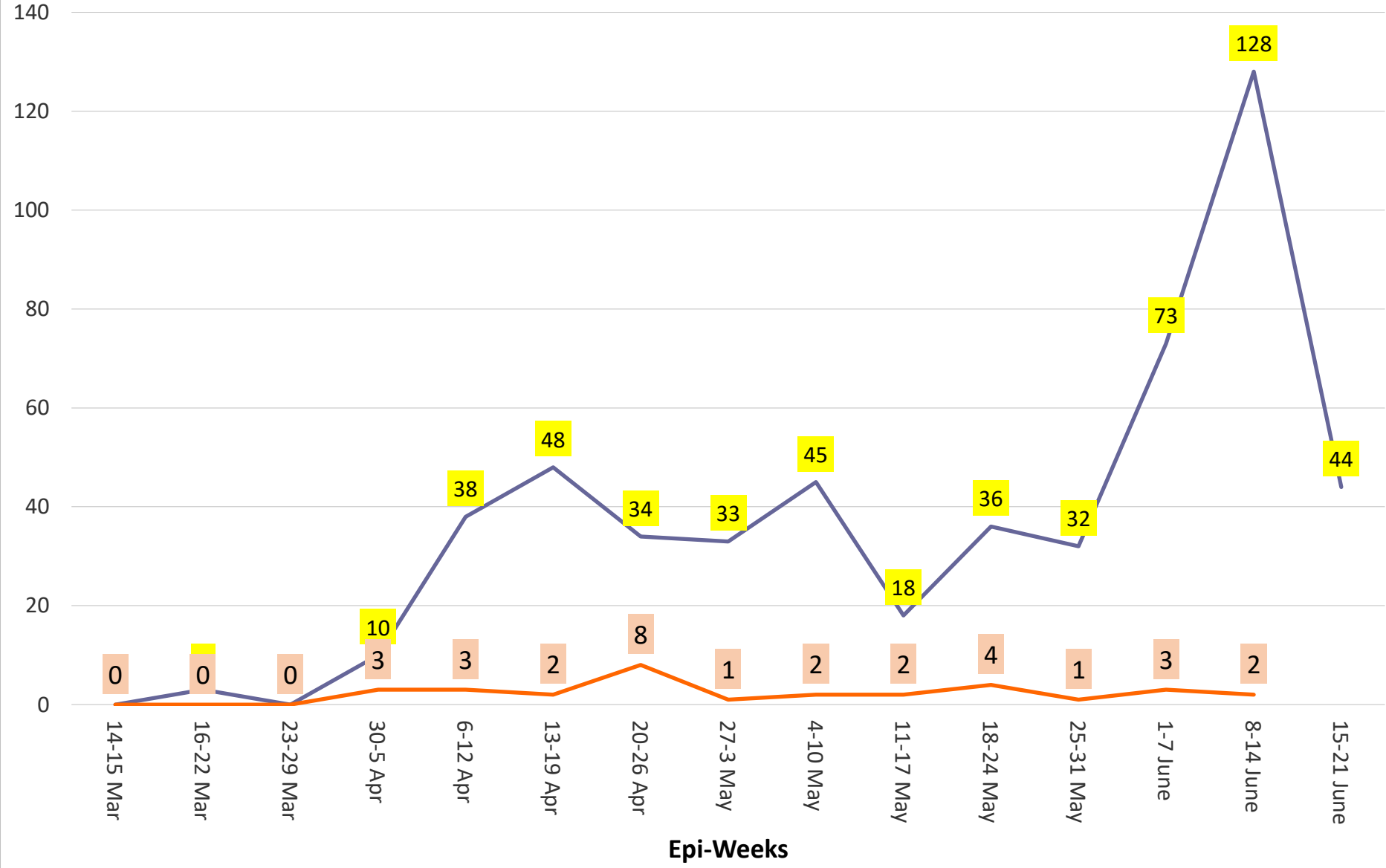
Summary of COVID-19 Cases by Reporting County, Liberia, 16 March – 17 June 2020

County			Confirmed Cumulative Cases
	Laboratory Confirmed Cases	Cases on Contact List	
Bomi	0	0	1
Bong	4	0	11
Gbarpolu	0	0	8
Grand Bassa	0	0	9
Grand Cape Mount	0	0	1
Grand Kru	0	0	1
Lofa	0	0	4
Margibi	0	0	30
Maryland	0	0	1
Montserrado	21	0	460
Nimba	1	0	13
River Gee	0	0	1
Sinoe	0	0	2
NATIONAL	26	0	542

Demographic Breakdown (Gender & Age) of Confirmed COVID-19 Cases (16 March – 17 June 2020)

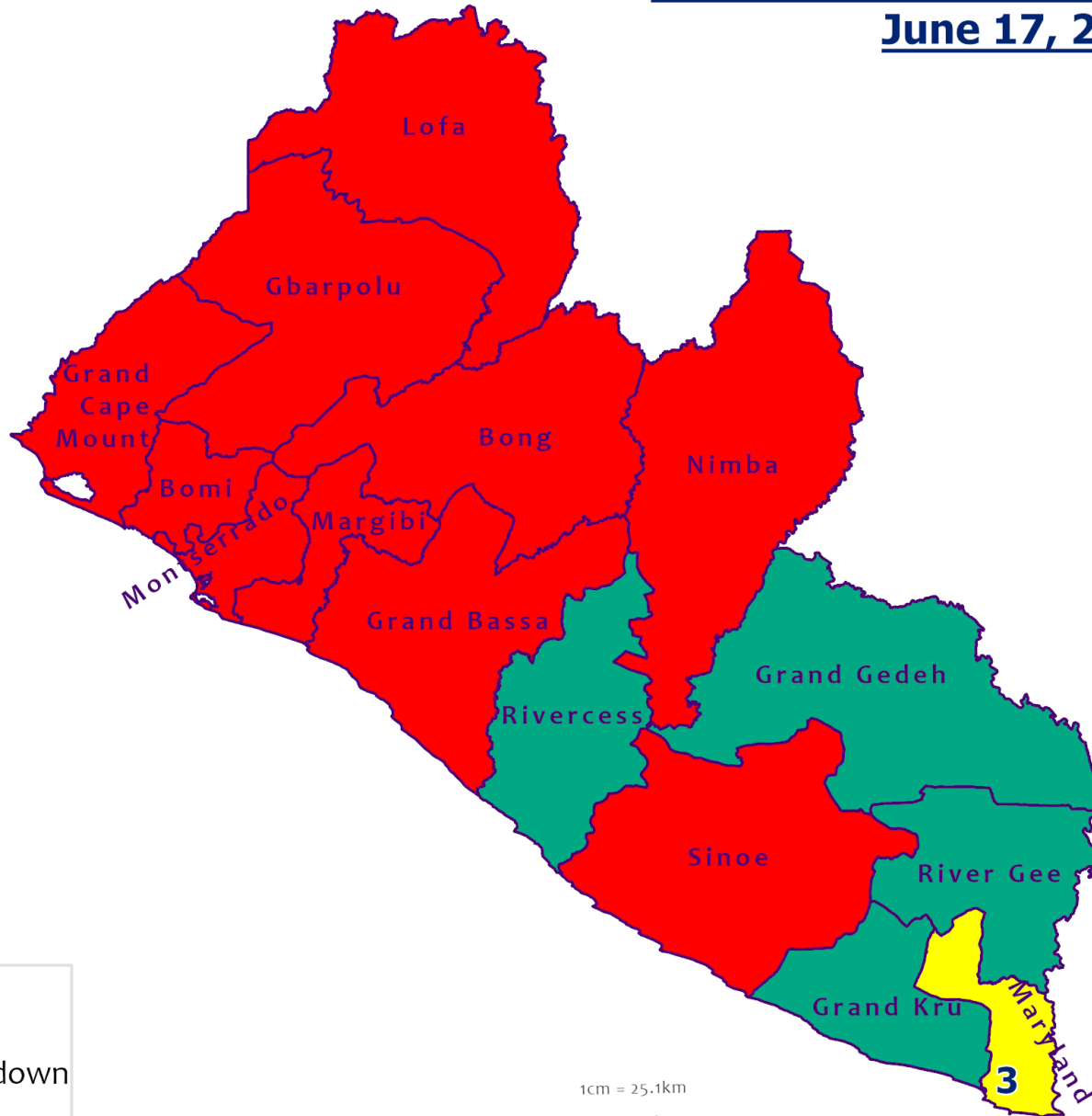
County	<15 years		15 - 34		35 - 54		55+		All ages		Total Confirmed
	M	F	M	F	M	F	M	F	M	F	
Bomi	0	0	0	0	0	0	0	1	0	1	1
Bong	0	0	0	0	3	4	2	2	5	6	11
Gbarpolu	1	2	0	1	2	1	1	0	4	4	8
Grand Bassa	1	0	1	6	0	1	0	0	2	7	9
Grand Cape Mount	0	0	0	0	0	0	1	0	1	0	1
Grand Kru	0	0	1	0	0	0	0	0	1	0	1
Lofa	0	0	0	0	2	0	2	0	4	0	4
Margibi	2	1	4	5	6	4	4	4	16	14	30
Maryland	0	0	1	0	0	0	0	0	1	0	1
Montserrado	23	24	116	61	118	47	50	21	307	153	460
Nimba	0	0	2	0	7	2	1	1	10	3	13
River Gee	0	0	0	0	1	0	0	0	1	0	1
Sinoe	0	0	0	0	2	0	0	0	2	0	2
National	27	27	125	73	141	59	61	29	354	188	542

COVID-19 Cases and Deaths by Epi-week (Mar. 16 - June 14)








Counties COVID-19 Status in Liberia June 17, 2020



County Status

-  Preparedness
-  28-Day Countdown
-  Response

1cm = 25.1km
0 15 30 60 90
Kilometers



Data Source: NPHI/MoH

Demographic Breakdown (Gender & Age) of Confirmed COVID-19 Deaths (16 March – 17 June 2020)

County	<15 years		15 - 34		35 - 54		55+		All ages		Total Confirmed
	M	F	M	F	M	F	M	F	M	F	
Bong	0	0	1	0	0	0	3	0	4	0	4
Gbarpolu	0	0	0	0	1	0	1	0	2	0	2
Grand Bassa	0	0	0	0	0	0	0	0	0	0	0
Grand Kru	0	0	0	0	0	0	0	0	0	0	0
Lofa	0	0	0	0	0	0	2	0	2	0	2
Margibi	0	0	0	0	0	0	0	1	0	1	1
Maryland	0	0	0	0	0	0	0	0	0	0	0
Montserrado	0	0	0	0	8	4	6	2	14	6	20
Nimba	0	0	0	0	2	1	1	0	3	1	4
River Gee	0	0	0	0	0	0	0	0	0	0	0
Sinoe	0	0	0	0	0	0	0	0	0	0	0
National	0	0	1	0	11	5	13	3	25	8	33

Summary of COVID-19 Deaths by Reporting County, Liberia, 16 March – 17 June 2020

County	DAILY REPORT							Confirmed Deaths on Contact List	Cumulative Deaths
	New Suspected Deaths	Laboratory Confirmed Deaths					Total in Community		
		COVID-19 Treatment Unit	Total in COVID-19 Treatment Unit	Health Facility	Total in Health Facility	Community			
Bong	0	0	0	0	3	0	1	0	4
Gbarpolu	0	0	0	0	2	0	0	0	2
Grand Bassa	0	0	0	0	0	0	0	0	0
Grand Kru	0	0	0	0	0	0	0	0	0
Lofa	0	0	0	0	2	0	1	0	3
Maryland	0	0	0	0	0	0	0	0	0
Margibi	0	0	0	0	1	0	0	0	1
Montserrado	0	0	4	0	5	0	11	0	20
Nimba	0	0	0	0	3	0	1	0	4
River Gee	0	0	0	0	0	0	0	0	0
Sinoe	0	0	0	0	0	0	0	0	0
National	0	0	4	0	15	0	14	0	33

The Liberia Case Fatality rate (CFR) officially considered is for deaths that occurred among patients in care at the COVID-19 treatment units across the country. As of 1 June 2020 , a total of 4 deaths have been recorded CFR=1.12%. The country is however keeping active surveillance on community deaths and deaths in non COVID-19 treatment health units.

Daily and Cumulative Healthcare Worker (HCW) COVID-19 Cases and Deaths by County, Liberia, 16 March – 17 June 2020

County	DAILY REPORT						CUMULATIVE CASES (ALIVE & DEAD)	
	New Suspected & High Risk Cases (Alive)			New Suspect Death	Laboratory Confirmed Cases	Confirmed Cases on Contact List	Confirmed	Deaths
	Suspect	High Risk	Total					
Bong	0	0	0	0	0	0	2	2
Gbarpolu	0	0	0	0	0	0	1	1
Grand Bassa	0	0	0	0	0	0	1	0
Grand Kru	0	0	0	0	0	0	0	0
Lofa	0	0	0	0	0	0	0	0
Margibi	0	0	0	0	0	0	9	1
Maryland	0	0	0	0	0	0	0	0
Montserrado	0	0	0	0	0	0	36	1
Nimba	0	0	0	0	0	0	1	0
River Gee	0	0	0	0	0	0	0	0
Sinoe	0	0	0	0	0	0	0	0
NATIONAL	0	0	0	0	0	0	50	5

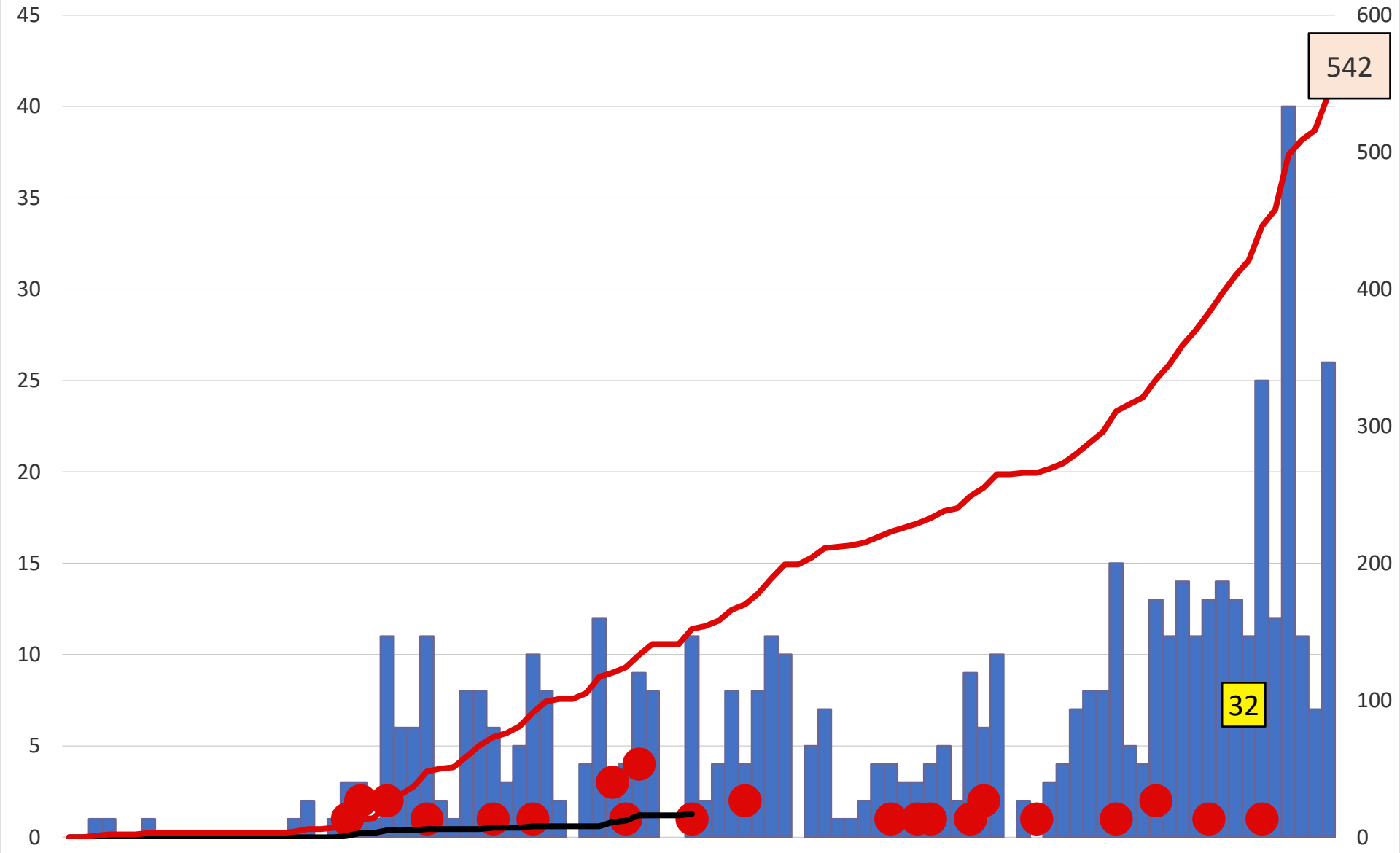
Cadre Cases and Deaths by Health Care Workers (16 March – 17 June 2020)

Health Care Worker Cadre	Montserratado		Margibi		Nimba		River Gee		Sinoe		Grand Kru		Gbarpolu		Bong		Lofa		Grand Bassa		National (Total)	
	Cases	Deaths	Cases	Deaths	Cases	Deaths	Cases	Deaths	Cases	Deaths	Cases	Deaths	Cases	Deaths	Cases	Deaths	Cases	Deaths	Cases	Deaths	Cases	Deaths
Doctors	5	0	0	0	1	0	0	0	0	0	0	0	0	0	0	0	0	0	0	0	6	0
Pharmacists	1	0	0	0	0	0	0	0	0	0	0	0	0	0	0	0	0	0	0	0	1	0
Nurses	15	1	3	0	0	0	0	0	0	0	0	0	1	1	0	0	0	0	1	0	20	2
Radiologist	1	0	0	0	0	0	0	0	0	0	0	0	0	0	0	0	0	0	0	0	1	0
Physician Assistants	0	0	0	0	0	0	0	0	0	0	0	0	0	0	0	0	0	0	0	0	0	0
Lab Technician	4	0	1	0	1	0	0	0	0	0	0	0	0	0	0	0	0	0	0	0	6	0
Environmental Health Technicians	6	0	0	0	0	0	0	0	0	0	0	0	0	0	0	0	0	0	0	0	6	0
Microbiologist	1	0	0	0	0	0	0	0	0	0	0	0	0	0	0	0	0	0	0	0	1	0
Epidemiologist	2	0	0	0	0	0	0	0	0	0	0	0	0	0	0	0	0	0	0	0	2	0
Dieticians	0	0	5	1	0	0	0	0	0	0	0	0	0	0	0	0	0	0	0	0	5	1
Dispenser	0	0	0	0	0	0	0	0	0	0	0	0	0	0	1	1	0	0	0	0	1	1
Licensed Practical Nurse (LPN)	0	0	0	0	0	0	0	0	0	0	0	0	0	0	1	1	0	0	0	0	0	1
Psychosocial Worker	1	0	0	0	0	0	0	0	0	0	0	0	0	0	0	0	0	0	0	0	1	0
Total:	36	1	9	1	2	0	0	0	0	0	0	0	1	1	2	2	0	0	1	0	50	5

Suspected and High Risk Cases and Deaths (16 March – 17 June 2020)

County	New Suspected	Cumulative Suspected	New High Risk	Cumulative High Risk	New Suspected Deaths	Cumulative Suspected Deaths
Montserrado	178	6	4072	0	0	0
Margibi	0	3	0	24	0	1
Maryland	0	17	0	13	0	4
River Gee	0	5	0	8	0	0
Lofa	2	40	0	36	0	35
Bomi	0	1	0	21	0	0
Sinoe	0	30	0	43	0	1
Grand Kru	0	14	0	21	0	1
Gbarpolu	0	14	0	8	0	0
Grand Bassa	0	40	0	33	0	0
Nimba	1	72	4	112	0	11
Bong	0	11	16	46	0	2
National	181	253	4092	365	0	55

EPI-Curve of Confirmed Cases and Deaths

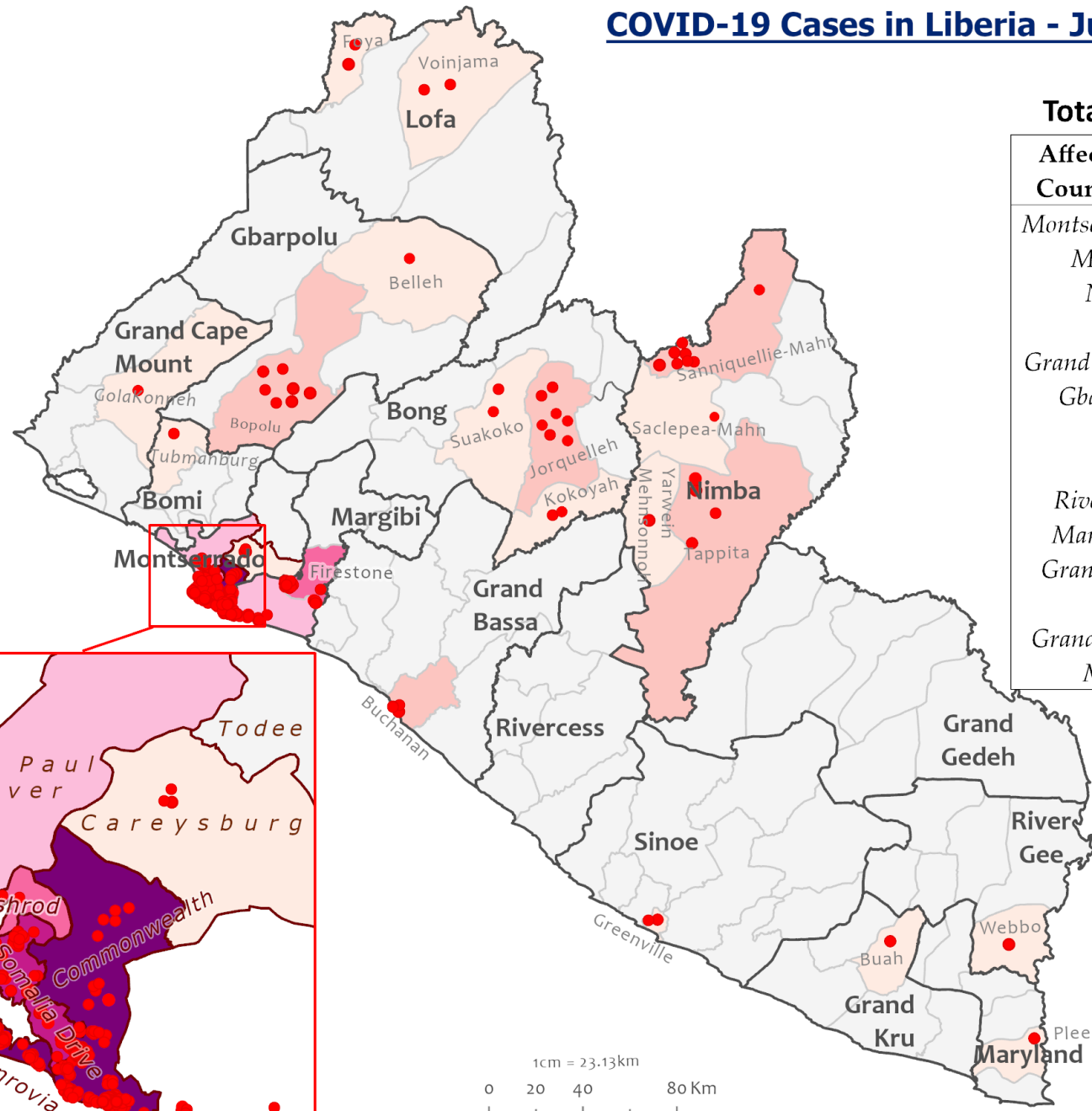
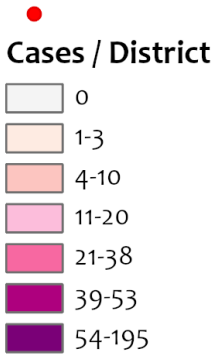


COVID-19 Cases in Liberia - June 17, 2020



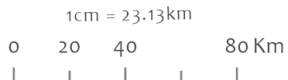
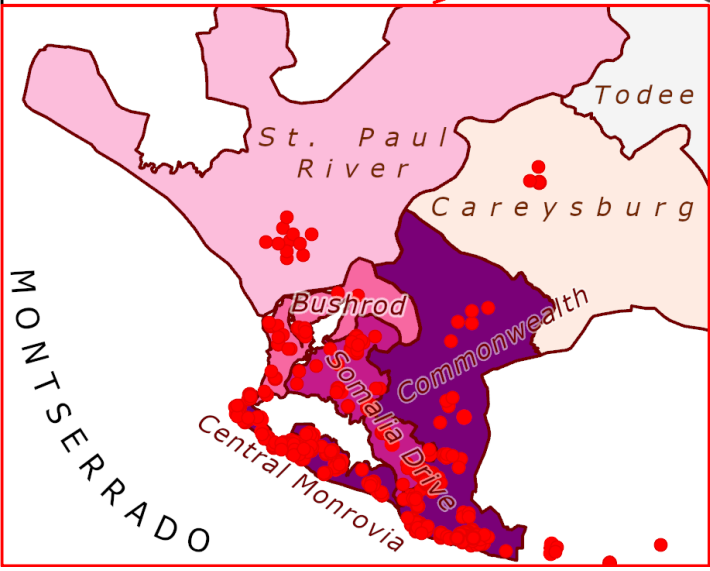
Legend

Confirmed Cases



Total Cases: **542**

Affected Counties	Cumulative Cases
Montserrado	460
Margibi	30
Nimba	13
Bong	11
Grand Bassa	9
Gbarpolu	8
Lofa	4
Sinoe	2
River Gee	1
Maryland	1
Grand Kru	1
Bomi	1
Grand Cape Mount	1



Precautionary Observation Centers (POC): Admission and Discharges

County	Precautionary Observation Centers				Cumulative Move to Treatment
	New admissions	Currently in POC	Daily Discharges	Cumulative Discharges (not including transferred)	
Bomi	0	0	0	0	0
Bong	0	0	0	0	0
Gbarpolu	0	0	0	0	0
Grand Bassa	0	4	0	29	0
Margibi	0	30	0	48	0
Maryland	0	4	0	41	0
Montserrado	0	63	0	35	8
Nimba	0	3	0	27	0
River Gee	0	0	0	0	0
Sinoe	0	2	0	126	0
Lofa	0	14	0	116	0
NATIONAL	0	120	0	422	8

Treatment Unit Daily Report – June 17, 2020

14 Military Hospital Treatment Unit						
New admissions	Daily Discharges	Cumulative Recoveries	Daily Deaths	Cumulative Deaths	*Currently in treatment	Number of Vacant Beds
4	10	231	0	3	93	17

Demographic Breakdown of Cases at 14 Military Hospital											
Total Census	Total Adult	Total Children	Total Female	Total Male	Total Confirm	Others	Pregnant	Children			
								<1	1-5	6-10	11-17
93	81	12	34	59	92	1	1	0	3	4	5

*92 confirmed cases + 1 Special case = 93 total patients

Recoveries from Treatment Units (16 March – 17 June 2020)

Treatment Unit	New admissions	Cumulative admissions	Recoveries	Cumulative Recoveries
14 Military Hospital, Montserrado	4	318	10	223
Chief Jallahlone Hospital, Gbarpolu	0	1	0	1
Jackson F. Doe Hospital, Nimba	0	2	0	1
Ganta Methodist Hospital, Nimba	0	1	0	1
Pleebo Health Center, Maryland	0	1	0	1
Rally Time Hospital, Grand Kru	0	0	0	1
Fish Town Hospital, River Gee	0	1	0	1
St. Timothy Hospital, Grand Cape Mount	1	1	0	0
Tellewoyan Hospital, Lofa	0	2	0	0
Phebe Hospital, Bong	0	0	0	0
Liberia Government Hospital, Grand Bassa	0	3	0	0
Arcelor Mittal, Grand Bassa	0	5	0	5
Duside Hospital, Margibi	0	20	0	15
F. J. Grant Hospital, Sinoe	0	2	0	1
Total	5	357	10	250

Admissions, Currently in Treatment, and Discharges

COVID-19 Treatment Units									
Treatment Unit	New admissions	Cumulative admissions	Discharges	Cumulative Discharges	Currently in Treatment Unit	Total Males	Total Females	0-35 yrs	36+ yrs
Chief Jallahlone Hospital, Gbarpolu	0	1	0	1	0	0	0	0	0
Jackson F. Doe Hospital, Nimba	0	2	0	1	1	0	1	0	1
Ganta Methodist Hospital, Nimba	0	1	0	1	0	0	0	0	0
Pleebo Health Center, Maryland	0	1	0	1	0	0	0	0	0
St. Timothy Hospital, Grand Cape Mount	1	1	0	0	1	1	0	0	1
Tellewoyan Hospital, Lofa	0	2	0	0	2	2	0	0	2
Phebe Hospital, Bong	0	0	0	0	0	0	0	0	0
Arcelor Mittal, Grand Bassa	0	5	0	5	0	0	0	0	0
Liberia Government Hospital, Grand Bassa	0	3	0	0	2	1	1	1	1
Duside Hospital, Margibi	0	20	0	15	5	4	1	1	4
F. J. Grant Hospital, Sinoe	0	2	0	1	1	1	0	0	1
Total	1	38	0	25	12	9	3	2	10

Laboratory Samples Evaluated – June 17, 2020

Laboratory	Total	New Positive	Repeat Positive	Initial Negative	Repeat Test Negative	Pending Lab Result
NPHRL	255	26	2	211	9	7
Total	255	26	2	211	9	7

Summary of COVID-19 Contact Tracing in Response Counties

County	New Contacts Line listed	Cumulative Contacts	No. of Health Care Workers as Contacts	Cumulative no. of Health Care Workers as contacts	Contacts became a case	Cumulative contacts that became a case	Contacts Completed 14 Days	Cumulative Contacts Completing 14 Days	Contacts Under Follow-up	Contacts lost to Follow-up
Montserratado	70	2933	0	313	2	134	3	2269	601	3
Margibi	0	289	0	91	0	22	0	160	107	0
Grand Bassa	0	116	0	64	0	8	2	66	42	0
Maryland	0	52	0	16	0	0	0	52	2	0
Sinoe	0	128	0	15	0	0	22	126	2	0
Gbarpolu	0	76	0	12	0	6	13	53	9	0
Lofa	5	255	0	30	0	3	0	114	138	3
Nimba	13	436	0	29	1	4	0	353	80	2
Bong	0	46	0	16	0	1	0	0	40	2
Grand CapeMount	19	19	0	0	0	0	0	0	19	0
Bomi	0	27	1	5	0	0	0	0	27	0
National	107	4377	1	591	3	178	40	3193	1067	10

Active Case Finding (16 March – 17 June 2020)

County	Visitation				Identification, Investigation & Testing									Supervision	
	No. of communities Assigned	No. of communities Visited	No. of Households Assigned	No. of Households Visited	Sick persons Identified	Cumulative Sick persons identified	Sick persons referred for Investigation	Cumulative Sick person referred for Investigation	Sick persons Investigated	Cumulative Sick persons Investigated	Sick persons investigated and referred for testing	Cumulative Sick persons investigated and referred for testing	No. of Sick persons followed-up today	No. of supervision visits	No. of Supervisory Calls
Bomi	127	21	200	200	0	0	0	0	0	0	0	0	0	2	0
Bong	25	25	15564	230	0	0	0	0	0	0	0	0	0	0	0
Montserrado	250	0	0	47033	17	383	17	248	17	239	17	190	0	0	0
Margibi	15	15	15	139	0	4	0	4	0	16	0	10	7	8	7
Maryland	9	9	126	126	1	338	1	338	1	338	0	0	1	0	0
Grand Cape Mount	1	1	19	19	0	0	0	0	0	0	0	0	0	0	0
Sinoe	90	90	5232	3269	15	15	15	15	15	33	0	0	15	3	7
Grand Kru	75	50	1000	1000	2	7	2	7	2	7	1	7	2	5	3
Gbarpolu	13	9	1750	27	5	21	2	18	3	19	0	0	0	0	0
Grand Bassa	11	12	158	158	2	60	2	60	2	60	0	0	0	0	0
Nimba	430	359	2660	1422	1	16	1	16	1	16	0	11	4	0	0
Lofa	159	162	487	512	0	40	0	40	0	40	0	40	0	51	102
National	1194	741	27053	53977	41	824	38	686	39	708	18	258	29	69	119

Thank you for Listening