



Situation Report: No. 66

Date of onset of outbreak: 16 March 2020

Reporting date: 20 May 2020

Data Source: County Incident Management & National Reference Laboratory

I. Highlights

CUMULATIVE CONFIRMED CASES: 240, DEATHS: 23 (2 in TU)

- **Two (2) new confirmed cases were reported on 20 May 2020 from 34 samples tested by the national Reference Laboratory of Liberia (NRL)**
 - Montserrado and Margibi counties reported one of the confirmed cases each
- **Cumulatively since March 16 -May 20, 2020,**
 - Two hundred-forty (240) have been confirmed including 44 health workers
 - Three of the nine counties with ongoing outbreak continue to report new confirmed cases and remain the hotspot counties for the ongoing pandemic: **Montserrado (201), Margibi (18), and Gbarpolu (7)**
 - 98.7% of confirmed cases are locally transmitted and 1.3% remains imported
- **A total of 23 deaths (CFR-9.6%)** in confirmed cases including three health workers have been recorded
 - **57%** of the reported deaths were community deaths that were swabbed by the surveillance system
- **Cumulatively, 131(54.6%) case patients** have been discharged and reintegrated into their communities
 - A total of fifty-eight (58) case patients remain in admission including three new admission on 20 May 2020
- **The age range among confirmed cases is 1 month to 74 years with median age 42 years**
- **A total of 2,535 contacts have been recorded**
 - **76(3%) have tested positive;** 1,804 (71.2%) have completed 14 days follow up
 - while 641 (25.3%) remains under active follow-up with 94.2% seen in the last 24 hours
- **A total of fifty-two (52) high risk contacts** remain under observation in four counties
- **The National Incident Management System (IMS)** is coordinating the affected counties led COVID-19 response with support from partners and central government

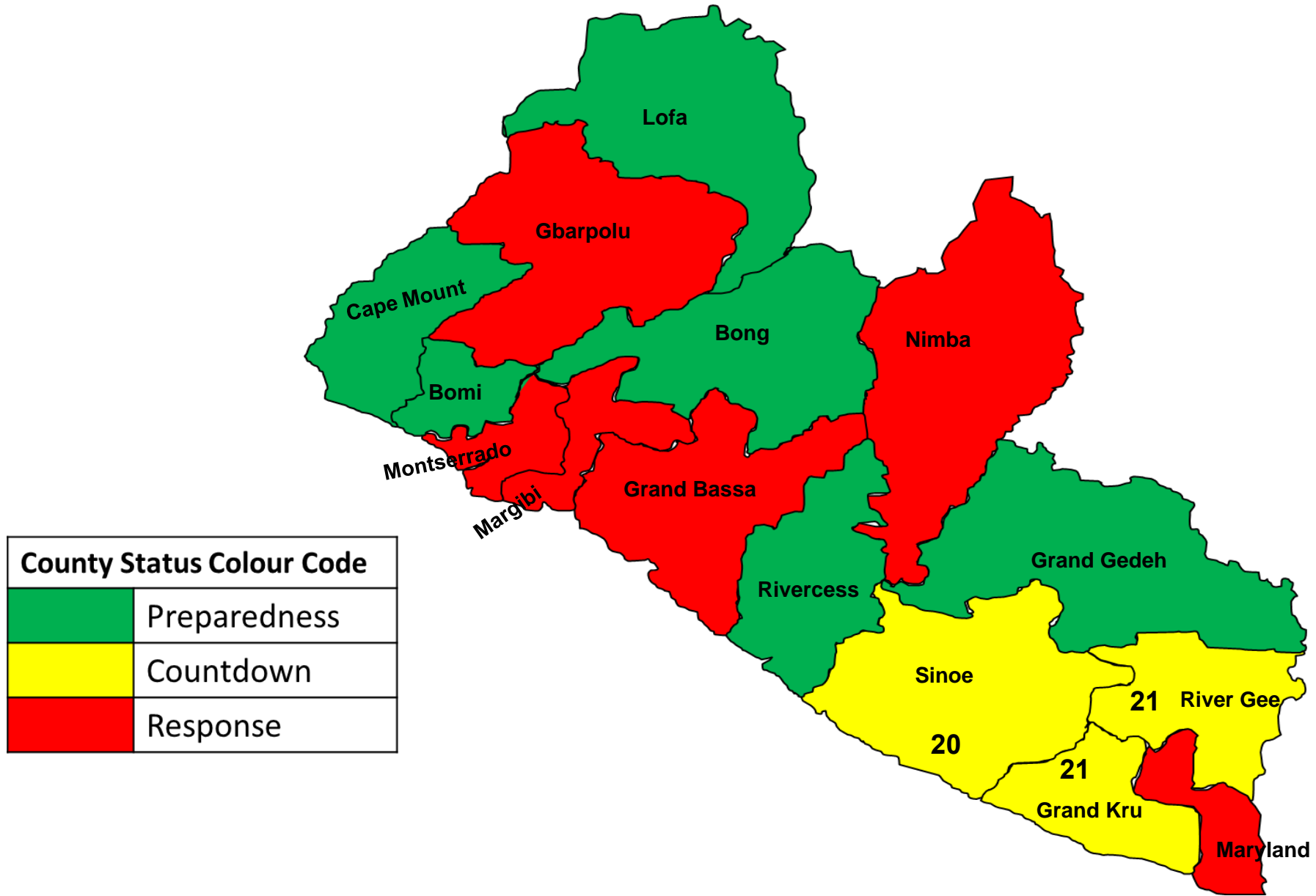


Figure 1: Geographical Distribution of COVID-19 Response Status by County, Liberia, March 16 – May 20, 2020

Table 1: Distribution of COVID-19 Response Status by County, Liberia, March 16 – May 20, 2020

County	DAILY REPORT					CUMULATIVE CASES
	New Suspected and High-Risk Cases			Laboratory Confirmed Cases	Confirmed Cases on Contact List	
	Suspect	High Risk	Total			
Gbarpolu	0	0	0	0	0	7
Grand Bassa	0	0	0	0	0	4
Grand Kru	0	0	0	0	0	1
Margibi	0	1	1	1	0	18
Maryland	0	0	0	0	0	1
Montserrado	0	0	0	1	0	201
Nimba	0	0	0	0	0	6
River Gee	0	0	0	0	0	1
Sinoe	0	0	0	0	0	1
NATIONAL	0	1	1	2	0	240

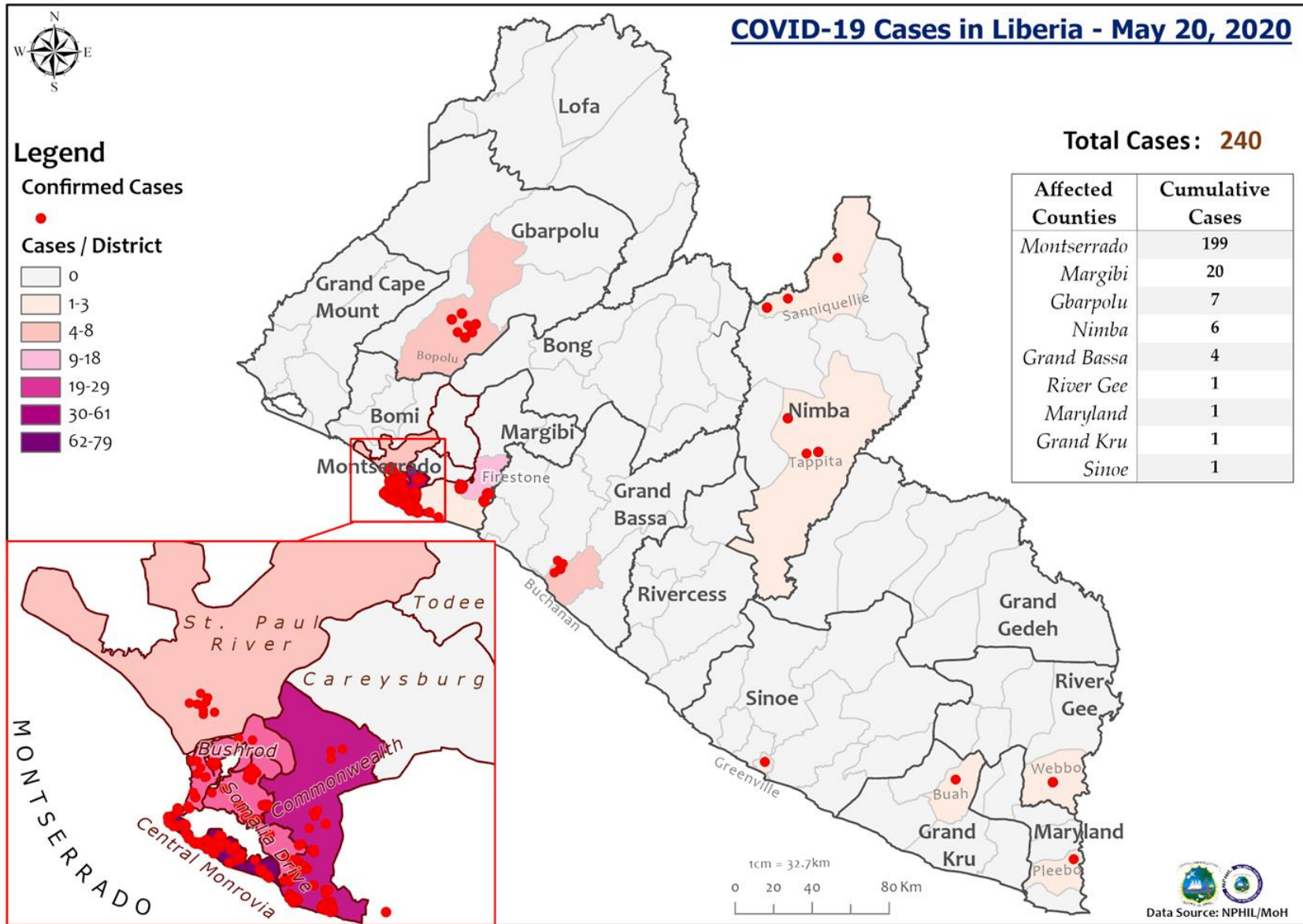


Figure 2: Geographical Distribution of COVID-19 Cases by County, Liberia, March 16 – May 20, 2020

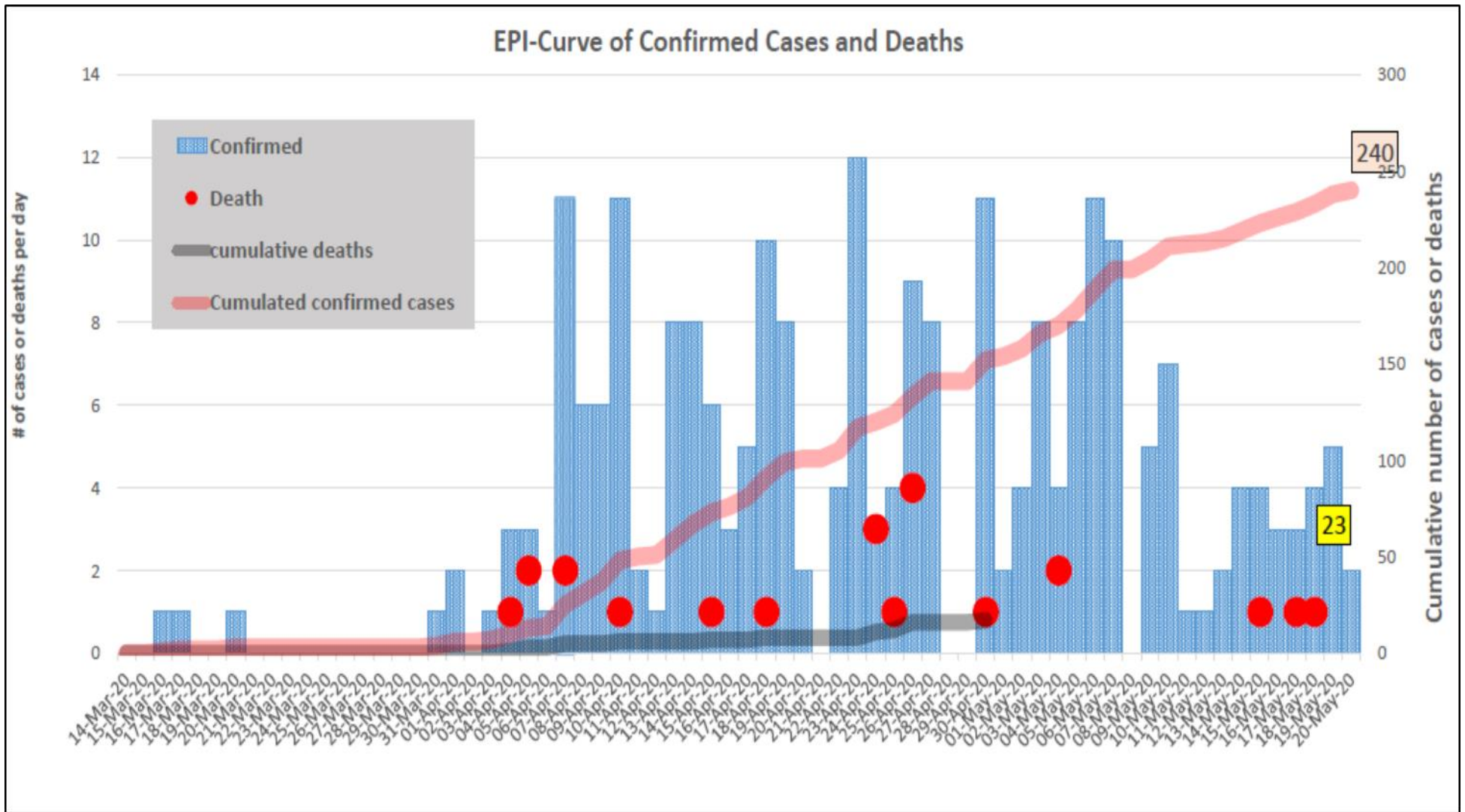


Figure 3: Epi-curve for COVID 19 Cases in Liberia, March 14 – 20 May 2020

Table 2: Number of Contacts line listed and monitored, Liberia, March 16 – May 20, 2020

County	New Contacts Line listed	Cumulative Contacts	No. of Health Care Workers as Contacts	Cumulative no. of Health Care Workers as contacts	Contacts became a case	Cumulative contacts that became a case	Contacts Completed 14 Days	Cumulative Contacts Completing 14 Days	Contacts Under Follow-up	Contacts lost to Follow-up
Montserrado	0	1659	0	256	0	54	0	1185	348	126
Margibi	4	161	0	91	1	15	0	105	53	0
Grand Bassa	0	46	0	37	0	0	0	0	46	0
Maryland	0	52	0	16	0	0	1	52	0	0
River Gee	0	72	0	1	0	0	0	0	72	0
Sinoe	0	104	0	15	0	0	0	82	22	0
Grand Kru	0	117	0	0	0	1	0	114	3	0
Gbarpolu	0	47	0	8	0	5	0	0	47	3
Nimba	0	277	0	24	0	1	0	266	50	0
National	4	2535	0	448	1	76	1	1804	641	129

Table 3: Number of cases currently in Treatment Units, Liberia, March 16 - May 20, 2020

COVID-19 Treatment Units									
Treatment Unit	New admissions	Cumulative admissions	Discharges	Cumulative Discharges	Currently in Treatment Unit	Total Males	Total Females	0-35 yrs	36+ yrs
14 Military Hospital, Montserrado County	3	162	3	127	35	137	64	72	129
Chief Jallahlone Hospital, Gbarpolu	0	1	0	0	1	3	4	3	4
Rally Time Hospital, Grand Kru	0	1	1	1	0	1	0	1	1
Jackson F. Doe Hospital, Nimba	0	1	0	0	1	3	1	0	5
Ganta Methodist Hospital, Nimba	0	1	0	1	0	1	1	0	1
Pleebo Health Center, Maryland	0	1	0	0	1	1	0	1	0
Fish Town Hospital, River Gee	0	1	0	1	0	1	0	0	1
Buchanan, Grand Bassa	0	4	0	0	4	1	3	4	0
Duside Hospital, Margibi	1	16	0	0	16	6	12	6	12
F. J. Grant Hospital, Sinoe	0	1	0	1	0	1	0	0	1
Total	4	189	4	131	58	155	85	87	153

II. Situation Context

Liberia reported its first confirmed case of the COVID-19 on 16 March 2020 in Monrovia, the country's capital. As of 20 May 2020, the country had recorded two hundred forty (240) confirmed cases of COVID-19 including twenty (23) death (CFR=9.6%) with 2,535 contacts registered. Montserrado County remains the Epi center 201 (84%) of the confirmed cases including 16 (78%) deaths while the rest of the confirmed cases reported from; Margibi (18) including one (1) death; Gbarpolu (7) including (2) deaths; Nimba County (6) including 3 deaths; Grand Bassa (4), Grand Kru (1), Sinoe (1), River Gee (1) and Maryland (1). Liberia has begun the testing of community dead bodies of which twelve (12) of the community deaths have tested positive for COVID-19. Due to prompt treatment at the treatment centers, Liberia recovery rate continues to improve at 131 (54.6%) as of 20 May 2020.

The risk of transmission remains very high largely due to high population movements in Montserrado as the county is home to approximately 1,500,000 (1/3) of the country total population while local transmission mainly from contacts of confirmed cases has accounted for about 98% of the cases.

III. Public Health Actions initiated following confirmation

1. Coordination

- In an effort to reduce or mitigate institutional transmission, the Incident management system (IMS) has instructed all agencies of government including national and International partners that attend the IMS meetings to do voluntary tests for COVID-19
- The National IMS through the President Office has mandated all citizens to wear masks when leaving their homes in an effort to reduce or mitigate the spread of the COVID-19 outbreak

2. Epidemiology and Surveillance

- Reclassification of cases are ongoing at national and sub national levels

3. Case Management

- A total of fifty-eight (58) case patients are being managed at seven treatment centers with 68% being managed in Montserrado county

4. Laboratory

- The laboratory has tested two thousand three hundred- seven (2,570) samples with 240 testing positive for COVID-19
- Sample collection materials including swabs/VTM are pre-positioned in counties to support COVID-19 sample collection

5. Infection Prevention and Control (IPC)

- Reinforcing hand washing in all public areas in the county (markets, health facilities, public offices, check points etc.)

6. Psychosocial

- Continuous provision of cognitive behavioral therapy, interpersonal therapy, motivational therapy Psychoeducation, linking patients with their families and home-based support to cases, contacts and relatives at POCs, Isolation centers and treatment centers

7. Risk Communication and community engagement

- Airing of GOL-validated radio jingles on 18 stations across the country

IV. Challenges

- Inadequate financial and logistical resources for response activities;

V. Next Steps/Recommendations

- Continued active participation in Community Engagement, Risk Communication, and Protection Pillars, additional engagement in EPI/Surveillance Pillar
- Continue epidemiological investigations to link all the reported confirmed cases
- Mobilize additional resources to support on-going response activities

For comments or questions, please contact

Luke Bawo

Epi-surveillance Pillar Lead

National Incident Management System

Email: lukebawo@gmail.com

Phone: +231 77793 2220

Hon. Dr Wilhelmina Jallah

Incident Manager, Minister of Health

Email: wjallah@gmail.com
