



Liberia COVID-19 Daily Sitrep 405 (24th April 2021)

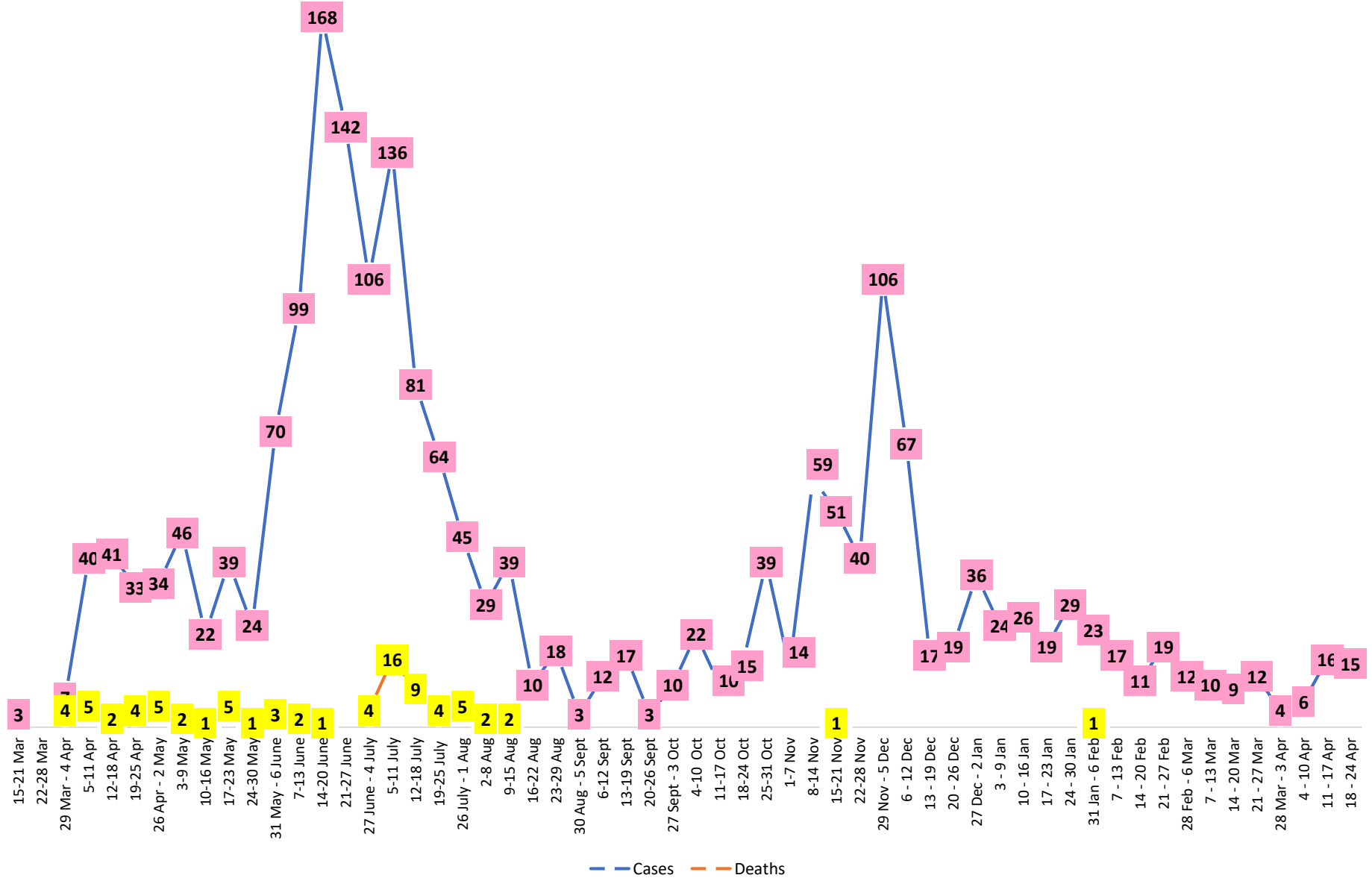
Summary of COVID-19 Cases by Reporting County, Liberia, 16 March 2020 – 24 April 2021

| | | | |
|-------------------------|----------|----------|-------------|
| Bong | 0 | 0 | 54 |
| Gbarpolu | 0 | 0 | 10 |
| Grand Bassa | 0 | 0 | 59 |
| Grand Cape Mount | 0 | 0 | 20 |
| Grand Kru | 0 | 0 | 18 |
| Grand Gedeh | 0 | 0 | 16 |
| Lofa | 0 | 0 | 45 |
| Margibi | 0 | 0 | 101 |
| Maryland | 0 | 0 | 34 |
| Montserrado | 1 | 0 | 1599 |
| Nimba | 0 | 0 | 72 |
| Rivercess | 0 | 0 | 5 |
| River Gee | 0 | 0 | 36 |
| Sinoe | 0 | 0 | 6 |
| NATIONAL | 1 | 0 | 2098 |

Demographic Breakdown (Gender & Age) of Confirmed COVID-19 Cases (16 March 2020 – 24 April 2021)

| County | <15 years | | 15 - 34 | | 35 - 54 | | 55+ | | All ages | | Total Confirmed |
|--------------------|-----------|-----------|------------|------------|------------|------------|------------|-----------|-------------|------------|-----------------|
| | M | F | M | F | M | F | M | F | M | F | |
| Bomi | 2 | 2 | 3 | 5 | 7 | 3 | 0 | 1 | 12 | 11 | 23 |
| Bong | 3 | 1 | 4 | 6 | 20 | 9 | 8 | 3 | 35 | 19 | 54 |
| Gbarpolu | 1 | 2 | 0 | 2 | 3 | 1 | 1 | 0 | 5 | 5 | 10 |
| Grand Bassa | 11 | 2 | 9 | 11 | 13 | 8 | 3 | 2 | 36 | 23 | 59 |
| Grand Cape Mount | 0 | 0 | 11 | 0 | 8 | 0 | 1 | 0 | 20 | 0 | 20 |
| Grand Kru | 0 | 0 | 2 | 5 | 4 | 5 | 2 | 0 | 8 | 10 | 18 |
| Grand Gedeh | 0 | 1 | 1 | 2 | 7 | 3 | 2 | 0 | 10 | 6 | 16 |
| Lofa | 3 | 3 | 8 | 3 | 13 | 5 | 8 | 2 | 32 | 13 | 45 |
| Margibi | 6 | 4 | 15 | 13 | 28 | 12 | 15 | 8 | 64 | 37 | 101 |
| Maryland | 2 | 0 | 10 | 6 | 9 | 4 | 1 | 2 | 22 | 12 | 34 |
| Montserrado | 53 | 50 | 373 | 219 | 458 | 196 | 173 | 77 | 1057 | 542 | 1599 |
| Nimba | 1 | 4 | 15 | 10 | 28 | 6 | 5 | 3 | 49 | 23 | 72 |
| Rivercess | 0 | 0 | 2 | 3 | 0 | 0 | 0 | 0 | 2 | 3 | 5 |
| River Gee | 0 | 0 | 4 | 3 | 19 | 5 | 5 | 0 | 28 | 8 | 36 |
| Sinoe | 0 | 0 | 1 | 0 | 4 | 1 | 0 | 0 | 5 | 1 | 6 |
| National | 82 | 69 | 458 | 288 | 621 | 258 | 224 | 98 | 1385 | 713 | 2098 |

COVID-19 WEEKLY EPI-CURVE



Summary of COVID-19 Deaths by Reporting County, Liberia, 16 March 2020 – 24 April 2021

| County | Unconfirmed Suspected Deaths | COVID-19 Treatment Unit | Total in COVID-19 Treatment Unit | Health Facility | Total in Health Facility | Community | Total in Community | Confirmed Deaths on Contact List | Cumulative Deaths |
|------------------|------------------------------|-------------------------|----------------------------------|-----------------|--------------------------|-----------|--------------------|----------------------------------|-------------------|
| Bomi | 0 | 0 | 0 | 0 | 1 | 0 | 0 | 0 | 1 |
| Bong | 0 | 0 | 0 | 0 | 4 | 0 | 1 | 0 | 5 |
| Gbarpolu | 0 | 0 | 0 | 0 | 2 | 0 | 0 | 0 | 2 |
| Grand Bassa | 0 | 0 | 0 | 0 | 0 | 0 | 0 | 0 | 0 |
| Grand Cape Mount | 0 | 0 | 0 | 0 | 0 | 0 | 0 | 0 | 0 |
| Grand Gedeh | 0 | 0 | 0 | 0 | 0 | 0 | 0 | 0 | 0 |
| Grand Kru | 0 | 0 | 0 | 0 | 0 | 0 | 0 | 0 | 0 |
| Lofa | 0 | 0 | 0 | 0 | 6 | 0 | 5 | 0 | 11 |
| Maryland | 0 | 0 | 0 | 0 | 2 | 0 | 0 | 0 | 2 |
| Margibi | 0 | 0 | 2 | 0 | 4 | 0 | 0 | 0 | 6 |
| Montserrado | 0 | 0 | 9 | 0 | 19 | 0 | 16 | 0 | 43 |
| Nimba | 0 | 0 | 2 | 0 | 5 | 0 | 4 | 0 | 11 |
| Rivercess | 0 | 0 | 0 | 0 | 1 | 0 | 1 | 0 | 2 |
| River Gee | 0 | 0 | 0 | 0 | 0 | 0 | 0 | 0 | 0 |
| Sinoe | 0 | 0 | 0 | 0 | 1 | 0 | 0 | 0 | 1 |
| National | 0 | 0 | 13 | 0 | 45 | 0 | 27 | 0 | 85 |

The Liberia Case Fatality rate (CFR) officially considered is for deaths that occurred among patients in care at the COVID-19 treatment units across the country. As of 30 December 2020 , a total of 13 deaths have been recorded CFR=1.3%. The country is however keeping active surveillance on community deaths and deaths in non COVID-19 treatment health units.

Daily and Cumulative Healthcare Worker (HCW) COVID-19 Cases and Deaths by County, Liberia, 16 March 2020 – 24 April 2021

| County | DAILY REPORT | | | | | | CUMULATIVE CASES (ALIVE & DEAD) | |
|-----------------|---|-----------|----------|-------------------|----------------------------|---------------------------------|---------------------------------|----------|
| | New Suspected & High Risk Cases (Alive) | | | New Suspect Death | Laboratory Confirmed Cases | Confirmed Cases on Contact List | Confirmed | Deaths |
| | Suspect | High Risk | Total | | | | | |
| Bomi | 0 | 0 | 0 | 0 | 0 | 0 | 5 | 0 |
| Bong | 0 | 0 | 0 | 0 | 0 | 0 | 19 | 3 |
| Gbarpolu | 0 | 0 | 0 | 0 | 0 | 0 | 1 | 0 |
| Grand Bassa | 0 | 0 | 0 | 0 | 0 | 0 | 21 | 0 |
| Grand Gedeh | 0 | 0 | 0 | 0 | 0 | 0 | 2 | 0 |
| Grand Kru | 0 | 0 | 0 | 0 | 0 | 0 | 14 | 0 |
| Lofa | 0 | 0 | 0 | 0 | 0 | 0 | 16 | 0 |
| Margibi | 0 | 0 | 0 | 0 | 0 | 0 | 12 | 1 |
| Maryland | 0 | 0 | 0 | 0 | 0 | 0 | 16 | 0 |
| Montserrado | 0 | 0 | 0 | 0 | 0 | 0 | 88 | 1 |
| Nimba | 0 | 0 | 0 | 0 | 0 | 0 | 14 | 0 |
| Rivercess | 0 | 0 | 0 | 0 | 0 | 0 | 3 | 0 |
| River Gee | 0 | 0 | 0 | 0 | 0 | 0 | 10 | 0 |
| Sinoe | 0 | 0 | 0 | 0 | 0 | 0 | 3 | 0 |
| NATIONAL | 0 | 0 | 0 | 0 | 0 | 0 | 224 | 5 |

Cadre Cases and Deaths by Health Care Workers (16 March 2020 – 24 April 2021)

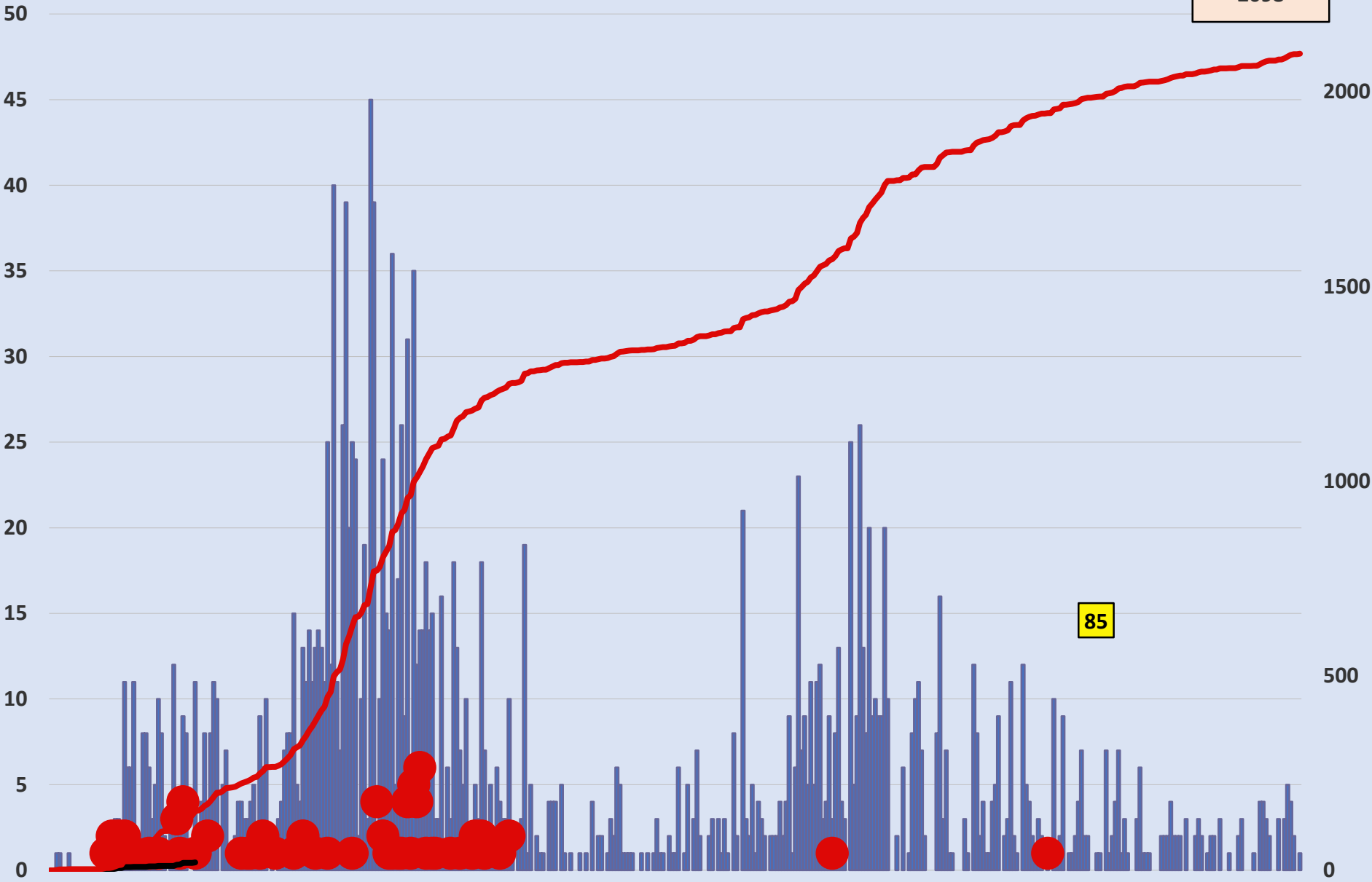
| Health Care Worker Cadre | Montserratado | | Margibi | | Nimba | | River Gee | | Sinoe | | Grand Kru | | Gbarpolu | | Bong | | Lofa | | Grand Bassa | | Maryland | | Bomi | | Rivercess | | Grand Gedeh | | National (Total) | |
|----------------------------------|---------------|----------|-----------|----------|-----------|----------|-----------|----------|----------|----------|-----------|----------|----------|----------|-----------|----------|-----------|----------|-------------|----------|-----------|----------|----------|----------|-----------|----------|-------------|----------|------------------|----------|
| | Cases | Deaths | Cases | Deaths | Cases | Deaths | Cases | Deaths | Cases | Deaths | Cases | Deaths | Cases | Deaths | Cases | Deaths | Cases | Deaths | Cases | Deaths | Cases | Deaths | Cases | Deaths | Cases | Deaths | Cases | Deaths | Cases | Deaths |
| Doctors | 17 | 0 | 1 | 0 | 0 | 0 | 1 | 0 | 0 | 0 | 0 | 0 | 0 | 0 | 1 | 0 | 0 | 0 | 1 | 0 | 0 | 0 | 0 | 0 | 0 | 0 | 0 | 0 | 21 | 0 |
| Pharmacists | 4 | 0 | 0 | 0 | 0 | 0 | 0 | 0 | 0 | 0 | 0 | 0 | 0 | 0 | 0 | 0 | 0 | 0 | 0 | 0 | 0 | 0 | 0 | 0 | 0 | 0 | 0 | 4 | 0 | |
| Nurses | 23 | 1 | 2 | 0 | 2 | 0 | 5 | 0 | 0 | 0 | 2 | 0 | 1 | 1 | 12 | 1 | 8 | 0 | 5 | 0 | 1 | 0 | 1 | 0 | 0 | 0 | 0 | 62 | 3 | |
| Nurse Aid | 0 | 0 | 0 | 0 | 2 | 0 | 0 | 0 | 0 | 0 | 4 | 0 | 0 | 0 | 0 | 0 | 0 | 0 | 8 | 0 | 2 | 0 | 0 | 0 | 0 | 0 | 0 | 16 | 0 | |
| Midwife | 0 | 0 | 0 | 0 | 0 | 0 | 1 | 0 | 0 | 0 | 1 | 0 | 0 | 0 | 1 | 0 | 1 | 0 | 1 | 0 | 0 | 0 | 0 | 0 | 0 | 0 | 0 | 5 | 0 | |
| Physician Assistants | 8 | 0 | 1 | 0 | 1 | 0 | 1 | 0 | 0 | 0 | 1 | 0 | 0 | 0 | 0 | 0 | 1 | 0 | 1 | 0 | 0 | 0 | 0 | 0 | 0 | 0 | 0 | 14 | 0 | |
| Lab Technician | 9 | 0 | 1 | 0 | 2 | 0 | 0 | 0 | 1 | 0 | 1 | 0 | 0 | 0 | 0 | 0 | 2 | 0 | 0 | 0 | 10 | 0 | 0 | 0 | 3 | 0 | 0 | 29 | 0 | |
| Environmental Health Technicians | 5 | 0 | 0 | 0 | 0 | 0 | 0 | 0 | 0 | 0 | 0 | 0 | 0 | 0 | 0 | 0 | 0 | 0 | 0 | 0 | 0 | 0 | 0 | 0 | 0 | 0 | 0 | 5 | 0 | |
| Dieticians | 0 | 0 | 7 | 1 | 0 | 0 | 0 | 0 | 0 | 0 | 0 | 0 | 0 | 0 | 0 | 0 | 0 | 0 | 0 | 0 | 0 | 0 | 0 | 0 | 0 | 0 | 0 | 7 | 1 | |
| Hospital Cleaner | 1 | 0 | 0 | 0 | 0 | 0 | 0 | 0 | 0 | 0 | 1 | 0 | 0 | 0 | 1 | 0 | 0 | 0 | 1 | 0 | 2 | 0 | 0 | 0 | 0 | 0 | 0 | 6 | 0 | |
| Others* | 21 | 0 | 0 | 0 | 7 | 0 | 2 | 0 | 2 | 0 | 4 | 0 | 0 | 0 | 4 | 1 | 4 | 0 | 4 | 0 | 1 | 0 | 4 | 0 | 0 | 2 | 0 | 55 | 1 | |
| Total: | 88 | 1 | 12 | 1 | 14 | 0 | 10 | 0 | 3 | 0 | 14 | 0 | 1 | 1 | 19 | 2 | 16 | 0 | 21 | 0 | 16 | 0 | 5 | 0 | 3 | 0 | 2 | 0 | 224 | 5 |

***Others include the following:**

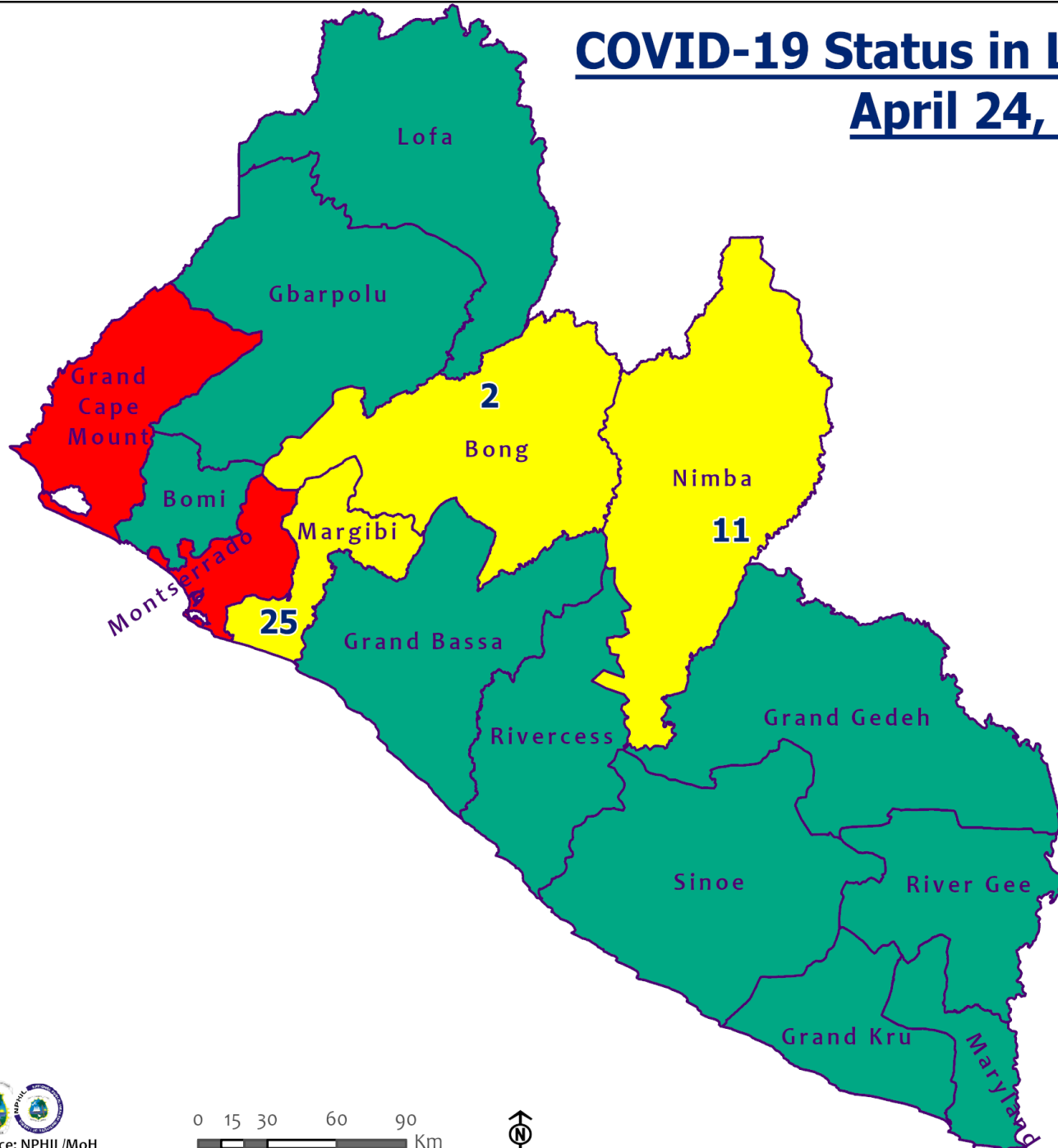
Radiologist, Microbiologist, Epidemiologist, Dispenser, Licensed Practical Nurse, Psychosocial worker, Hygienist, Logistician, Vaccinator, Ambulance Driver, Procurement Officer, Registrar, Accountant, Secretary, Hospital Administrator, Community Health Volunteer, GIS Specialist, EOC Coordinator

EPI-Curve of Confirmed Cases and Deaths

2098



COVID-19 Status in Liberia by County April 24, 2021



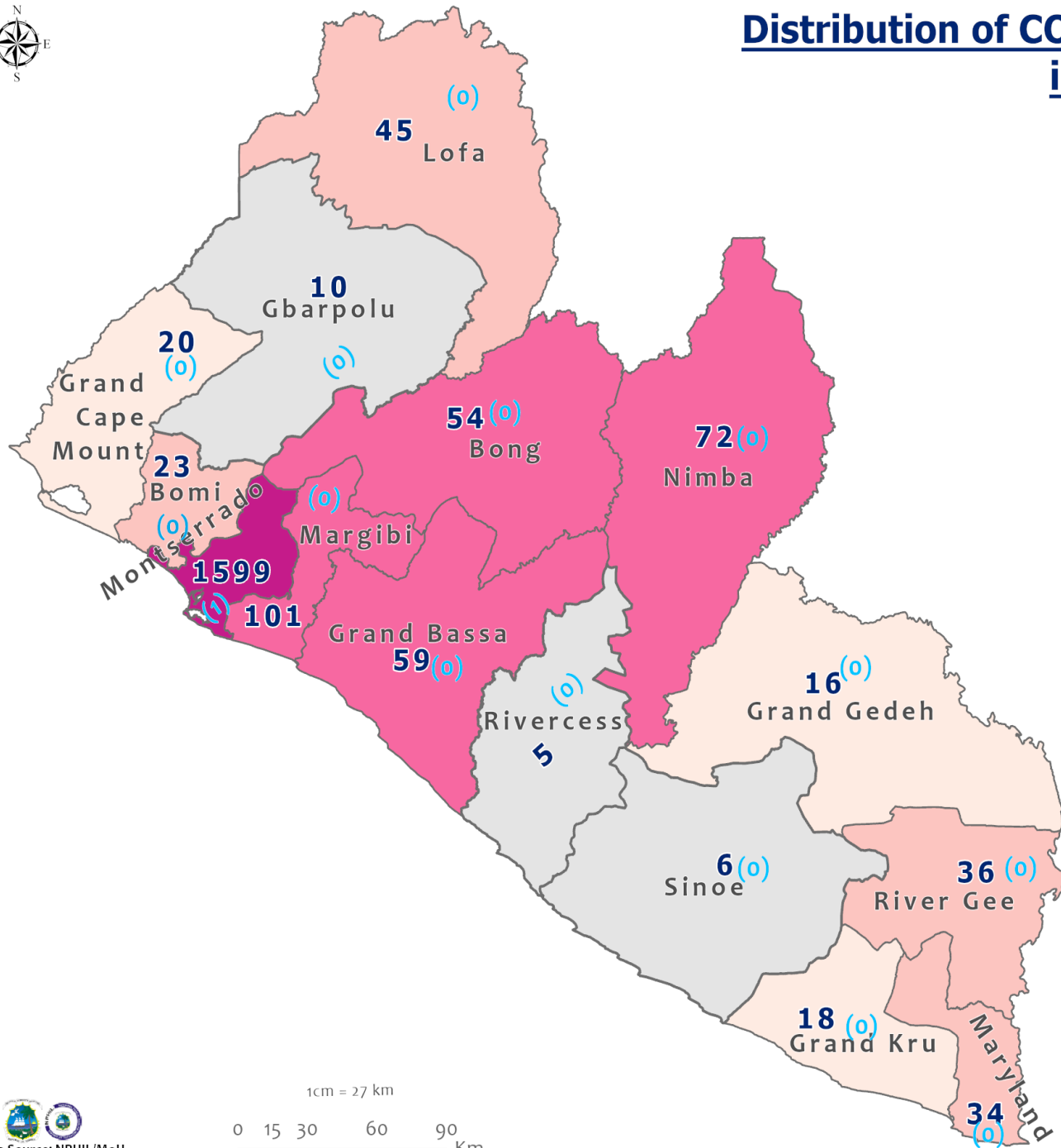
Legend

County Status

- Preparedness
- 28-Day Countdown
- Response



Distribution of COVID-19 Cases by County in Liberia - April 24, 2021



Total cumulative cases:

2098

Total new cases:

1

Legend

Number of Cases

- 0 - 10
- 11 - 20
- 21 - 50
- 51 - 200
- 201 - 2000

Cumulative cases

New cases

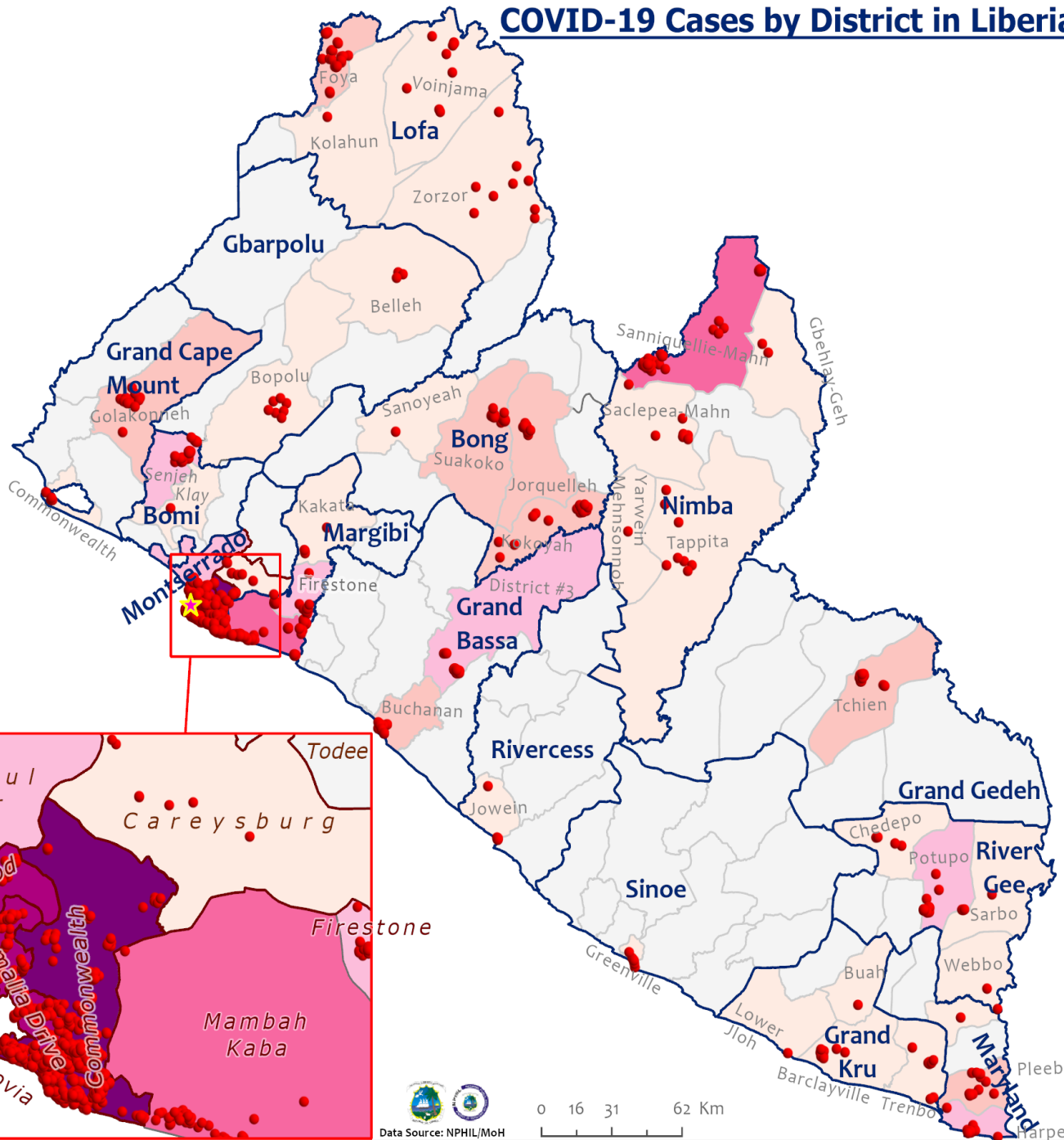
0 (0)

1cm = 27 km

0 15 30 60 90 Km



COVID-19 Cases by District in Liberia - April 24, 2021



Total Cases: 2098

| Affected Counties | Cumulative Cases |
|-------------------|------------------|
| Montserrado | 1599 |
| Margibi | 101 |
| Nimba | 72 |
| Grand Bassa | 59 |
| Bong | 54 |
| Lofa | 45 |
| River Gee | 36 |
| Maryland | 34 |
| Bomi | 23 |
| Grand Cape Mount | 20 |
| Grand Kru | 18 |
| Grand Gedeh | 16 |
| Gbarpolu | 10 |
| Sinoe | 6 |
| Rivercess | 5 |

Legend

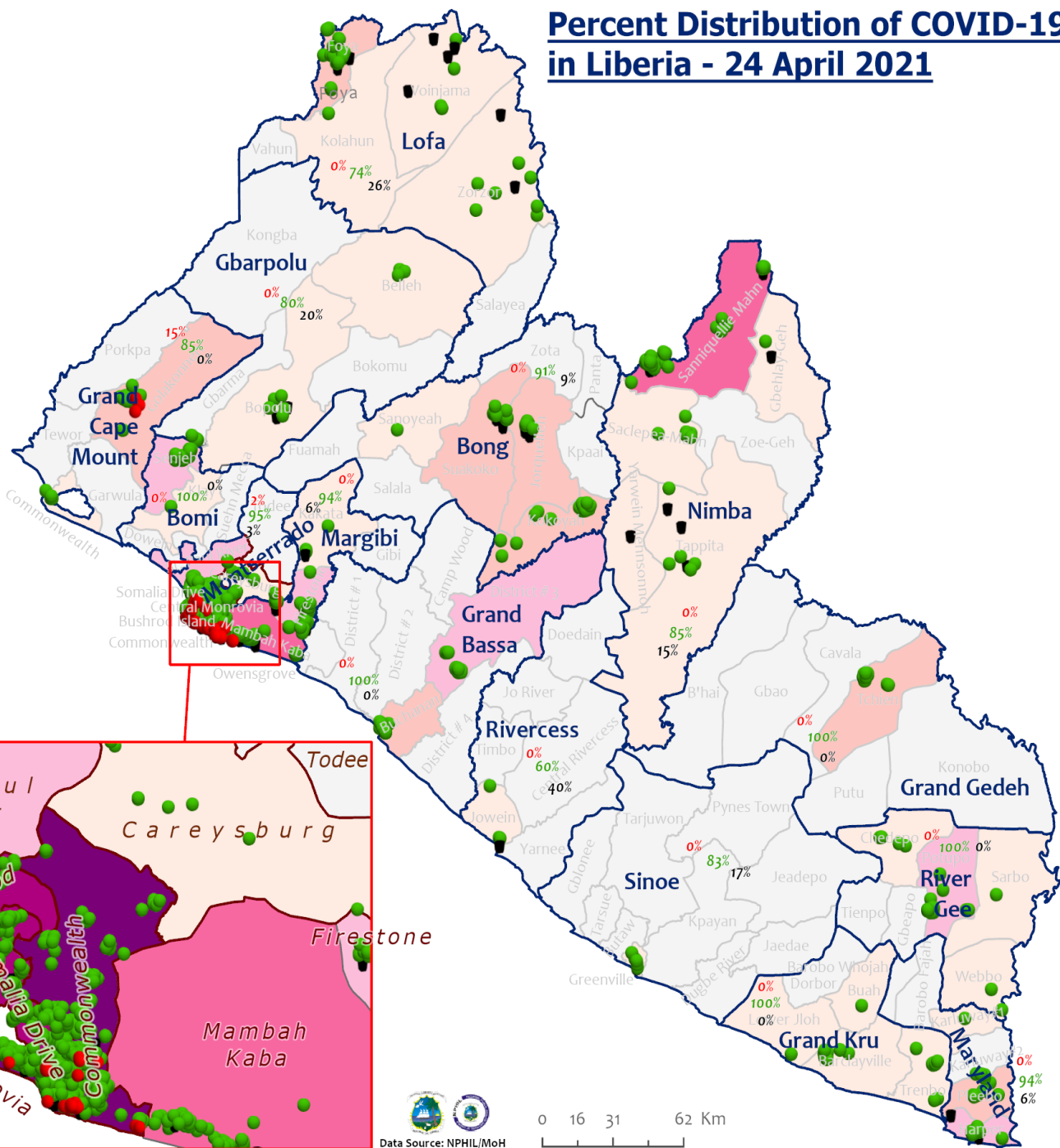
Case Status

- ★ New confirmed case
- Confirmed cases

Cases / District

- 0
- 1-10
- 11-20
- 21-50
- 51-100
- 101-200
- 201-600

Percent Distribution of COVID-19 Cases by Status in Liberia - 24 April 2021



Total Cases: 2098

| Affected Counties | Cumulative Cases |
|-------------------|------------------|
| Montserrado | 1599 |
| Margibi | 101 |
| Nimba | 72 |
| Grand Bassa | 59 |
| Bong | 54 |
| Lofa | 45 |
| River Gee | 36 |
| Maryland | 34 |
| Bomi | 23 |
| Grand Cape Mount | 20 |
| Grand Kru | 18 |
| Grand Gedeh | 16 |
| Gbarpolu | 10 |
| Sinoe | 6 |
| Rivercess | 5 |

Legend

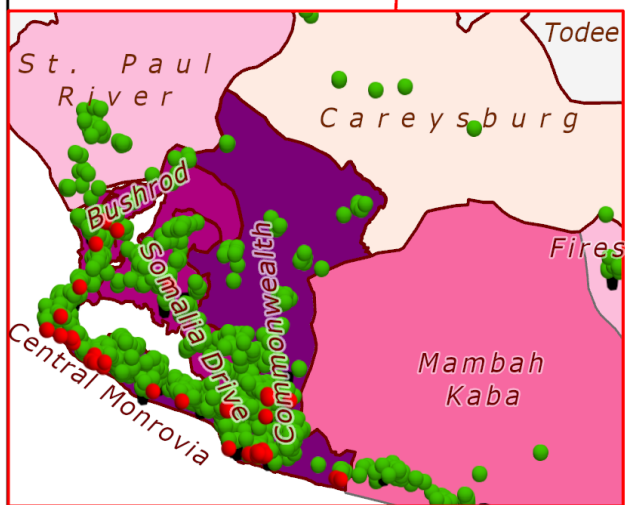
Case Status

- Active
- Recovered
- Dead

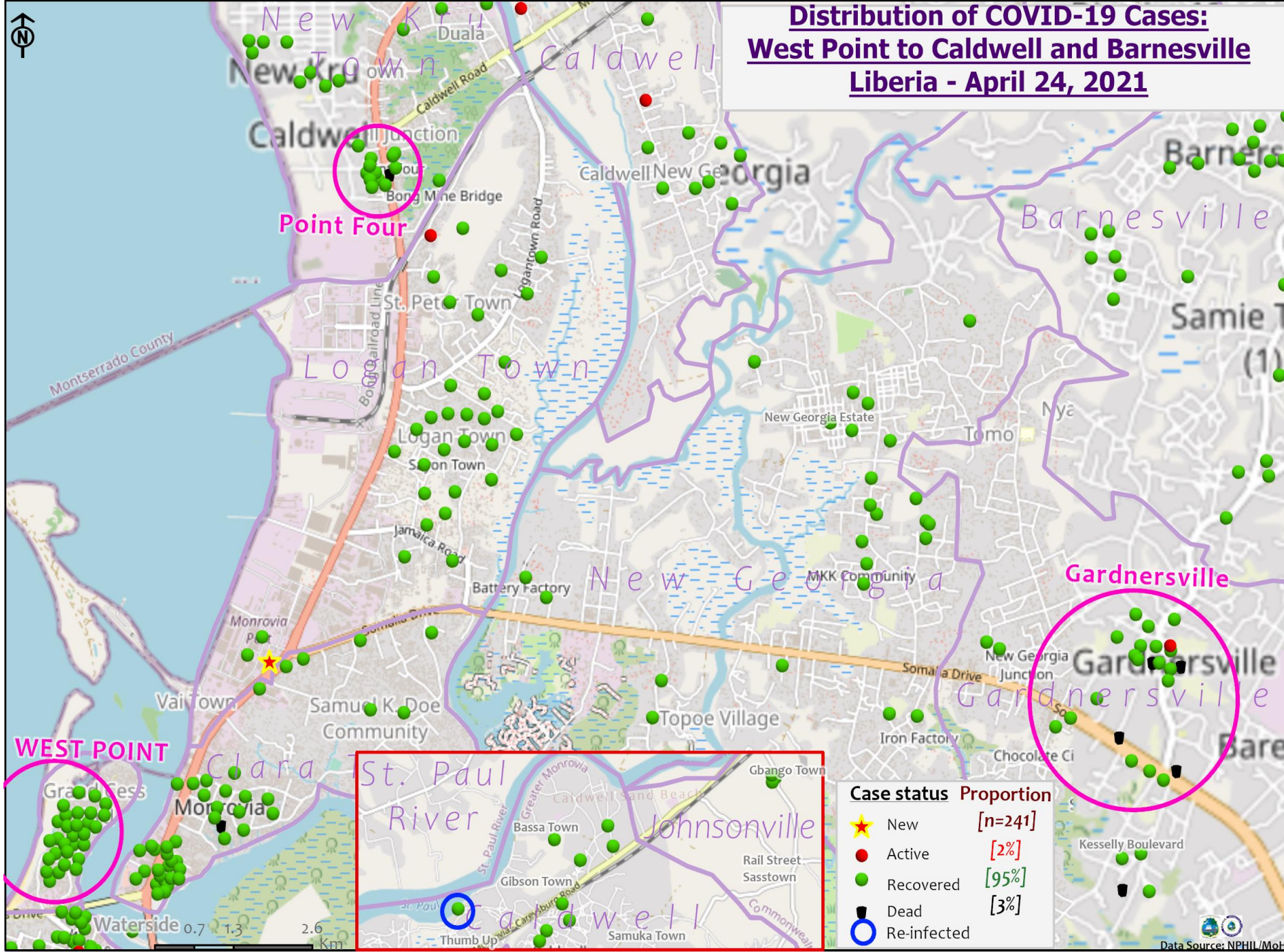
Cases / District

- 0
- 1-10
- 11-20
- 21-50
- 51-100
- 101-200
- 201-600

[2%]
[94%]
[4%]



Distribution of COVID-19 Cases: West Point to Caldwell and Barnesville Liberia - April 24, 2021



| Case status | Proportion |
|---------------|------------|
| ★ New | [n=241] |
| ● Active | [2%] |
| ● Recovered | [95%] |
| ● Dead | [3%] |
| ○ Re-infected | |

Summary of confirmed, recovered, active, and dead cases by reporting counties, Liberia, 16 March 2020 – 24 April 2021

| County | Confirmed Cases | | Recovered Cases | | Active Cases | Dead Cases | |
|------------------|-----------------|-------------|-----------------|-------------|--------------|------------|-----------|
| | New | Cum | New | Cum | | New | Cum |
| Bomi | 0 | 23 | 0 | 22 | 0 | 0 | 1 |
| Bong | 0 | 54 | 0 | 49 | 0 | 0 | 5 |
| Gbarpolu | 0 | 10 | 0 | 8 | 0 | 0 | 2 |
| Grand Bassa | 0 | 59 | 0 | 59 | 0 | 0 | 0 |
| Grand Cape Mount | 0 | 20 | 0 | 17 | 3 | 0 | 0 |
| Grand Gedeh | 0 | 16 | 0 | 16 | 0 | 0 | 0 |
| Grand Kru | 0 | 18 | 0 | 18 | 0 | 0 | 0 |
| Lofa | 0 | 45 | 0 | 34 | 0 | 0 | 11 |
| Margibi | 0 | 101 | 0 | 95 | 0 | 0 | 6 |
| Maryland | 0 | 34 | 0 | 32 | 0 | 0 | 2 |
| Montserrado | 1 | 1599 | 2 | 1487 | 68 | 0 | 44 |
| Nimba | 0 | 72 | 0 | 61 | 0 | 0 | 11 |
| Rivercess | 0 | 5 | 0 | 3 | 0 | 0 | 2 |
| River Gee | 0 | 36 | 0 | 36 | 0 | 0 | 0 |
| Sinoe | 0 | 6 | 0 | 5 | 0 | 0 | 1 |
| National | 1 | 2098 | 2 | 1942 | 71 | 0 | 85 |

Daily Summary Report at Treatment Units – 24 April 2021

| Treatment Facility Name | New Admissions | Cumulative Admission | Daily Discharges | Cumulative Recoveries | Daily Deaths | Cumulative Deaths | Currently in treatment |
|--|----------------|----------------------|------------------|-----------------------|--------------|-------------------|------------------------|
| Bomi LGH Treatment Unit | 0 | 18 | 0 | 18 | 0 | 0 | 0 |
| Bong Treatment Unit | 0 | 26 | 0 | 26 | 0 | 0 | 0 |
| Chief Jallahlone Hospital Treatment Unit | 0 | 1 | 0 | 1 | 0 | 0 | 0 |
| Grand Bassa Arcelor Mittal Treatment Unit | 0 | 6 | 0 | 6 | 0 | 0 | 0 |
| Grand Bassa LGH Treatment Unit | 0 | 3 | 0 | 3 | 0 | 0 | 0 |
| LAC Treatment Unit | 0 | 42 | 0 | 42 | 0 | 0 | 0 |
| Starbase Treatment Unit | 2 | 646 | 0 | 635 | 0 | 9 | 2 |
| Union Treatment Center | 0 | 78 | 0 | 78 | 0 | 0 | 0 |
| Duside Hospital Treatment Unit | 0 | 42 | 0 | 40 | 0 | 2 | 0 |
| Martha Tubman Hospital Treatment Unit | 0 | 13 | 0 | 13 | 0 | 0 | 0 |
| Rally Time Treatment Unit | 0 | 4 | 0 | 4 | 0 | 0 | 0 |
| Sasstown Treatment Unit | 0 | 7 | 0 | 7 | 0 | 0 | 0 |
| Behwan Treatment Unit | 0 | 7 | 0 | 7 | 0 | 0 | 0 |
| FJ Grante Hospital Treatment Unit | 0 | 5 | 0 | 5 | 0 | 0 | 0 |
| JJ Dossen Hospital Treatment Unit | 0 | 9 | 0 | 9 | 0 | 0 | 0 |
| Pleebo Health Center Treatment Unit | 0 | 21 | 0 | 21 | 0 | 0 | 0 |
| Tellewoyan Memorial Hospital Treatment Unit | 0 | 13 | 0 | 13 | 0 | 0 | 0 |
| Foya Borma Hospital Treatment Unit | 0 | 12 | 0 | 12 | 0 | 0 | 0 |
| Zorzor Treatment Unit | 0 | 6 | 0 | 6 | 0 | 0 | 0 |
| Robert Sport Treatment Unit | 0 | 1 | 0 | 1 | 0 | 0 | 0 |
| Ganta United Methodist Hospital Treatment Unit | 0 | 1 | 0 | 1 | 0 | 0 | 0 |
| Arcelor Mittal Yekepa Treatment Unit | 0 | 12 | 0 | 12 | 0 | 0 | 0 |
| Jackson F. Doe Treatment Unit | 0 | 5 | 0 | 4 | 0 | 1 | 0 |
| St. Frances Hospital Treatment Unit | 0 | 2 | 0 | 2 | 0 | 0 | 0 |
| Fish Town Hospital Treatment Unit | 0 | 36 | 0 | 36 | 0 | 0 | 0 |
| E&J Medical Center Treatment Unit | 0 | 20 | 0 | 19 | 0 | 1 | 0 |
| TOTAL | 2 | 1036 | 0 | 1021 | 0 | 13 | 2 |

Home-Base Care of COVID-19 Cases

| County | New Admissions | Currently in Admissions | No. Followed-up (In-person/Phone) | Cumulative Admissions | New Recoveries | Cumulative Recoveries | Referrals to TU | Cumulative Referrals to TU | New Death | Cumulative Deaths |
|------------------|----------------|-------------------------|-----------------------------------|-----------------------|----------------|-----------------------|-----------------|----------------------------|-----------|-------------------|
| Montserrat | 0 | 17 | 14 | 229 | 0 | 210 | 2 | 7 | 0 | 0 |
| Grand Cape Mount | | | | 0 | | | | | | |
| Total: | 0 | 17 | 14 | 229 | 0 | 210 | 2 | 7 | 0 | 0 |

Laboratory Samples Evaluated – 24 April 2021

| County | Sample Evaluated | New Positive | Repeat Positive | Initial Negative | Repeat Test Negative | Pending Lab Result |
|--------------------------|------------------|--------------|-----------------|------------------|----------------------|--------------------|
| Bong | 1 | 0 | 0 | 1 | 0 | 0 |
| Grand Bassa | 3 | 0 | 0 | 3 | 0 | 0 |
| Grand Cape Mount | 1 | 0 | 0 | 1 | 0 | 0 |
| Margibi | 14 | 0 | 0 | 14 | 0 | 0 |
| Montserrado | 260 | 1 | 0 | 255 | 0 | 4 |
| Nimba | 2 | 0 | 0 | 2 | 0 | 0 |
| TOTAL | 281 | 1 | 0 | 276 | 0 | 4 |
| Outgoing Traveler | 154 | 0 | 0 | 150 | 0 | 4 |
| Incoming Traveler | 123 | 1 | 0 | 122 | 0 | 0 |
| Voluntary | 4 | 0 | 0 | 4 | 0 | 0 |
| NRL | 281 | 1 | 0 | 275 | 0 | 4 |
| UN Clinic Lab | 0 | 0 | 0 | 0 | 0 | 0 |

Summary of COVID-19 Contact Tracing in Response Counties

| County | New Contacts Line listed | Cumulative Contacts | No. of Health Care Workers as Contacts | Cumulative no. of Health Care Workers as contacts | Contacts became a case | Cumulative contacts that became a case | Contacts Completed 14 Days | Cumulative Contacts Completing 14 Days | Contacts Under Follow-up | Contacts lost to Follow-up |
|------------------|--------------------------|---------------------|--|---|------------------------|--|----------------------------|--|--------------------------|----------------------------|
| Montserrado | 0 | 5536 | 0 | 508 | 0 | 189 | 0 | 5449 | 7 | 3 |
| Margibi | 0 | 480 | 0 | 125 | 0 | 42 | 0 | 470 | 0 | 0 |
| Grand Bassa | 0 | 457 | 0 | 140 | 0 | 51 | 0 | 410 | 0 | 0 |
| Sinoe | 0 | 191 | 0 | 30 | 0 | 1 | 0 | 191 | 0 | 0 |
| Lofa | 0 | 758 | 0 | 103 | 0 | 34 | 0 | 726 | 0 | 0 |
| Nimba | 0 | 613 | 0 | 53 | 0 | 25 | 0 | 550 | 0 | 0 |
| Bong | 0 | 302 | 0 | 70 | 0 | 28 | 0 | 300 | 0 | 0 |
| Gbarpolu | 0 | 87 | 0 | 13 | 0 | 8 | 0 | 87 | 0 | 0 |
| Grand Cape Mount | 0 | 49 | 0 | 3 | 0 | 4 | 0 | 51 | 4 | 0 |
| RiverGee | 0 | 123 | 0 | 13 | 0 | 30 | 0 | 123 | 0 | 0 |
| Maryland | 0 | 208 | 0 | 28 | 0 | 19 | 0 | 136 | 0 | 0 |
| Bomi | 0 | 180 | 0 | 17 | 0 | 15 | 0 | 177 | 0 | 0 |
| Rivercess | 0 | 102 | 0 | 55 | 0 | 0 | 0 | 88 | 0 | 0 |
| Grand Kru | 0 | 333 | 0 | 131 | 0 | 17 | 0 | 330 | 0 | 0 |
| Grand Gedeh | 0 | 163 | 0 | 49 | 0 | 6 | 0 | 125 | 0 | 0 |
| National | 0 | 9582 | 0 | 1338 | 0 | 469 | 0 | 9213 | 11 | 3 |

Thank you for Listening