



Liberia COVID-19 Daily Sitrep 413 (May 2, 2021)

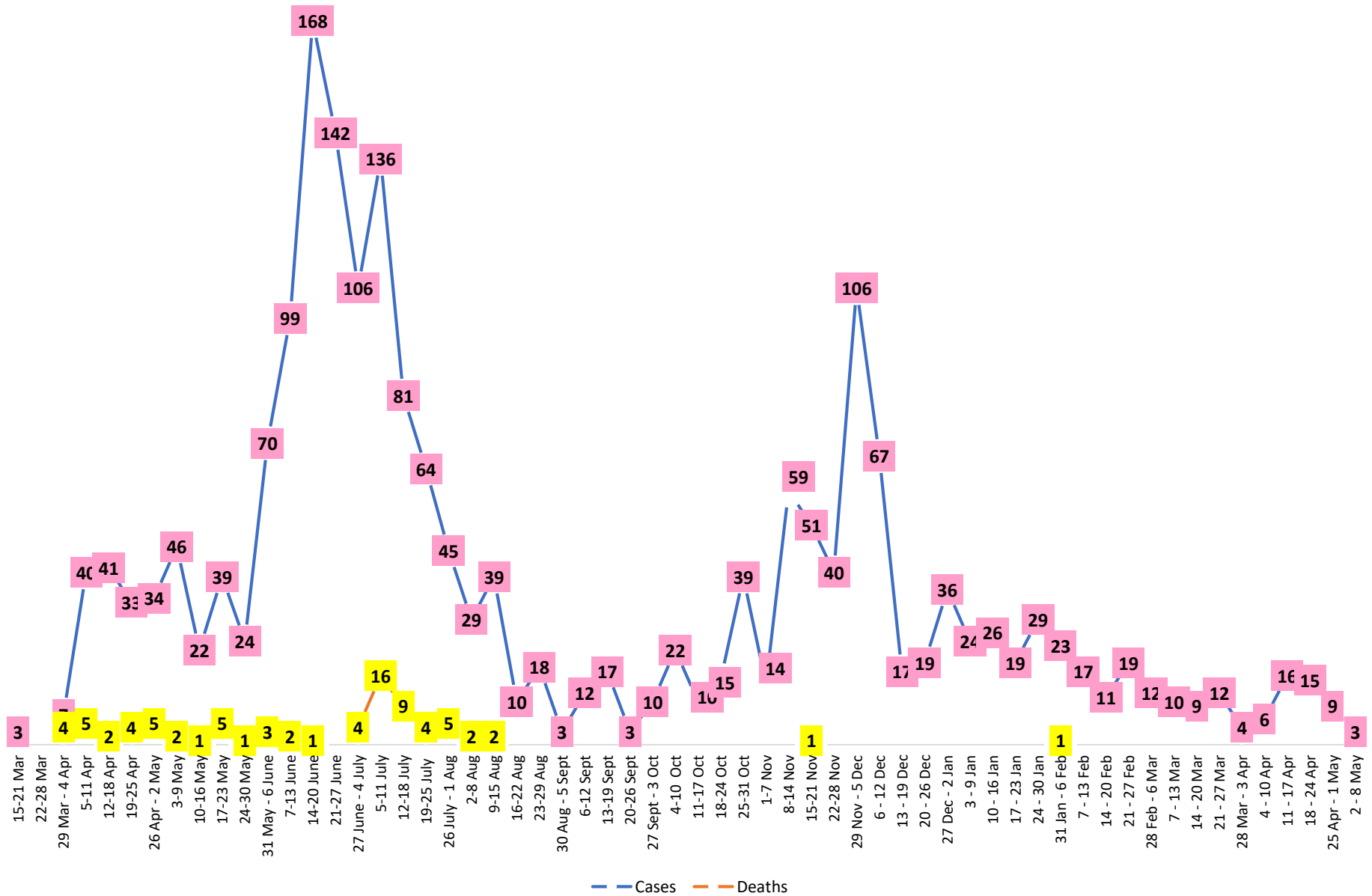
Summary of COVID-19 Cases by Reporting County, Liberia, 16 March 2020 – 2 May 2021

Bong	0	0	54
Gbarpolu	0	0	10
Grand Bassa	0	0	60
Grand Cape Mount	0	0	20
Grand Kru	0	0	18
Grand Gedeh	0	0	16
Lofa	0	0	45
Margibi	0	0	101
Maryland	0	0	34
Montserrado	3	0	1610
Nimba	0	0	72
Rivercess	0	0	5
River Gee	0	0	36
Sinoe	0	0	6
NATIONAL	3	0	2110

Demographic Breakdown (Gender & Age) of Confirmed COVID-19 Cases (16 March 2020 – 2 May 2021)

County	<15 years		15 - 34		35 - 54		55+		All ages		Total Confirmed
	M	F	M	F	M	F	M	F	M	F	
Bomi	2	2	3	5	7	3	0	1	12	11	23
Bong	3	1	4	6	20	9	8	3	35	19	54
Gbarpolu	1	2	0	2	3	1	1	0	5	5	10
Grand Bassa	11	2	9	11	13	8	4	2	37	23	60
Grand Cape Mount	0	0	11	0	8	0	1	0	20	0	20
Grand Kru	0	0	2	5	4	5	2	0	8	10	18
Grand Gedeh	0	1	1	2	7	3	2	0	10	6	16
Lofa	3	3	8	3	13	5	8	2	32	13	45
Margibi	6	4	15	13	28	12	15	8	64	37	101
Maryland	2	0	10	6	9	4	1	2	22	12	34
Montserrado	53	50	377	219	463	197	173	78	1066	544	1610
Nimba	1	4	15	10	28	6	5	3	49	23	72
Rivercess	0	0	2	3	0	0	0	0	2	3	5
River Gee	0	0	4	3	19	5	5	0	28	8	36
Sinoe	0	0	1	0	4	1	0	0	5	1	6
National	82	69	462	288	626	259	225	99	1395	715	2110

COVID-19 WEEKLY EPI-CURVE



Summary of COVID-19 Deaths by Reporting County, Liberia, 16 March 2020 – 2 May 2021

County	Unconfirmed Suspected Deaths	COVID-19 Treatment Unit	Total in COVID-19 Treatment Unit	Health Facility	Total in Health Facility	Community	Total in Community	Confirmed Deaths on Contact List	Cumulative Deaths
Bomi	0	0	0	0	1	0	0	0	1
Bong	0	0	0	0	4	0	1	0	5
Gbarpolu	0	0	0	0	2	0	0	0	2
Grand Bassa	0	0	0	0	0	0	0	0	0
Grand Cape Mount	0	0	0	0	0	0	0	0	0
Grand Gedeh	0	0	0	0	0	0	0	0	0
Grand Kru	0	0	0	0	0	0	0	0	0
Lofa	0	0	0	0	6	0	5	0	11
Maryland	0	0	0	0	2	0	0	0	2
Margibi	0	0	2	0	4	0	0	0	6
Montserrado	0	0	9	0	19	0	16	0	43
Nimba	0	0	2	0	5	0	4	0	11
Rivercess	0	0	0	0	1	0	1	0	2
River Gee	0	0	0	0	0	0	0	0	0
Sinoe	0	0	0	0	1	0	0	0	1
National	0	0	13	0	45	0	27	0	85

The Liberia Case Fatality rate (CFR) officially considered is for deaths that occurred among patients in care at the COVID-19 treatment units across the country. As of 30 December 2020 , a total of 13 deaths have been recorded CFR=1.3%. The country is however keeping active surveillance on community deaths and deaths in non COVID-19 treatment health units.

Daily and Cumulative Healthcare Worker (HCW) COVID-19 Cases and Deaths by County, Liberia, 16 March 2020 – 2 May 2021

County	DAILY REPORT						CUMULATIVE CASES (ALIVE & DEAD)	
	New Suspected & High Risk Cases (Alive)			New Suspect Death	Laboratory Confirmed Cases	Confirmed Cases on Contact List	Confirmed	Deaths
	Suspect	High Risk	Total					
Bomi	0	0	0	0	0	0	5	0
Bong	0	0	0	0	0	0	19	3
Gbarpolu	0	0	0	0	0	0	1	0
Grand Bassa	0	0	0	0	0	0	21	0
Grand Gedeh	0	0	0	0	0	0	2	0
Grand Kru	0	0	0	0	0	0	14	0
Lofa	0	0	0	0	0	0	16	0
Margibi	0	0	0	0	0	0	12	1
Maryland	0	0	0	0	0	0	16	0
Montserrado	0	0	0	0	0	0	88	1
Nimba	0	0	0	0	0	0	14	0
Rivercess	0	0	0	0	0	0	3	0
River Gee	0	0	0	0	0	0	10	0
Sinoe	0	0	0	0	0	0	3	0
NATIONAL	0	0	0	0	0	0	224	5

Cadre Cases and Deaths by Health Care Workers (16 March 2020 – 2 May 2021)

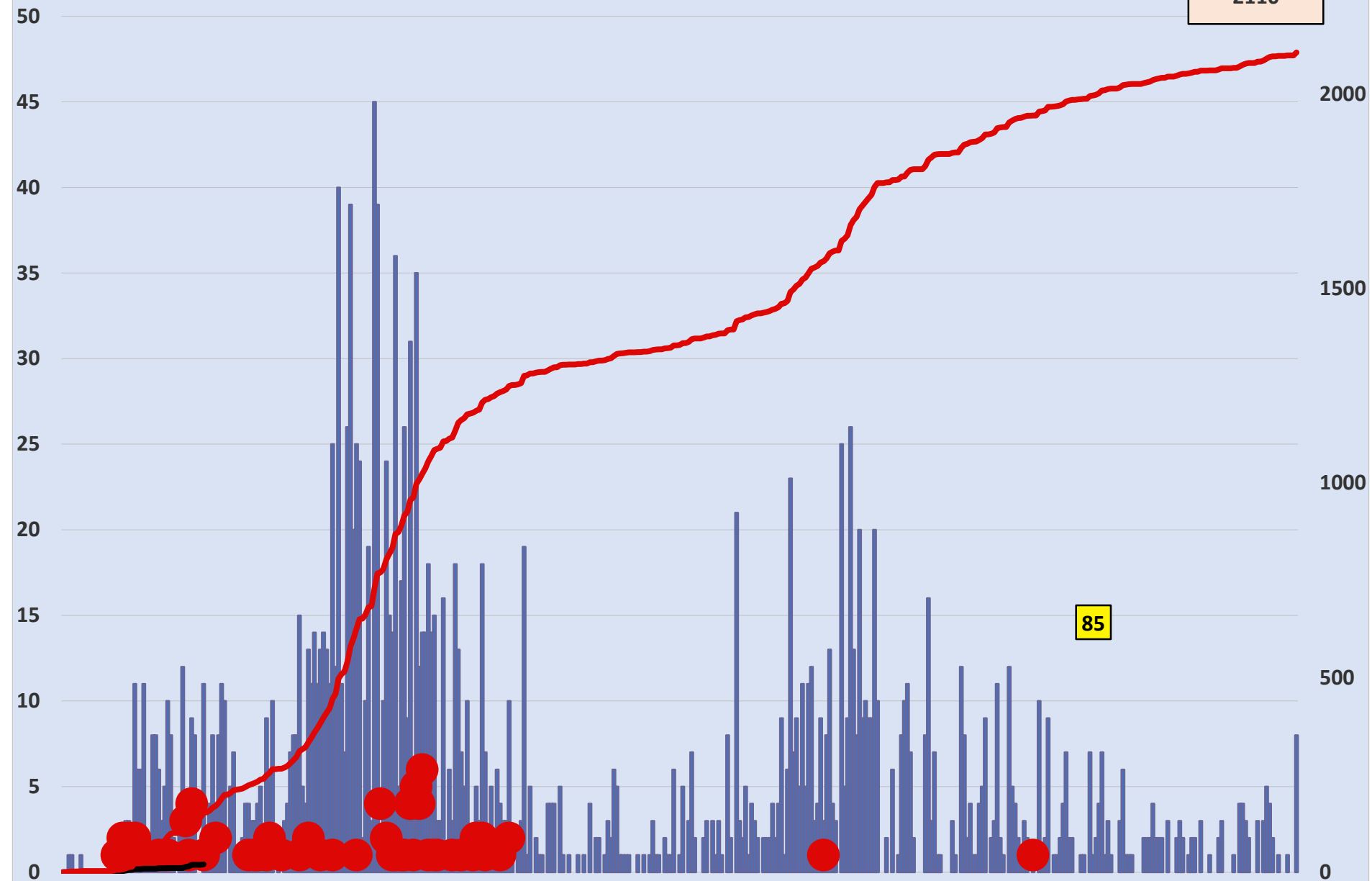
Health Care Worker Cadre	Montserratado		Margibi		Nimba		River Gee		Sinoe		Grand Kru		Gbarpolu		Bong		Lofa		Grand Bassa		Maryland		Bomi		Rivercess		Grand Gedeh		National (Total)	
	Cases	Deaths	Cases	Deaths	Cases	Deaths	Cases	Deaths	Cases	Deaths	Cases	Deaths	Cases	Deaths	Cases	Deaths	Cases	Deaths	Cases	Deaths	Cases	Deaths	Cases	Deaths	Cases	Deaths	Cases	Deaths	Cases	Deaths
Doctors	17	0	1	0	0	0	1	0	0	0	0	0	0	0	1	0	0	0	1	0	0	0	0	0	0	0	0	21	0	
Pharmacists	4	0	0	0	0	0	0	0	0	0	0	0	0	0	0	0	0	0	0	0	0	0	0	0	0	0	4	0		
Nurses	23	1	2	0	2	0	5	0	0	0	2	0	1	1	12	1	8	0	5	0	1	0	1	0	0	0	62	3		
Nurse Aid	0	0	0	0	2	0	0	0	0	0	4	0	0	0	0	0	0	8	0	2	0	0	0	0	0	0	16	0		
Midwife	0	0	0	0	0	0	1	0	0	0	1	0	0	0	1	0	1	0	1	0	0	0	0	0	0	0	5	0		
Physician Assistants	8	0	1	0	1	0	1	0	0	0	1	0	0	0	0	0	1	0	1	0	0	0	0	0	0	0	14	0		
Lab Technician	9	0	1	0	2	0	0	0	1	0	1	0	0	0	0	0	2	0	0	0	10	0	0	3	0	0	29	0		
Environmental Health Technicians	5	0	0	0	0	0	0	0	0	0	0	0	0	0	0	0	0	0	0	0	0	0	0	0	0	0	5	0		
Dieticians	0	0	7	1	0	0	0	0	0	0	0	0	0	0	0	0	0	0	0	0	0	0	0	0	0	0	7	1		
Hospital Cleaner	1	0	0	0	0	0	0	0	0	0	1	0	0	0	1	0	0	0	1	0	2	0	0	0	0	0	6	0		
Others*	21	0	0	0	7	0	2	0	2	0	4	0	0	0	4	1	4	0	4	0	1	0	4	0	2	0	55	1		
Total:	88	1	12	1	14	0	10	0	3	0	14	0	1	1	19	2	16	0	21	0	16	0	5	0	3	0	2	0	224	5

***Others include the following:**

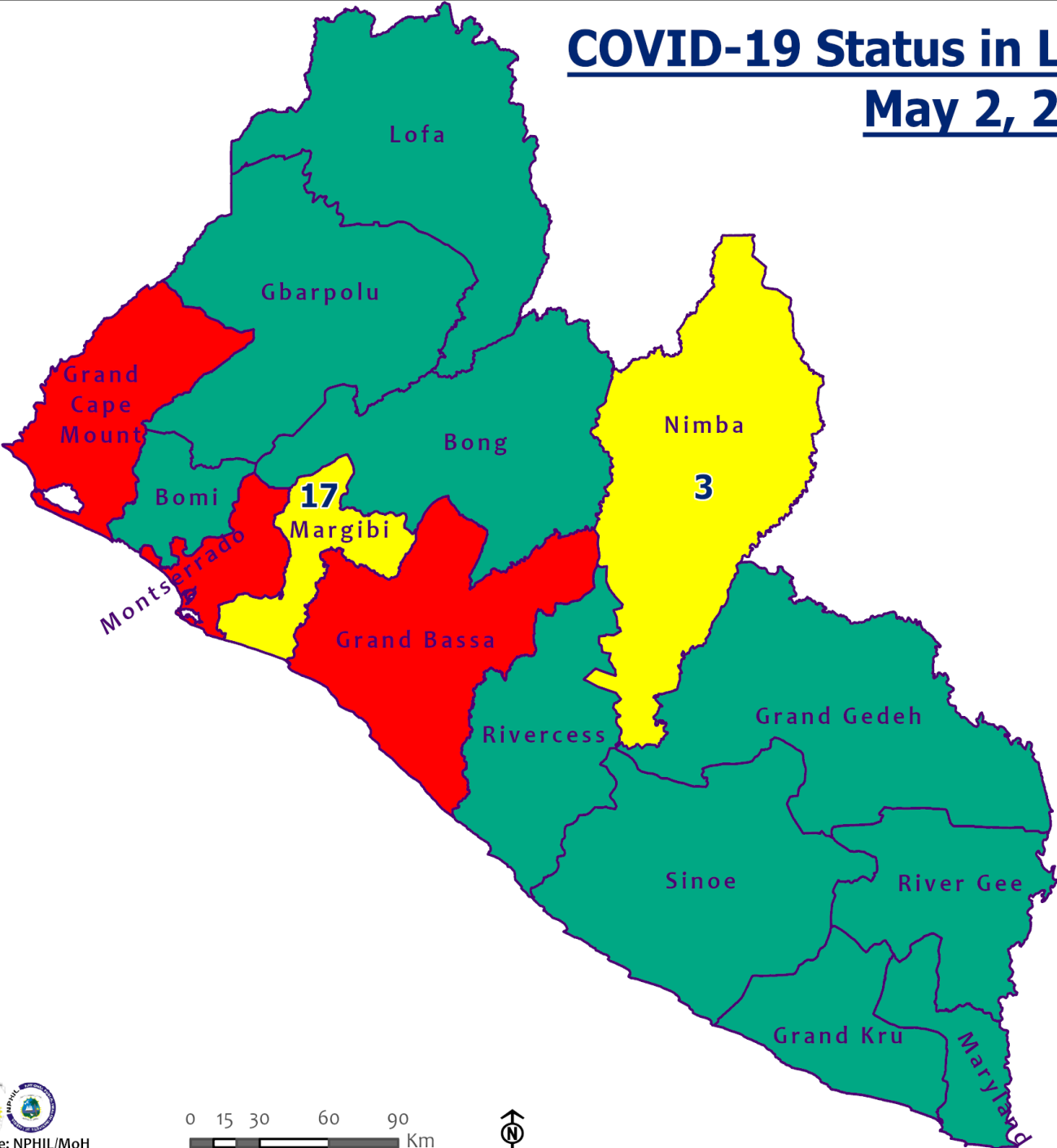
Radiologist, Microbiologist, Epidemiologist, Dispenser, Licensed Practical Nurse, Psychosocial worker, Hygienist, Logistician, Vaccinator, Ambulance Driver, Procurement Officer, Registrar, Accountant, Secretary, Hospital Administrator, Community Health Volunteer, GIS Specialist, EOC Coordinator

EPI-Curve of Confirmed Cases and Deaths

2110



COVID-19 Status in Liberia by County May 2, 2021



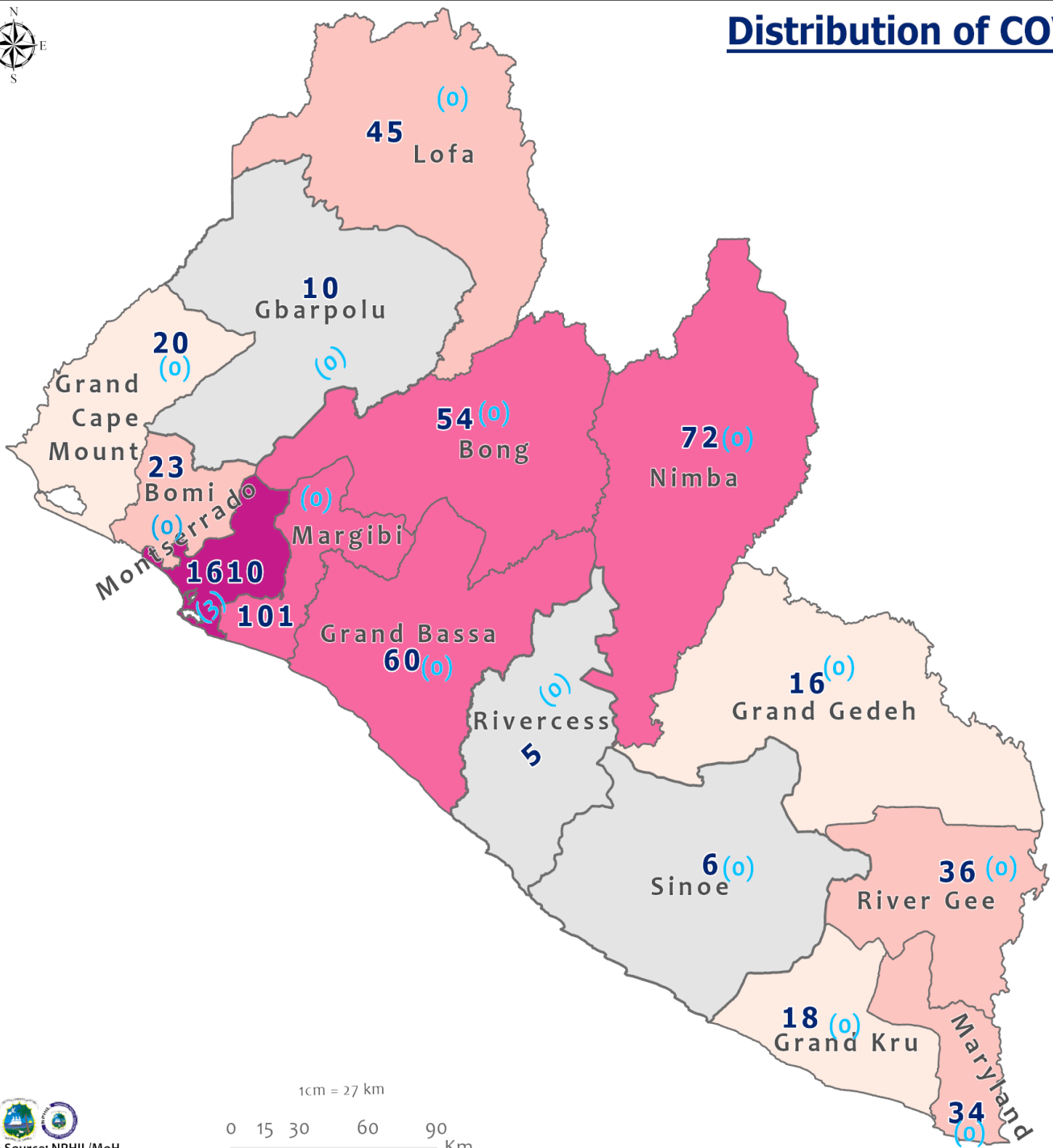
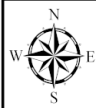
Legend

County Status

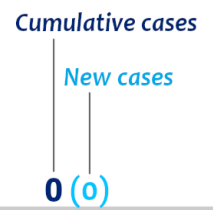
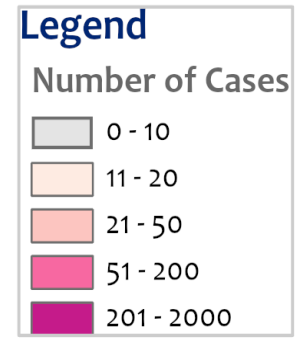
- Preparedness
- 28-Day Countdown
- Response



Distribution of COVID-19 Cases by County in Liberia - May 2, 2021



Total cumulative cases:
2110
 Total new cases:
3

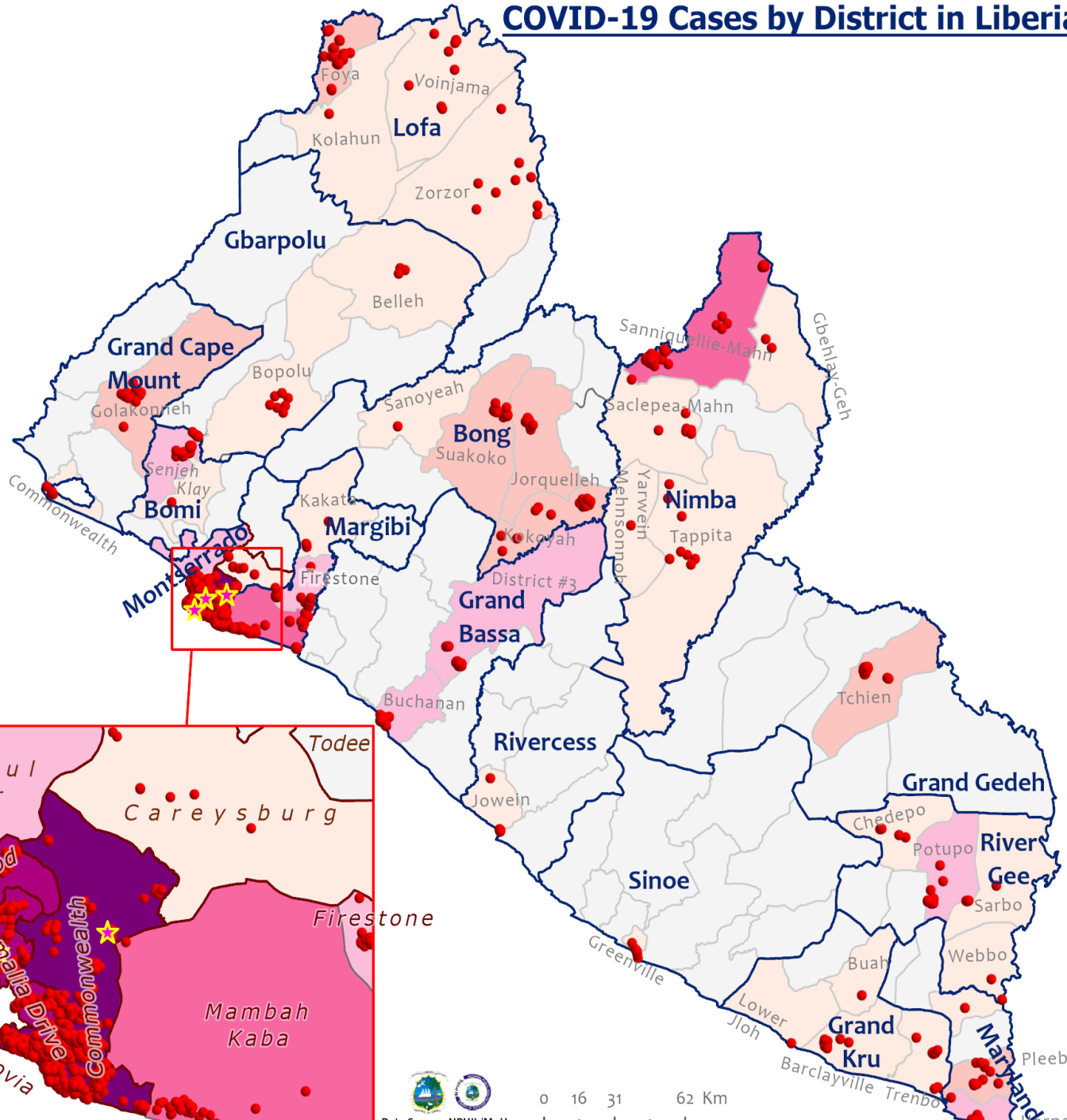


1cm = 27 km





COVID-19 Cases by District in Liberia - May 2, 2021



Total Cases: 2110

Affected Counties	Cumulative Cases
Montserrado	1610
Margibi	101
Nimba	72
Grand Bassa	60
Bong	54
Lofa	45
River Gee	36
Maryland	34
Bomi	23
Grand Cape Mount	20
Grand Kru	18
Grand Gedeh	16
Gbarpolu	10
Sinoe	6
Rivercess	5

Legend

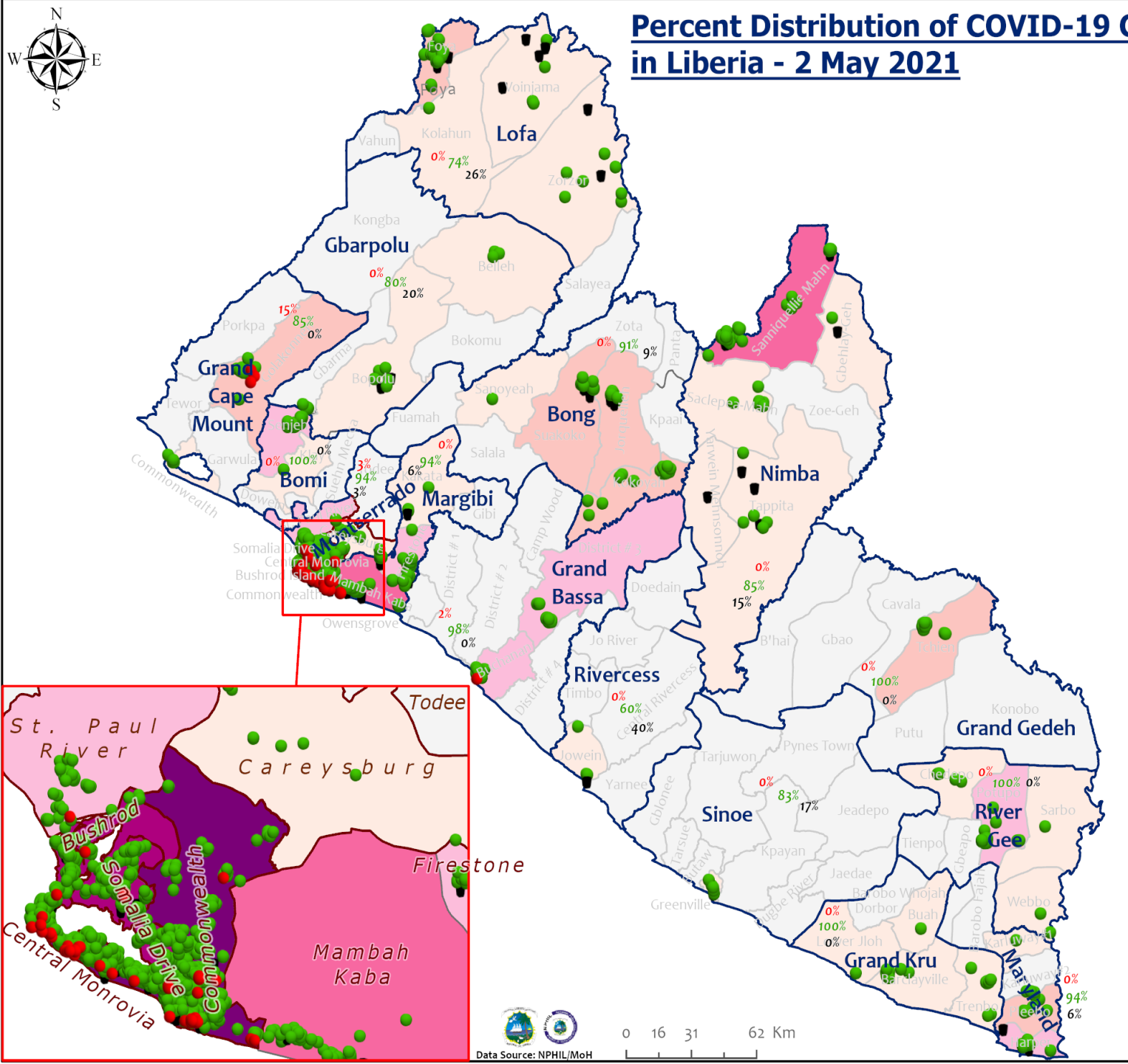
Case Status

- ★ New confirmed case
- Confirmed cases

Cases / District

- 0
- 1-10
- 11-20
- 21-50
- 51-100
- 101-200
- 201-600

Percent Distribution of COVID-19 Cases by Status in Liberia - 2 May 2021



Total Cases: 2110

Affected Counties	Cumulative Cases
Montserrado	1610
Margibi	101
Nimba	72
Grand Bassa	60
Bong	54
Lofa	45
River Gee	36
Maryland	34
Bomi	23
Grand Cape	20
Mount	18
Grand Kru	18
Grand Gedeh	16
Gbarpolu	10
Sinoe	6
Rivercess	5

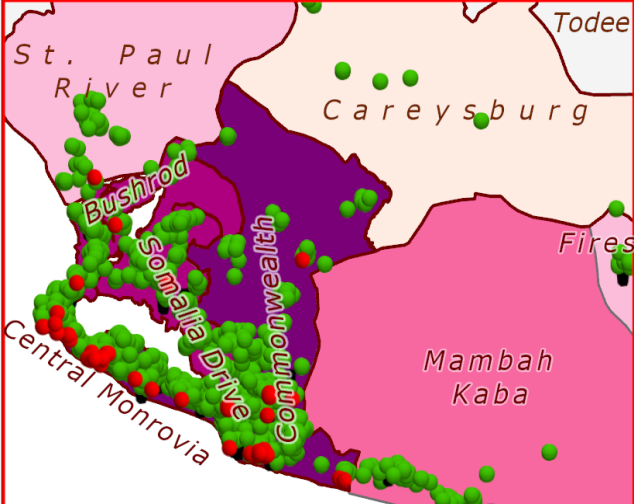
Legend

Case Status

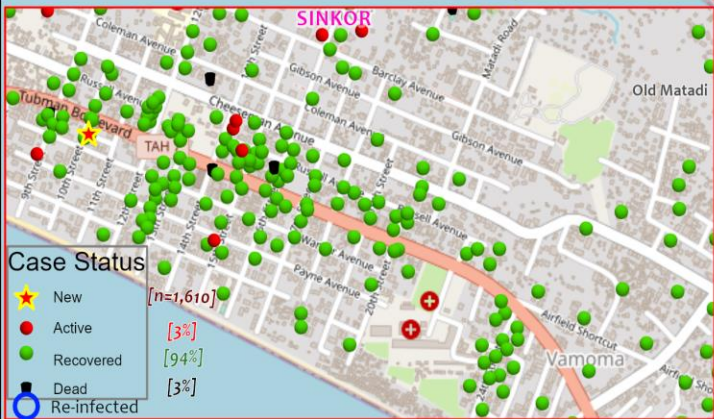
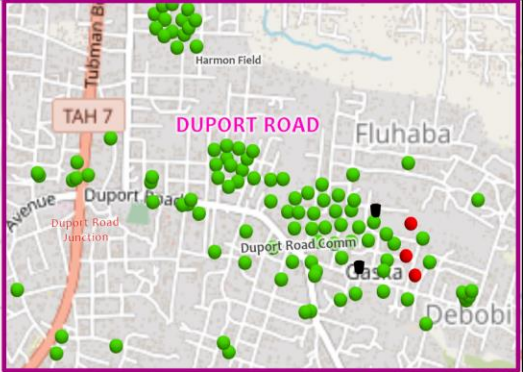
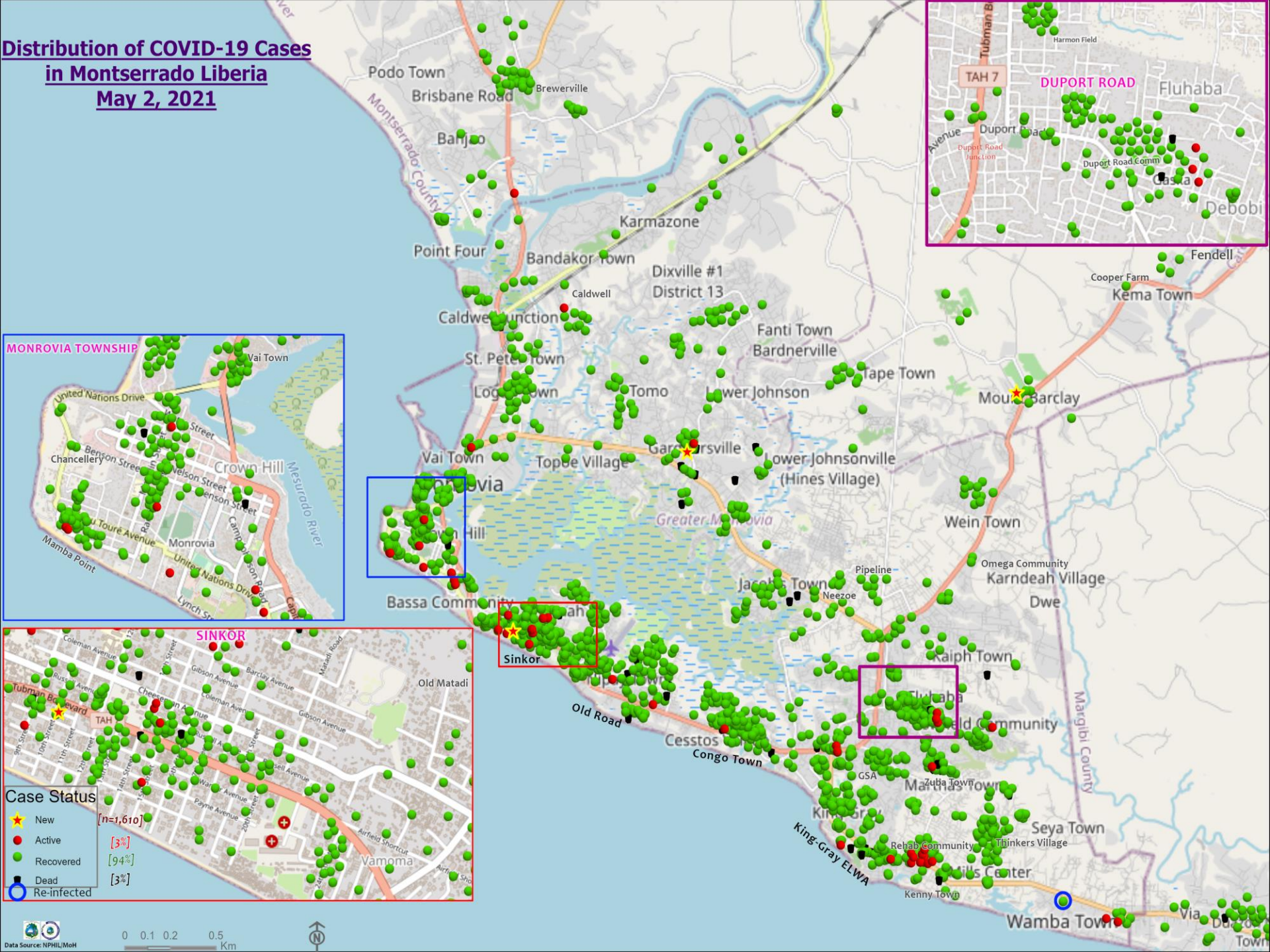
- Active [2%]
- Recovered [94%]
- Dead [4%]

Cases / District

- 0
- 1-10
- 11-20
- 21-50
- 51-100
- 101-200
- 201-600



Distribution of COVID-19 Cases in Montserrato Liberia May 2, 2021



Case Status

★	New	[n=1,610]
●	Active	[3%]
●	Recovered	[94%]
●	Dead	[3%]
○	Re-infected	

Summary of confirmed, recovered, active, and dead cases by reporting counties, Liberia, 16 March 2020 – 2 May 2021

County	Confirmed Cases		Recovered Cases		Active Cases	Dead Cases	
	New	Cum	New	Cum		New	Cum
Bomi	0	23	0	22	0	0	1
Bong	0	54	0	49	0	0	5
Gbarpolu	0	10	0	8	0	0	2
Grand Bassa	0	60	0	59	1	0	0
Grand Cape Mount	0	20	2	19	1	0	0
Grand Gedeh	0	16	0	16	0	0	0
Grand Kru	0	18	0	18	0	0	0
Lofa	0	45	0	34	0	0	11
Margibi	0	101	0	95	0	0	6
Maryland	0	34	0	32	0	0	2
Montserrado	3	1610	0	1495	71	0	44
Nimba	0	72	0	61	0	0	11
Rivercess	0	5	0	3	0	0	2
River Gee	0	36	0	36	0	0	0
Sinoe	0	6	0	5	0	0	1
National	3	2110	2	1952	73	0	85

Daily Summary Report at Treatment Units – 2 May 2021

Treatment Facility Name	New Admissions	Cumulative Admission	Daily Discharges	Cumulative Recoveries	Daily Deaths	Cumulative Deaths	Currently in treatment
Bomi LGH Treatment Unit	0	18	0	18	0	0	0
Bong Treatment Unit	0	26	0	26	0	0	0
Chief Jallahlone Hospital Treatment Unit	0	1	0	1	0	0	0
Grand Bassa Arcelor Mittal Treatment Unit	0	6	0	6	0	0	0
Grand Bassa LGH Treatment Unit	0	3	0	3	0	0	0
LAC Treatment Unit	0	42	0	42	0	0	0
Starbase Treatment Unit	0	646	0	635	0	9	2
Union Treatment Center	0	78	0	78	0	0	0
Duside Hospital Treatment Unit	0	42	0	40	0	2	0
Martha Tubman Hospital Treatment Unit	0	13	0	13	0	0	0
Rally Time Treatment Unit	0	4	0	4	0	0	0
Sasstown Treatment Unit	0	7	0	7	0	0	0
Behwan Treatment Unit	0	7	0	7	0	0	0
FJ Grante Hospital Treatment Unit	0	5	0	5	0	0	0
JJ Dossen Hospital Treatment Unit	0	9	0	9	0	0	0
Pleebo Health Center Treatment Unit	0	21	0	21	0	0	0
Tellewoyan Memorial Hospital Treatment Unit	0	13	0	13	0	0	0
Foya Borma Hospital Treatment Unit	0	12	0	12	0	0	0
Zorzor Treatment Unit	0	6	0	6	0	0	0
Robert Sport Treatment Unit	0	1	0	1	0	0	0
Ganta United Methodist Hospital Treatment Unit	0	1	0	1	0	0	0
Arcelor Mittal Yekepa Treatment Unit	0	12	0	12	0	0	0
Jackson F. Doe Treatment Unit	0	5	0	4	0	1	0
St. Frances Hospital Treatment Unit	0	2	0	2	0	0	0
Fish Town Hospital Treatment Unit	0	36	0	36	0	0	0
E&J Medical Center Treatment Unit	0	20	0	19	0	1	0
TOTAL	0	1036	0	1021	0	13	2

Home-Base Care of COVID-19 Cases

County	New Admissions	Currently in Admissions	No. Followed-up (In-person/Phone)	Cumulative Admissions	New Recoveries	Cumulative Recoveries	Referrals to TU	Cumulative Referrals to TU	New Death	Cumulative Deaths
Montserrado	0	11	11	231	0	217	0	7	0	0
Grand Cape Mount				0						
Total:	0	11	11	231	0	217	0	7	0	0

Laboratory Samples Evaluated – 2 May 2021

County	Sample Evaluated	New Positive	Repeat Positive	Initial Negative	Repeat Test Negative	Pending Lab Result
Bomi	1	0	0	0	0	1
Bong	4	0	0	4	0	0
Gbarpolu	1	0	0	0	0	1
Grand Bassa	3	0	0	2	0	1
Grand Cape Mount	1	0	0	1	0	1
Margibi	11	0	0	11	0	0
Montserrado	202	3	0	182	0	17
Nimba	4	0	0	3	0	1
TOTAL	227	3	0	203	0	21
Outgoing Traveler	158	0	0	142	0	16
Incoming Traveler	64	3	0	56	0	5
Voluntary	5	0	0	5	0	0
NRL	227	3	0	203	0	21
UN Clinic Lab	0	0	0	0	0	0

Incoming Travelers Testing Positive for COVID-19 (April 1 – 30, 2021)

Country of embarkment	Cases
United States of America	3
Lebanon	3
Ghana	2
India	2
Pakistan	2
Nepal	1
Nigeria	1
Kenya	1
Australia	1
N/A	1
Grand Total	17

April Positive Arrivals Analysis

Flight

Flight	Count of No
Air France	7
ASKY	4
Kenya Airways	4
SN Brussels	1
N/A	1
Grand Total	17

Incoming Travelers Testing Positive for COVID-19 (April 1 – 30, 2021)

Nationality	Cases
American	4
Indian	2
Liberian	2
Pakistani	2
Canadian	2
Nepalese	1
Nigerian	1
Australian	1
Lebanese	1
N/A	1
Grand Total	17

Summary of COVID-19 Daily PoE in Response Counties (2 May 2021)

Date of travel	Type of PoE	Point of Entry Name	Type of conveyance	# of Travelers Arrival	# of Travelers departure	# of travelers with elevated temp	Total Travelers screened		Total Passengers tested on Arrival	Total Foreign diplomat Exempted	# of Children under 5 years not tested	Passengers staying less than 5 days exempted	Total passengers in transit	Total passports collected	Total # of Travelers	
							Male	Female								
28-Apr	Airport		Air Morac	0	0	0	0	0	0	0	0	0	0	0	0	
			Brussels	58	86	0	54	90	56	2	5	0	0	0	0	144
			AWA	15	20	0	23	12	15	0	0	0	0	0	0	35
			Air France	31	37	0	42	26	29	2	2	0	0	0	0	68
			Air Cote D'Ivoire	0	0	0	0	0	0	0	0	0	0	0	0	0
			DHL	0	0	0	0	0	0	0	0	0	0	0	0	0
			Kenya	0	0	0	0	0	0	0	0	0	0	0	0	0
			Asky	0	94	0	68	26	0	7	4	0	0	0	1	94
			Others (Special flight)	0	0	0	0	0	0	0	0	0	0	0	0	0
	James Spriggs Payne Airport	Flight	0	0	0	0	0	0	0	0	0	0	0	0	0	
	Land	Ganta Main	Land	43	28	0	30	41	0	0	0	0	0	0	0	71
		Yekepa	Land	22	9	0	11	20	0	0	0	0	0	0	0	31
		Loguatu	Land	6	2	0	6	2	0	0	0	0	0	0	0	8
Bo Water Side		Land	41	61	0	31	71	0	0	0	0	0	0	0	102	
Seaport	Buchanan	Vessel	0	0	0	0	0	0	0	0	0	0	0	0		
	Freeport of Monrovia	Vessel	0	0	0	0	0	0	0	0	0	0	0	0		
Total:				216	337	0	265	288	100	11	11	0	0	0	553	

Summary of COVID-19 Contact Tracing in Response Counties

County	New Contacts Line listed	Cumulative Contacts	No. of Health Care Workers as Contacts	Cumulative no. of Health Care Workers as contacts	Contacts became a case	Cumulative contacts that became a case	Contacts Completed 14 Days	Cumulative Contacts Completing 14 Days	Contacts Under Follow-up	Contacts lost to Follow-up
Montserratado	0	5553	0	508	0	189	0	5459	22	3
Margibi	0	480	0	125	0	42	0	470	0	0
Grand Bassa	0	457	0	140	0	51	0	410	0	0
Sinoe	0	191	0	30	0	1	0	191	0	0
Lofa	0	758	0	103	0	34	0	726	0	0
Nimba	0	613	0	53	0	25	0	550	0	0
Bong	0	302	0	70	0	28	0	300	0	0
Gbarpolu	0	87	0	13	0	8	0	87	0	0
Grand Cape Mount	0	49	0	3	0	4	0	51	4	0
RiverGee	0	123	0	13	0	30	0	123	0	0
Maryland	0	208	0	28	0	19	0	136	0	0
Bomi	0	180	0	17	0	15	0	177	0	0
Rivercess	0	102	0	55	0	0	0	88	0	0
Grand Kru	0	333	0	131	0	17	0	330	0	0
Grand Gedeh	0	163	0	49	0	6	0	125	0	0
National	0	9599	0	1338	0	469	0	9223	26	3

Thank you for Listening