



Liberia COVID-19 Daily Sitrep 464 (June 22, 2021)

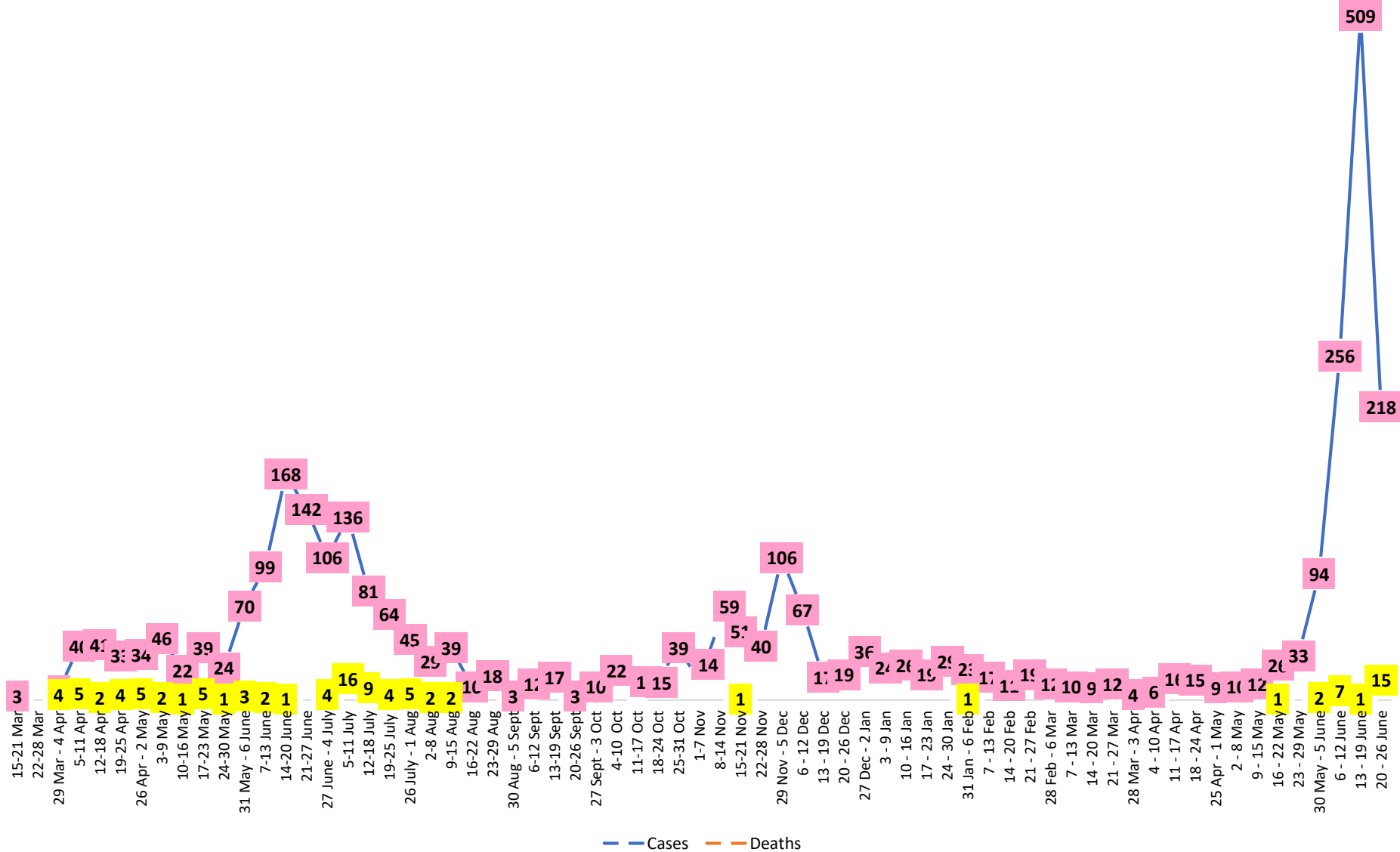
Summary of COVID-19 Cases by Reporting County, Liberia, 16 March 2020 – 22 June 2021

County	Laboratory Confirmed Cases	Confirmed Cases on Contact List	Confirmed Cumulative Cases
Bomi	0	0	32
Bong	0	0	63
Gbarpolu	11	0	25
Grand Bassa	14	0	79
Grand Cape Mount	0	0	29
Grand Kru	0	0	18
Grand Gedeh	0	0	16
Lofa	1	0	59
Margibi	2	0	144
Maryland	0	0	37
Montserrado	89	0	2637
Nimba	1	0	76
Rivercess	1	0	8
River Gee	0	0	36
Sinoe	0	0	6
NATIONAL	119	0	3265

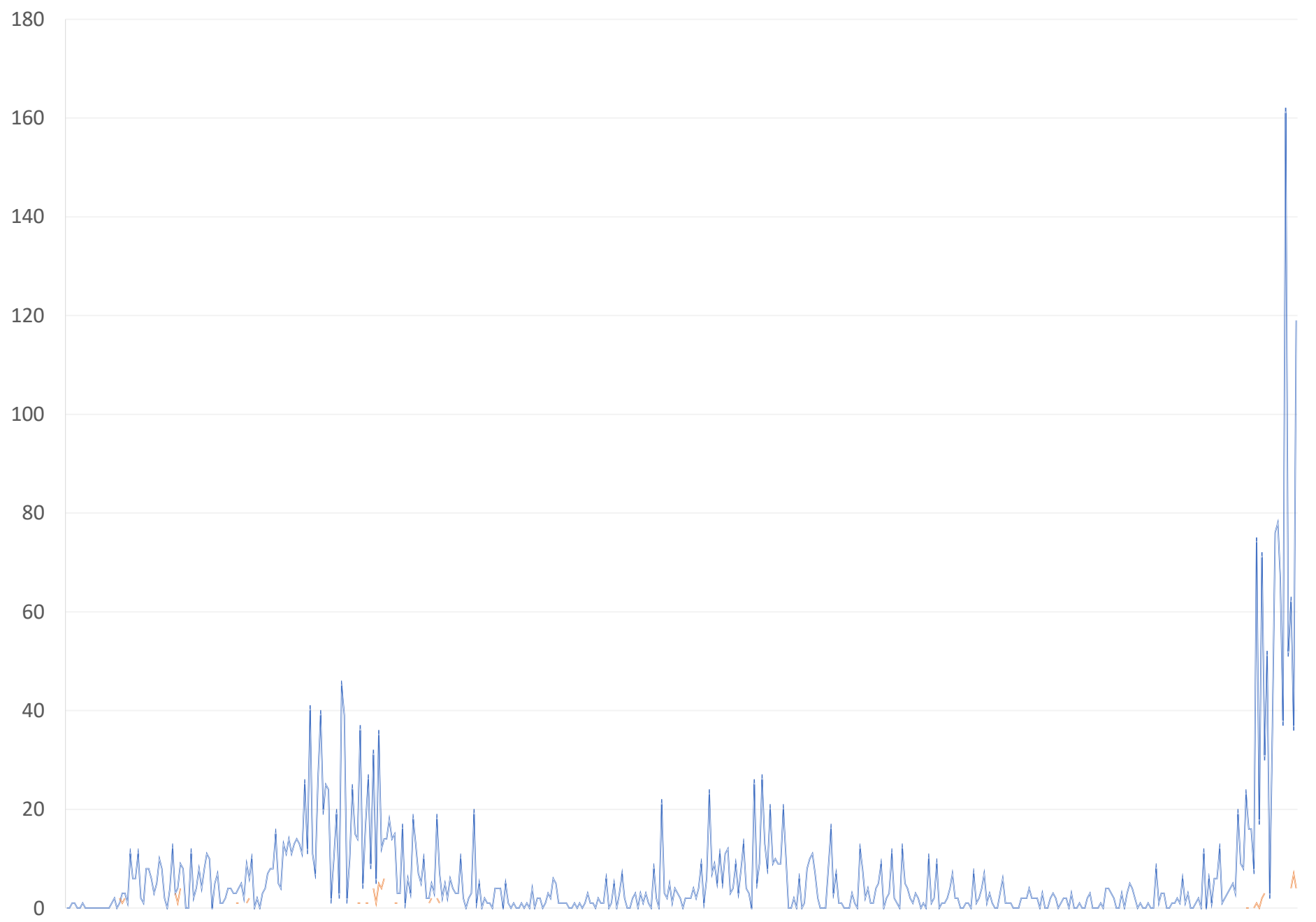
Demographic Breakdown (Gender & Age) of Confirmed COVID-19 Cases (16 March 2020 – 22 June 2021)

County	<15 years		15 - 34		35 - 54		55+		All ages		Total Confirmed
	M	F	M	F	M	F	M	F	M	F	
Bomi	2	2	6	5	9	6	1	1	18	14	32
Bong	3	1	7	6	23	10	10	3	43	20	63
Gbarpolu	1	2	5	4	8	3	2	0	16	9	25
Grand Bassa	14	4	13	13	18	9	5	3	50	29	79
Grand Cape Mount	0	0	13	0	14	0	2	0	29	0	29
Grand Kru	0	0	2	5	4	5	2	0	8	10	18
Grand Gedeh	0	1	1	2	7	3	2	0	10	6	16
Lofa	6	4	8	8	16	6	8	3	38	21	59
Margibi	7	5	20	16	42	19	23	12	92	52	144
Maryland	2	0	10	6	10	5	2	2	24	13	37
Montserrado	68	69	532	362	762	356	309	179	1671	966	2637
Nimba	1	4	15	11	30	6	5	4	51	25	76
Rivercess	0	0	2	3	2	0	1	0	5	3	8
River Gee	0	0	4	3	19	5	5	0	28	8	36
Sinoe	0	0	1	0	4	1	0	0	5	1	6
National	104	92	639	444	968	434	377	207	2088	1177	3265

COVID-19 WEEKLY EPI-CURVE



Daily Cases Daily Deaths



Summary of COVID-19 Deaths by Reporting County, Liberia, 16 March 2020 – 22 June 2021

County	ew Suspected Deaths	COVID-19 Treatment Unit	Total in COVID-19 Treatment Unit	Health Facility	Total in Health Facility	Community	Total in Community	Confirmed Deaths on Contact List	Cumulative Deaths
Bomi	0	0	0	0	1	0	0	0	1
Bong	0	0	0	3	7	0	1	0	8
Gbarpolu	0	0	0	0	2	0	0	0	2
Grand Bassa	0	0	0	0	0	0	0	0	0
Grand Cape Mount	0	0	0	0	0	0	0	0	0
Grand Gedeh	0	0	0	0	0	0	0	0	0
Grand Kru	0	0	0	0	0	0	0	0	0
Lofa	0	0	0	0	6	0	5	0	11
Maryland	0	0	0	0	2	0	0	0	2
Margibi	0	0	2	0	5	0	0	0	7
Montserrado	0	4	17	4	32	0	16	0	65
Nimba	0	0	2	0	5	0	4	0	11
Rivercess	0	0	0	0	1	0	1	0	2
River Gee	0	0	0	0	0	0	0	0	0
Sinoe	0	0	0	0	1	0	0	0	1
National	0	4	21	7	62	0	27	0	110

Daily and Cumulative Healthcare Worker (HCW) COVID-19 Cases and Deaths by County, Liberia, 16 March 2020 – 22 June 2021

County	DAILY REPORT						CUMULATIVE CASES (ALIVE & DEAD)	
	New Suspected & High Risk Cases (Alive)			New Suspect Death	Laboratory Confirmed Cases	Confirmed Cases on Contact List	Confirmed	Deaths
	Suspect	High Risk	Total					
Bomi	0	0	0	0	0	0	8	0
Bong	0	0	0	0	0	0	21	4
Gbarpolu	0	0	0	0	0	0	1	0
Grand Bassa	0	0	0	0	0	0	21	0
Grand Gedeh	0	0	0	0	0	0	2	0
Grand Kru	0	0	0	0	0	0	14	0
Lofa	0	0	0	0	0	0	17	0
Margibi	0	0	0	0	0	0	12	1
Maryland	0	0	0	0	0	0	16	0
Montserrado	0	0	0	0	0	0	88	1
Nimba	0	0	0	0	0	0	15	0
Rivercess	0	0	0	0	0	0	3	0
River Gee	0	0	0	0	0	0	10	0
Sinoe	0	0	0	0	0	0	3	0
NATIONAL	0	0	0	0	0	0	231	6

Cadre Cases and Deaths by Health Care Workers (16 March 2020 – 22 June 2021)

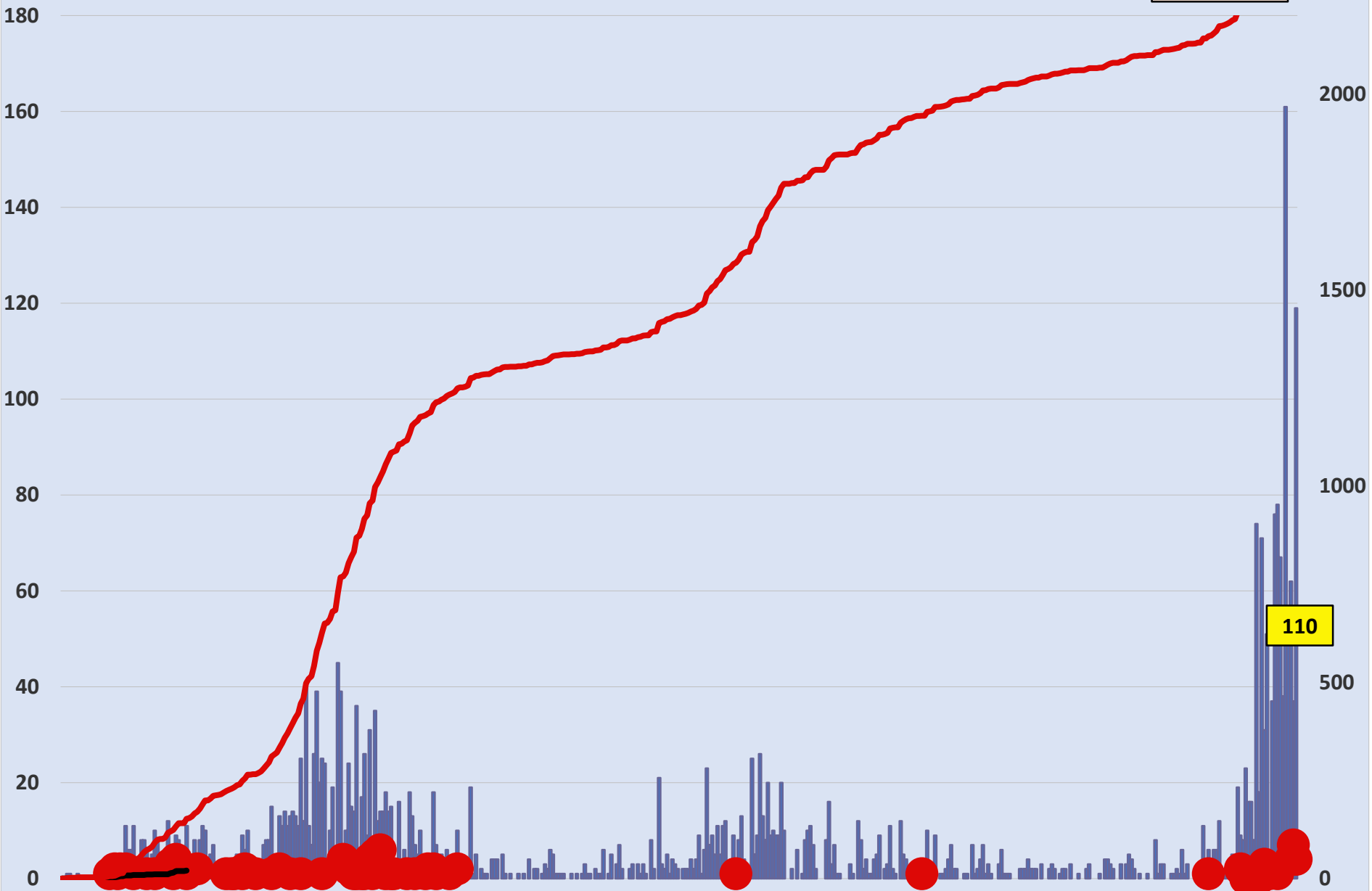
Health Care Worker Cadre	Montserratado		Margibi		Nimba		River Gee		Sinoe		Grand Kru		Gbarpolu		Bong		Lofa		Grand Bassa		Maryland		Bomi		Rivercess		Grand Gedeh		National (Total)	
	Cases	Deaths	Cases	Deaths	Cases	Deaths	Cases	Deaths	Cases	Deaths	Cases	Deaths	Cases	Deaths	Cases	Deaths	Cases	Deaths	Cases	Deaths	Cases	Deaths	Cases	Deaths	Cases	Deaths	Cases	Deaths		
Doctors	17	0	1	0	0	0	1	0	0	0	0	0	0	0	1	0	0	0	1	0	0	0	0	0	0	0	0	21	0	
Pharmacists	4	0	0	0	0	0	0	0	0	0	0	0	0	0	0	0	0	0	0	0	0	0	0	0	0	0	0	4	0	
Nurses	23	1	2	0	2	0	5	0	0	0	2	0	1	1	12	1	8	0	5	0	1	0	1	0	0	0	0	62	3	
Nurse Aid	0	0	0	0	2	0	0	0	0	0	4	0	0	0	0	0	0	0	8	0	2	0	0	0	0	0	0	16	0	
Midwife	0	0	0	0	0	0	1	0	0	0	1	0	0	0	1	0	1	0	1	0	0	0	0	0	0	0	0	5	0	
Physician Assistants	8	0	1	0	1	0	1	0	0	0	1	0	0	0	0	0	1	0	1	0	0	0	0	0	0	0	0	14	0	
Lab Technician	9	0	1	0	2	0	0	0	1	0	1	0	0	0	0	0	2	0	0	0	10	0	0	0	3	0	0	29	0	
Environmental Health Technicians	5	0	0	0	0	0	0	0	0	0	0	0	0	0	0	0	0	0	0	0	0	0	0	0	0	0	0	5	0	
Dieticians	0	0	7	1	0	0	0	0	0	0	0	0	0	0	0	0	0	0	0	0	0	0	0	0	0	0	0	7	1	
Hospital Cleaner	1	0	0	0	0	0	0	0	0	0	1	0	0	0	1	0	0	0	1	0	2	0	0	0	0	0	0	6	0	
Others*	21	0	0	0	7	0	2	0	2	0	4	0	0	0	4	1	5	0	4	0	1	0	5	0	0	2	0	57	1	
Total:	88	1	12	1	14	0	10	0	3	0	14	0	1	1	19	2	17	0	21	0	16	0	6	0	3	0	2	0	226	5

***Others include the following:**

Radiologist, Microbiologist, Epidemiologist, Dispenser, Licensed Practical Nurse, Psychosocial worker, Hygienist, Logistician, Vaccinator, Ambulance Driver, Procurement Officer, Registrar, Accountant, Secretary, Hospital Administrator, Community Health Volunteer, GIS Specialist, EOC Coordinator, M&E Officer

EPI-Curve of Confirmed Cases and Deaths

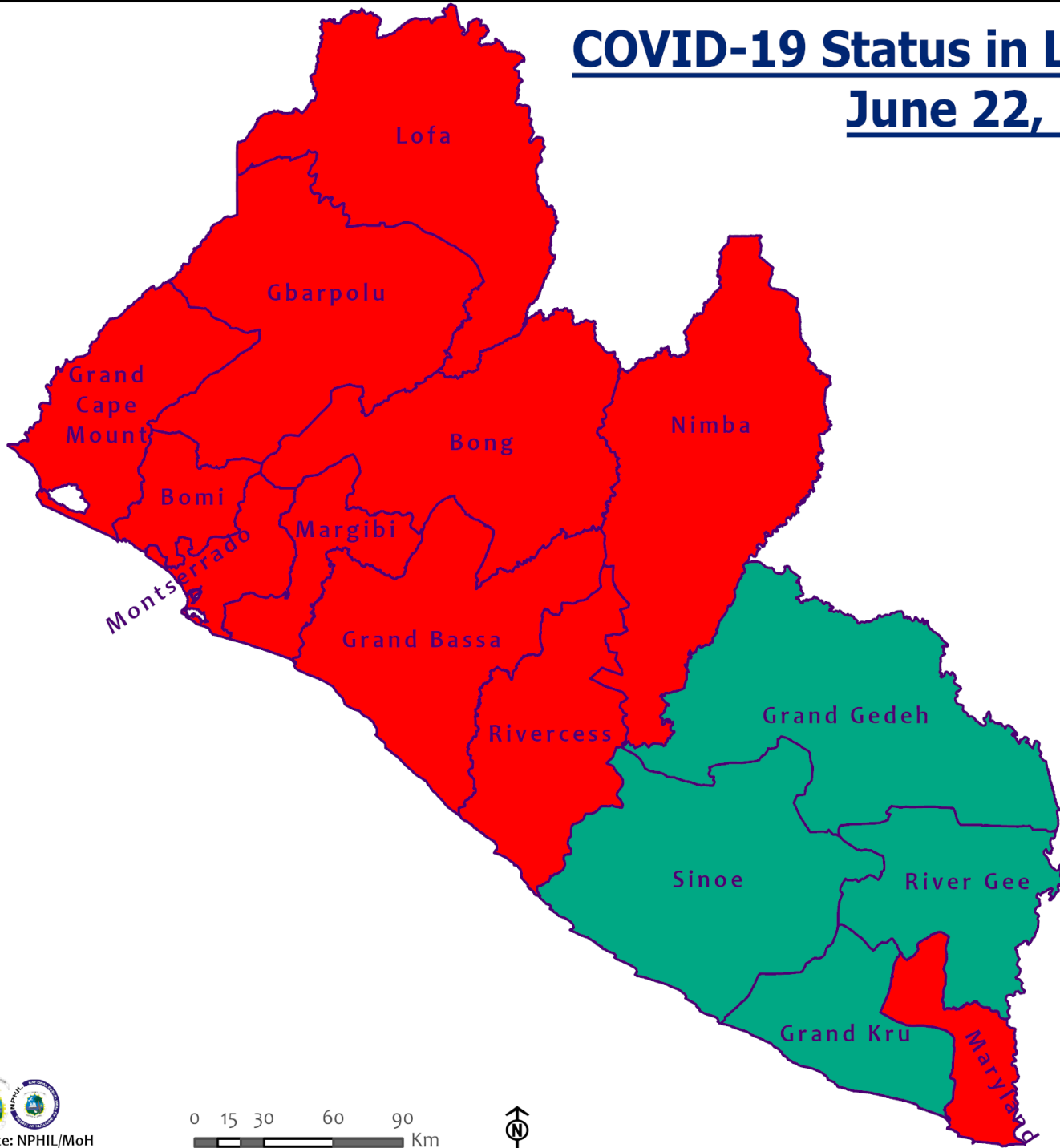
3265



110

0

COVID-19 Status in Liberia by County June 22, 2021



Legend

County Status

- Preparedness
- 28-Day Countdown
- Response



Data Source: NPHIL/MoH



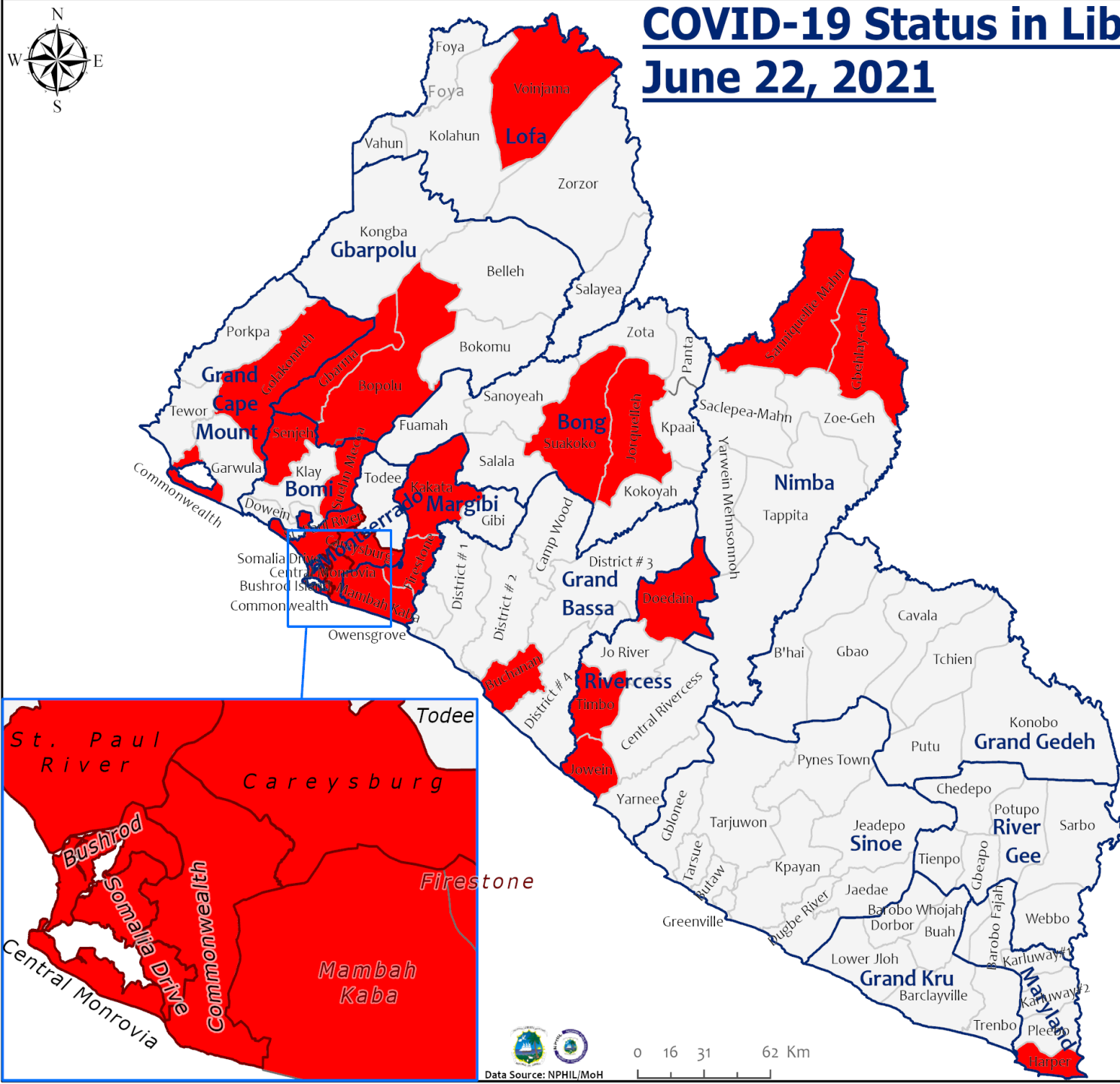
COVID-19 Status in Liberia by District

June 22, 2021



Total Cases: 3,265

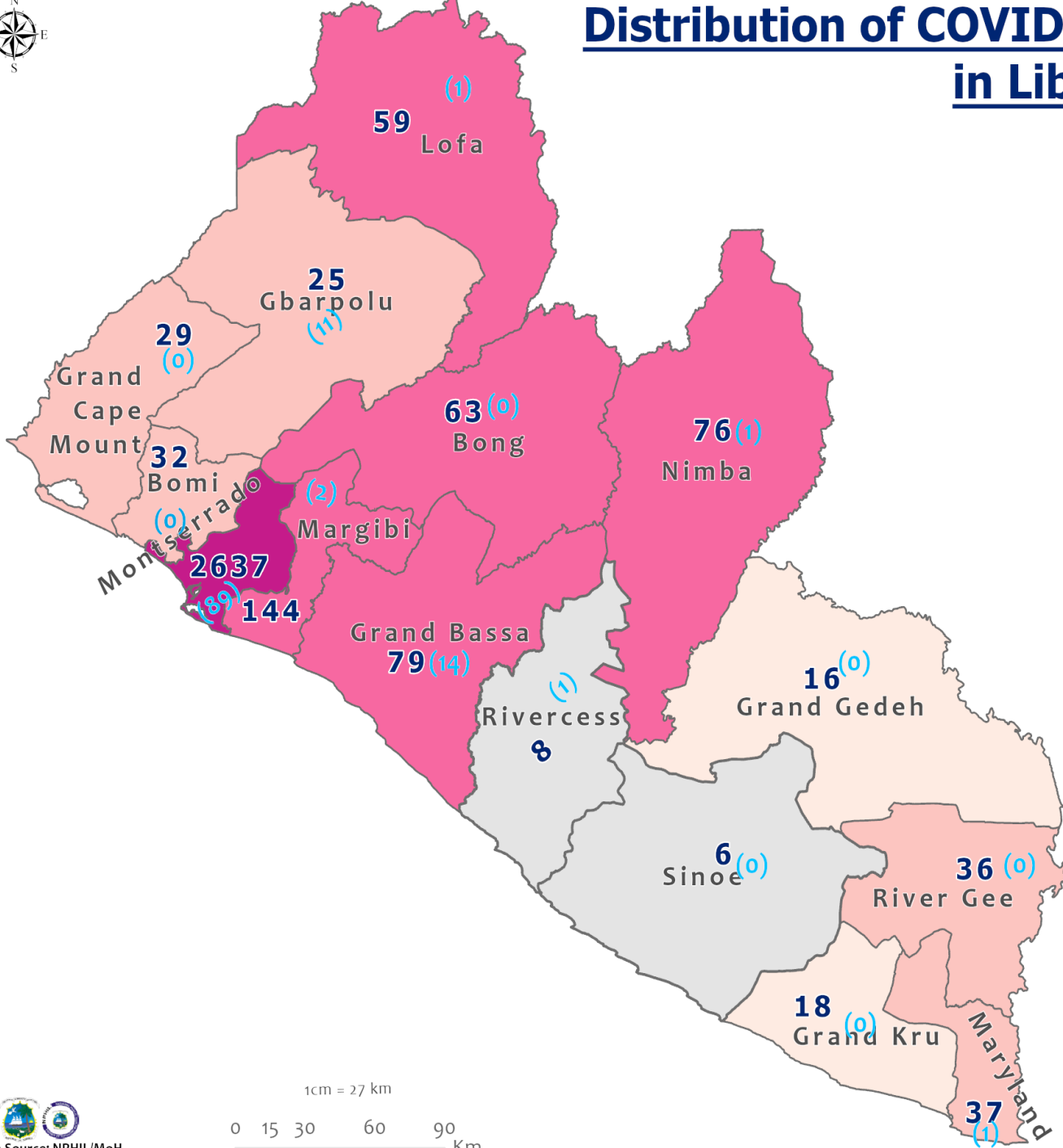
Affected Counties	Cumulative Cases
Montserrado	2,637
Margibi	144
Grand Bassa	79
Nimba	76
Bong	63
Lofa	59
Maryland	37
River Gee	36
Bomi	32
Grand Cape Mount	29
Gbarpolu	25
Grand Kru	18
Grand Gedeh	16
Rivercess	8
Sinoe	6



Legend

- District Status**
- No Active Case
 - Has Active Case

Distribution of COVID-19 Cases by County in Liberia - June 22, 2021



Total cumulative cases:
3,265

Total new cases:
119

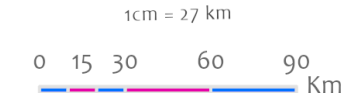
Legend

Number of Cases

- 0 - 10
- 11 - 20
- 21 - 50
- 51 - 200
- 201 - 3000

Cumulative cases
New cases

0 (0)



COVID-19 Cases by District in Liberia - June 22, 2021



Total Cases: 3,265

Affected Counties	Cumulative Cases
Montserrado	2,637
Margibi	144
Grand Bassa	79
Nimba	76
Bong	63
Lofa	59
Maryland	37
River Gee	36
Bomi	32
Grand Cape Mount	29
Gbarpolu	25
Grand Kru	18
Grand Gedeh	16
Rivercess	8
Sinoe	6

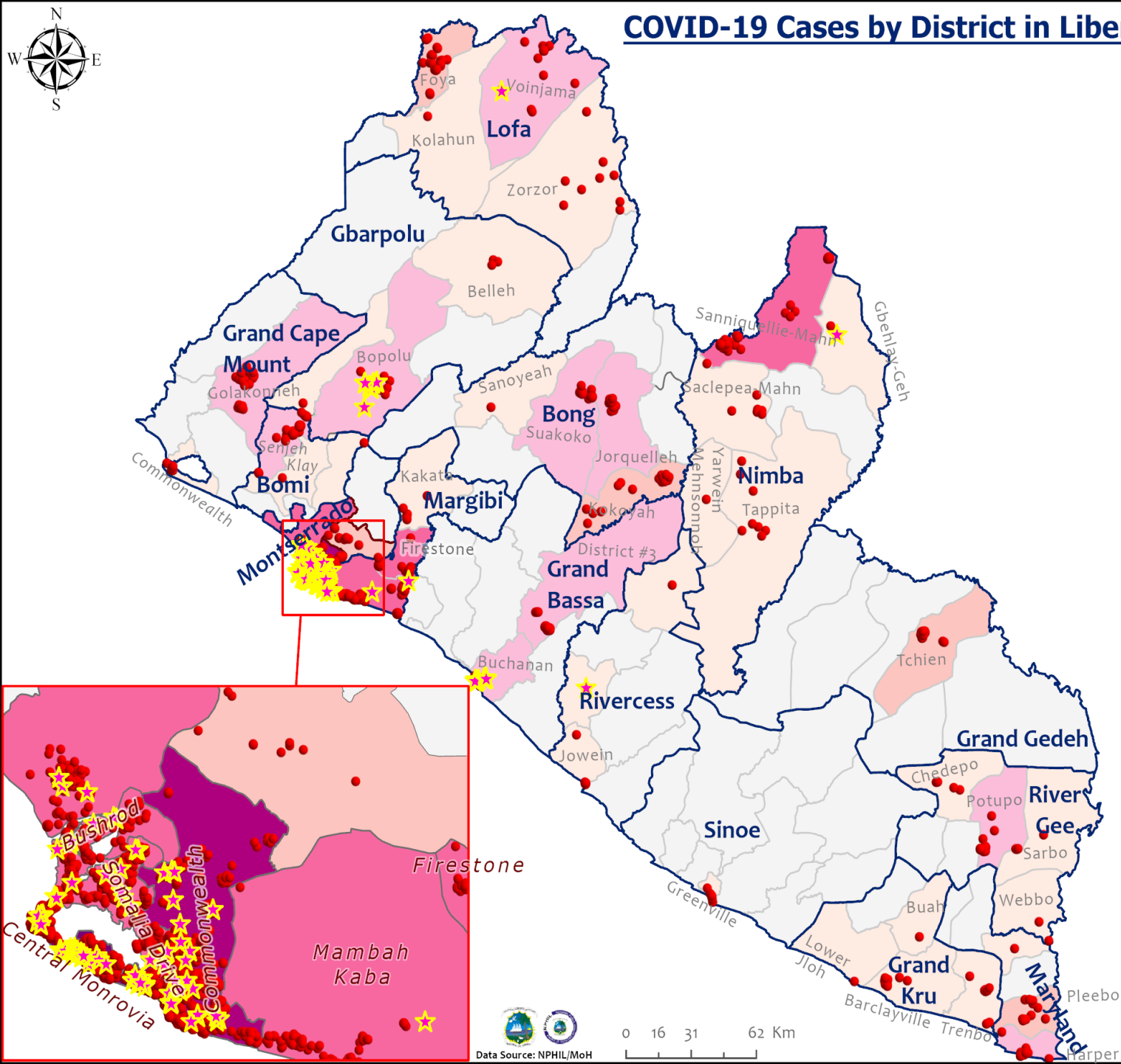
Legend

Case Status

- ★ New confirmed case
- Confirmed cases

Cases / District

- 0
- 1-10
- 11-20
- 21-50
- 51-500
- 500-1000
- 1000-1500



Percent Distribution of COVID-19 Cases by Status in Liberia - 22 June 2021



Total Cases: 3,265

Affected Counties	Cumulative Cases
Montserrado	2,637
Margibi	144
Grand Bassa	79
Nimba	76
Bong	63
Lofa	59
Maryland	37
River Gee	36
Bomi	32
Grand Cape Mount	29
Gbarpolu	25
Grand Kru	18
Grand Gedeh	16
Rivercess	8
Sinoe	6

Legend

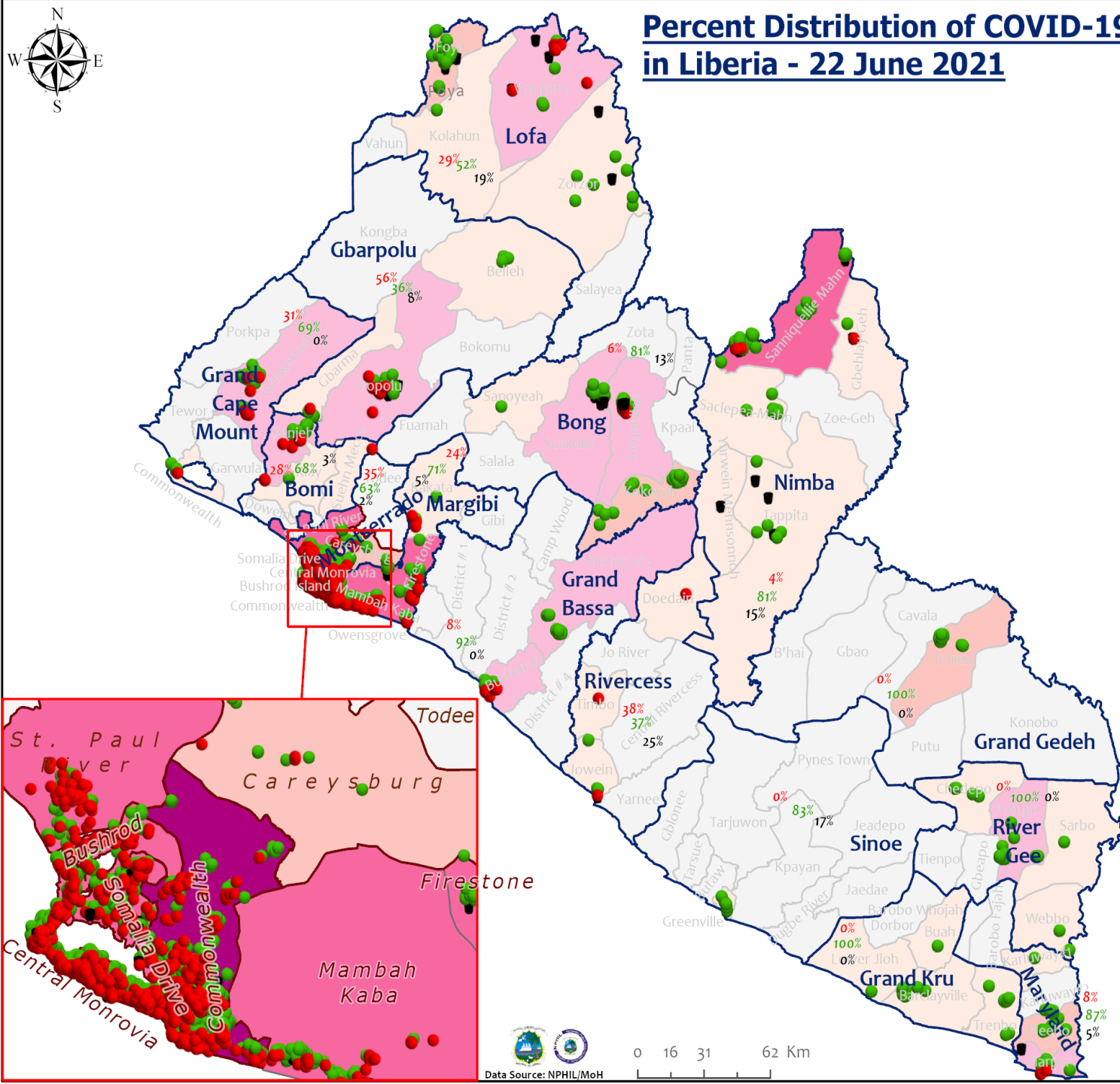
Case Status

- Active
- Recovered
- Dead

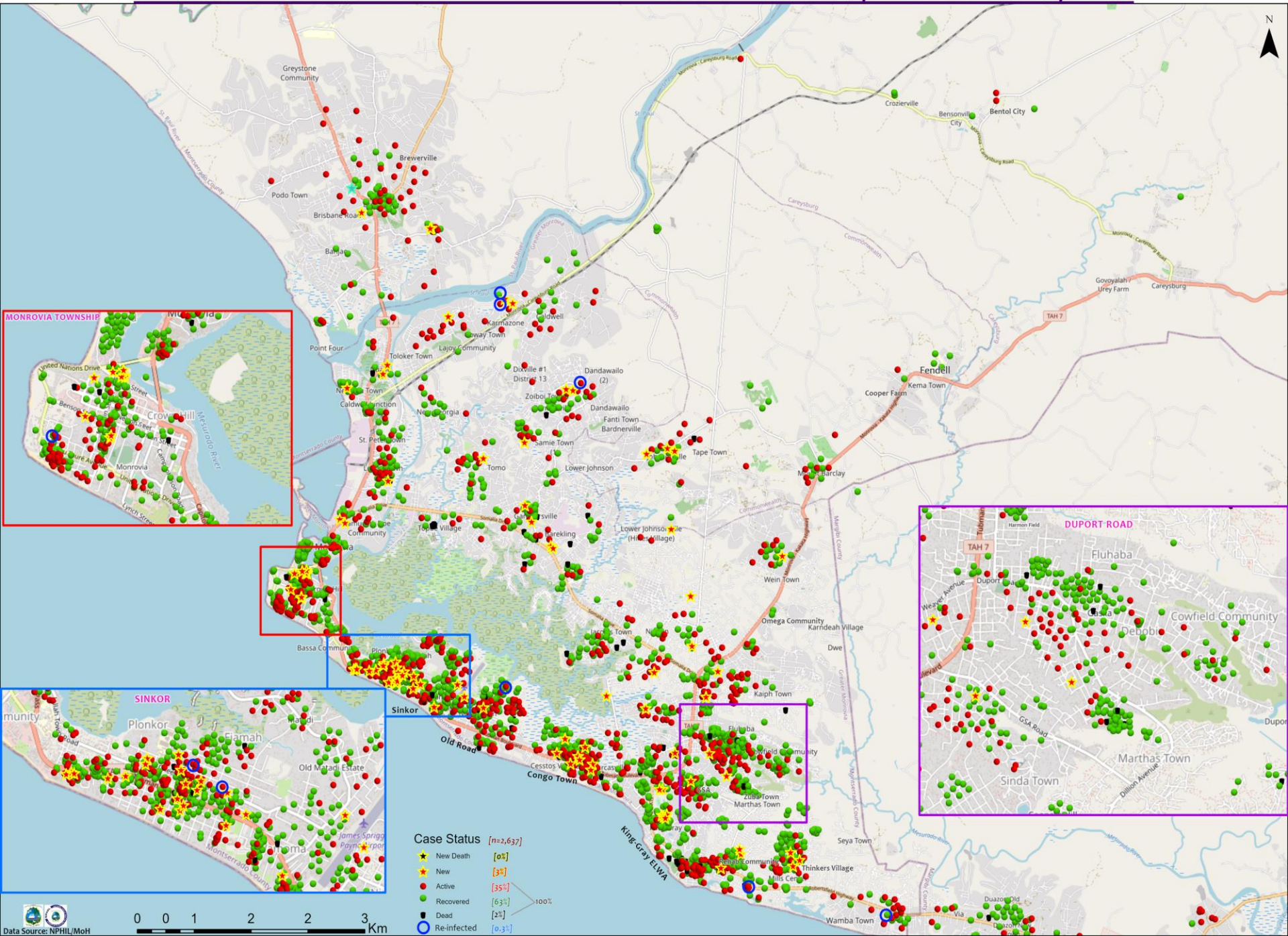
[31]
[66%]
[3%]

Cases / District

- 0
- 1-10
- 11-20
- 21-50
- 51-500
- 501-1000
- 1001-1500



Distribution of COVID-19 Cases in Montserrat Communities, Liberia June 22, 2021



Case Status [n=2,637]

★ New Death	[0%]
★ New	[3%]
● Active	[35%]
● Recovered	[63%]
● Dead	[2%]
○ Re-infected	[0.3%]

100%

Home-Base Care of COVID-19 – June 22, 2021

County	New Admissions	Currently in Admissions	No. Followed-up (In-person/Phone)	Cumulative Admissions	New Recoveries	Cumulative Recoveries	Referrals to TU	Cumulative Referrals to TU	New Death	Cumulative Deaths
Montserratado	25	306	50	674	43	349	0	19	0	0
Nimba				0						
Bong				0						
Maryland										
Cape Mount										
Lofa										
Margibi				0						
Total:	25	306	50	674	43	349	0	19	0	0

Laboratory Samples Evaluated – 22 June 2021

County	Sample Evaluated	New Positive	Repeat Positive	Initial Negative	Repeat Test Negative	Pending Lab Result
Bomi	4	0	0	4	0	0
Gbarpolu	47	11	0	36	0	0
Grand Bassa	18	14	0	4	0	0
Grand Cape Mount	12	0	0	12	0	0
Margibi	23	2	0	21	0	0
Maryland	1	0	0	1	0	0
Montserrado	300	89	6	205	0	0
Lofa	15	1	0	14	0	0
Nimba	1	1	0	0	0	0
Rivercess	12	1	0	11	0	0
TOTAL	433	119	6	308	0	0
Outgoing Traveler						
Outgoing Traveler	291	82	3	206	0	0
Voluntary	36	8	0	28	0	0
Suspected cases	91	25	0	66	0	0
In treatment	3	0	3	0	0	0
Health facility	4	2	2	0	0	0
Contact	8	1	0	7	0	0
NRL						
NRL	384	106	3	275	0	0
UN Clinic Lab	15	3	3	25	0	0
PREVAIL-JFK	34	9	0	25	0	0

Incoming Travelers Testing Positive for COVID-19 (June 1-22, 2021)

Country of embarkment	Cases
Ghana	2
Nigeria	2
D. R. Congo	1
Others	1
Total	6

Nationality	Cases
Liberian	3
Nigerian	1
Congolese	1
Others	1
Total	6

Occupation	Cases
Business	2
Others	4
Total	6

Flight	Cases
AWA	3
ASKY	1
Kenya Airways	1
Others	1
Total	6

Incoming Travelers Testing Positive for COVID-19 (May 1 – 22, June 2021)

Country of embarkment	Cases
Ghana	12
UAE	5
USA	5
Nigeria	3
Pakistan	1
Australia	1
Lebanon	1
Canada	1
India	1
Others	12
Total	42

Occupation	Cases
Business	10
Student	5
PFM Consultant	1
Physician	1
Diplomat	1
Nurse Aide	1
Retired	1
Geologist	1
Others	21
Total	42

Nationality	Cases
Liberian	16
American	4
Ghanaian	4
Indian	2
Nigerian	2
Pakistani	1
Lebanese	1
Canadian	1
Australian	1
Others	10
Total	42

Flight	Cases
Kenya Airways	15
ASKY	10
SN Brussels	6
AWA	4
Air France	2
Others	5
Total	42

Incoming Travelers Testing Positive for COVID-19 (Dec 2020 – 22 June 2021)

Country of embarkment	Cases
Ghana	28
USA	24
Nigeria	17
Lebanon	8
Cote D'Ivoire	6
UAE	5
India	4
Pakistan	3
Nepal	1
Others	37
Total	133

Flight	Cases
ASKY	38
Kenya Airways	26
SN Brussels	20
Air France	16
AWA	12
Air Cote D'Ivoire	10
Others	11
Total	133

Nationality	Cases
Liberian	47
American	18
Nigerian	12
Ghanaian	7
Indian	7
Lebanese	6
Canadian	4
Pakistani	3
Nepal	1
Others	28
Total	133

Occupation	Cases
Business	34
Student	16
Health worker	5
Engineer	4
Diplomat	1
Others	73
Total	133

Thank you for Listening