



Liberia COVID-19 Daily Sitrep 470 (June 28, 2021)

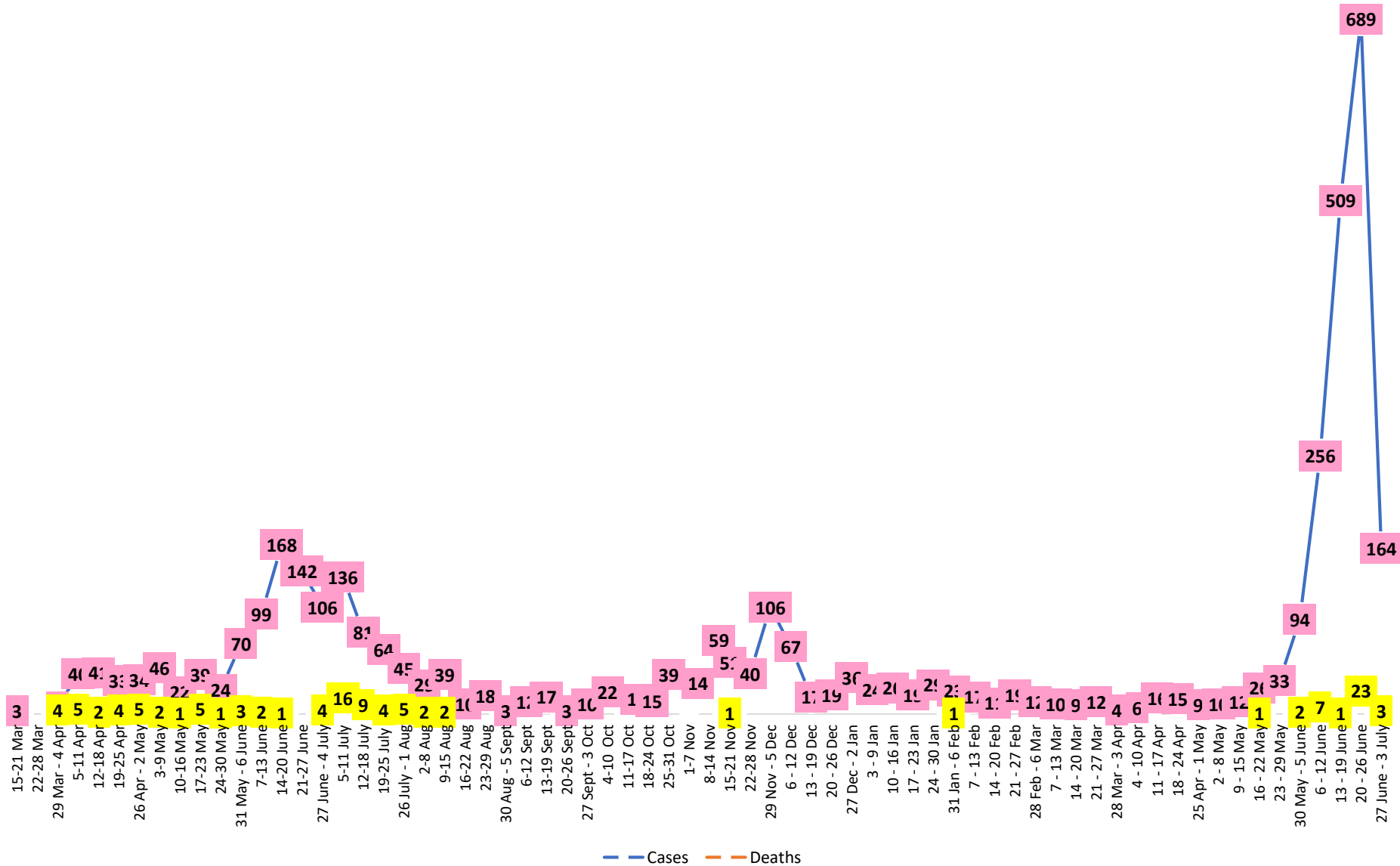
Summary of COVID-19 Cases by Reporting County, Liberia, 16 March 2020 – 28 June 2021

County	Laboratory Confirmed Cases	Confirmed Cases on Contact List	Confirmed Cumulative Cases
Bomi	0	0	45
Bong	3	0	84
Gbarpolu	0	0	26
Grand Bassa	0	0	81
Grand Cape Mount	2	0	35
Grand Kru	0	0	18
Grand Gedeh	0	0	16
Lofa	0	0	62
Margibi	8	0	165
Maryland	0	0	37
Montserrado	93	0	3188
Nimba	0	0	86
Rivercess	0	0	13
River Gee	0	0	36
Sinoe	0	0	8
NATIONAL	106	0	3900

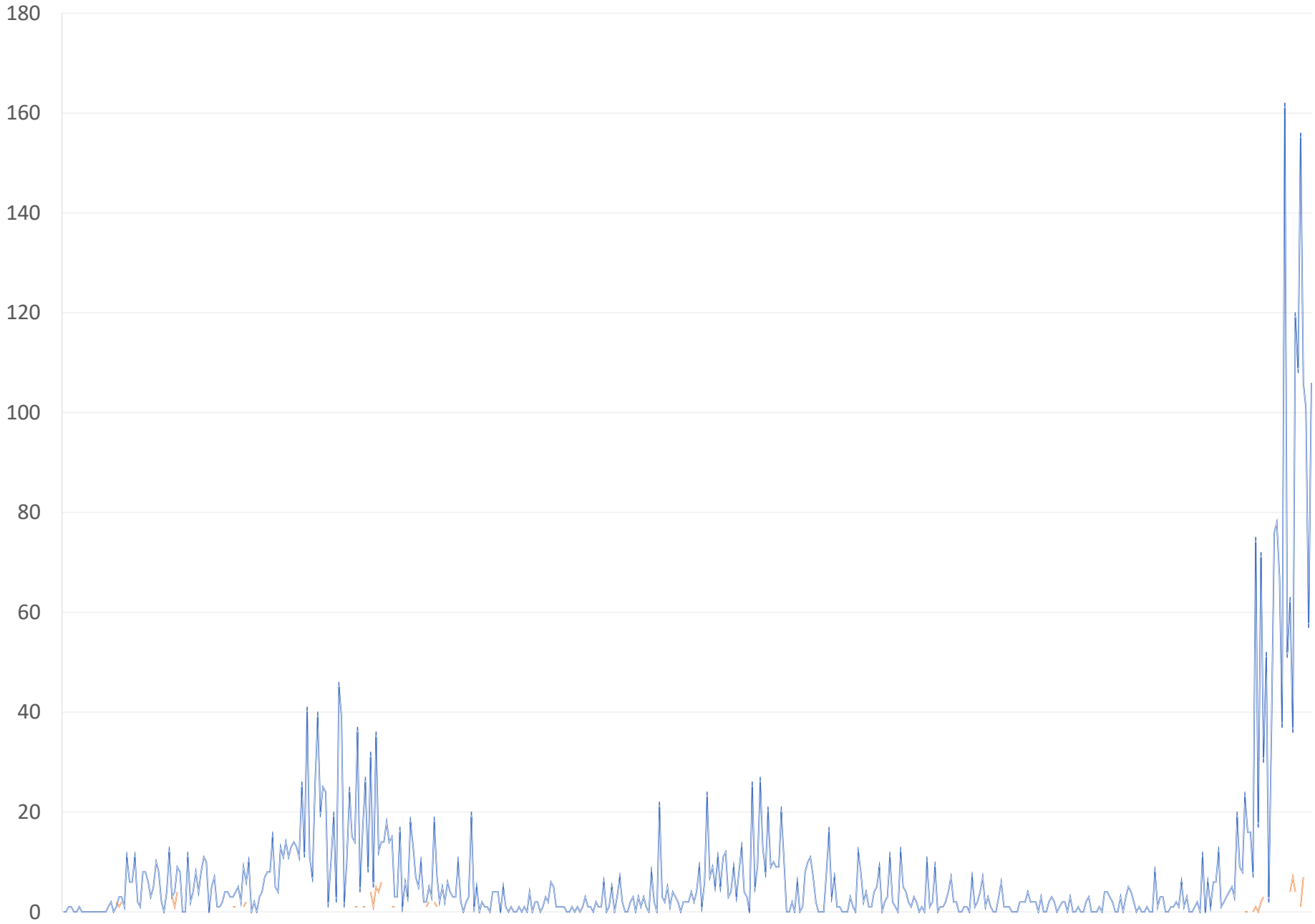
Demographic Breakdown (Gender & Age) of Confirmed COVID-19 Cases (16 March 2020 – 28 June 2021)

County	<15 years		15 - 34		35 - 54		55+		All ages		Total Confirmed
	M	F	M	F	M	F	M	F	M	F	
Bomi	2	2	7	9	13	9	1	2	23	22	45
Bong	3	1	10	9	30	12	13	6	56	28	84
Gbarpolu	1	2	5	4	8	4	2	0	16	10	26
Grand Bassa	14	4	13	13	18	10	6	3	51	30	81
Grand Cape Mount	0	0	14	0	19	0	2	0	35	0	35
Grand Kru	0	0	2	5	4	5	2	0	8	10	18
Grand Gedeh	0	1	1	2	7	3	2	0	10	6	16
Lofa	6	4	9	9	17	6	8	3	40	22	62
Margibi	7	6	25	17	46	25	26	13	104	61	165
Maryland	2	0	10	6	10	5	2	2	24	13	37
Montserrado	76	79	630	440	923	434	373	233	2002	1186	3188
Nimba	1	4	15	12	31	9	9	5	56	30	86
Rivercess	0	0	2	3	4	2	2	0	8	5	13
River Gee	0	0	4	3	19	5	5	0	28	8	36
Sinoe	0	0	1	0	6	1	0	0	7	1	8
National	112	103	748	532	1155	530	453	267	2468	1432	3900

COVID-19 WEEKLY EPI-CURVE



— Daily Cases — Daily Deaths



Summary of COVID-19 Deaths by Reporting County, Liberia, 16 March 2020 – 28 June 2021

County	New Suspected Deaths	COVID-19 Treatment Unit	Total in COVID-19 Treatment Unit	Health Facility	Total in Health Facility	Community	Total in Community	Confirmed Deaths on Contact List	Cumulative Deaths
Bomi	0	0	0	0	1	0	0	0	1
Bong	0	0	0	0	7	0	1	0	8
Gbarpolu	0	0	0	0	2	0	0	0	2
Grand Bassa	0	0	0	0	1	0	0	0	1
Grand Cape Mount	0	0	0	0	0	0	0	0	0
Grand Gedeh	0	0	0	0	0	0	0	0	0
Grand Kru	0	0	0	0	0	0	0	0	0
Lofa	0	0	0	0	6	0	5	0	11
Maryland	0	0	0	0	2	0	0	0	2
Margibi	0	0	2	0	6	0	0	0	8
Montserrado	0	0	22	4	38	0	16	0	76
Nimba	0	0	2	0	9	0	4	0	15
Rivercess	0	0	0	0	1	0	1	0	2
River Gee	0	0	0	0	0	0	0	0	0
Sinoe	0	0	0	0	1	0	0	0	1
National	0	0	26	4	74	0	27	0	127

Daily and Cumulative Healthcare Worker (HCW) COVID-19 Cases and Deaths by County, Liberia, 16 March 2020 – 28 June 2021

County	DAILY REPORT						CUMULATIVE CASES (ALIVE & DEAD)	
	New Suspected & High Risk Cases (Alive)			New Suspect Death	Laboratory Confirmed Cases	Confirmed Cases on Contact List	Confirmed	Deaths
	Suspect	High Risk	Total					
Bomi	0	0	0	0	0	0	8	0
Bong	0	0	0	0	0	0	21	4
Gbarpolu	0	0	0	0	0	0	1	0
Grand Bassa	0	0	0	0	0	0	21	0
Grand Gedeh	0	0	0	0	0	0	2	0
Grand Kru	0	0	0	0	0	0	14	0
Lofa	0	0	0	0	0	0	17	0
Margibi	0	0	0	0	0	0	12	1
Maryland	0	0	0	0	0	0	16	0
Montserrado	0	0	0	0	0	0	88	1
Nimba	0	0	0	0	0	0	15	0
Rivercess	0	0	0	0	0	0	3	0
River Gee	0	0	0	0	0	0	10	0
Sinoe	0	0	0	0	0	0	3	0
NATIONAL	0	0	0	0	0	0	231	6

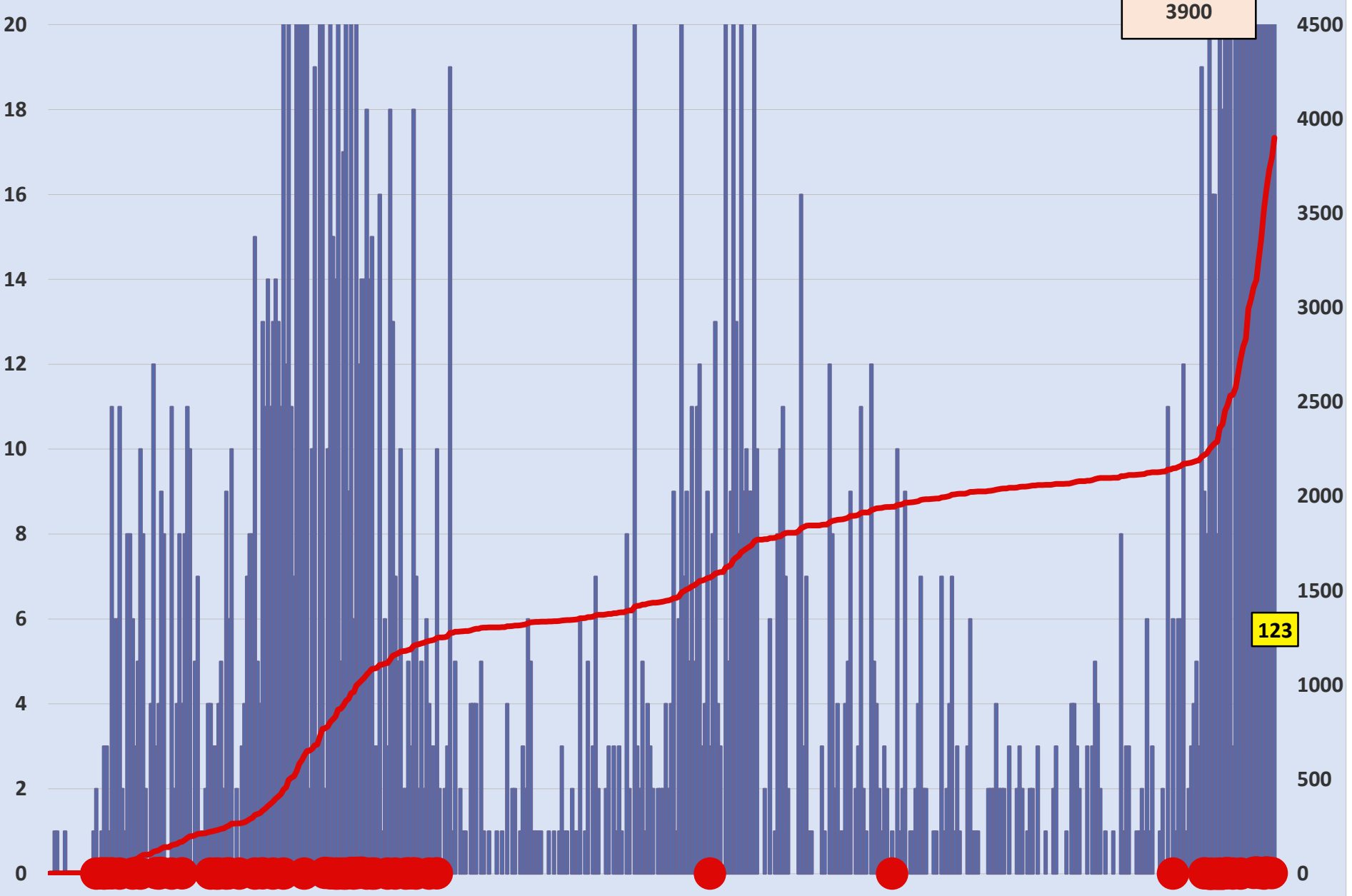
Cadre Cases and Deaths by Health Care Workers (16 March 2020 – 28 June 2021)

Health Care Worker Cadre	Montserratado		Margibi		Nimba		River Gee		Sinoe		Grand Kru		Gbarpolu		Bong		Lofa		Grand Bassa		Maryland		Bomi		Rivercess		Grand Gedeh		National (Total)	
	Cases	Deaths	Cases	Deaths	Cases	Deaths	Cases	Deaths	Cases	Deaths	Cases	Deaths	Cases	Deaths	Cases	Deaths	Cases	Deaths	Cases	Deaths	Cases	Deaths	Cases	Deaths	Cases	Deaths	Cases	Deaths	Cases	Deaths
Doctors	17	0	1	0	0	0	1	0	0	0	0	0	0	0	1	0	0	0	1	0	0	0	0	0	0	0	0	21	0	
Pharmacists	4	0	0	0	0	0	0	0	0	0	0	0	0	0	0	0	0	0	0	0	0	0	0	0	0	0	4	0		
Nurses	23	1	2	0	2	0	5	0	0	0	2	0	1	1	12	1	8	0	5	0	1	0	1	0	0	0	62	3		
Nurse Aid	0	0	0	0	2	0	0	0	0	0	4	0	0	0	0	0	0	0	8	0	2	0	0	0	0	0	16	0		
Midwife	0	0	0	0	0	0	1	0	0	0	1	0	0	0	1	0	1	0	1	0	0	0	0	0	0	0	5	0		
Physician Assistants	8	0	1	0	1	0	1	0	0	0	1	0	0	0	0	0	1	0	1	0	0	0	0	0	0	0	14	0		
Lab Technician	9	0	1	0	2	0	0	0	1	0	1	0	0	0	0	0	2	0	0	0	10	0	0	0	3	0	29	0		
Environmental Health Technicians	5	0	0	0	0	0	0	0	0	0	0	0	0	0	0	0	0	0	0	0	0	0	0	0	0	0	5	0		
Dieticians	0	0	7	1	0	0	0	0	0	0	0	0	0	0	0	0	0	0	0	0	0	0	0	0	0	0	7	1		
Hospital Cleaner	1	0	0	0	0	0	0	0	0	0	1	0	0	0	1	0	0	0	1	0	2	0	0	0	0	0	6	0		
Others*	21	0	0	0	7	0	2	0	2	0	4	0	0	0	4	1	5	0	4	0	1	0	5	0	0	2	57	1		
Total:	88	1	12	1	14	0	10	0	3	0	14	0	1	1	19	2	17	0	21	0	16	0	6	0	3	0	2	0	226	5

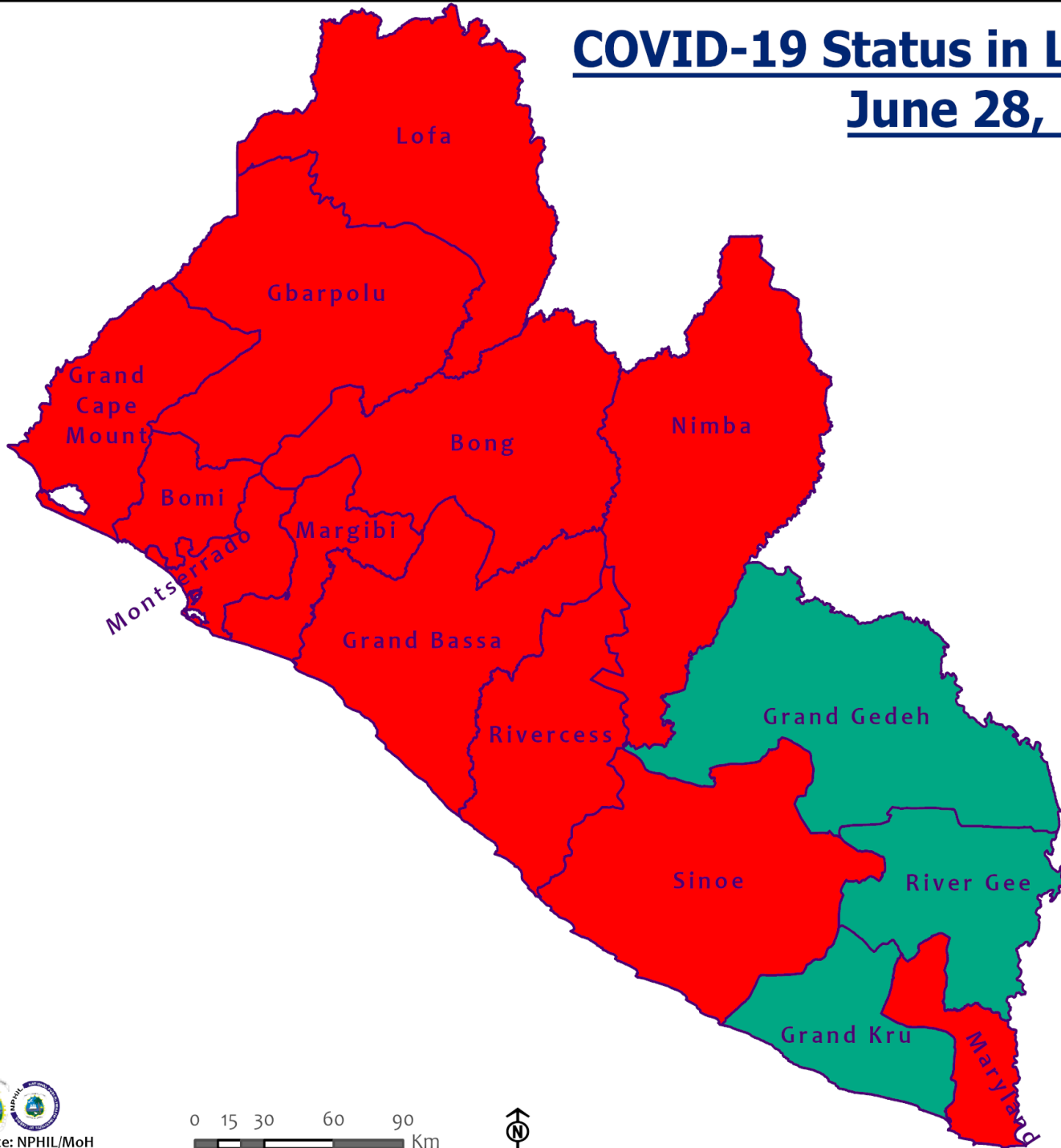
***Others include the following:**

Radiologist, Microbiologist, Epidemiologist, Dispenser, Licensed Practical Nurse, Psychosocial worker, Hygienist, Logistician, Vaccinator, Ambulance Driver, Procurement Officer, Registrar, Accountant, Secretary, Hospital Administrator, Community Health Volunteer, GIS Specialist, EOC Coordinator, M&E Officer

EPI-Curve of Confirmed Cases and Deaths



COVID-19 Status in Liberia by County June 28, 2021



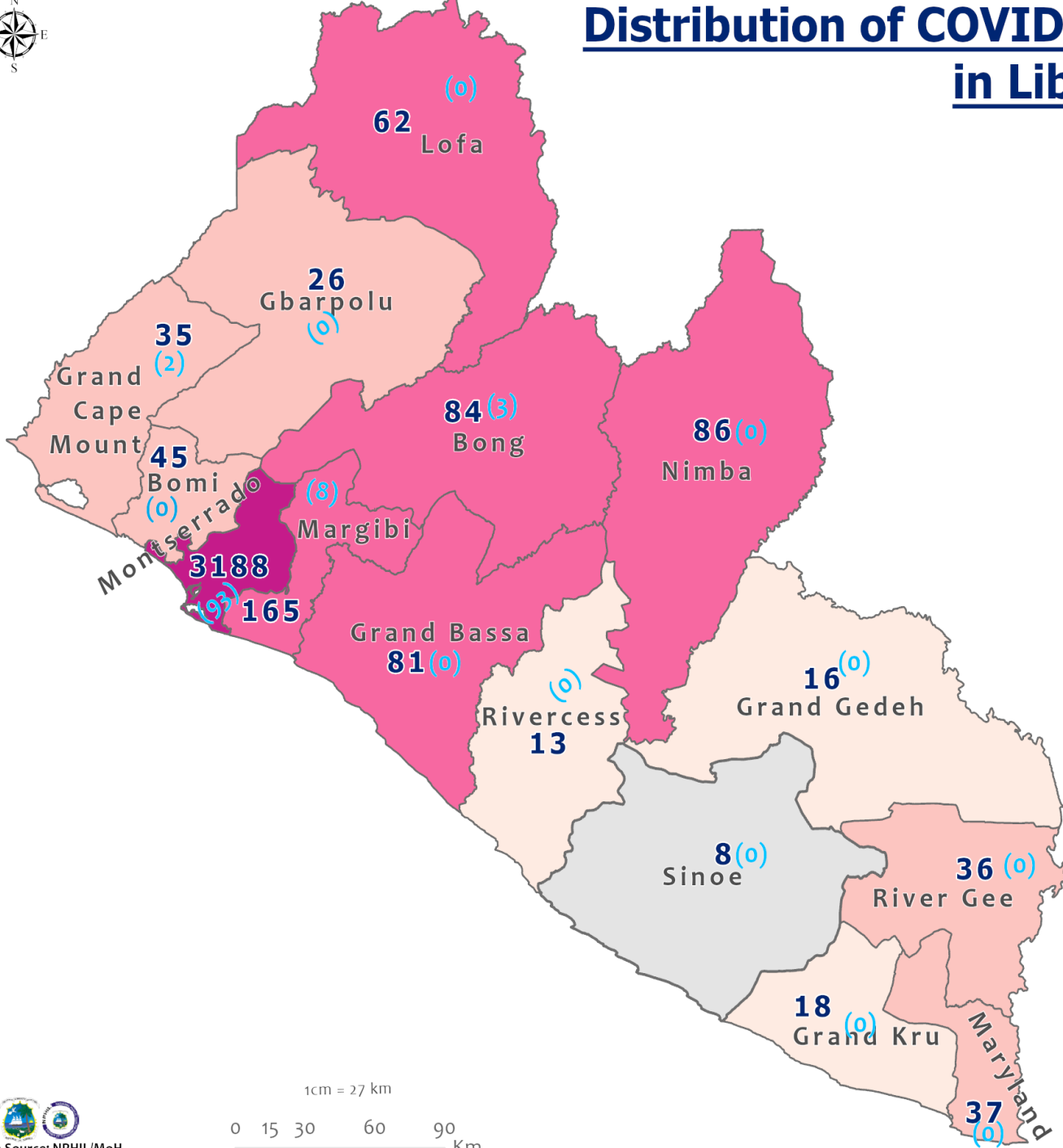
Legend

County Status

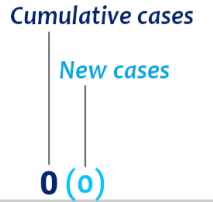
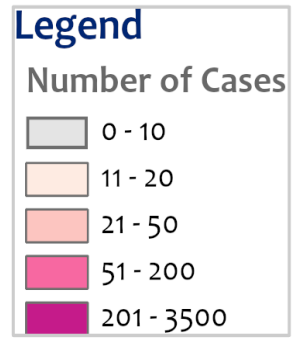
- Preparedness
- 28-Day Countdown
- Response



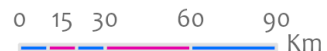
Distribution of COVID-19 Cases by County in Liberia - June 28, 2021



Total cumulative cases:
3,900
 Total new cases:
106



1cm = 27 km



Home-Base Care of COVID-19 – June 28, 2021

Country	New Admissions	Currently in Admissions	No. Followed-up (In-person/Phone)	Cumulative Admissions	New Recoveries	Cumulative Recoveries	Referrals to TU	Cumulative Referrals to TU	New Death	Cumulative Deaths
Montserrat	43	404	80	864	41	439	2	21	0	0
Nimba				0						
Bong				0						
Maryland										
Cape Mount										
Lofa										
Margibi				0						
Total:	43	404	80	864	41	439	2	21	0	0

Laboratory Samples Evaluated – 28 June 2021

County	Sample Evaluated	New Positive	Repeat Positive	Initial Negative	Repeat Test Negative	Pending Lab Result
Bong	4	3	0	1	0	0
Grand Bassa	1	0	0	1	0	0
Grand Cape Mount	5	2	0	3	0	0
Margibi	41	8	0	29	0	4
Montserrado	489	93	22	354	0	20
TOTAL	540	106	22	388	0	24
 						
Outgoing Traveler	444	79	16	325	0	24
Voluntary	72	16	3	53	0	0
Self Isolation	3	0	3	0	0	0
Contact	8	0	0	8	0	0
Health facility	9	7	0	2	0	0
Post Mortem	4	4	0	0	0	0
 						
NRL	440	86	16	314	0	24
US-Embassy Lab	5	0	0	5	0	0
PREVAIL-JFK	75	19	3	53	0	0
UN Clinic	20	1	3	16	0	0

Incoming Travelers Testing Positive for COVID-19 (June 1-28, 2021)

Country of embarkment	Cases
Ghana	2
Nigeria	2
D. R. Congo	1
Others	1
Total	6

Nationality	Cases
Liberian	3
Nigerian	1
Congolese	1
Others	1
Total	6

Occupation	Cases
Business	2
Others	4
Total	6

Flight	Cases
AWA	3
ASKY	1
Kenya Airways	1
Others	1
Total	6

Incoming Travelers Testing Positive for COVID-19 (May 1 – 28, June 2021)

Country of embarkment	Cases
Ghana	12
UAE	5
USA	5
Nigeria	3
Pakistan	1
Australia	1
Lebanon	1
Canada	1
India	1
Others	12
Total	42

Occupation	Cases
Business	10
Student	5
PFM Consultant	1
Physician	1
Diplomat	1
Nurse Aide	1
Retired	1
Geologist	1
Others	21
Total	42

Nationality	Cases
Liberian	16
American	4
Ghanaian	4
Indian	2
Nigerian	2
Pakistani	1
Lebanese	1
Canadian	1
Australian	1
Others	10
Total	42

Flight	Cases
Kenya Airways	15
ASKY	10
SN Brussels	6
AWA	4
Air France	2
Others	5
Total	42

Incoming Travelers Testing Positive for COVID-19 (Dec 2020 – 28 June 2021)

Country of embarkment	Cases
Ghana	28
USA	24
Nigeria	17
Lebanon	8
Cote D'Ivoire	6
UAE	5
India	4
Pakistan	3
Nepal	1
Others	37
Total	133

Flight	Cases
ASKY	38
Kenya Airways	26
SN Brussels	20
Air France	16
AWA	12
Air Cote D'Ivoire	10
Others	11
Total	133

Nationality	Cases
Liberian	47
American	18
Nigerian	12
Ghanaian	7
Indian	7
Lebanese	6
Canadian	4
Pakistani	3
Nepal	1
Others	28
Total	133

Occupation	Cases
Business	34
Student	16
Health worker	5
Engineer	4
Diplomat	1
Others	73
Total	133

Thank you for Listening