



# **Liberia COVID-19 Daily Sitrep 477 (July 5, 2021)**

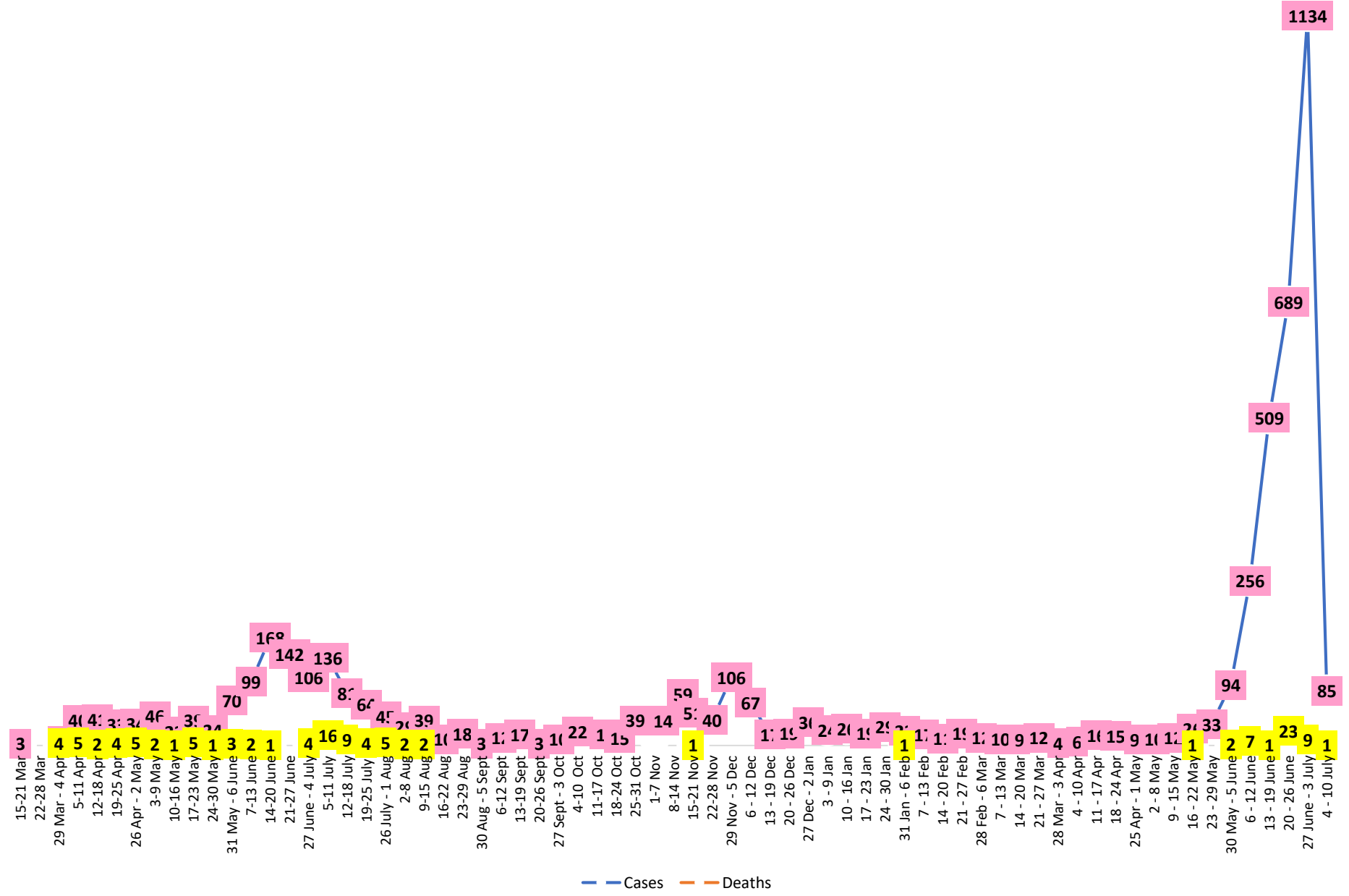
## Summary of COVID-19 Cases by Reporting County, Liberia, 16 March 2020 – 5 July 2021

| County                  | Laboratory<br>Confirmed Cases | Confirmed Cases<br>on Contact List | Confirmed<br>Cumulative Cases |
|-------------------------|-------------------------------|------------------------------------|-------------------------------|
| <b>Bomi</b>             | 0                             | 0                                  | 63                            |
| <b>Bong</b>             | 1                             | 0                                  | 104                           |
| <b>Gbarpolu</b>         | 0                             | 0                                  | 38                            |
| <b>Grand Bassa</b>      | 1                             | 0                                  | 91                            |
| <b>Grand Cape Mount</b> | 2                             | 0                                  | 55                            |
| <b>Grand Kru</b>        | 0                             | 0                                  | 18                            |
| <b>Grand Gedeh</b>      | 0                             | 0                                  | 17                            |
| <b>Lofa</b>             | 4                             | 0                                  | 88                            |
| <b>Margibi</b>          | 4                             | 0                                  | 225                           |
| <b>Maryland</b>         | 2                             | 0                                  | 46                            |
| <b>Montserrado</b>      | <b>20</b>                     | <b>0</b>                           | <b>4037</b>                   |
| <b>Nimba</b>            | 2                             | 0                                  | 108                           |
| <b>Rivercess</b>        | 0                             | 0                                  | 15                            |
| <b>River Gee</b>        | 0                             | 0                                  | 36                            |
| <b>Sinoe</b>            | 1                             | 0                                  | 14                            |
| <b>NATIONAL</b>         | <b>37</b>                     | <b>0</b>                           | <b>4955</b>                   |

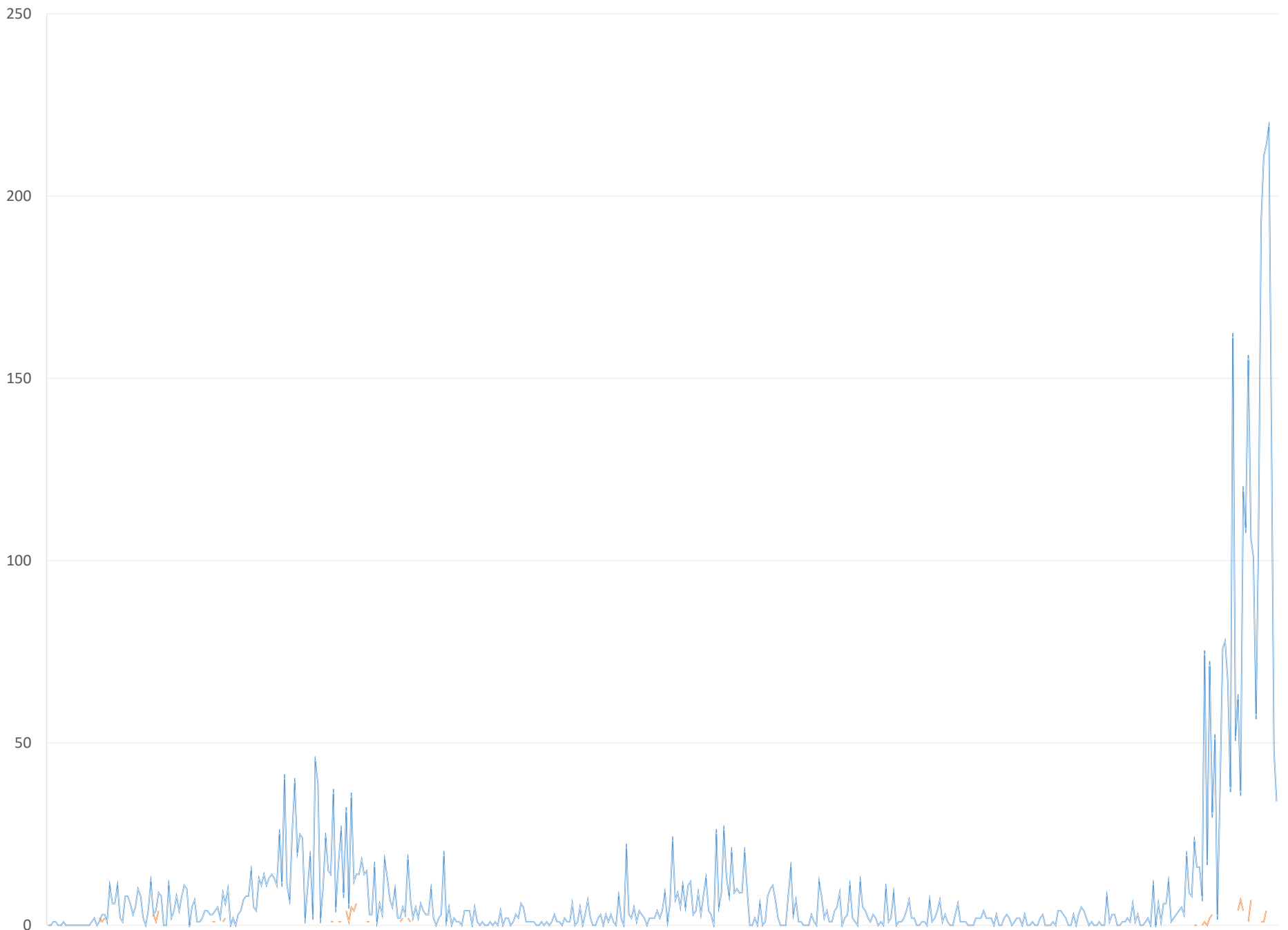
# Demographic Breakdown (Gender & Age) of Confirmed COVID-19 Cases (16 March 2020 – 5 June 2021)

| County             | <15 years  |            | 15 - 34    |            | 35 - 54     |            | 55+        |            | All ages    |             | Total Confirmed |
|--------------------|------------|------------|------------|------------|-------------|------------|------------|------------|-------------|-------------|-----------------|
|                    | M          | F          | M          | F          | M           | F          | M          | F          | M           | F           |                 |
| Bomi               | 2          | 2          | 7          | 12         | 25          | 10         | 2          | 3          | 36          | 27          | 63              |
| Bong               | 3          | 2          | 11         | 10         | 41          | 15         | 14         | 8          | 69          | 35          | 104             |
| Gbarpolu           | 1          | 2          | 9          | 4          | 16          | 4          | 2          | 0          | 28          | 10          | 38              |
| Grand Bassa        | 14         | 6          | 14         | 14         | 20          | 11         | 8          | 5          | 56          | 36          | 92              |
| Grand Cape Mount   | 1          | 0          | 21         | 0          | 29          | 0          | 3          | 0          | 54          | 0           | 54              |
| Grand Kru          | 0          | 0          | 2          | 5          | 4           | 5          | 2          | 0          | 8           | 10          | 18              |
| Grand Gedeh        | 0          | 1          | 1          | 2          | 7           | 4          | 2          | 0          | 10          | 7           | 17              |
| Lofa               | 11         | 6          | 12         | 10         | 22          | 8          | 14         | 5          | 59          | 29          | 88              |
| Margibi            | 8          | 6          | 31         | 21         | 70          | 34         | 40         | 15         | 149         | 76          | 225             |
| Maryland           | 2          | 0          | 10         | 6          | 15          | 7          | 3          | 3          | 30          | 16          | 46              |
| <b>Montserrado</b> | 91         | 87         | <b>826</b> | 531        | <b>1196</b> | <b>532</b> | <b>478</b> | <b>296</b> | 2591        | 1446        | <b>4037</b>     |
| Nimba              | 1          | 4          | 16         | 14         | 39          | 13         | 16         | 5          | 72          | 36          | 108             |
| Rivercess          | 0          | 0          | 2          | 3          | 5           | 2          | 2          | 1          | 9           | 6           | 15              |
| River Gee          | 0          | 0          | 4          | 3          | 19          | 5          | 5          | 0          | 28          | 8           | 36              |
| Sinoe              | 0          | 0          | 1          | 0          | 11          | 1          | 0          | 1          | 12          | 2           | 14              |
| <b>National</b>    | <b>134</b> | <b>116</b> | <b>967</b> | <b>635</b> | <b>1519</b> | <b>651</b> | <b>591</b> | <b>342</b> | <b>3211</b> | <b>1744</b> | <b>4955</b>     |

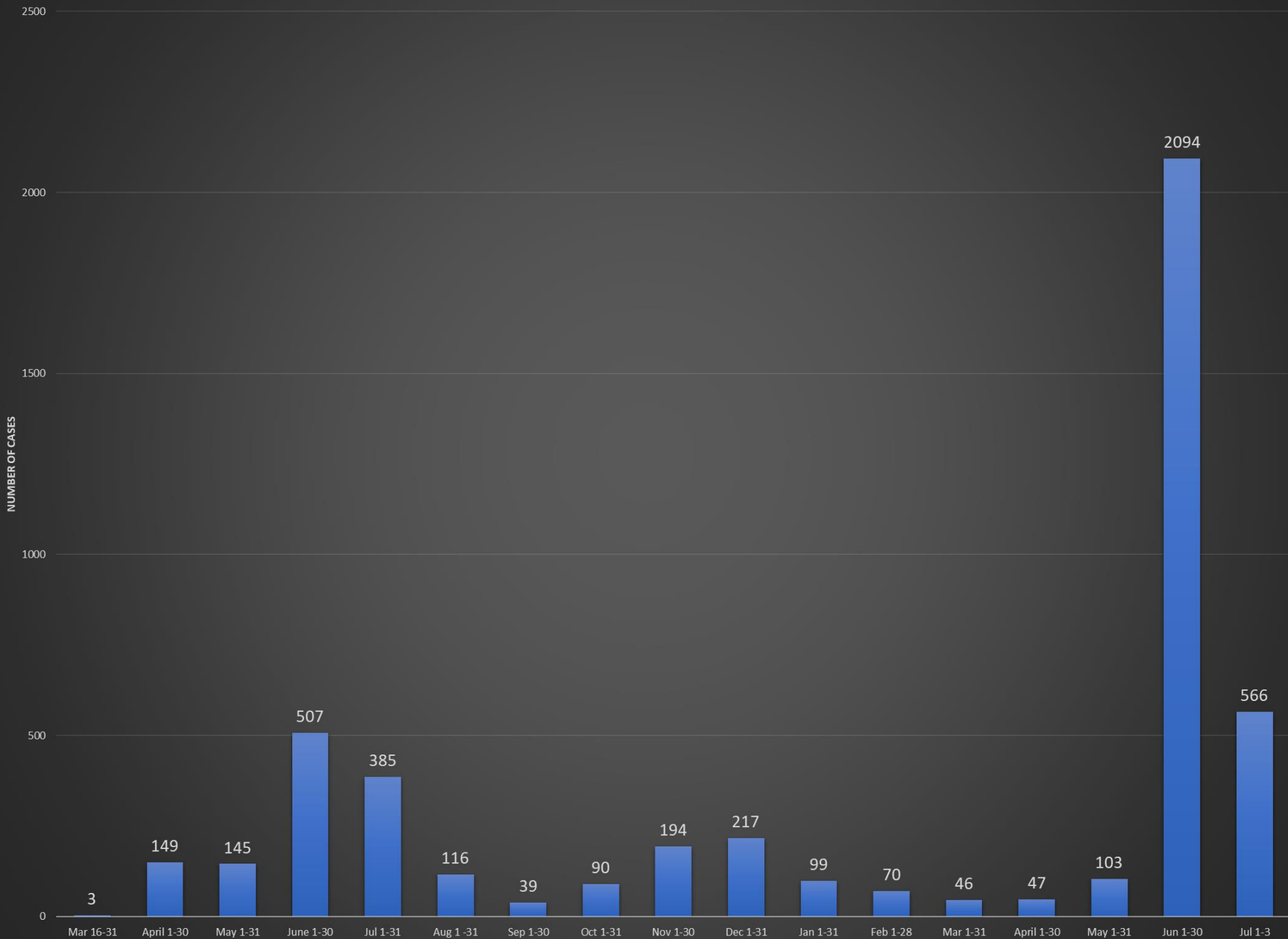
# COVID-19 WEEKLY EPI-CURVE



Daily Cases Daily Deaths



# Full and Partial Monthly Confirmed COVID-19 Cases in Liberia - Mar 16, 2020 - July 3, 2021. ( n = 4,870 )



# Summary of COVID-19 Deaths by Reporting County, Liberia, 16 March 2020 – 5 July 2021

| County           | Now Suspected Deaths | COVID-19 Treatment Unit | Total in COVID-19 Treatment Unit | Health Facility | Total in Health Facility | Community | Total in Community | Confirmed Deaths on Contact List | Cumulative Deaths |
|------------------|----------------------|-------------------------|----------------------------------|-----------------|--------------------------|-----------|--------------------|----------------------------------|-------------------|
| Bomi             | 0                    | 0                       | 0                                | 0               | 1                        | 0         | 0                  | 0                                | 1                 |
| Bong             | 0                    | 0                       | 0                                | 0               | 7                        | 0         | 1                  | 0                                | 8                 |
| Gbarpolu         | 0                    | 0                       | 0                                | 0               | 2                        | 0         | 0                  | 0                                | 2                 |
| Grand Bassa      | 0                    | 0                       | 0                                | 0               | 1                        | 0         | 0                  | 0                                | 1                 |
| Grand Cape Mount | 0                    | 0                       | 0                                | 0               | 0                        | 0         | 0                  | 0                                | 0                 |
| Grand Gedeh      | 0                    | 0                       | 0                                | 0               | 0                        | 0         | 0                  | 0                                | 0                 |
| Grand Kru        | 0                    | 0                       | 0                                | 0               | 0                        | 0         | 0                  | 0                                | 0                 |
| Lofa             | 0                    | 0                       | 0                                | 0               | 6                        | 0         | 5                  | 0                                | 11                |
| Maryland         | 0                    | 0                       | 0                                | 0               | 2                        | 0         | 0                  | 0                                | 2                 |
| Margibi          | 0                    | 0                       | 2                                | 0               | 6                        | 0         | 0                  | 0                                | 8                 |
| Montserrado      | 0                    | 1                       | 27                               | 0               | 38                       | 2         | 18                 | 0                                | 83                |
| Nimba            | 0                    | 0                       | 2                                | 0               | 9                        | 0         | 4                  | 0                                | 15                |
| Rivercess        | 0                    | 0                       | 0                                | 0               | 1                        | 0         | 1                  | 0                                | 2                 |
| River Gee        | 0                    | 0                       | 0                                | 0               | 0                        | 0         | 0                  | 0                                | 0                 |
| Sinoe            | 0                    | 0                       | 0                                | 0               | 1                        | 0         | 0                  | 0                                | 1                 |
| <b>National</b>  | <b>0</b>             | <b>1</b>                | <b>31</b>                        | <b>0</b>        | <b>74</b>                | <b>2</b>  | <b>29</b>          | <b>0</b>                         | <b>134</b>        |

# Daily and Cumulative Healthcare Worker (HCW) COVID-19 Cases and Deaths by County, Liberia, 16 March 2020 – 5 July 2021

| County          | DAILY REPORT                            |           |          |                   |                            |                                 | CUMULATIVE CASES (ALIVE & DEAD) |          |
|-----------------|---|-----------|----------|-------------------|----------------------------|---------------------------------|---------------------------------|----------|
|                 | New Suspected & High Risk Cases (Alive) |           |          | New Suspect Death | Laboratory Confirmed Cases | Confirmed Cases on Contact List | Confirmed                       | Deaths   |
|                 | Suspect                                 | High Risk | Total    |                   |                            |                                 |                                 |          |
| Bomi            | 0                                       | 0         | 0        | 0                 | 0                          | 0                               | 8                               | 0        |
| Bong            | 0                                       | 0         | 0        | 0                 | 0                          | 0                               | 21                              | 4        |
| Gbarpolu        | 0                                       | 0         | 0        | 0                 | 0                          | 0                               | 1                               | 0        |
| Grand Bassa     | 0                                       | 0         | 0        | 0                 | 0                          | 0                               | 21                              | 0        |
| Grand Gedeh     | 0                                       | 0         | 0        | 0                 | 0                          | 0                               | 2                               | 0        |
| Grand Kru       | 0                                       | 0         | 0        | 0                 | 0                          | 0                               | 14                              | 0        |
| Lofa            | 0                                       | 0         | 0        | 0                 | 0                          | 0                               | 17                              | 0        |
| Margibi         | 0                                       | 0         | 0        | 0                 | 0                          | 0                               | 12                              | 1        |
| Maryland        | 0                                       | 0         | 0        | 0                 | 0                          | 0                               | 16                              | 0        |
| Montserrado     | 0                                       | 0         | 0        | 0                 | 0                          | 0                               | 88                              | 1        |
| Nimba           | 0                                       | 0         | 0        | 0                 | 0                          | 0                               | 15                              | 0        |
| Rivercess       | 0                                       | 0         | 0        | 0                 | 0                          | 0                               | 3                               | 0        |
| River Gee       | 0                                       | 0         | 0        | 0                 | 0                          | 0                               | 10                              | 0        |
| Sinoe           | 0                                       | 0         | 0        | 0                 | 0                          | 0                               | 3                               | 0        |
| <b>NATIONAL</b> | <b>0</b>                                | <b>0</b>  | <b>0</b> | <b>0</b>          | <b>0</b>                   | <b>0</b>                        | <b>231</b>                      | <b>6</b> |



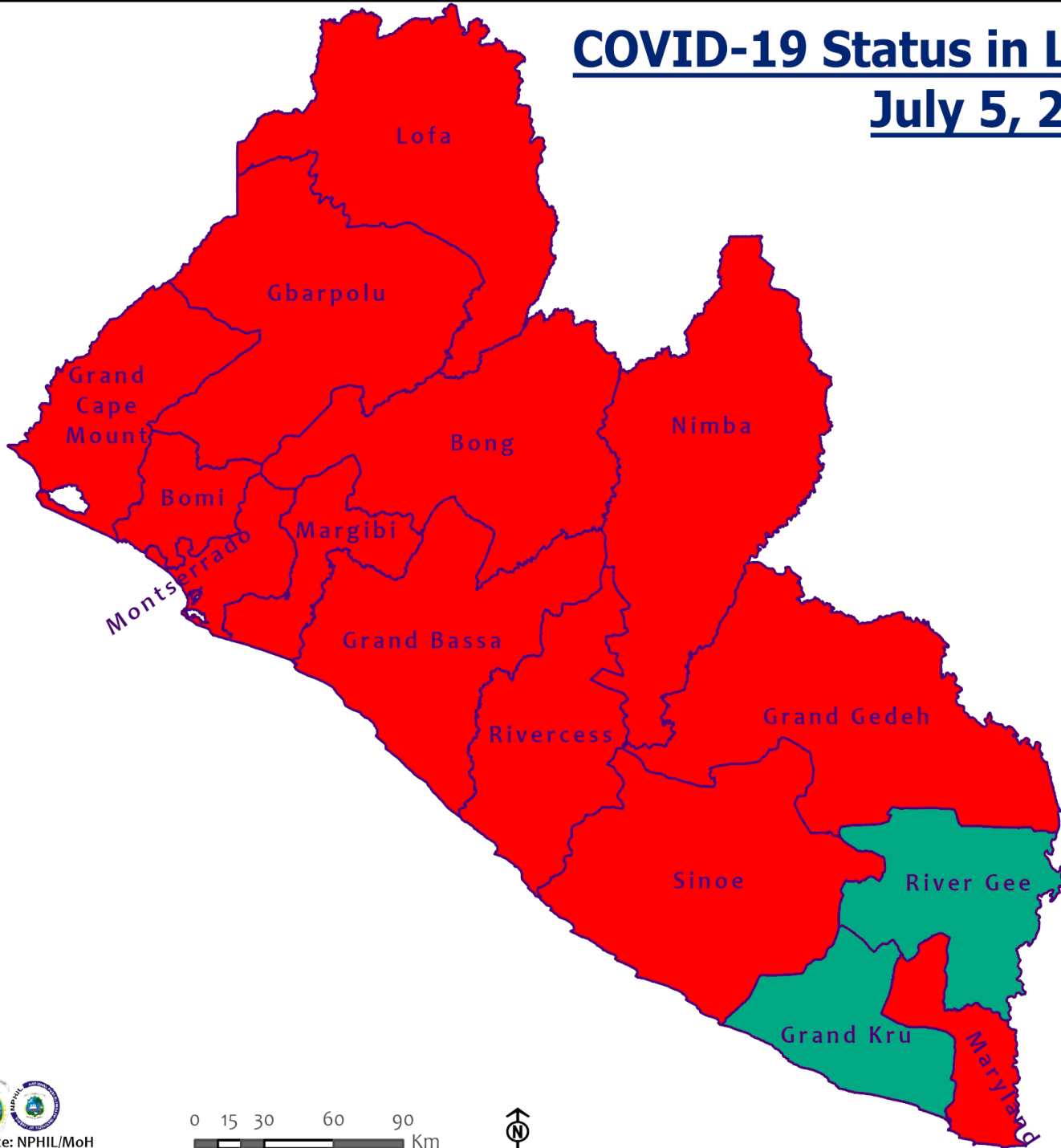
# Cadre Cases and Deaths by Health Care Workers (16 March 2020 – 5 July 2021)

| Health Care Worker Cadre         | Montserratado |          | Margibi   |          | Nimba     |          | River Gee |          | Sinoe    |          | Grand Kru |          | Gbarpolu |          | Bong      |          | Lofa      |          | Grand Bassa |          | Maryland  |          | Bomi     |          | Rivercess |          | Grand Gedeh |          | National (Total) |          |
|----------------------------------|---------------|----------|-----------|----------|-----------|----------|-----------|----------|----------|----------|-----------|----------|----------|----------|-----------|----------|-----------|----------|-------------|----------|-----------|----------|----------|----------|-----------|----------|-------------|----------|------------------|----------|
|                                  | Cases         | Deaths   | Cases     | Deaths   | Cases     | Deaths   | Cases     | Deaths   | Cases    | Deaths   | Cases     | Deaths   | Cases    | Deaths   | Cases     | Deaths   | Cases     | Deaths   | Cases       | Deaths   | Cases     | Deaths   | Cases    | Deaths   | Cases     | Deaths   | Cases       | Deaths   | Cases            | Deaths   |
| Doctors                          | 17            | 0        | 1         | 0        | 0         | 0        | 1         | 0        | 0        | 0        | 0         | 0        | 0        | 0        | 1         | 0        | 0         | 0        | 1           | 0        | 0         | 0        | 0        | 0        | 0         | 0        | 0           | 21       | 0                |          |
| Pharmacists                      | 4             | 0        | 0         | 0        | 0         | 0        | 0         | 0        | 0        | 0        | 0         | 0        | 0        | 0        | 0         | 0        | 0         | 0        | 0           | 0        | 0         | 0        | 0        | 0        | 0         | 0        | 4           | 0        |                  |          |
| Nurses                           | 23            | 1        | 2         | 0        | 2         | 0        | 5         | 0        | 0        | 0        | 2         | 0        | 1        | 1        | 12        | 1        | 8         | 0        | 5           | 0        | 1         | 0        | 1        | 0        | 0         | 0        | 62          | 3        |                  |          |
| Nurse Aid                        | 0             | 0        | 0         | 0        | 2         | 0        | 0         | 0        | 0        | 0        | 4         | 0        | 0        | 0        | 0         | 0        | 0         | 8        | 0           | 2        | 0         | 0        | 0        | 0        | 0         | 0        | 16          | 0        |                  |          |
| Midwife                          | 0             | 0        | 0         | 0        | 0         | 0        | 1         | 0        | 0        | 0        | 1         | 0        | 0        | 0        | 1         | 0        | 1         | 0        | 1           | 0        | 0         | 0        | 0        | 0        | 0         | 0        | 5           | 0        |                  |          |
| Physician Assistants             | 8             | 0        | 1         | 0        | 1         | 0        | 1         | 0        | 0        | 0        | 1         | 0        | 0        | 0        | 0         | 0        | 1         | 0        | 1           | 0        | 0         | 0        | 0        | 0        | 0         | 0        | 14          | 0        |                  |          |
| Lab Technician                   | 9             | 0        | 1         | 0        | 2         | 0        | 0         | 0        | 1        | 0        | 1         | 0        | 0        | 0        | 0         | 0        | 2         | 0        | 0           | 0        | 10        | 0        | 0        | 3        | 0         | 0        | 29          | 0        |                  |          |
| Environmental Health Technicians | 5             | 0        | 0         | 0        | 0         | 0        | 0         | 0        | 0        | 0        | 0         | 0        | 0        | 0        | 0         | 0        | 0         | 0        | 0           | 0        | 0         | 0        | 0        | 0        | 0         | 0        | 5           | 0        |                  |          |
| Dieticians                       | 0             | 0        | 7         | 1        | 0         | 0        | 0         | 0        | 0        | 0        | 0         | 0        | 0        | 0        | 0         | 0        | 0         | 0        | 0           | 0        | 0         | 0        | 0        | 0        | 0         | 0        | 7           | 1        |                  |          |
| Hospital Cleaner                 | 1             | 0        | 0         | 0        | 0         | 0        | 0         | 0        | 0        | 0        | 1         | 0        | 0        | 0        | 1         | 0        | 0         | 0        | 1           | 0        | 2         | 0        | 0        | 0        | 0         | 0        | 6           | 0        |                  |          |
| Others*                          | 21            | 0        | 0         | 0        | 7         | 0        | 2         | 0        | 2        | 0        | 4         | 0        | 0        | 0        | 4         | 1        | 5         | 0        | 4           | 0        | 1         | 0        | 5        | 0        | 0         | 2        | 0           | 57       | 1                |          |
| <b>Total:</b>                    | <b>88</b>     | <b>1</b> | <b>12</b> | <b>1</b> | <b>14</b> | <b>0</b> | <b>10</b> | <b>0</b> | <b>3</b> | <b>0</b> | <b>14</b> | <b>0</b> | <b>1</b> | <b>1</b> | <b>19</b> | <b>2</b> | <b>17</b> | <b>0</b> | <b>21</b>   | <b>0</b> | <b>16</b> | <b>0</b> | <b>6</b> | <b>0</b> | <b>3</b>  | <b>0</b> | <b>2</b>    | <b>0</b> | <b>226</b>       | <b>5</b> |

**\*Others include the following:**

***Radiologist, Microbiologist, Epidemiologist, Dispenser, Licensed Practical Nurse, Psychosocial worker, Hygienist, Logistician, Vaccinator, Ambulance Driver, Procurement Officer, Registrar, Accountant, Secretary, Hospital Administrator, Community Health Volunteer, GIS Specialist, EOC Coordinator, M&E Officer***

# COVID-19 Status in Liberia by County July 5, 2021



**Legend**

**County Status**

- Preparedness
- 28-Day Countdown
- Response



Data Source: NPHIL/MoH



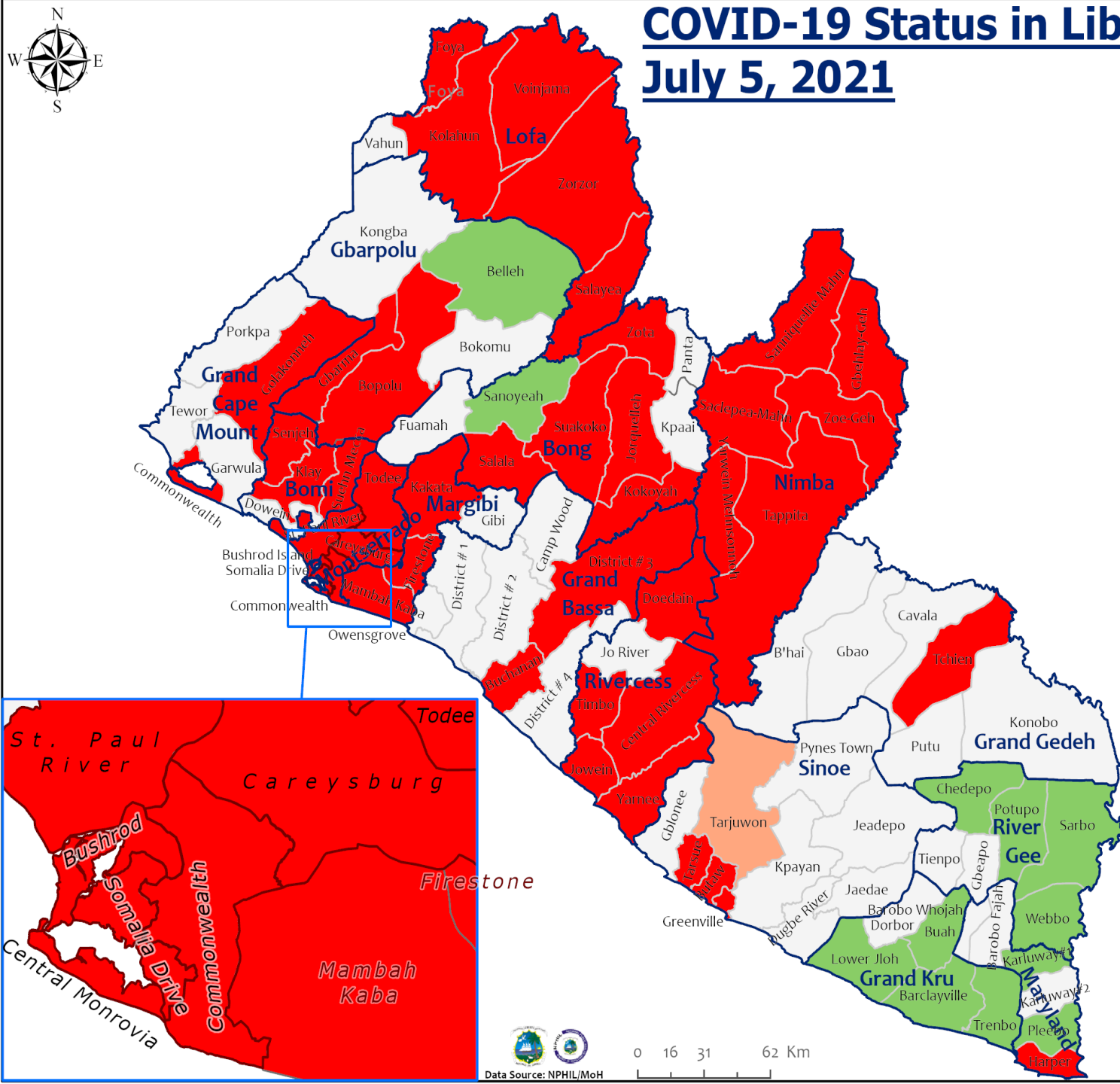
# COVID-19 Status in Liberia by District

## July 5, 2021



**Total Cases: 4,955**

| Affected Counties | Cumulative Cases |
|-------------------|------------------|
| Montserrado       | 4,037            |
| Margibi           | 225              |
| Nimba             | 108              |
| Bong              | 104              |
| Grand Bassa       | 91               |
| Lofa              | 88               |
| Boni              | 63               |
| Grand Cape Mount  | 55               |
| Maryland          | 46               |
| Gbarpolu          | 38               |
| River Gee         | 36               |
| Grand Kru         | 18               |
| Grand Gedeh       | 17               |
| Rivercess         | 15               |
| Sinoe             | 14               |

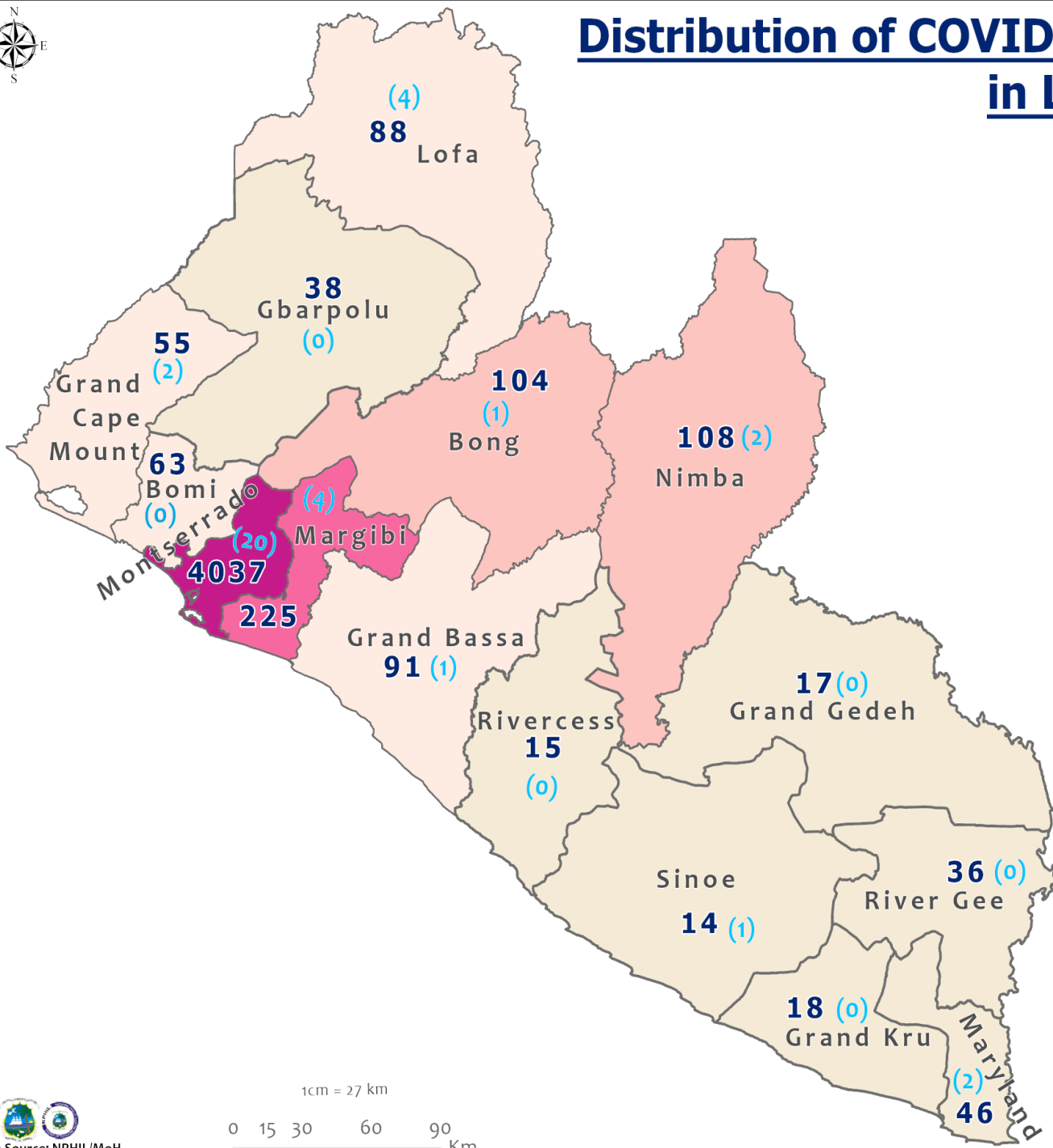
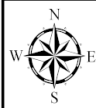


### Legend

#### District Status

- Never had a case
- First time with active case(s)
- With active cases(s)
- With recovered cases only

# Distribution of COVID-19 Cases by County in Liberia - July 5, 2021



Total cumulative cases:

**4,955**

Total new cases:

**37**

## Legend

Number of Cases

- 1 - 50
- 51 - 100
- 101 - 200
- 201 - 500
- 501 - 5000

Cumulative cases

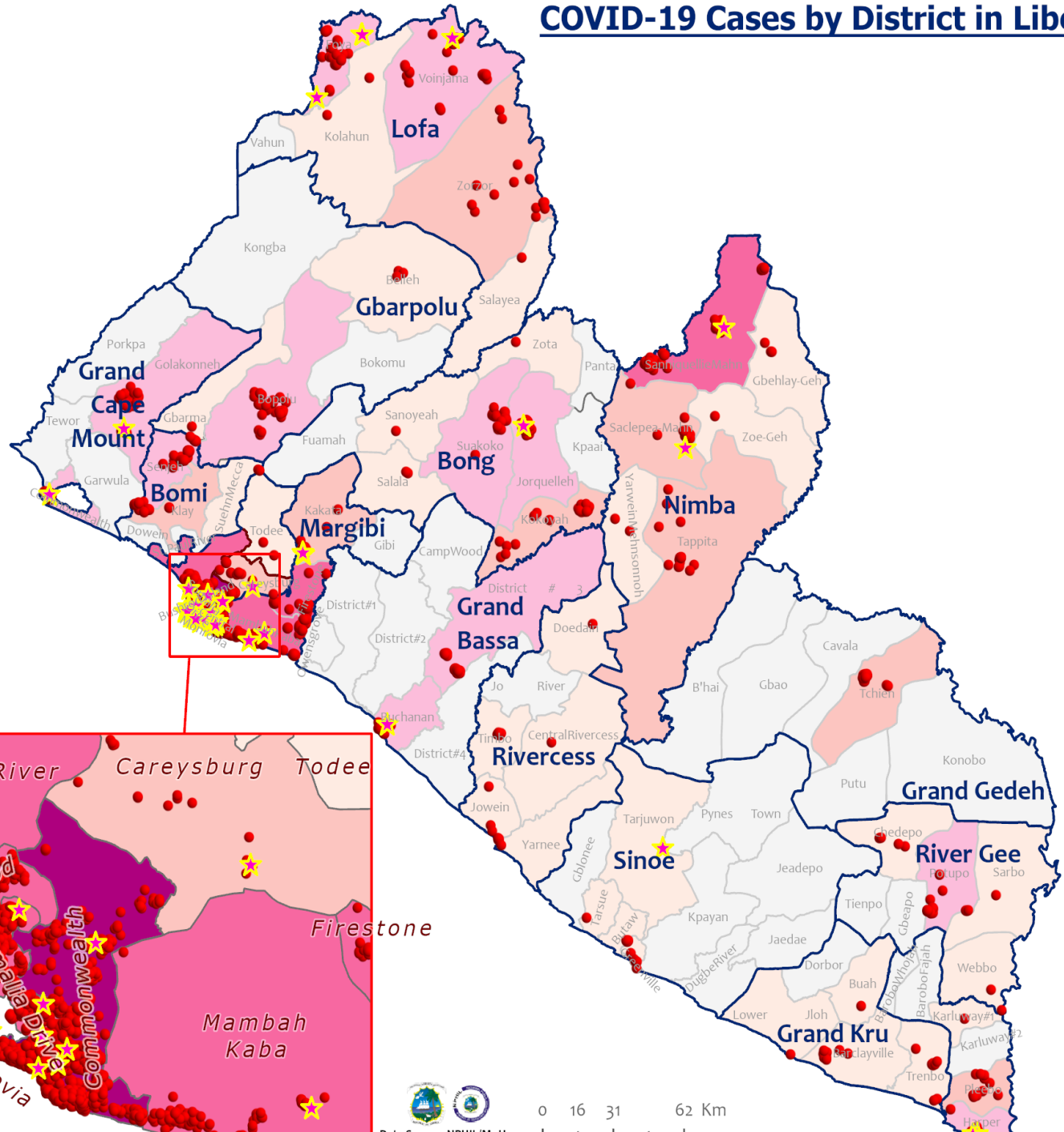
New cases

**0** (0)

1cm = 27 km

0 15 30 60 90 Km

# COVID-19 Cases by District in Liberia - July 5, 2021



**Total Cases: 4,955**

| Affected Counties | Cumulative Cases |
|-------------------|------------------|
| Montserrado       | 4,037            |
| Margibi           | 225              |
| Nimba             | 108              |
| Bong              | 104              |
| Grand Bassa       | 91               |
| Lofa              | 88               |
| Bomi              | 63               |
| Grand Cape Mount  | 55               |
| Maryland          | 46               |
| Gbarpolu          | 38               |
| River Gee         | 36               |
| Grand Kru         | 18               |
| Grand Gedeh       | 17               |
| Rivercess         | 15               |
| Sinoe             | 14               |

**Legend**

**Case Status**

- ★ New confirmed case
- Confirmed cases

**Cases / District**

- 0
- 1-10
- 11-20
- 21-50
- 51-500
- 501-1400
- 1401-2400

# Percent Distribution of COVID-19 Cases by Status in Liberia - 5 July 2021



**Total Cases: 4,955**

| Affected Counties | Cumulative Cases |
|-------------------|------------------|
| Montserrado       | 4,037            |
| Margibi           | 225              |
| Nimba             | 108              |
| Bong              | 104              |
| Grand Bassa       | 91               |
| Lofa              | 88               |
| Bomi              | 63               |
| Grand Cape Mount  | 55               |
| Maryland          | 46               |
| Gbarpolu          | 38               |
| River Gee         | 36               |
| Grand Kru         | 18               |
| Grand Gedeh       | 17               |
| Rivercess         | 15               |
| Sinoe             | 14               |

## Legend

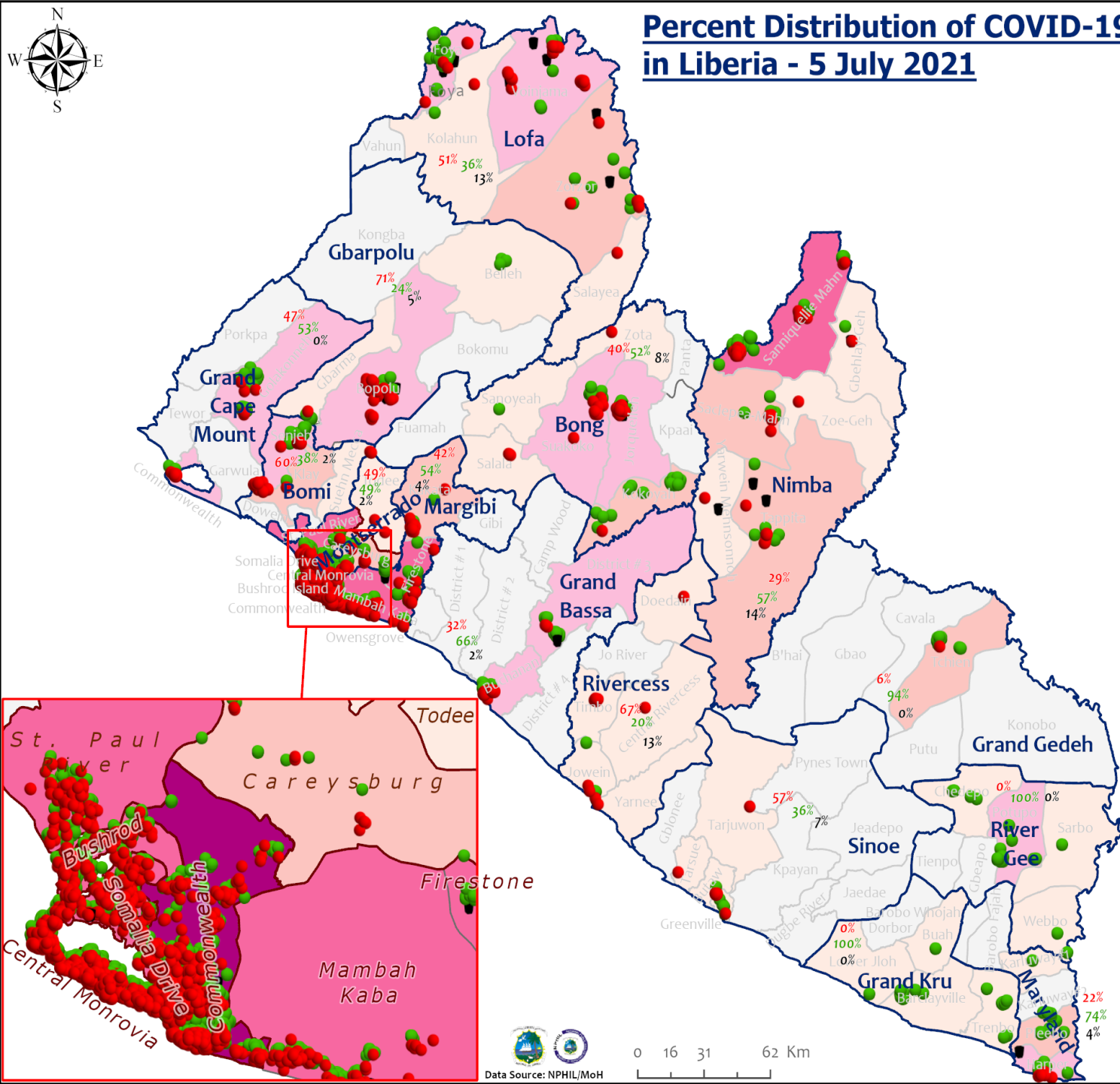
### Case Status

- Active
- Recovered
- Dead

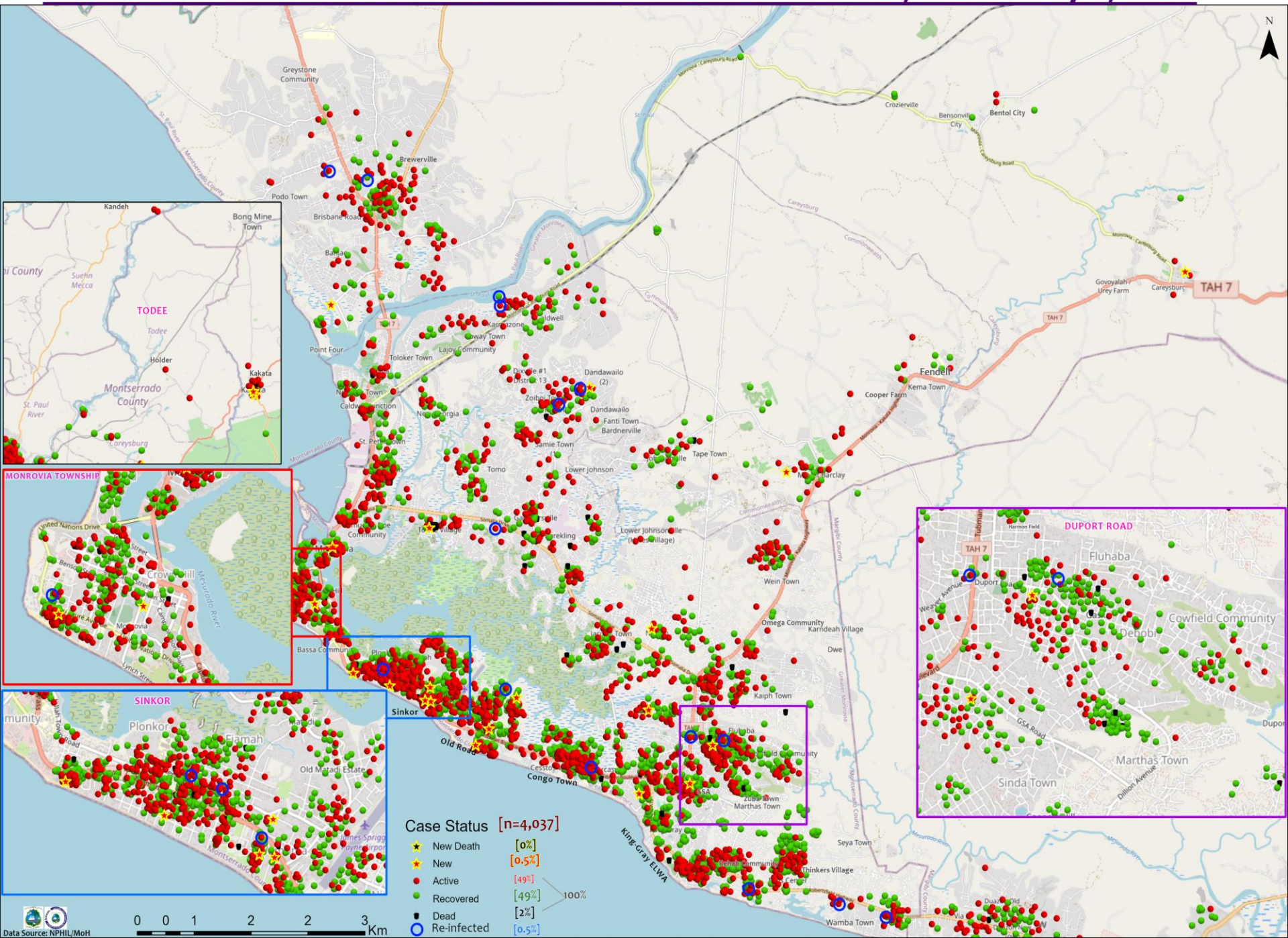
[44]  
[53%]  
[3%]

### Cases / District

- 0
- 1-10
- 11-20
- 21-50
- 51-500
- 501-1400
- 1401-2400



# Distribution of COVID-19 Cases in Montserrado Communities, Liberia July 5, 2021



Case Status [n=4,037]

- ★ New Death [0%]
- ★ New [0.5%]
- Active [49%]
- Recovered [49%]
- Dead [2%]
- Re-infected [0.5%]

100%

**Summary of confirmed, recovered, active, and dead cases by reporting counties, Liberia, 16 March 2020 – 5 July 2021**

| <b>County</b>    | <b>Confirmed Cases</b> |             | <b>Recovered Cases</b> |             | <b>Active Cases</b> | <b>Dead Cases</b> |            |
|------------------|------------------------|-------------|------------------------|-------------|---------------------|-------------------|------------|
|                  | New                    | Cum         | New                    | Cum         |                     | New               | Cum        |
| Bomi             | 0                      | <b>63</b>   | 0                      | <b>27</b>   | <b>35</b>           | 0                 | <b>1</b>   |
| Bong             | 1                      | <b>104</b>  | 0                      | <b>50</b>   | <b>46</b>           | 0                 | <b>8</b>   |
| Gbarpolu         | 0                      | <b>38</b>   | 0                      | <b>9</b>    | <b>27</b>           | 0                 | <b>2</b>   |
| Grand Bassa      | 1                      | <b>91</b>   | 0                      | <b>61</b>   | <b>29</b>           | 0                 | <b>1</b>   |
| Grand Cape Mount | 2                      | <b>55</b>   | 0                      | <b>20</b>   | <b>35</b>           | 0                 | <b>0</b>   |
| Grand Gedeh      | 0                      | <b>17</b>   | 0                      | <b>16</b>   | <b>1</b>            | 0                 | <b>0</b>   |
| Grand Kru        | 0                      | <b>18</b>   | 0                      | <b>18</b>   | <b>0</b>            | 0                 | <b>0</b>   |
| Lofa             | 4                      | <b>88</b>   | 0                      | <b>34</b>   | <b>43</b>           | 0                 | <b>11</b>  |
| Margibi          | 4                      | <b>225</b>  | 0                      | <b>107</b>  | <b>110</b>          | 0                 | <b>8</b>   |
| Maryland         | 2                      | <b>46</b>   | 0                      | <b>32</b>   | <b>12</b>           | 0                 | <b>2</b>   |
| Montserrado      | 20                     | <b>4037</b> | 5                      | <b>1989</b> | <b>1965</b>         | 0                 | <b>83</b>  |
| Nimba            | 2                      | <b>108</b>  | 0                      | <b>62</b>   | <b>31</b>           | 0                 | <b>15</b>  |
| Rivercess        | 0                      | <b>15</b>   | 0                      | <b>3</b>    | <b>10</b>           | 0                 | <b>2</b>   |
| River Gee        | 0                      | <b>36</b>   | 0                      | <b>36</b>   | <b>0</b>            | 0                 | <b>0</b>   |
| Sinoe            | 1                      | <b>14</b>   | 0                      | <b>5</b>    | <b>8</b>            | 0                 | <b>1</b>   |
| <b>National</b>  | <b>37</b>              | <b>4955</b> | <b>5</b>               | <b>2469</b> | <b>2352</b>         | <b>0</b>          | <b>134</b> |



## Home-Base Care of COVID-19 – July 5, 2021

| County        | New Admissions | Currently in Admissions | No. Followed-up (In-person/Phone) | Cumulative Admissions | New Recoveries | Cumulative Recoveries | Referrals to TU | Cumulative Referrals to TU | New Death | Cumulative Deaths |
|---------------|----------------|-------------------------|-----------------------------------|-----------------------|----------------|-----------------------|-----------------|----------------------------|-----------|-------------------|
| Montserratado | 54             | 411                     | 250                               | 1048                  | 5              | 608                   | 0               | 29                         | 0         | 0                 |
| Nimba         |                |                         |                                   | 0                     |                |                       |                 |                            |           |                   |
| Bong          |                |                         |                                   | 0                     |                |                       |                 |                            |           |                   |
| Maryland      |                |                         |                                   |                       |                |                       |                 |                            |           |                   |
| Cape Mount    |                |                         |                                   |                       |                |                       |                 |                            |           |                   |
| Lofa          |                |                         |                                   |                       |                |                       |                 |                            |           |                   |
| Margibi       |                |                         |                                   | 0                     |                |                       |                 |                            |           |                   |
| <b>Total:</b> | 54             | 411                     | 250                               | 1048                  | 5              | 608                   | 0               | 29                         | 0         | 0                 |

# Laboratory Samples Evaluated – 5 July 2021

| County                   | Sample Evaluated | New Positive | Repeat Positive | Initial Negative | Repeat Test Negative | Pending Lab Result |
|--------------------------|------------------|--------------|-----------------|------------------|----------------------|--------------------|
| Bomi                     | 1                | 0            | 0               | 1                | 0                    | 0                  |
| Bong                     | 6                | 1            | 0               | 5                | 0                    | 0                  |
| Gbarpolu                 | 5                | 0            | 1               | 4                | 0                    | 0                  |
| Grand Bassa              | 12               | 2            | 0               | 10               | 0                    | 0                  |
| Grand Cape Mount         | 9                | 1            | 0               | 8                | 0                    | 0                  |
| Grand Gedeh              | 3                | 0            | 0               | 3                | 0                    | 0                  |
| Grand Kru                | 1                | 0            | 0               | 1                | 0                    | 0                  |
| Lofa                     | 12               | 4            | 1               | 7                | 0                    | 0                  |
| Margibi                  | 33               | 4            | 0               | 29               | 0                    | 0                  |
| Maryland                 | 3                | 2            | 0               | 1                | 0                    | 0                  |
| Montserrado              | 472              | 20           | 1               | 451              | 0                    | 0                  |
| Nimba                    | 4                | 2            | 0               | 2                | 0                    | 0                  |
| Sinoe                    | 5                | 1            | 0               | 4                | 0                    | 0                  |
| <b>TOTAL</b>             | <b>566</b>       | <b>37</b>    | <b>3</b>        | <b>526</b>       | <b>0</b>             | <b>0</b>           |
| <b>Incoming Traveler</b> | 111              | 4            | 0               | 107              | 0                    | 0                  |
| <b>Outgoing Traveler</b> | 367              | 18           | 2               | 347              | 0                    | 0                  |
| <b>Voluntary</b>         | 79               | 14           | 1               | 64               | 0                    | 0                  |
| <b>Self Isolation</b>    | 3                | 0            | 0               | 3                | 0                    | 0                  |
| <b>Health facility</b>   | 6                | 1            | 0               | 5                | 0                    | 0                  |
| <b>NRL</b>               | 502              | 32           | 3               | 467              | 0                    | 0                  |
| <b>US-Embassy Lab</b>    | 4                | 0            | 0               | 4                | 0                    | 0                  |
| <b>UN Clinic Lab</b>     | 17               | 0            | 0               | 17               | 0                    | 0                  |
| <b>PREVAIL-JFK</b>       | 43               | 5            | 0               | 38               | 0                    | 0                  |

# Incoming Travelers Testing Positive for COVID-19 (May 1 – 5 July 2021)\*

| Country of embarkment | Cases     |
|-----------------------|-----------|
| Ghana                 | 12        |
| UAE                   | 5         |
| USA                   | 5         |
| Nigeria               | 4         |
| Pakistan              | 1         |
| Australia             | 1         |
| Lebanon               | 1         |
| Canada                | 1         |
| India                 | 1         |
| Others                | 12        |
| <b>Total</b>          | <b>43</b> |

| Occupation     | Cases     |
|----------------|-----------|
| Business       | 11        |
| Student        | 5         |
| PFM Consultant | 1         |
| Physician      | 1         |
| Diplomat       | 1         |
| Nurse Aide     | 1         |
| Retired        | 1         |
| Geologist      | 1         |
| Others         | 21        |
| <b>Total</b>   | <b>43</b> |

| Nationality  | Cases     |
|--------------|-----------|
| Liberian     | 16        |
| American     | 4         |
| Ghanaian     | 4         |
| Nigerian     | 3         |
| Indian       | 2         |
| Pakistani    | 1         |
| Lebanese     | 1         |
| Canadian     | 1         |
| Australian   | 1         |
| Others       | 10        |
| <b>Total</b> | <b>43</b> |

| Flight        | Cases     |
|---------------|-----------|
| Kenya Airways | 15        |
| ASKY          | 11        |
| SN Brussels   | 6         |
| AWA           | 4         |
| Air France    | 2         |
| Others        | 5         |
| <b>Total</b>  | <b>43</b> |

# Summary of COVID-19 Contact Tracing in Response Counties

| County           | New Contacts Line listed | Cumulative Contacts | No. of Health Care Workers as Contacts | Cumulative no. of Health Care Workers as contacts | Contacts became a case | Cumulative contacts that became a case | Contacts Completed 14 Days | Cumulative Contacts Completing 14 Days | Contacts Under Follow-up | Contacts lost to Follow-up |
|------------------|--------------------------|---------------------|--|---|------------------------|--|----------------------------|--|--------------------------|----------------------------|
| Montserrado      | 251                      | 8418                | 2                                      | 691   | 0                      | 211                                    | 26                         | 7231                                   | 1110                     | 6                          |
| Margibi          | 0                        | 480                 | 0                                      | 125   | 0                      | 42                                     | 0                          | 470                                    | 278                      | 0                          |
| Grand Bassa      | 0                        | 457                 | 5                                      | 145   | 0                      | 51                                     | 0                          | 410                                    | 28                       | 0                          |
| Sinoe            | 0                        | 191                 | 0                                      | 30  | 0                      | 1                                      | 0                          | 191                                    | 0                        | 0                          |
| Lofa             | 0                        | 758                 | 17                                     | 103   | 0                      | 34                                     | 0                          | 726                                    | 46                       | 0                          |
| Nimba            | 0                        | 613                 | 8                                      | 61  | 0                      | 25                                     | 0                          | 550                                    | 17                       | 0                          |
| Bong             | 0                        | 302                 | 31                                     | 70  | 0                      | 28                                     | 0                          | 300                                    | 60                       | 0                          |
| Gbarpolu         | 0                        | 87                  | 1                                      | 13  | 0                      | 8                                      | 0                          | 87                                     | 42                       | 0                          |
| Grand Cape Mount | 0                        | 49                  | 0                                      | 3   | 0                      | 4                                      | 0                          | 51                                     | 14                       | 0                          |
| RiverGee         | 0                        | 123                 | 0                                      | 13  | 0                      | 30                                     | 0                          | 123                                    | 0                        | 0                          |
| Maryland         | 0                        | 208                 | 0                                      | 28  | 0                      | 19                                     | 0                          | 136                                    | 7                        | 0                          |
| Bomi             | 0                        | 180                 | 18                                     | 35  | 0                      | 15                                     | 0                          | 177                                    | 67                       | 0                          |
| Rivercess        | 0                        | 102                 | 1                                      | 56  | 0                      | 0                                      | 0                          | 88                                     | 10                       | 0                          |
| Grand Kru        | 0                        | 333                 | 0                                      | 131   | 0                      | 17                                     | 0                          | 330                                    | 0                        | 0                          |
| Grand Gedeh      | 0                        | 163                 | 0                                      | 49  | 0                      | 6                                      | 0                          | 125                                    | 0                        | 0                          |
| <b>National</b>  | <b>251</b>               | <b>12464</b>        | <b>83</b>                              | <b>1553</b>                                       | <b>0</b>               | <b>491</b>                             | <b>26</b>                  | <b>10995</b>                           | <b>1679</b>              | <b>6</b>                   |

**Thank you for Listening**