



# **Liberia COVID-19 Daily Sitrep 483 (July 11, 2021)**

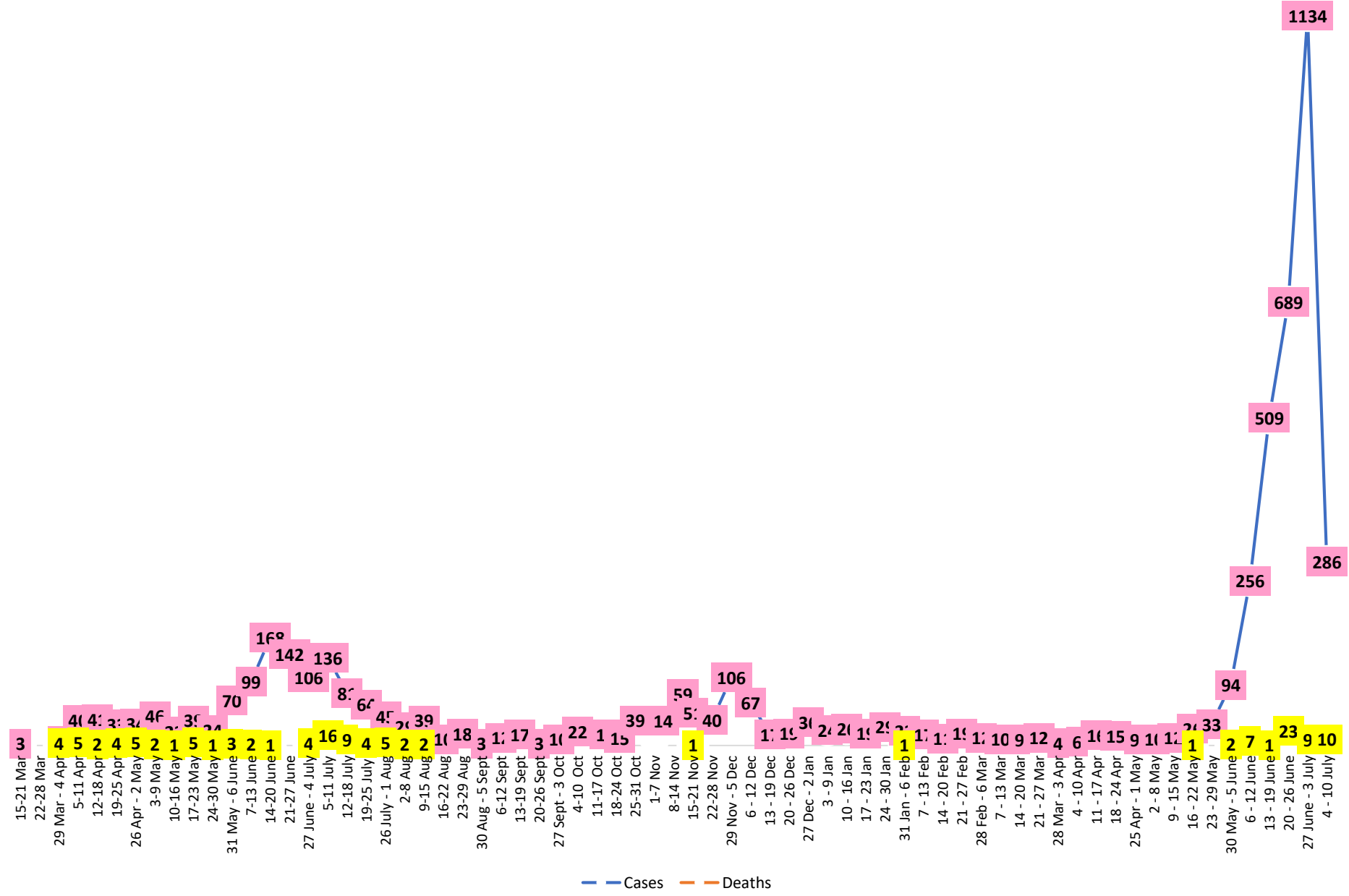
## Summary of COVID-19 Cases by Reporting County, Liberia, 16 March 2020 – 11 July 2021

County	Laboratory Confirmed Cases	Confirmed Cases on Contact List	Confirmed Cumulative Cases
<b>Bomi</b>	0	0	63
<b>Bong</b>	0	0	109
<b>Gbarpolu</b>	0	0	39
<b>Grand Bassa</b>	0	0	94
<b>Grand Cape Mount</b>	0	0	58
<b>Grand Kru</b>	0	0	18
<b>Grand Gedeh</b>	0	0	23
<b>Lofa</b>	0	0	96
<b>Margibi</b>	6	0	246
<b>Maryland</b>	0	0	50
<b>Montserrado</b>	<b>53</b>	<b>0</b>	<b>4232</b>
<b>Nimba</b>	0	0	121
<b>Rivercess</b>	0	0	15
<b>River Gee</b>	0	0	37
<b>Sinoe</b>	0	0	14
<b>NATIONAL</b>	<b>59</b>	<b>0</b>	<b>5215</b>

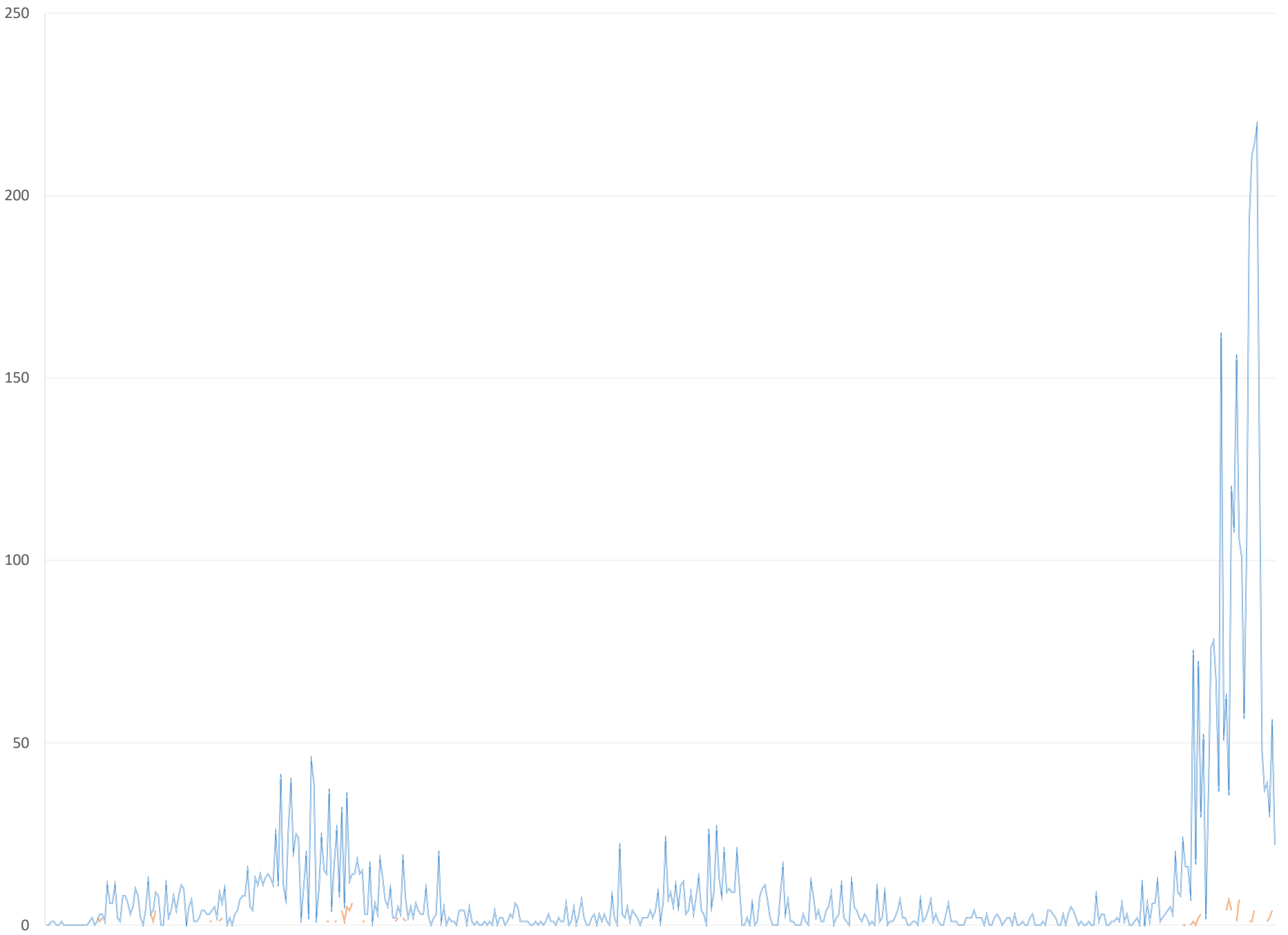
# Demographic Breakdown (Gender & Age) of Confirmed COVID-19 Cases (16 March 2020 – 11 June 2021)

County	<15 years		15 - 34		35 - 54		55+		All ages		Total Confirmed
	M	F	M	F	M	F	M	F	M	F	
Bomi	2	2	7	12	25	10	2	3	36	27	63
Bong	3	2	11	10	42	15	18	8	74	35	109
Gbarpolu	1	2	9	4	17	4	2	0	29	10	39
Grand Bassa	14	6	15	14	20	12	8	5	57	37	94
Grand Cape Mount	1	0	21	0	32	0	4	0	58	0	58
Grand Kru	0	0	2	5	4	5	2	0	8	10	18
Grand Gedeh	1	2	2	2	9	5	2	0	14	9	23
Lofa	11	6	14	11	26	9	14	5	65	31	96
Margibi	9	6	33	23	75	42	43	15	160	86	246
Maryland	2	0	12	7	16	6	3	4	33	17	50
<b>Montserrado</b>	94	93	861	556	1251	564	503	310	2709	1523	4232
Nimba	2	4	16	14	39	14	26	6	83	38	121
Rivercess	0	0	2	3	5	2	2	1	9	6	15
River Gee	0	0	5	3	19	5	5	0	29	8	37
Sinoe	0	0	1	0	11	1	0	1	12	2	14
<b>National</b>	<b>140</b>	<b>123</b>	<b>1011</b>	<b>664</b>	<b>1591</b>	<b>694</b>	<b>634</b>	<b>358</b>	<b>3376</b>	<b>1839</b>	<b>5215</b>

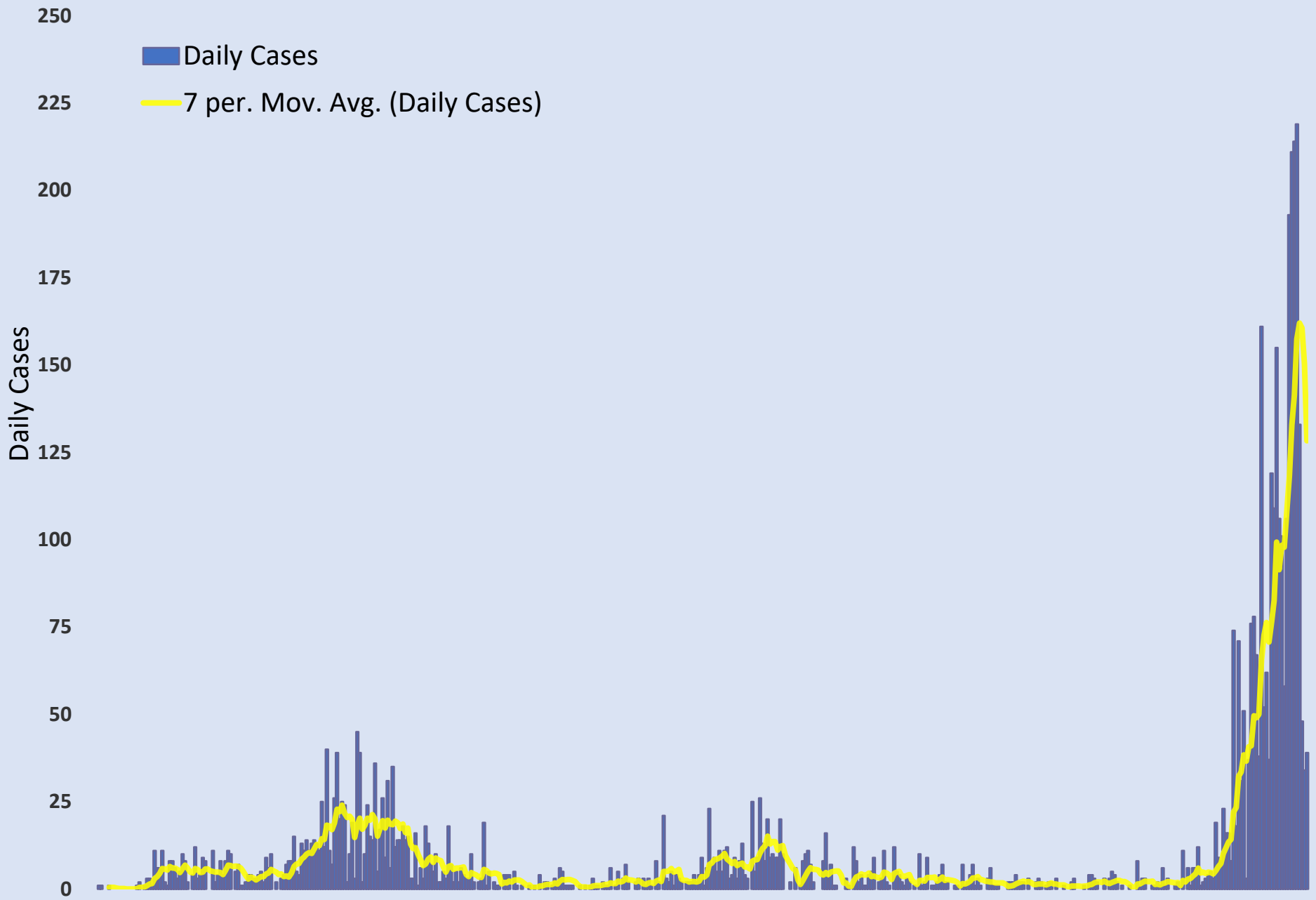
# COVID-19 WEEKLY EPI-CURVE



Daily Cases Daily Deaths



# EPI-Curve of Confirmed Cases nCOVID 19 Daily Cases



# Summary of COVID-19 Deaths by Reporting County, Liberia, 16 March 2020 – 11 July 2021

County	Now Suspected Deaths	COVID-19 Treatment Unit	Total in COVID-19 Treatment Unit	Health Facility	Total in Health Facility	Community	Total in Community	Confirmed Deaths on Contact List	Cumulative Deaths
Bomi	0	0	0	0	2	0	0	0	2
Bong	0	0	0	0	7	0	3	0	10
Gbarpolu	0	0	0	0	2	0	0	0	2
Grand Bassa	0	0	0	0	1	0	0	0	1
Grand Cape Mount	0	0	0	0	0	0	0	0	0
Grand Gedeh	0	0	0	0	0	0	0	0	0
Grand Kru	0	0	0	0	0	0	0	0	0
Lofa	0	0	0	0	6	0	5	0	11
Maryland	0	0	0	0	2	0	0	0	2
Margibi	0	0	2	0	6	0	0	0	8
Montserrado	0	2	31	0	38	0	18	0	87
Nimba	0	0	3	0	11	0	4	0	18
Rivercess	0	0	0	0	1	0	1	0	2
River Gee	0	0	0	0	0	0	0	0	0
Sinoe	0	0	0	0	1	0	0	0	1
<b>National</b>	<b>0</b>	<b>2</b>	<b>36</b>	<b>0</b>	<b>77</b>	<b>0</b>	<b>31</b>	<b>0</b>	<b>144</b>

# Daily and Cumulative Healthcare Worker (HCW) COVID-19 Cases and Deaths by County, Liberia, 16 March 2020 – 11 July 2021

County	DAILY REPORT						CUMULATIVE CASES (ALIVE & DEAD)	
	New Suspected & High Risk Cases (Alive)			New Suspect Death	Laboratory Confirmed Cases	Confirmed Cases on Contact List	Confirmed	Deaths
	Suspect	High Risk	Total					
Bomi	0	0	0	0	0	0	8	0
Bong	0	0	0	0	0	0	21	4
Gbarpolu	0	0	0	0	0	0	1	0
Grand Bassa	0	0	0	0	0	0	21	0
Grand Gedeh	0	0	0	0	0	0	2	0
Grand Kru	0	0	0	0	0	0	14	0
Lofa	0	0	0	0	0	0	17	0
Margibi	0	0	0	0	0	0	12	1
Maryland	0	0	0	0	0	0	16	0
Montserrado	0	0	0	0	0	0	88	1
Nimba	0	0	0	0	0	0	15	0
Rivercess	0	0	0	0	0	0	3	0
River Gee	0	0	0	0	0	0	10	0
Sinoe	0	0	0	0	0	0	3	0
<b>NATIONAL</b>	<b>0</b>	<b>0</b>	<b>0</b>	<b>0</b>	<b>0</b>	<b>0</b>	<b>231</b>	<b>6</b>



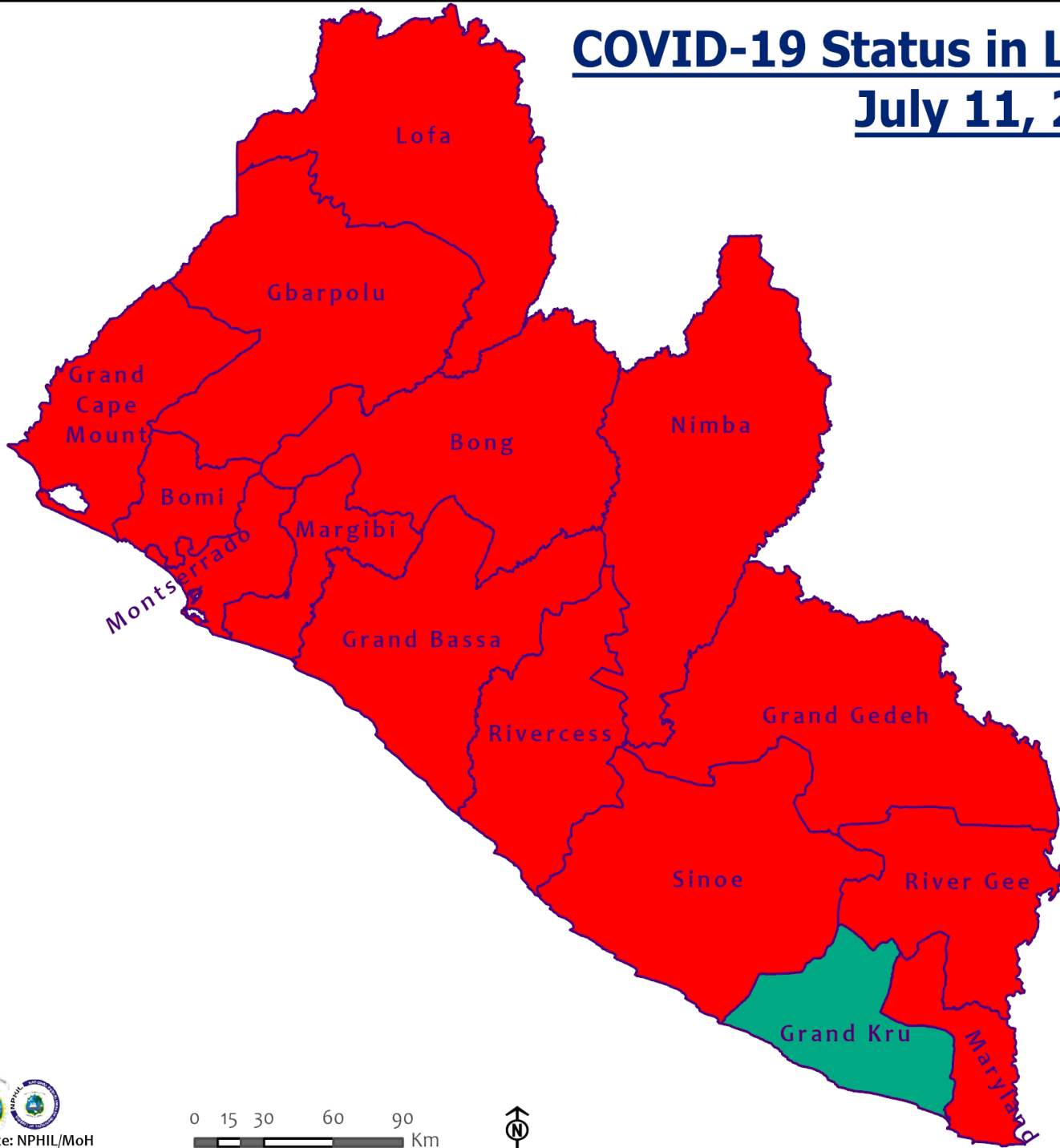
# Cadre Cases and Deaths by Health Care Workers (16 March 2020 – 11 July 2021)

Health Care Worker Cadre	Montserratado		Margibi		Nimba		River Gee		Sinoe		Grand Kru		Gbarpolu		Bong		Lofa		Grand Bassa		Maryland		Bomi		Rivercess		Grand Gedeh		National (Total)	
	Cases	Deaths	Cases	Deaths	Cases	Deaths	Cases	Deaths	Cases	Deaths	Cases	Deaths	Cases	Deaths	Cases	Deaths	Cases	Deaths	Cases	Deaths	Cases	Deaths	Cases	Deaths	Cases	Deaths	Cases	Deaths	Cases	Deaths
Doctors	17	0	1	0	0	0	1	0	0	0	0	0	0	0	1	0	0	0	1	0	0	0	0	0	0	0	0	21	0	
Pharmacists	4	0	0	0	0	0	0	0	0	0	0	0	0	0	0	0	0	0	0	0	0	0	0	0	0	0	4	0		
Nurses	23	1	2	0	2	0	5	0	0	0	2	0	1	1	12	1	8	0	5	0	1	0	1	0	0	0	62	3		
Nurse Aid	0	0	0	0	2	0	0	0	0	0	4	0	0	0	0	0	0	0	8	0	2	0	0	0	0	0	16	0		
Midwife	0	0	0	0	0	0	1	0	0	0	1	0	0	0	1	0	1	0	1	0	0	0	0	0	0	0	5	0		
Physician Assistants	8	0	1	0	1	0	1	0	0	0	1	0	0	0	0	0	1	0	1	0	0	0	0	0	0	0	14	0		
Lab Technician	9	0	1	0	2	0	0	0	1	0	1	0	0	0	0	0	2	0	0	0	10	0	0	0	3	0	29	0		
Environmental Health Technicians	5	0	0	0	0	0	0	0	0	0	0	0	0	0	0	0	0	0	0	0	0	0	0	0	0	0	5	0		
Dieticians	0	0	7	1	0	0	0	0	0	0	0	0	0	0	0	0	0	0	0	0	0	0	0	0	0	0	7	1		
Hospital Cleaner	1	0	0	0	0	0	0	0	0	0	1	0	0	0	1	0	0	0	1	0	2	0	0	0	0	0	6	0		
Others*	21	0	0	0	7	0	2	0	2	0	4	0	0	0	4	1	5	0	4	0	1	0	5	0	0	2	57	1		
<b>Total:</b>	<b>88</b>	<b>1</b>	<b>12</b>	<b>1</b>	<b>14</b>	<b>0</b>	<b>10</b>	<b>0</b>	<b>3</b>	<b>0</b>	<b>14</b>	<b>0</b>	<b>1</b>	<b>1</b>	<b>19</b>	<b>2</b>	<b>17</b>	<b>0</b>	<b>21</b>	<b>0</b>	<b>16</b>	<b>0</b>	<b>6</b>	<b>0</b>	<b>3</b>	<b>0</b>	<b>2</b>	<b>0</b>	<b>226</b>	<b>5</b>

*\*Others include the following:*

*Radiologist, Microbiologist, Epidemiologist, Dispenser, Licensed Practical Nurse, Psychosocial worker, Hygienist, Logistician, Vaccinator, Ambulance Driver, Procurement Officer, Registrar, Accountant, Secretary, Hospital Administrator, Community Health Volunteer, GIS Specialist, EOC Coordinator, M&E Officer*

# COVID-19 Status in Liberia by County July 11, 2021



**Legend**

**County Status**

- Preparedness
- 28-Day Countdown
- Response



0 15 30 60 90 Km



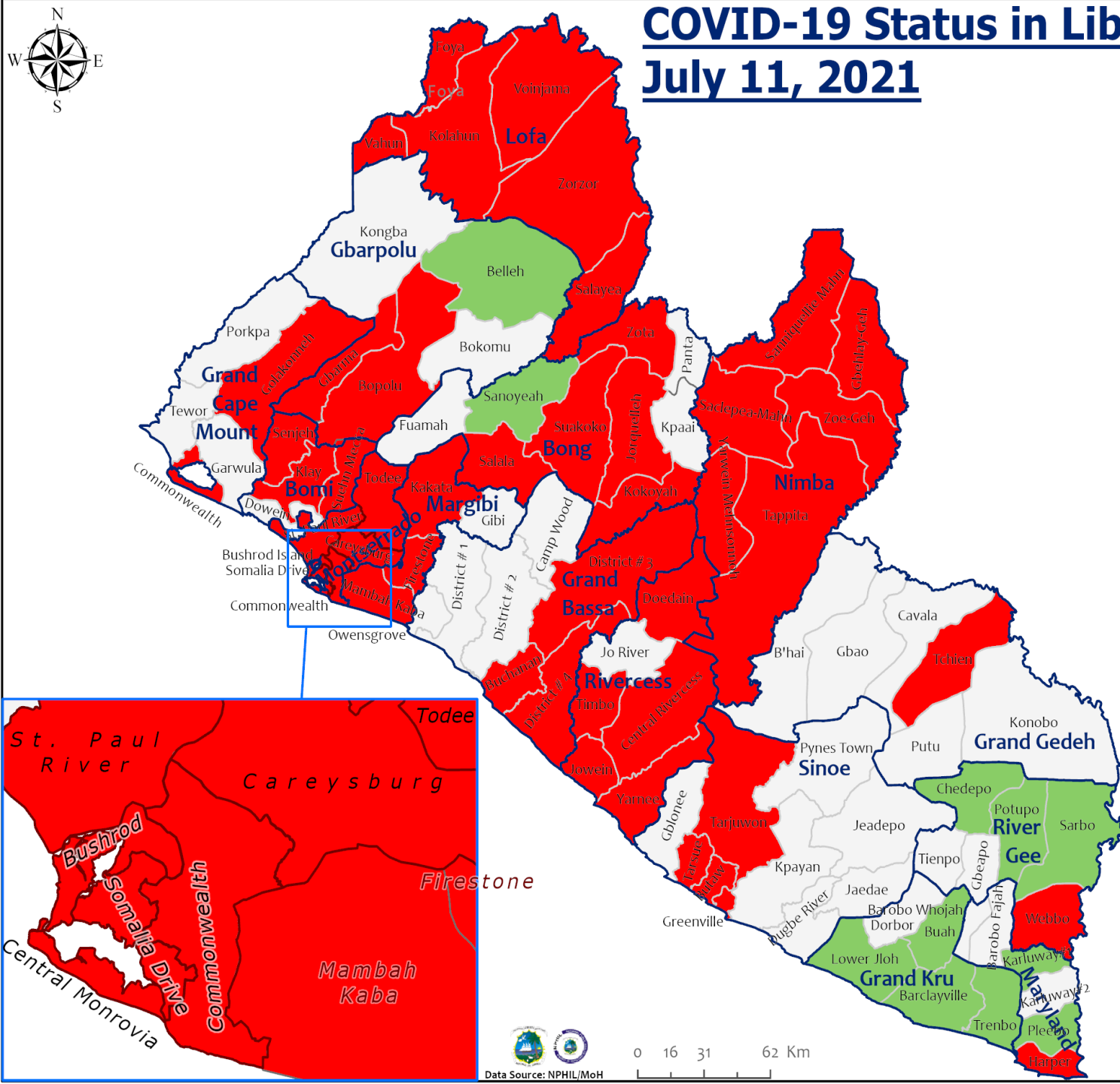
# COVID-19 Status in Liberia by District

## July 11, 2021



**Total Cases: 5,215**

Affected Counties	Cumulative Cases
Montserrado	4,232
Margibi	246
Nimba	121
Bong	109
Lofa	96
Grand Bassa	94
Bomi	63
Grand Cape Mount	58
Maryland	50
Gbarpolu	39
River Gee	37
Grand Gedeh	23
Grand Kru	18
Rivercess	15
Sinoe	14

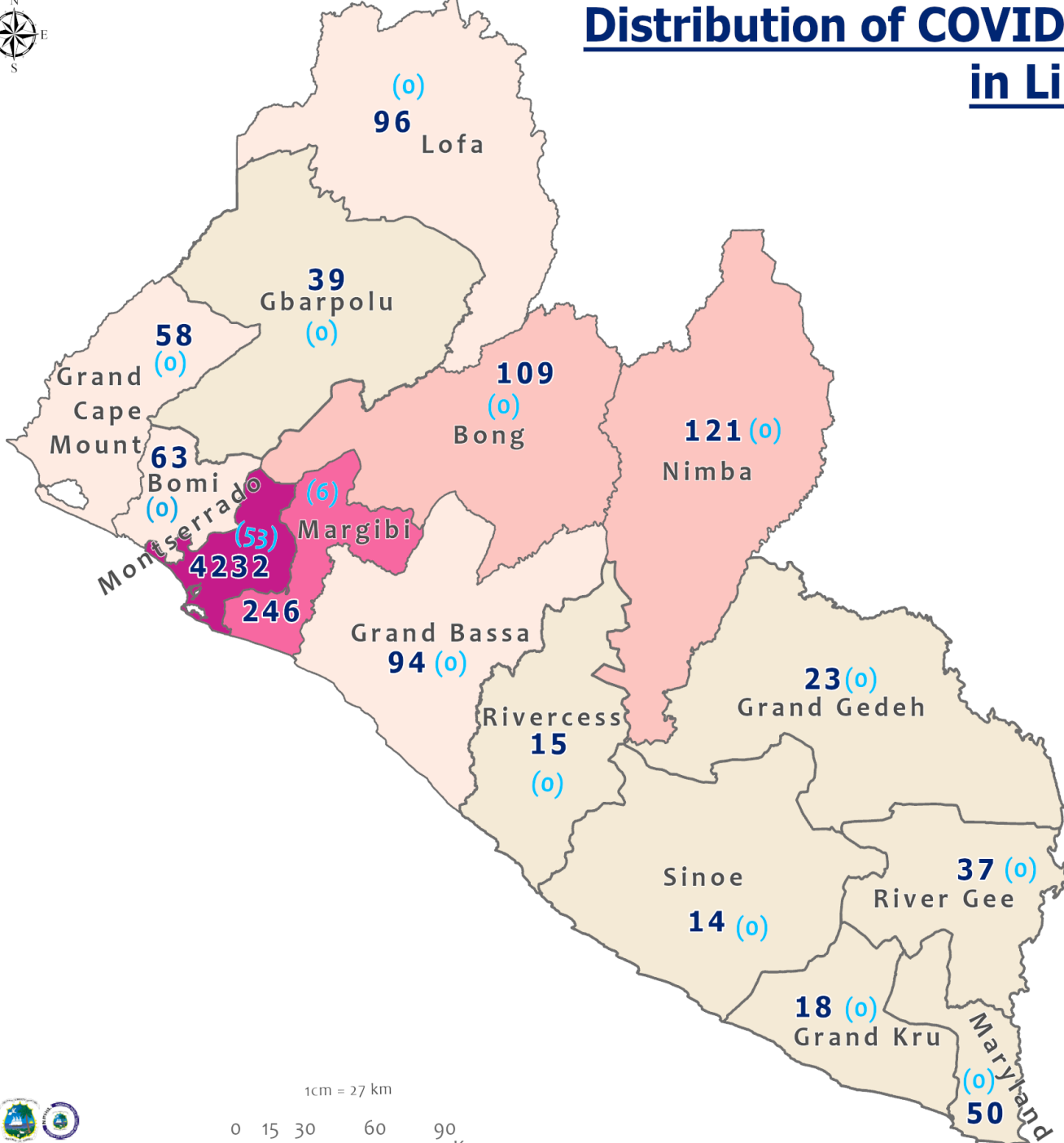


### Legend

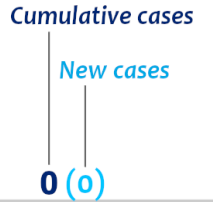
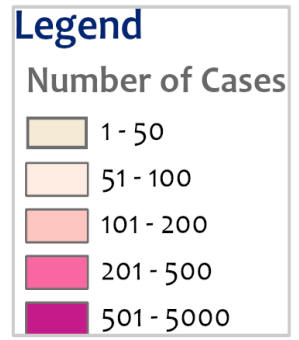
#### District Status

- Never had a case
- Back from recovery or first time with active case(s)
- With active cases(s)
- With recovered cases only

# Distribution of COVID-19 Cases by County in Liberia - July 11, 2021



Total cumulative cases:  
**5,215**  
 Total new cases:  
**59**







## Home-Base Care of COVID-19 – July 11, 2021

County	New Admissions	Currently in Admissions	No. Followed-up (In-person/Phone)	Cumulative Admissions	New Recoveries	Cumulative Recoveries	Referrals to TU	Cumulative Referrals to TU	New Death	Cumulative Deaths
Montserratado	0	335	220	1170	13	806	0	29	0	0
Nimba				0						
Bong				0						
Maryland										
Cape Mount										
Lofa										
Margibi				0						
<b>Total:</b>	0	335	220	1170	13	806	0	29	0	0

# Laboratory Samples Evaluated – 11 July 2021

<b>County</b>	<b>Sample Evaluated</b>	<b>New Positive</b>	<b>Repeat Positive</b>	<b>Initial Negative</b>	<b>Repeat Test Negative</b>	<b>Pending Lab Result</b>
<b>Grand Bassa</b>	2	0	0	2	0	0
<b>Grand Cape Mount</b>	3	0	0	3	0	0
<b>Margibi</b>	10	6	2	2	0	0
<b>Montserrado</b>	181	53	11	114	0	6
<b>Nimba</b>	2	0	0	1	0	1
<b>Sinoe</b>	1	0	0	0	0	1
<b>TOTAL</b>	<b>202</b>	<b>59</b>	<b>13</b>	<b>122</b>	<b>0</b>	<b>8</b>
<b> </b>						
<b>Outgoing Traveler</b>	131	55	12	60	0	4
<b>Voluntary</b>	64	3	1	56	0	4
<b>Incoming traveler*</b>	4	1	0	3	0	0
<b> </b>						
<b>NRL</b>	199	59	13	122	0	8
<b>US-Embassy Lab</b>	3	0	0	3	0	0



# Incoming Travelers Testing Positive for COVID-19 (May 1 – 11 July 2021)\*

Country of embarkment	Cases
Ghana	12
UAE	5
USA	5
Nigeria	4
Pakistan	1
Australia	1
Lebanon	1
Canada	1
India	1
Others	12
<b>Total</b>	<b>43</b>

Occupation	Cases
Business	11
Student	5
PFM Consultant	1
Physician	1
Diplomat	1
Nurse Aide	1
Retired	1
Geologist	1
Others	21
<b>Total</b>	<b>43</b>

Nationality	Cases
Liberian	16
American	4
Ghanaian	4
Nigerian	3
Indian	2
Pakistani	1
Lebanese	1
Canadian	1
Australian	1
Others	10
<b>Total</b>	<b>43</b>

Flight	Cases
Kenya Airways	15
ASKY	11
SN Brussels	6
AWA	4
Air France	2
Others	5
<b>Total</b>	<b>43</b>

# Summary of COVID-19 Contact Tracing in Response Counties

County	New Contacts Line listed	Cumulative Contacts	No. of Health Care Workers as Contacts	Cumulative no. of Health Care Workers as contacts	Contacts became a case	Cumulative contacts that became a case	Contacts Completed 14 Days	Cumulative Contacts Completing 14 Days	Contacts Under Follow-up	Contacts lost to Follow-up
Montserrado	0	8832	0	691	0	211	0	7749	1085	6
Margibi	0	480	0	125	0	42	0	482	266	0
Grand Bassa	0	457	5	145	0	51	0	410	28	0
Sinoe	0	191	0	30	0	1	0	191	0	0
Lofa	0	758	17	103	0	34	0	726	46	0
Nimba	0	613	8	61	0	25	0	550	48	0
Bong	0	302	31	70	0	28	0	300	60	0
Gbarpolu	0	87	1	13	0	8	0	87	42	0
Grand Cape Mount	0	49	0	3	0	4	0	51	14	0
RiverGee	0	123	0	13	0	30	0	123	0	0
Maryland	0	208	0	28	0	19	0	136	7	0
Bomi	0	180	18	35	0	15	0	177	91	0
Rivercess	0	102	1	56	0	0	0	88	10	0
Grand Kru	0	333	0	131	0	17	0	330	0	0
Grand Gedeh	0	163	0	49	0	6	0	125	0	0
<b>National</b>	<b>0</b>	<b>12878</b>	<b>81</b>	<b>1553</b>	<b>0</b>	<b>491</b>	<b>0</b>	<b>11525</b>	<b>1697</b>	<b>6</b>

**Thank you for Listening**