



# **Liberia COVID-19 Daily Sitrep 504 (August 1, 2021)**

# Summary of COVID-19 Cases by Reporting County, Liberia, 16 March 2020 – 1 August 2021

County	Laboratory Confirmed Cases	Confirmed Cases on Contact List	Confirmed Cumulative Cases
Bomi	0	0	61
Bong	0	0	113
Gbarpolu	0	0	39
Grand Bassa	0	0	95
Grand Cape Mount	0	0	52
Grand Kru	0	0	22
Grand Gedeh	0	0	24
Lofa	0	0	150
Margibi	0	0	198
Maryland	0	0	45
Montserrado	<b>0</b>	0	<b>4466</b>
Nimba	0	0	128
Rivercess	0	0	16
River Gee	0	0	38
Sinoe	0	0	12
<b>NATIONAL</b>	<b>0</b>	<b>0</b>	<b>5459</b>

# Summary of Cases by Ag RDT August 1, 2021

County	Tests done by Ag RDTs					
	New Tests	Cumulative Tests	New Positives	Cumulative Positives	New Negatives	Cumulative Negatives
Bomi	0					
Bong	0					
Gbarpolu	0					
Grand Bassa	0					
Grand Cape Mt	0					
Grand Gedeh	0					
Grand Kru	0					
Lofa	0					
Margibi	0					
Maryland	0					
Montserrado	0					
Nimba	1					
Rivercess	0					
River Gee	0					
Sinoe	0					
Incoming (RIA)	0					
Outgoing (Union)	0					
<b>Total</b>	<b>1</b>	<b>0</b>	<b>0</b>	<b>0</b>	<b>0</b>	<b>0</b>

# Summary of COVID-19 Deaths by Reporting County, Liberia, 16 March 2020 – 1 August 2021

County	ew Suspected Deaths	COVID-19 Treatment Unit	Total in COVID-19 Treatment Unit	Health Facility	Total in Health Facility	Community	Total in Community	Confirmed Deaths on Contact List	Cumulative Deaths
Bomi	0	0	0	0	2	0	0	0	2
Bong	0	0	4	0	9	0	3	0	16
Gbarpolu	0	0	0	0	2	0	0	0	2
Grand Bassa	0	0	0	0	5	0	0	0	5
Grand Cape Mount	0	0	0	0	0	0	0	0	0
Grand Gedeh	0	0	0	0	0	0	0	0	0
Grand Kru	0	0	0	0	0	0	0	0	0
Lofa	0	0	2	0	10	0	9	0	21
Maryland	0	0	0	0	4	0	0	0	4
Margibi	0	0	2	0	5	0	0	0	7
Montserrado	0	0	42	0	69	0	18	0	129
Nimba	0	0	6	1	19	0	4	0	29
Rivercess	0	0	0	0	2	0	1	0	3
River Gee	0	0	0	0	0	0	0	0	0
Sinoe	0	0	0	0	2	0	0	0	2
<b>National</b>	<b>0</b>	<b>0</b>	<b>56</b>	<b>1</b>	<b>129</b>	<b>0</b>	<b>35</b>	<b>0</b>	<b>220</b>

# Daily and Cumulative Healthcare Worker (HCW) COVID-19 Cases and Deaths by County, Liberia, 16 March 2020 – 1 August 2021

County	New Suspected & High Risk Cases (Alive)			New Suspect Death	Laboratory Confirmed Cases	Confirmed Cases on Contact List	CUMULATIVE CASES (ALIVE & DEAD)	
	Suspect	High Risk	Total				Confirmed	Deaths
Bomi	0	0	0	0	0	0	15	0
Bong	0	0	0	0	0	0	21	4
Gbarpolu	0	0	0	0	0	0	1	1
Grand Bassa	0	0	0	0	0	0	24	0
Grand Gedeh	0	0	0	0	0	0	2	0
Grand Kru	0	0	0	0	0	0	14	0
Grand Cape Mount	0	0	0	0	0	0	0	0
Lofa	0	0	0	0	0	0	28	0
Margibi	0	0	0	0	0	0	12	1
Maryland	0	0	0	0	0	0	17	0
Montserrado	0	0	0	0	0	0	145	2
Nimba	0	0	0	0	0	0	30	0
Rivercess	0	0	0	0	0	0	6	0
River Gee	0	0	0	0	0	0	10	0
Sinoe	0	0	0	0	0	0	3	0
<b>NATIONAL</b>	<b>0</b>	<b>0</b>	<b>0</b>	<b>0</b>	<b>0</b>	<b>0</b>	<b>328</b>	<b>8</b>

# Cadre Cases and Deaths by Health Care Workers (16 March 2020 – 1 August 2021)

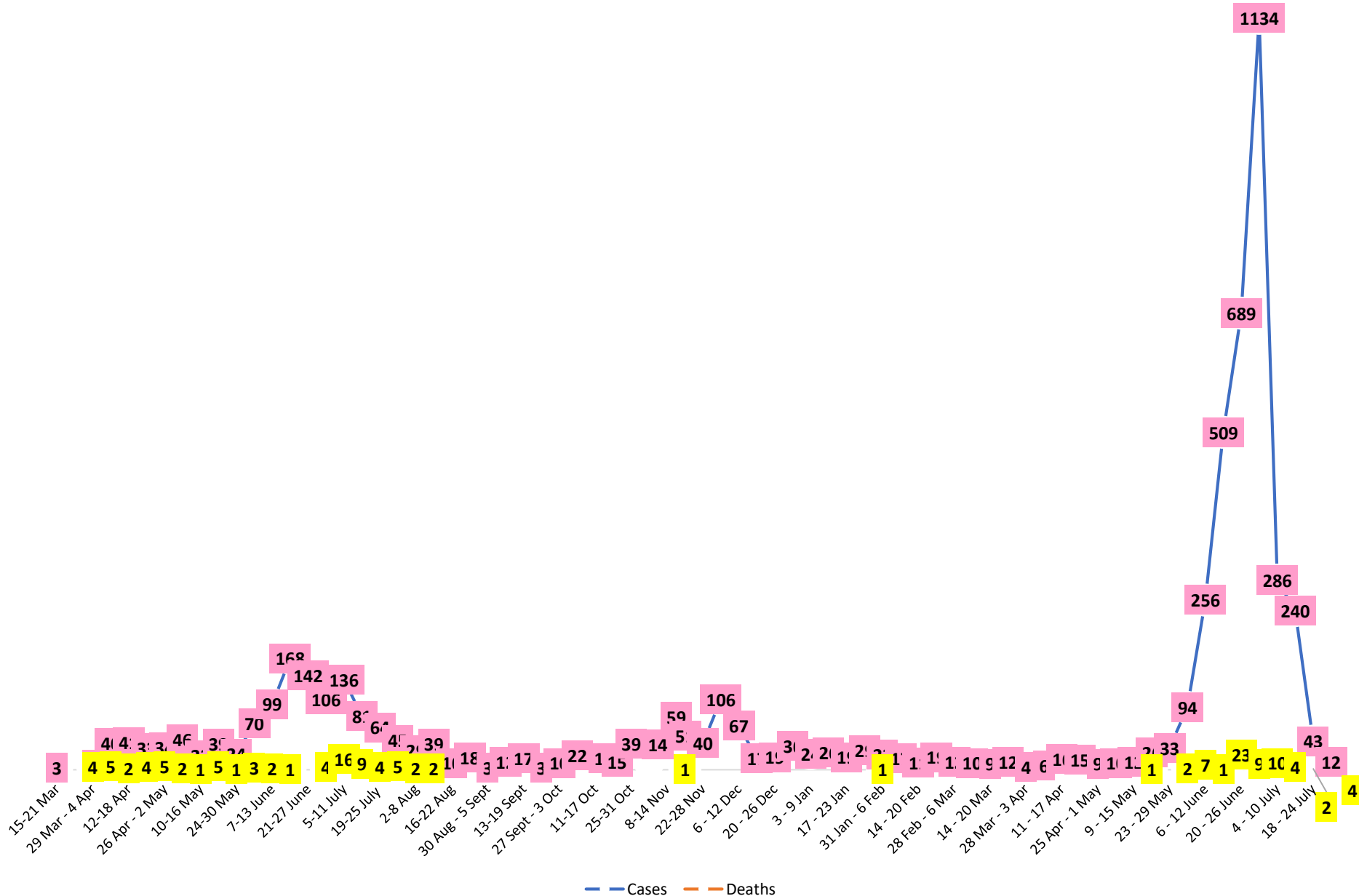
Health Care Worker Cadre	Montserrat		Margibi		Nimba		River Gee		Sinoe		Grand Kru		Gbarpolu		Bong		Lofa		Grand Bassa		Maryland		Bomi		Rivercess		Grand Cape Mount		Grand Gedeh		(Total)
	Cases	Deaths	Cases	Deaths	Cases	Deaths	Cases	Deaths	Cases	Deaths	Cases	Deaths	Cases	Deaths	Cases	Deaths	Cases	Deaths	Cases	Deaths	Cases	Deaths	Cases	Deaths	Cases	Deaths	Cases	Deaths	Cases	Deaths	
Doctors	24	0	1	0	5	0	1	0	0	0	0	0	0	0	2	0	0	0	2	0	1	0	0	0	0	0	0	0	0	0	36
Pharmacists	7	0	0	0	0	0	0	0	0	0	0	0	0	0	0	0	0	0	0	0	0	0	0	0	0	0	0	0	0	0	7
Nurses	49	1	2	0	4	0	7	0	0	0	2	0	1	1	15	4	10	0	16	0	7	0	5	0	0	0	0	1	0	119	
Nurse Aid	0	0	0	0	10	0	0	0	0	0	4	0	0	0	0	7	0	3	0	0	0	5	0	0	0	0	0	0	0	29	
Midwife	0	0	0	0	0	0	1	0	0	0	1	0	0	0	0	0	0	0	0	0	0	1	0	0	0	0	0	0	0	3	
Physician Assistants	10	1	1	0	0	0	1	0	0	0	1	0	0	0	0	0	0	0	0	0	0	0	0	0	0	0	0	0	0	13	
Lab Technician	11	0	1	0	2	0	0	0	1	0	1	0	0	0	4	0	2	0	0	0	9	0	1	0	3	0	0	0	0	35	
Environmental Health Technicians	5	0	0	0	0	0	0	0	0	0	0	0	0	0	0	0	0	0	0	0	0	0	0	0	0	0	0	0	0	5	
Dieticians	0	0	7	1	1	0	0	0	0	0	0	0	0	0	0	0	0	1	0	0	0	0	0	0	0	0	0	0	0	9	
Hospital Cleaner	1	0	0	0	0	0	0	0	0	0	1	0	0	0	0	0	6	0	1	0	0	1	0	2	0	0	0	0	0	12	
Others*	38	0	0	0	8	0	0	0	2	0	4	0	0	0	0	0	3	0	1	0	0	2	0	1	0	0	1	0	60		
<b>Total:</b>	<b>145</b>	<b>2</b>	<b>12</b>	<b>1</b>	<b>30</b>	<b>0</b>	<b>10</b>	<b>0</b>	<b>3</b>	<b>0</b>	<b>14</b>	<b>0</b>	<b>1</b>	<b>1</b>	<b>21</b>	<b>4</b>	<b>28</b>	<b>0</b>	<b>24</b>	<b>0</b>	<b>17</b>	<b>0</b>	<b>15</b>	<b>0</b>	<b>6</b>	<b>0</b>	<b>0</b>	<b>0</b>	<b>2</b>	<b>0</b>	<b>328</b>

	11	0	0	0	1	0	2	0	1	0	4	0	0	0	4	2	3	0	1	0	1	0	2	0	0	0			0	0	30	

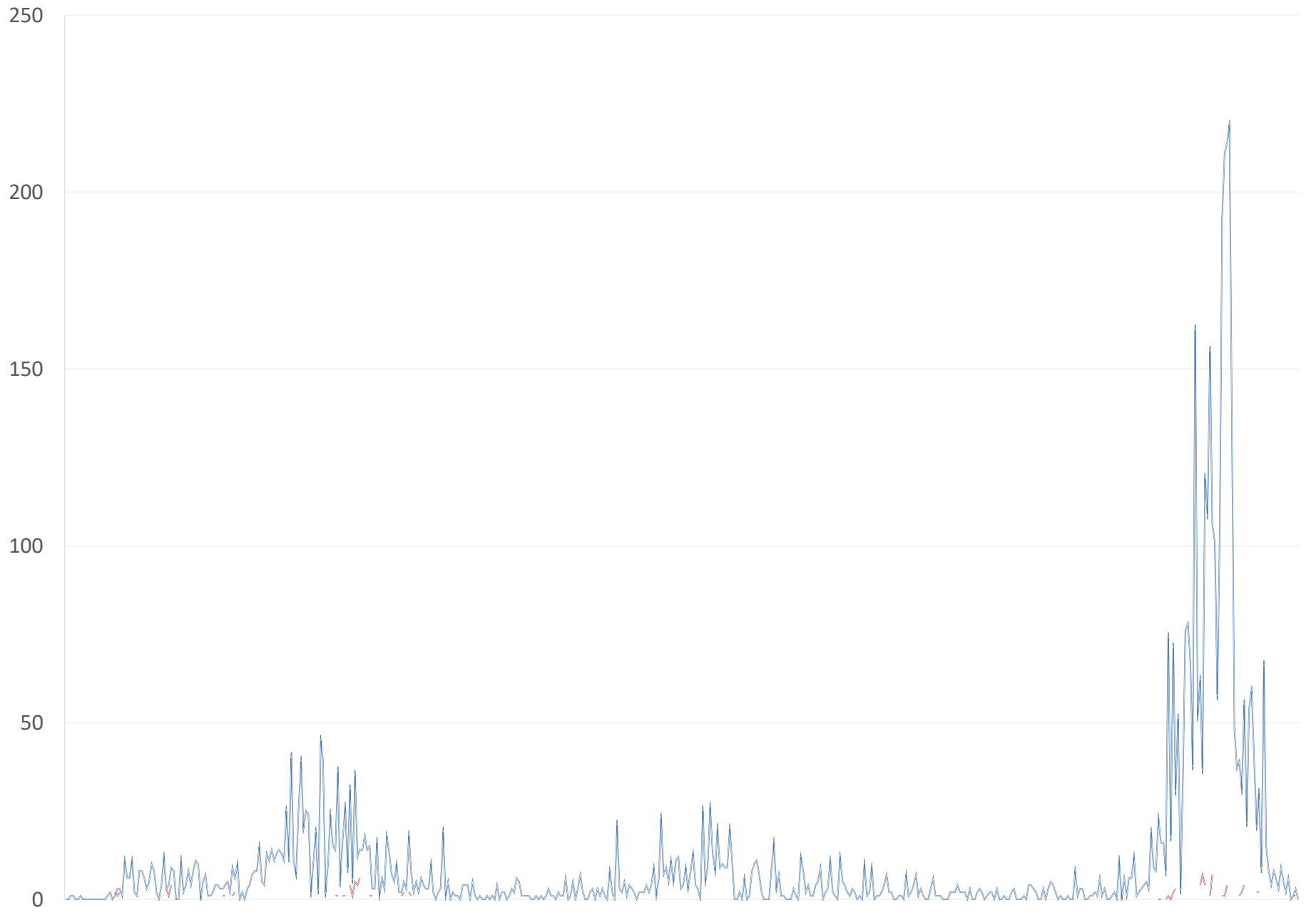
**\*Others include the following:**

***Radiologist, Microbiologist, Epidemiologist, Dispenser, Licensed Practical Nurse, Psychosocial worker, Hygienist, Logistician, Vaccinator, Ambulance Driver, Procurement Officer, Registrar, Accountant, Secretary, Hospital Administrator, Community Health Volunteer, GIS Specialist, EOC Coordinator, M&E Officer***

# COVID-19 WEEKLY EPI-CURVE

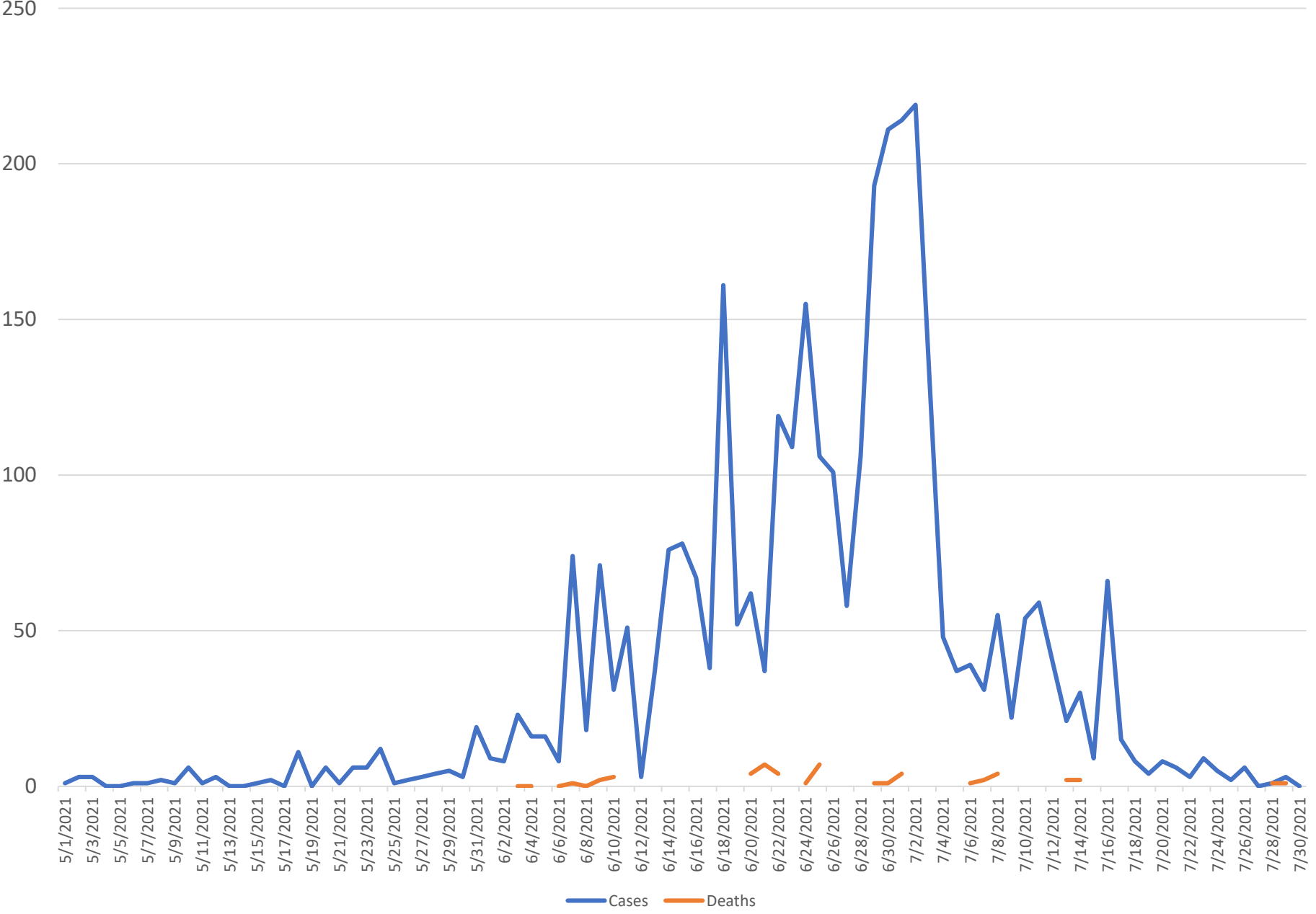


— Daily Cases — Daily Deaths

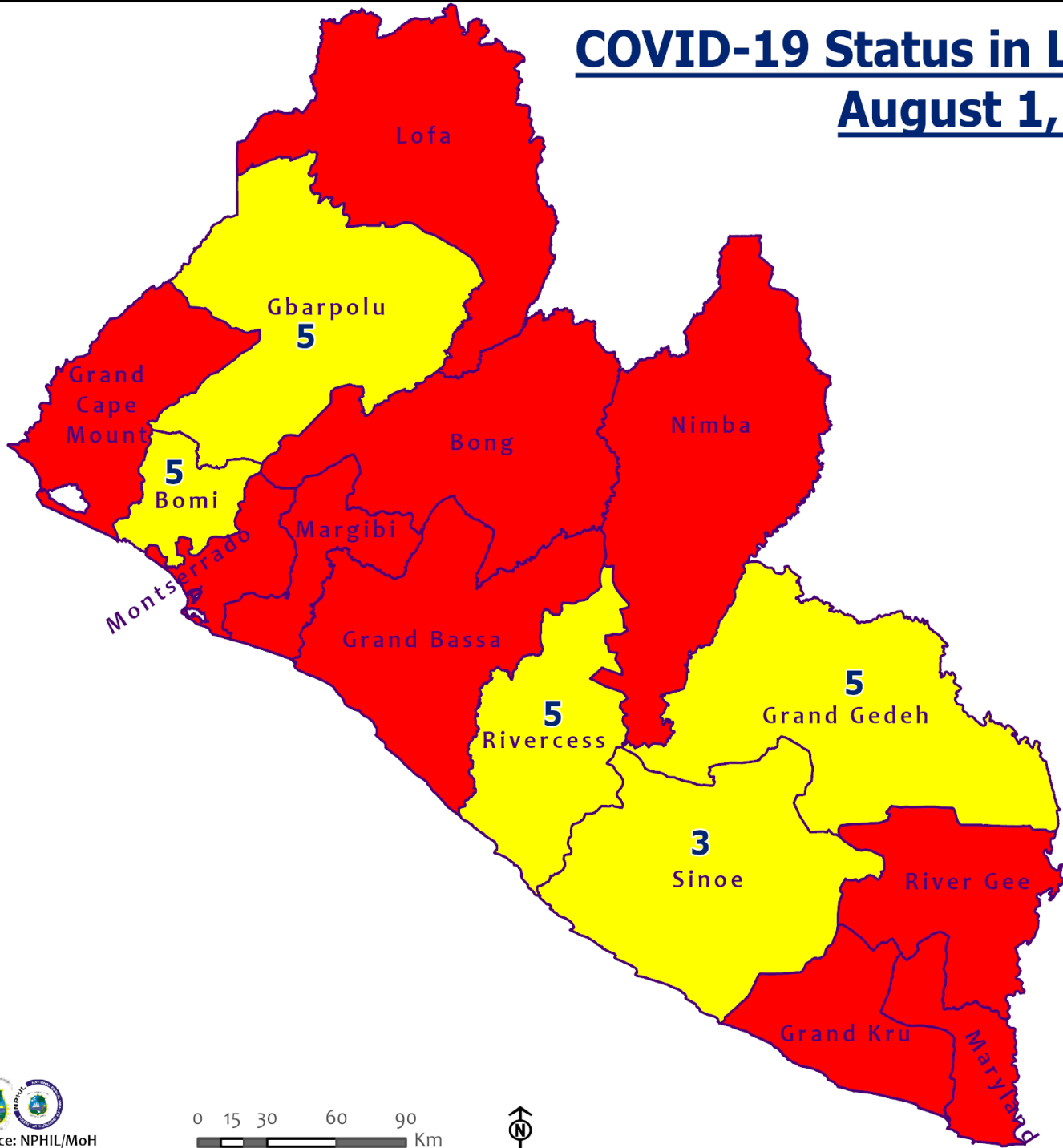




# Daily Epi-Curve (May 1 – August 1, 2021)



# COVID-19 Status in Liberia by County August 1, 2021



**Legend**

County Status

- Preparedness
- 14-Day Countdown
- Response



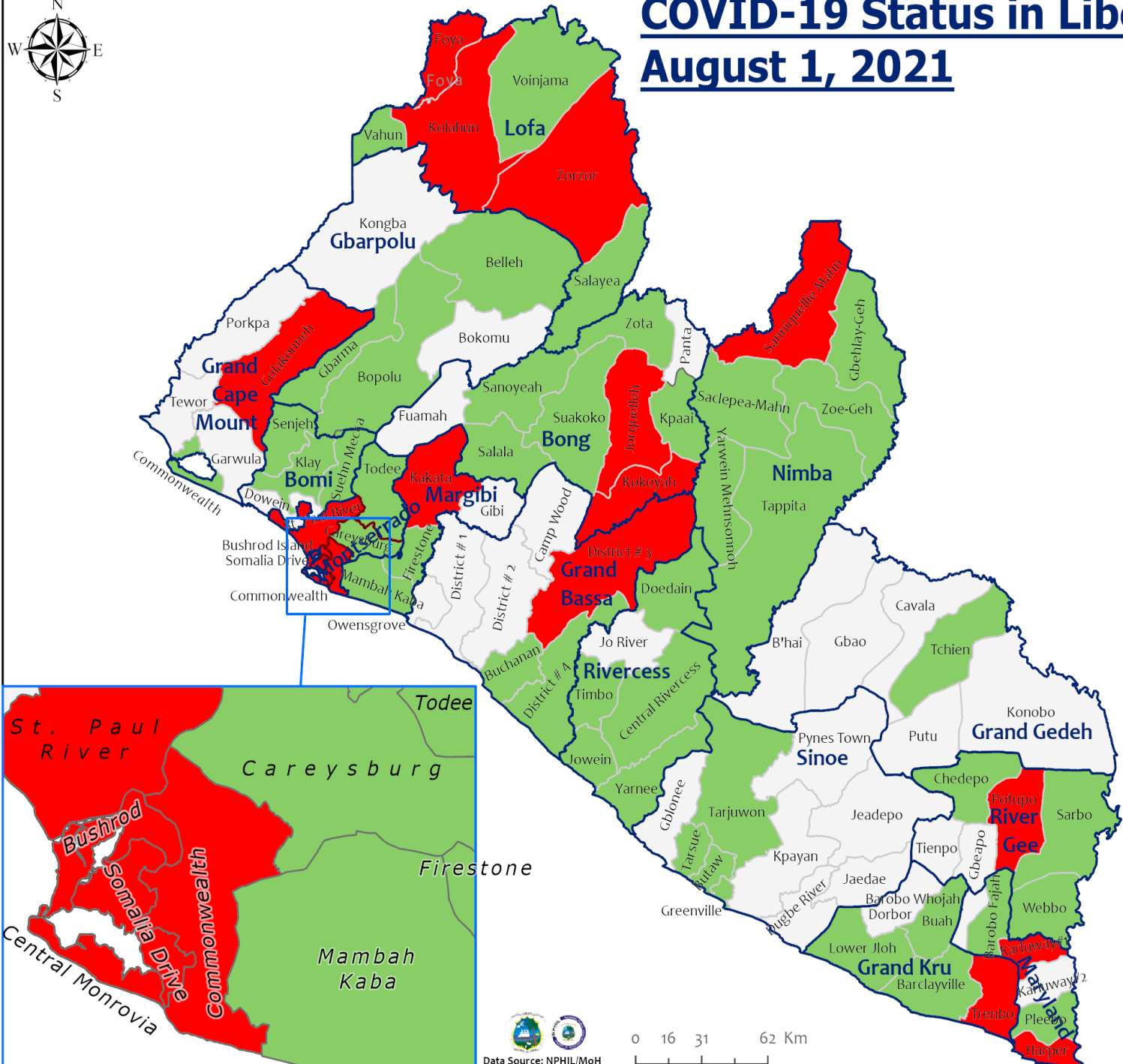
# COVID-19 Status in Liberia by District

## August 1, 2021



**Total Cases: 5,459**

Affected Counties	Cumulative Cases
Montserrado	4,466
Margibi	198
Lofa	150
Nimba	128
Bong	113
Grand Bassa	95
Bomi	61
Grand Cape Mount	52
Maryland	45
Gbarpolu	39
River Gee	38
Grand Gedeh	24
Grand Kru	22
Rivercess	16
Sinoe	12



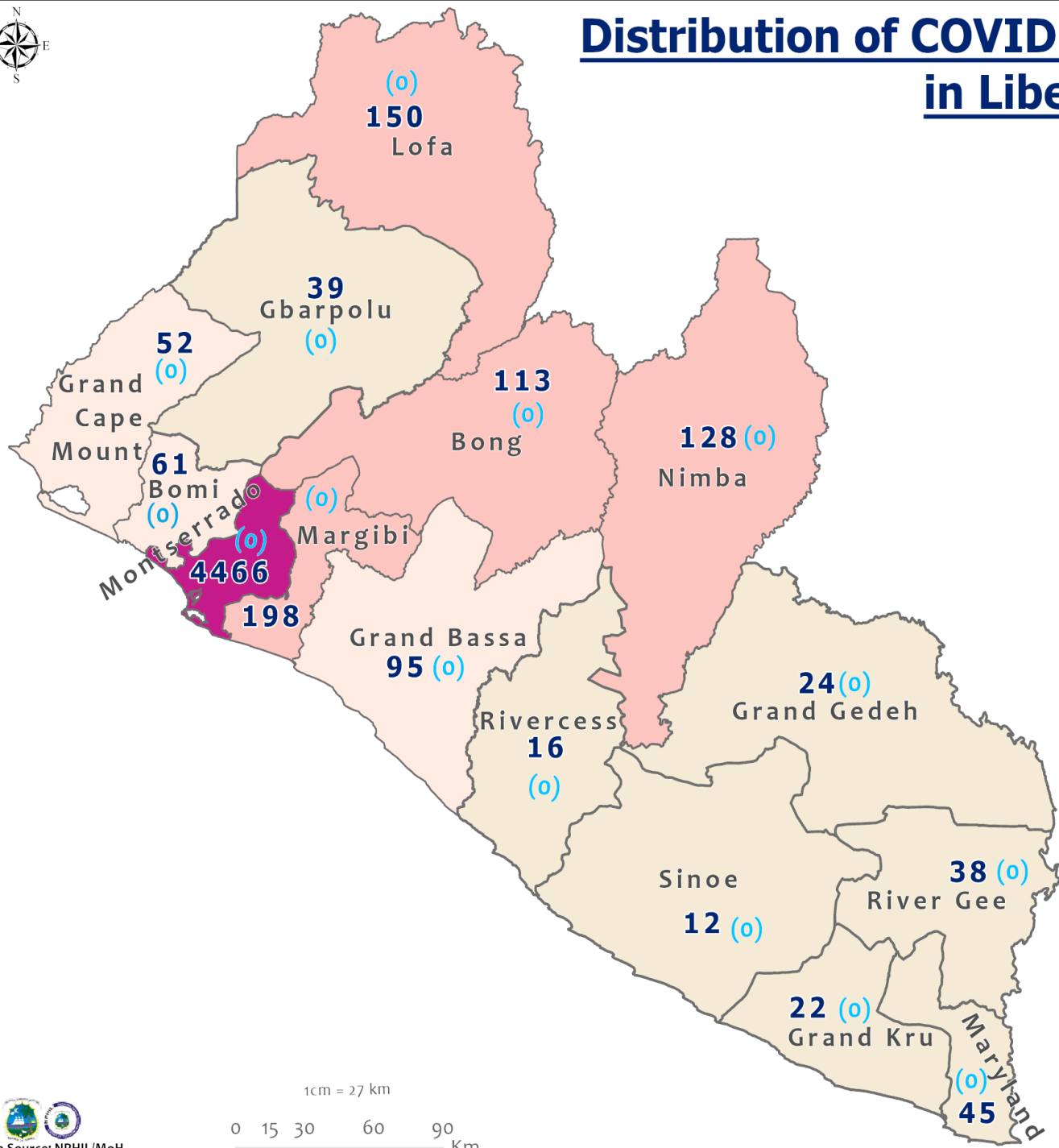
### Legend

#### District Status

- Never had a case
- Back from recovery or first time with active case(s)
- With active cases(s)
- With recovered cases only



# Distribution of COVID-19 Cases by County in Liberia - August 1, 2021



Total cumulative cases:

**5,459**

Total new cases:

**0**

## Legend

Number of Cases

- 1 - 50
- 51 - 100
- 101 - 200
- 201 - 500
- 501 - 5000

Cumulative cases

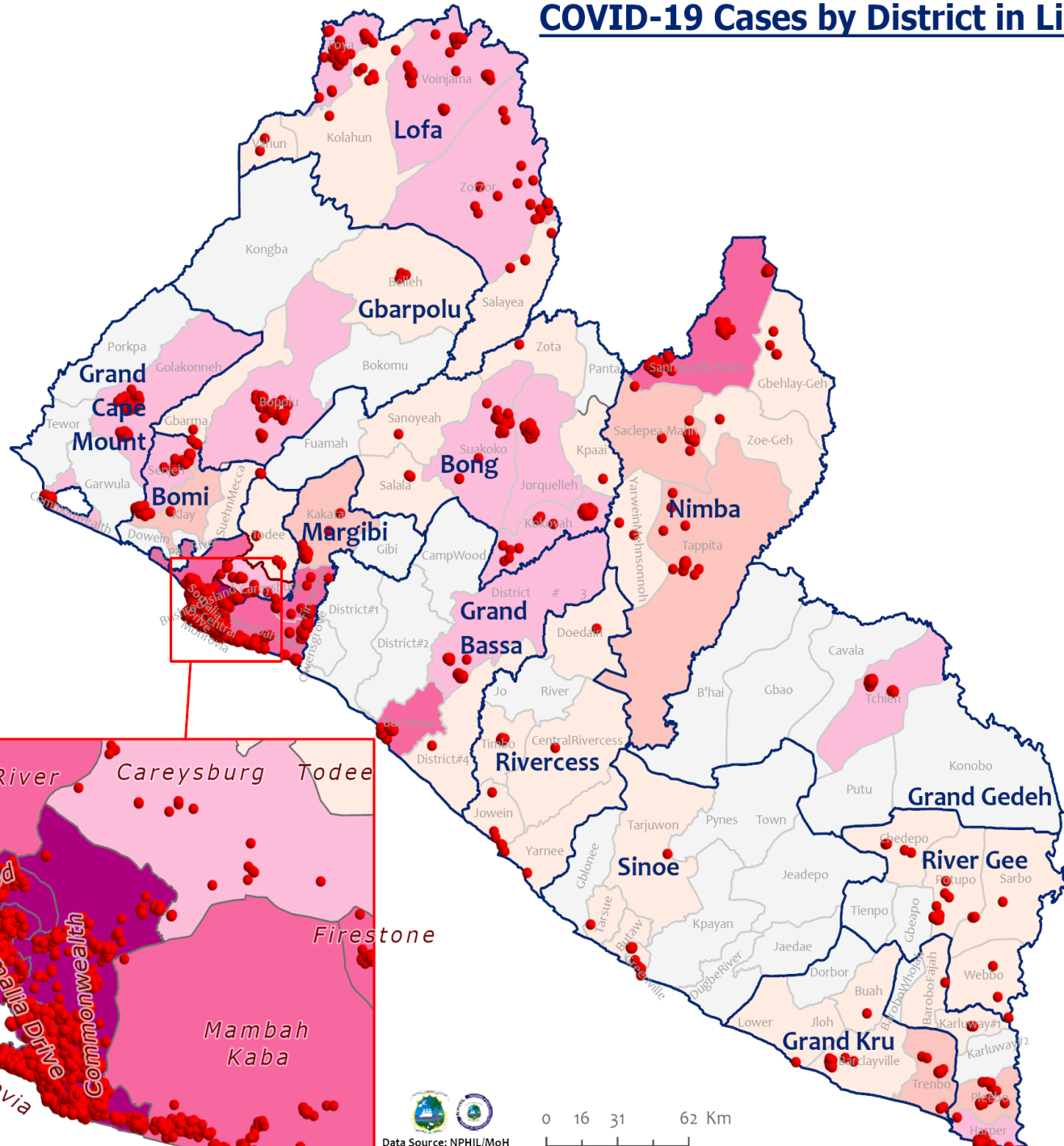
New cases

**0** (0)

1cm = 27 km

0 15 30 60 90 Km

# COVID-19 Cases by District in Liberia - August 1, 2022



**Total Cases: 5,459**

Affected Counties	Cumulative Cases
Montserrado	4,466
Margibi	198
Lofa	150
Nimba	128
Bong	113
Grand Bassa	95
Bomi	61
Grand Cape Mount	52
Maryland	45
Gbarpolu	39
River Gee	38
Grand Gedeh	24
Grand Kru	22
Rivercess	16
Sinoe	12

**Legend**

**Case Status**

- ★ New confirmed case
- Confirmed cases

**Cases / District**

- 0
- 1-10
- 11-20
- 21-50
- 51-500
- 501-1400
- 1401-2400

# Percent Distribution of COVID-19 Cases by Status in Liberia - 1 August 2021



**Total Cases: 5,459**

Affected Counties	Cumulative Cases
Montserrado	4,466
Margibi	198
Lofa	150
Nimba	128
Bong	113
Grand Bassa	95
Bomi	61
Grand Cape	52
Mount	52
Maryland	45
Gbarpolu	39
River Gee	38
Grand Gedeh	24
Grand Kru	22
Rivercess	16
Sinoe	12

## Legend

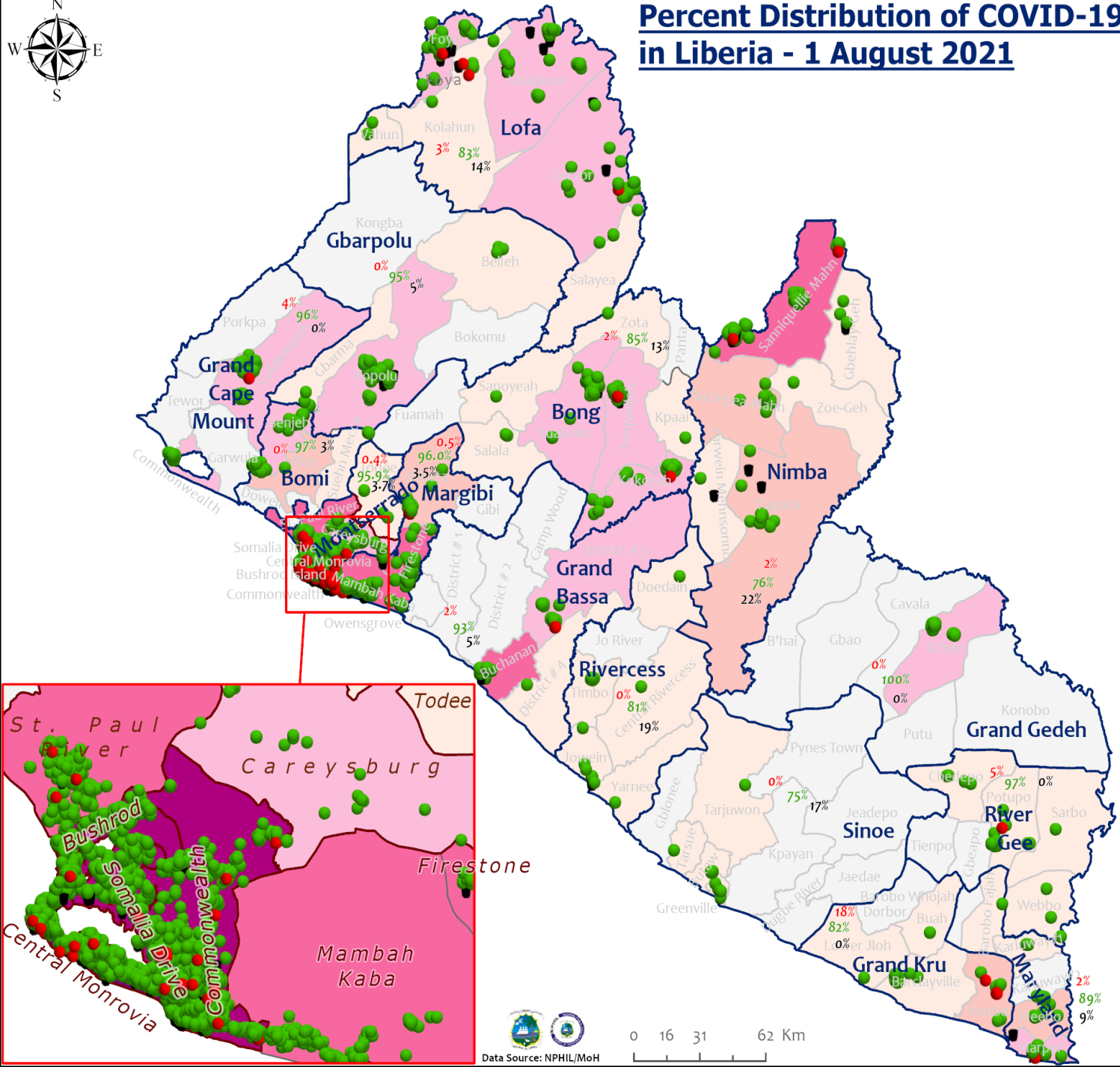
### Case Status

- Active
- Recovered
- Dead

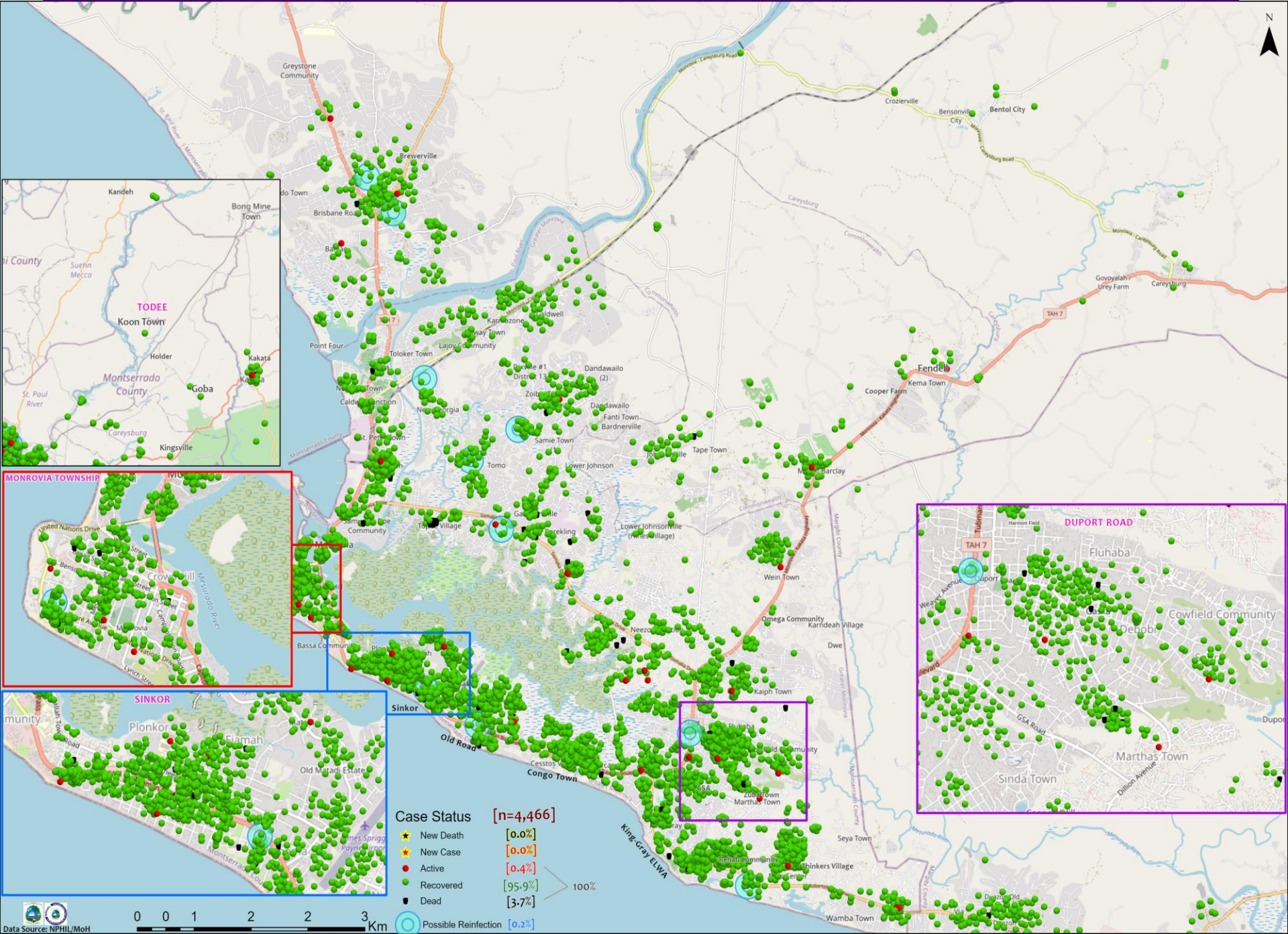
[1%]  
[94%]  
[5%]

### Cases / District

- 0
- 1-10
- 11-20
- 21-50
- 51-500
- 501-1400
- 1401-2400



# Distribution of COVID-19 Cases in Montserrat Communities, Liberia August 1, 2021







## Home-Base Care of COVID-19 – August 1, 2021

Country	New Admissions	Currently in Admissions	No. Followed-up (In-person/Phone)	Cumulative Admissions	New Recoveries	Cumulative Recoveries	Referrals to TU	Cumulative Referrals to TU	New Death	Cumulative Deaths
Montserrat	0	2	2	2238	3	2207	0	29	0	0
Nimba				0						
Bong				0						
Maryland										
Cape Mount										
Lofa										
Margibi				0						
<b>Total:</b>	0	2	2	2238	3	2207	0	29	0	0

<b>Laboratory Samples Evaluated – 1 August 2021</b>						
<b>County</b>	<b>Sample Evaluated</b>	<b>New Positive</b>	<b>Repeat Positive</b>	<b>Initial Negative</b>	<b>Repeat Test Negative</b>	<b>Pending Lab Result</b>
<b>Bomi</b>	1	0	0	1	0	0
<b>Bong</b>	1	0	0	1	0	0
<b>Grand Cape Mount</b>	1	0	0	1	0	0
<b>Margibi</b>	6	0	0	6	0	0
<b>Montserrado</b>	141	0	0	141	0	0
<b>TOTAL</b>	<b>150</b>	<b>0</b>	<b>0</b>	<b>150</b>	<b>0</b>	<b>0</b>
<b> </b>						
<b>Outgoing Traveler</b>	149	0	0	149	0	0
<b>Volunteer</b>	1	0	0	1	0	0
<b>Incoming Traveler*</b>	133	0	0	133	0	0
<b> </b>						
<b>NRL</b>	149	0	0	149	0	0
<b>US-Embassy Lab</b>	1	0	0	1	0	0



**Thank you for Listening**