



Liberia COVID-19 Daily Sitrep 531 (August 28, 2021)

Summary of COVID-19 Cases by Reporting County, Liberia, 16 March 2020 – 28 August 2021

County	Laboratory Confirmed Cases	Confirmed Cases on Contact List	Confirmed Cumulative Cases
Bomi	0	0	61
Bong	0	0	114
Gbarpolu	0	0	39
Grand Bassa	0	0	95
Grand Cape Mount	0	0	57
Grand Kru	0	0	26
Grand Gedeh	0	0	27
Lofa	0	0	150
Margibi	0	0	201
Maryland	0	0	147
Montserrado	2	0	4530
Nimba	0	0	165
Rivercess	0	0	16
River Gee	0	0	54
Sinoe	0	0	12
NATIONAL	2	0	5694

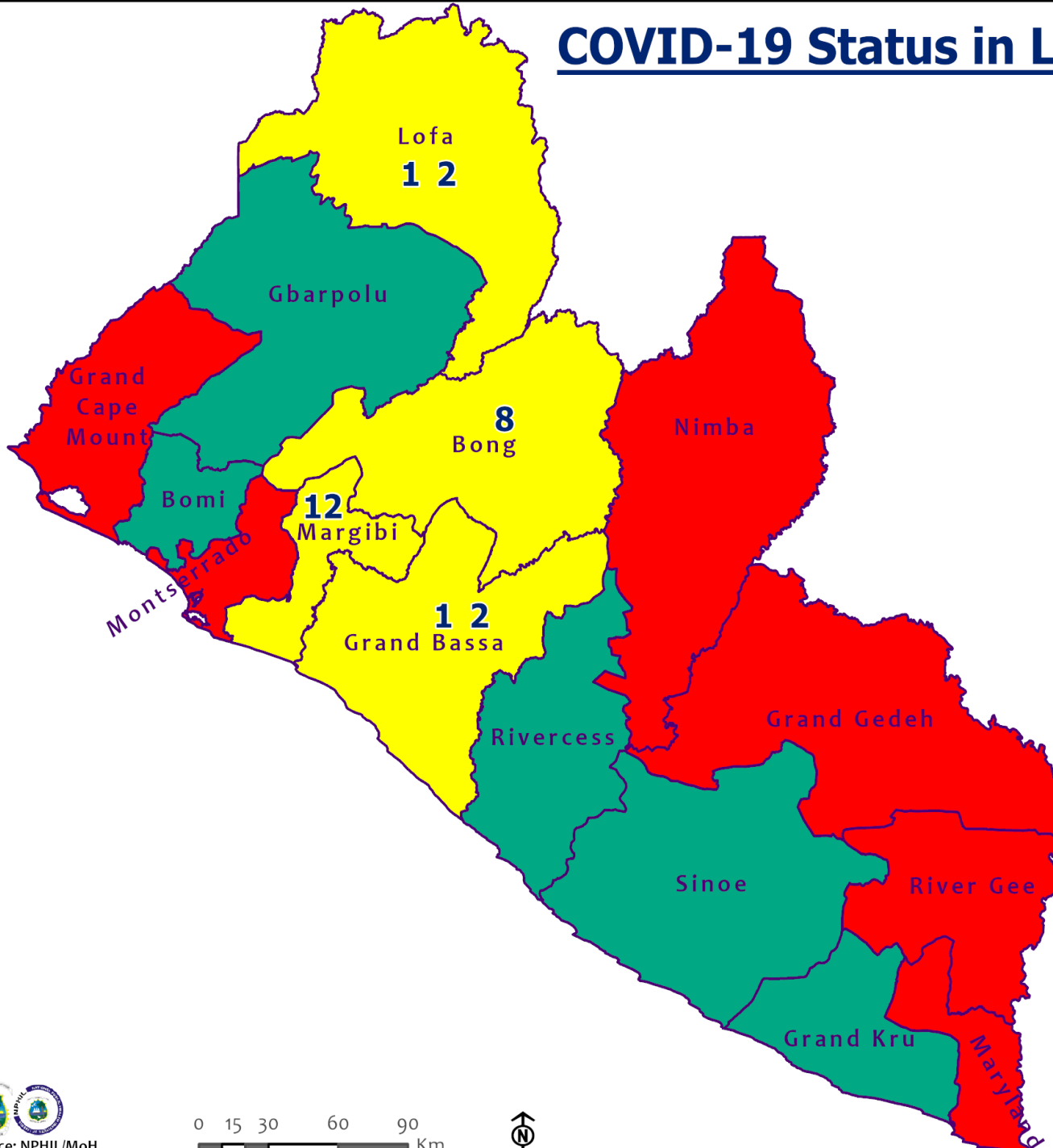
Summary of COVID-19 Deaths by Reporting County, Liberia, 16 March 2020 – 28 August 2021

County	ew Suspected Deaths	COVID-19 Treatment Unit	Total in COVID-19 Treatment Unit	Health Facility	Total in Health Facility	Community	Total in Community	Confirmed Deaths on Contact List	Cumulative Deaths
Bomi	0	0	0	0	2	0	0	0	2
Bong	0	0	4	0	9	0	3	0	16
Gbarpolu	0	0	0	0	2	0	0	0	2
Grand Bassa	0	0	0	0	6	0	0	0	6
Grand Cape Mount	0	0	0	0	0	0	0	0	0
Grand Gedeh	0	0	0	0	0	0	0	0	0
Grand Kru	0	0	0	0	0	0	0	0	0
Lofa	0	0	2	0	10	0	9	0	21
Maryland	0	0	1	0	5	0	1	0	7
Margibi	0	0	2	0	5	0	0	0	7
Montserrado	0	0	44	0	103	0	18	0	165
Nimba	0	0	6	0	19	0	4	0	29
Rivercess	0	0	0	0	2	0	1	0	3
River Gee	0	0	0	0	0	0	0	0	0
Sinoe	0	0	0	0	2	0	0	0	2
National	0	0	59	0	165	0	36	0	260

Daily and Cumulative Healthcare Worker (HCW) COVID-19 Cases and Deaths by County, Liberia, 16 March 2020 – 28 August 2021

County	New Suspected & High Risk Cases (Alive)			New Suspect Death	Laboratory Confirmed Cases	Confirmed Cases on Contact List	CUMULATIVE CASES (ALIVE & DEAD)	
	Suspect	High Risk	Total				Confirmed	Deaths
Bomi	0	0	0	0	0	0	15	0
Bong	0	0	0	0	0	0	21	4
Gbarpolu	0	0	0	0	0	0	1	1
Grand Bassa	0	0	0	0	0	0	24	0
Grand Gedeh	0	0	0	0	0	0	2	0
Grand Kru	0	0	0	0	0	0	14	0
Grand Cape Mount	0	0	0	0	0	0	0	0
Lofa	0	0	0	0	0	0	28	0
Margibi	0	0	0	0	0	0	12	1
Maryland	0	0	0	0	0	0	17	0
Montserrado	0	0	0	0	0	0	145	2
Nimba	0	0	0	0	0	0	30	0
Rivercess	0	0	0	0	0	0	6	0
River Gee	0	0	0	0	0	0	10	0
Sinoe	0	0	0	0	0	0	3	0
NATIONAL	0	0	0	0	0	0	328	8

COVID-19 Status in Liberia by County August 28, 2021



Legend

County Status

- Preparedness
- 14-Day Countdown
- Response



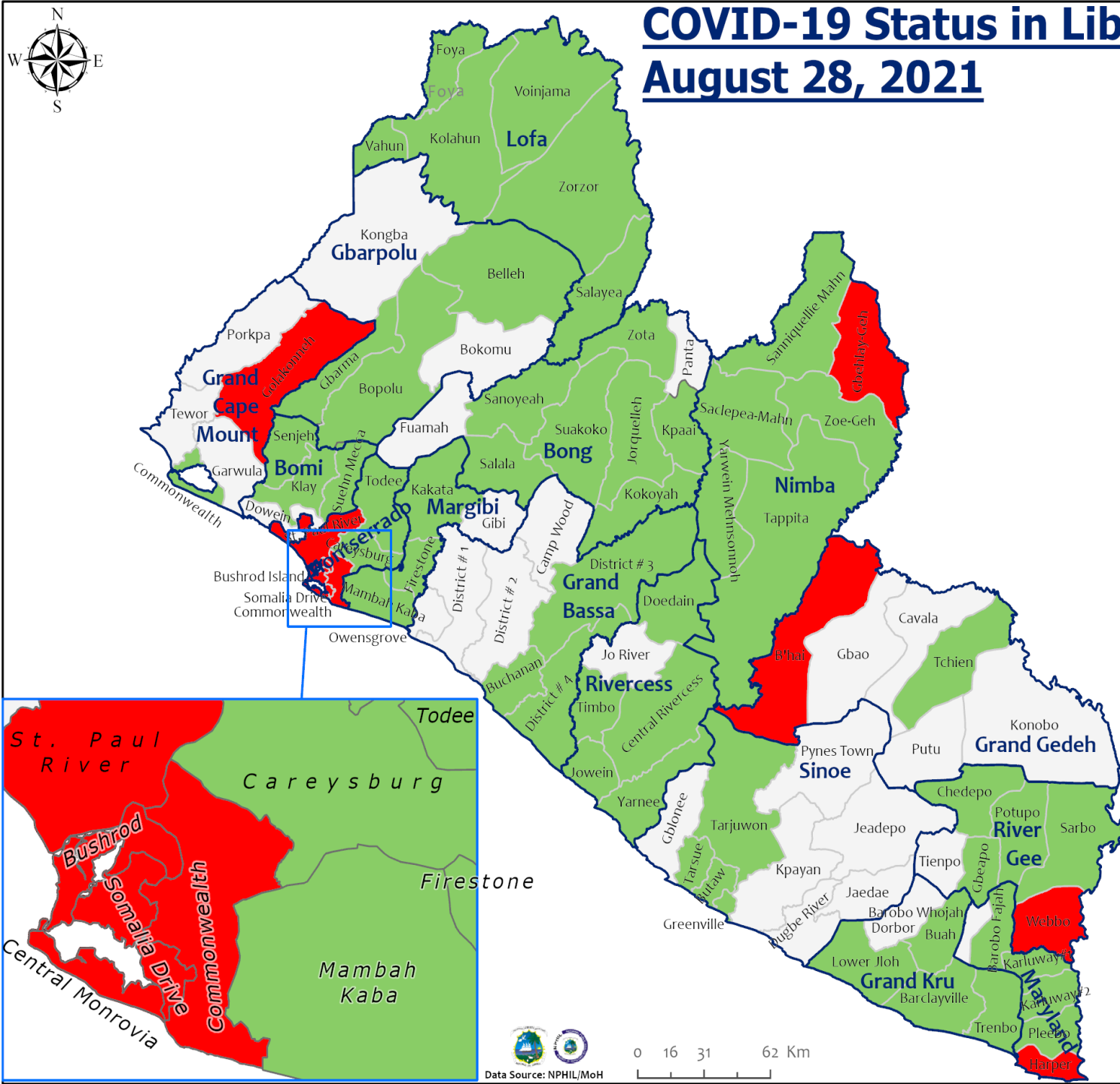
COVID-19 Status in Liberia by District

August 28, 2021



Total Cases: 5,694

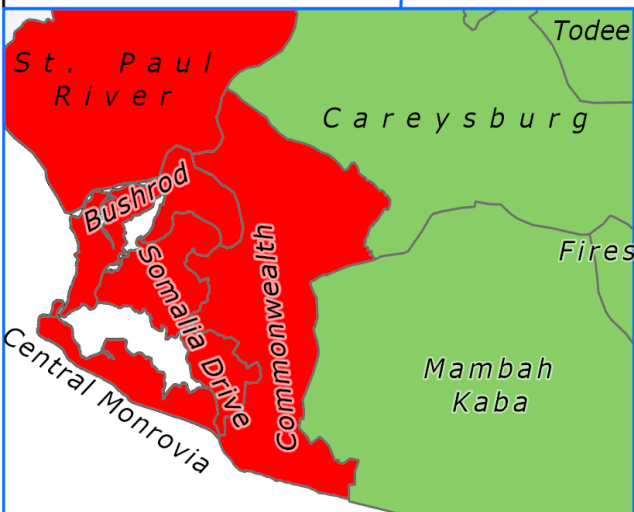
Affected Counties	Cumulative Cases
Montserrado	4,530
Margibi	201
Lofa	150
Nimba	165
Maryland	147
Bong	114
Grand Bassa	95
Bomi	61
Grand Cape Mount	57
River Gee	54
Gbarpolu	39
Grand Gedeh	27
Grand Kru	26
Rivercess	16
Sinoe	12



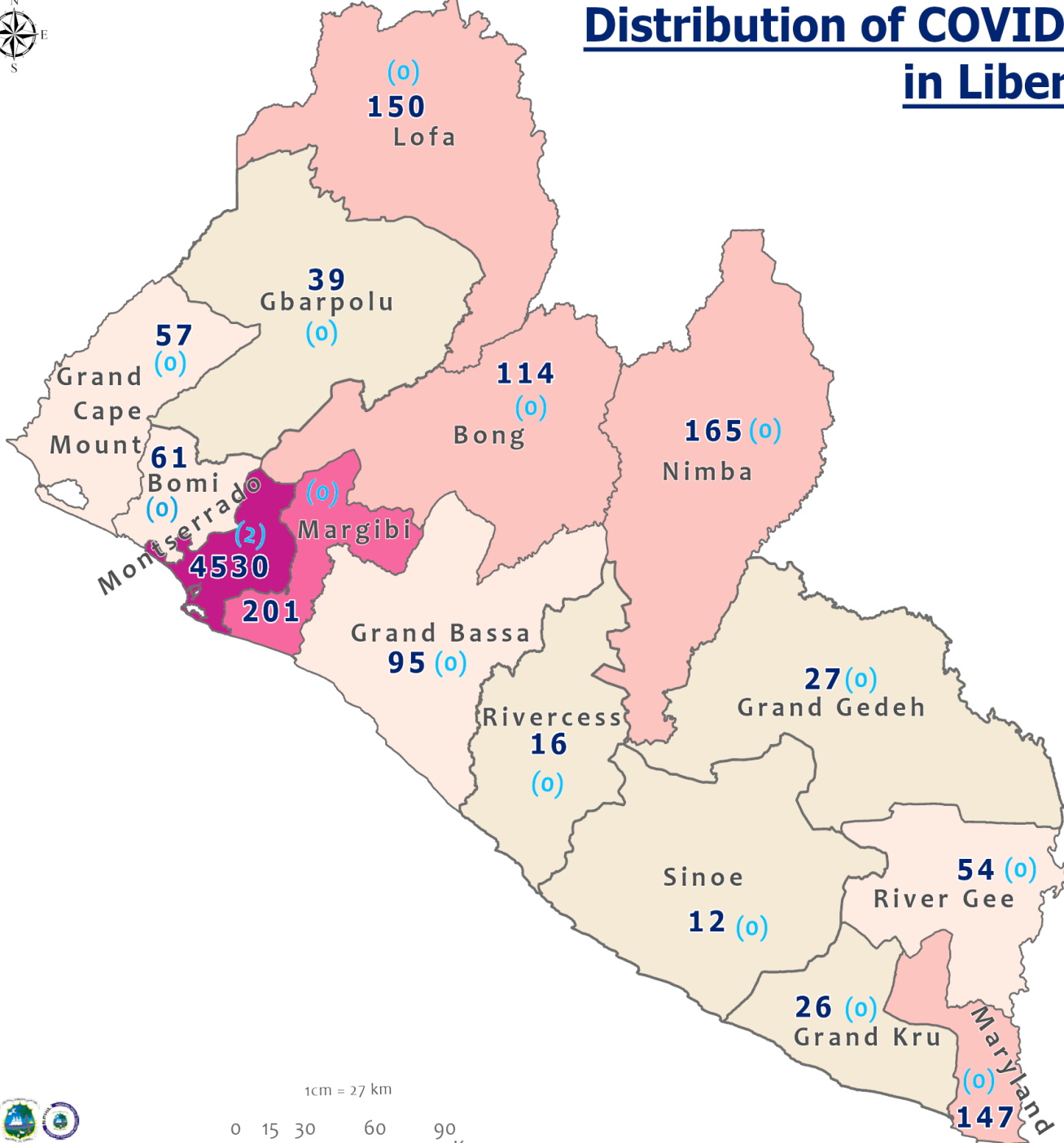
Legend

District Status

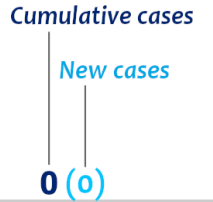
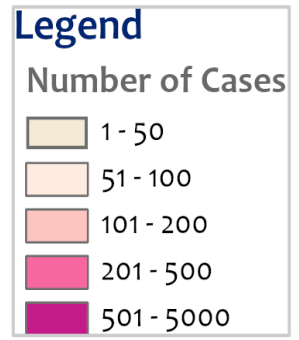
- Never had a case
- Back from recovery or first time with active case(s)
- With active cases(s)
- With recovered cases only



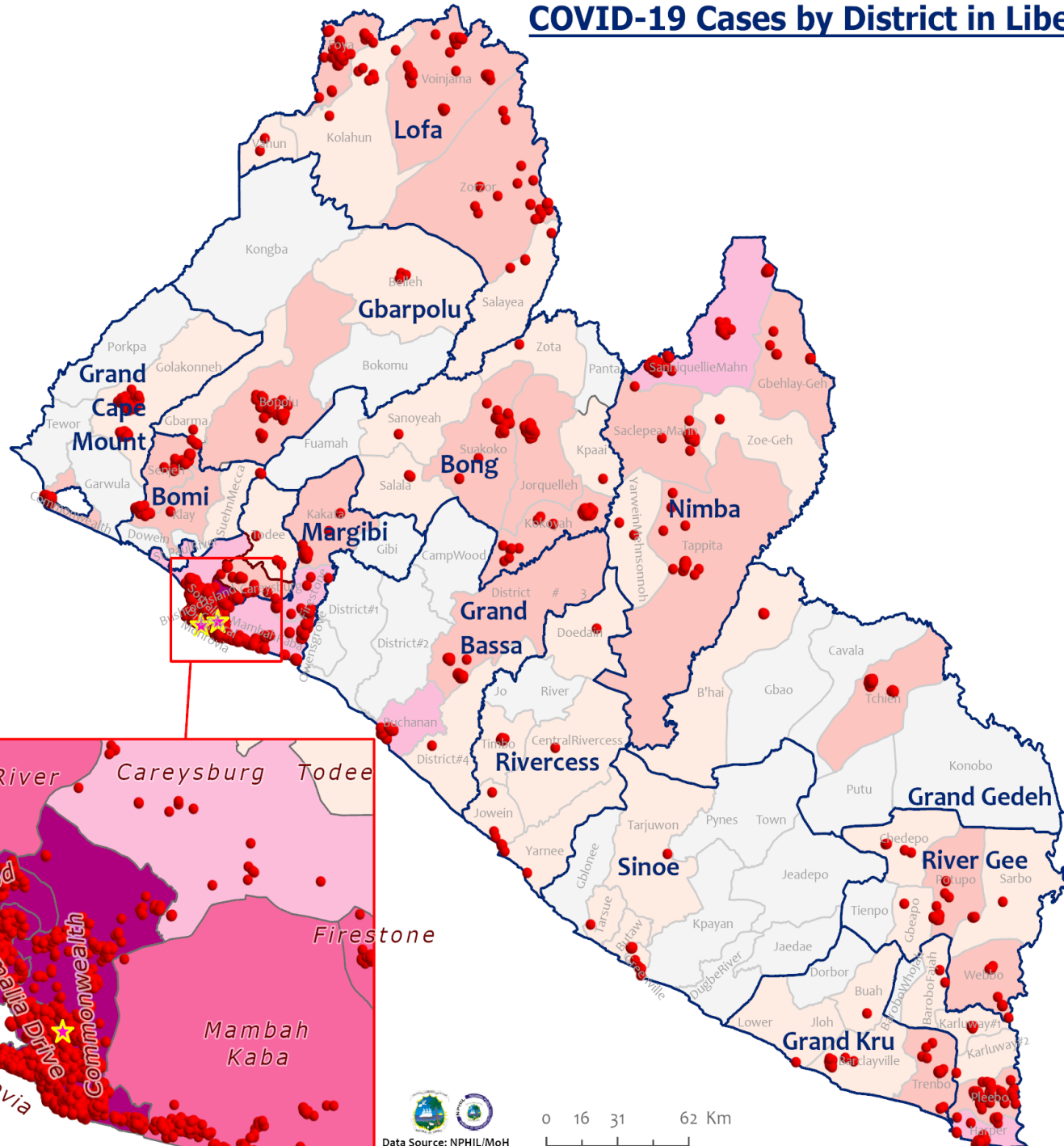
Distribution of COVID-19 Cases by County in Liberia - August 28, 2021



Total cumulative cases:
5,694
 Total new cases:
2



COVID-19 Cases by District in Liberia - August 28, 2021



Total Cases: 5,694

Affected Counties	Cumulative Cases
Montserrado	4,530
Margibi	201
Lofa	150
Nimba	165
Maryland	147
Bong	114
Grand Bassa	95
Bomi	61
Grand Cape Mount	57
River Gee	54
Gbarpolu	39
Grand Gedeh	27
Grand Kru	26
Rivercess	16
Sinoe	12

Legend

Case Status

- ★ New confirmed case
- Confirmed cases

Cases / District

- 0
- 1-10
- 11-50
- 51-500
- 501-1000
- 1001-1500
- 1501-2000

Percent Distribution of COVID-19 Cases by Status in Liberia - 28 August 2021



Total Cases: 5,694

Affected Counties	Cumulative Cases
Montserrado	4,530
Margibi	201
Lofa	150
Nimba	165
Maryland	147
Bong	114
Grand Bassa	95
Bomi	61
Grand Cape	57
Mount	57
River Gee	54
Gbarpolu	39
Grand Gedeh	27
Grand Kru	26
Rivercess	16
Sinoe	12

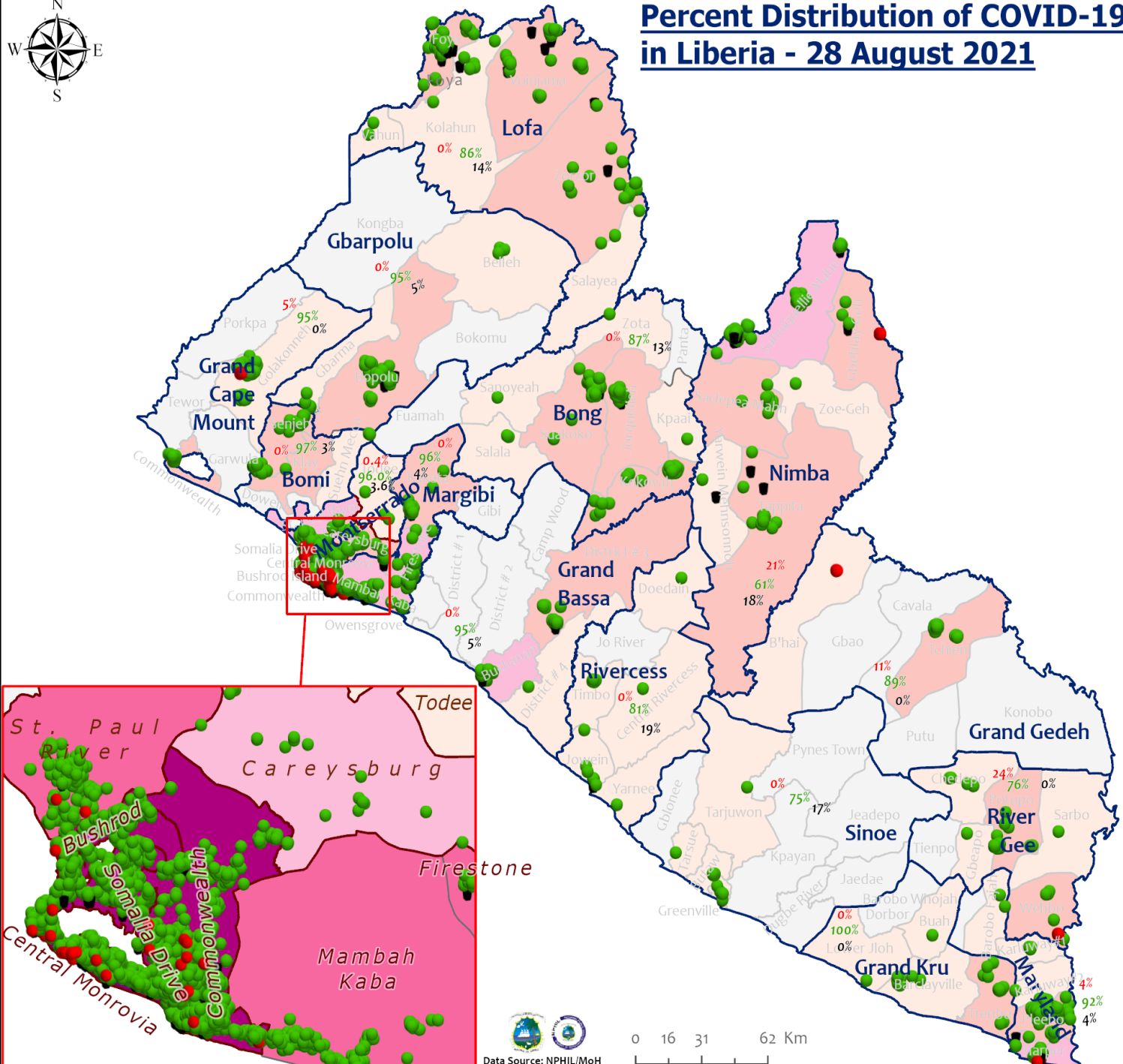
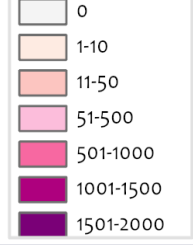
Legend

Case Status

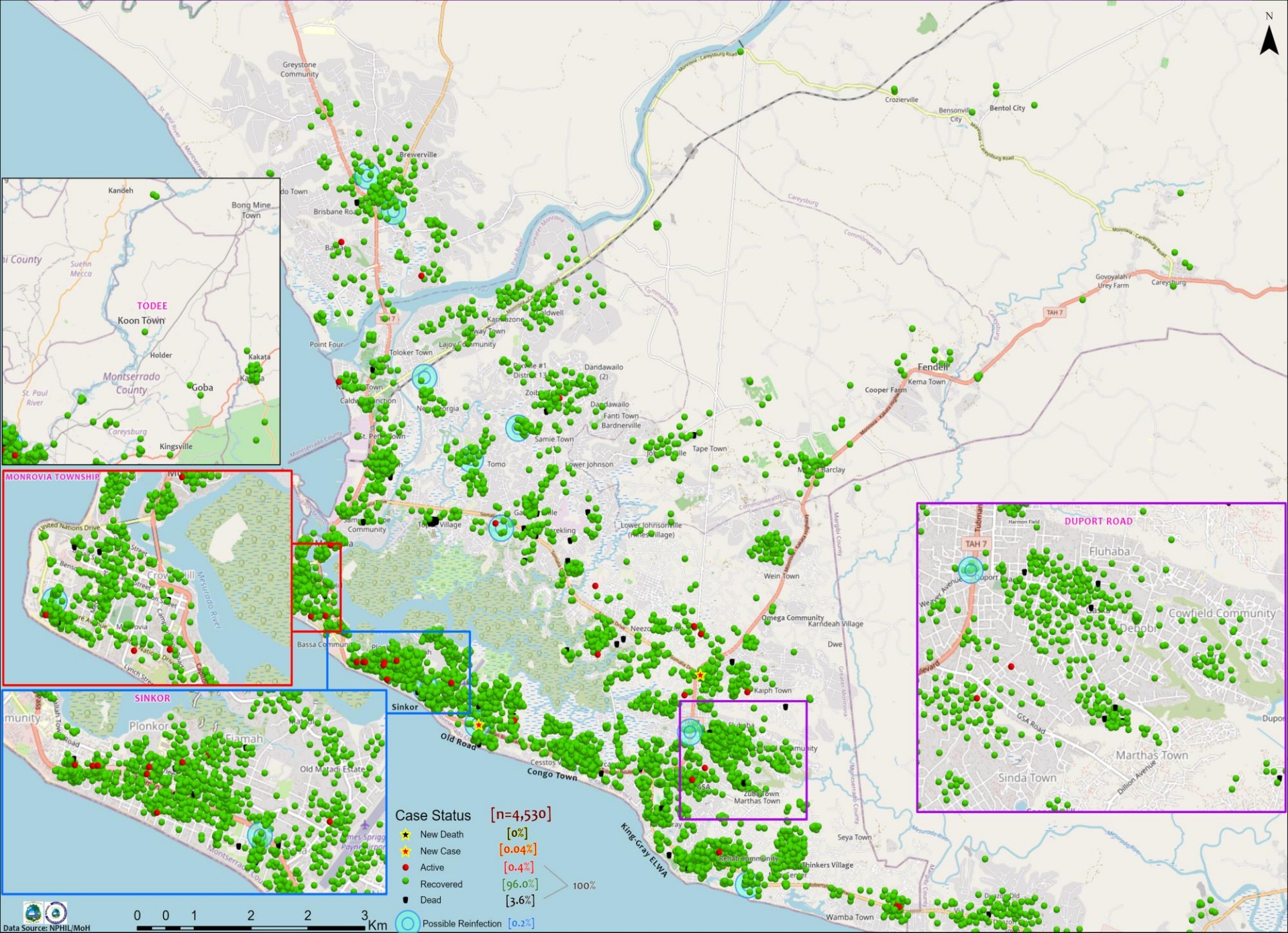
- Active
- Recovered
- Dead

[1%]
[94%]
[5%]

Cases / District



Distribution of COVID-19 Cases in Montserrado Communities, Liberia August 28, 2021



Case Status [n=4,530]

★ New Death	[0%]
★ New Case	[0.04%]
● Active	[0.4%]
● Recovered	[96.0%]
■ Dead	[3.6%]
○ Possible Reinfection	[0.2%]

Summary of confirmed, recovered, active, and dead cases by reporting counties, Liberia, 16 March 2020 – 28 Aug 2021

County	Confirmed Cases		Recovered Cases		Active Cases	Dead Cases	
	New	Cum	New	Cum		New	Cum
Bomi	0	61	0	59	0	0	2
Bong	0	114	0	98	0	0	16
Gbarpolu	0	39	0	37	0	0	2
Grand Bassa	0	95	0	88	1	0	6
Grand Cape Mount	0	57	0	54	3	0	0
Grand Gedeh	0	27	0	24	3	0	0
Grand Kru	0	26	0	26	0	0	0
Lofa	0	150	0	128	1	0	21
Margibi	0	201	0	194	0	0	7
Maryland	0	147	0	134	6	0	7
Montserrado	2	4530	0	4308	57	0	165
Nimba	0	165	0	102	34	0	29
Rivercess	0	16	0	13	0	0	3
River Gee	0	54	0	41	13	0	0
Sinoe	0	12	0	10	0	0	2
National	2	5694	0	5316	118	0	260

Home-Base Care of COVID-19 – August 28, 2021

County	New Admissions	Currently in Admissions	No. Followed-up (In-person/Phone)	Cumulative Admissions	New Recoveries	Cumulative Recoveries	Referrals to TU	Cumulative Referrals to TU	New Death	Cumulative Deaths
Montserratado	0	0	0	2236	0	2207	0	29	0	0
Nimba				0						
Bong				0						
Maryland										
Cape Mount										
Lofa										
Margibi				0						
Total:	0	0	0	2236	0	2207	0	29	0	0

Laboratory Samples Evaluated – 28 August 2021

County	Sample Evaluated	New Positive	Repeat Positive	Initial Negative	Repeat Test Negative	Pending Lab Result
Bomi	5	0	0	5	0	0
Bong	1	0	0	1	0	0
Grand Cape Mount	3	0	0	3	0	0
Lofa	1	0	0	1	0	0
Margibi	7	0	0	7	0	0
Montserrado	117	1	0	115	0	1
TOTAL	134	1	0	132	0	1
Outgoing Traveler	131	1	0	129	0	1
Volunteer	3	0	0	3	0	0
Incoming Traveler*	144	1	0	143	0	0
NRL	134	1	0	132	0	1

Summary of COVID-19 Contact Tracing in Response Counties

County	New Contacts Line listed	Cumulative Contacts	No. of Health Care Workers as Contacts	Cumulative no. of Health Care Workers as contacts	Contacts became a case	Cumulative contacts that became a case	Contacts Completed 14 Days	Cumulative Contacts Completing 14 Days	Contacts Under Follow-up	Contacts lost to Follow-up
Montserratado	0	9207	0	704	0	211	0	8990	0	6
Margibi	0	1655	0	135	0	44	0	1641	0	3
Grand Bassa	0	416	0	150	0	63	0	398	0	0
Sinoe	0	229	0	35	0	4	0	229	0	0
Lofa	0	758	0	103	0	34	0	726	0	3
Nimba	0	677	0	141	0	25	0	641	7	0
Bong	0	476	0	73	0	28	0	460	0	2
Gbarpolu	0	87	0	13	0	8	0	87	0	0
Grand Cape Mount	0	241	0	0	0	6	0	241	0	0
RiverGee	0	133	0	15	0	31	0	123	0	0
Maryland	0	433	0	86	0	24	0	244	4	0
Bomi	0	289	0	24	0	52	0	277	0	0
Rivercess	0	102	0	62	0	6	0	102	0	0
Grand Kru	0	333	0	131	0	17	0	353	0	0
Grand Gedeh	0	126	0	2	0	9	0	110	0	0
National	0	15162	0	1674	0	562	0	14622	11	14

Thank you for Listening