



Liberia COVID-19 Daily Sitrep 503 (July 31, 2021)

Summary of COVID-19 Cases by Reporting County, Liberia, 16 March 2020 – 31 July 2021

County	Laboratory Confirmed Cases	Confirmed Cases on Contact List	Confirmed Cumulative Cases
Bomi	0	0	61
Bong	0	0	113
Gbarpolu	0	0	39
Grand Bassa	0	0	95
Grand Cape Mount	0	0	52
Grand Kru	0	0	22
Grand Gedeh	0	0	24
Lofa	0	0	150
Margibi	0	0	198
Maryland	0	0	45
Montserrado	0	0	4466
Nimba	0	0	128
Rivercess	0	0	16
River Gee	0	0	38
Sinoe	0	0	12
NATIONAL	0	0	5459

Summary of COVID-19 Deaths by Reporting County, Liberia, 16 March 2020 – 31 July 2021

County	ew Suspected Deaths	COVID-19 Treatment Unit	Total in COVID-19 Treatment Unit	Health Facility	Total in Health Facility	Community	Total in Community	Confirmed Deaths on Contact List	Cumulative Deaths
Bomi	0	0	0	0	2	0	0	0	2
Bong	0	0	4	0	9	0	3	0	16
Gbarpolu	0	0	0	0	2	0	0	0	2
Grand Bassa	0	0	0	0	5	0	0	0	5
Grand Cape Mount	0	0	0	0	0	0	0	0	0
Grand Gedeh	0	0	0	0	0	0	0	0	0
Grand Kru	0	0	0	0	0	0	0	0	0
Lofa	0	0	2	0	10	0	9	0	21
Maryland	0	0	0	0	4	0	0	0	4
Margibi	0	0	2	0	5	0	0	0	7
Montserrado	0	0	42	0	69	0	18	0	129
Nimba	0	0	6	0	18	0	4	0	28
Rivercess	0	0	0	0	2	0	1	0	3
River Gee	0	0	0	0	0	0	0	0	0
Sinoe	0	0	0	0	2	0	0	0	2
National	0	0	56	0	128	0	35	0	219

Daily and Cumulative Healthcare Worker (HCW) COVID-19 Cases and Deaths by County, Liberia, 16 March 2020 – 31 July 2021

County	New Suspected & High Risk Cases (Alive)			New Suspect Death	Laboratory Confirmed Cases	Confirmed Cases on Contact List	CUMULATIVE CASES (ALIVE & DEAD)	
	Suspect	High Risk	Total				Confirmed	Deaths
Bomi	0	0	0	0	0	0	15	0
Bong	0	0	0	0	0	0	21	4
Gbarpolu	0	0	0	0	0	0	1	1
Grand Bassa	0	0	0	0	0	0	24	0
Grand Gedeh	0	0	0	0	0	0	2	0
Grand Kru	0	0	0	0	0	0	14	0
Grand Cape Mount	0	0	0	0	0	0	0	0
Lofa	0	0	0	0	0	0	28	0
Margibi	0	0	0	0	0	0	12	1
Maryland	0	0	0	0	0	0	17	0
Montserrado	0	0	0	0	0	0	145	2
Nimba	0	0	0	0	0	0	30	0
Rivercess	0	0	0	0	0	0	6	0
River Gee	0	0	0	0	0	0	10	0
Sinoe	0	0	0	0	0	0	3	0
NATIONAL	0	0	0	0	0	0	328	8

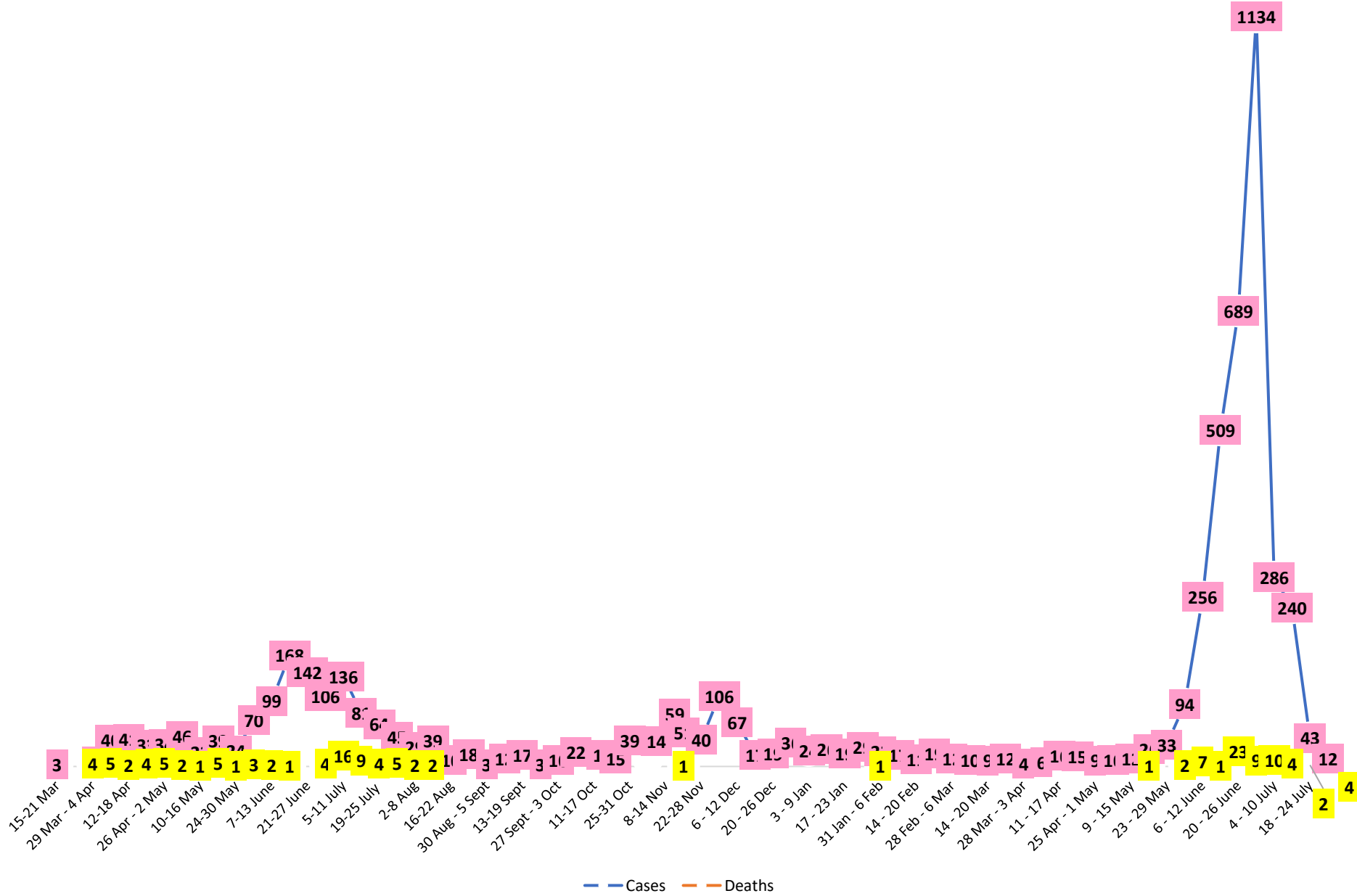
Cadre Cases and Deaths by Health Care Workers (16 March 2020 – 31 July 2021)

Health Care Worker Cadre	Montserratado		Margibi		Nimba		River Gee		Sinoe		Grand Kru		Gbarpolu		Bong		Lofa		Grand Bassa		Maryland		Bomi		Rivercess		Grand Cape Mount		Grand Gedeh		(Total)	
	Cases	Deaths	Cases	Deaths	Cases	Deaths	Cases	Deaths	Cases	Deaths	Cases	Deaths	Cases	Deaths	Cases	Deaths	Cases	Deaths	Cases	Deaths	Cases	Deaths	Cases	Deaths	Cases	Deaths	Cases	Deaths	Cases	Deaths		
Doctors	24	0	1	0	5	0	1	0	0	0	0	0	0	0	2	0	0	0	2	0	1	0	0	0	0	0	0	0	0	0	36	
Pharmacists	7	0	0	0	0	0	0	0	0	0	0	0	0	0	0	0	0	0	0	0	0	0	0	0	0	0	0	0	0	0	7	
Nurses	49	1	2	0	4	0	7	0	0	0	2	0	1	1	15	4	10	0	16	0	7	0	5	0	0	0	0	0	1	0	119	
Nurse Aid	0	0	0	0	10	0	0	0	0	0	4	0	0	0	0	0	7	0	3	0	0	0	5	0	0	0	0	0	0	0	29	
Midwife	0	0	0	0	0	0	1	0	0	0	1	0	0	0	0	0	0	0	0	0	0	1	0	0	0	0	0	0	0	0	3	
Physician Assistants	10	1	1	0	0	0	1	0	0	0	1	0	0	0	0	0	0	0	0	0	0	0	0	0	0	0	0	0	0	0	13	
Lab Technician	11	0	1	0	2	0	0	0	1	0	1	0	0	0	4	0	2	0	0	0	9	0	1	0	3	0	0	0	0	0	35	
Environmental Health Technicians	5	0	0	0	0	0	0	0	0	0	0	0	0	0	0	0	0	0	0	0	0	0	0	0	0	0	0	0	0	0	5	
Dieticians	0	0	7	1	1	0	0	0	0	0	0	0	0	0	0	0	0	0	1	0	0	0	0	0	0	0	0	0	0	0	9	
Hospital Cleaner	1	0	0	0	0	0	0	0	0	0	1	0	0	0	0	0	6	0	1	0	0	0	1	0	2	0	0	0	0	0	12	
Others*	38	0	0	0	8	0	0	0	2	0	4	0	0	0	0	0	3	0	1	0	0	2	0	1	0	0	0	1	0	60		
Total:	145	2	12	1	30	0	10	0	3	0	14	0	1	1	21	4	28	0	24	0	17	0	15	0	6	0	0	0	2	0	328	
	11	0	0	0	1	0	2	0	1	0	4	0	0	0	4	2	3	0	1	0	1	0	2	0	0	0			0	0	30	

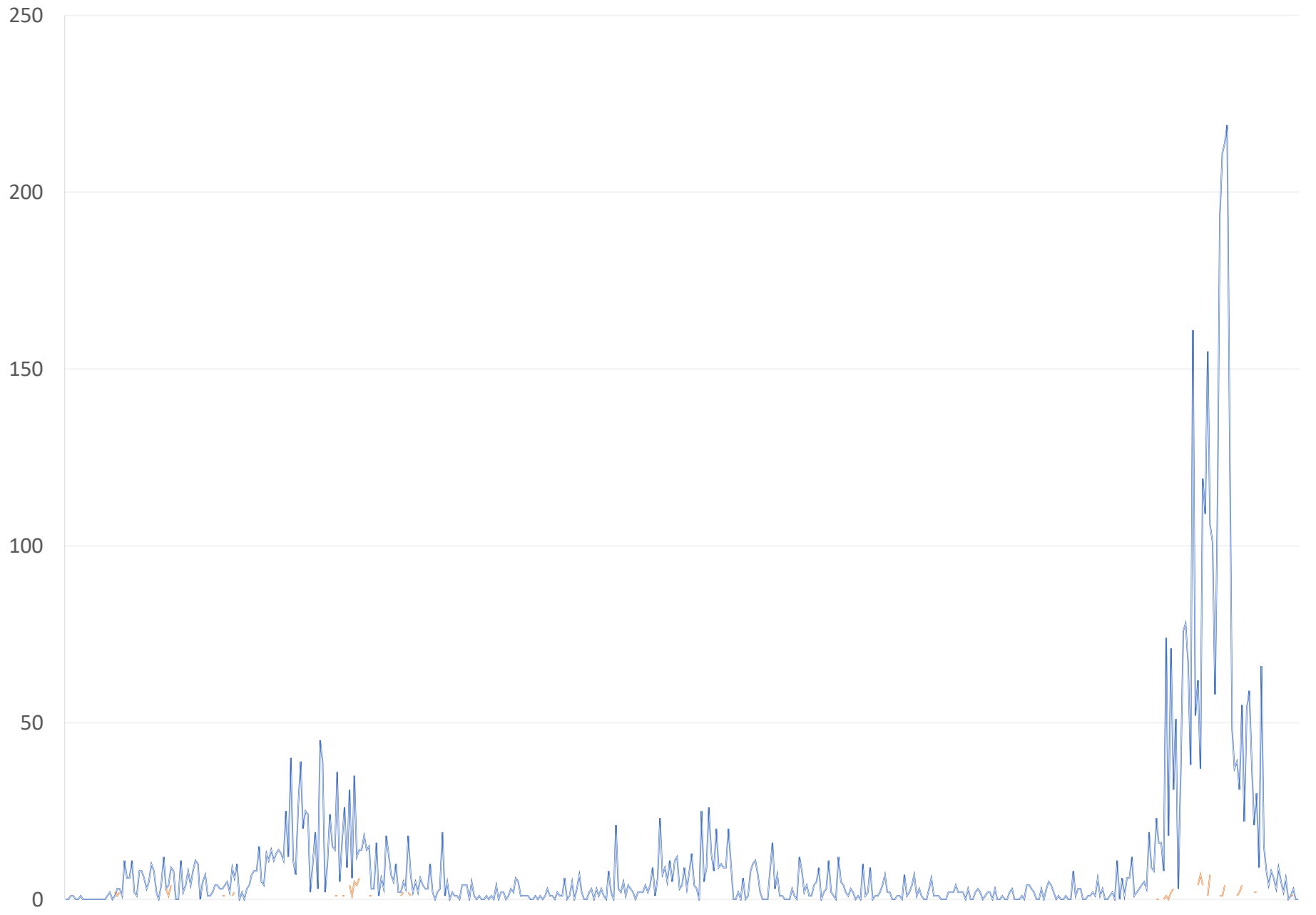
***Others include the following:**

Radiologist, Microbiologist, Epidemiologist, Dispenser, Licensed Practical Nurse, Psychosocial worker, Hygienist, Logistician, Vaccinator, Ambulance Driver, Procurement Officer, Registrar, Accountant, Secretary, Hospital Administrator, Community Health Volunteer, GIS Specialist, EOC Coordinator, M&E Officer

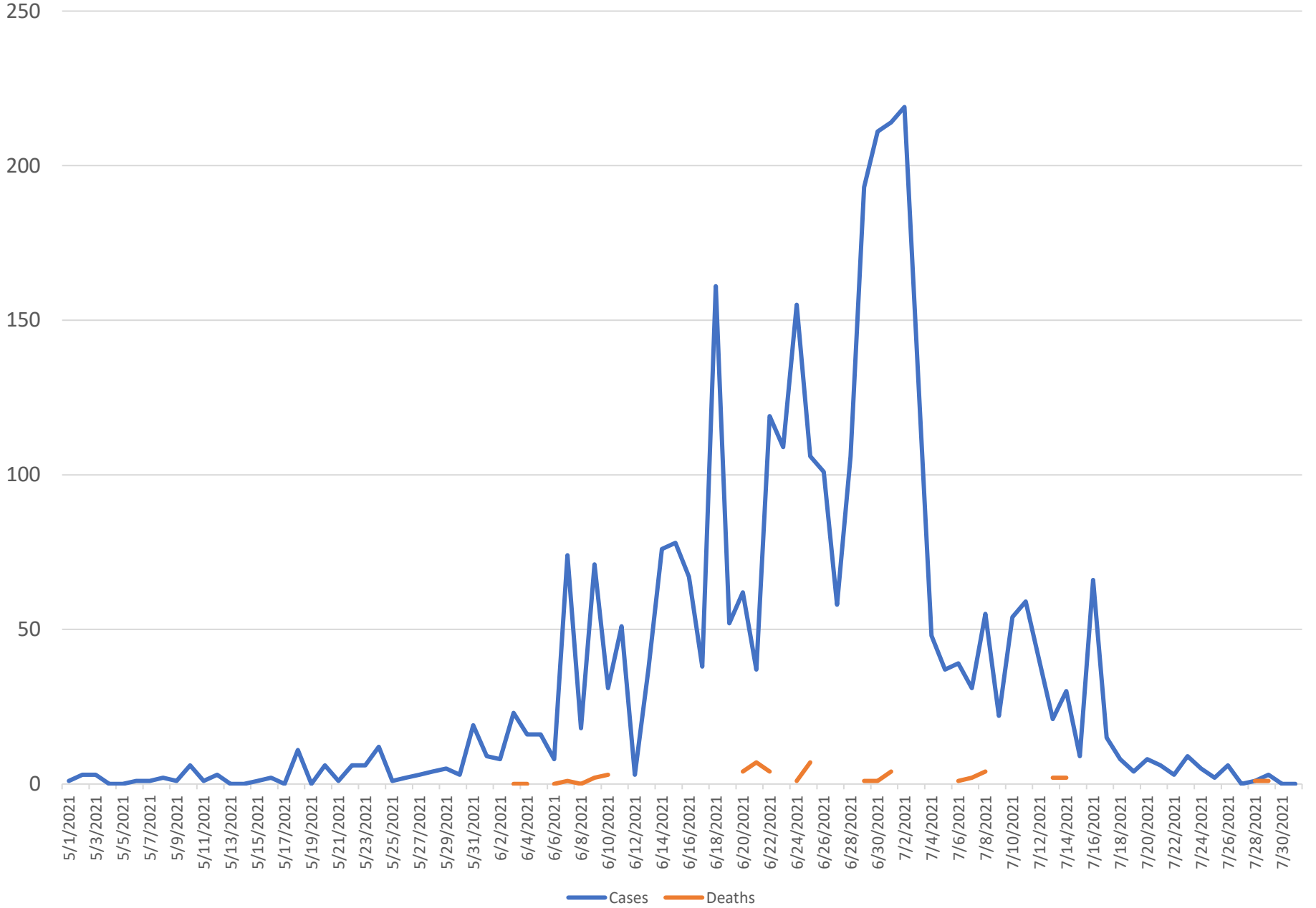
COVID-19 WEEKLY EPI-CURVE



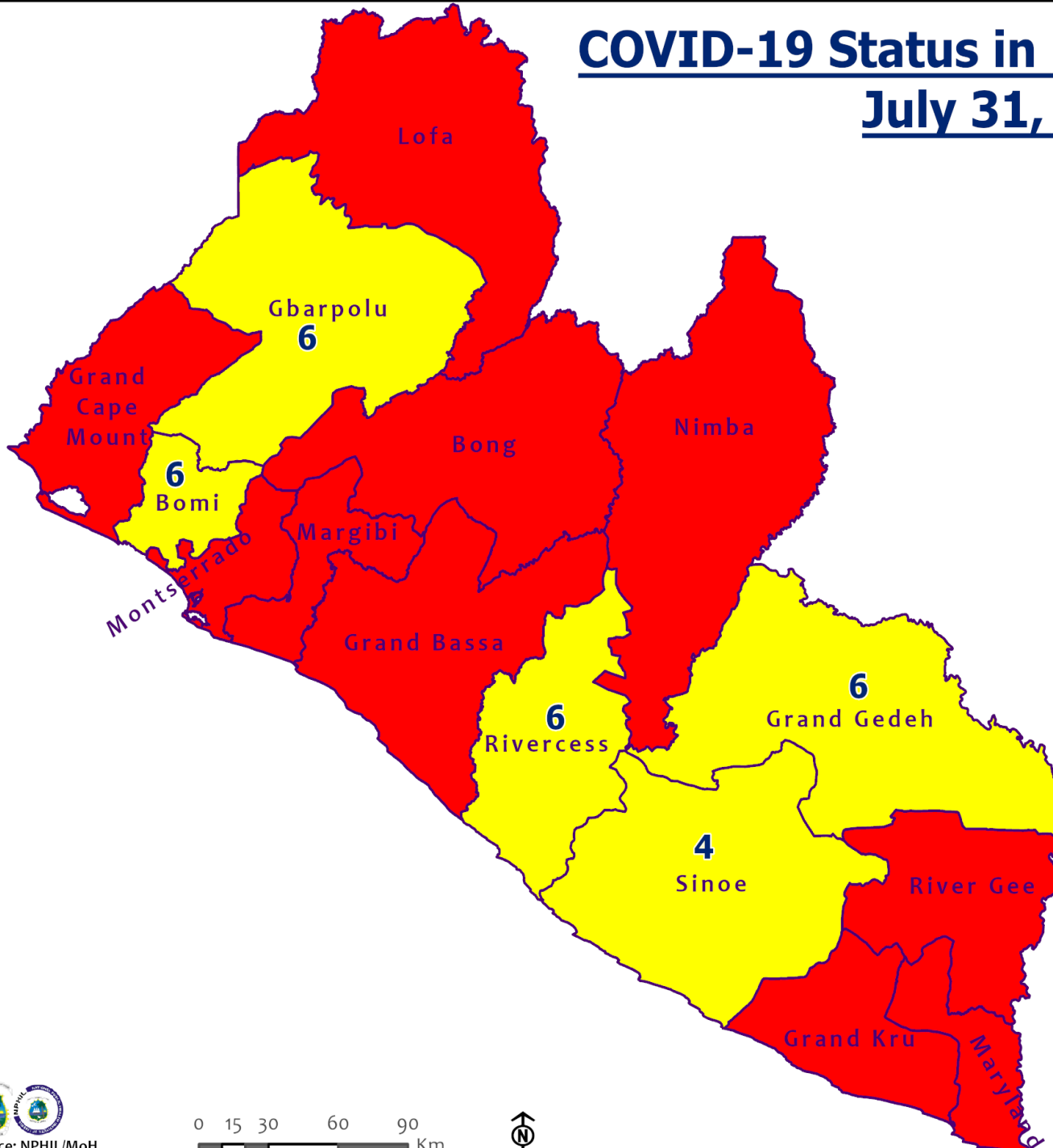
— Daily Cases — Daily Deaths



Daily Epi-Curve (May 1 - July 31, 2021)



COVID-19 Status in Liberia by County July 31, 2021



Legend

County Status

- Preparedness
- 14-Day Countdown
- Response



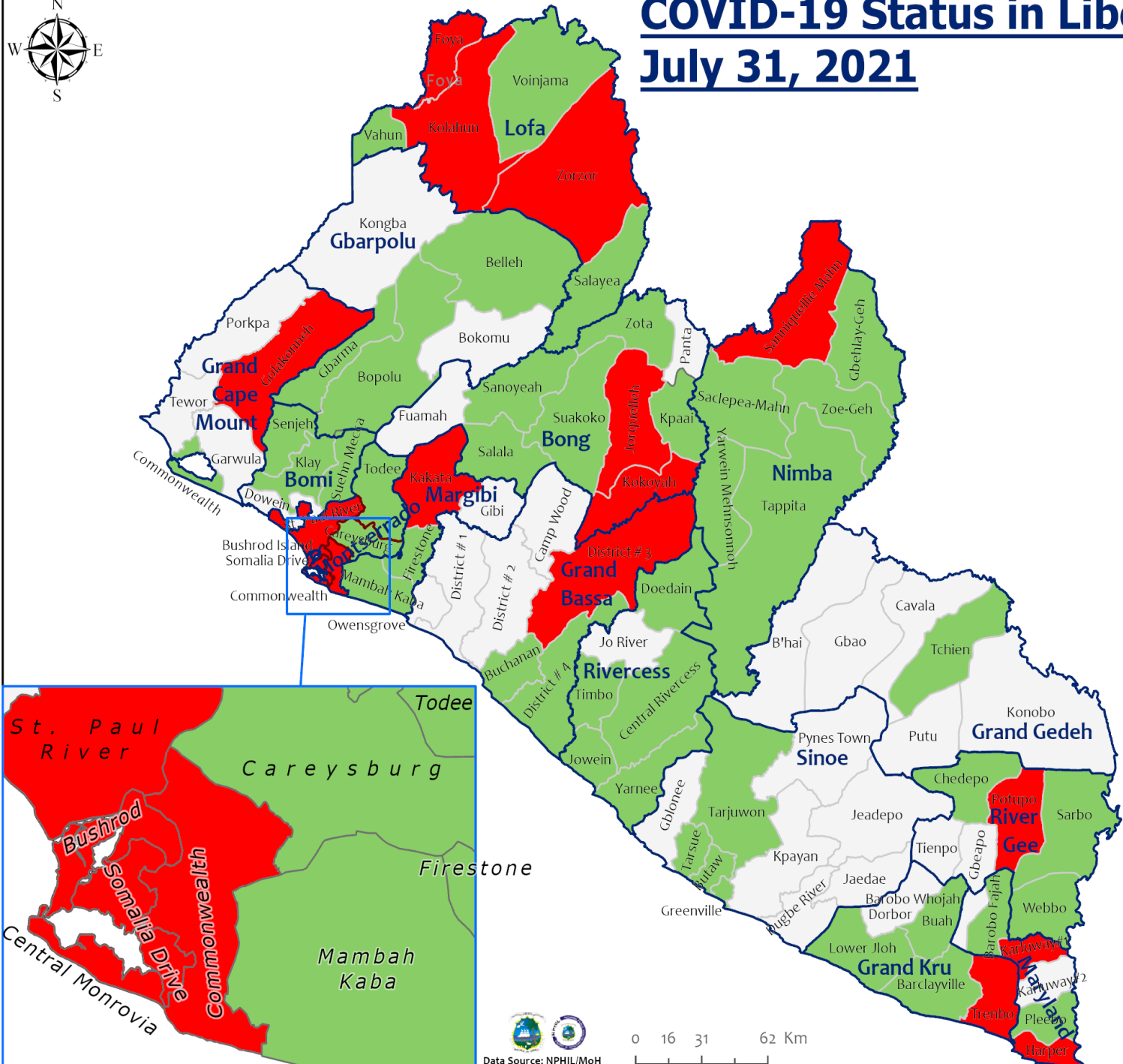
COVID-19 Status in Liberia by District

July 31, 2021



Total Cases: 5,459

Affected Counties	Cumulative Cases
Montserrado	4,466
Margibi	198
Lofa	150
Nimba	128
Bong	113
Grand Bassa	95
Bomi	61
Grand Cape Mount	52
Maryland	45
Gbarpolu	39
River Gee	38
Grand Gedeh	24
Grand Kru	22
Rivercess	16
Sinoe	12

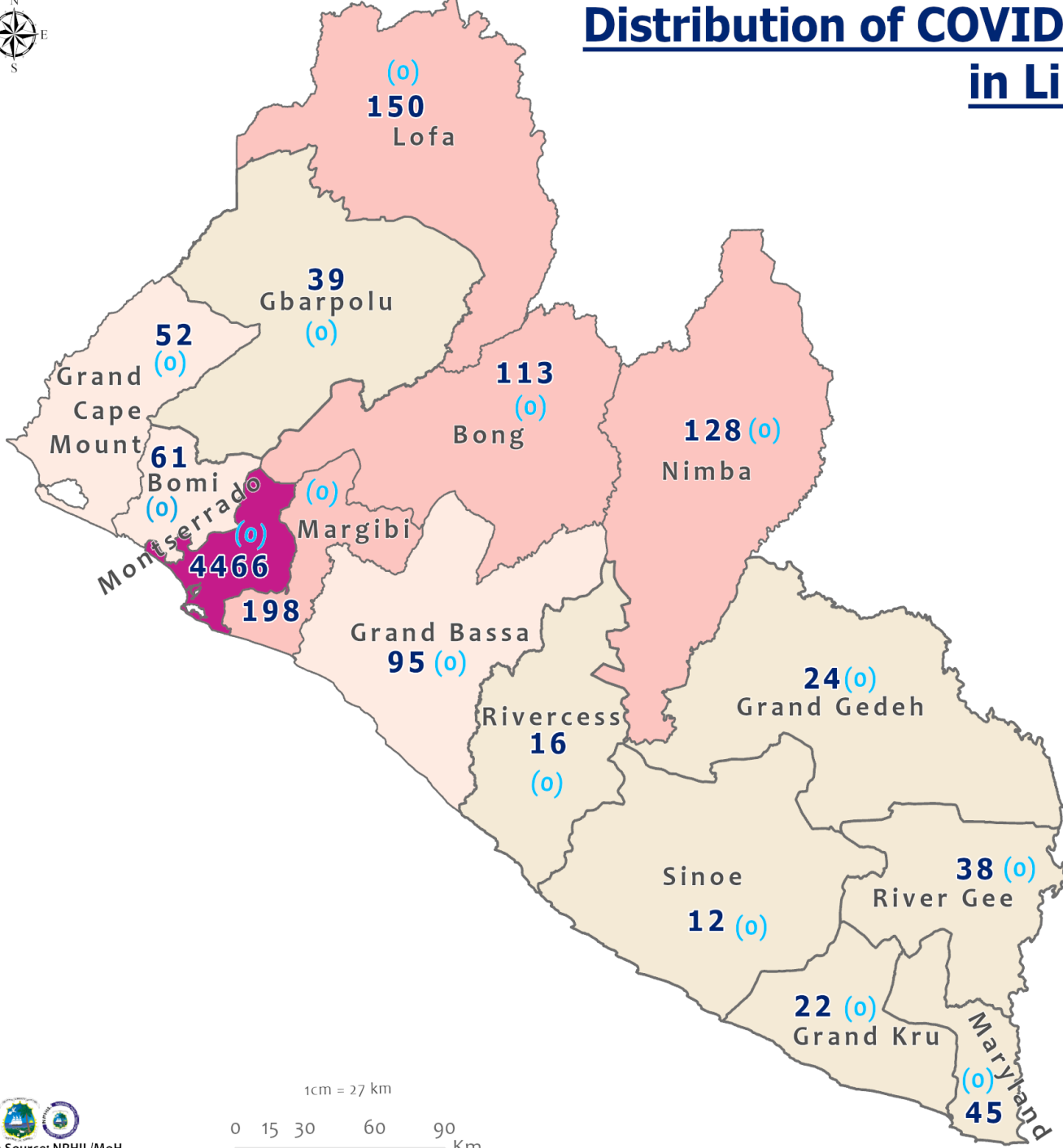


Legend

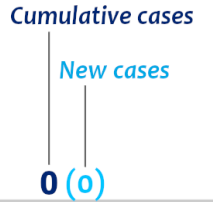
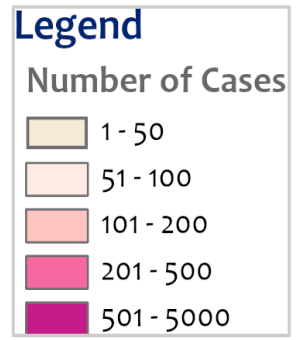
District Status

- Never had a case
- Back from recovery or first time with active case(s)
- With active cases(s)
- With recovered cases only

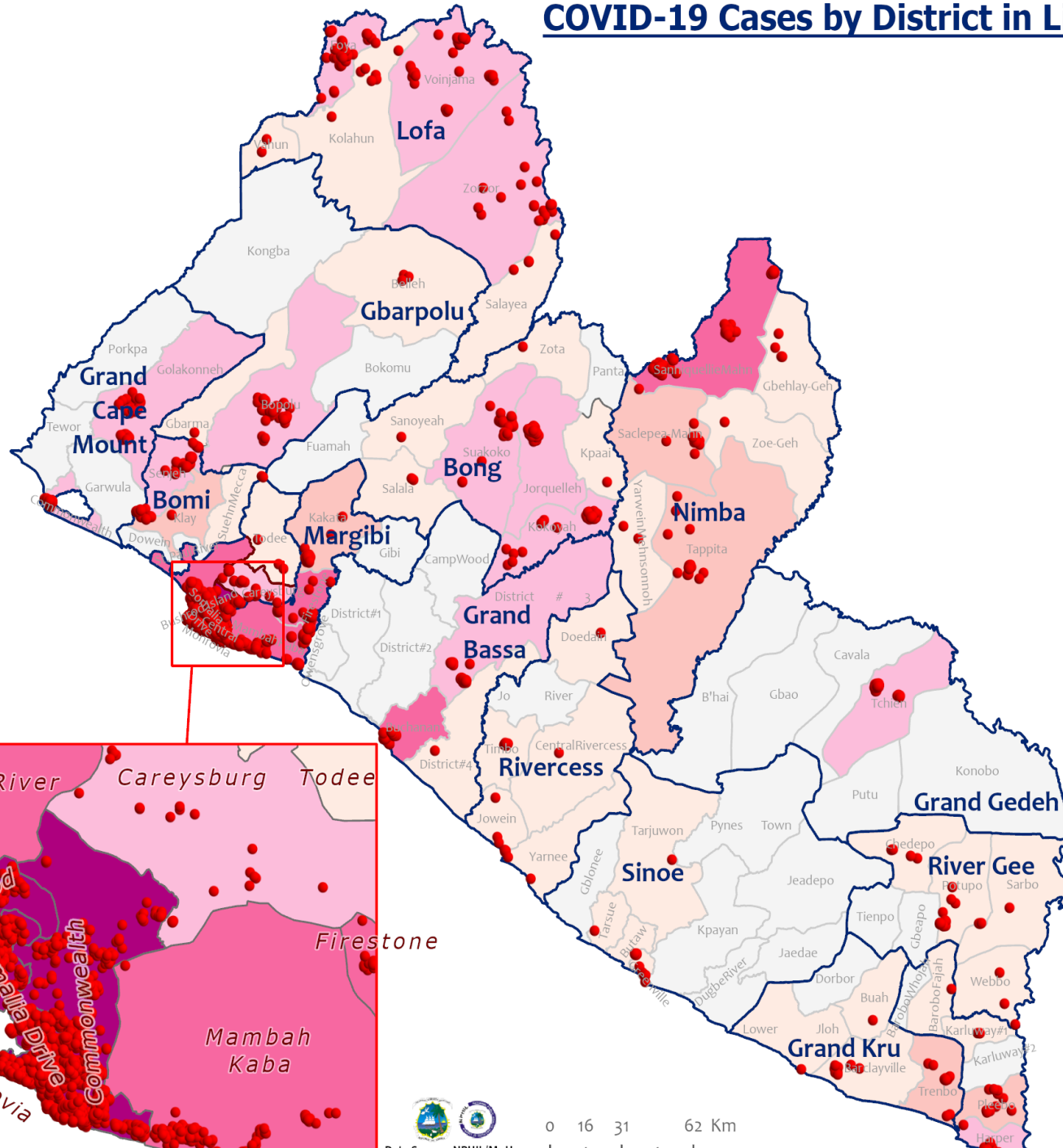
Distribution of COVID-19 Cases by County in Liberia - July 31, 2021



Total cumulative cases:
5,459
 Total new cases:
0



COVID-19 Cases by District in Liberia - July 31, 2021



Total Cases: 5,459

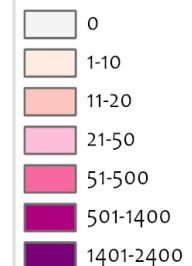
Affected Counties	Cumulative Cases
Montserrado	4,466
Margibi	198
Lofa	150
Nimba	128
Bong	113
Grand Bassa	95
Bomi	61
Grand Cape Mount	52
Maryland	45
Gbarpolu	39
River Gee	38
Grand Gedeh	24
Grand Kru	22
Rivercess	16
Sinoe	12

Legend

Case Status

- ★ New confirmed case
- Confirmed cases

Cases / District

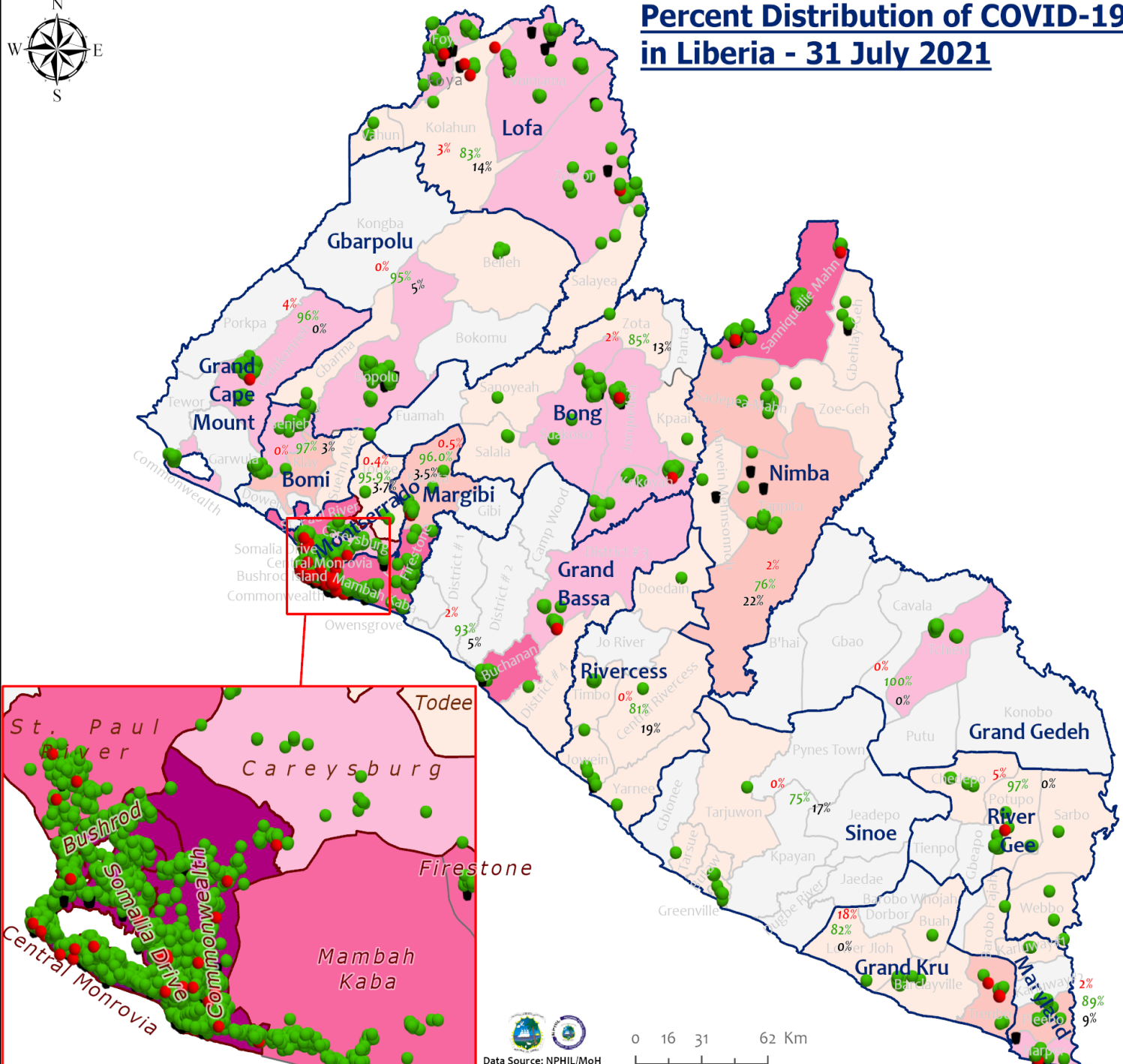


Percent Distribution of COVID-19 Cases by Status in Liberia - 31 July 2021



Total Cases: 5,459

Affected Counties	Cumulative Cases
Montserrado	4,466
Margibi	198
Lofa	150
Nimba	128
Bong	113
Grand Bassa	95
Bomi	61
Grand Cape	52
Mount	52
Maryland	45
Gbarpolu	39
River Gee	38
Grand Gedeh	24
Grand Kru	22
Rivercess	16
Sinoe	12



Legend

Case Status

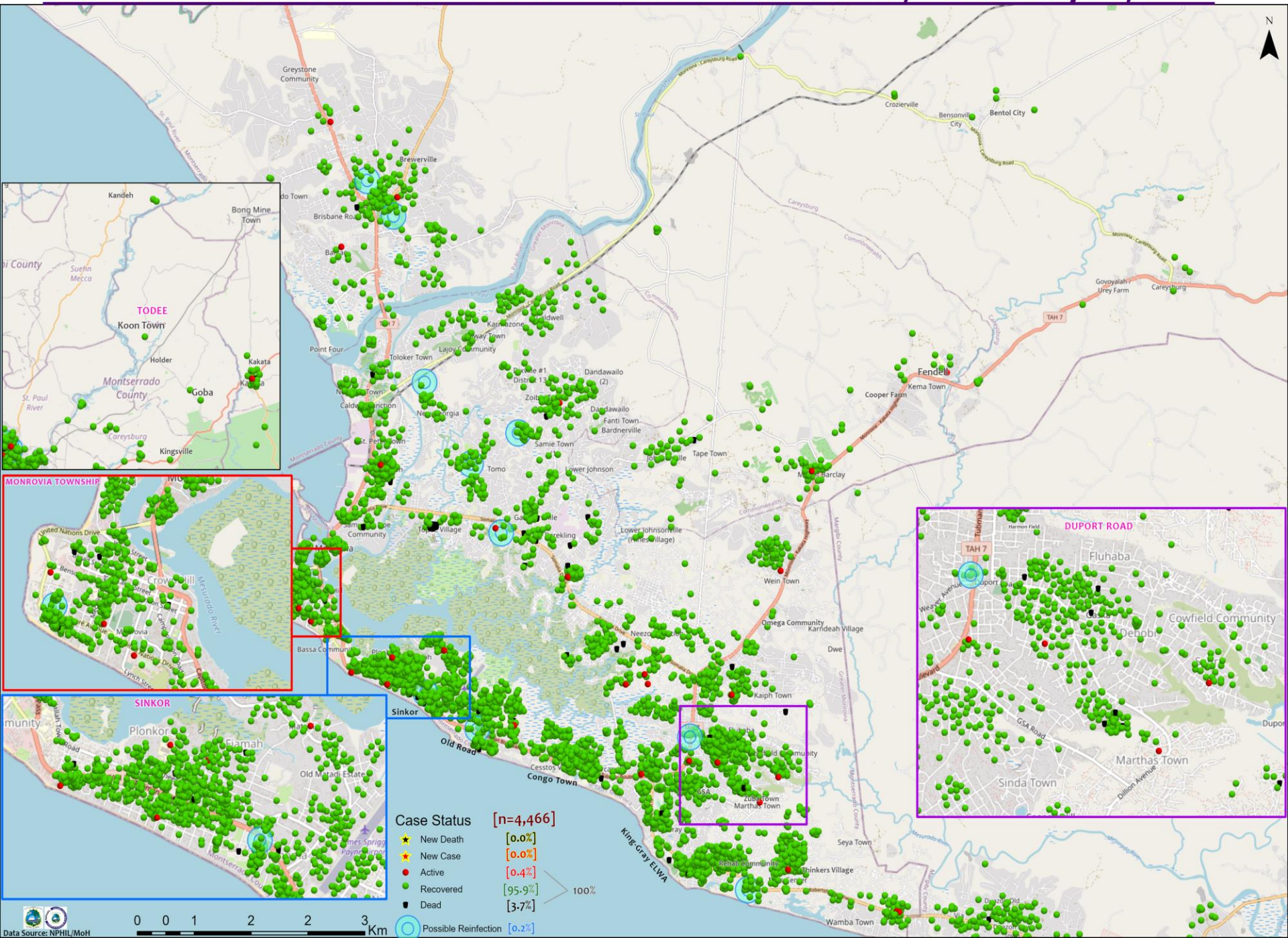
- Active
- Recovered
- Dead

[1%]
[94%]
[5%]

Cases / District

- 0
- 1-10
- 11-20
- 21-50
- 51-500
- 501-1400
- 1401-2400

Distribution of COVID-19 Cases in Montserrat Communities, Liberia July 31, 2021



Case Status [n=4,466]

★ New Death	[0.0%]
★ New Case	[0.4%]
● Active	[95.9%]
● Recovered	[3.7%]
● Dead	[0.2%]
○ Possible Reinfection	[0.2%]

Home-Base Care of COVID-19 – July 31, 2021

County	New Admissions	Currently in Admissions	No. Followed-up (In-person/phone)	Cumulative Admissions	New Recoveries	Cumulative Recoveries	Referrals to TU	Cumulative Referrals to TU	New Death	Cumulative Deaths
Montserrat	0	5	5	2241	5	2207	0	29	0	0
Nimba				0						
Bong				0						
Maryland										
Cape Mount										
Lofa										
Margibi				0						
Total:	0	5	5	2241	5	2207	0	29	0	0

Laboratory Samples Evaluated – 31 July 2021						
County	Sample Evaluated	New Positive	Repeat Positive	Initial Negative	Repeat Test Negative	Pending Lab Result
Gbarpolu	5	0	0	5	0	0
Grand Bassa	1	0	0	1	0	0
Margibi	8	0	0	8	0	0
Montserrado	112	0	0	112	0	0
TOTAL	126	0	0	126	0	0
Outgoing Traveler	125	0	0	125	0	0
Volunteer	1	0	0	1	0	0
Incoming Traveler*	107	0	0	107	0	0
NRL	123	0	0	123	0	0
AMI Lab	3	0	0	3	0	0

Summary of COVID-19 Contact Tracing in Response Counties

County	New Contacts Line listed	Cumulative Contacts	No. of Health Care Workers as Contacts	Cumulative no. of Health Care Workers as contacts	Contacts became a case	Cumulative contacts that became a case	Contacts Completed 14 Days	Cumulative Contacts Completing 14 Days	Contacts Under Follow-up	Contacts lost to Follow-up
Montserrado	0	9174	0	704	0	211	0	8929	54	6
Margibi	0	1655	0	135	0	44	0	1635	17	3
Grand Bassa	0	416	0	150	0	63	0	398	18	0
Sinoe	0	229	0	35	0	4	0	229	0	0
Lofa	0	758	0	103	0	34	0	726	32	0
Nimba	0	677	0	141	0	25	0	641	36	0
Bong	0	476	0	73	0	28	0	460	14	2
Gbarpolu	0	87	0	13	0	8	0	87	42	0
Grand Cape Mount	0	241	0	0	0	6	0	241	0	0
RiverGee	0	133	0	15	0	31	0	123	10	0
Maryland	0	433	0	86	0	24	0	244	189	0
Bomi	0	289	0	24	0	52	0	277	12	0
Rivercess	0	102	0	62	0	6	0	102	0	0
Grand Kru	0	333	0	131	0	17	0	333	0	0
Grand Gedeh	0	126	0	2	0	9	0	110	16	0
National	0	15129	0	1674	0	562	0	14535	440	11

Thank you for Listening