



# **Liberia COVID-19 Daily Sitrep 569 (October 5, 2021)**

# Summary of COVID-19 Cases by Reporting County, Liberia, 16 March 2020 – 5 October 2021

| County                  | Laboratory<br>Confirmed Cases | Confirmed Cases<br>on Contact List | Confirmed<br>Cumulative Cases |
|-------------------------|-------------------------------|------------------------------------|-------------------------------|
| <b>Bomi</b>             | 0                             | 0                                  | 61                            |
| <b>Bong</b>             | 0                             | 0                                  | 114                           |
| <b>Gbarpolu</b>         | 0                             | 0                                  | 39                            |
| <b>Grand Bassa</b>      | 0                             | 0                                  | 95                            |
| <b>Grand Cape Mount</b> | 0                             | 0                                  | 57                            |
| <b>Grand Kru</b>        | 0                             | 0                                  | 26                            |
| <b>Grand Gedeh</b>      | 0                             | 0                                  | 37                            |
| <b>Lofa</b>             | 0                             | 0                                  | 164                           |
| <b>Margibi</b>          | 0                             | 0                                  | 201                           |
| <b>Maryland</b>         | 0                             | 0                                  | 169                           |
| <b>Montserrado</b>      | <b>0</b>                      | 0                                  | <b>4556</b>                   |
| <b>Nimba</b>            | 0                             | 0                                  | 183                           |
| <b>Rivercess</b>        | 0                             | 0                                  | 16                            |
| <b>River Gee</b>        | 0                             | 0                                  | 69                            |
| <b>Sinoe</b>            | 0                             | 0                                  | 12                            |
| <b>NATIONAL</b>         | <b>0</b>                      | <b>0</b>                           | <b>5799</b>                   |

# Summary of COVID-19 Deaths by Reporting County, Liberia, 16 March 2020 – 5 October 2021

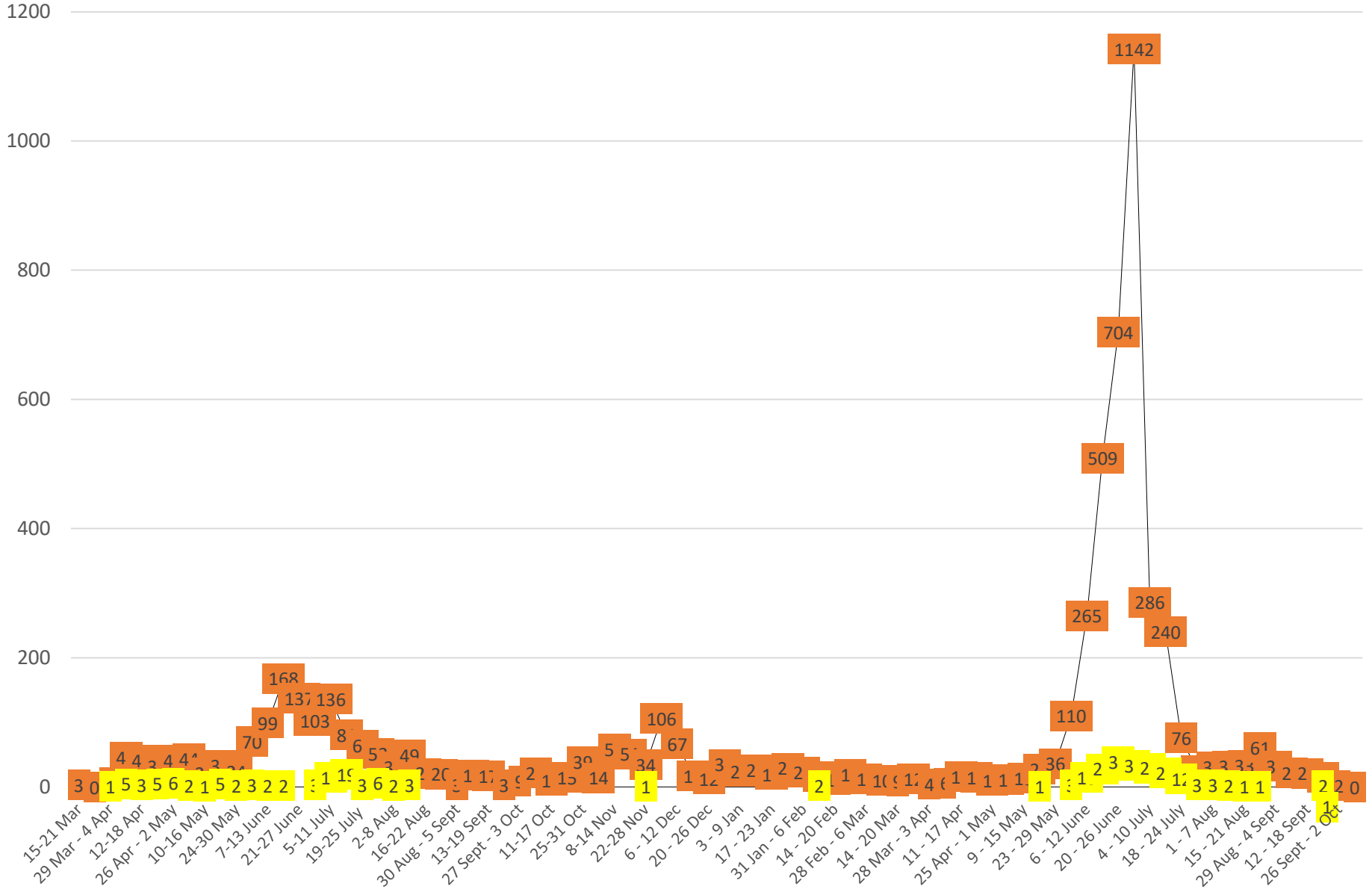
| County           | ew Suspected Deaths | COVID-19 Treatment Unit | Total in COVID-19 Treatment Unit | Health Facility | Total in Health Facility | Community | Total in Community | Confirmed Deaths on Contact List | Cumulative Deaths |
|------------------|---------------------|-------------------------|----------------------------------|-----------------|--------------------------|-----------|--------------------|----------------------------------|-------------------|
| Bomi             | 0                   | 0                       | 0                                | 0               | 2                        | 0         | 0                  | 0                                | 2                 |
| Bong             | 0                   | 0                       | 4                                | 0               | 9                        | 0         | 3                  | 0                                | 16                |
| Gbarpolu         | 0                   | 0                       | 0                                | 0               | 2                        | 0         | 0                  | 0                                | 2                 |
| Grand Bassa      | 0                   | 0                       | 0                                | 0               | 6                        | 0         | 0                  | 0                                | 6                 |
| Grand Cape Mount | 0                   | 0                       | 0                                | 0               | 0                        | 0         | 0                  | 0                                | 0                 |
| Grand Gedeh      | 0                   | 0                       | 0                                | 0               | 0                        | 0         | 0                  | 0                                | 0                 |
| Grand Kru        | 0                   | 0                       | 0                                | 0               | 0                        | 0         | 0                  | 0                                | 0                 |
| Lofa             | 0                   | 0                       | 3                                | 0               | 18                       | 0         | 14                 | 0                                | 35                |
| Maryland         | 0                   | 0                       | 4                                | 0               | 7                        | 0         | 2                  | 0                                | 13                |
| Margibi          | 0                   | 0                       | 2                                | 0               | 5                        | 0         | 0                  | 0                                | 7                 |
| Montserrado      | 0                   | 0                       | 45                               | 0               | 103                      | 0         | 18                 | 0                                | 166               |
| Nimba            | 0                   | 0                       | 8                                | 0               | 21                       | 0         | 4                  | 0                                | 33                |
| Rivercess        | 0                   | 0                       | 0                                | 0               | 2                        | 0         | 1                  | 0                                | 3                 |
| River Gee        | 0                   | 0                       | 1                                | 0               | 0                        | 0         | 0                  | 0                                | 1                 |
| Sinoe            | 0                   | 0                       | 0                                | 0               | 2                        | 0         | 0                  | 0                                | 2                 |
| <b>National</b>  | <b>0</b>            | <b>0</b>                | <b>67</b>                        | <b>0</b>        | <b>177</b>               | <b>0</b>  | <b>42</b>          | <b>0</b>                         | <b>286</b>        |

# Daily and Cumulative Healthcare Worker (HCW) COVID-19 Cases and Deaths by County, Liberia, 16 March 2020 – 5 October 2021

| County           | New Suspected & High Risk Cases (Alive) |           |          | New Suspect Death | Laboratory Confirmed Cases | Confirmed Cases on Contact List | CUMULATIVE CASES (ALIVE & DEAD) |          |
|------------------|---|-----------|----------|-------------------|----------------------------|---------------------------------|---------------------------------|----------|
|                  | Suspect                                 | High Risk | Total    |                   |                            |                                 | Confirmed                       | Deaths   |
| Bomi             | 0                                       | 0         | 0        | 0                 | 0                          | 0                               | 19                              | 0        |
| Bong             | 0                                       | 0         | 0        | 0                 | 0                          | 0                               | 29                              | 4        |
| Gbarpolu         | 0                                       | 0         | 0        | 0                 | 0                          | 0                               | 1                               | 1        |
| Grand Bassa      | 0                                       | 0         | 0        | 0                 | 0                          | 0                               | 26                              | 0        |
| Grand Gedeh      | 0                                       | 0         | 0        | 0                 | 0                          | 0                               | 2                               | 0        |
| Grand Kru        | 0                                       | 0         | 0        | 0                 | 0                          | 0                               | 14                              | 0        |
| Grand Cape Mount | 0                                       | 0         | 0        | 0                 | 0                          | 0                               | 0                               | 0        |
| Lofa             | 0                                       | 0         | 0        | 0                 | 0                          | 0                               | 30                              | 0        |
| Margibi          | 0                                       | 0         | 0        | 0                 | 0                          | 0                               | 13                              | 1        |
| Maryland         | 0                                       | 0         | 0        | 0                 | 0                          | 0                               | 18                              | 0        |
| Montserrado      | 0                                       | 0         | 0        | 0                 | 0                          | 0                               | 145                             | 2        |
| Nimba            | 0                                       | 0         | 0        | 0                 | 0                          | 0                               | 30                              | 0        |
| Rivercess        | 0                                       | 0         | 0        | 0                 | 0                          | 0                               | 6                               | 0        |
| River Gee        | 0                                       | 0         | 0        | 0                 | 0                          | 0                               | 10                              | 0        |
| Sinoe            | 0                                       | 0         | 0        | 0                 | 0                          | 0                               | 3                               | 0        |
| <b>NATIONAL</b>  | <b>0</b>                                | <b>0</b>  | <b>0</b> | <b>0</b>          | <b>0</b>                   | <b>0</b>                        | <b>346</b>                      | <b>8</b> |

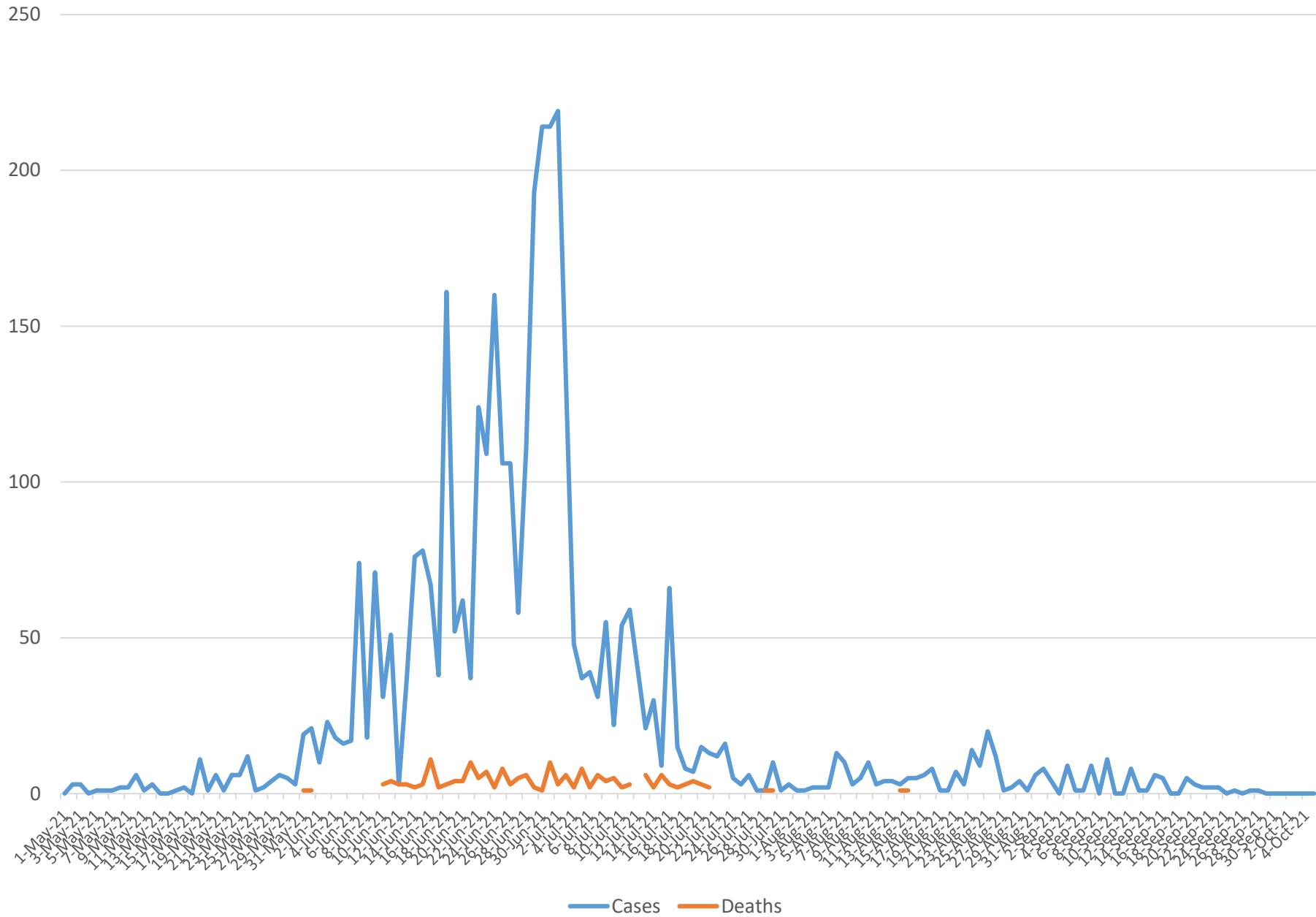


# Weekly Epi-Curve

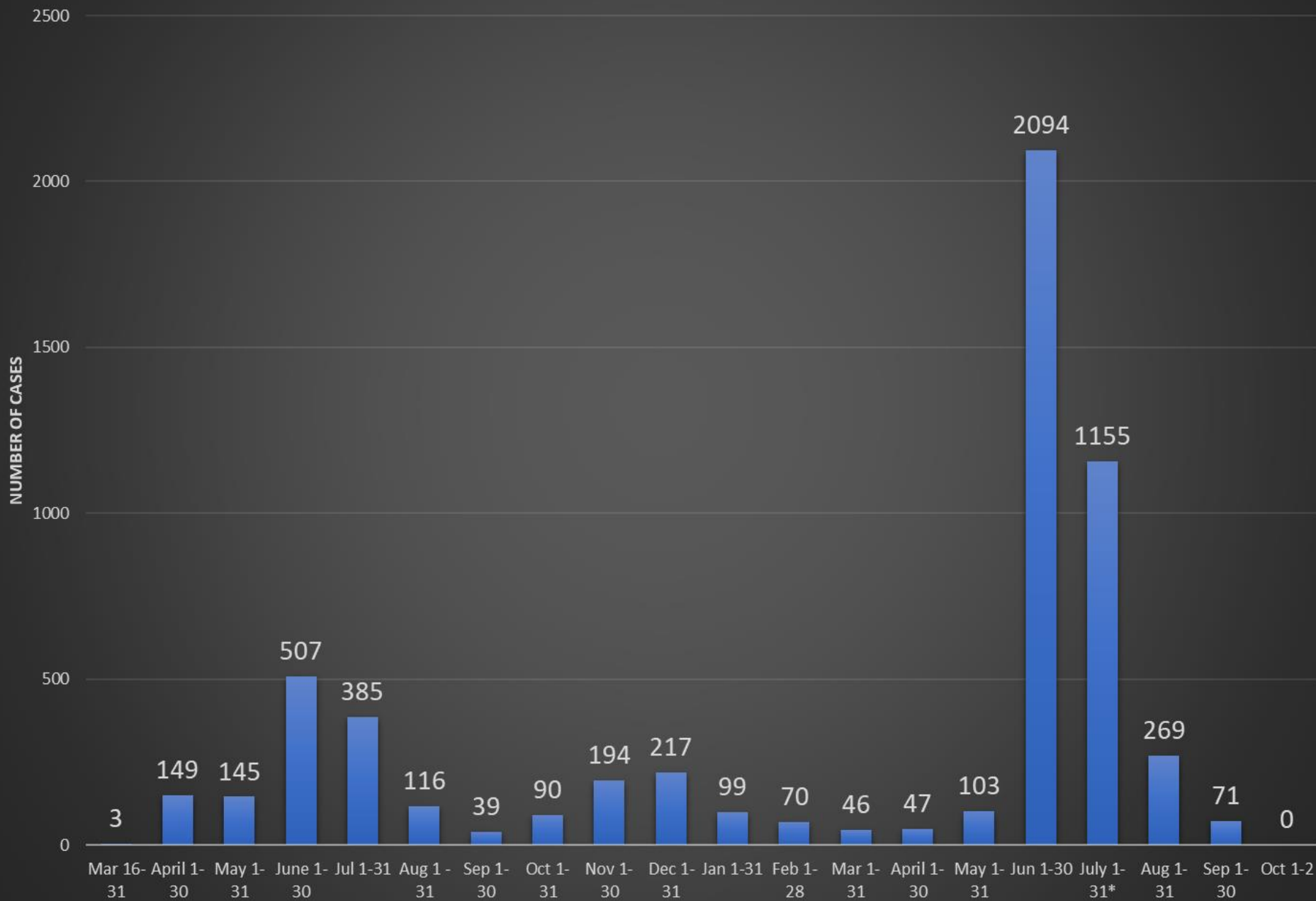


— Cases — Deaths

# 3rd Wave Daily Cases and Deaths

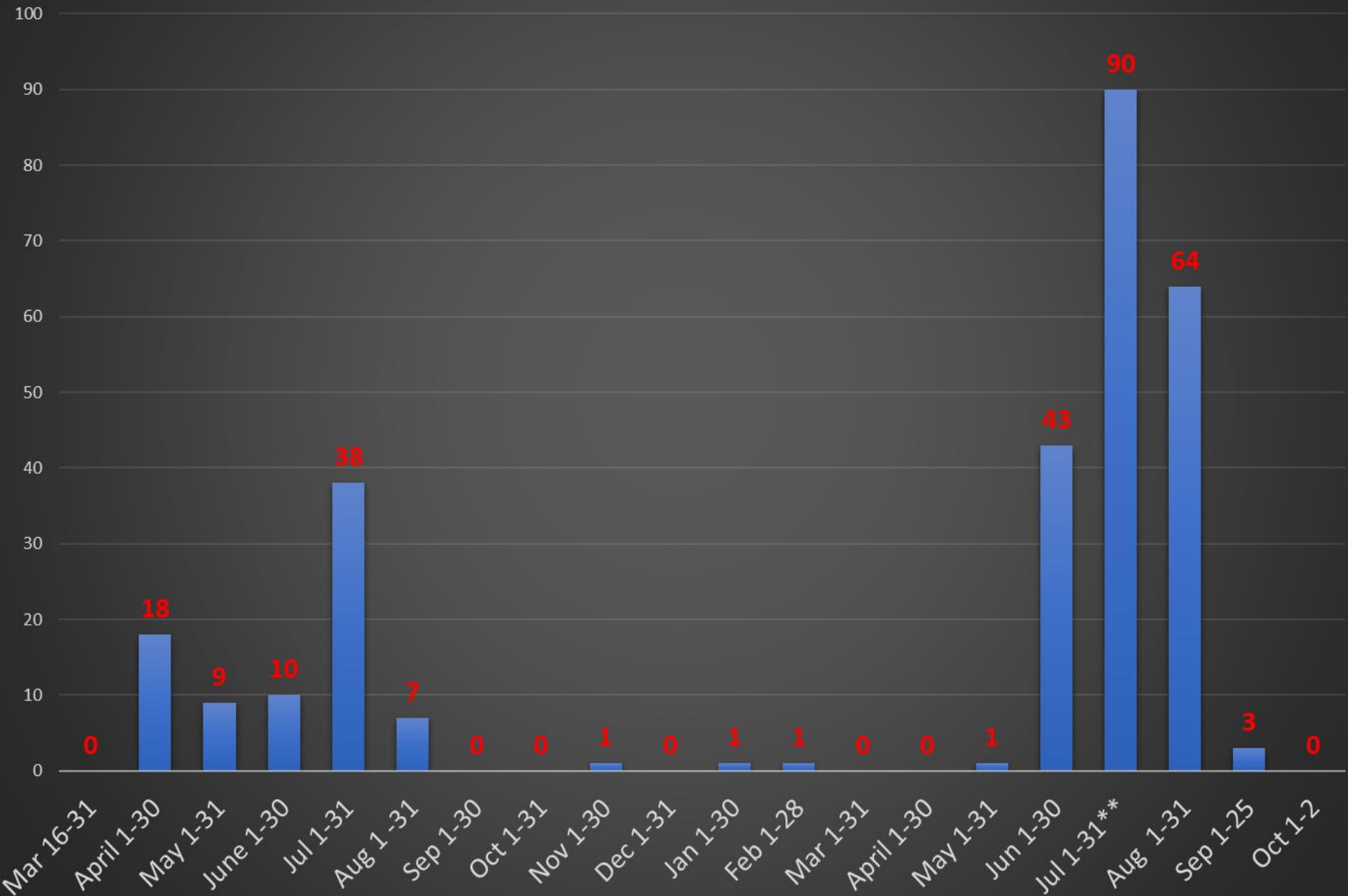


# Full and Partial Monthly Confirmed COVID-19 Cases in Liberia - Mar 16, 2020 - Oct 2, 2021. (n= 5,799)

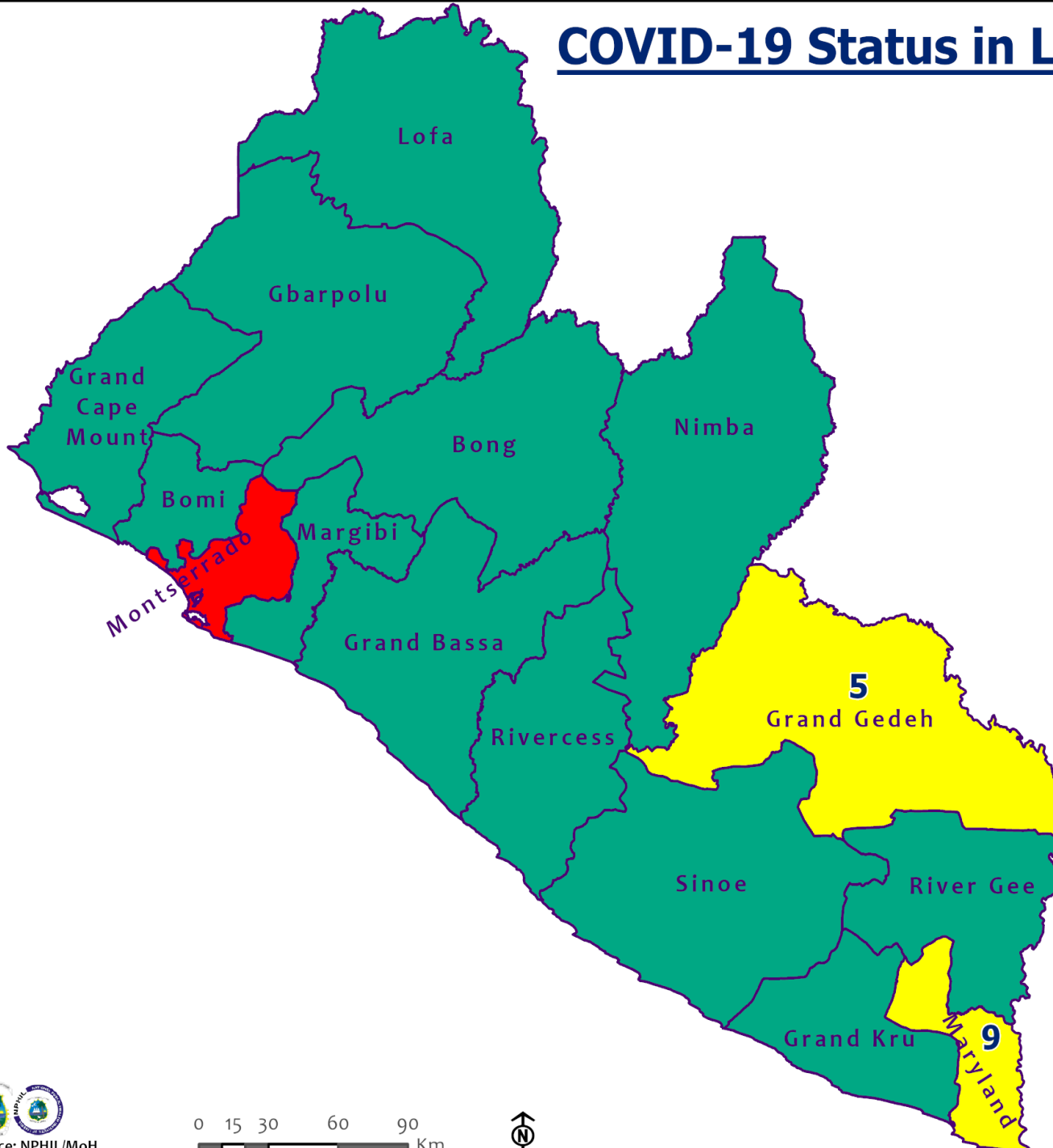




# Full and Partial Monthly COVID-19 Reported Deaths in Liberia - Mar 16, 2020 - Oct 2, 2021. (n = 286)



# COVID-19 Status in Liberia by County October 5, 2021



**Legend**

**County Status**

- Preparedness
- 14-Day Countdown
- Response



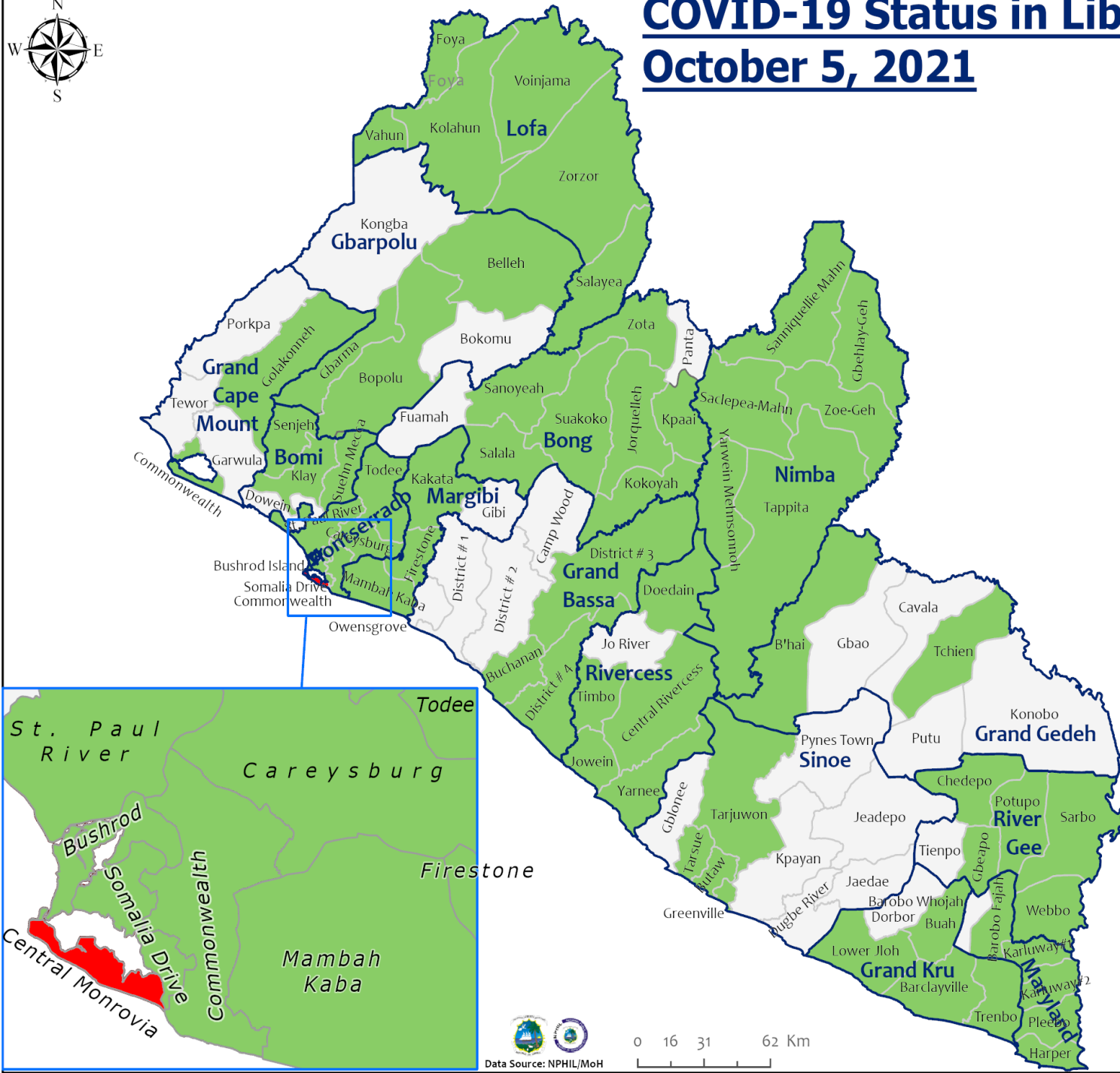
# COVID-19 Status in Liberia by District

## October 5, 2021



**Total Cases: 5,799**

| Affected Counties | Cumulative Cases |
|-------------------|------------------|
| Montserrado       | 4,556            |
| Margibi           | 201              |
| Nimba             | 183              |
| Maryland          | 169              |
| Lofa              | 164              |
| Bong              | 114              |
| Grand Bassa       | 95               |
| River Gee         | 69               |
| Boni              | 61               |
| Grand Cape Mount  | 57               |
| Gbarpolu          | 39               |
| Grand Gedeh       | 37               |
| Grand Kru         | 26               |
| Rivercess         | 16               |
| Sinoe             | 12               |

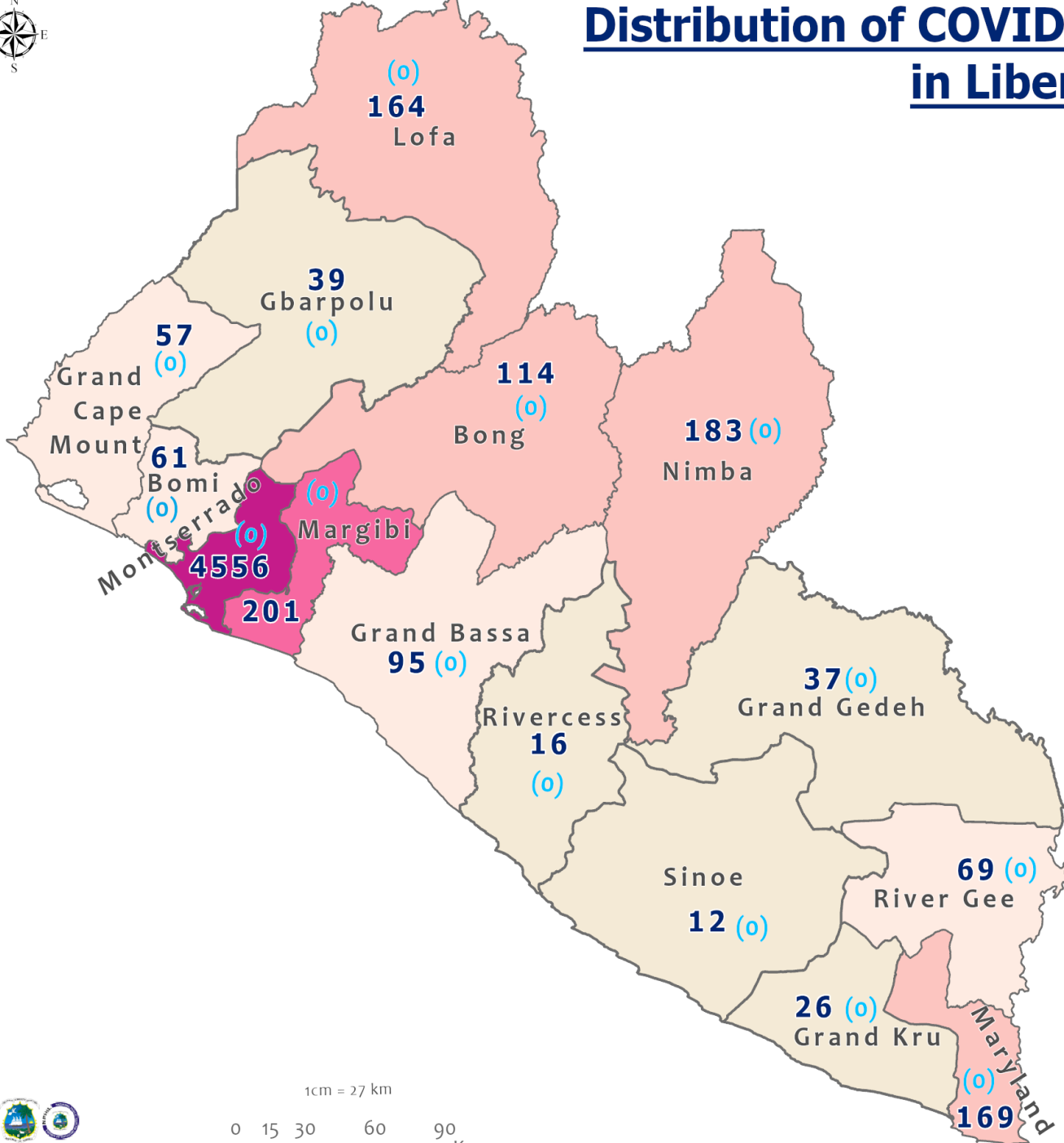


### Legend

#### District Status

- Never had a case
- Back from recovery or first time with active case(s)
- With active cases(s)
- With recovered cases only

# Distribution of COVID-19 Cases by County in Liberia - October 5, 2021



**Total cumulative cases:**  
**5,799**

**Total new cases:**  
**0**

**Legend**

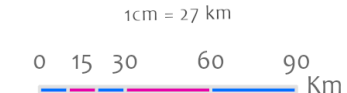
**Number of Cases**

- 1 - 50
- 51 - 100
- 101 - 200
- 201 - 500
- 501 - 5000

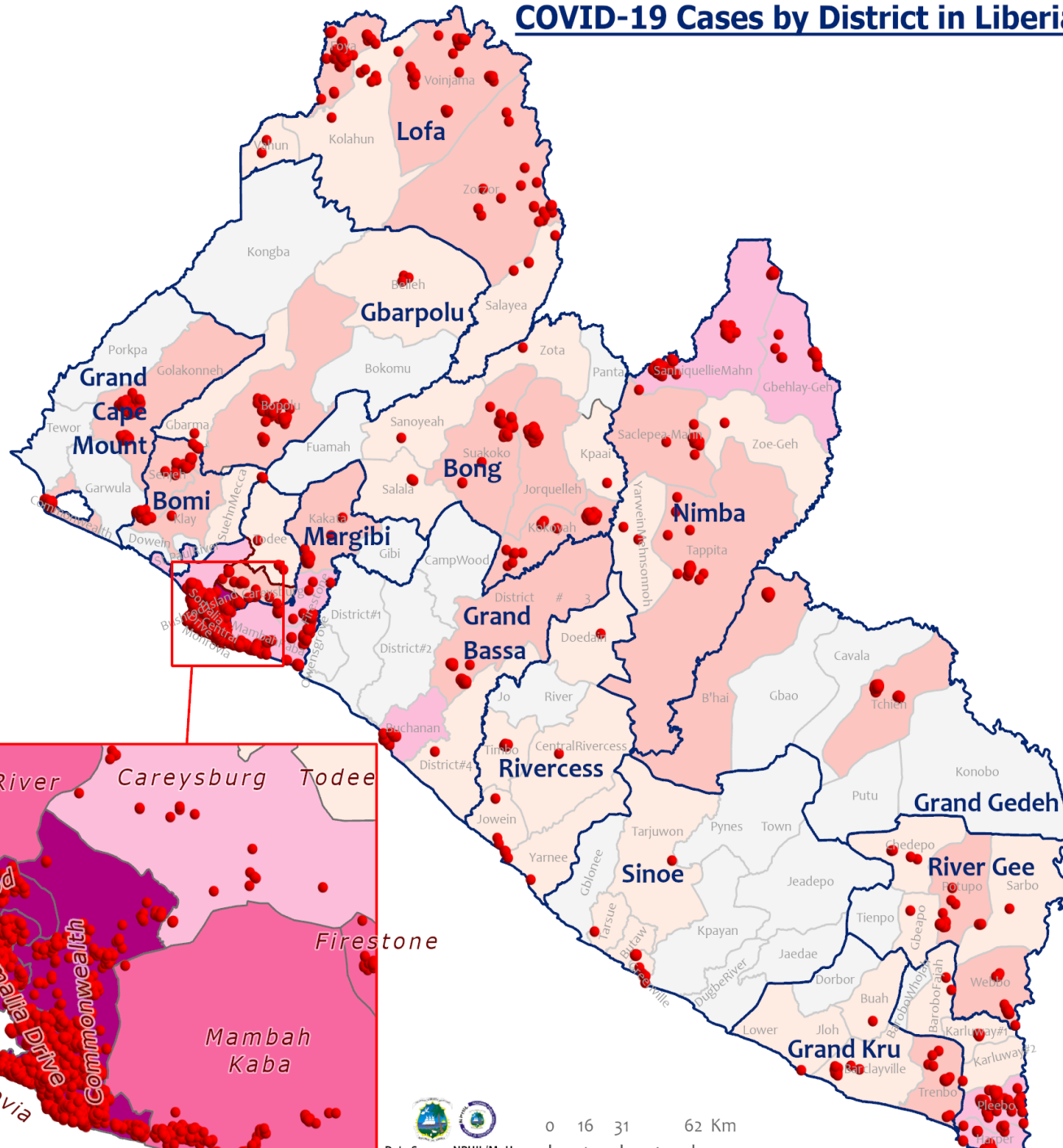
**Cumulative cases**

**New cases**

**0 (0)**



# COVID-19 Cases by District in Liberia - October 5, 2021



**Total Cases: 5,799**

| Affected Counties | Cumulative Cases |
|-------------------|------------------|
| Montserrado       | 4,556            |
| Margibi           | 201              |
| Nimba             | 183              |
| Maryland          | 169              |
| Lofa              | 164              |
| Bong              | 114              |
| Grand Bassa       | 95               |
| River Gee         | 69               |
| Bomi              | 61               |
| Grand Cape Mount  | 57               |
| Gbarpolu          | 39               |
| Grand Gedeh       | 37               |
| Grand Kru         | 26               |
| Rivercess         | 16               |
| Sinoe             | 12               |

**Legend**

**Case Status**

- ★ New confirmed case
- Confirmed cases

**Cases / District**

- 0
- 1-10
- 11-50
- 51-500
- 501-1000
- 1001-1500
- 1501-2000

# Percent Distribution of COVID-19 Cases by Status in Liberia - 5 October 2021



**Total Cases: 5,799**

| Affected Counties | Cumulative Cases |
|-------------------|------------------|
| Montserrado       | 4,556            |
| Margibi           | 201              |
| Nimba             | 183              |
| Maryland          | 169              |
| Lofa              | 164              |
| Bong              | 114              |
| Grand Bassa       | 95               |
| River Gee         | 69               |
| Bomi              | 61               |
| Grand Cape        | 57               |
| Mount             | 57               |
| Gbarpolu          | 39               |
| Grand Gedeh       | 37               |
| Grand Kru         | 26               |
| Rivercess         | 16               |
| Sinoe             | 12               |

## Legend

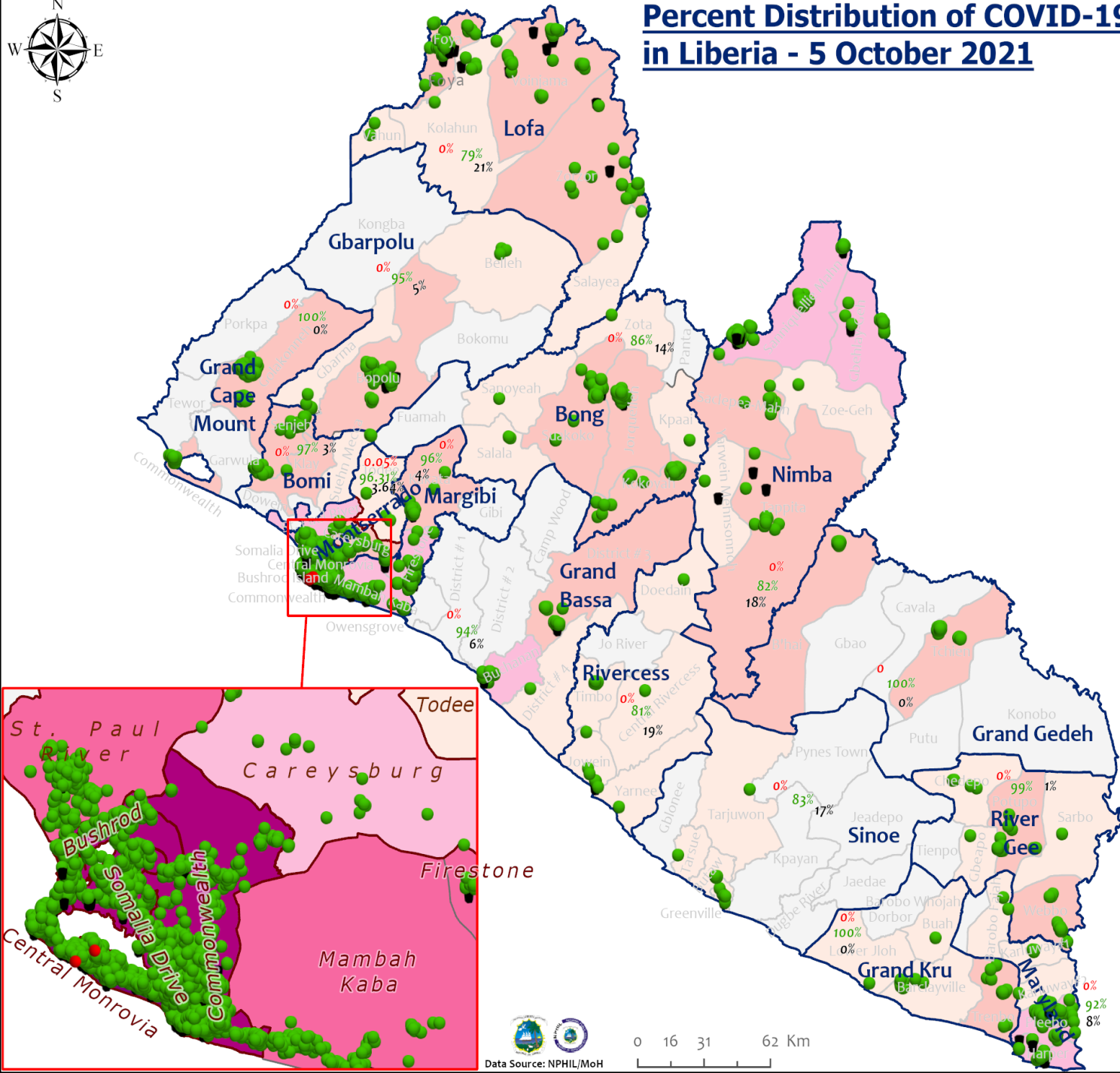
### Case Status

- Active
- Recovered
- Dead

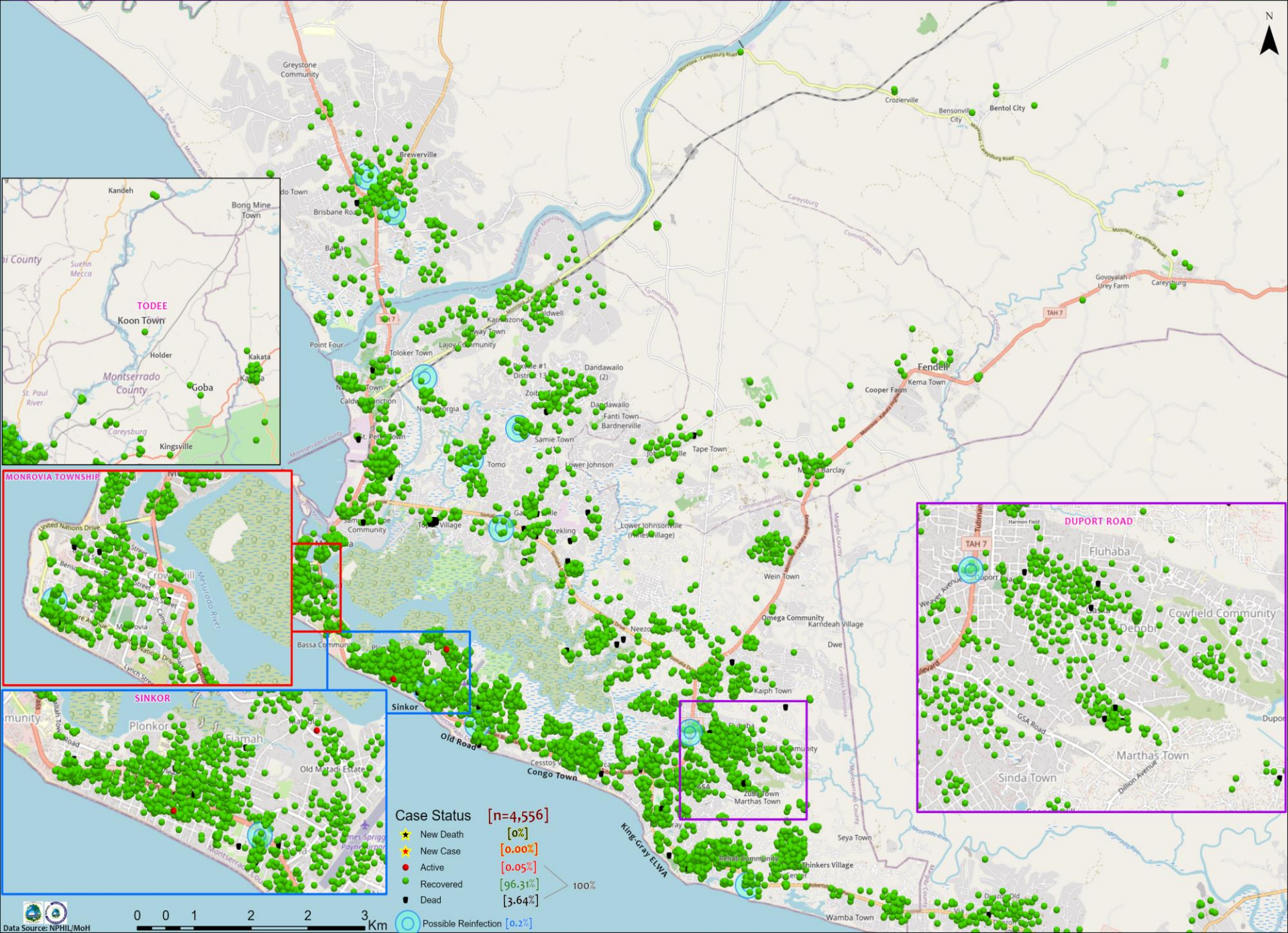
[0.03%]  
[95.04%]  
[4.93%]

### Cases / District

- 0
- 1-10
- 11-50
- 51-500
- 501-1000
- 1001-1500
- 1501-2000



# Distribution of COVID-19 Cases in Montserrado Communities, Liberia October 5, 2021



**Case Status** [n=4,556]

|                        |          |
|------------------------|----------|
| ★ New Death            | [0%]     |
| ★ New Case             | [0.00%]  |
| ● Active               | [0.05%]  |
| ● Recovered            | [96.31%] |
| ● Dead                 | [3.64%]  |
| ○ Possible Reinfection | [0.2%]   |

100%

**Summary of confirmed, recovered, active, and dead cases by reporting counties, Liberia, 16 March 2020 – 5 October 2021**

| County           | Confirmed Cases |             | Recovered Cases |             | Active Cases | Dead Cases |            |
|------------------|-----------------|-------------|-----------------|-------------|--------------|------------|------------|
|                  | New             | Cum         | New             | Cum         |              | New        | Cum        |
| Bomi             | 0               | 61          | 0               | 59          | 0            | 0          | 2          |
| Bong             | 0               | 114         | 0               | 98          | 0            | 0          | 16         |
| Gbarpolu         | 0               | 39          | 0               | 37          | 0            | 0          | 2          |
| Grand Bassa      | 0               | 95          | 0               | 89          | 0            | 0          | 6          |
| Grand Cape Mount | 0               | 57          | 0               | 57          | 0            | 0          | 0          |
| Grand Gedeh      | 0               | 37          | 0               | 37          | 0            | 0          | 0          |
| Grand Kru        | 0               | 26          | 0               | 26          | 0            | 0          | 0          |
| Lofa             | 0               | 164         | 0               | 129         | 0            | 0          | 35         |
| Margibi          | 0               | 201         | 0               | 194         | 0            | 0          | 7          |
| Maryland         | 0               | 169         | 0               | 156         | 0            | 0          | 13         |
| Montserrado      | 0               | 4556        | 0               | 4386        | 4            | 0          | 166        |
| Nimba            | 0               | 183         | 0               | 150         | 0            | 0          | 33         |
| Rivercess        | 0               | 16          | 0               | 13          | 0            | 0          | 3          |
| River Gee        | 0               | 69          | 0               | 68          | 0            | 0          | 1          |
| Sinoe            | 0               | 12          | 0               | 10          | 0            | 0          | 2          |
| <b>National</b>  | <b>0</b>        | <b>5799</b> | <b>0</b>        | <b>5509</b> | <b>4</b>     | <b>0</b>   | <b>286</b> |



## Home-Base Care of COVID-19 – 5 October 2021

| County        | New Admissions | Currently in Admissions | No. Followed-up (In-person/Phone) | Cumulative Admissions | New Recoveries | Cumulative Recoveries | Referrals to TU | Cumulative Referrals to TU | New Death | Cumulative Deaths |
|---------------|----------------|-------------------------|-----------------------------------|-----------------------|----------------|-----------------------|-----------------|----------------------------|-----------|-------------------|
| Montserrat    | 0              | 0                       | 0                                 | 2236                  | 0              | 2207                  | 0               | 29                         | 0         | 0                 |
| Nimba         |                |                         |                                   | 0                     |                |                       |                 |                            |           |                   |
| Bong          |                |                         |                                   | 0                     |                |                       |                 |                            |           |                   |
| Maryland      |                |                         |                                   |                       |                |                       |                 |                            |           |                   |
| Cape Mount    |                |                         |                                   |                       |                |                       |                 |                            |           |                   |
| Lofa          |                |                         |                                   |                       |                |                       |                 |                            |           |                   |
| Margibi       |                |                         |                                   | 0                     |                |                       |                 |                            |           |                   |
| <b>Total:</b> | 0              | 0                       | 0                                 | 2236                  | 0              | 2207                  | 0               | 29                         | 0         | 0                 |

# Laboratory Samples Evaluated – 05 October 2021

| <b>County</b>             | <b>Sample Evaluated</b> | <b>New Positive</b> | <b>Repeat Positive</b> | <b>Initial Negative</b> | <b>Repeat Test Negative</b> | <b>Pending Lab Result</b> |
|---------------------------|-------------------------|---------------------|------------------------|-------------------------|-----------------------------|---------------------------|
| <b>Grand Bassa</b>        | 1                       | 0                   | 0                      | 1                       | 0                           | 0                         |
| <b>Margibi</b>            | 8                       | 0                   | 0                      | 8                       | 0                           | 0                         |
| <b>Montserrado</b>        | 140                     | 0                   | 0                      | 140                     | 0                           | 0                         |
| <b>Nimba</b>              | 5                       | 0                   | 0                      | 5                       | 0                           | 0                         |
| <b>TOTAL</b>              | <b>154</b>              | <b>0</b>            | <b>0</b>               | <b>154</b>              | <b>0</b>                    | <b>0</b>                  |
| <b>Outgoing Traveler</b>  | 135                     | 0                   | 0                      | 135                     | 0                           | 0                         |
| <b>Volunteer</b>          | 19                      | 0                   | 0                      | 19                      | 0                           | 0                         |
| <b>Incoming Traveler*</b> | 124                     | 0                   | 0                      | 124                     | 0                           | 0                         |
| <b>NRL</b>                | 128                     | 0                   | 0                      | 128                     | 0                           | 0                         |
| <b>US Embassy Lab</b>     | 1                       | 0                   | 0                      | 1                       | 0                           | 0                         |
| <b>UN Clinic</b>          | 7                       | 0                   | 0                      | 7                       | 0                           | 0                         |
| <b>C. H. Rennie</b>       | 8                       | 0                   | 0                      | 8                       | 0                           | 0                         |
| <b>PREVAIL-JFK</b>        | 10                      | 0                   | 0                      | 10                      | 0                           | 0                         |

# COVID-19 Samples Tested by category, Oct 4-5, 2021

| Category Tested               | Total      | Positive |          | Negative   |            | Cumulative Test/100,000 pop./day |
|-------------------------------|------------|----------|----------|------------|------------|----------------------------------|
|                               |            | PCR      | RDT      | PCR        | RDT        |                                  |
| Incoming Travelers            | 317        | 0        | 0        | 0          | 317        | 16 test                          |
| Outgoing Travelers            | 312        | 0        | 0        | 312        | 0          |                                  |
| Voluntary and Suspected cases | 61         | 0        | 0        | 36         | 25         |                                  |
| AFI Project                   | 12         | 0        | 0        | 12         | 0          |                                  |
| <b>Total</b>                  | <b>702</b> | <b>0</b> | <b>0</b> | <b>360</b> | <b>342</b> |                                  |

Daily Positivity rate PCR&RDT = 0.0%

# Summary of COVID-19 Contact Tracing in Response Counties

| County           | New Contacts Line listed | Cumulative Contacts | No. of Health Care Workers as Contacts | Cumulative no. of Health Care Workers as contacts | Contacts became a case | Cumulative contacts that became a case | Contacts Completed 14 Days | Cumulative Contacts Completing 14 Days | Contacts Under Follow-up | Contacts lost to Follow-up |
|------------------|--------------------------|---------------------|--|---|------------------------|--|----------------------------|--|--------------------------|----------------------------|
| Montserratado    | 0                        | 9271                | 0                                      | 711   | 0                      | 211                                    | 0                          | 9042                                   | 12                       | 6                          |
| Margibi          | 0                        | 1655                | 0                                      | 135   | 0                      | 44                                     | 0                          | 1641                                   | 0                        | 3                          |
| Grand Bassa      | 0                        | 416                 | 0                                      | 150   | 0                      | 63                                     | 0                          | 398                                    | 0                        | 0                          |
| Sinoe            | 0                        | 229                 | 0                                      | 35  | 0                      | 4                                      | 0                          | 229                                    | 0                        | 0                          |
| Lofa             | 0                        | 758                 | 0                                      | 103   | 0                      | 34                                     | 0                          | 726                                    | 0                        | 3                          |
| Nimba            | 0                        | 677                 | 0                                      | 141   | 0                      | 25                                     | 0                          | 641                                    | 0                        | 0                          |
| Bong             | 0                        | 476                 | 0                                      | 73  | 0                      | 28                                     | 0                          | 460                                    | 0                        | 2                          |
| Gbarpolu         | 0                        | 87                  | 0                                      | 13  | 0                      | 8                                      | 0                          | 87                                     | 0                        | 0                          |
| Grand Cape Mount | 0                        | 241                 | 0                                      | 0   | 0                      | 6                                      | 0                          | 241                                    | 0                        | 0                          |
| RiverGee         | 0                        | 133                 | 0                                      | 15  | 0                      | 31                                     | 0                          | 123                                    | 0                        | 0                          |
| Maryland         | 0                        | 436                 | 0                                      | 86  | 0                      | 24                                     | 0                          | 247                                    | 0                        | 0                          |
| Bomi             | 0                        | 289                 | 0                                      | 24  | 0                      | 52                                     | 0                          | 277                                    | 0                        | 0                          |
| Rivercess        | 0                        | 102                 | 0                                      | 62  | 0                      | 6                                      | 0                          | 102                                    | 0                        | 0                          |
| Grand Kru        | 0                        | 333                 | 0                                      | 131   | 0                      | 17                                     | 0                          | 353                                    | 0                        | 0                          |
| Grand Gedeh      | 0                        | 126                 | 0                                      | 2   | 0                      | 9                                      | 0                          | 118                                    | 0                        | 0                          |
| National         | 0                        | 15229               | 0                                      | 1681  | 0                      | 562                                    | 0                          | 14685                                  | 12                       | 14                         |

**Thank you for Listening**