



Liberia COVID-19 Daily Sitrep 600 (November 5, 2021)

Summary of COVID-19 Cases by Reporting County, Liberia, 16 March 2020 – 5 November 2021

County	Laboratory Confirmed Cases	Confirmed Cases on Contact List	Confirmed Cumulative Cases
Bomi	0	0	61
Bong	0	0	115
Gbarpolu	0	0	39
Grand Bassa	0	0	95
Grand Cape Mount	0	0	57
Grand Kru	0	0	26
Grand Gedeh	0	0	39
Lofa	0	0	164
Margibi	0	0	201
Maryland	0	0	175
Montserrado	0	0	4563
Nimba	0	0	183
Rivercess	0	0	16
River Gee	0	0	69
Sinoe	0	0	12
NATIONAL	0	0	5815

Summary of COVID-19 Deaths by Reporting County, Liberia, 16 March 2020 – 5 November 2021

County	ew Suspected Deaths	COVID-19 Treatment Unit	Total in COVID-19 Treatment Unit	Health Facility	Total in Health Facility	Community	Total in Community	Confirmed Deaths on Contact List	Cumulative Deaths
Bomi	0	0	0	0	2	0	0	0	2
Bong	0	0	4	0	9	0	3	0	16
Gbarpolu	0	0	0	0	2	0	0	0	2
Grand Bassa	0	0	0	0	6	0	0	0	6
Grand Cape Mount	0	0	0	0	0	0	0	0	0
Grand Gedeh	0	0	0	0	0	0	0	0	0
Grand Kru	0	0	0	0	0	0	0	0	0
Lofa	0	0	3	0	18	0	14	0	35
Maryland	0	0	4	0	7	0	2	0	13
Margibi	0	0	2	0	5	0	0	0	7
Montserrado	0	0	45	0	104	0	18	0	167
Nimba	0	0	8	0	21	0	4	0	33
Rivercess	0	0	0	0	2	0	1	0	3
River Gee	0	0	1	0	0	0	0	0	1
Sinoe	0	0	0	0	2	0	0	0	2
National	0	0	67	0	178	0	42	0	287

Daily and Cumulative Healthcare Worker (HCW) COVID-19 Cases and Deaths by County, Liberia, 16 March 2020 – 5 November 2021

County	New Suspected & High Risk Cases (Alive)			New Suspect Death	Laboratory Confirmed Cases	Confirmed Cases on Contact List	CUMULATIVE CASES (ALIVE & DEAD)	
	Suspect	High Risk	Total				Confirmed	Deaths
Bomi	0	0	0	0	0	0	19	0
Bong	0	0	0	0	0	0	29	4
Gbarpolu	0	0	0	0	0	0	1	1
Grand Bassa	0	0	0	0	0	0	26	0
Grand Gedeh	0	0	0	0	0	0	2	0
Grand Kru	0	0	0	0	0	0	14	0
Grand Cape Mount	0	0	0	0	0	0	0	0
Lofa	0	0	0	0	0	0	30	0
Margibi	0	0	0	0	0	0	13	1
Maryland	0	0	0	0	0	0	18	0
Montserrado	0	0	0	0	0	0	145	2
Nimba	0	0	0	0	0	0	30	0
Rivercess	0	0	0	0	0	0	6	0
River Gee	0	0	0	0	0	0	10	0
Sinoe	0	0	0	0	0	0	3	0
NATIONAL	0	0	0	0	0	0	346	8

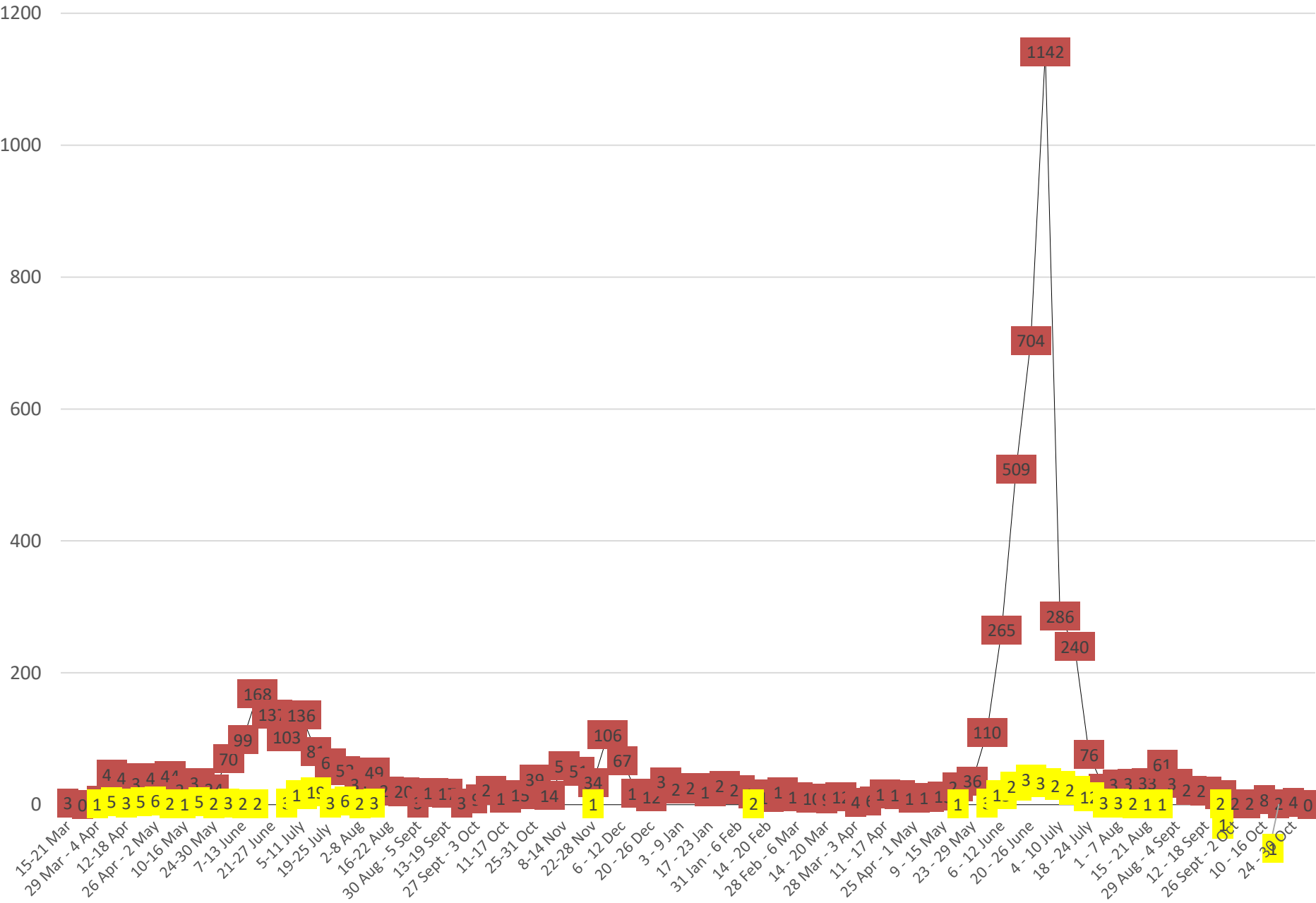
Cadre Cases and Deaths by Health Care Workers (16 March 2020 – 5 November 2021)

Health Care Worker Cadre	Montserratado		Margibi		Nimba		River Gee		Sinoe		Grand Kru		Gbarpolu		Bong		Lofa		Grand Bassa		Maryland		Bomi		Rivercess		Grand Cape Mount		Grand Gedeh		National (Total)	
	Cases	Deaths	Cases	Deaths	Cases	Deaths	Cases	Deaths	Cases	Deaths	Cases	Deaths	Cases	Deaths	Cases	Deaths	Cases	Deaths	Cases	Deaths	Cases	Deaths	Cases	Deaths	Cases	Deaths	Cases	Deaths	Cases	Deaths		
Doctors	24	0	1	0	5	0	1	0	0	0	0	0	0	0	2	0	0	0	2	0	1	0	0	0	0	0	0	0	0	36	0	
Pharmacists	7	0	0	0	0	0	0	0	0	0	0	0	0	0	0	0	0	0	0	0	0	0	0	0	0	0	0	0	7	0		
Nurses	49	1	2	0	4	0	7	0	0	0	2	0	1	1	15	4	10	0	16	0	7	0	5	0	0	0	1	0	119	6		
Nurse Aid	0	0	0	0	10	0	0	0	0	0	4	0	0	0	0	0	7	0	3	0	0	0	5	0	0	0	0	0	29	0		
Midwife	0	0	0	0	0	0	1	0	0	0	1	0	0	0	0	0	0	0	0	0	0	0	1	0	0	0	0	0	3	0		
Physician Assistants	10	1	1	0	0	0	1	0	0	0	1	0	0	0	0	0	0	0	0	0	0	0	0	0	0	0	0	13	1			
Lab Technician	11	0	1	0	2	0	0	0	1	0	1	0	0	0	4	0	2	0	0	0	9	0	1	0	3	0	0	0	35	0		
Environmental Health Technicians	5	0	0	0	0	0	0	0	0	0	0	0	0	0	0	0	0	0	0	0	0	0	0	0	0	0	0	5	0			
Dieticians	0	0	7	1	1	0	0	0	0	0	0	0	0	0	0	0	0	0	1	0	0	0	0	0	0	0	0	9	1			
Hospital Cleaner	1	0	0	0	0	0	0	0	0	0	1	0	0	0	0	0	6	0	1	0	0	0	1	0	2	0	0	12	0			
Others*	38	0	1	0	8	0	0	0	2	0	4	0	0	0	8	0	5	0	3	0	1	0	6	0	1	0	1	78	0			
Total:	145	2	13	1	30	0	10	0	3	0	14	0	1	1	29	4	30	0	26	0	18	0	19	0	6	0	0	0	2	0	346	8
	11	0	0	0	1	0	2	0	1	0	4	0	0	0	4	2	3	0	1	0	1	0	2	0	0	0		0	0	30	2	

***Others include the following:**

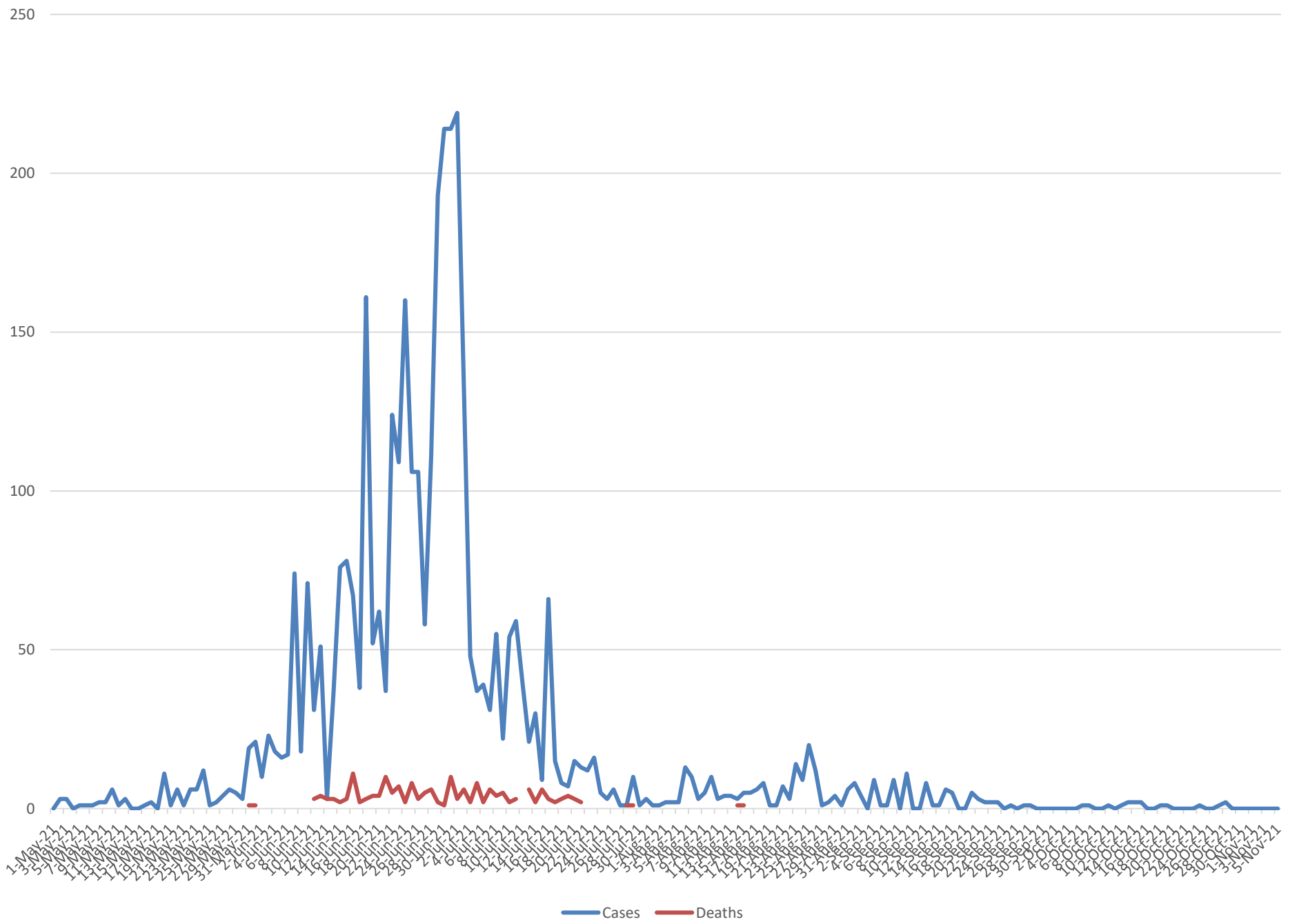
Radiologist, Microbiologist, Epidemiologist, Dispenser, Licensed Practical Nurse, Psychosocial worker, Hygienist, Logistician, Vaccinator, Ambulance Driver, Procurement Officer, Registrar, Accountant, Secretary, Hospital Administrator, Community Health Volunteer, GIS Specialist, EOC Coordinator, M&E Officer

Weekly Epi-Curve



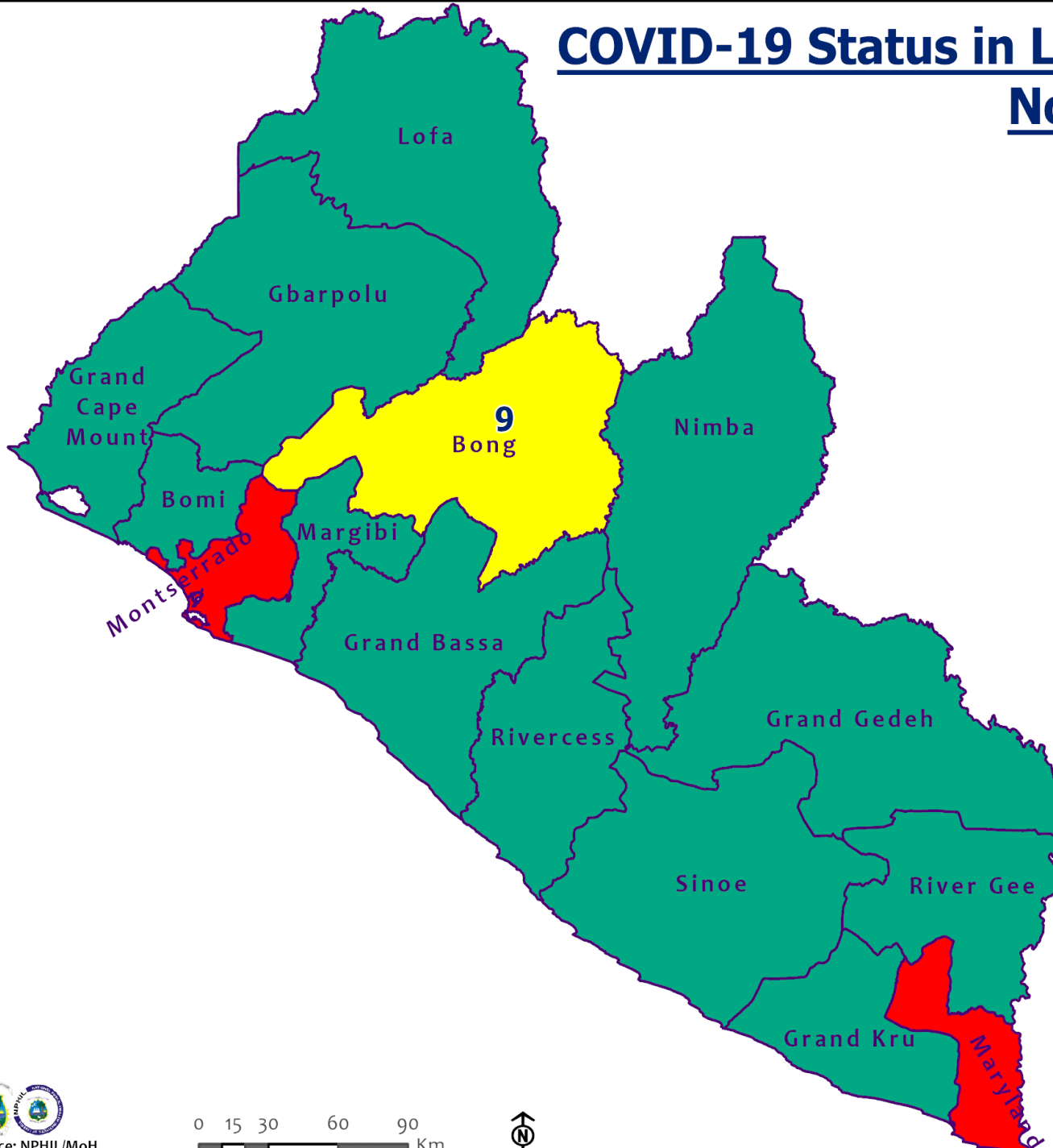
— Cases — Deaths

3rd Wave Daily Cases and Deaths



— Cases — Deaths

COVID-19 Status in Liberia by County November 5, 2021



Legend

County Status

- Preparedness
- 14-Day Countdown
- Response



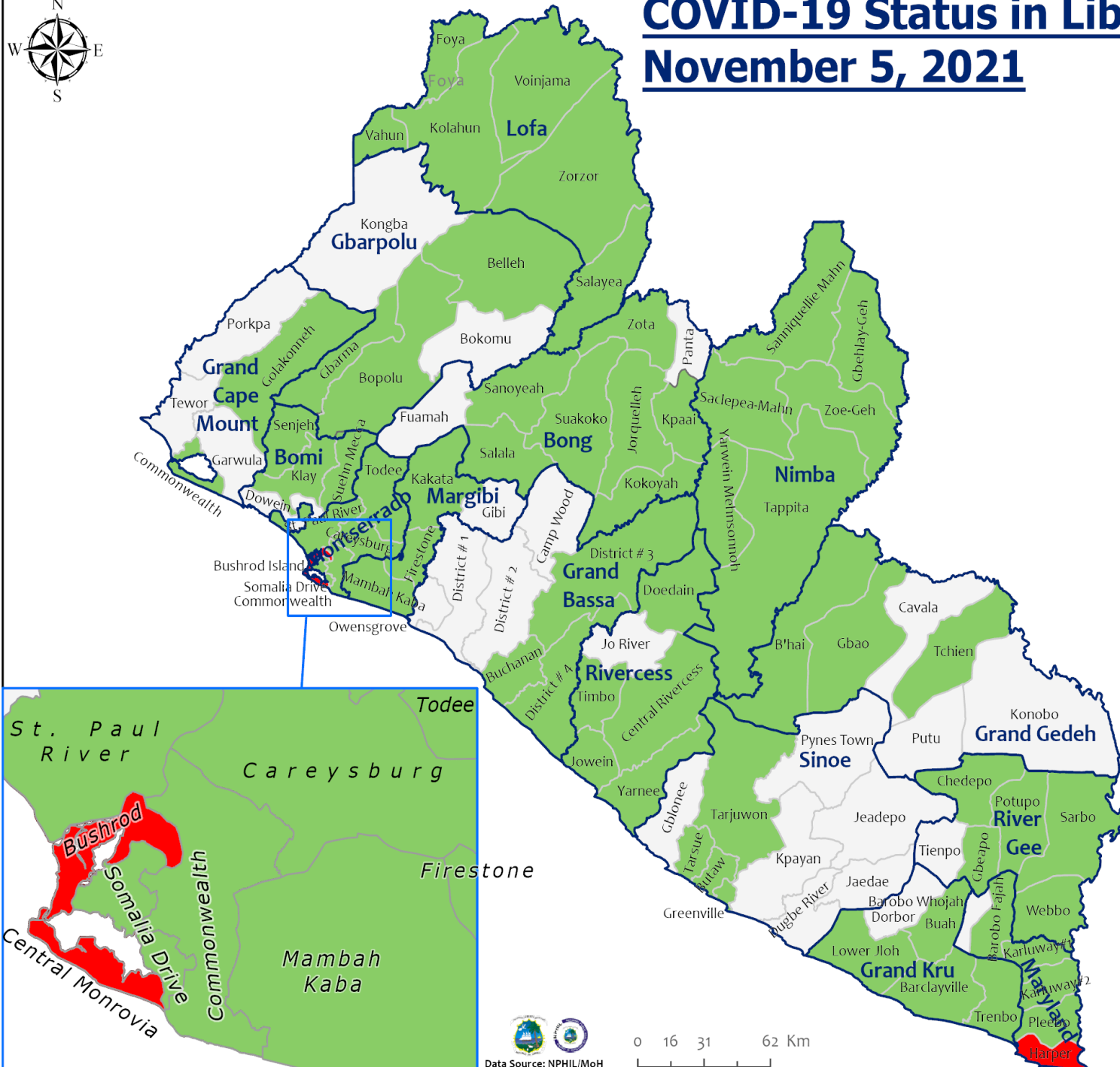
COVID-19 Status in Liberia by District

November 5, 2021



Total Cases: 5,815

Affected Counties	Cumulative Cases
Montserrado	4,563
Margibi	201
Nimba	183
Maryland	175
Lofa	164
Bong	115
Grand Bassa	95
River Gee	69
Bomi	61
Grand Cape	57
Mount	39
Gbarpolu	39
Grand Gedeh	39
Grand Kru	26
Rivercess	16
Sinoe	12

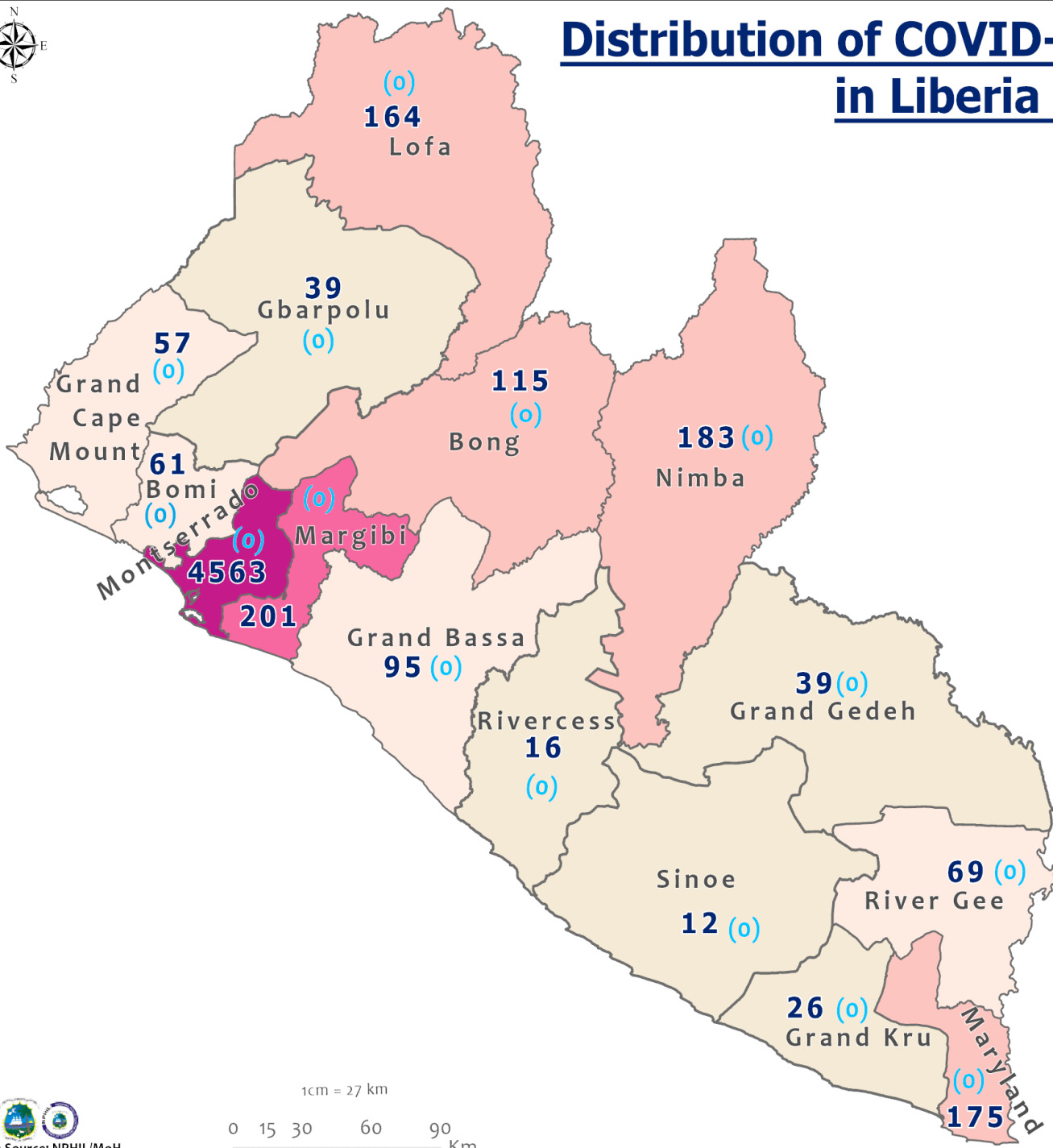


Legend

District Status

- Never had a case
- Back from recovery or first time with active case(s)
- With active cases(s)
- With recovered cases only

Distribution of COVID-19 Cases by County in Liberia - November 5, 2021



Total cumulative cases:

5,815

Total new cases:

0

Legend

Number of Cases

- 1 - 50
- 51 - 100
- 101 - 200
- 201 - 500
- 501 - 5000

Cumulative cases

New cases

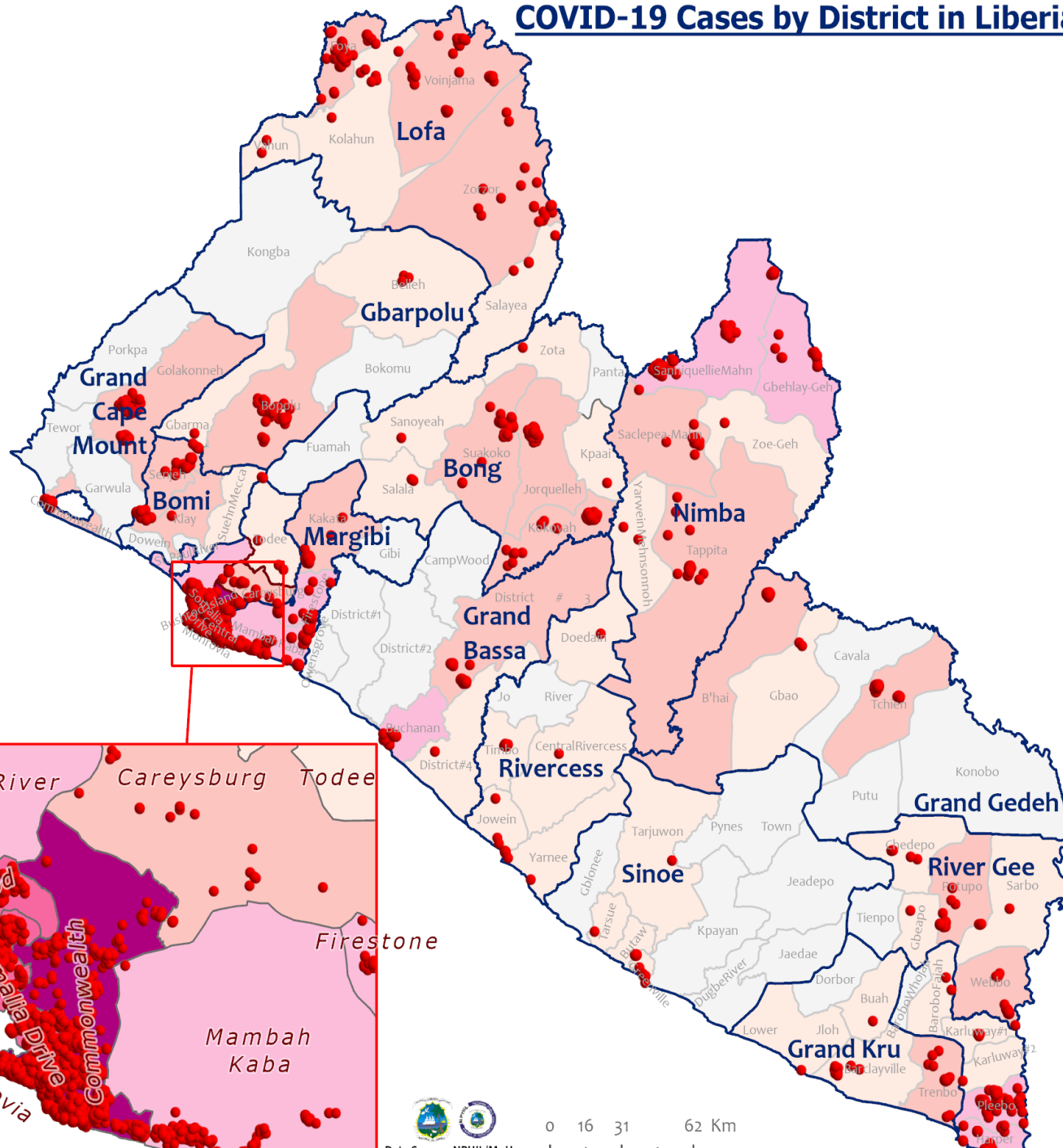
0 (0)

1cm = 27 km

0 15 30 60 90 Km



COVID-19 Cases by District in Liberia - November 5, 2021



Total Cases: 5,815

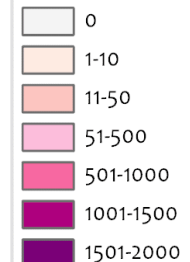
Affected Counties	Cumulative Cases
Montserrado	4,563
Margibi	201
Nimba	183
Maryland	175
Lofa	164
Bong	115
Grand Bassa	95
River Gee	69
Bomi	61
Grand Cape Mount	57
Gbarpolu	39
Grand Gedeh	39
Grand Kru	26
Rivercess	16
Sinoe	12

Legend

Case Status

- ★ New confirmed case
- Confirmed cases

Cases / District

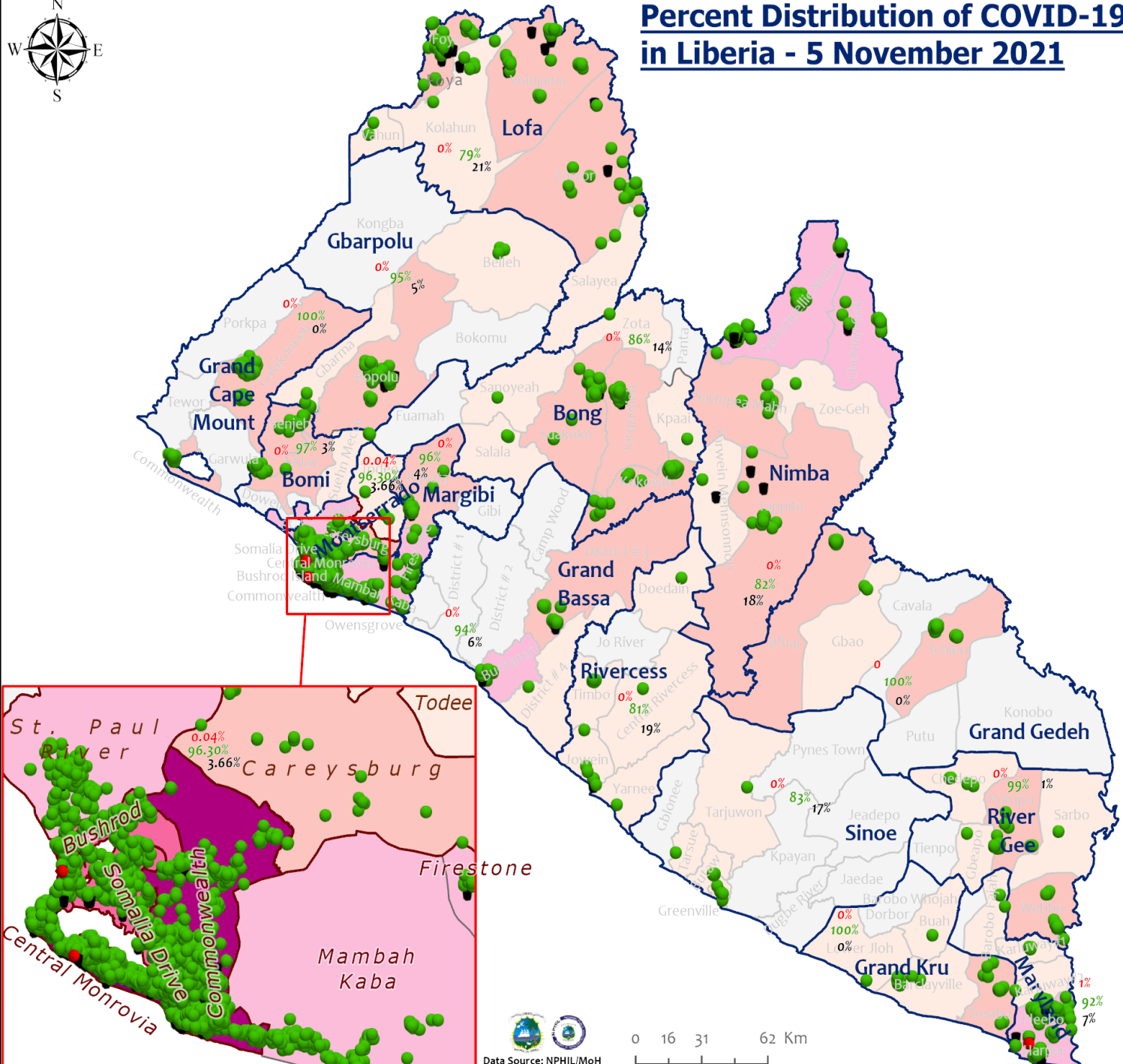


Percent Distribution of COVID-19 Cases by Status in Liberia - 5 November 2021



Total Cases: 5,815

Affected Counties	Cumulative Cases
Montserrado	4,563
Margibi	201
Nimba	183
Maryland	175
Lofa	164
Bong	115
Grand Bassa	95
River Gee	69
Bomi	61
Grand Cape	57
Mount	57
Gbarpolu	39
Grand Gedeh	39
Grand Kru	26
Rivercess	16
Sinoe	12



Legend

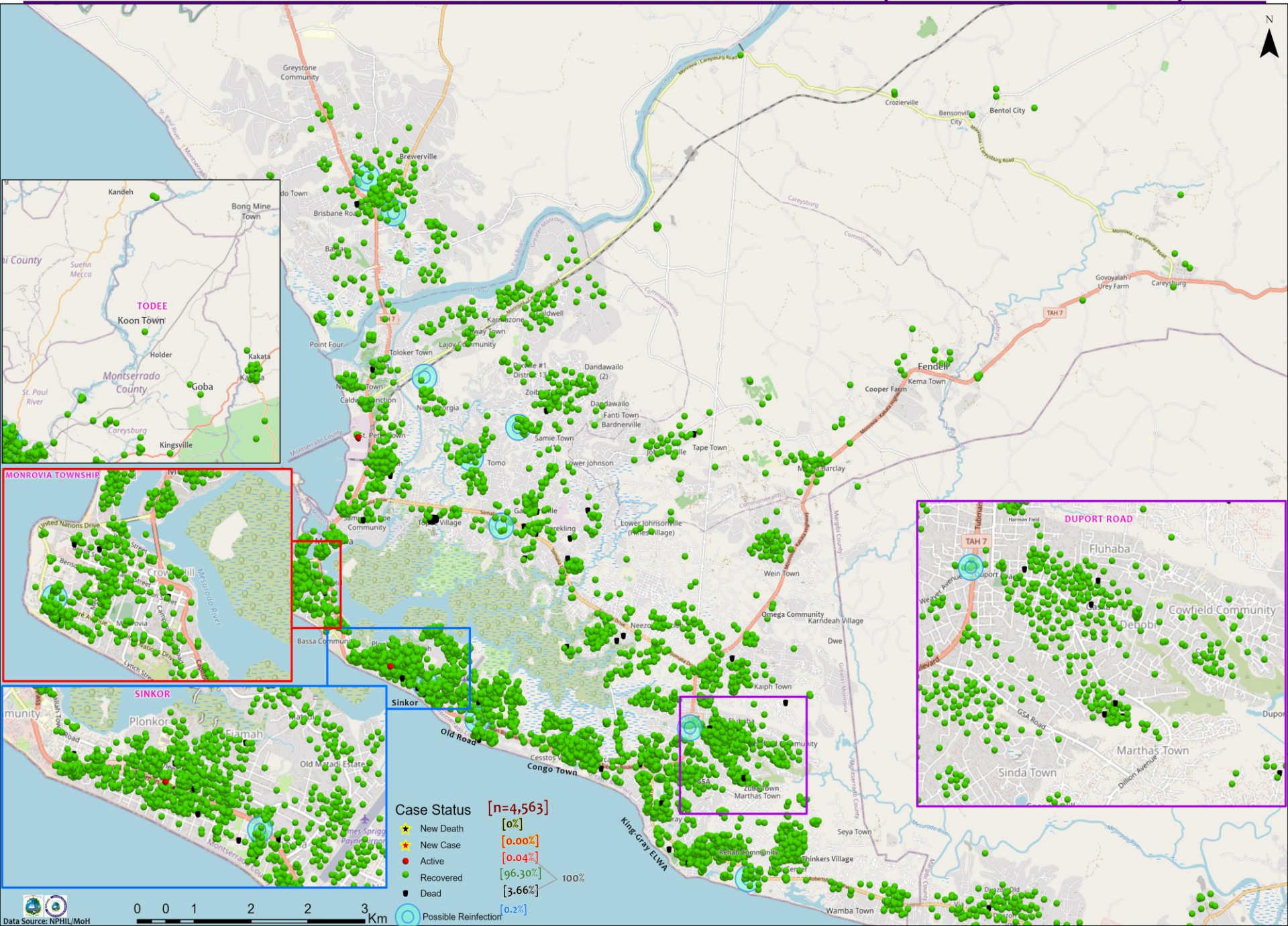
Case Status

- Active [0.1%]
- Recovered [94.9%]
- Dead [5.0%]

Cases / District

- 0
- 1-10
- 11-50
- 51-500
- 501-1000
- 1001-1500
- 1501-2000

Distribution of COVID-19 Cases in Montserrado Communities, Liberia November 5, 2021



Case Status [n=4,563]

★ New Death	[0%]
★ New Case	[0.00%]
● Active	[0.04%]
● Recovered	[96.30%]
■ Dead	[3.66%]
○ Possible Reinfection	[0.2%]

Summary of confirmed, recovered, active, and dead cases by reporting counties, Liberia, 16 March 2020 – 5 November 2021

County	Confirmed Cases		Recovered Cases		Active Cases	Dead Cases	
	New	Cum	New	Cum		New	Cum
Bomi	0	61	0	59	0	0	2
Bong	0	115	0	99	0	0	16
Gbarpolu	0	39	0	37	0	0	2
Grand Bassa	0	95	0	89	0	0	6
Grand Cape Mount	0	57	0	57	0	0	0
Grand Gedeh	0	39	0	39	0	0	0
Grand Kru	0	26	0	26	0	0	0
Lofa	0	164	0	129	0	0	35
Margibi	0	201	0	194	0	0	7
Maryland	0	175	0	161	1	0	13
Montserrado	0	4563	0	4395	1	0	167
Nimba	0	183	0	150	0	0	33
Rivercess	0	16	0	13	0	0	3
River Gee	0	69	0	68	0	0	1
Sinoe	0	12	0	10	0	0	2
National	0	5815	0	5526	2	0	287

Home-Base Care of COVID-19 – 5 November 2021

County	New Admissions	Currently in Admissions	No. Followed-up (In-person/Phone)	Cumulative Admissions	New Recoveries	Cumulative Recoveries	Referrals to TU	Cumulative Referrals to TU	New Death	Cumulative Deaths
Montserrat	0	0	0	2236	0	2207	0	29	0	0
Nimba				0						
Bong				0						
Maryland										
Cape Mount										
Lofa										
Margibi				0						
Total:	0	0	0	2236	0	2207	0	29	0	0

Laboratory Samples Evaluated – 5 November 2021

County	Sample Evaluated	New Positive	Repeat Positive	Initial Negative	Repeat Test Negative	Pending Lab Result
Margibi	5	0	0	5	0	0
Montserrado	146	0	0	146	0	0
Total	151	0	0	151	0	0
Outgoing Travelers	139	0	0	139	0	0
Volunteer	12	0	0	12	0	0
Incoming Traveler*	195	0	0	195	0	0
NRL	130	0	0	130	0	0
C. H. Rennie	2	0	0	2	0	0
PREVAIL-JFK	10	0	0	10	0	0
UN Clinic	9	0	0	9	0	0

Summary of COVID-19 Contact Tracing in Response Counties

County	New Contacts Line listed	Cumulative Contacts	No. of Health Care Workers as Contacts	Cumulative no. of Health Care Workers as contacts	Contacts became a case	Cumulative contacts that became a case	Contacts Completed 14 Days	Cumulative Contacts Completing 14 Days	Contacts Under Follow-up	Contacts lost to Follow-up
Montserratado	0	9286	0	711	0	211	0	9074	0	6
Margibi	0	1655	0	135	0	44	0	1641	0	3
Grand Bassa	0	416	0	150	0	63	0	398	0	0
Sinoe	0	229	0	35	0	4	0	229	0	0
Lofa	0	758	0	103	0	34	0	726	0	3
Nimba	0	677	0	141	0	25	0	641	0	0
Bong	0	476	0	73	0	28	0	460	0	2
Gbarpolu	0	87	0	13	0	8	0	87	0	0
Grand Cape Mount	0	241	0	0	0	6	0	241	0	0
RiverGee	0	133	0	15	0	31	0	123	0	0
Maryland	0	436	0	86	0	24	0	257	0	0
Bomi	0	289	0	24	0	52	0	277	0	0
Rivercess	0	102	0	62	0	6	0	102	0	0
Grand Kru	0	333	0	131	0	17	0	353	0	0
Grand Gedeh	0	126	0	2	0	9	0	118	0	0
National	0	15244	0	1681	0	562	0	14727	0	14

Thank you for Listening