



Liberia COVID-19 Daily Sitrep 687 (January 31, 2022)

Summary of COVID-19 Cases by Reporting County, Liberia, 16 March 2020 – 31 January 2022

County	Laboratory Confirmed Cases	Confirmed Cases on Contact List	Confirmed Cumulative Cases
Bomi	0	0	63
Bong	0	0	149
Gbarpolu	0	0	53
Grand Bassa	0	0	107
Grand Cape Mount	0	0	58
Grand Kru	0	0	26
Grand Gedeh	2	0	62
Lofa	0	0	165
Margibi	0	0	297
Maryland	0	0	355
Montserrado	0	0	5610
Nimba	0	0	233
Rivercess	0	0	16
River Gee	0	0	69
Sinoe	0	0	13
NATIONAL	2	0	7276

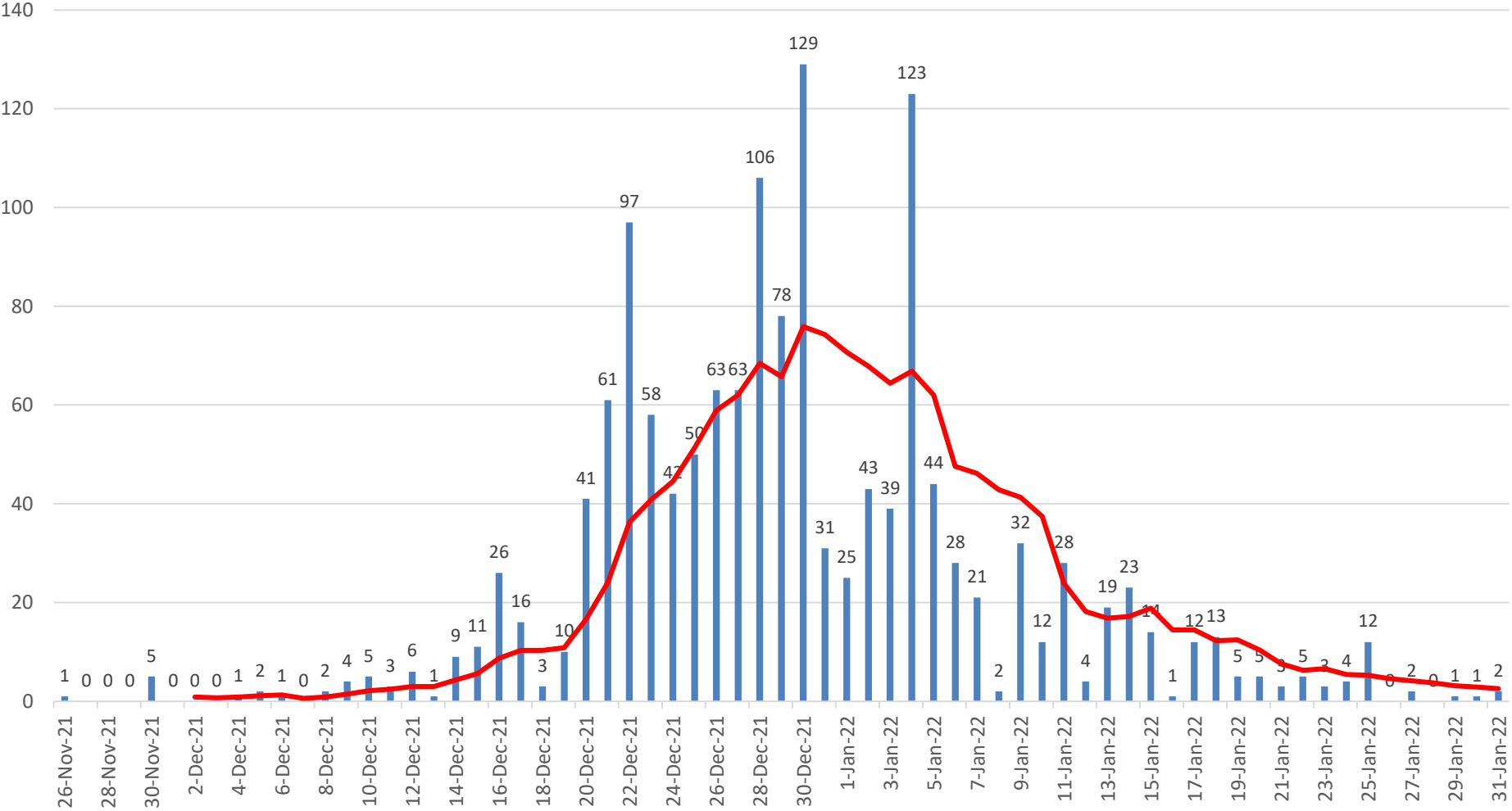
Summary of COVID-19 Deaths by Reporting County, Liberia, 16 March 2020 – 31 January 2022

County	ew Suspected Deaths	COVID-19 Treatment Unit	Total in COVID-19 Treatment Unit	Health Facility	Total in Health Facility	Community	Total in Community	Confirmed Deaths on Contact List	Cumulative Deaths
Bomi	0	0	0	0	2	0	0	0	2
Bong	0	0	4	0	9	0	3	0	16
Gbarpolu	0	0	0	0	2	0	0	0	2
Grand Bassa	0	0	0	0	6	0	0	0	6
Grand Cape Mount	0	0	0	0	0	0	0	0	0
Grand Gedeh	0	0	0	0	0	0	0	0	0
Grand Kru	0	0	0	0	0	0	0	0	0
Lofa	0	0	3	0	18	0	14	0	35
Maryland	0	0	4	0	8	0	2	0	14
Margibi	0	0	2	0	5	0	0	0	7
Montserrado	0	0	46	0	105	0	18	0	169
Nimba	0	0	8	0	21	0	4	0	33
Rivercess	0	0	0	0	2	0	1	0	3
River Gee	0	0	1	0	0	0	0	0	1
Sinoe	0	0	0	0	2	0	0	0	2
National	0	0	68	0	180	0	42	0	290

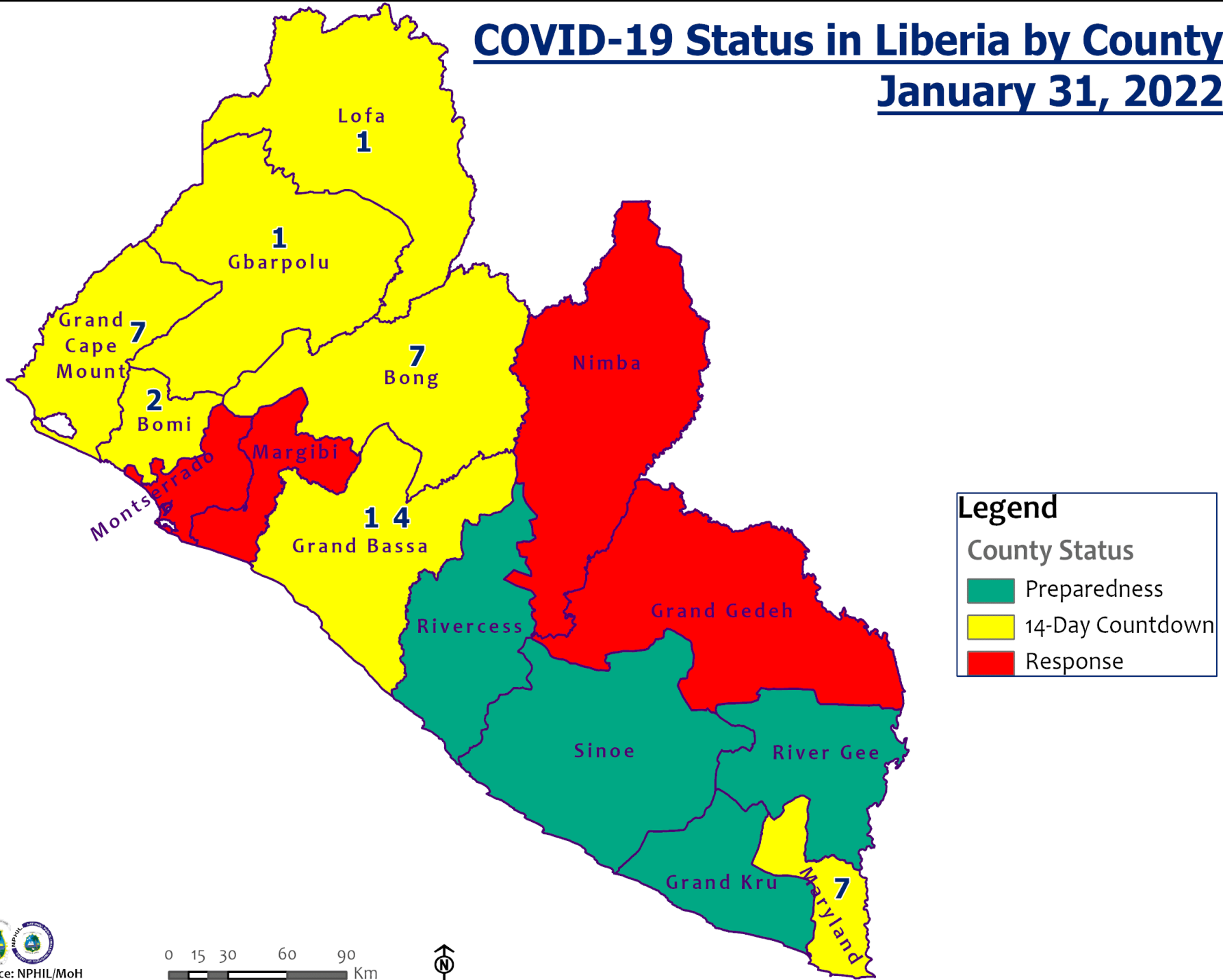
Daily and Cumulative Healthcare Worker (HCW) COVID-19 Cases and Deaths by County, Liberia, 16 March 2020 – 31 January 2022

County	New Suspected & High Risk Cases (Alive)			New Suspect Death	Laboratory Confirmed Cases	Confirmed Cases on Contact List	CUMULATIVE CASES (ALIVE & DEAD)	
	Suspect	High Risk	Total				Confirmed	Deaths
Bomi	0	0	0	0	0	0	19	0
Bong	0	0	0	0	0	0	30	4
Gbarpolu	0	0	0	0	0	0	1	1
Grand Bassa	0	0	0	0	0	0	26	0
Grand Gedeh	0	0	0	0	0	0	2	0
Grand Kru	0	0	0	0	0	0	14	0
Grand Cape Mount	0	0	0	0	0	0	0	0
Lofa	0	0	0	0	0	0	30	0
Margibi	0	0	0	0	0	0	22	1
Maryland	0	0	0	0	0	0	39	0
Montserrado	0	0	0	0	0	0	172	2
Nimba	0	0	0	0	0	0	30	0
Rivercess	0	0	0	0	0	0	6	0
River Gee	0	0	0	0	0	0	10	0
Sinoe	0	0	0	0	0	0	3	0
NATIONAL	0	0	0	0	0	0	404	8

Covid-19 Daily Cases & 7 Days Moving Average



COVID-19 Status in Liberia by County January 31, 2022



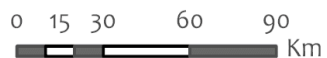
Legend

County Status

- Preparedness
- 14-Day Countdown
- Response



Data Source: NPHIL/MoH



COVID-19 Status in Liberia by District

January 31, 2022



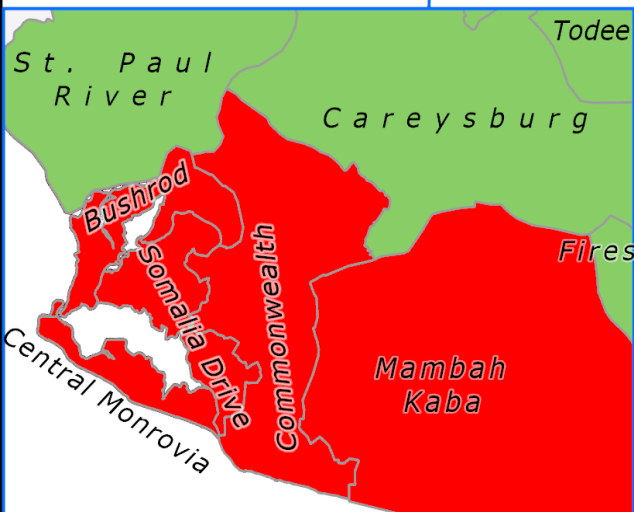
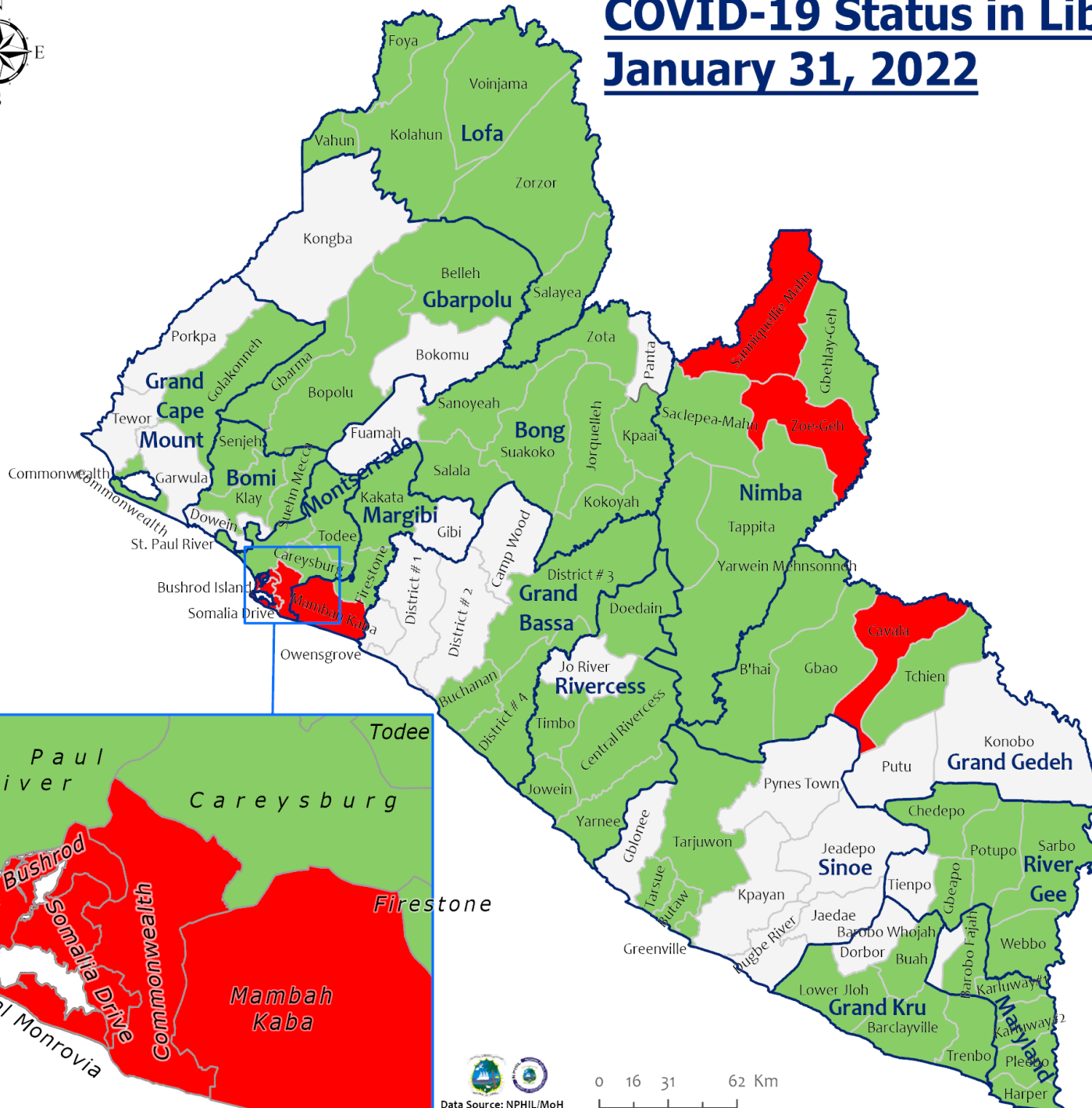
Total Cases: 7,276

Affected Counties	Cumulative Cases
Montserrado	5,610
Maryland	355
Margibi	297
Nimba	233
Lofa	165
Bong	149
Grand Bassa	107
River Gee	69
Bomi	63
Grand Gedeh	62
Grand Cape Mount	58
Mount	53
Grand Kru	26
Rivercess	16
Sinoe	13

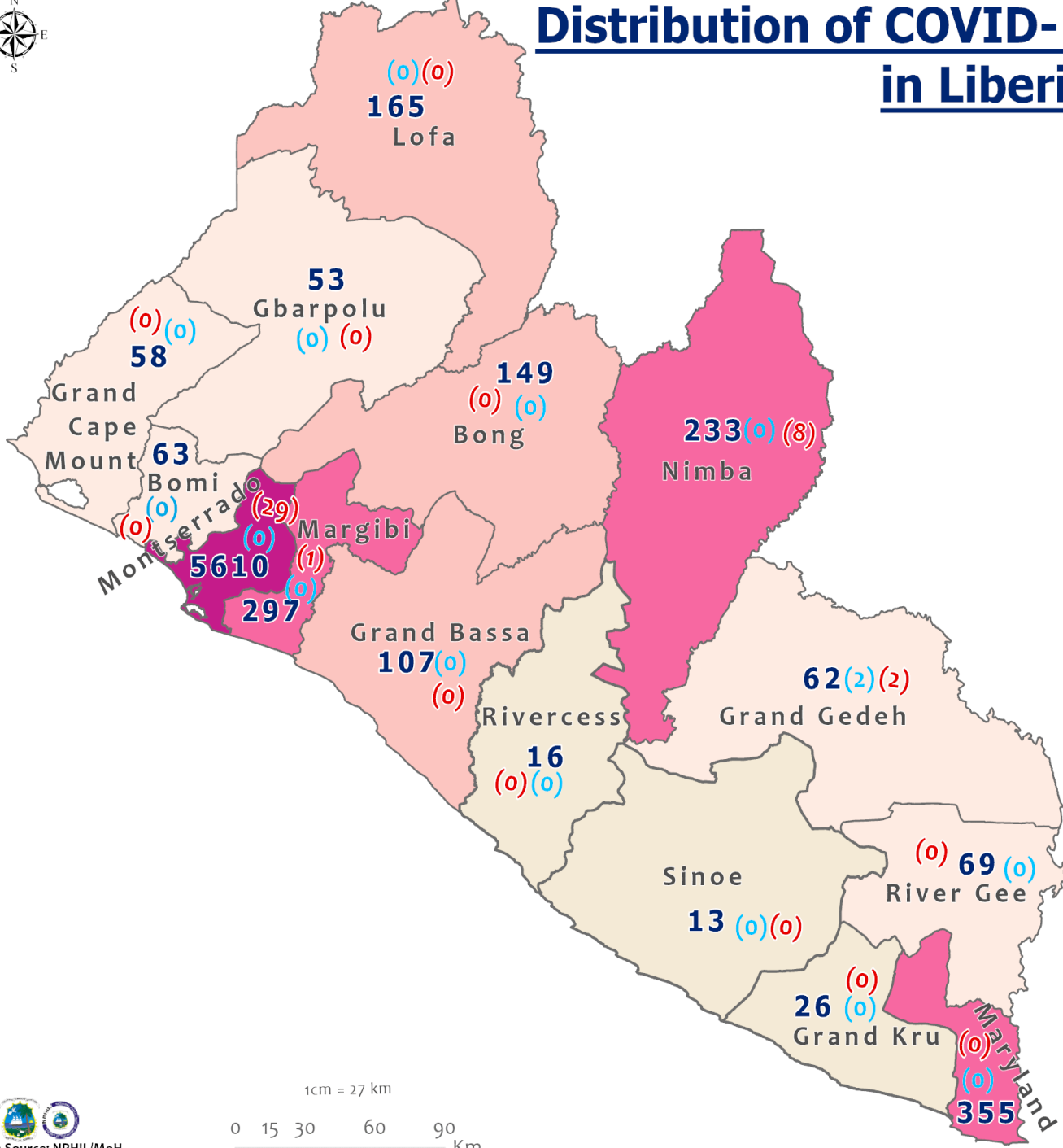
Legend

District Status

- Never had a case
- Back from recovery or first time with active case(s)
- With active cases(s)
- With recovered cases only



Distribution of COVID-19 Cases by County in Liberia January 31, 2022



Total cumulative cases:
7,276

Total active cases:
40

Total new cases:
2

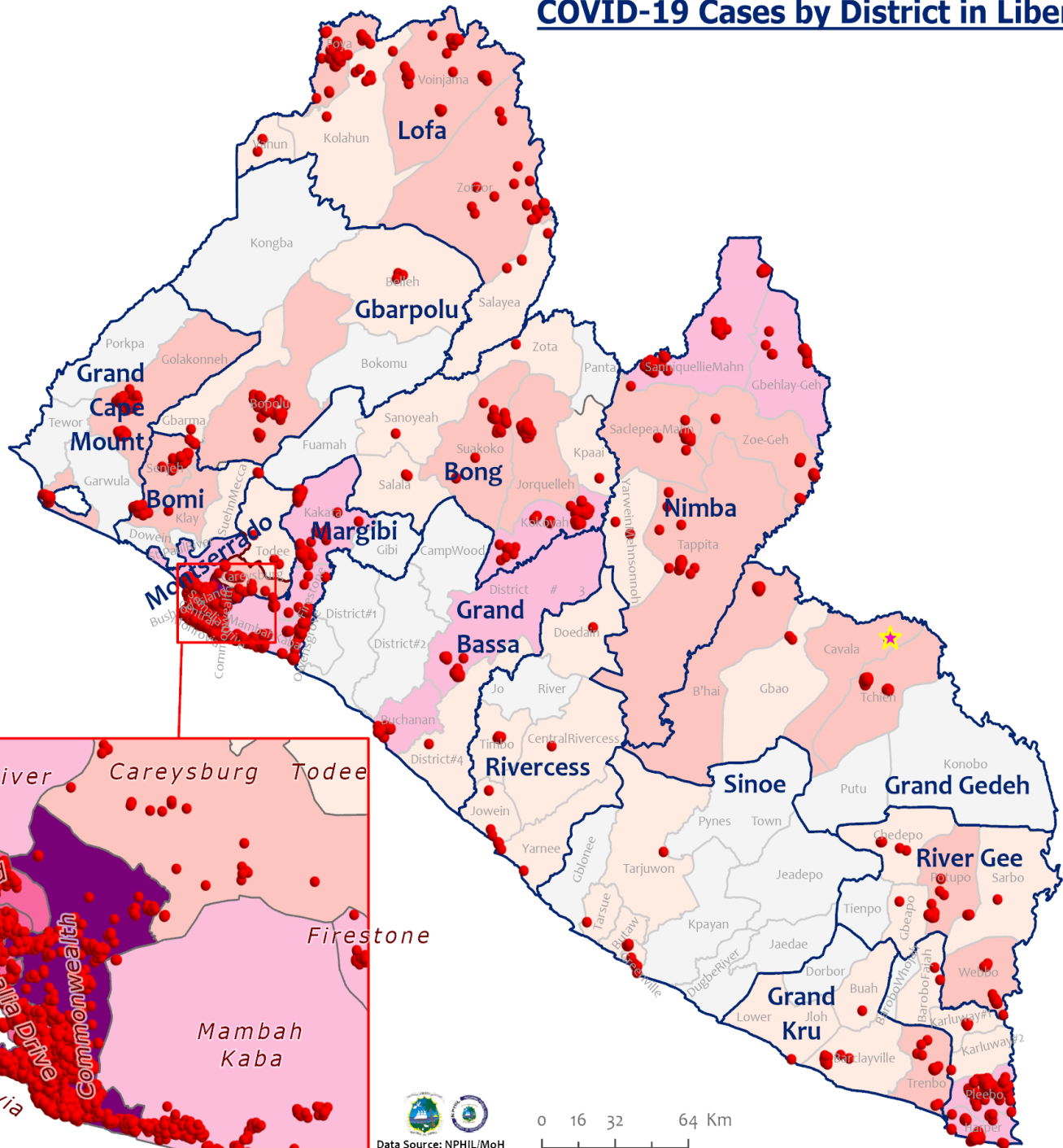
Legend
 Number of Cases

- 1 - 50
- 51 - 100
- 101 - 200
- 201 - 500
- 501 - 6000

Cumulative cases
 Active cases
 New cases

0 (0) (0)

COVID-19 Cases by District in Liberia - January 31, 2022



Total Cases: 7,276

Affected Counties	Cumulative Cases
Montserrado	5,610
Maryland	355
Margibi	297
Nimba	233
Lofa	165
Bong	149
Grand Bassa	107
River Gee	69
Bomi	63
Grand Gedeh	62
Grand Cape Mount	58
Gbarpolu	53
Grand Kru	26
Rivercess	16
Sinoe	13

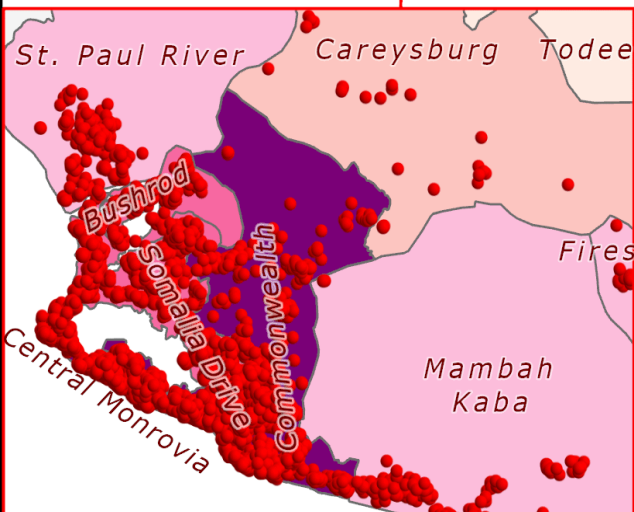
Legend

Case Status

- ★ New confirmed case
- Confirmed cases

Cases / District

- 0
- 1-10
- 11-50
- 51-500
- 501-1000
- 1001-1500
- 1501-2000

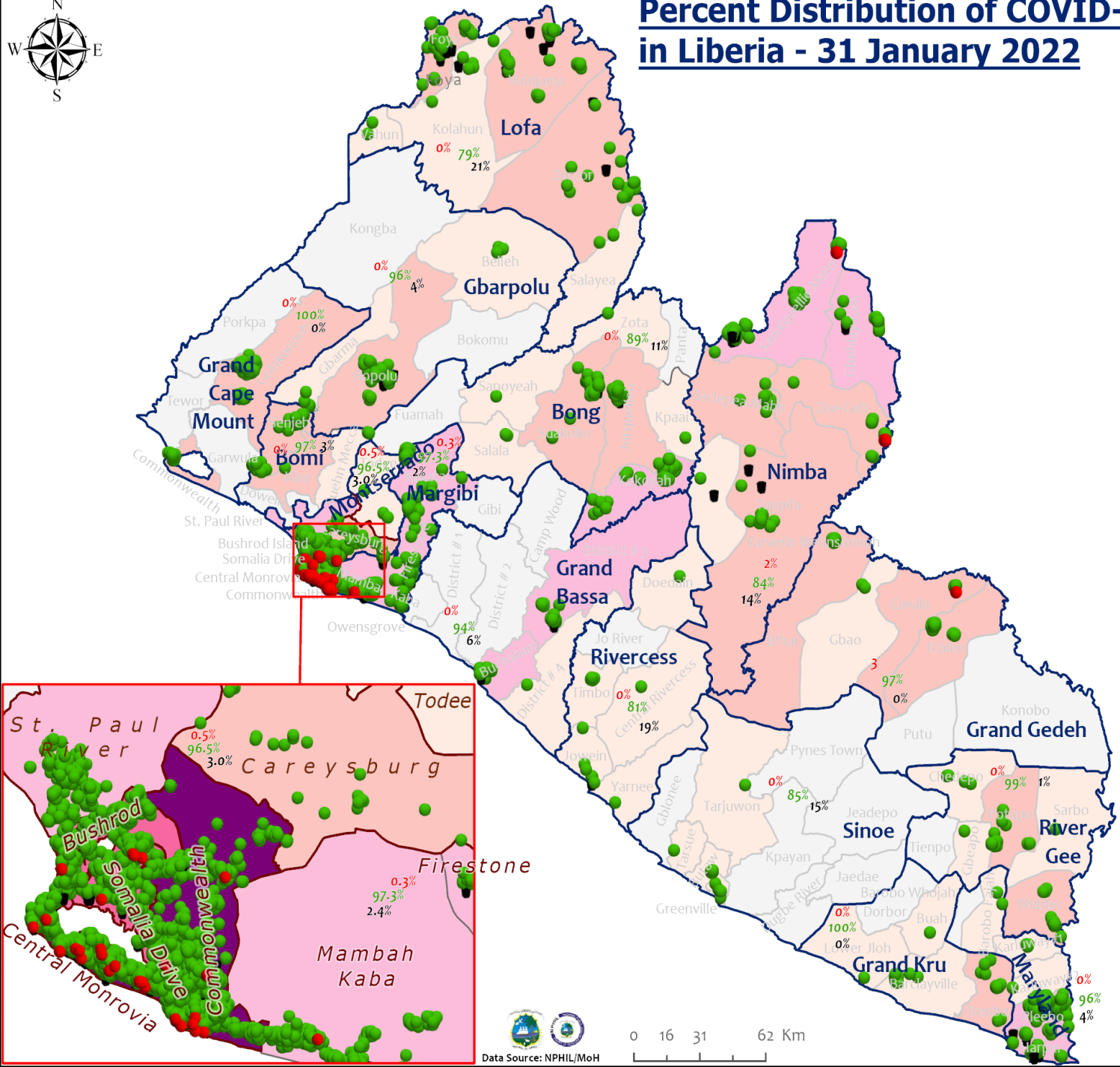


Percent Distribution of COVID-19 Cases by Status in Liberia - 31 January 2022



Total Cases: 7,276

Affected Counties	Cumulative Cases
Montserrado	5,610
Maryland	355
Margibi	297
Nimba	233
Lofa	165
Bong	149
Grand Bassa	107
River Gee	69
Bomi	63
Grand Gedeh	62
Grand Cape	58
Gbarpolu	53
Grand Kru	26
Rivercess	16
Sinoe	13



Legend

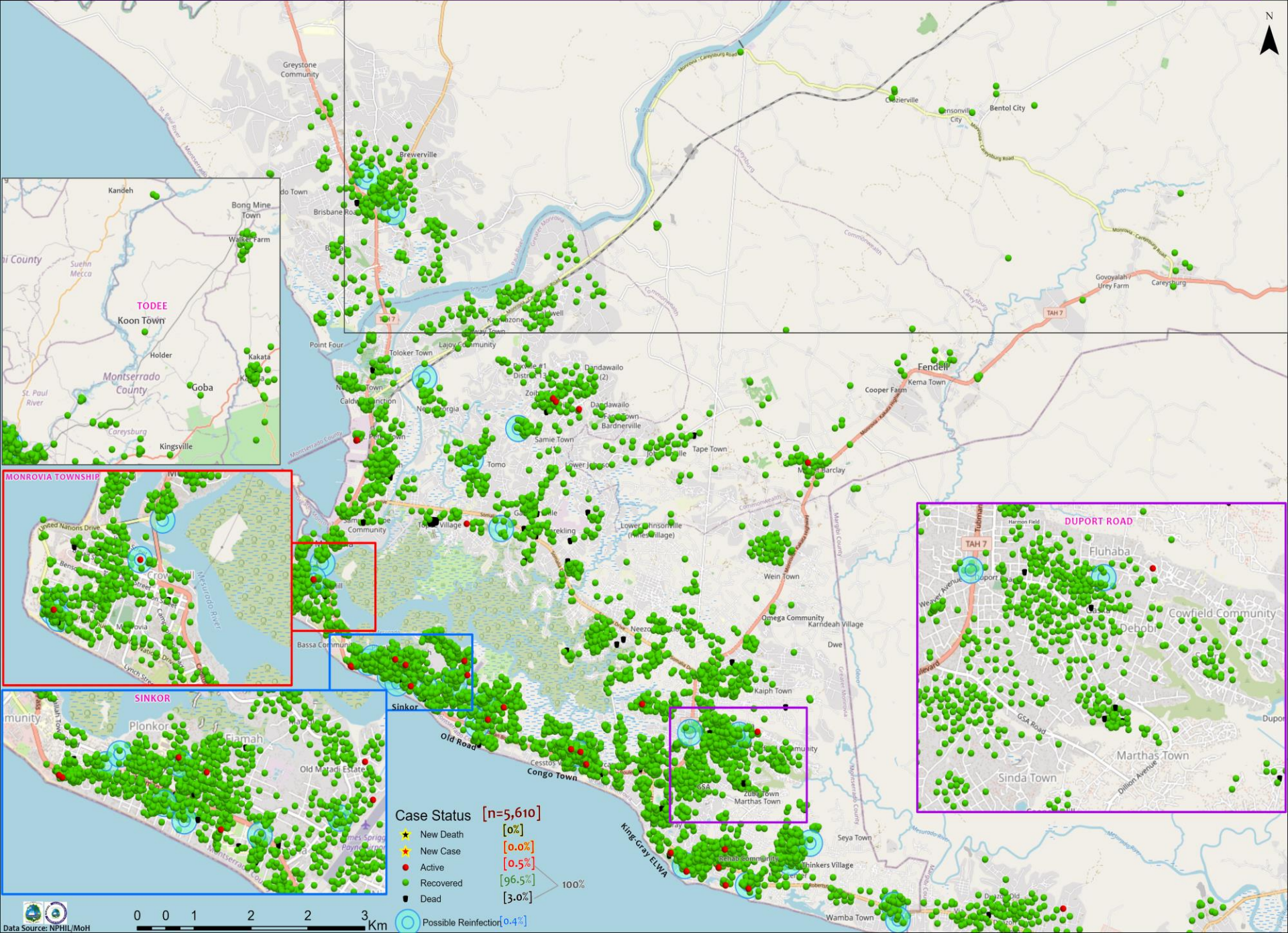
Case Status

- Active [0.5%]
- Recovered [95.5%]
- Dead [4.0%]

Cases / District

- 0
- 1-10
- 11-50
- 51-500
- 501-1000
- 1001-1500
- 1501-2000

Distribution of COVID-19 Cases in Montserrado Communities, Liberia January 31, 2022



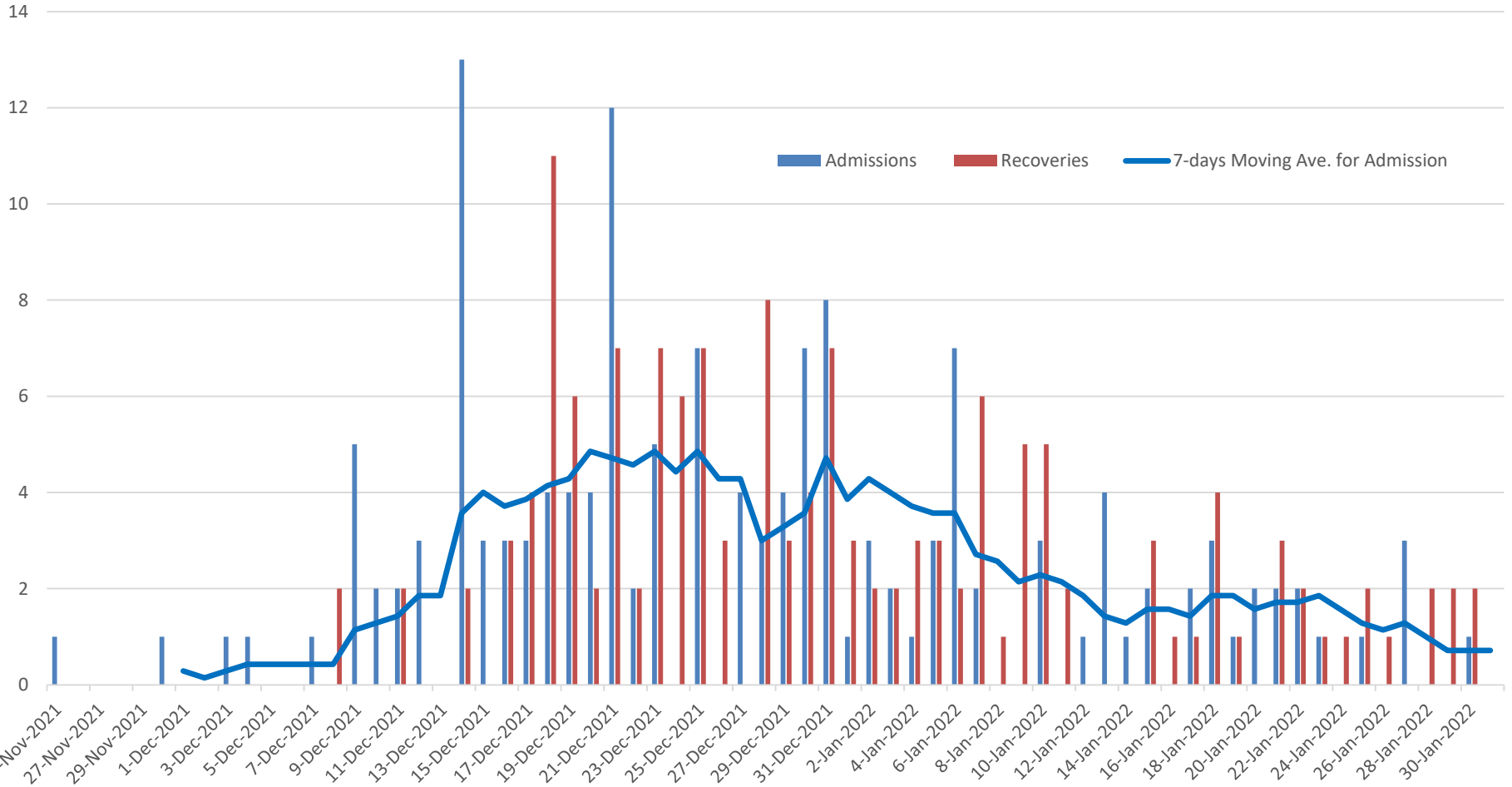
Case Status [n=5,610]

- ★ New Death [0%]
- ★ New Case [0.0%]
- Active [0.5%]
- Recovered [96.5%]
- Dead [3.0%]
- Possible Reinfectors [0.4%]

Summary of confirmed, recovered, active, and dead cases by reporting counties, Liberia, 16 March 2020 – 31 January 2022

County	Confirmed Cases		Recovered Cases		Active Cases	Dead Cases	
	New	Cum	New	Cum		New	Cum
Bomi	0	63	0	61	0	0	2
Bong	0	149	0	133	0	0	16
Gbarpolu	0	53	0	51	0	0	2
Grand Bassa	0	107	1	101	0	0	6
Grand Cape Mount	0	58	0	58	0	0	0
Grand Gedeh	2	62	3	60	2	0	0
Grand Kru	0	26	0	26	0	0	0
Lofa	0	165	0	130	0	0	35
Margibi	0	297	1	289	1	0	7
Maryland	0	355	0	341	0	0	14
Montserrado	0	5610	5	5412	29	0	169
Nimba	0	233	0	192	8	0	33
Rivercess	0	16	0	13	0	0	3
River Gee	0	69	0	68	0	0	1
Sinoe	0	13	0	11	0	0	2
National	2	7276	10	6946	40	0	290

4th Wave - Starbase Treatment Unit



Home-Base Care of COVID-19 – 31 January 2022

County	New Admissions	Currently in Admissions	No. Followed-up (In-person/Phone)	Cumulative Admissions	New Recoveries	Cumulative Recoveries	Referrals to TU	Cumulative Referrals to TU	New Death	Cumulative Deaths
Montserrat	0	56	0	2295	0	2210	0	29	0	0
Nimba	0	0	0	108	0	96				
Bong				0						
Maryland	0	1								
Cape Mount										
Lofa										
Margibi	0	6		7	0	1				
Total:	0	63	0	2410	0	2307	0	29	0	0

Laboratory Samples Evaluated – 31 January 2022

County	Sample Evaluated	New Positive	Repeat Positive	Initial Negative	Repeat Test Negative	Pending Lab Result
Bong	22	0	0	22	0	0
Grand Bassa	3	0	0	3	0	0
Grand Cape Mount	118	0	0	118	0	0
Grand Gedeh	1	0	0	1	0	0
Margibi	2	0	0	2	0	0
Montserrado	151	0	1	151	0	0
Total	297	0	1	296	0	0
Outgoing Travelers	285	0	0	285	0	0
Voluntary testing (PCR)	11	0	1	10	0	0
Suspected	1	0	0	1	0	0
Incoming Travelers (RDT)*	236	0	0	236	0	0
NRL	228	0	0	228	0	0
Union Testing Center (RDT)	55	0	0	55	0	0
UN Clinic	11	0	1	10	0	0
US Embassy Lab	1	0	0	1	0	0
PREVAIL-JFK	2	0	0	2	0	0

Summary of COVID-19 Contact Tracing in Response Counties

County	New Contacts Line listed	Cumulative Contacts	No. of Health Care Workers as Contacts	Cumulative no. of Health Care Workers as contacts	Contacts became a case	Cumulative contacts that became a case	Contacts Completed 14 Days	Cumulative Contacts Completing 14 Days	Contacts Under Follow-up	Contacts lost to Follow-up
Montserrado	0	10296	0	794	0	250	0	10276	20	0
Margibi	0	1895	0	135	0	44	0	1798	97	0
Grand Bassa	0	438	0	150	0	63	0	438	0	0
Sinoe	0	229	0	35	0	4	0	229	0	0
Lofa	0	758	0	103	0	34	0	758	0	0
Nimba	0	1141	0	149	0	25	0	1119	22	0
Bong	0	539	0	73	0	28	0	539	0	0
Gbarpolu	0	133	0	13	0	8	0	133	0	0
Grand Cape Mount	0	248	0	0	0	6	0	248	0	0
RiverGee	0	133	0	15	0	31	0	133	0	0
Maryland	0	793	0	86	0	24	0	793	0	0
Bomi	0	289	0	24	0	52	0	289	0	0
Rivercess	0	102	0	62	0	6	0	102	0	0
Grand Kru	0	333	0	131	0	17	0	333	0	0
Grand Gedeh	0	282	0	2	0	9	0	273	9	0
National	0	17609	0	1772	0	601	0	17461	148	0

Thank you for Listening