



Liberia COVID-19 Daily Sitrep 707 (February 20, 2022)

Summary of COVID-19 Cases by Reporting County, Liberia, 16 March 2020 – 20 February 2022

County	Laboratory Confirmed Cases	Confirmed Cases on Contact List	Confirmed Cumulative Cases
Bomi	0	0	64
Bong	0	0	149
Gbarpolu	0	0	62
Grand Bassa	0	0	108
Grand Cape Mount	0	0	58
Grand Kru	0	0	26
Grand Gedeh	0	0	63
Lofa	0	0	165
Margibi	0	0	297
Maryland	0	0	359
Montserrado	1	0	5700
Nimba	0	0	233
Rivercess	0	0	16
River Gee	0	0	69
Sinoe	0	0	13
NATIONAL	1	0	7382

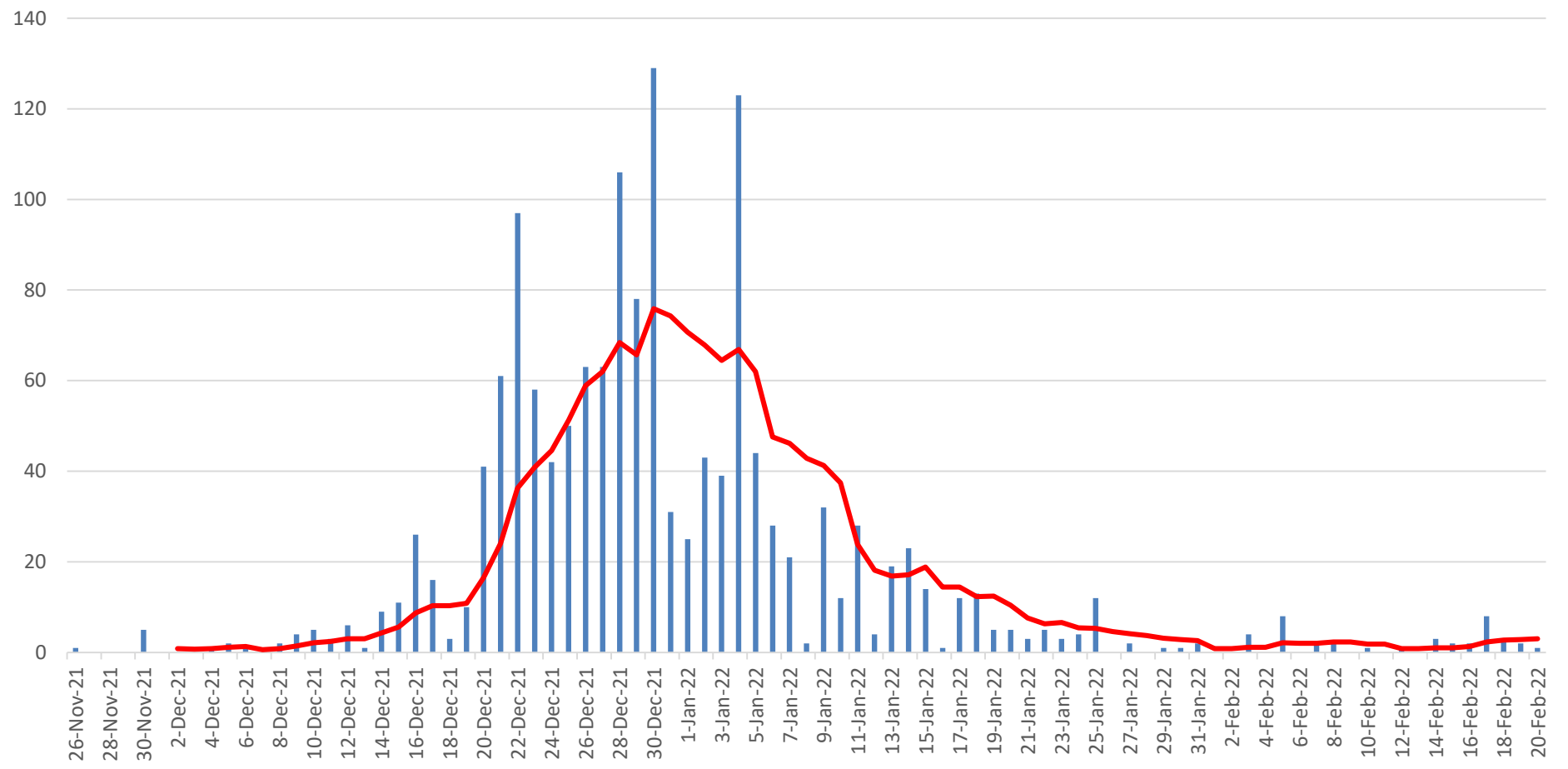
Summary of COVID-19 Deaths by Reporting County, Liberia, 16 March 2020 – 20 February 2022

County	ew Suspected Deaths	COVID-19 Treatment Unit	Total in COVID-19 Treatment Unit	Health Facility	Total in Health Facility	Community	Total in Community	Confirmed Deaths on Contact List	Cumulative Deaths
Bomi	0	0	0	0	2	0	0	0	2
Bong	0	0	4	0	13	0	3	0	20
Gbarpolu	0	0	0	0	2	0	0	0	2
Grand Bassa	0	0	0	0	6	0	0	0	6
Grand Cape Mount	0	0	0	0	0	0	0	0	0
Grand Gedeh	0	0	0	0	0	0	0	0	0
Grand Kru	0	0	0	0	0	0	0	0	0
Lofa	0	0	3	0	18	0	14	0	35
Maryland	0	0	4	0	8	0	2	0	14
Margibi	0	0	2	0	5	0	0	0	7
Montserrado	0	0	46	0	105	0	18	0	169
Nimba	0	0	8	0	21	0	4	0	33
Rivercess	0	0	0	0	2	0	1	0	3
River Gee	0	0	1	0	0	0	0	0	1
Sinoe	0	0	0	0	2	0	0	0	2
National	0	0	68	0	184	0	42	0	294

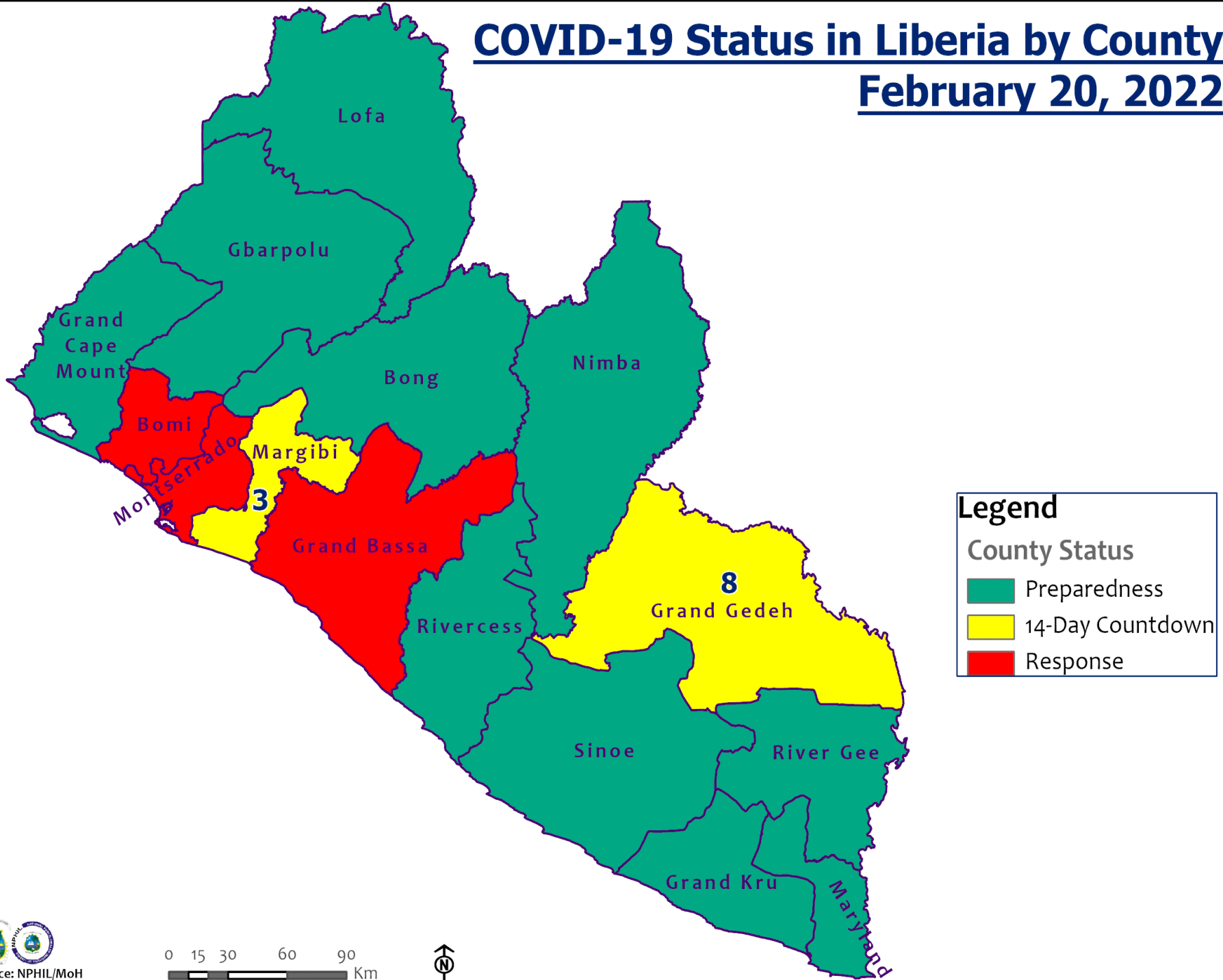
Daily and Cumulative Healthcare Worker (HCW) COVID-19 Cases and Deaths by County, Liberia, 16 March 2020 – 20 February 2022

County	New Suspected & High Risk Cases (Alive)			New Suspect Death	Laboratory Confirmed Cases	Confirmed Cases on Contact List	CUMULATIVE CASES (ALIVE & DEAD)	
	Suspect	High Risk	Total				Confirmed	Deaths
Bomi	0	0	0	0	0	0	19	0
Bong	0	0	0	0	0	0	30	4
Gbarpolu	0	0	0	0	0	0	1	1
Grand Bassa	0	0	0	0	0	0	26	0
Grand Gedeh	0	0	0	0	0	0	2	0
Grand Kru	0	0	0	0	0	0	14	0
Grand Cape Mount	0	0	0	0	0	0	0	0
Lofa	0	0	0	0	0	0	30	0
Margibi	0	0	0	0	0	0	22	1
Maryland	0	0	0	0	0	0	39	0
Montserrado	0	0	0	0	0	0	172	2
Nimba	0	0	0	0	0	0	30	0
Rivercess	0	0	0	0	0	0	6	0
River Gee	0	0	0	0	0	0	10	0
Sinoe	0	0	0	0	0	0	3	0
NATIONAL	0	0	0	0	0	0	404	8

Covid-19 Daily Cases & 7 Days Moving Average



COVID-19 Status in Liberia by County February 20, 2022



Legend

County Status

- Preparedness
- 14-Day Countdown
- Response

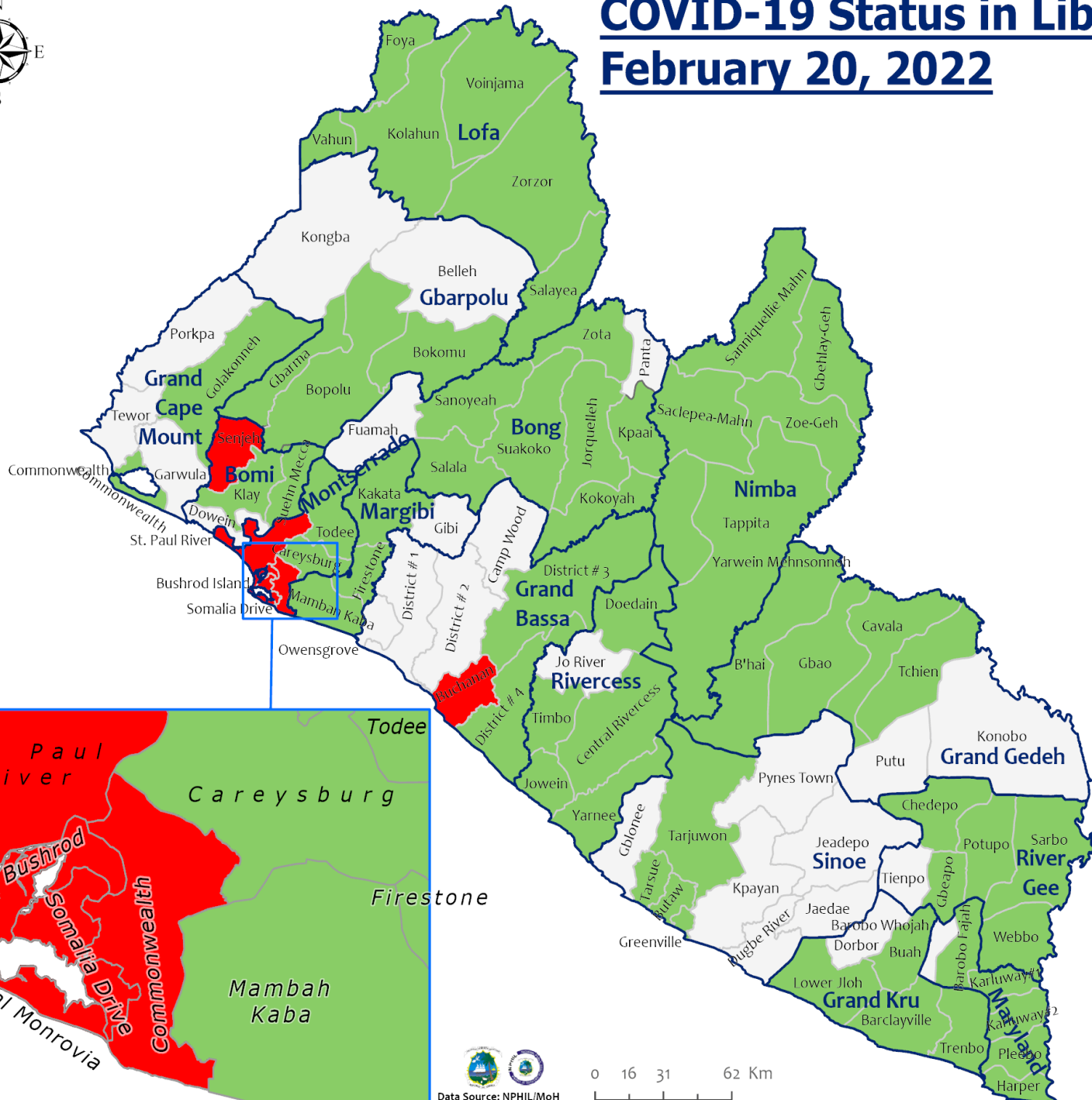


0 15 30 60 90 Km



COVID-19 Status in Liberia by District

February 20, 2022



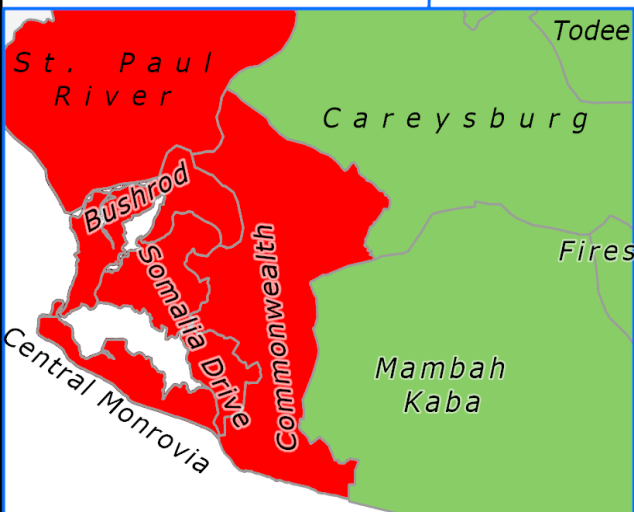
Total Cases: 7,382

Affected Counties	Cumulative Cases
Montserrado	5,700
Maryland	359
Margibi	297
Nimba	233
Lofa	165
Bong	149
Grand Bassa	108
River Gee	69
Bomi	64
Grand Gedeh	63
Gbarpolu	62
Grand Cape	58
Mount	26
Grand Kru	16
Rivercess	16
Sinoe	13

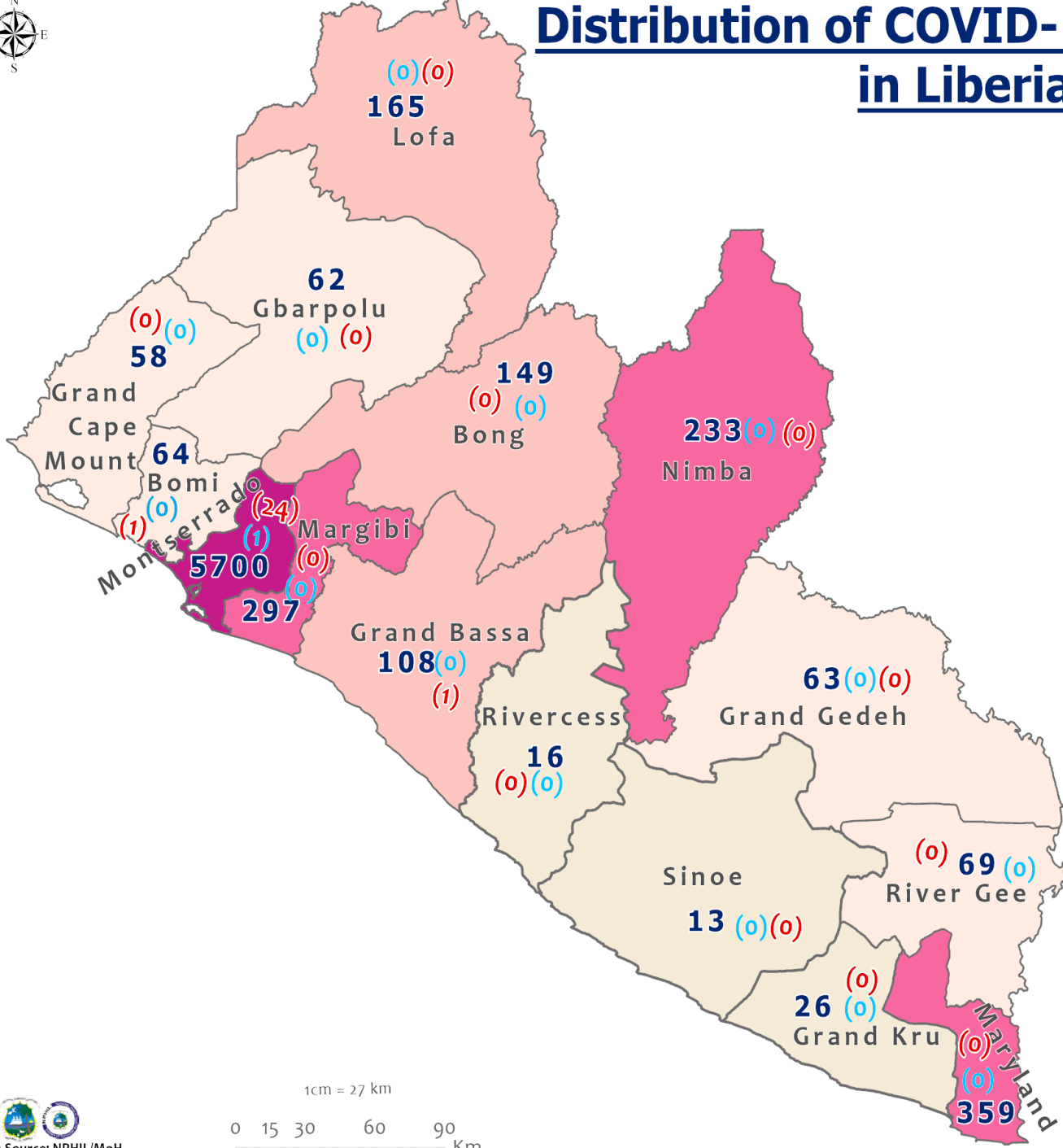
Legend

District Status

- Never had a case
- Back from recovery or first time with active case(s)
- With active case(s)
- With recovered cases only



Distribution of COVID-19 Cases by County in Liberia February 20, 2022



Total cumulative cases:
7,382

Total active cases:
26

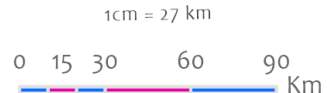
Total new cases:
1

Legend
Number of Cases

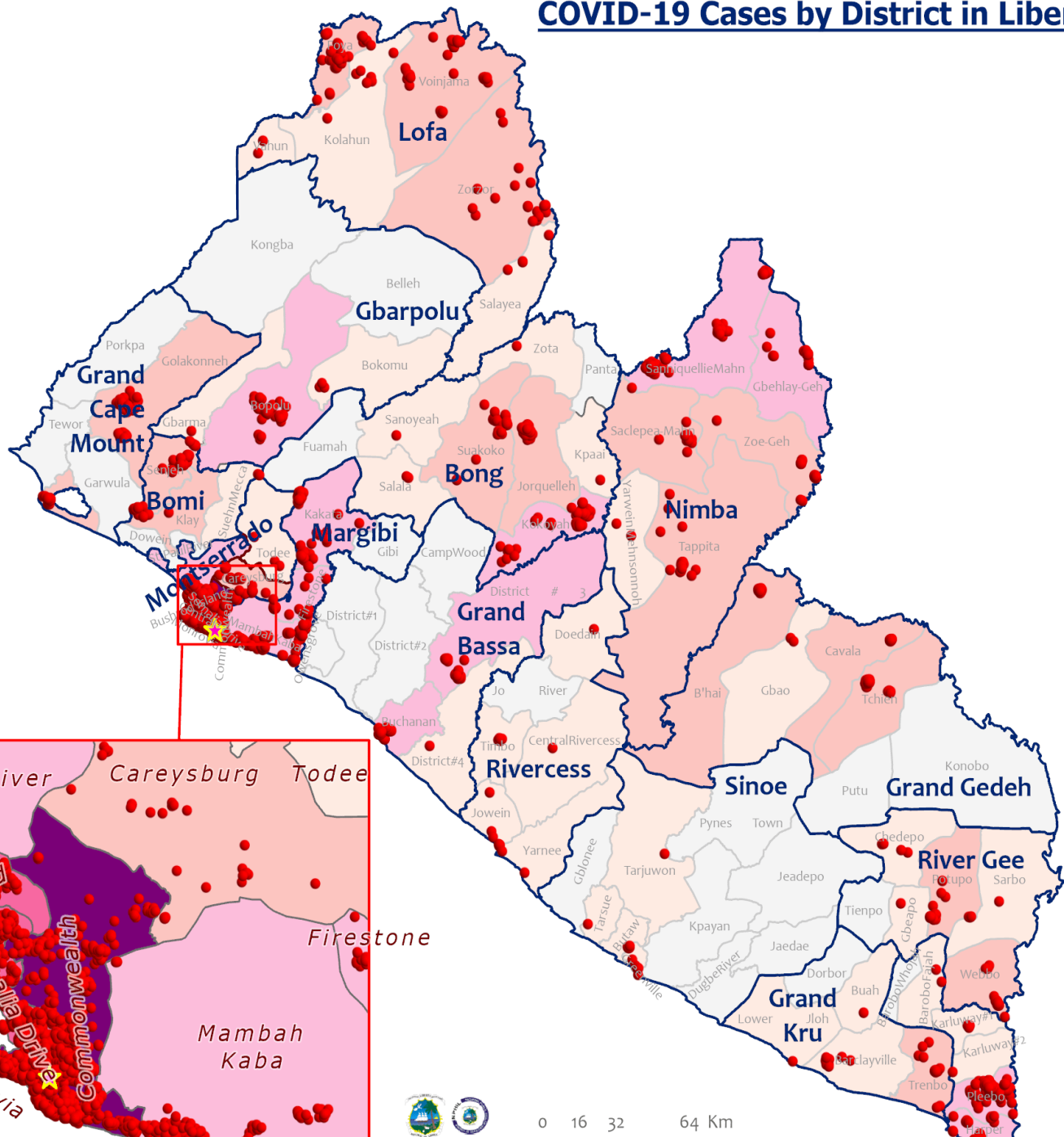
- 1 - 50
- 51 - 100
- 101 - 200
- 201 - 500
- 501 - 6000

Cumulative cases
Active cases
New cases

0 (0) (0)



COVID-19 Cases by District in Liberia - February 20, 2022



Total Cases: 7,382

Affected Counties	Cumulative Cases
Montserrado	5,700
Maryland	359
Margibi	297
Nimba	233
Lofa	165
Bong	149
Grand Bassa	108
River Gee	69
Bomi	64
Grand Gedeh	63
Gbarpolu	62
Grand Cape Mount	58
Grand Kru	26
Rivercess	16
Sinoe	13

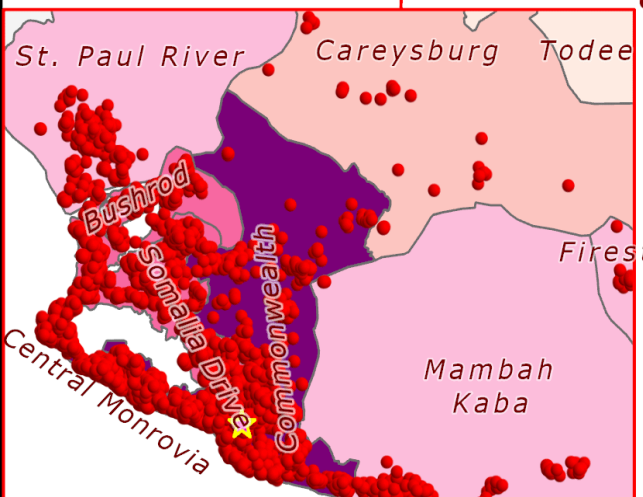
Legend

Case Status

- ★ New confirmed case
- Confirmed cases

Cases / District

- 0
- 1-10
- 11-50
- 51-500
- 501-1000
- 1001-1500
- 1501-2000



Percent Distribution of COVID-19 Cases by Status in Liberia - 20 February 2022



Total Cases: 7,382

Affected Counties	Cumulative Cases
Montserrado	5,700
Maryland	359
Margibi	297
Nimba	233
Lofa	165
Bong	149
Grand Bassa	108
River Gee	69
Bomi	64
Grand Gedeh	63
Gbarpolu	62
Grand Cape	58
Mount	26
Grand Kru	16
Rivercess	16
Sinoe	13

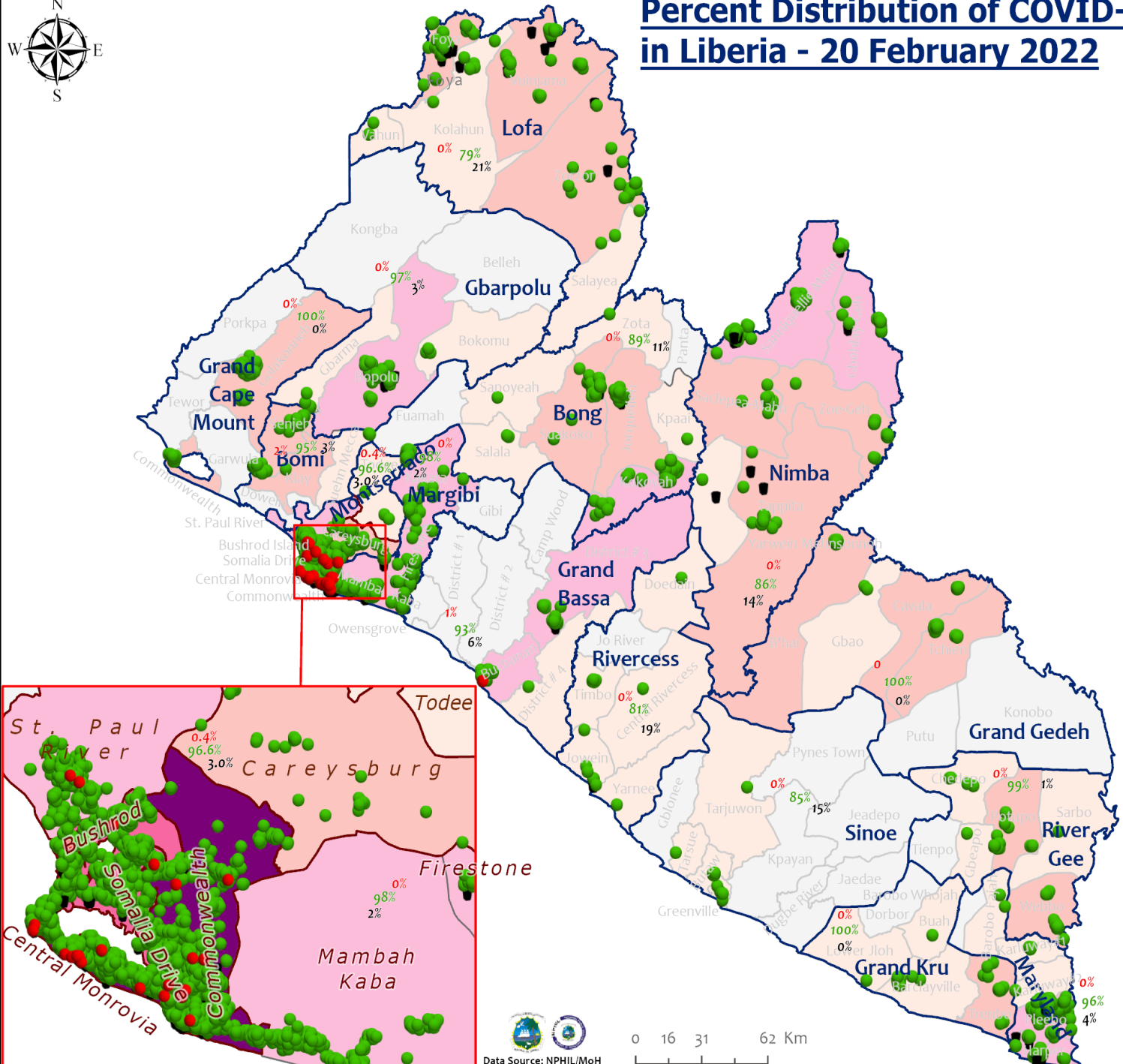
Legend

Case Status

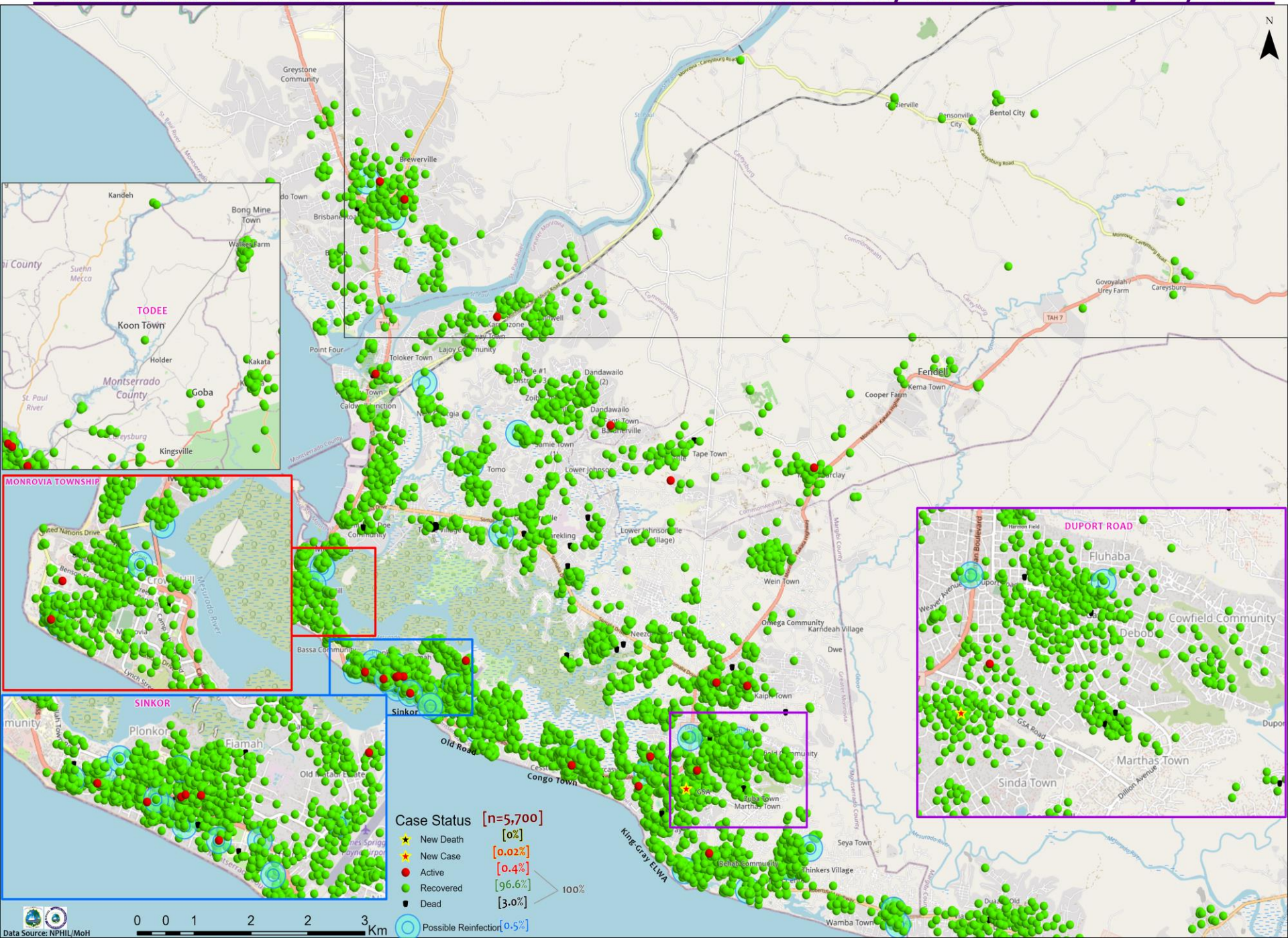
- Active [0.3%]
- Recovered [95.7%]
- Dead [4.0%]

Cases / District

- 0
- 1-10
- 11-50
- 51-500
- 501-1000
- 1001-1500
- 1501-2000



Distribution of COVID-19 Cases in Montserrado Communities, Liberia February 20, 2022



Case Status [n=5,700]

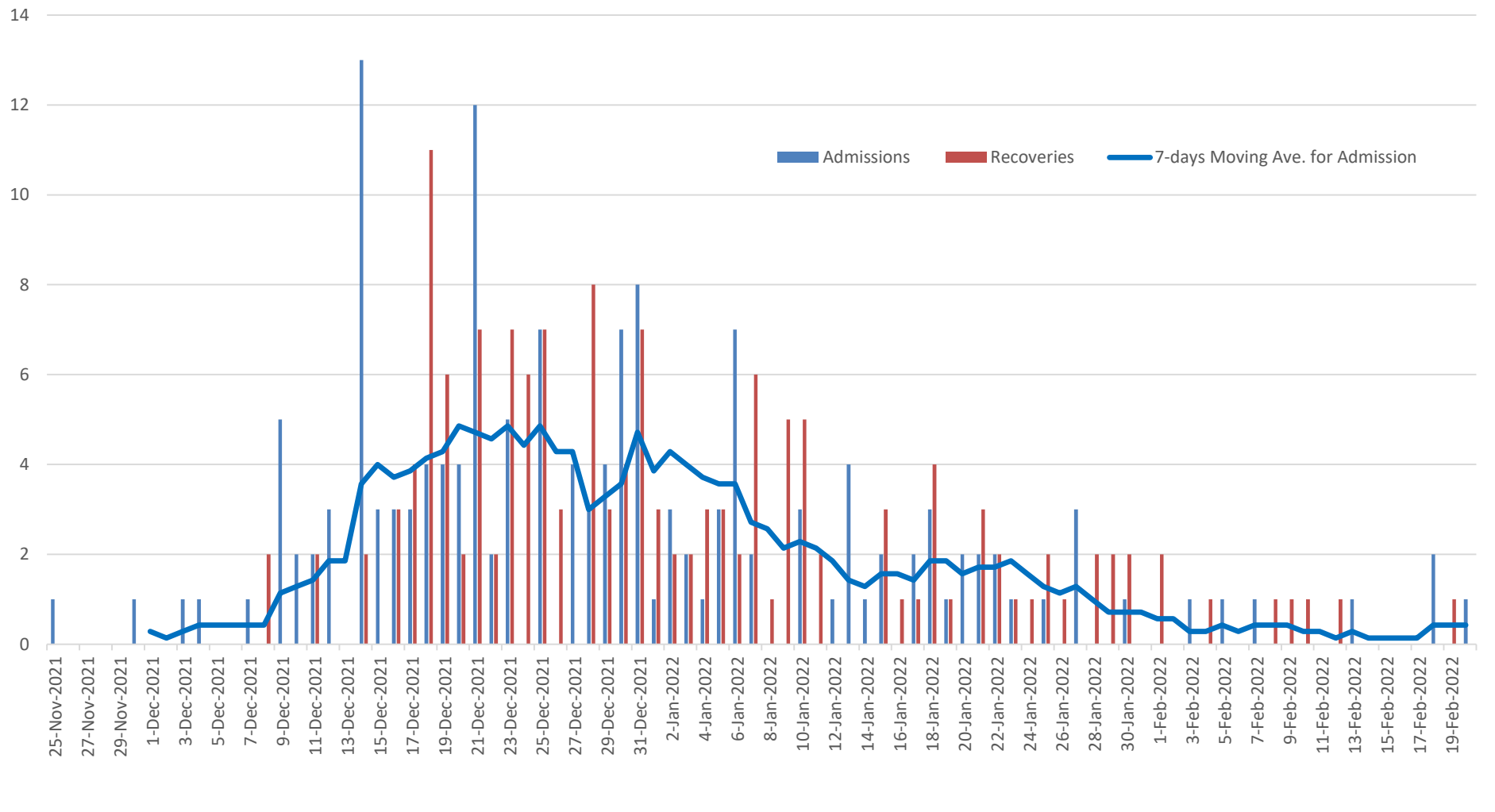
- ★ New Death [0%]
- ★ New Case [0.02%]
- Active [0.4%]
- Recovered [96.6%]
- Dead [3.0%]
- Possible Reinfectior [0.5%]

100%

Summary of confirmed, recovered, active, and dead cases by reporting counties, Liberia, 16 March 2020 – 20 February 2022

County	Confirmed Cases		Recovered Cases		Active Cases	Dead Cases	
	New	Cum	New	Cum		New	Cum
Bomi	0	64	0	61	1	0	2
Bong	0	149	0	129	0	0	20
Gbarpolu	0	62	0	60	0	0	2
Grand Bassa	0	108	0	101	1	0	6
Grand Cape Mount	0	58	0	58	0	0	0
Grand Gedeh	0	63	0	63	0	0	0
Grand Kru	0	26	0	26	0	0	0
Lofa	0	165	0	130	0	0	35
Margibi	0	297	0	290	0	0	7
Maryland	0	359	0	345	0	0	14
Montserrado	1	5700	0	5507	24	0	169
Nimba	0	233	0	200	0	0	33
Rivercess	0	16	0	13	0	0	3
River Gee	0	69	0	68	0	0	1
Sinoe	0	13	0	11	0	0	2
National	1	7382	0	7062	26	0	294

4th Wave - Starbase Treatment Unit



Covid-19 Vaccination Summary (Feb 20, 2022)

County	Total Population	12 years & older (Target Pop.)	J&J	J&J Booster	AZD1222 Dose 2	AZD1222 Dose 1	AZD1222 Booster	Pfizer Dose 1	Pfizer Dose 2	Pfizer Booster	Booster Total	Number of Persons Fully Vaccinated	Grand Total						
Bomi	112526	73446	9047		587	671		█	█	█	0	9634	10305						
Bong	446099	291169	70792		1746	3203		█	█	█	0	72538	75741						
Gbarpolu	111548	72808	12485		330	945		█	█	█	0	12815	13760						
Grand Bassa	296560	193564	48910		1892	2675	1	█	█	█	1	50802	53478						
Grand Cape Mount	169990	110953	13176		750	1082		█	█	█	0	13926	15008						
Grand Gedeh	167558	109365	11566		1143	3591		█	█	█	0	12709	16300						
Grand Kru	77470	50565	4602		689	740		█	█	█	0	5291	6031						
Lofa	370361	241734	58608	1	3384	4000		█	█	█	1	61992	65993						
Margibi	280815	183288	30283		4972	14778	1	█	█	█	1	35255	50034						
Maryland	181845	118690	20307	4	1221	5206		█	█	█	4	21528	26738						
Montserrado	1495876	976358	457811	52	58785	66892	14	357	23	1725	1791	516619	585659						
Nimba	618054	403404	173103	1	5835	8850		[REDACTED]			1	178938	187789						
River Gee	95657	62436	4840		718	815	1				[REDACTED]			1	5558	6374			
Rivercess	89345	58315	8513		293	645								[REDACTED]			0	8806	9451
Sinoe	136970	89400	8777		445	619											[REDACTED]		
Liberia	4,650,676	3,035,497	932,820	58	82,790	114,712	17	357	23	1,725									

Home-Base Care of COVID-19 – 20 February 2022

County	New Admissions	Currently in Admissions	No. Followed-up (In-person/Phone)	Cumulative Admissions	New Recoveries	Cumulative Recoveries	Referrals to TU	Cumulative Referrals to TU	New Death	Cumulative Deaths
Montserrat	0	0	0	2239	0	2210	0	29	0	0
Nimba	0	0	0	108	0	96				
Bong				0						
Maryland	0	0								
Cape Mount										
Lofa										
Margibi	0	0		1	0	1				
Total:	0	0	0	2348	0	2307	0	29	0	0

Laboratory Samples Evaluated – 20 February 2022

County	Sample Evaluated	New Positive	Repeat Positive	Initial Negative	Repeat Test Negative	Pending Lab Result
Grand Cape Mount	4	0	0	4	0	0
Margibi	8	0	0	8	0	0
Montserrat	170	0	0	170	0	0
Nimba	1	0	0	1	0	0
Total	183	0	0	183	0	0
Outgoing Travelers	183	0	0	183	0	0
Incoming Travelers (RDT)*	246	1	0	245	0	0
NRL	123	0	0	123	0	0
Union Testing Center (RDT)	60	0	0	60	0	0

Summary of COVID-19 Contact Tracing in Response Counties

County	New Contacts Line listed	Cumulative Contacts	No. of Health Care Workers as Contacts	Cumulative no. of Health Care Workers as contacts	Contacts became a case	Cumulative contacts that became a case	Contacts Completed 14 Days	Cumulative Contacts Completing 14 Days	Contacts Under Follow-up	Contacts lost to Follow-up
Montserrado	0	10297	0	794	0	250	0	10297	0	0
Margibi	0	1895	0	135	0	44	0	1895	0	0
Grand Bassa	0	438	0	150	0	63	0	438	0	0
Sinoe	0	229	0	35	0	4	0	229	0	0
Lofa	0	758	0	103	0	34	0	758	0	0
Nimba	0	1141	0	149	0	25	0	1141	0	0
Bong	0	539	0	73	0	28	0	539	0	0
Gbarpolu	0	133	0	13	0	8	0	133	0	0
Grand Cape Mount	0	248	0	0	0	6	0	248	0	0
RiverGee	0	133	0	15	0	31	0	133	0	0
Maryland	0	793	0	86	0	24	0	793	0	0
Bomi	0	289	0	24	0	52	0	289	0	0
Rivercess	0	102	0	62	0	6	0	102	0	0
Grand Kru	0	333	0	131	0	17	0	333	0	0
Grand Gedeh	0	286	0	2	0	9	0	286	0	0
National	0	17614	0	1772	0	601	0	17614	0	0

Thank you for Listening