



Liberia COVID-19 Daily Sitrep 732 (March 17, 2022)

Summary of COVID-19 Cases by Reporting County, Liberia, 16 March 2020 – 17 March 2022

County	Laboratory Confirmed Cases	Confirmed Cases on Contact List	Confirmed Cumulative Cases
Bomi	0	0	64
Bong	0	0	149
Gbarpolu	0	0	62
Grand Bassa	0	0	108
Grand Cape Mount	0	0	61
Grand Kru	0	0	26
Grand Gedeh	0	0	63
Lofa	0	0	165
Margibi	0	0	297
Maryland	0	0	359
Montserrado	0	0	5707
Nimba	1	0	236
Rivercess	0	0	16
River Gee	0	0	69
Sinoe	0	0	13
NATIONAL	1	0	7395

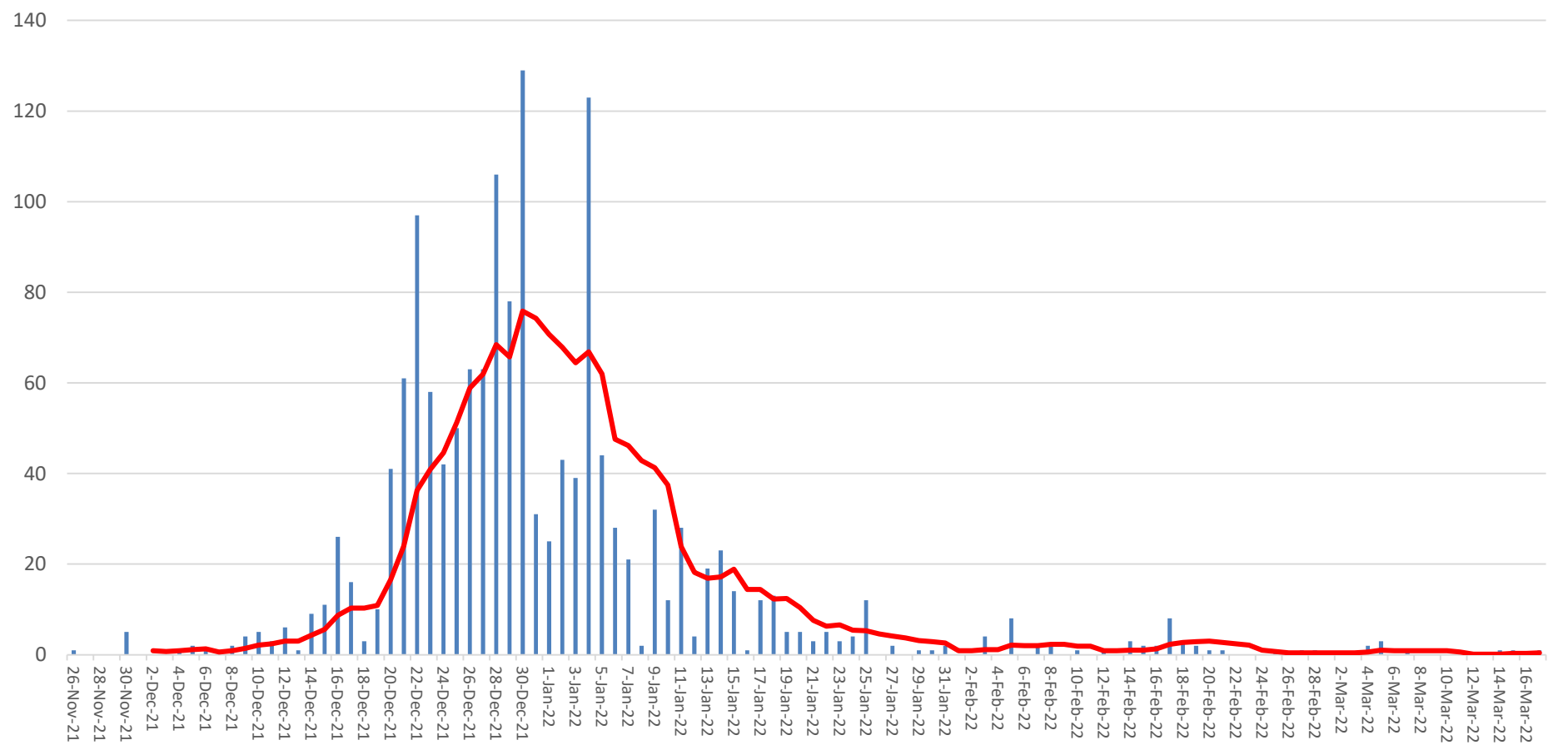
Summary of COVID-19 Deaths by Reporting County, Liberia, 16 March 2020 – 17 March 2022

County	ew Suspected Deaths	COVID-19 Treatment Unit	Total in COVID-19 Treatment Unit	Health Facility	Total in Health Facility	Community	Total in Community	Confirmed Deaths on Contact List	Cumulative Deaths
Bomi	0	0	0	0	2	0	0	0	2
Bong	0	0	4	0	13	0	3	0	20
Gbarpolu	0	0	0	0	2	0	0	0	2
Grand Bassa	0	0	0	0	6	0	0	0	6
Grand Cape Mount	0	0	0	0	0	0	0	0	0
Grand Gedeh	0	0	0	0	0	0	0	0	0
Grand Kru	0	0	0	0	0	0	0	0	0
Lofa	0	0	3	0	18	0	14	0	35
Maryland	0	0	4	0	8	0	2	0	14
Margibi	0	0	2	0	5	0	0	0	7
Montserrado	0	0	46	0	105	0	18	0	169
Nimba	0	0	8	0	21	0	4	0	33
Rivercess	0	0	0	0	2	0	1	0	3
River Gee	0	0	1	0	0	0	0	0	1
Sinoe	0	0	0	0	2	0	0	0	2
National	0	0	68	0	184	0	42	0	294

Daily and Cumulative Healthcare Worker (HCW) COVID-19 Cases and Deaths by County, Liberia, 16 March 2020 – 17 March 2022

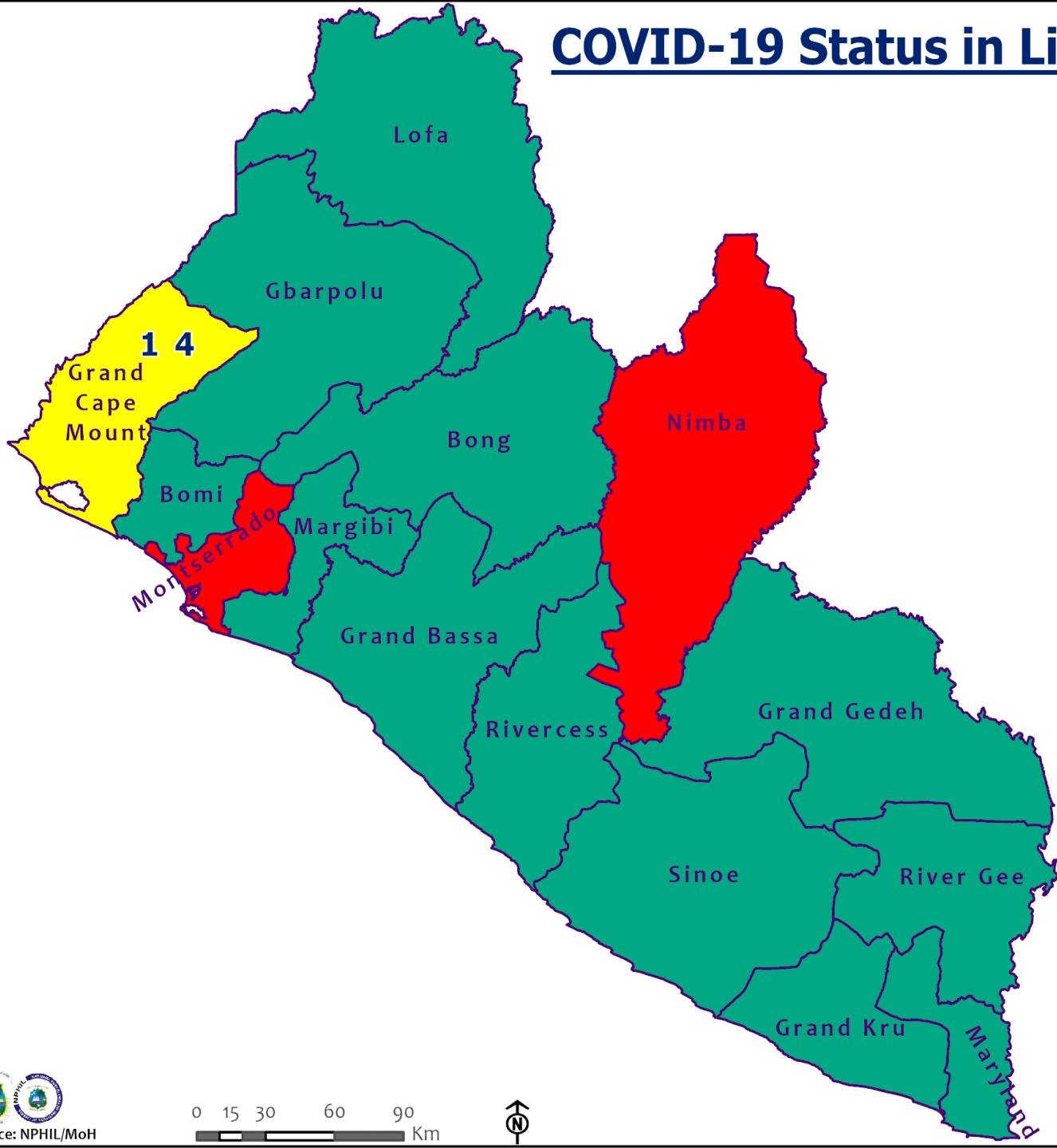
County	New Suspected & High Risk Cases (Alive)			New Suspect Death	Laboratory Confirmed Cases	Confirmed Cases on Contact List	CUMULATIVE CASES (ALIVE & DEAD)	
	Suspect	High Risk	Total				Confirmed	Deaths
Bomi	0	0	0	0	0	0	19	0
Bong	0	0	0	0	0	0	30	4
Gbarpolu	0	0	0	0	0	0	1	1
Grand Bassa	0	0	0	0	0	0	26	0
Grand Gedeh	0	0	0	0	0	0	2	0
Grand Kru	0	0	0	0	0	0	14	0
Grand Cape Mount	0	0	0	0	0	0	0	0
Lofa	0	0	0	0	0	0	30	0
Margibi	0	0	0	0	0	0	22	1
Maryland	0	0	0	0	0	0	39	0
Montserrado	0	0	0	0	0	0	172	2
Nimba	0	0	0	0	0	0	30	0
Rivercess	0	0	0	0	0	0	6	0
River Gee	0	0	0	0	0	0	10	0
Sinoe	0	0	0	0	0	0	3	0
NATIONAL	0	0	0	0	0	0	404	8

Covid-19 Daily Cases & 7 Days Moving Average



COVID-19 Status in Liberia by County

March 17, 2022



Legend

County Status

- Preparedness
- 14-Day Countdown
- Response



Data Source: NPHIL/MoH



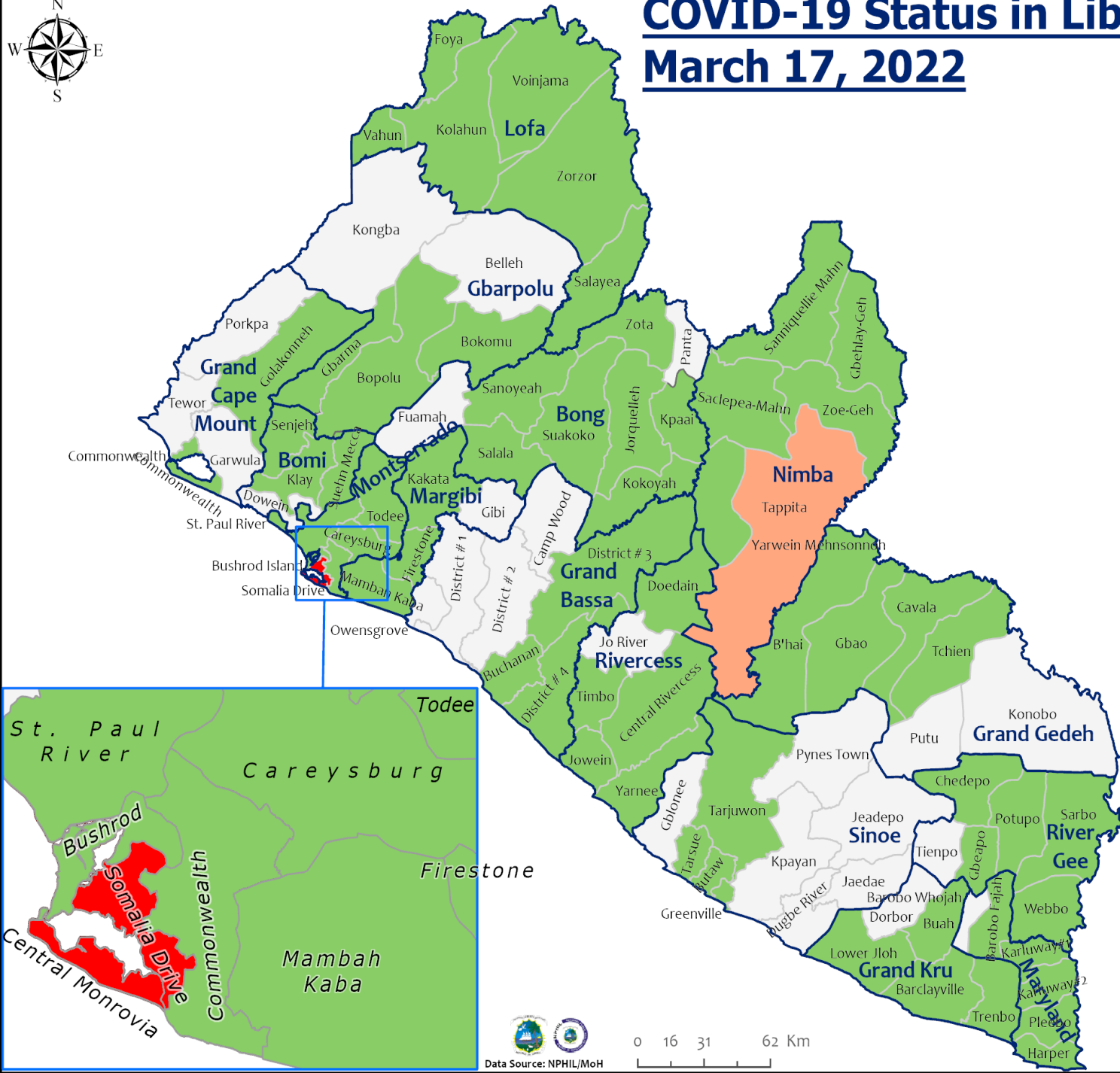
COVID-19 Status in Liberia by District

March 17, 2022



Total Cases: 7,395

Affected Counties	Cumulative Cases
Montserrado	5,707
Maryland	359
Margibi	297
Nimba	236
Lofa	165
Bong	149
Grand Bassa	108
River Gee	69
Bomi	64
Grand Gedeh	63
Gbarpolu	62
Grand Cape Mount	61
Grand Kru	26
Rivercess	16
Sinoe	13

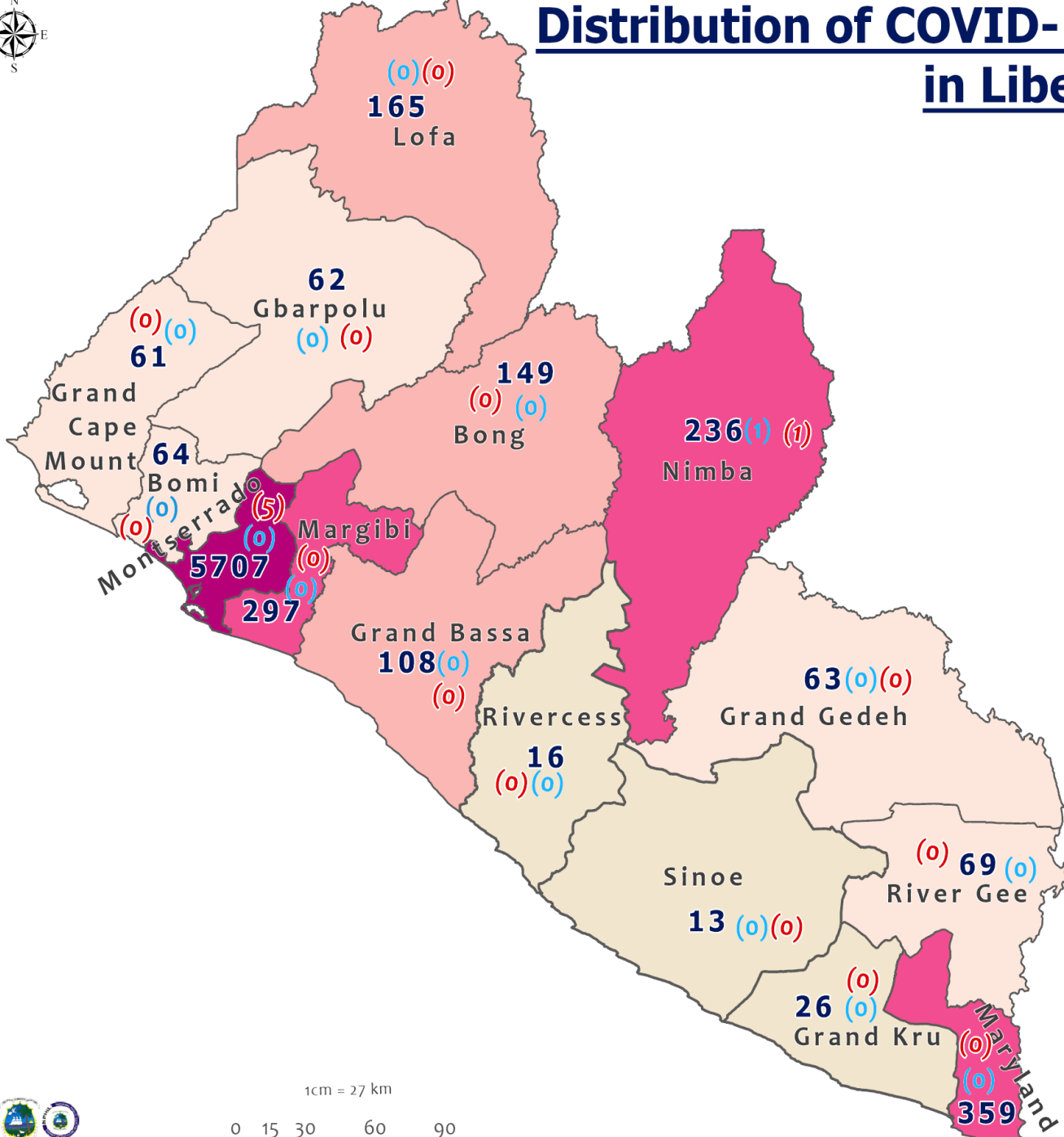
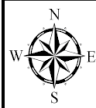


Legend

District Status

- Never had a case
- Back from recovery or first time with active case(s)
- With active cases(s)
- With recovered cases only

Distribution of COVID-19 Cases by County in Liberia March 17, 2022



Total cumulative cases:
7,395

Total active cases:
6

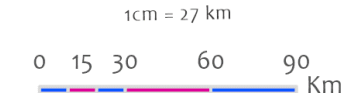
Total new cases:
1

Legend
Number of Cases

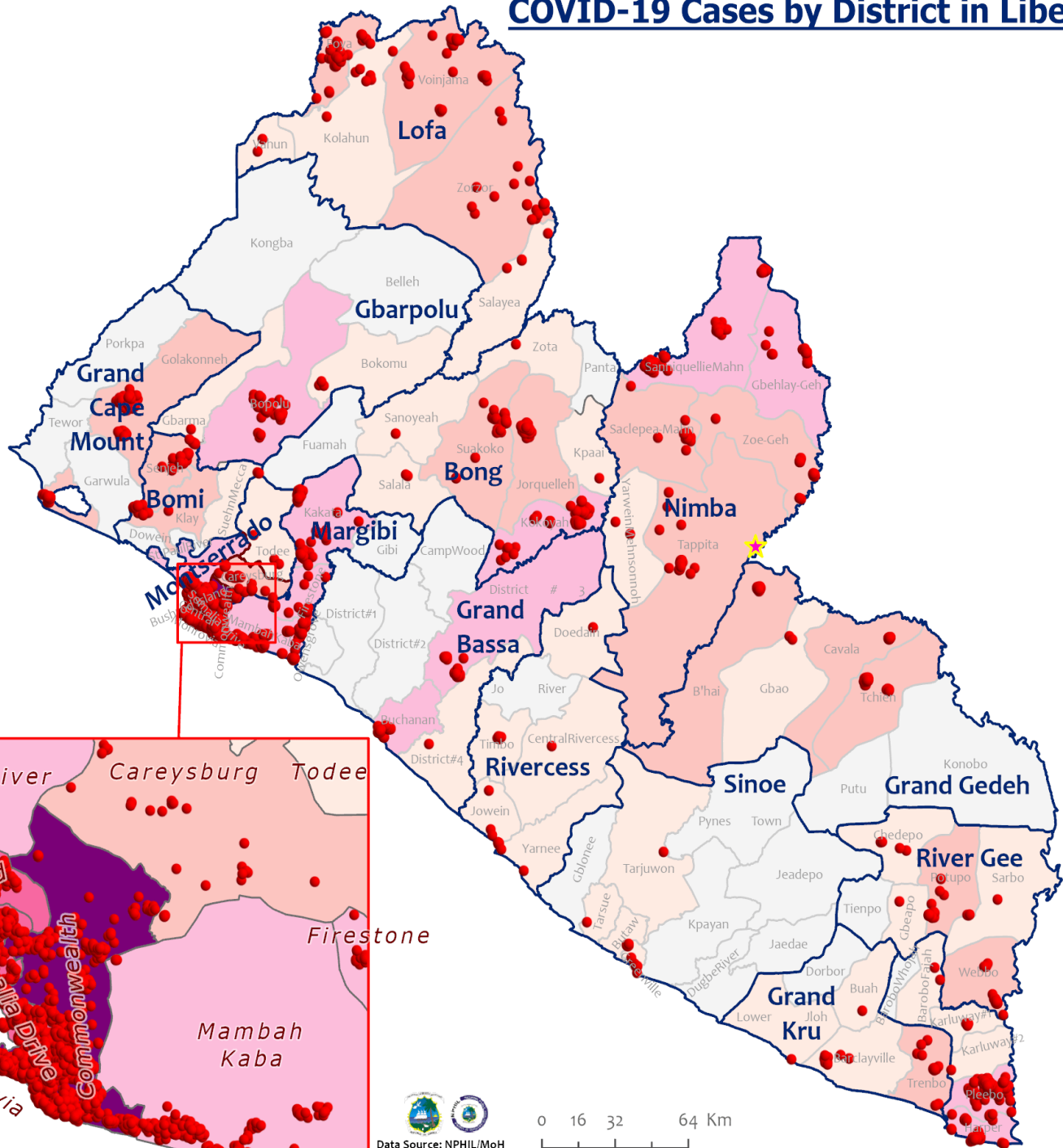
- 1 - 50
- 51 - 100
- 101 - 200
- 201 - 500
- 501 - 6000

Cumulative cases
Active cases
New cases

0 (0) (0)



COVID-19 Cases by District in Liberia - March 17, 2022



Total Cases: 7,395

Affected Counties	Cumulative Cases
Montserrado	5,707
Maryland	359
Margibi	297
Nimba	236
Lofa	165
Bong	149
Grand Bassa	108
River Gee	69
Bomi	64
Grand Gedeh	63
Gbarpolu	62
Grand Cape Mount	61
Grand Kru	26
Rivercess	16
Sinoe	13

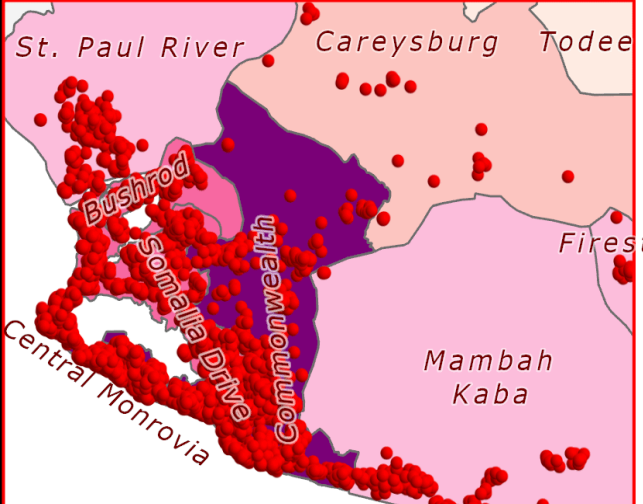
Legend

Case Status

- ★ New confirmed case
- Confirmed cases

Cases / District

- 0
- 1-10
- 11-50
- 51-500
- 501-1000
- 1001-1500
- 1501-2000

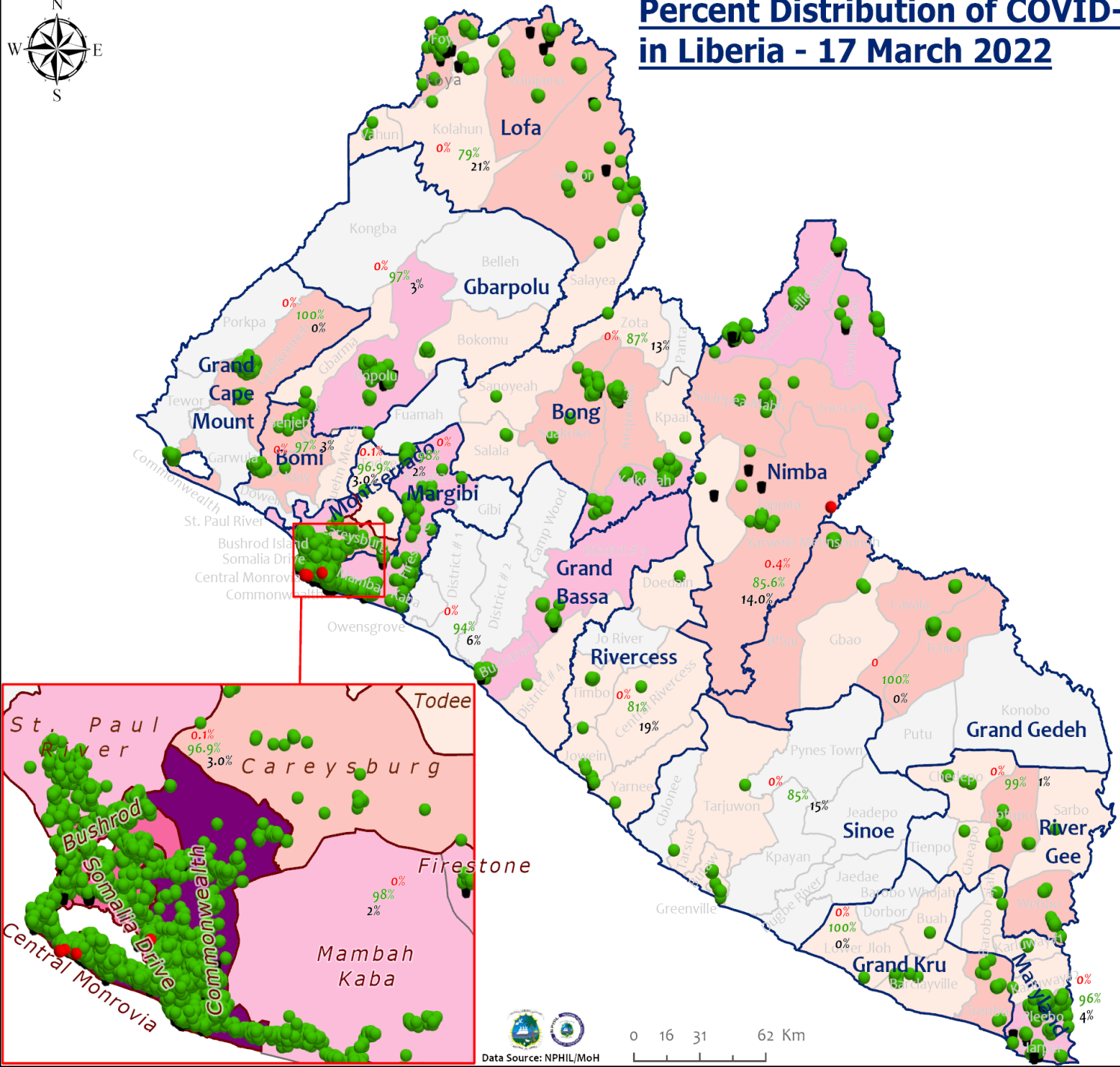


Percent Distribution of COVID-19 Cases by Status in Liberia - 17 March 2022



Total Cases: 7,395

Affected Counties	Cumulative Cases
Montserrado	5,707
Maryland	359
Margibi	297
Nimba	236
Lofa	165
Bong	149
Grand Bassa	108
River Gee	69
Bomi	64
Grand Gedeh	63
Gbarpolu	62
Grand Cape	61
Mount	61
Grand Kru	26
Rivercess	16
Sinoe	13



Legend

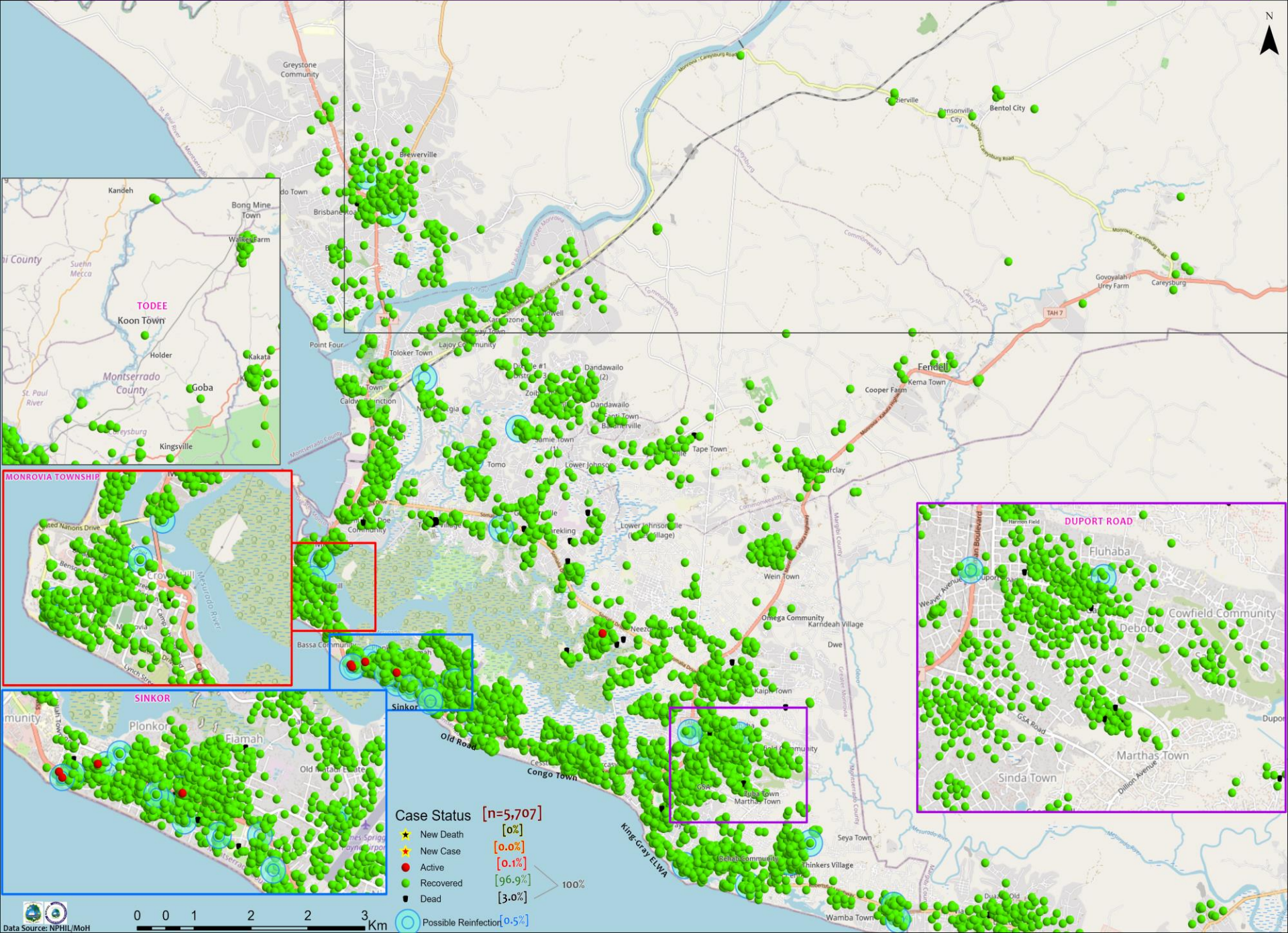
Case Status

- Active [0.1%]
- Recovered [95.9%]
- Dead [4.0%]

Cases / District

- 0
- 1-10
- 11-50
- 51-500
- 501-1000
- 1001-1500
- 1501-2000

Distribution of COVID-19 Cases in Montserrado Communities, Liberia March 17, 2022

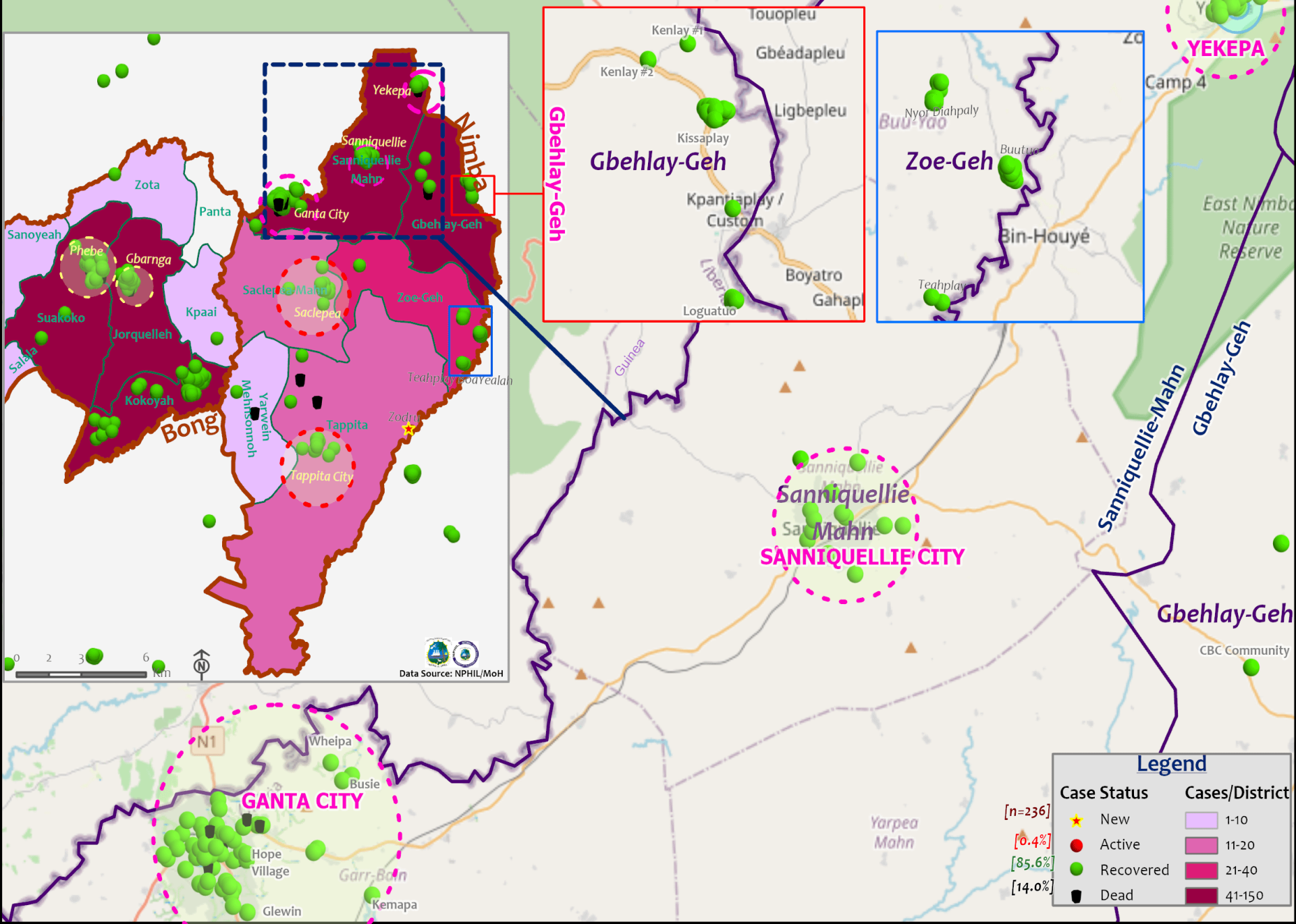


Case Status [n=5,707]

★ New Death	[0%
★ New Case	[0.0%
● Active	[0.1%
● Recovered	[96.9%
■ Dead	[3.0%
○ Possible Reinfectior	[0.5%

100%

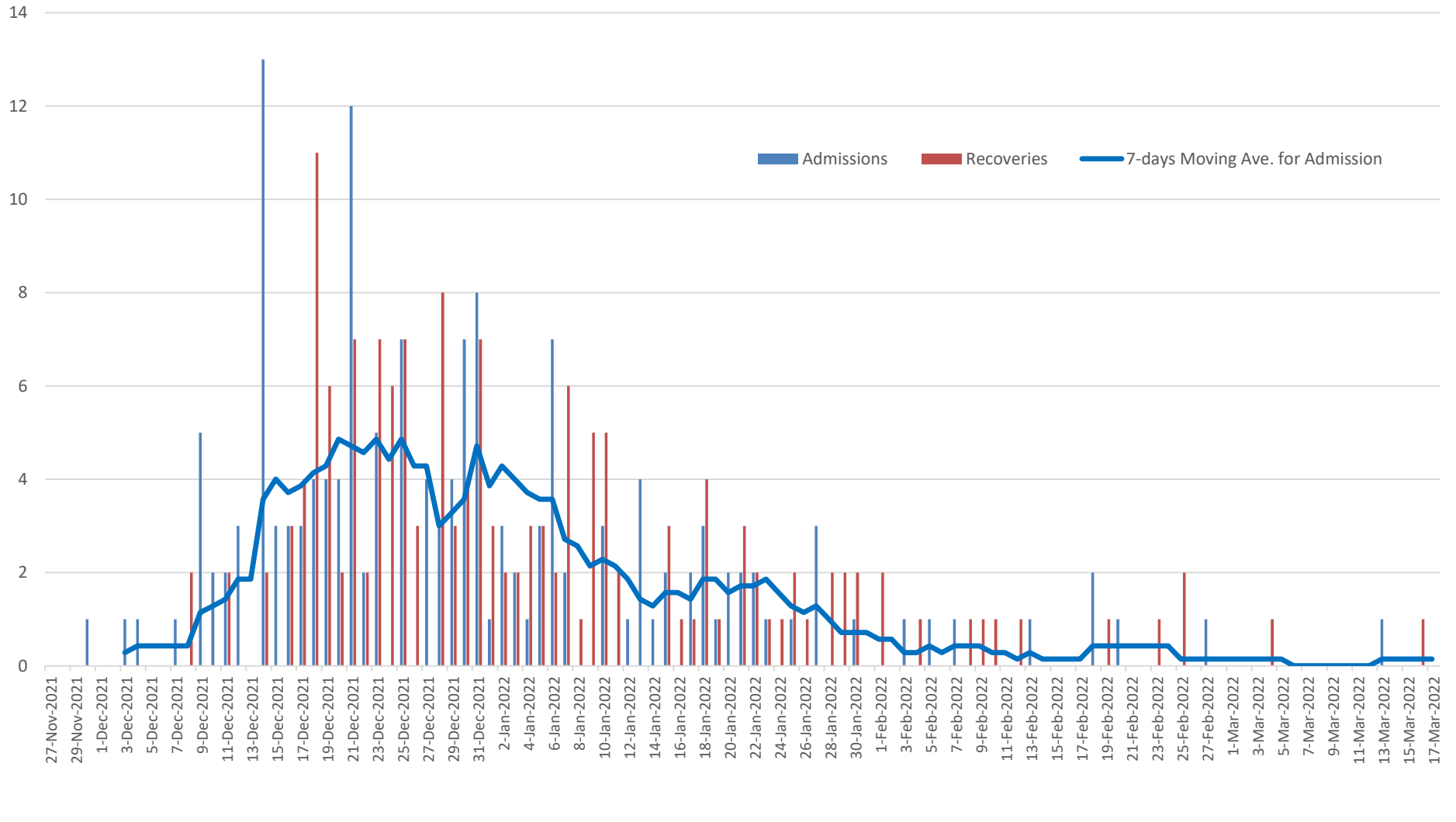
Distribution of COVID-19 Cases in Nimba, Liberia - March 17, 2022



Summary of confirmed, recovered, active, and dead cases by reporting counties, Liberia, 16 March 2020 – 17 March 2022

County	Confirmed Cases		Recovered Cases		Active Cases	Dead Cases	
	New	Cum	New	Cum		New	Cum
Bomi	0	64	0	62	0	0	2
Bong	0	149	0	129	0	0	20
Gbarpolu	0	62	0	60	0	0	2
Grand Bassa	0	108	0	102	0	0	6
Grand Cape Mount	0	61	0	61	0	0	0
Grand Gedeh	0	63	0	63	0	0	0
Grand Kru	0	26	0	26	0	0	0
Lofa	0	165	0	130	0	0	35
Margibi	0	297	0	290	0	0	7
Maryland	0	359	0	345	0	0	14
Montserrado	0	5707	0	5533	5	0	169
Nimba	1	236	0	202	1	0	33
Rivercess	0	16	0	13	0	0	3
River Gee	0	69	0	68	0	0	1
Sinoe	0	13	0	11	0	0	2
National	1	7395	0	7095	6	0	294

4th Wave - Starbase Treatment Unit



Home-Base Care of COVID-19 – 17 March 2022

County	New Admissions	Currently in Admissions	No. Followed-up (In-person/Phone)	Cumulative Admissions	New Recoveries	Cumulative Recoveries	Referrals to TU	Cumulative Referrals to TU	New Death	Cumulative Deaths
Montserrat	0	0	0	2239	0	2210	0	29	0	0
Nimba	0	0	0	108	0	96				
Bong				0						
Maryland	0	0								
Cape Mount										
Lofa										
Margibi	0	0		1	0	1				
Total:	0	0	0	2348	0	2307	0	29	0	0

Laboratory Samples Evaluated – 17 March 2022

County	Sample Evaluated	New Positive	Repeat Positive	Initial Negative	Repeat Test Negative	Pending Lab Result
Grand Bassa	4	0	0	4	0	0
Margibi	15	0	0	15	0	0
Montserrado	305	0	0	305	0	0
Nimba	3	0	0	3	0	0
Total	327	0	0	327	0	0
Outgoing Travelers	325	0	0	325	0	0
Voluntary testing	2	0	0	2	0	0
Incoming Travelers (RDT)*	210	0	0	210	0	0
NRL	146	0	0	146	0	0
Union Testing Center (RDT)	168	0	0	168	0	0
UN Clinic	9	0	0	9	0	0
US Embassy Lab	4	0	0	4	0	0

Summary of COVID-19 Contact Tracing in Response Counties

County	New Contacts Line listed	Cumulative Contacts	No. of Health Care Workers as Contacts	Cumulative no. of Health Care Workers as contacts	Contacts became a case	Cumulative contacts that became a case	Contacts Completed 14 Days	Cumulative Contacts Completing 14 Days	Contacts Under Follow-up	Contacts lost to Follow-up
Montserrado	0	10299	0	794	0	250	0	10299	0	0
Margibi	0	1895	0	135	0	44	0	1895	0	0
Grand Bassa	0	438	0	150	0	63	0	438	0	0
Sinoe	0	229	0	35	0	4	0	229	0	0
Lofa	0	758	0	103	0	34	0	758	0	0
Nimba	8	1160	0	149	0	25	0	1152	8	0
Bong	0	539	0	73	0	28	0	539	0	0
Gbarpolu	0	133	0	13	0	8	0	133	0	0
Grand Cape Mount	0	248	0	0	0	6	0	248	0	0
RiverGee	0	133	0	15	0	31	0	133	0	0
Maryland	0	793	0	86	0	24	0	793	0	0
Bomi	0	289	0	24	0	52	0	289	0	0
Rivercess	0	102	0	62	0	6	0	102	0	0
Grand Kru	0	333	0	131	0	17	0	333	0	0
Grand Gedeh	0	286	0	2	0	9	0	286	0	0
National	8	17635	0	1772	0	601	0	17627	8	0

Thank you for Listening