



Liberia COVID-19 Daily Sitrep 756 (April 10, 2022)

Summary of COVID-19 Cases by Reporting County, Liberia, 16 March 2020 – 10 April 2022

| County | Laboratory Confirmed Cases | Confirmed Cases on Contact List | Confirmed Cumulative Cases |
|-------------------------|-------------------------------|------------------------------------|-------------------------------|
| Bomi | 0 | 0 | 64 |
| Bong | 0 | 0 | 149 |
| Gbarpolu | 0 | 0 | 62 |
| Grand Bassa | 0 | 0 | 109 |
| Grand Cape Mount | 0 | 0 | 61 |
| Grand Kru | 0 | 0 | 26 |
| Grand Gedeh | 0 | 0 | 63 |
| Lofa | 0 | 0 | 165 |
| Margibi | 0 | 0 | 297 |
| Maryland | 0 | 0 | 359 |
| Montserrado | 0 | 0 | 5729 |
| Nimba | 0 | 0 | 239 |
| Rivercess | 0 | 0 | 16 |
| River Gee | 0 | 0 | 69 |
| Sinoe | 0 | 0 | 13 |
| NATIONAL | 0 | 0 | 7421 |

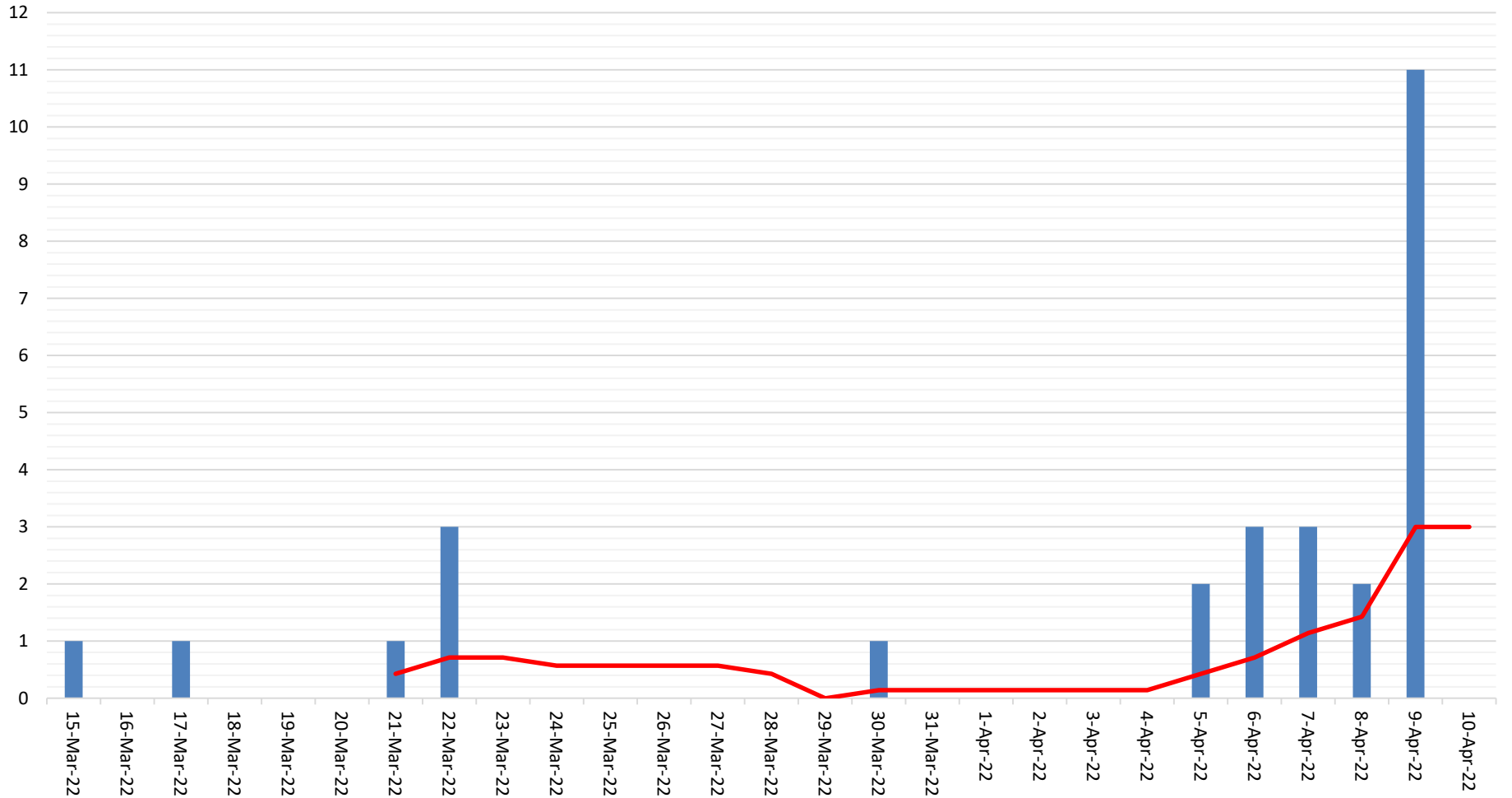
Summary of COVID-19 Deaths by Reporting County, Liberia, 16 March 2020 – 10 April 2022

| County | ew Suspected Deaths | COVID-19 Treatment Unit | Total in COVID-19 Treatment Unit | Health Facility | Total in Health Facility | Community | Total in Community | Confirmed Deaths on Contact List | Cumulative Deaths |
|------------------|---------------------|-------------------------|----------------------------------|-----------------|--------------------------|-----------|--------------------|----------------------------------|-------------------|
| Bomi | 0 | 0 | 0 | 0 | 2 | 0 | 0 | 0 | 2 |
| Bong | 0 | 0 | 4 | 0 | 13 | 0 | 3 | 0 | 20 |
| Gbarpolu | 0 | 0 | 0 | 0 | 2 | 0 | 0 | 0 | 2 |
| Grand Bassa | 0 | 0 | 0 | 0 | 6 | 0 | 0 | 0 | 6 |
| Grand Cape Mount | 0 | 0 | 0 | 0 | 0 | 0 | 0 | 0 | 0 |
| Grand Gedeh | 0 | 0 | 0 | 0 | 0 | 0 | 0 | 0 | 0 |
| Grand Kru | 0 | 0 | 0 | 0 | 0 | 0 | 0 | 0 | 0 |
| Lofa | 0 | 0 | 3 | 0 | 18 | 0 | 14 | 0 | 35 |
| Maryland | 0 | 0 | 4 | 0 | 8 | 0 | 2 | 0 | 14 |
| Margibi | 0 | 0 | 2 | 0 | 5 | 0 | 0 | 0 | 7 |
| Montserrado | 0 | 0 | 46 | 0 | 105 | 0 | 18 | 0 | 169 |
| Nimba | 0 | 0 | 8 | 0 | 21 | 0 | 4 | 0 | 33 |
| Rivercess | 0 | 0 | 0 | 0 | 2 | 0 | 1 | 0 | 3 |
| River Gee | 0 | 0 | 1 | 0 | 0 | 0 | 0 | 0 | 1 |
| Sinoe | 0 | 0 | 0 | 0 | 2 | 0 | 0 | 0 | 2 |
| National | 0 | 0 | 68 | 0 | 184 | 0 | 42 | 0 | 294 |

Daily and Cumulative Healthcare Worker (HCW) COVID-19 Cases and Deaths by County, Liberia, 16 March 2020 – 10 April 2022

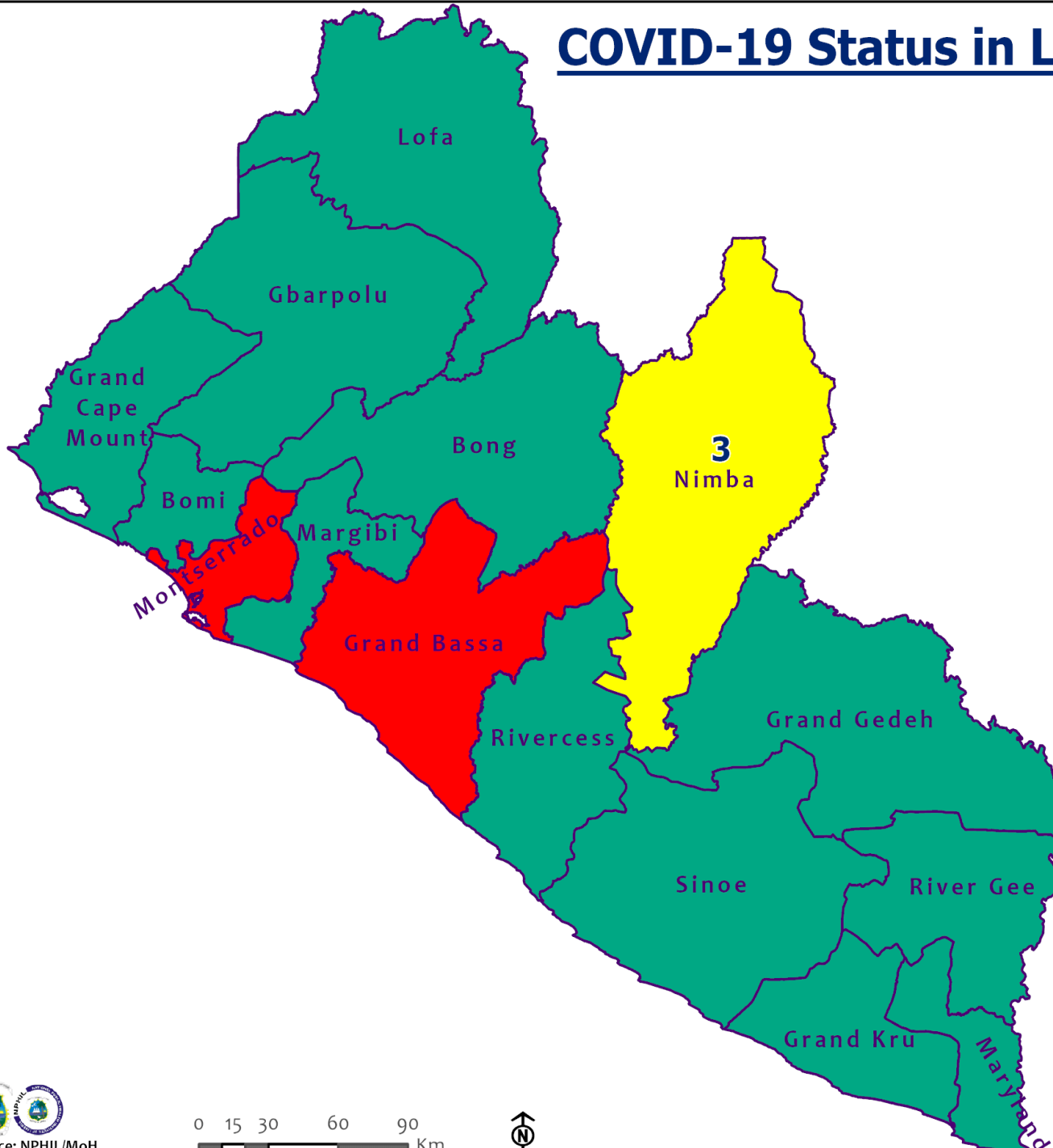
| County | New Suspected & High Risk Cases (Alive) | | | New Suspect Death | Laboratory Confirmed Cases | Confirmed Cases on Contact List | CUMULATIVE CASES (ALIVE & DEAD) | |
|------------------|---|-----------|----------|-------------------|----------------------------|---------------------------------|---------------------------------|----------|
| | Suspect | High Risk | Total | | | | Confirmed | Deaths |
| Bomi | 0 | 0 | 0 | 0 | 0 | 0 | 19 | 0 |
| Bong | 0 | 0 | 0 | 0 | 0 | 0 | 30 | 4 |
| Gbarpolu | 0 | 0 | 0 | 0 | 0 | 0 | 1 | 1 |
| Grand Bassa | 0 | 0 | 0 | 0 | 0 | 0 | 26 | 0 |
| Grand Gedeh | 0 | 0 | 0 | 0 | 0 | 0 | 2 | 0 |
| Grand Kru | 0 | 0 | 0 | 0 | 0 | 0 | 14 | 0 |
| Grand Cape Mount | 0 | 0 | 0 | 0 | 0 | 0 | 0 | 0 |
| Lofa | 0 | 0 | 0 | 0 | 0 | 0 | 30 | 0 |
| Margibi | 0 | 0 | 0 | 0 | 0 | 0 | 22 | 1 |
| Maryland | 0 | 0 | 0 | 0 | 0 | 0 | 39 | 0 |
| Montserrado | 0 | 0 | 0 | 0 | 0 | 0 | 172 | 2 |
| Nimba | 0 | 0 | 0 | 0 | 0 | 0 | 30 | 0 |
| Rivercess | 0 | 0 | 0 | 0 | 0 | 0 | 6 | 0 |
| River Gee | 0 | 0 | 0 | 0 | 0 | 0 | 10 | 0 |
| Sinoe | 0 | 0 | 0 | 0 | 0 | 0 | 3 | 0 |
| NATIONAL | 0 | 0 | 0 | 0 | 0 | 0 | 404 | 8 |

Covid-19 Daily Cases & 7 Days Moving Average



COVID-19 Status in Liberia by County

April 10, 2022



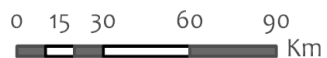
Legend

County Status

- Preparedness
- 14-Day Countdown
- Response

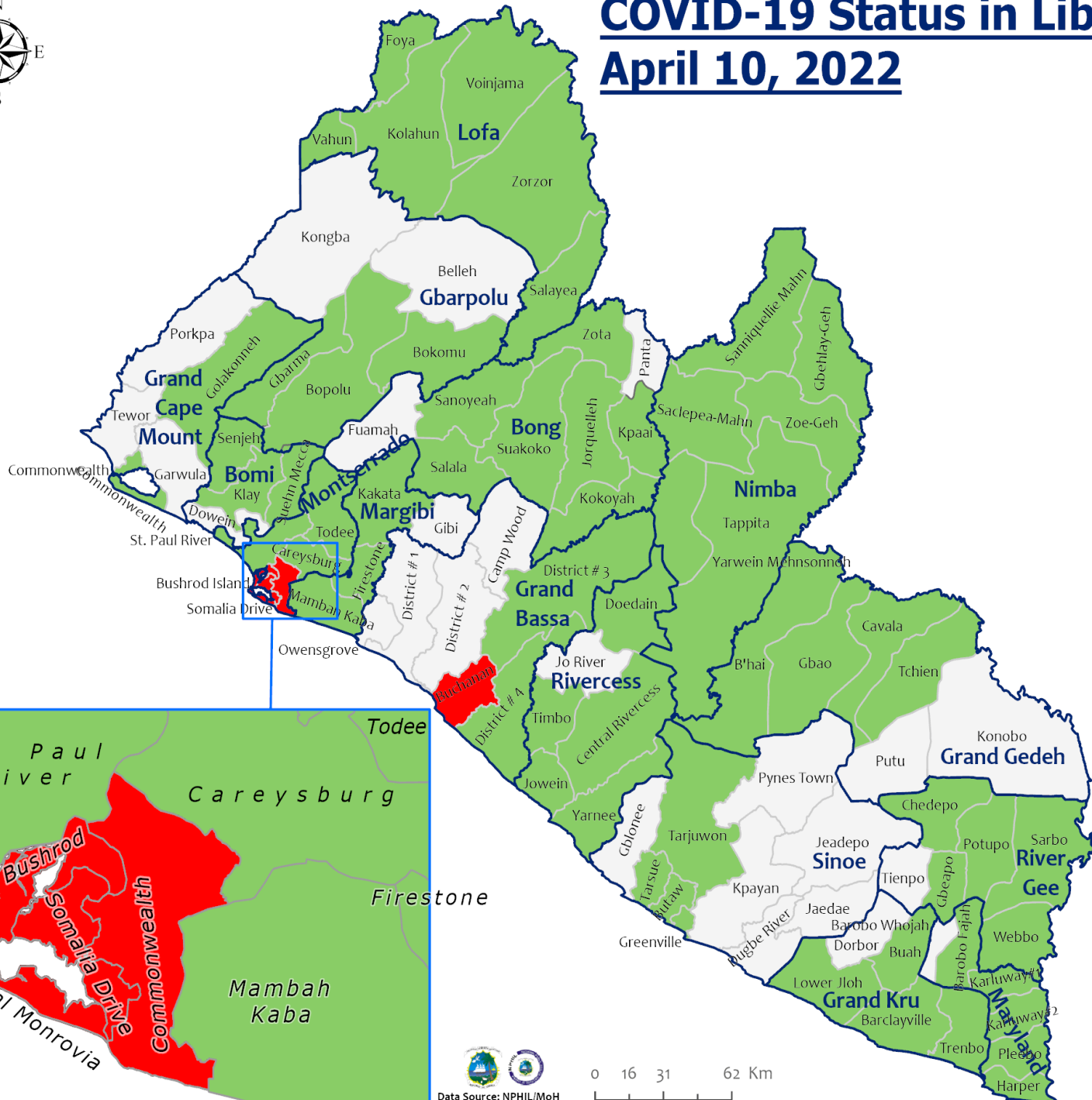


Data Source: NPHIL/MoH



COVID-19 Status in Liberia by District

April 10, 2022



Total Cases: 7,421

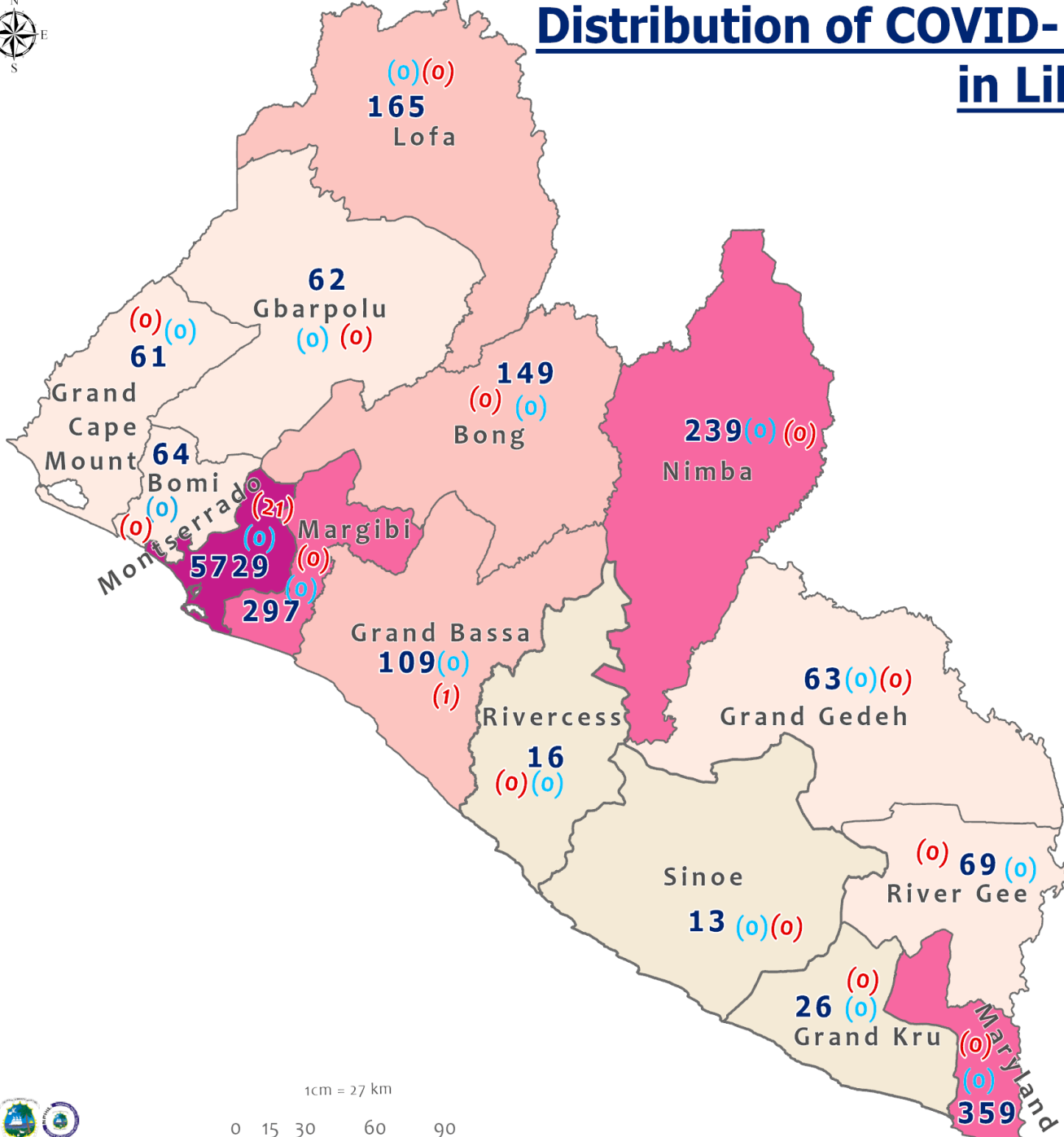
| Affected Counties | Cumulative Cases |
|-------------------|------------------|
| Montserrado | 5,729 |
| Maryland | 359 |
| Margibi | 297 |
| Nimba | 239 |
| Lofa | 165 |
| Bong | 149 |
| Grand Bassa | 109 |
| River Gee | 69 |
| Bomi | 64 |
| Grand Gedeh | 63 |
| Gbarpolu | 62 |
| Grand Cape | 61 |
| Mount | 61 |
| Grand Kru | 26 |
| Rivercess | 16 |
| Sinoe | 13 |

Legend

District Status

- Never had a case
- Back from recovery or first time with active case(s)
- With active case(s)
- With recovered cases only

Distribution of COVID-19 Cases by County in Liberia April 10, 2022



Total cumulative cases:
7,421

Total active cases:
22

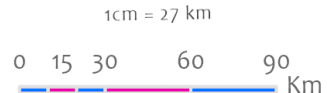
Total new cases:
0

Legend
 Number of Cases

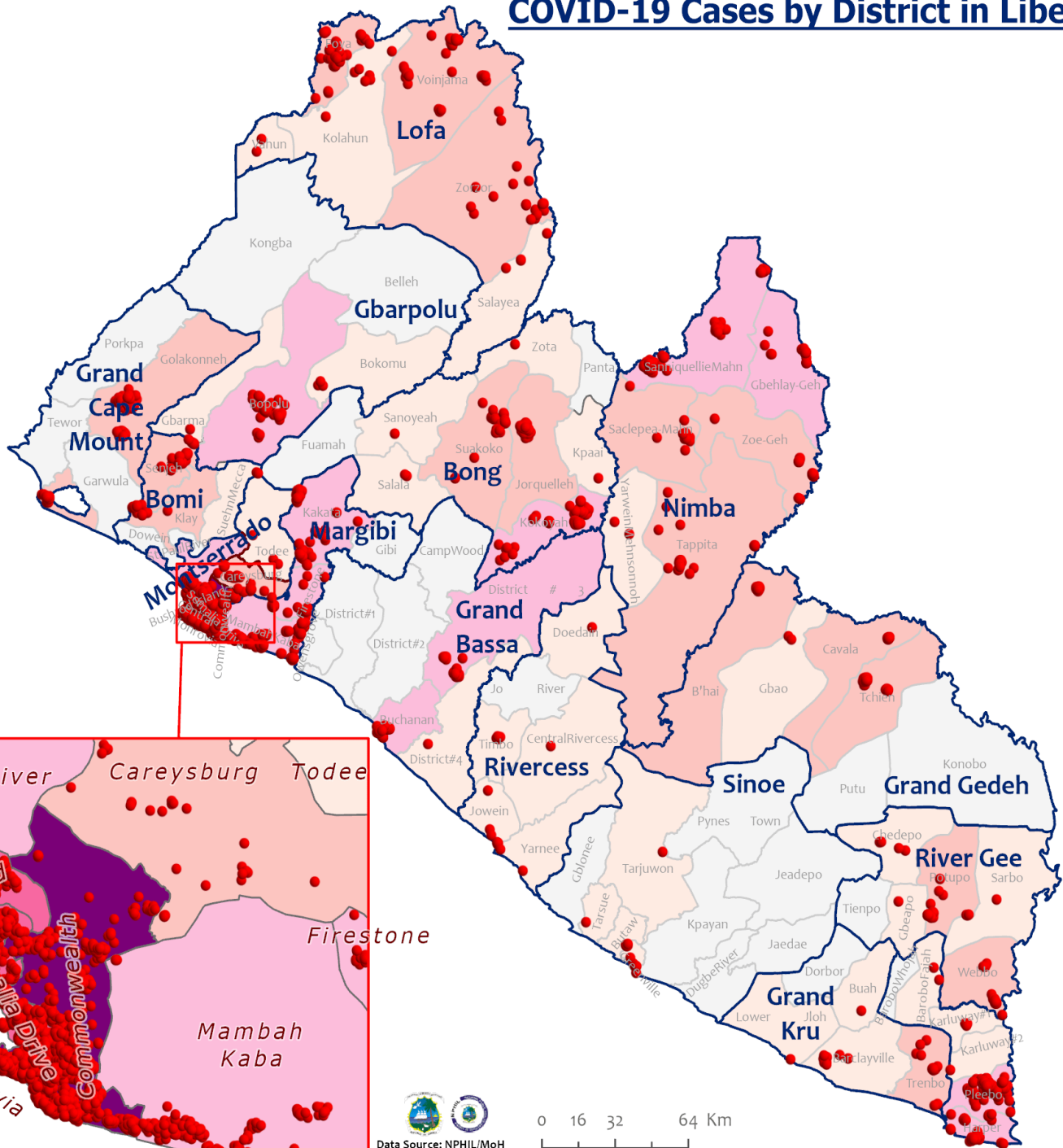
- 1 - 50
- 51 - 100
- 101 - 200
- 201 - 500
- 501 - 6000

Cumulative cases
Active cases
New cases

0 **(0)** **(0)**



COVID-19 Cases by District in Liberia - April 10, 2022



Total Cases: 7,421

| Affected Counties | Cumulative Cases |
|-------------------|------------------|
| Montserrado | 5,729 |
| Maryland | 359 |
| Margibi | 297 |
| Nimba | 239 |
| Lofa | 165 |
| Bong | 149 |
| Grand Bassa | 109 |
| River Gee | 69 |
| Bomi | 64 |
| Grand Gedeh | 63 |
| Gbarpolu | 62 |
| Grand Cape Mount | 61 |
| Grand Kru | 26 |
| Rivercess | 16 |
| Sinoe | 13 |

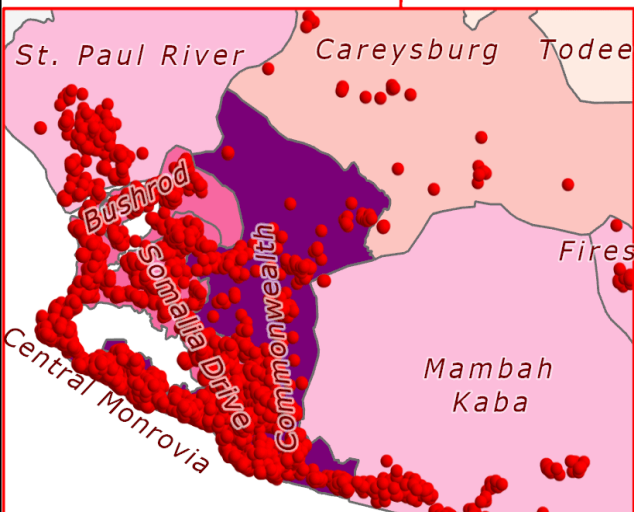
Legend

Case Status

- ★ New confirmed case
- Confirmed cases

Cases / District

- 0
- 1-10
- 11-50
- 51-500
- 501-1000
- 1001-1500
- 1501-2000



Percent Distribution of COVID-19 Cases by Status in Liberia - 10 April 2022



Total Cases: 7,421

| Affected Counties | Cumulative Cases |
|-------------------|------------------|
| Montserrado | 5,729 |
| Maryland | 359 |
| Margibi | 297 |
| Nimba | 239 |
| Lofa | 165 |
| Bong | 149 |
| Grand Bassa | 109 |
| River Gee | 69 |
| Bomi | 64 |
| Grand Gedeh | 63 |
| Gbarpolu | 62 |
| Grand Cape | 61 |
| Mount | 61 |
| Grand Kru | 26 |
| Rivercess | 16 |
| Sinoe | 13 |

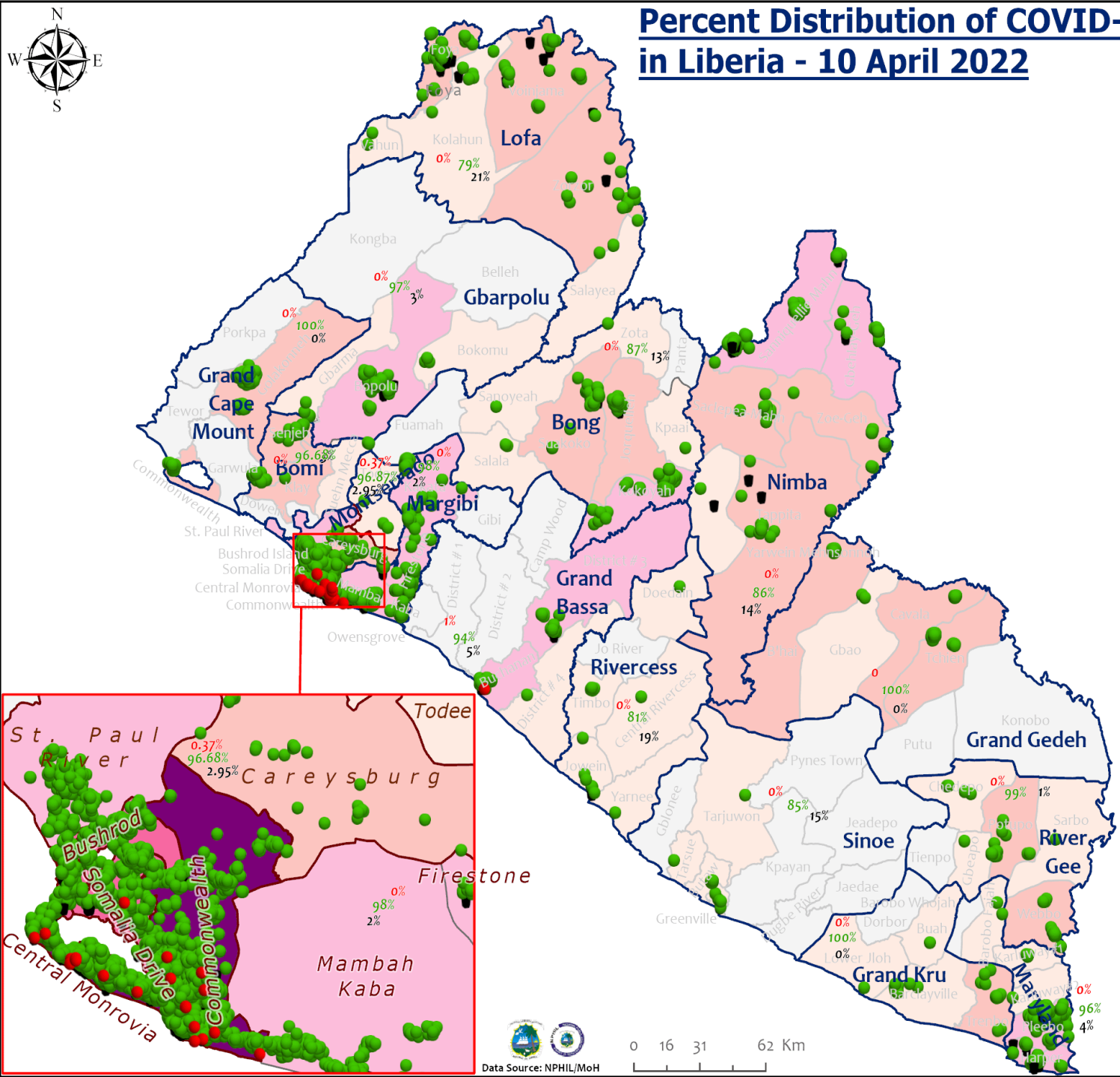
Legend

Case Status

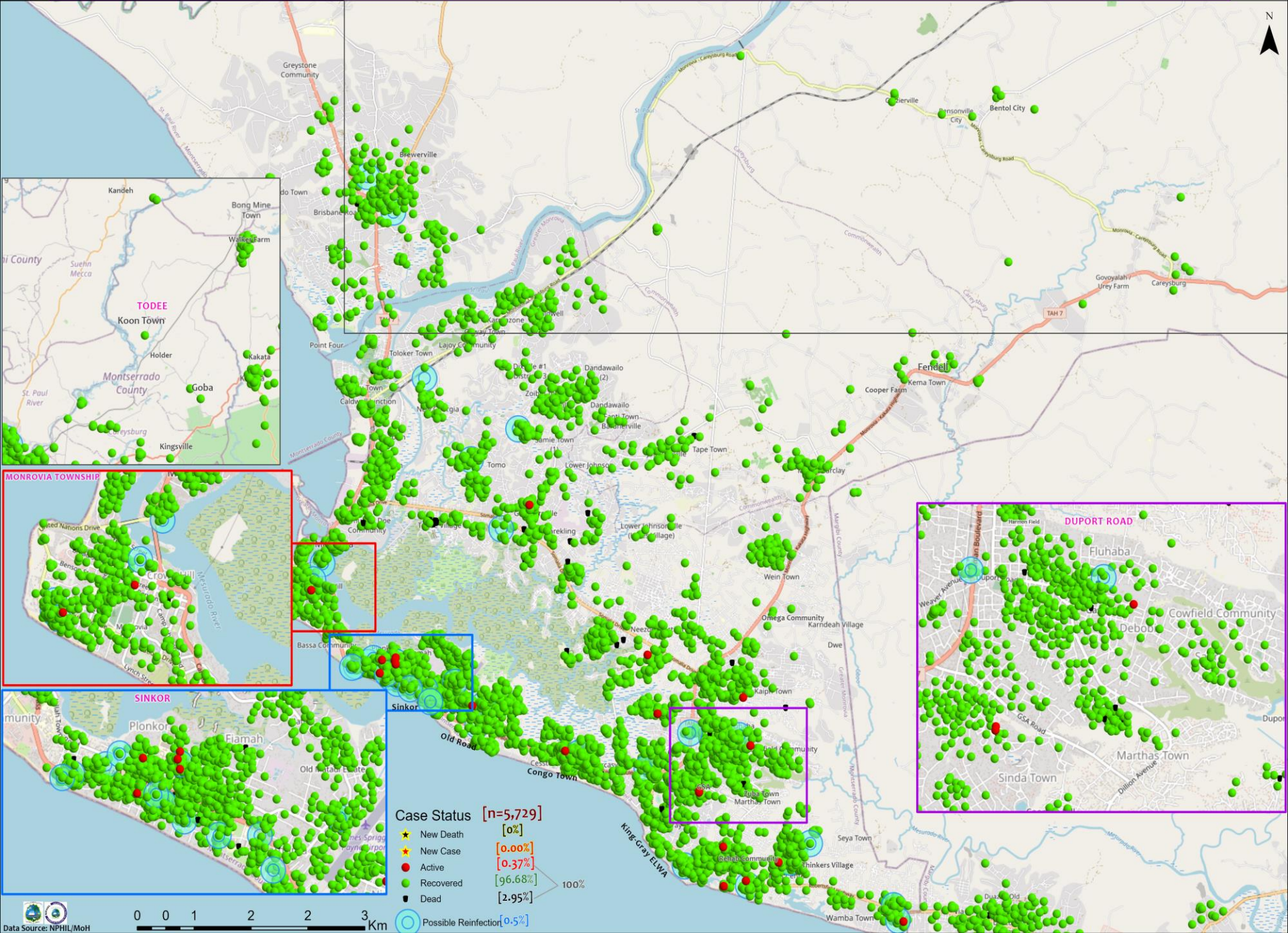
- Active [0.30%]
- Recovered [95.74%]
- Dead [3.96%]

Cases / District

- 0
- 1-10
- 11-50
- 51-500
- 501-1000
- 1001-1500
- 1501-2000



Distribution of COVID-19 Cases in Montserratido Communities, Liberia April 10, 2022



Summary of confirmed, recovered, active, and dead cases by reporting counties, Liberia, 16 March 2020 – 10 April 2022

| County | Confirmed Cases | | Recovered Cases | | Active Cases | Dead Cases | |
|------------------|-----------------|-------------|-----------------|-------------|--------------|------------|------------|
| | New | Cum | New | Cum | | New | Cum |
| Bomi | 0 | 64 | 0 | 62 | 0 | 0 | 2 |
| Bong | 0 | 149 | 0 | 129 | 0 | 0 | 20 |
| Gbarpolu | 0 | 62 | 0 | 60 | 0 | 0 | 2 |
| Grand Bassa | 0 | 109 | 0 | 102 | 1 | 0 | 6 |
| Grand Cape Mount | 0 | 61 | 0 | 61 | 0 | 0 | 0 |
| Grand Gedeh | 0 | 63 | 0 | 63 | 0 | 0 | 0 |
| Grand Kru | 0 | 26 | 0 | 26 | 0 | 0 | 0 |
| Lofa | 0 | 165 | 0 | 130 | 0 | 0 | 35 |
| Margibi | 0 | 297 | 0 | 290 | 0 | 0 | 7 |
| Maryland | 0 | 359 | 0 | 345 | 0 | 0 | 14 |
| Montserrado | 0 | 5729 | 0 | 5539 | 21 | 0 | 169 |
| Nimba | 0 | 239 | 0 | 206 | 0 | 0 | 33 |
| Rivercess | 0 | 16 | 0 | 13 | 0 | 0 | 3 |
| River Gee | 0 | 69 | 0 | 68 | 0 | 0 | 1 |
| Sinoe | 0 | 13 | 0 | 11 | 0 | 0 | 2 |
| National | 0 | 7421 | 0 | 7105 | 22 | 0 | 294 |

Home-Base Care of COVID-19 – 10 April 2022

| County | New Admissions | Currently in Admissions | No. Followed-up (In-person/Phone) | Cumulative Admissions | New Recoveries | Cumulative Recoveries | Referrals to TU | Cumulative Referrals to TU | New Death | Cumulative Deaths |
|---------------|----------------|-------------------------|-----------------------------------|-----------------------|----------------|-----------------------|-----------------|----------------------------|-----------|-------------------|
| Montserrat | 0 | 0 | 0 | 2239 | 0 | 2210 | 0 | 29 | 0 | 0 |
| Nimba | 0 | 0 | 0 | 108 | 0 | 96 | | | | |
| Bong | | | | 0 | | | | | | |
| Maryland | 0 | 0 | | | | | | | | |
| Cape Mount | | | | | | | | | | |
| Lofa | | | | | | | | | | |
| Margibi | 0 | 0 | | 1 | 0 | 1 | | | | |
| Total: | 0 | 0 | 0 | 2348 | 0 | 2307 | 0 | 29 | 0 | 0 |

Laboratory Samples Evaluated – 10 April 2022

| County | Sample Evaluated | New Positive | Repeat Positive | Initial Negative | Repeat Test Negative | Pending Lab Result |
|-----------------------------------|------------------|--------------|-----------------|------------------|----------------------|--------------------|
| Bomi | 1 | 0 | 0 | 1 | 0 | 0 |
| Bong | 4 | 0 | 0 | 4 | 0 | 0 |
| Grand Bassa | 3 | 0 | 0 | 3 | 0 | 0 |
| Grand Cape Mount | 1 | 0 | 0 | 1 | 0 | 0 |
| Grand Kru | 1 | 0 | 0 | 1 | 0 | 0 |
| Margibi | 5 | 0 | 0 | 5 | 0 | 0 |
| Montserrado | 198 | 0 | 0 | 198 | 0 | 0 |
| Nimba | 6 | 0 | 0 | 6 | 0 | 0 |
| Total | 219 | 0 | 0 | 219 | 0 | 0 |
| Outgoing Travelers | 219 | 0 | 0 | 219 | 0 | 0 |
| Incoming Travelers (RDT)* | 239 | 0 | 0 | 239 | 0 | 0 |
| NRL | 127 | 0 | 0 | 127 | 0 | 0 |
| Union Testing Center (RDT) | 92 | 0 | 0 | 92 | 0 | 0 |

Summary of COVID-19 Contact Tracing in Response Counties

| County | New Contacts Line listed | Cumulative Contacts | No. of Health Care Workers as Contacts | Cumulative no. of Health Care Workers as contacts | Contacts became a case | Cumulative contacts that became a case | Contacts Completed 14 Days | Cumulative Contacts Completing 14 Days | Contacts Under Follow-up | Contacts lost to Follow-up |
|-------------------------|--------------------------|---------------------|--|---|------------------------|--|----------------------------|--|--------------------------|----------------------------|
| Montserratado | 0 | 10299 | 0 | 794 | 0 | 250 | 0 | 10299 | 0 | 0 |
| Margibi | 0 | 1895 | 0 | 135 | 0 | 44 | 0 | 1895 | 0 | 0 |
| Grand Bassa | 0 | 438 | 0 | 150 | 0 | 63 | 0 | 438 | 0 | 0 |
| Sinoe | 0 | 229 | 0 | 35 | 0 | 4 | 0 | 229 | 0 | 0 |
| Lofa | 0 | 758 | 0 | 103 | 0 | 34 | 0 | 758 | 0 | 0 |
| Nimba | 0 | 1171 | 0 | 149 | 0 | 25 | 0 | 1171 | 0 | 0 |
| Bong | 0 | 539 | 0 | 73 | 0 | 28 | 0 | 539 | 0 | 0 |
| Gbarpolu | 0 | 133 | 0 | 13 | 0 | 8 | 0 | 133 | 0 | 0 |
| Grand Cape Mount | 0 | 248 | 0 | 0 | 0 | 6 | 0 | 248 | 0 | 0 |
| RiverGee | 0 | 133 | 0 | 15 | 0 | 31 | 0 | 133 | 0 | 0 |
| Maryland | 0 | 793 | 0 | 86 | 0 | 24 | 0 | 793 | 0 | 0 |
| Bomi | 0 | 289 | 0 | 24 | 0 | 52 | 0 | 289 | 0 | 0 |
| Rivercess | 0 | 102 | 0 | 62 | 0 | 6 | 0 | 102 | 0 | 0 |
| Grand Kru | 0 | 333 | 0 | 131 | 0 | 17 | 0 | 333 | 0 | 0 |
| Grand Gedeh | 0 | 286 | 0 | 2 | 0 | 9 | 0 | 286 | 0 | 0 |
| National | 0 | 17646 | 0 | 1772 | 0 | 601 | 0 | 17646 | 0 | 0 |

Thank you for Listening