



# **Liberia COVID-19 Daily Sitrep 782 (May 6, 2022)**

# Summary of COVID-19 Cases by Reporting County, Liberia, 16 March 2020 – 6 May 2022

| County                  | Laboratory<br>Confirmed Cases | Confirmed Cases<br>on Contact List | Confirmed<br>Cumulative Cases |
|-------------------------|-------------------------------|------------------------------------|-------------------------------|
| <b>Bomi</b>             | 0                             | 0                                  | 64                            |
| <b>Bong</b>             | 0                             | 0                                  | 149                           |
| <b>Gbarpolu</b>         | 0                             | 0                                  | 62                            |
| <b>Grand Bassa</b>      | 0                             | 0                                  | 109                           |
| <b>Grand Cape Mount</b> | 0                             | 0                                  | 61                            |
| <b>Grand Kru</b>        | 0                             | 0                                  | 26                            |
| <b>Grand Gedeh</b>      | 0                             | 0                                  | 63                            |
| <b>Lofa</b>             | 0                             | 0                                  | 165                           |
| <b>Margibi</b>          | 0                             | 0                                  | 297                           |
| <b>Maryland</b>         | 0                             | 0                                  | 359                           |
| <b>Montserrado</b>      | <b>0</b>                      | 0                                  | <b>5753</b>                   |
| <b>Nimba</b>            | 0                             | 0                                  | 239                           |
| <b>Rivercess</b>        | 0                             | 0                                  | 16                            |
| <b>River Gee</b>        | 0                             | 0                                  | 69                            |
| <b>Sinoe</b>            | 0                             | 0                                  | 13                            |
| <b>NATIONAL</b>         | <b>0</b>                      | <b>0</b>                           | <b>7445</b>                   |

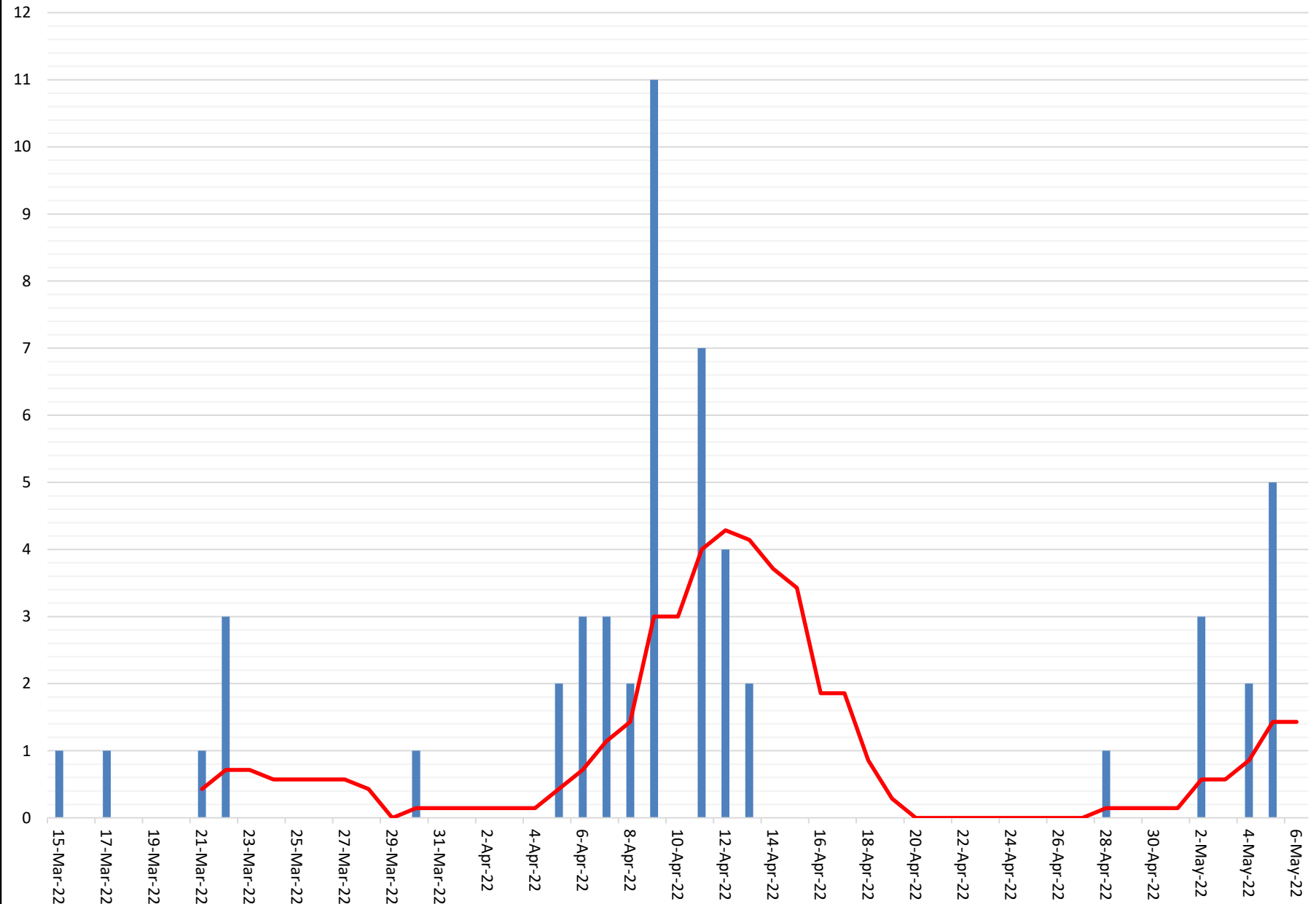
# Summary of COVID-19 Deaths by Reporting County, Liberia, 16 March 2020 – 6 May 2022

| County           | ew Suspected Deaths | COVID-19 Treatment Unit | Total in COVID-19 Treatment Unit | Health Facility | Total in Health Facility | Community | Total in Community | Confirmed Deaths on Contact List | Cumulative Deaths |
|------------------|---------------------|-------------------------|----------------------------------|-----------------|--------------------------|-----------|--------------------|----------------------------------|-------------------|
| Bomi             | 0                   | 0                       | 0                                | 0               | 2                        | 0         | 0                  | 0                                | 2                 |
| Bong             | 0                   | 0                       | 4                                | 0               | 13                       | 0         | 3                  | 0                                | 20                |
| Gbarpolu         | 0                   | 0                       | 0                                | 0               | 2                        | 0         | 0                  | 0                                | 2                 |
| Grand Bassa      | 0                   | 0                       | 0                                | 0               | 6                        | 0         | 0                  | 0                                | 6                 |
| Grand Cape Mount | 0                   | 0                       | 0                                | 0               | 0                        | 0         | 0                  | 0                                | 0                 |
| Grand Gedeh      | 0                   | 0                       | 0                                | 0               | 0                        | 0         | 0                  | 0                                | 0                 |
| Grand Kru        | 0                   | 0                       | 0                                | 0               | 0                        | 0         | 0                  | 0                                | 0                 |
| Lofa             | 0                   | 0                       | 3                                | 0               | 18                       | 0         | 14                 | 0                                | 35                |
| Maryland         | 0                   | 0                       | 4                                | 0               | 8                        | 0         | 2                  | 0                                | 14                |
| Margibi          | 0                   | 0                       | 2                                | 0               | 5                        | 0         | 0                  | 0                                | 7                 |
| Montserrado      | 0                   | 0                       | 46                               | 0               | 105                      | 0         | 18                 | 0                                | 169               |
| Nimba            | 0                   | 0                       | 8                                | 0               | 21                       | 0         | 4                  | 0                                | 33                |
| Rivercess        | 0                   | 0                       | 0                                | 0               | 2                        | 0         | 1                  | 0                                | 3                 |
| River Gee        | 0                   | 0                       | 1                                | 0               | 0                        | 0         | 0                  | 0                                | 1                 |
| Sinoe            | 0                   | 0                       | 0                                | 0               | 2                        | 0         | 0                  | 0                                | 2                 |
| <b>National</b>  | <b>0</b>            | <b>0</b>                | <b>68</b>                        | <b>0</b>        | <b>184</b>               | <b>0</b>  | <b>42</b>          | <b>0</b>                         | <b>294</b>        |

# Daily and Cumulative Healthcare Worker (HCW) COVID-19 Cases and Deaths by County, Liberia, 16 March 2020 – 6 May 2022

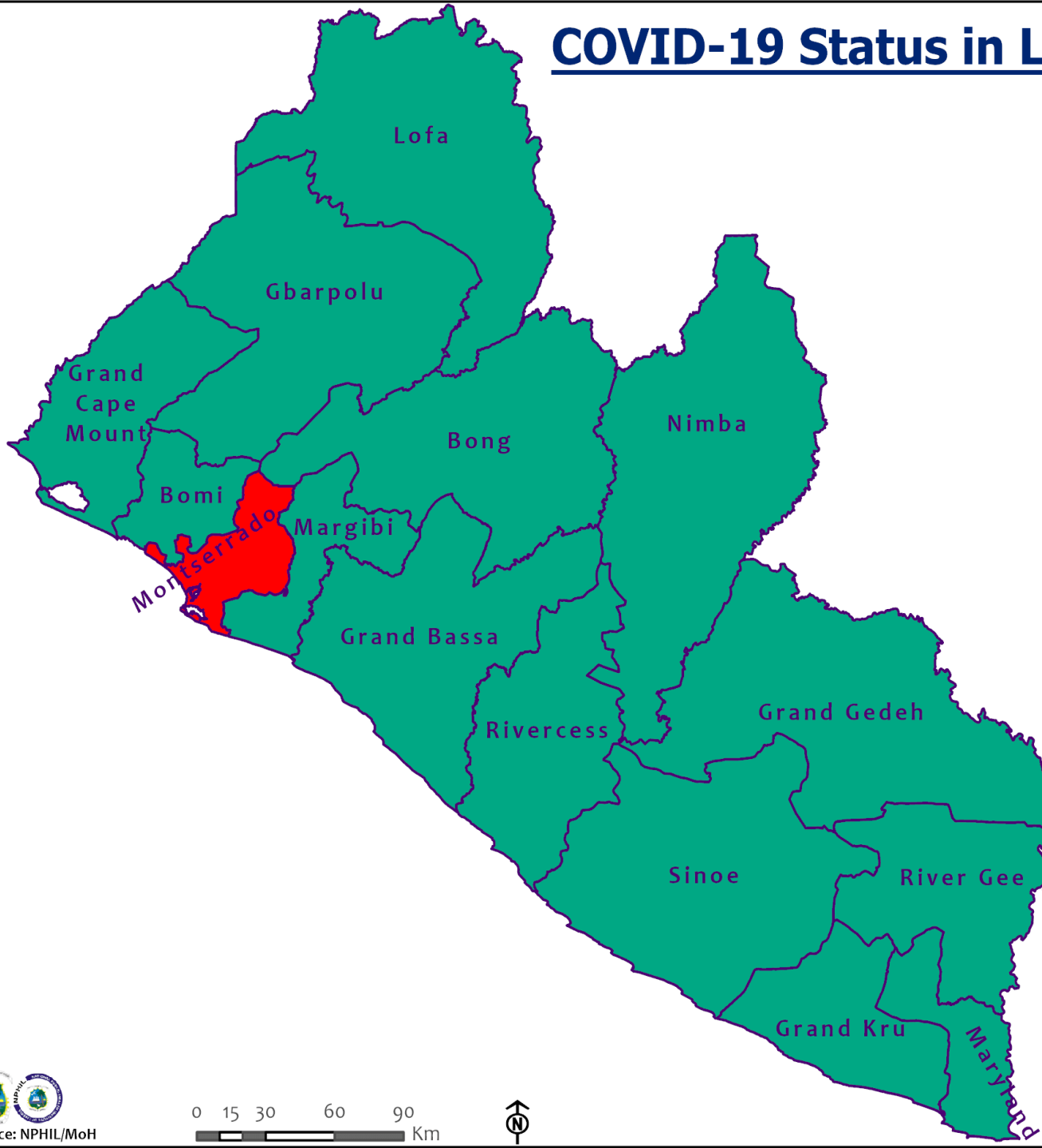
| County           | New Suspected & High Risk Cases (Alive) |           |          | New Suspect Death | Laboratory Confirmed Cases | Confirmed Cases on Contact List | CUMULATIVE CASES (ALIVE & DEAD) |          |
|------------------|---|-----------|----------|-------------------|----------------------------|---------------------------------|---------------------------------|----------|
|                  | Suspect                                 | High Risk | Total    |                   |                            |                                 | Confirmed                       | Deaths   |
| Bomi             | 0                                       | 0         | 0        | 0                 | 0                          | 0                               | 19                              | 0        |
| Bong             | 0                                       | 0         | 0        | 0                 | 0                          | 0                               | 30                              | 4        |
| Gbarpolu         | 0                                       | 0         | 0        | 0                 | 0                          | 0                               | 1                               | 1        |
| Grand Bassa      | 0                                       | 0         | 0        | 0                 | 0                          | 0                               | 26                              | 0        |
| Grand Gedeh      | 0                                       | 0         | 0        | 0                 | 0                          | 0                               | 2                               | 0        |
| Grand Kru        | 0                                       | 0         | 0        | 0                 | 0                          | 0                               | 14                              | 0        |
| Grand Cape Mount | 0                                       | 0         | 0        | 0                 | 0                          | 0                               | 0                               | 0        |
| Lofa             | 0                                       | 0         | 0        | 0                 | 0                          | 0                               | 30                              | 0        |
| Margibi          | 0                                       | 0         | 0        | 0                 | 0                          | 0                               | 22                              | 1        |
| Maryland         | 0                                       | 0         | 0        | 0                 | 0                          | 0                               | 39                              | 0        |
| Montserrado      | 0                                       | 0         | 0        | 0                 | 0                          | 0                               | 172                             | 2        |
| Nimba            | 0                                       | 0         | 0        | 0                 | 0                          | 0                               | 30                              | 0        |
| Rivercess        | 0                                       | 0         | 0        | 0                 | 0                          | 0                               | 6                               | 0        |
| River Gee        | 0                                       | 0         | 0        | 0                 | 0                          | 0                               | 10                              | 0        |
| Sinoe            | 0                                       | 0         | 0        | 0                 | 0                          | 0                               | 3                               | 0        |
| <b>NATIONAL</b>  | <b>0</b>                                | <b>0</b>  | <b>0</b> | <b>0</b>          | <b>0</b>                   | <b>0</b>                        | <b>404</b>                      | <b>8</b> |

# Covid-19 Daily Cases & 7 Days Moving Average



# COVID-19 Status in Liberia by County

May 6, 2022



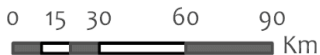
**Legend**

**County Status**

- Preparedness
- 14-Day Countdown
- Response

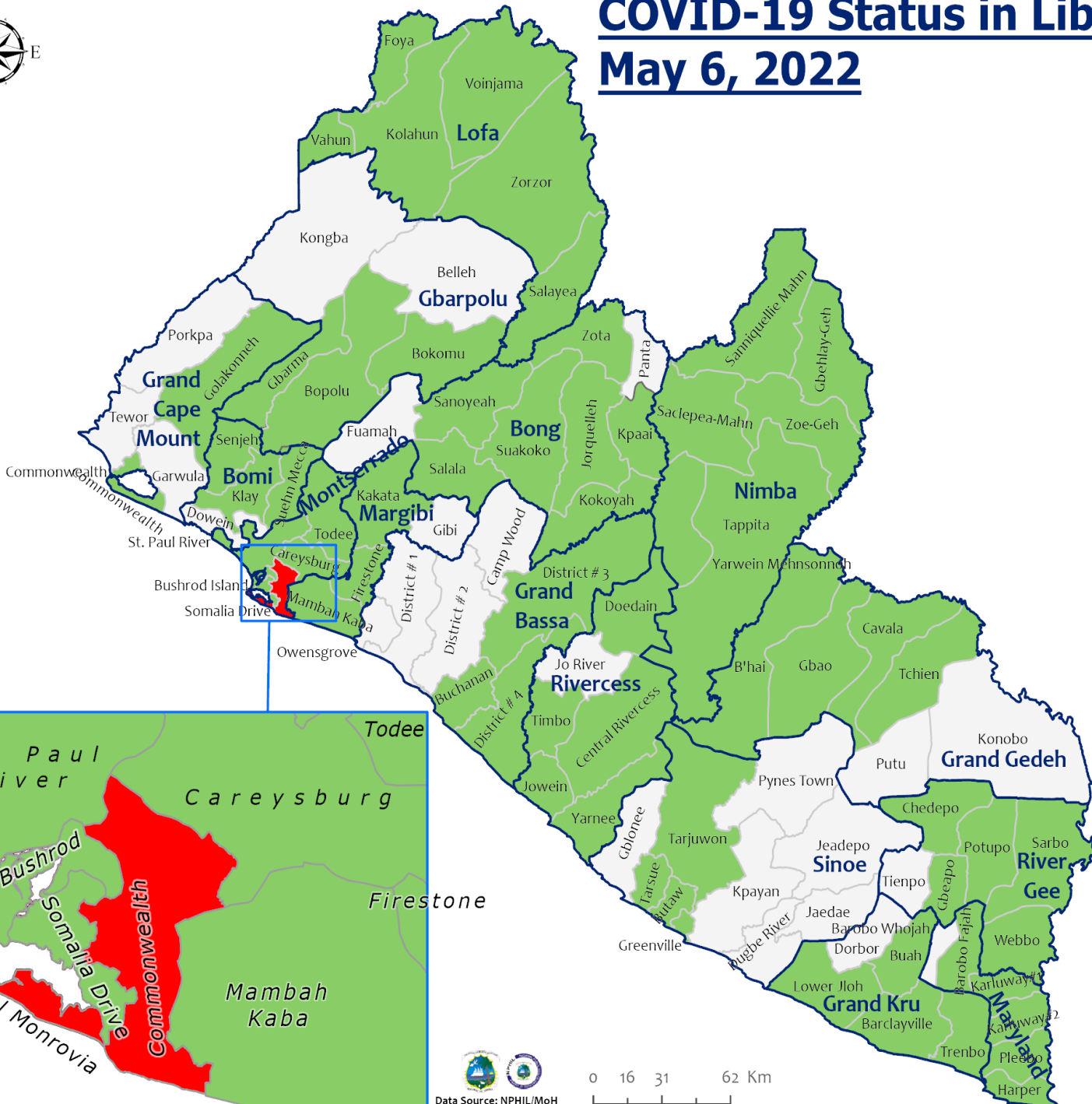


Data Source: NPHIL/MoH



# COVID-19 Status in Liberia by District

## May 6, 2022



**Total Cases: 7,445**

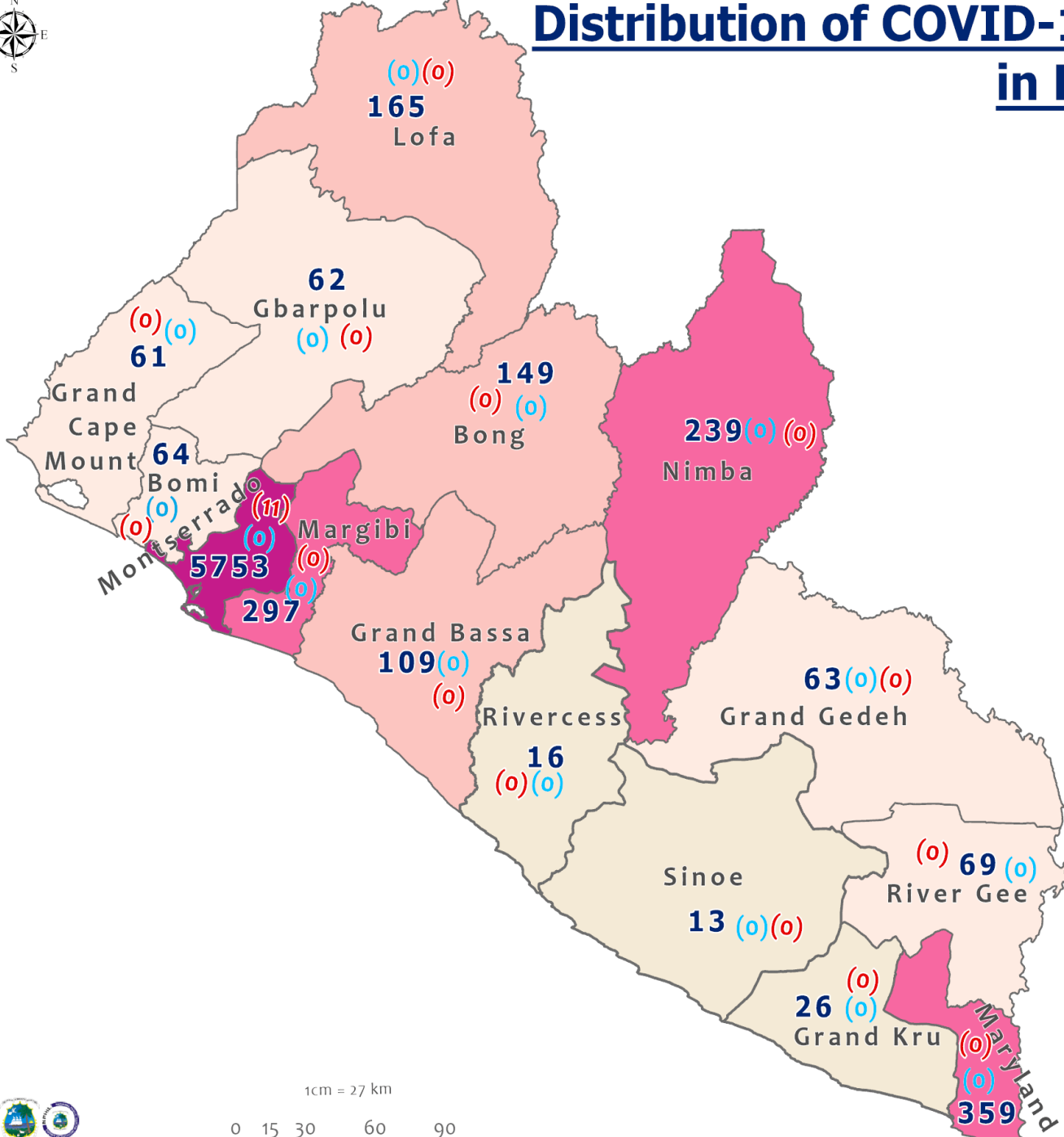
| Affected Counties | Cumulative Cases |
|-------------------|------------------|
| Montserrado       | 5,753            |
| Maryland          | 359              |
| Margibi           | 297              |
| Nimba             | 239              |
| Lofa              | 165              |
| Bong              | 149              |
| Grand Bassa       | 109              |
| River Gee         | 69               |
| Boni              | 64               |
| Grand Gedeh       | 63               |
| Gbarpolu          | 62               |
| Grand Cape        | 61               |
| Mount             | 61               |
| Grand Kru         | 26               |
| Rivercess         | 16               |
| Sinoe             | 13               |

### Legend

#### District Status

- Never had a case
- Back from recovery or first time with active case(s)
- With active cases(s)
- With recovered cases only

# Distribution of COVID-19 Cases by County in Liberia May 6, 2022



Total cumulative cases:

**7,445**

Total active cases:

**11**

Total new cases:

**0**

## Legend

Number of Cases

- 1 - 50
- 51 - 100
- 101 - 200
- 201 - 500
- 501 - 6000

Cumulative cases

Active cases

New cases

**0** (o) (o)

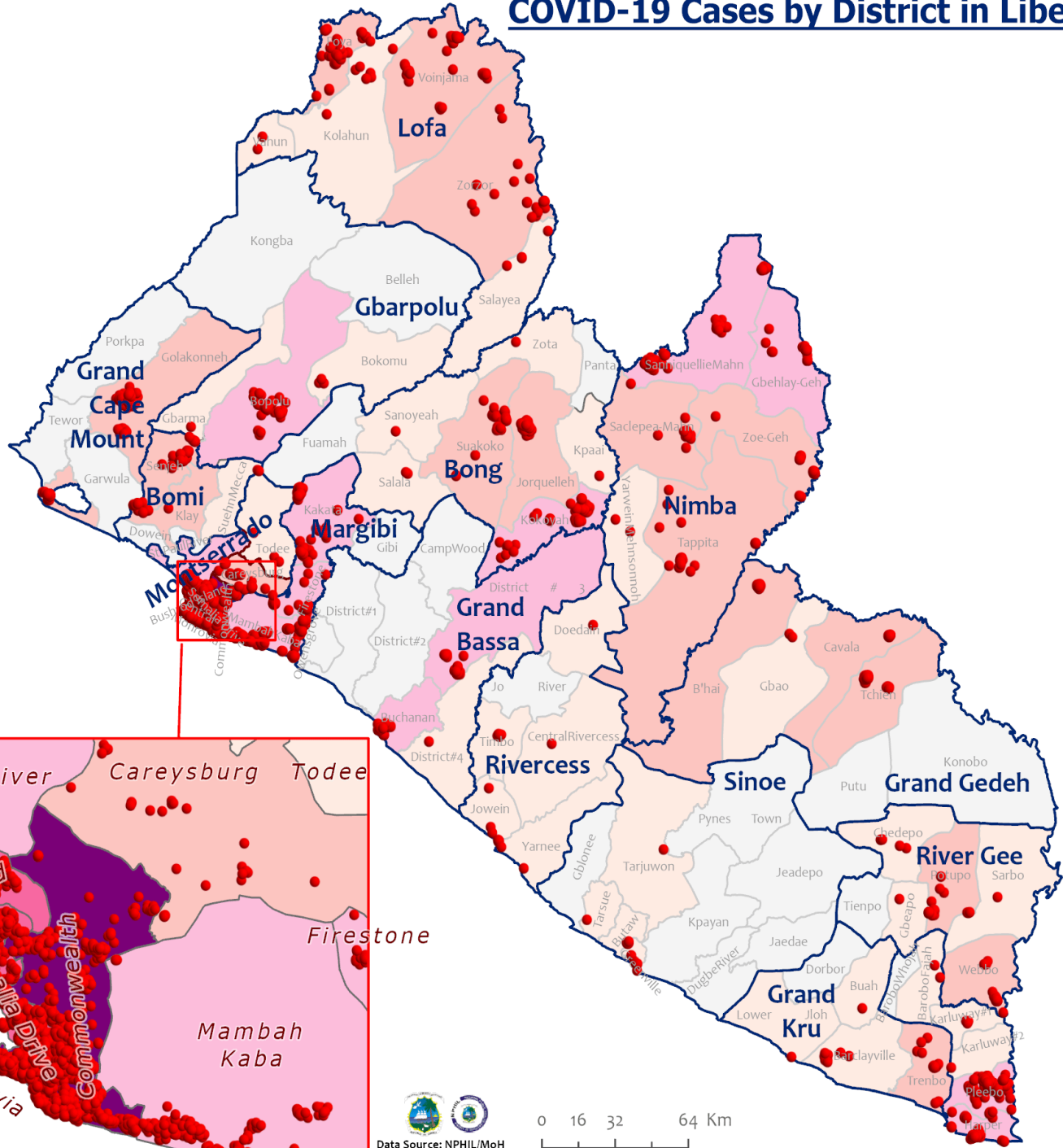
1cm = 27 km

0 15 30 60 90 Km





# COVID-19 Cases by District in Liberia - May 6, 2022



**Total Cases: 7,445**

| Affected Counties | Cumulative Cases |
|-------------------|------------------|
| Montserrado       | 5,753            |
| Maryland          | 359              |
| Margibi           | 297              |
| Nimba             | 239              |
| Lofa              | 165              |
| Bong              | 149              |
| Grand Bassa       | 109              |
| River Gee         | 69               |
| Bomi              | 64               |
| Grand Gedeh       | 63               |
| Gbarpolu          | 62               |
| Grand Cape Mount  | 61               |
| Grand Kru         | 26               |
| Rivercess         | 16               |
| Sinoe             | 13               |

**Legend**

**Case Status**

- ★ New confirmed case
- Confirmed cases

**Cases / District**

- 0
- 1-10
- 11-50
- 51-500
- 501-1000
- 1001-1500
- 1501-2000

# Percent Distribution of COVID-19 Cases by Status in Liberia - 6 May 2022



**Total Cases: 7,445**

| Affected Counties | Cumulative Cases |
|-------------------|------------------|
| Montserrat        | 5,753            |
| Maryland          | 359              |
| Margibi           | 297              |
| Nimba             | 239              |
| Lofa              | 165              |
| Bong              | 149              |
| Grand Bassa       | 109              |
| River Gee         | 69               |
| Bomi              | 64               |
| Grand Gedeh       | 63               |
| Gbarpolu          | 62               |
| Grand Cape        | 61               |
| Mount             | 61               |
| Grand Kru         | 26               |
| Rivercess         | 16               |
| Sinoe             | 13               |

## Legend

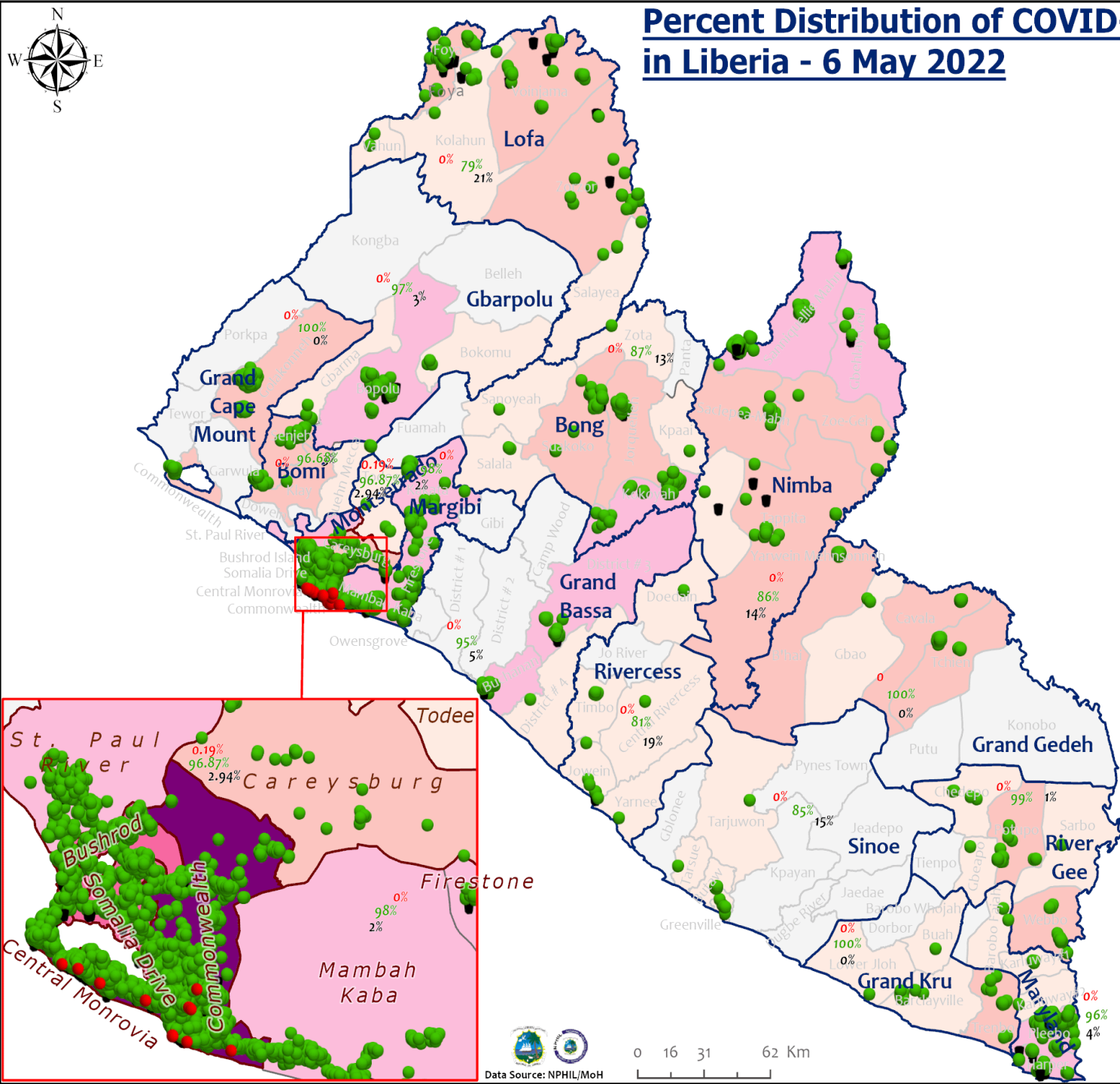
### Case Status

- Active
- Recovered
- Dead

[0.15%]  
[95.90%]  
[3.95%]

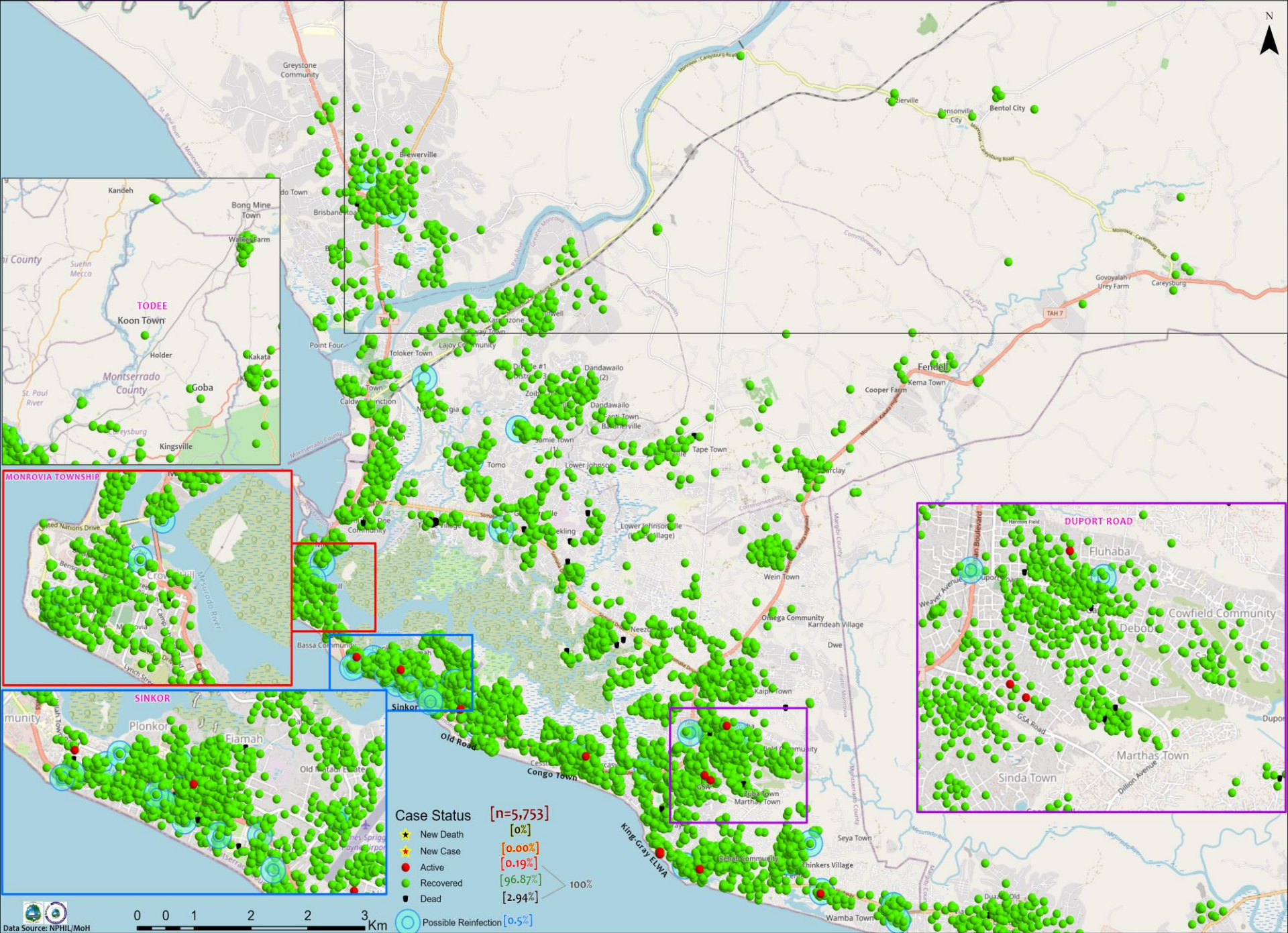
### Cases / District

- 0
- 1-10
- 11-50
- 51-500
- 501-1000
- 1001-1500
- 1501-2000





# Distribution of COVID-19 Cases in Montserrado Communities, Liberia May 6, 2022



**Case Status** [n=5,753]

|                        |          |
|------------------------|----------|
| ★ New Death            | [0%]     |
| ★ New Case             | [0.00%]  |
| ● Active               | [0.19%]  |
| ● Recovered            | [96.87%] |
| ■ Dead                 | [2.94%]  |
| ○ Possible Reinfection | [0.5%]   |

**Summary of confirmed, recovered, active, and dead cases by reporting counties, Liberia, 16 March 2020 – 6 May 2022**

| County           | Confirmed Cases |             | Recovered Cases |             | Active Cases | Dead Cases |            |
|------------------|-----------------|-------------|-----------------|-------------|--------------|------------|------------|
|                  | New             | Cum         | New             | Cum         |              | New        | Cum        |
| Bomi             | 0               | 64          | 0               | 62          | 0            | 0          | 2          |
| Bong             | 0               | 149         | 0               | 129         | 0            | 0          | 20         |
| Gbarpolu         | 0               | 62          | 0               | 60          | 0            | 0          | 2          |
| Grand Bassa      | 0               | 109         | 0               | 103         | 0            | 0          | 6          |
| Grand Cape Mount | 0               | 61          | 0               | 61          | 0            | 0          | 0          |
| Grand Gedeh      | 0               | 63          | 0               | 63          | 0            | 0          | 0          |
| Grand Kru        | 0               | 26          | 0               | 26          | 0            | 0          | 0          |
| Lofa             | 0               | 165         | 0               | 130         | 0            | 0          | 35         |
| Margibi          | 0               | 297         | 0               | 290         | 0            | 0          | 7          |
| Maryland         | 0               | 359         | 0               | 345         | 0            | 0          | 14         |
| Montserrado      | 0               | 5753        | 0               | 5573        | 11           | 0          | 169        |
| Nimba            | 0               | 239         | 0               | 206         | 0            | 0          | 33         |
| Rivercess        | 0               | 16          | 0               | 13          | 0            | 0          | 3          |
| River Gee        | 0               | 69          | 0               | 68          | 0            | 0          | 1          |
| Sinoe            | 0               | 13          | 0               | 11          | 0            | 0          | 2          |
| <b>National</b>  | <b>0</b>        | <b>7445</b> | <b>0</b>        | <b>7140</b> | <b>11</b>    | <b>0</b>   | <b>294</b> |



## Home-Base Care of COVID-19 – 6 May 2022

| County        | New Admissions | Currently in Admissions | No. Followed-up (In-person/Phone) | Cumulative Admissions | New Recoveries | Cumulative Recoveries | Referrals to TU | Cumulative Referrals to TU | New Death | Cumulative Deaths |
|---------------|----------------|-------------------------|-----------------------------------|-----------------------|----------------|-----------------------|-----------------|----------------------------|-----------|-------------------|
| Montserrat    | 0              | 0                       | 0                                 | 2239                  | 0              | 2210                  | 0               | 29                         | 0         | 0                 |
| Nimba         | 0              | 0                       | 0                                 | 108                   | 0              | 96                    |                 |                            |           |                   |
| Bong          |                |                         |                                   | 0                     |                |                       |                 |                            |           |                   |
| Maryland      | 0              | 0                       |                                   |                       |                |                       |                 |                            |           |                   |
| Cape Mount    |                |                         |                                   |                       |                |                       |                 |                            |           |                   |
| Lofa          |                |                         |                                   |                       |                |                       |                 |                            |           |                   |
| Margibi       | 0              | 0                       |                                   | 1                     | 0              | 1                     |                 |                            |           |                   |
| <b>Total:</b> | 0              | 0                       | 0                                 | 2348                  | 0              | 2307                  | 0               | 29                         | 0         | 0                 |

# Laboratory Samples Evaluated – 6 May 2022

| County                            | Sample Evaluated | New Positive | Repeat Positive | Initial Negative | Repeat Test Negative | Pending Lab Result |
|-----------------------------------|------------------|--------------|-----------------|------------------|----------------------|--------------------|
| Gbarpolu                          | 2                | 0            | 0               | 2                | 0                    | 0                  |
| Margibi                           | 1                | 0            | 0               | 1                | 0                    | 0                  |
| Montserrado                       | 98               | 0            | 0               | 98               | 0                    | 0                  |
| <b>Total</b>                      | <b>101</b>       | <b>0</b>     | <b>0</b>        | <b>101</b>       | <b>0</b>             | <b>0</b>           |
| <b>Outgoing Travelers</b>         | 101              | 0            | 0               | 101              | 0                    | 0                  |
| <b>Voluntary testing</b>          | 0                | <b>0</b>     | 0               | 0                | 0                    | 0                  |
| <b>NRL</b>                        | 77               | 0            | 0               | 77               | 0                    | 0                  |
| <b>Union Testing Center (RDT)</b> | 17               | 0            | 0               | 17               | 0                    | 0                  |
| <b>UN Clinic</b>                  | 7                | 0            | 0               | 7                | 0                    | 0                  |



# Summary of COVID-19 Contact Tracing in Response Counties

| County                  | New Contacts Line listed | Cumulative Contacts | No. of Health Care Workers as Contacts | Cumulative no. of Health Care Workers as contacts | Contacts became a case | Cumulative contacts that became a case | Contacts Completed 14 Days | Cumulative Contacts Completing 14 Days | Contacts Under Follow-up | Contacts lost to Follow-up |
|-------------------------|--------------------------|---------------------|--|---|------------------------|--|----------------------------|--|--------------------------|----------------------------|
| <b>Montserratado</b>    | 0                        | 10306               | 0                                      | 794   | 0                      | 250                                    | 0                          | 10306                                  | 0                        | 0                          |
| <b>Margibi</b>          | 0                        | 1895                | 0                                      | 135   | 0                      | 44                                     | 0                          | 1895                                   | 0                        | 0                          |
| <b>Grand Bassa</b>      | 0                        | 438                 | 0                                      | 150   | 0                      | 63                                     | 0                          | 438                                    | 0                        | 0                          |
| <b>Sinoe</b>            | 0                        | 229                 | 0                                      | 35  | 0                      | 4                                      | 0                          | 229                                    | 0                        | 0                          |
| <b>Lofa</b>             | 0                        | 758                 | 0                                      | 103   | 0                      | 34                                     | 0                          | 758                                    | 0                        | 0                          |
| <b>Nimba</b>            | 0                        | 1171                | 0                                      | 149   | 0                      | 25                                     | 0                          | 1171                                   | 0                        | 0                          |
| <b>Bong</b>             | 0                        | 539                 | 0                                      | 73  | 0                      | 28                                     | 0                          | 539                                    | 0                        | 0                          |
| <b>Gbarpolu</b>         | 0                        | 133                 | 0                                      | 13  | 0                      | 8                                      | 0                          | 133                                    | 0                        | 0                          |
| <b>Grand Cape Mount</b> | 0                        | 248                 | 0                                      | 0   | 0                      | 6                                      | 0                          | 248                                    | 0                        | 0                          |
| <b>RiverGee</b>         | 0                        | 133                 | 0                                      | 15  | 0                      | 31                                     | 0                          | 133                                    | 0                        | 0                          |
| <b>Maryland</b>         | 0                        | 793                 | 0                                      | 86  | 0                      | 24                                     | 0                          | 793                                    | 0                        | 0                          |
| <b>Bomi</b>             | 0                        | 289                 | 0                                      | 24  | 0                      | 52                                     | 0                          | 289                                    | 0                        | 0                          |
| <b>Rivercess</b>        | 0                        | 102                 | 0                                      | 62  | 0                      | 6                                      | 0                          | 102                                    | 0                        | 0                          |
| <b>Grand Kru</b>        | 0                        | 333                 | 0                                      | 131   | 0                      | 17                                     | 0                          | 333                                    | 0                        | 0                          |
| <b>Grand Gedeh</b>      | 0                        | 286                 | 0                                      | 2   | 0                      | 9                                      | 0                          | 286                                    | 0                        | 0                          |
| <b>National</b>         | <b>0</b>                 | <b>17653</b>        | <b>0</b>                               | <b>1772</b>                                       | <b>0</b>               | <b>601</b>                             | <b>0</b>                   | <b>17653</b>                           | <b>0</b>                 | <b>0</b>                   |



**Thank you for Listening**