



Liberia COVID-19 Daily Sitrep 783 (May 7, 2022)

Summary of COVID-19 Cases by Reporting County, Liberia, 16 March 2020 – 7 May 2022

County			Confirmed Cumulative Cases
	Laboratory Confirmed Cases	Confirmed Cases on Contact List	
Bomi	0	0	64
Bong	0	0	149
Gbarpolu	0	0	62
Grand Bassa	0	0	109
Grand Cape Mount	0	0	61
Grand Kru	0	0	26
Grand Gedeh	0	0	63
Lofa	0	0	165
Margibi	1	0	298
Maryland	0	0	359
Montserrado	4	0	5757
Nimba	1	0	240
Rivercess	0	0	16
River Gee	0	0	69
Sinoe	0	0	13
NATIONAL	6	0	7451

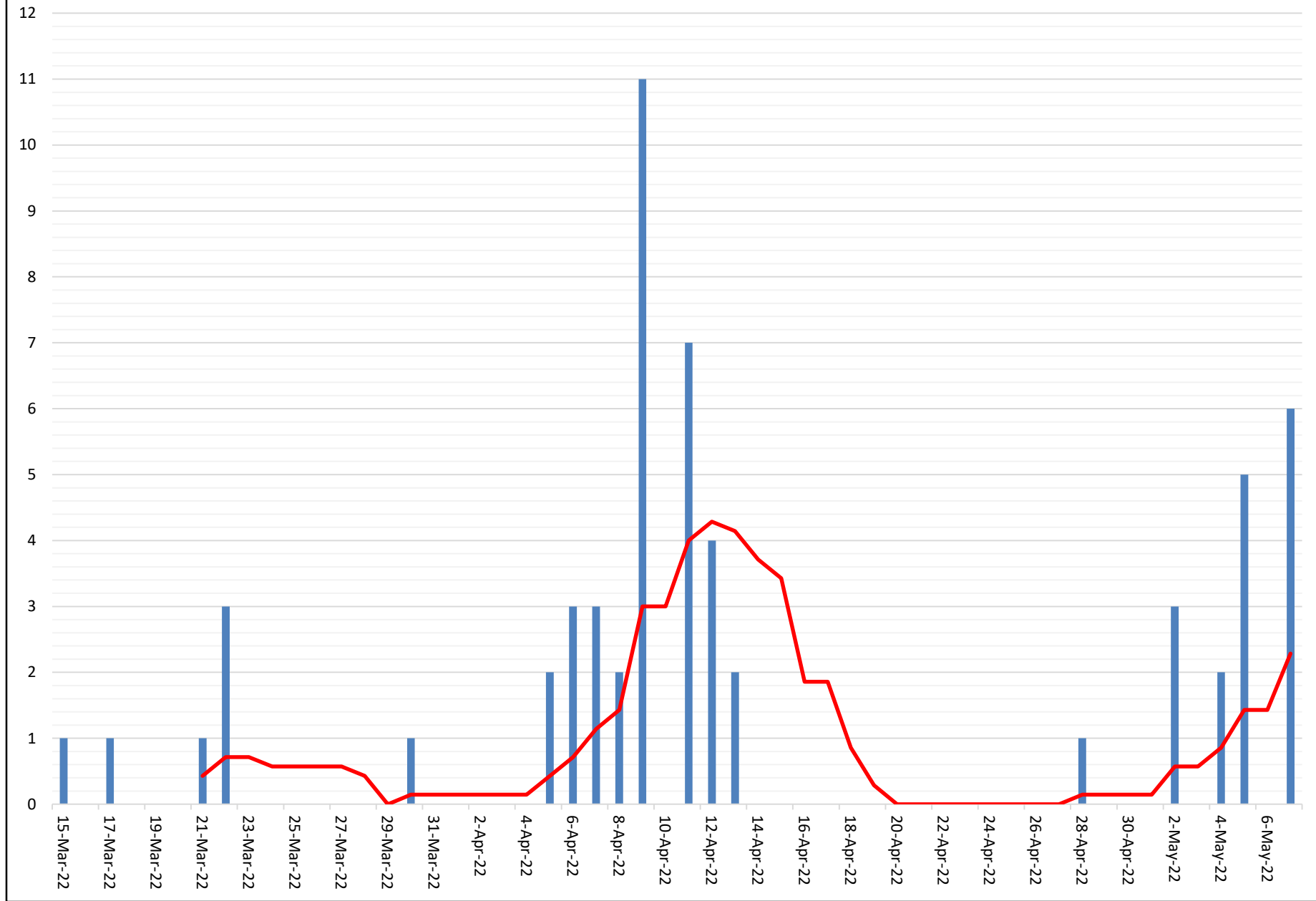
Summary of COVID-19 Deaths by Reporting County, Liberia, 16 March 2020 – 7 May 2022

County	new Suspected Deaths	COVID-19 Treatment Unit	Total in COVID-19 Treatment Unit	Health Facility	Total in Health Facility	Community	Total in Community	Confirmed Deaths on Contact List	Cumulative Deaths
Bomi	0	0	0	0	2	0	0	0	2
Bong	0	0	4	0	13	0	3	0	20
Gbarpolu	0	0	0	0	2	0	0	0	2
Grand Bassa	0	0	0	0	6	0	0	0	6
Grand Cape Mount	0	0	0	0	0	0	0	0	0
Grand Gedeh	0	0	0	0	0	0	0	0	0
Grand Kru	0	0	0	0	0	0	0	0	0
Lofa	0	0	3	0	18	0	14	0	35
Maryland	0	0	4	0	8	0	2	0	14
Margibi	0	0	2	0	5	0	0	0	7
Montserrado	0	0	46	0	105	0	18	0	169
Nimba	0	0	8	0	21	0	4	0	33
Rivercess	0	0	0	0	2	0	1	0	3
River Gee	0	0	1	0	0	0	0	0	1
Sinoe	0	0	0	0	2	0	0	0	2
National	0	0	68	0	184	0	42	0	294

Daily and Cumulative Healthcare Worker (HCW) COVID-19 Cases and Deaths by County, Liberia, 16 March 2020 – 7 May 2022

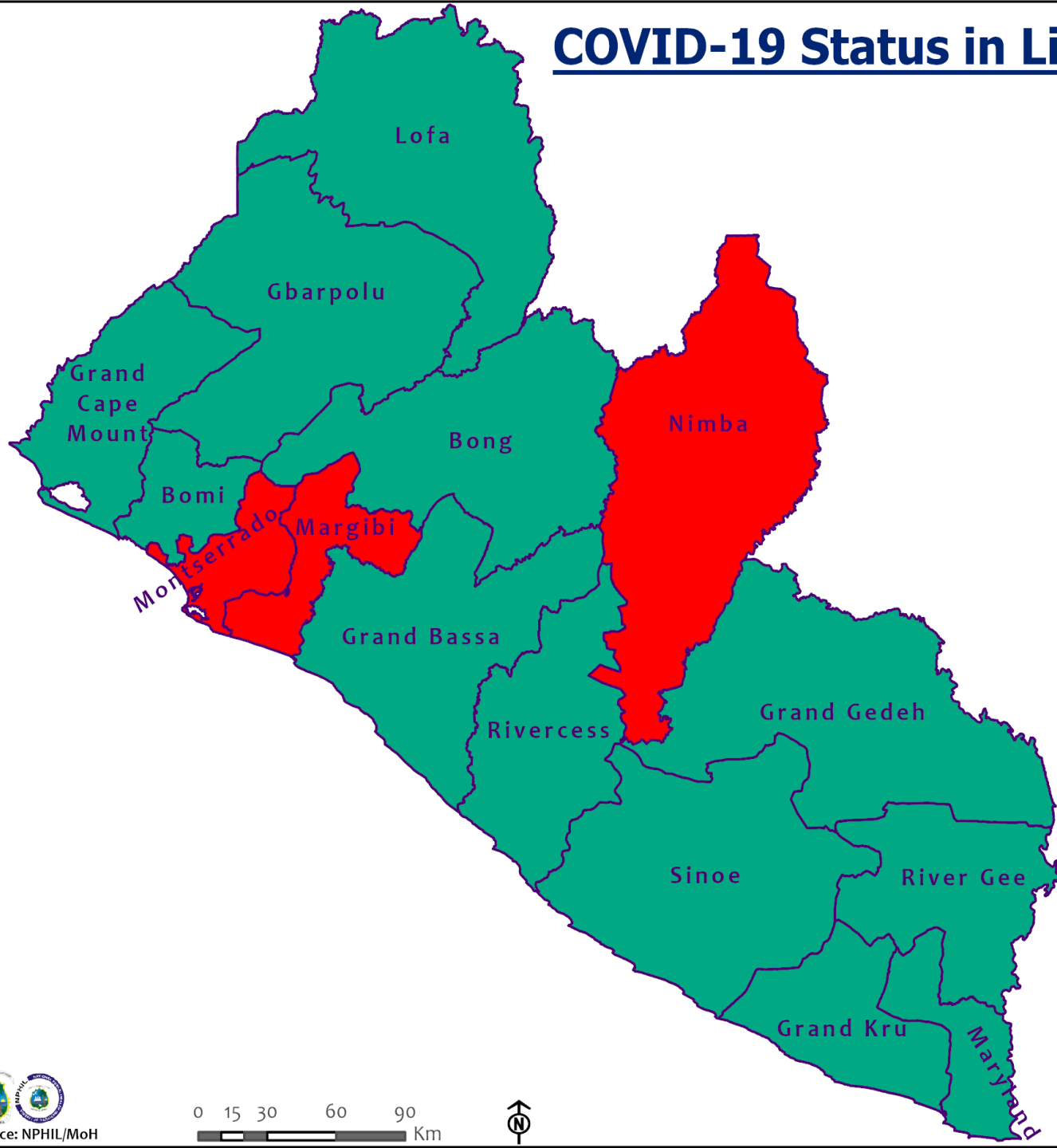
County	New Suspected & High Risk Cases (Alive)			New Suspect Death	Laboratory Confirmed Cases	Confirmed Cases on Contact List	CUMULATIVE CASES (ALIVE & DEAD)	
	Suspect	High Risk	Total				Confirmed	Deaths
Bomi	0	0	0	0	0	0	19	0
Bong	0	0	0	0	0	0	30	4
Gbarpolu	0	0	0	0	0	0	1	1
Grand Bassa	0	0	0	0	0	0	26	0
Grand Gedeh	0	0	0	0	0	0	2	0
Grand Kru	0	0	0	0	0	0	14	0
Grand Cape Mount	0	0	0	0	0	0	0	0
Lofa	0	0	0	0	0	0	30	0
Margibi	0	0	0	0	0	0	22	1
Maryland	0	0	0	0	0	0	39	0
Montserrado	0	0	0	0	0	0	172	2
Nimba	0	0	0	0	0	0	30	0
Rivercess	0	0	0	0	0	0	6	0
River Gee	0	0	0	0	0	0	10	0
Sinoe	0	0	0	0	0	0	3	0
NATIONAL	0	0	0	0	0	0	404	8

Covid-19 Daily Cases & 7 Days Moving Average



COVID-19 Status in Liberia by County

May 7, 2022



Legend

County Status

- Preparedness
- 14-Day Countdown
- Response





COVID-19 Status in Liberia by District

May 7, 2022

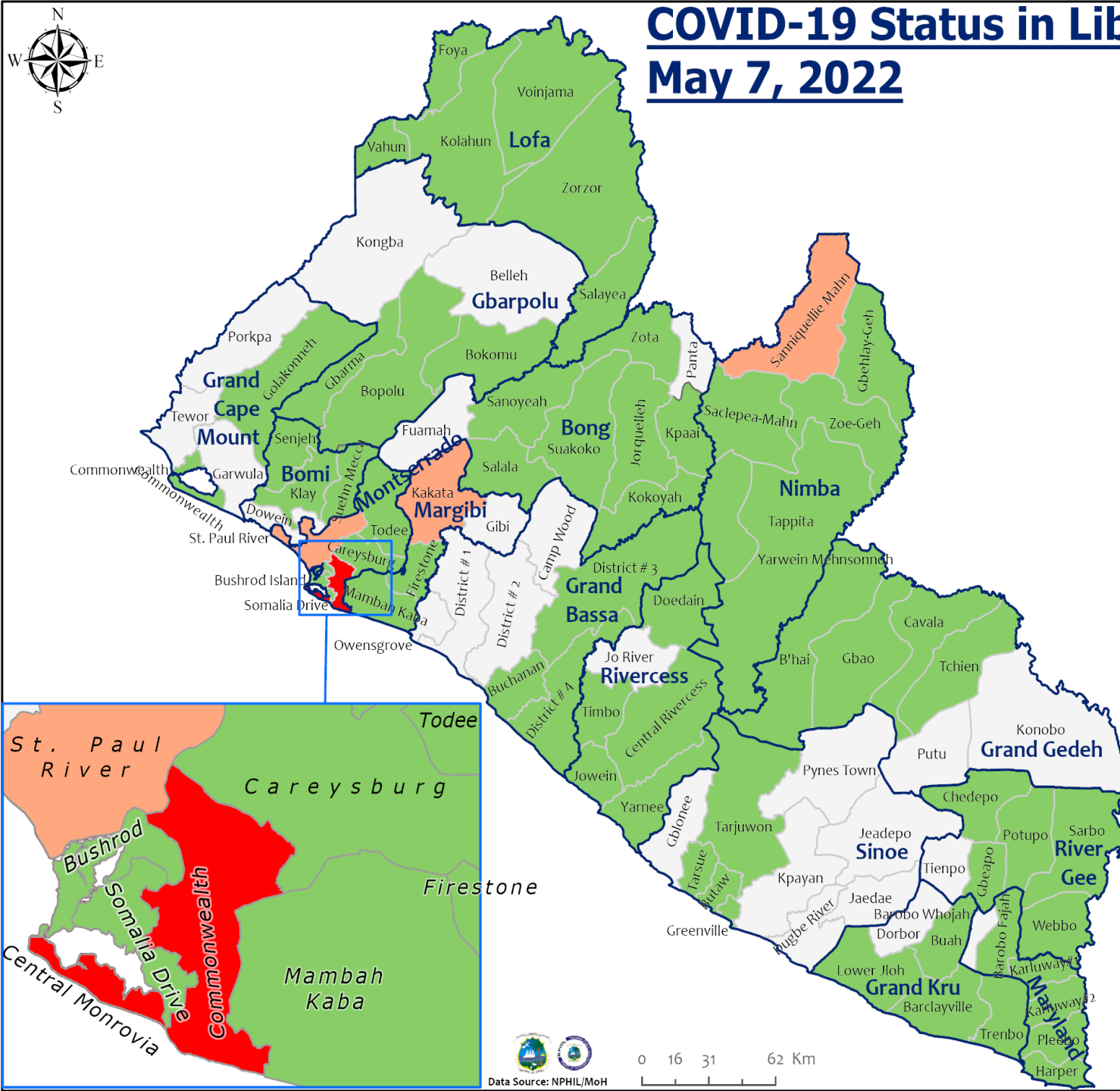
Total Cases: 7,451

Affected Counties	Cumulative Cases
Montserrado	5,757
Maryland	359
Margibi	298
Nimba	240
Lofa	165
Bong	149
Grand Bassa	109
River Gee	69
Bomi	64
Grand Gedeh	63
Gbarpolu	62
Grand Cape Mount	61
Grand Kru	26
Rivercess	16
Sinoe	13

Legend

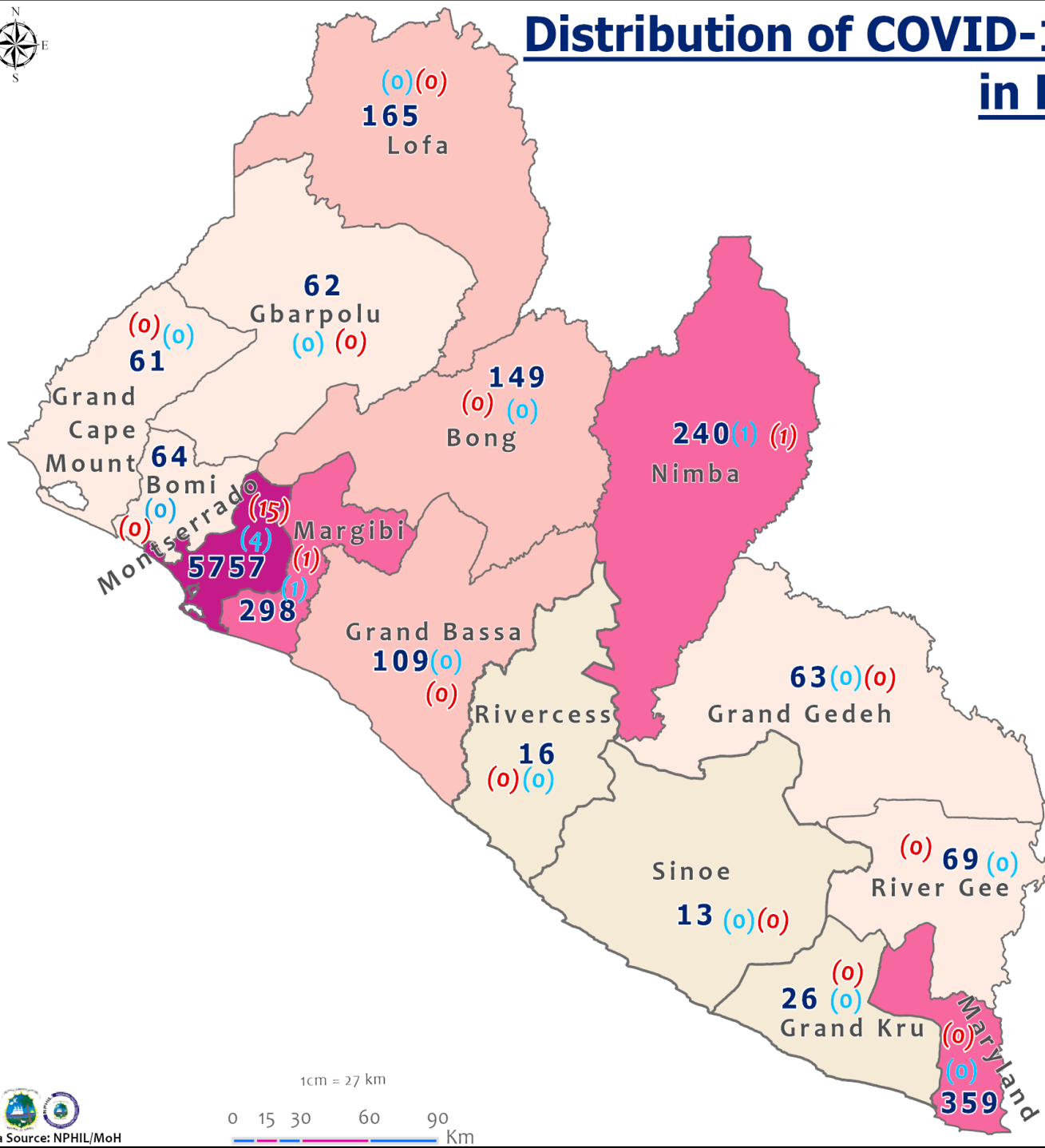
District Status

	Never had a case
	Back from recovery or first time with active case(s)
	With active cases(s)
	With recovered cases only





Distribution of COVID-19 Cases by County in Liberia May 7, 2022



Total cumulative cases:

7,451

Total active cases:

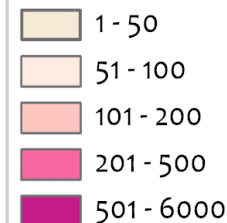
17

Total new cases:

6

Legend

Number of Cases



Cumulative cases

Active cases

New cases

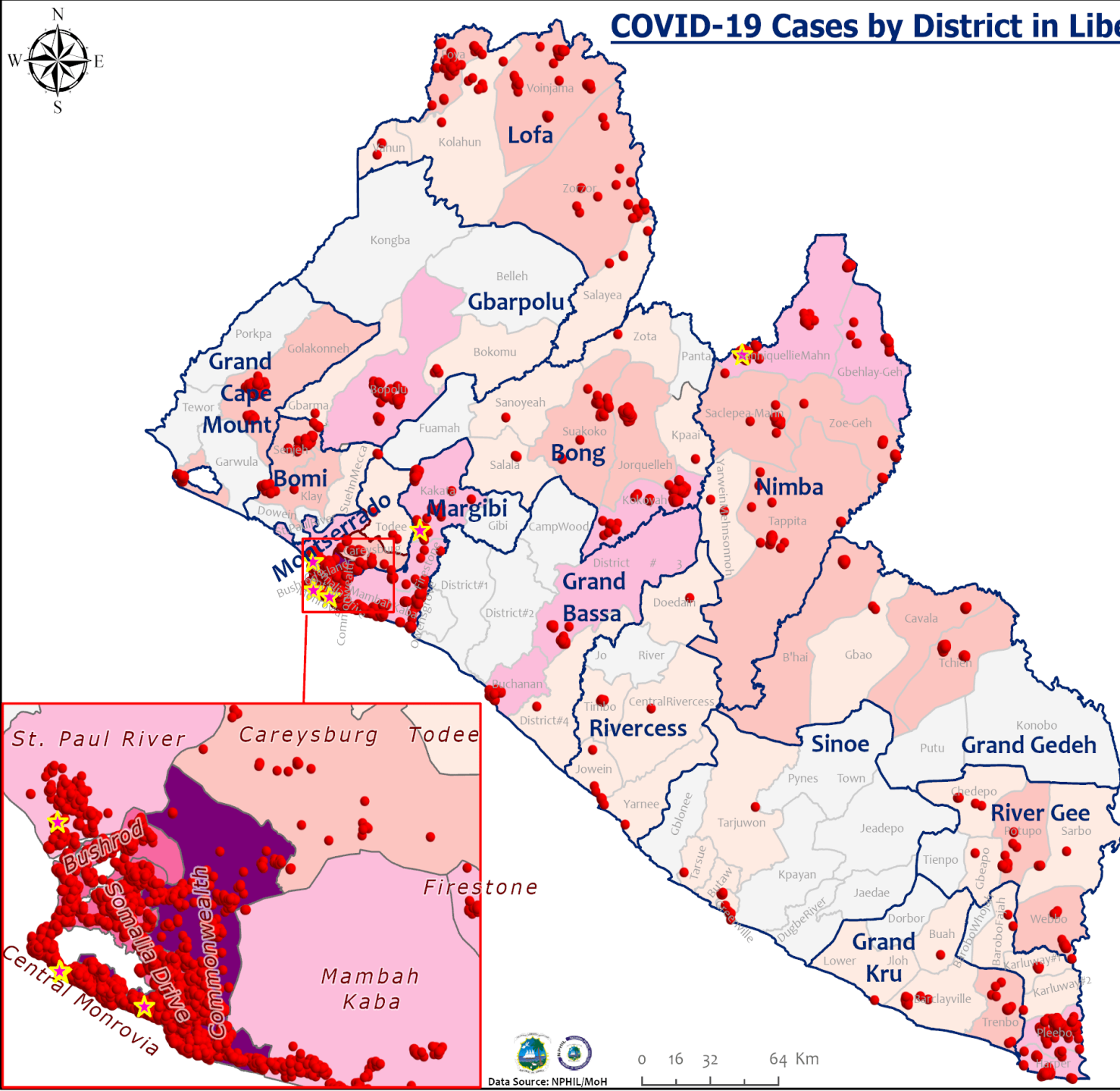
0 (0) (0)

1cm = 27 km

0 15 30 60 90 Km



COVID-19 Cases by District in Liberia - May 7, 2022



Total Cases: 7,451

Affected Counties	Cumulative Cases
Montserrado	5,757
Maryland	359
Margibi	298
Nimba	240
Lofa	165
Bong	149
Grand Bassa	109
River Gee	69
Bomi	64
Grand Gedeh	63
Gbarpolu	62
Grand Cape Mount	61
Grand Kru	26
Rivercess	16
Sinoe	13

Legend

Case Status

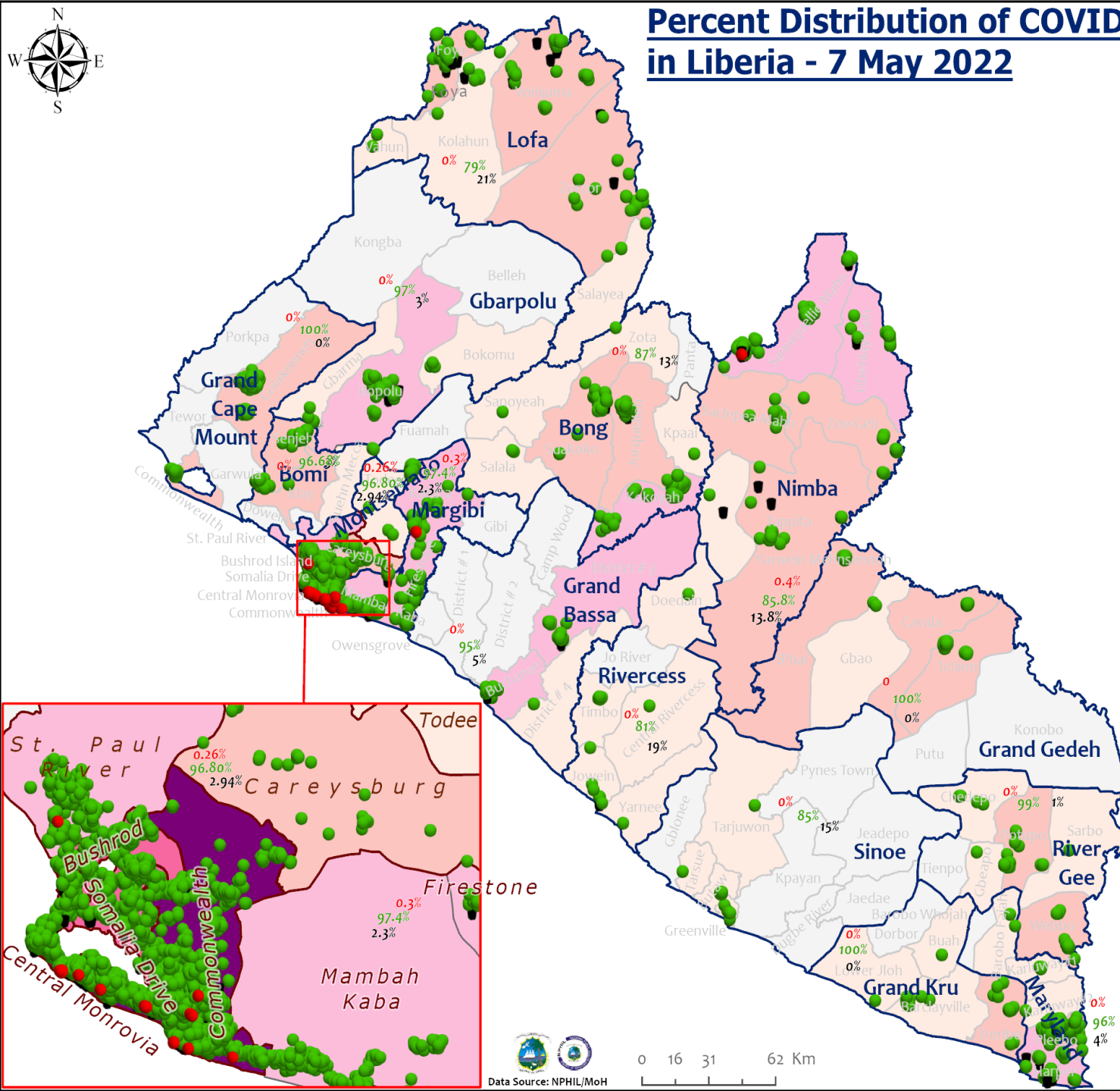
- ★ New confirmed case
- Confirmed cases

Cases / District

- 0
- 1-10
- 11-50
- 51-500
- 501-1000
- 1001-1500
- 1501-2000



Percent Distribution of COVID-19 Cases by Status in Liberia - 7 May 2022



Total Cases: 7,451

Affected Counties	Cumulative Cases
Montserrado	5,757
Maryland	359
Margibi	298
Nimba	240
Lofa	165
Bong	149
Grand Bassa	109
River Gee	69
Bomi	64
Grand Gedeh	63
Gbarpolu	62
Grand Cape	61
Mount	26
Grand Kru	16
Rivercess	16
Sinoe	13

Legend

Case Status

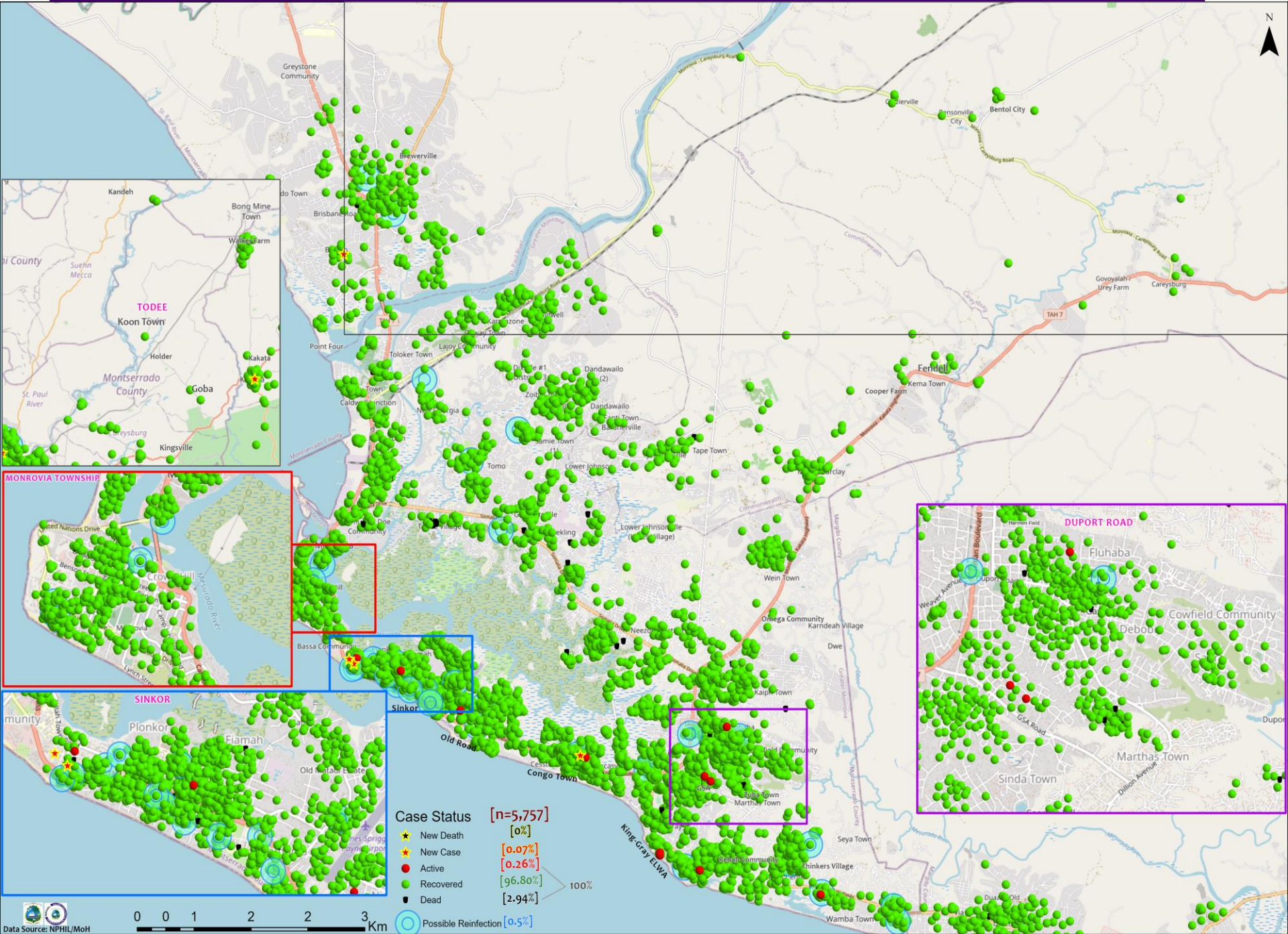
- Active
- Recovered
- Dead

Cases / District

- 0
- 1-10
- 11-50
- 51-500
- 501-1000
- 1001-1500
- 1501-2000

[0.23%]
[95.82%]
[3.95%]

Distribution of COVID-19 Cases in Montserrado Communities, Liberia May 7, 2022



Summary of confirmed, recovered, active, and dead cases by reporting counties, Liberia, 16 March 2020 – 7 May 2022

County	Confirmed Cases		Recovered Cases		Active Cases	Dead Cases	
	New	Cum	New	Cum		New	Cum
Bomi	0	64	0	62	0	0	2
Bong	0	149	0	129	0	0	20
Gbarpolu	0	62	0	60	0	0	2
Grand Bassa	0	109	0	103	0	0	6
Grand Cape Mount	0	61	0	61	0	0	0
Grand Gedeh	0	63	0	63	0	0	0
Grand Kru	0	26	0	26	0	0	0
Lofa	0	165	0	130	0	0	35
Margibi	1	298	0	290	1	0	7
Maryland	0	359	0	345	0	0	14
Montserrado	4	5757	0	5573	15	0	169
Nimba	1	240	0	206	1	0	33
Rivercess	0	16	0	13	0	0	3
River Gee	0	69	0	68	0	0	1
Sinoe	0	13	0	11	0	0	2
National	6	7451	0	7140	17	0	294

Treatment Units Daily Summary (25 November 2021 – 7 May 2022)

[illegible]

Home-Base Care of COVID-19 – 7 May 2022

County	New Admissions	Currently in Admissions	No. Followed-up (In-person/Phone)	Cumulative Admissions	New Recoveries	Cumulative Recoveries	Referrals to TU	Cumulative Referrals to TU	New Death	Cumulative Deaths
Montserrat	0	0	0	2239	0	2210	0	29	0	0
Nimba	0	0	0	108	0	96				
Bong				0						
Maryland	0	0								
Cape Mount										
Lofa										
Margibi	0	0		1	0	1				
Total:	0	0	0	2348	0	2307	0	29	0	0

Laboratory Samples Evaluated – 7 May 2022

County	Sample Evaluated	New Positive	Repeat Positive	Initial Negative	Repeat Test Negative	Pending Lab Result
Bomi	1	0	0	1	0	0
Bong	12	0	0	12	0	0
Grand Cape Mount	17	0	0	17	0	0
Grand Gedeh	1	0	0	1	0	0
Lofa	1	0	0	1	0	0
Margibi	10	1	0	9	0	0
Montserrado	212	4	0	208	0	0
Nimba	3	1	0	2	0	0
Total	258	6	0	252	0	0
Outgoing Travelers	257	5	0	252	0	0
Voluntary testing	1	1	0	0	0	0
NRL	109	6	0	103	0	0
Union Testing Center (RDT)	147	0	0	147	0	0
US Embassy Lab	2	0	0	2	0	0

Thank you for Listening