



# **Liberia COVID-19 Daily Sitrep 785 (May 9, 2022)**

# Summary of COVID-19 Cases by Reporting County, Liberia, 16 March 2020 – 9 May 2022

County	Laboratory Confirmed Cases	Confirmed Cases on Contact List	Confirmed Cumulative Cases
<b>Bomi</b>	0	0	64
<b>Bong</b>	0	0	149
<b>Gbarpolu</b>	0	0	62
<b>Grand Bassa</b>	0	0	109
<b>Grand Cape Mount</b>	0	0	61
<b>Grand Kru</b>	0	0	26
<b>Grand Gedeh</b>	0	0	63
<b>Lofa</b>	0	0	165
<b>Margibi</b>	0	0	298
<b>Maryland</b>	0	0	359
<b>Montserrado</b>	<b>0</b>	0	<b>5757</b>
<b>Nimba</b>	0	0	240
<b>Rivercess</b>	0	0	16
<b>River Gee</b>	0	0	69
<b>Sinoe</b>	0	0	13
<b>NATIONAL</b>	<b>0</b>	<b>0</b>	<b>7451</b>

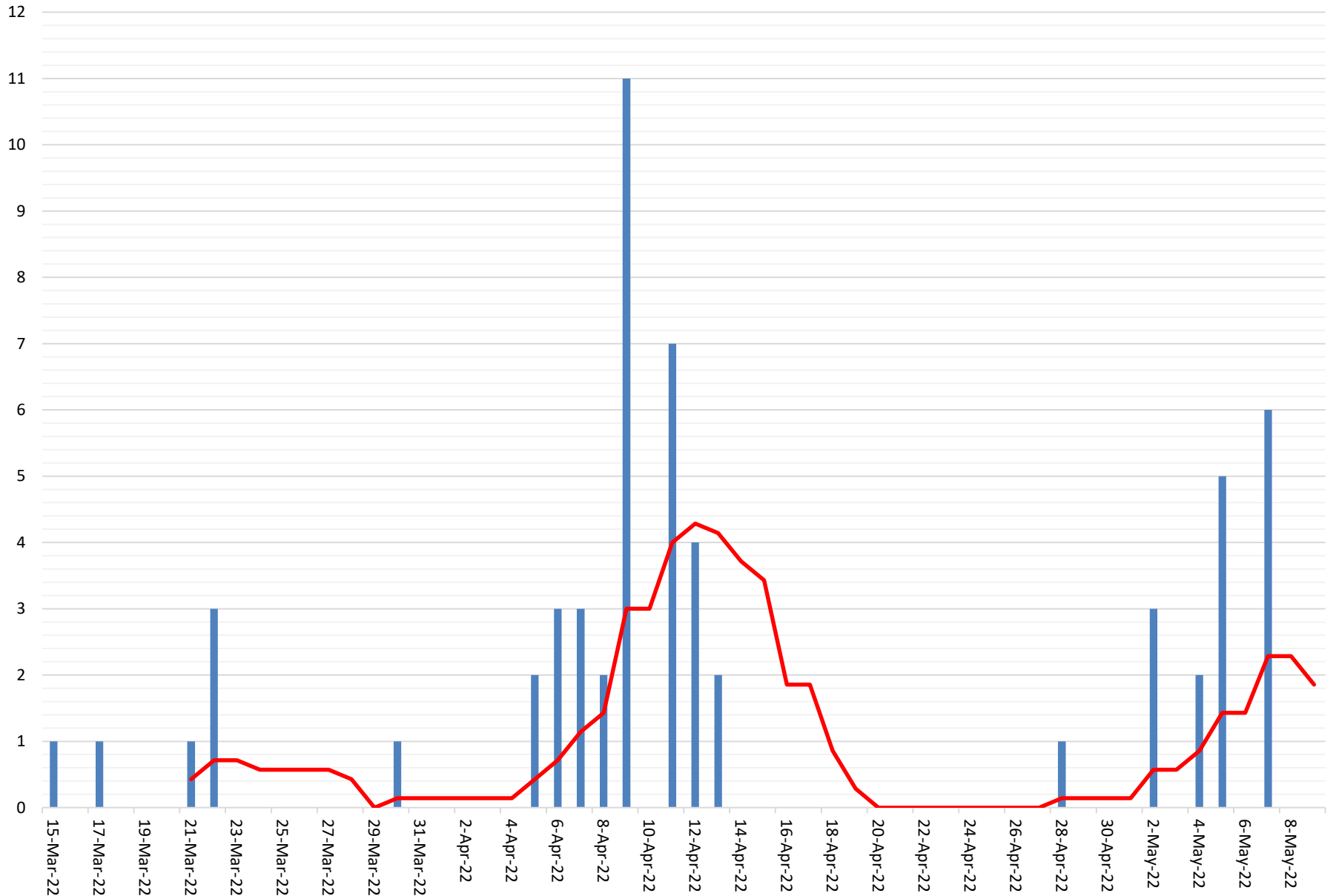
# Summary of COVID-19 Deaths by Reporting County, Liberia, 16 March 2020 – 9 May 2022

County	ew Suspected Deaths	COVID-19 Treatment Unit	Total in COVID-19 Treatment Unit	Health Facility	Total in Health Facility	Community	Total in Community	Confirmed Deaths on Contact List	Cumulative Deaths
Bomi	0	0	0	0	2	0	0	0	2
Bong	0	0	4	0	13	0	3	0	20
Gbarpolu	0	0	0	0	2	0	0	0	2
Grand Bassa	0	0	0	0	6	0	0	0	6
Grand Cape Mount	0	0	0	0	0	0	0	0	0
Grand Gedeh	0	0	0	0	0	0	0	0	0
Grand Kru	0	0	0	0	0	0	0	0	0
Lofa	0	0	3	0	18	0	14	0	35
Maryland	0	0	4	0	8	0	2	0	14
Margibi	0	0	2	0	5	0	0	0	7
Montserrado	0	0	46	0	105	0	18	0	169
Nimba	0	0	8	0	21	0	4	0	33
Rivercess	0	0	0	0	2	0	1	0	3
River Gee	0	0	1	0	0	0	0	0	1
Sinoe	0	0	0	0	2	0	0	0	2
<b>National</b>	<b>0</b>	<b>0</b>	<b>68</b>	<b>0</b>	<b>184</b>	<b>0</b>	<b>42</b>	<b>0</b>	<b>294</b>

# Daily and Cumulative Healthcare Worker (HCW) COVID-19 Cases and Deaths by County, Liberia, 16 March 2020 – 9 May 2022

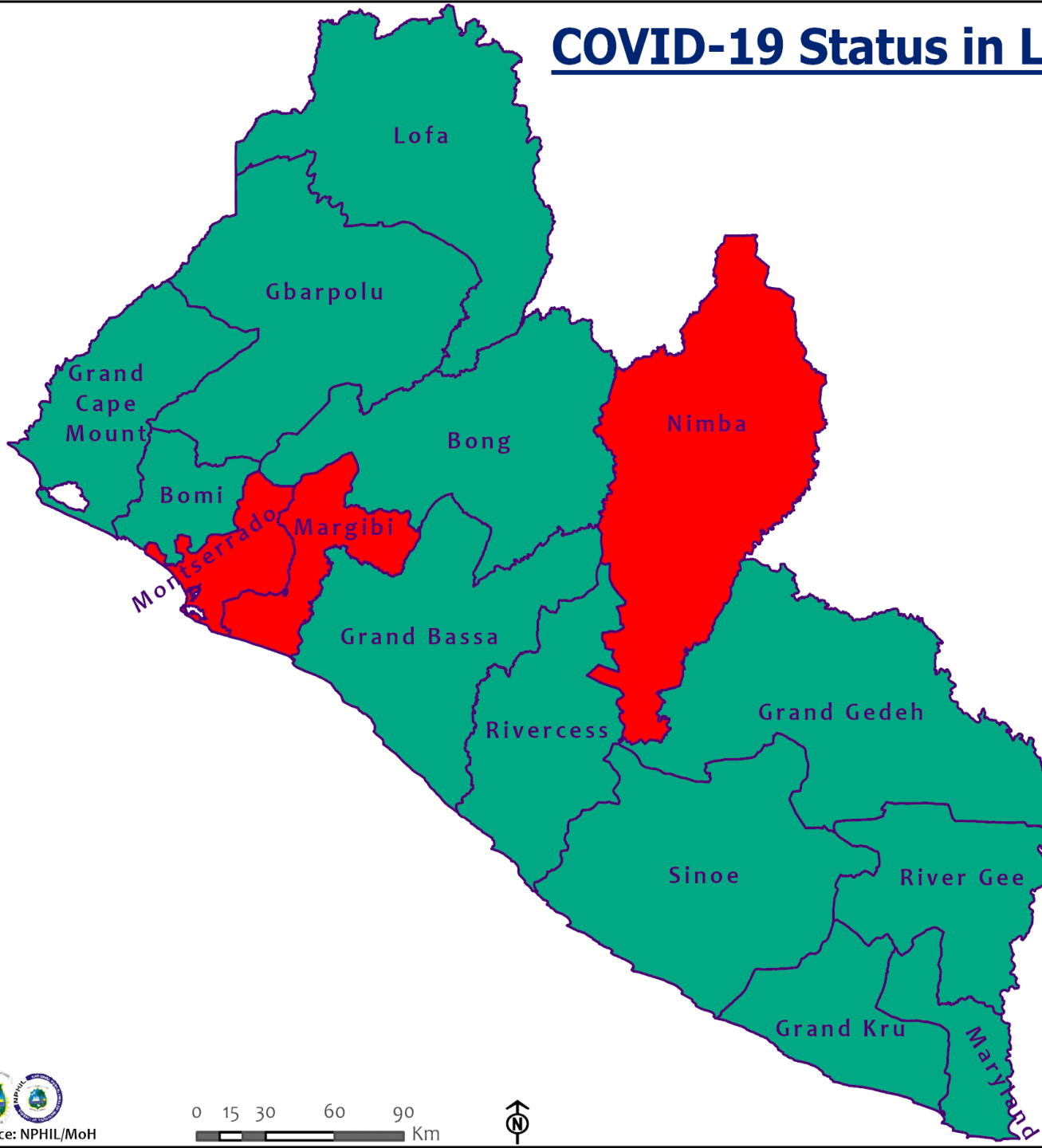
County	New Suspected & High Risk Cases (Alive)			New Suspect Death	Laboratory Confirmed Cases	Confirmed Cases on Contact List	CUMULATIVE CASES (ALIVE & DEAD)	
	Suspect	High Risk	Total				Confirmed	Deaths
Bomi	0	0	0	0	0	0	19	0
Bong	0	0	0	0	0	0	30	4
Gbarpolu	0	0	0	0	0	0	1	1
Grand Bassa	0	0	0	0	0	0	26	0
Grand Gedeh	0	0	0	0	0	0	2	0
Grand Kru	0	0	0	0	0	0	14	0
Grand Cape Mount	0	0	0	0	0	0	0	0
Lofa	0	0	0	0	0	0	30	0
Margibi	0	0	0	0	0	0	22	1
Maryland	0	0	0	0	0	0	39	0
Montserrado	0	0	0	0	0	0	172	2
Nimba	0	0	0	0	0	0	30	0
Rivercess	0	0	0	0	0	0	6	0
River Gee	0	0	0	0	0	0	10	0
Sinoe	0	0	0	0	0	0	3	0
<b>NATIONAL</b>	<b>0</b>	<b>0</b>	<b>0</b>	<b>0</b>	<b>0</b>	<b>0</b>	<b>404</b>	<b>8</b>

# Covid-19 Daily Cases & 7 Days Moving Average



# COVID-19 Status in Liberia by County

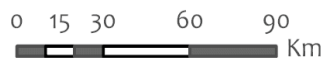
May 9, 2022



**Legend**

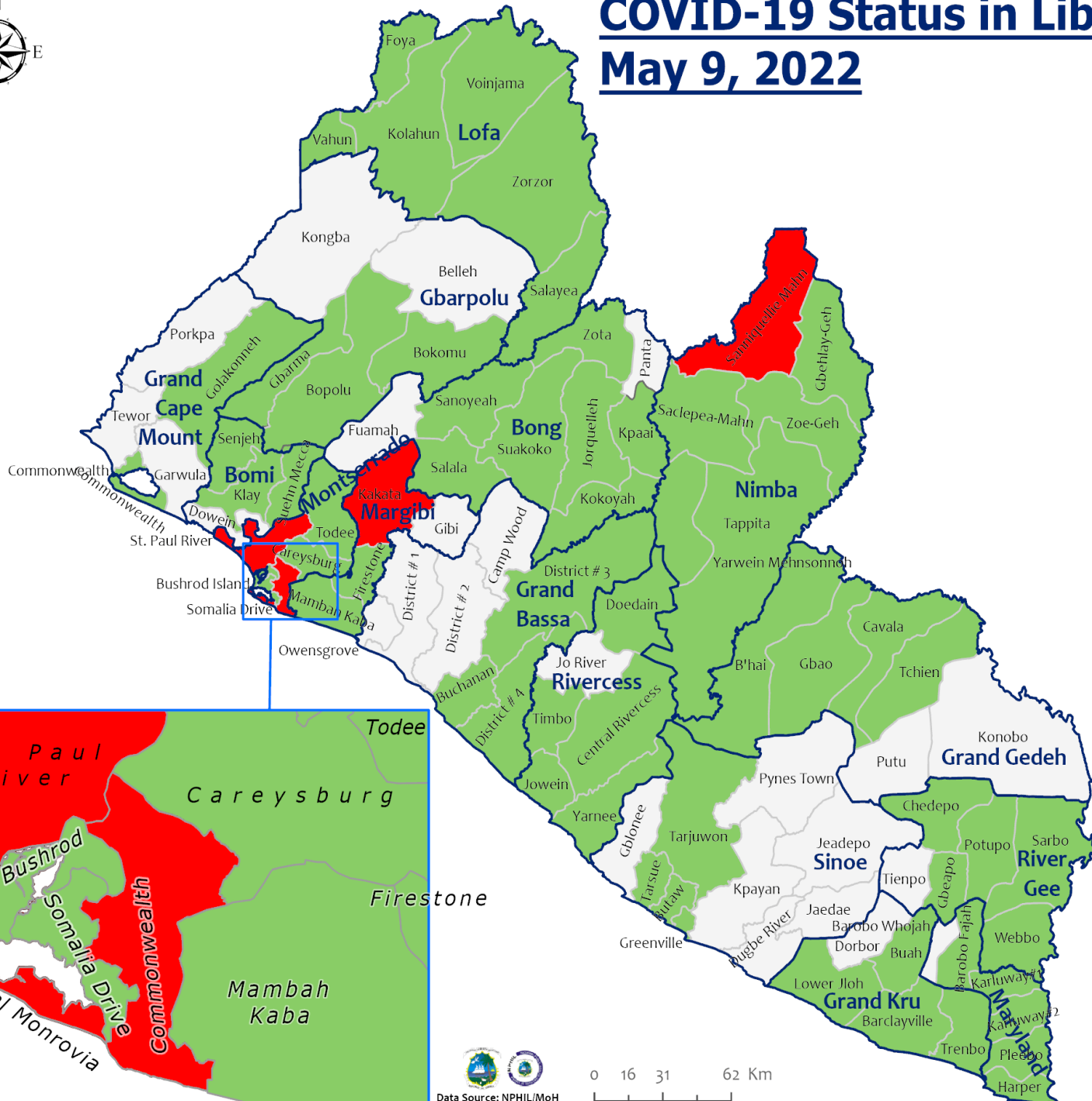
County Status

- Preparedness
- 14-Day Countdown
- Response



# COVID-19 Status in Liberia by District

## May 9, 2022



**Total Cases: 7,451**

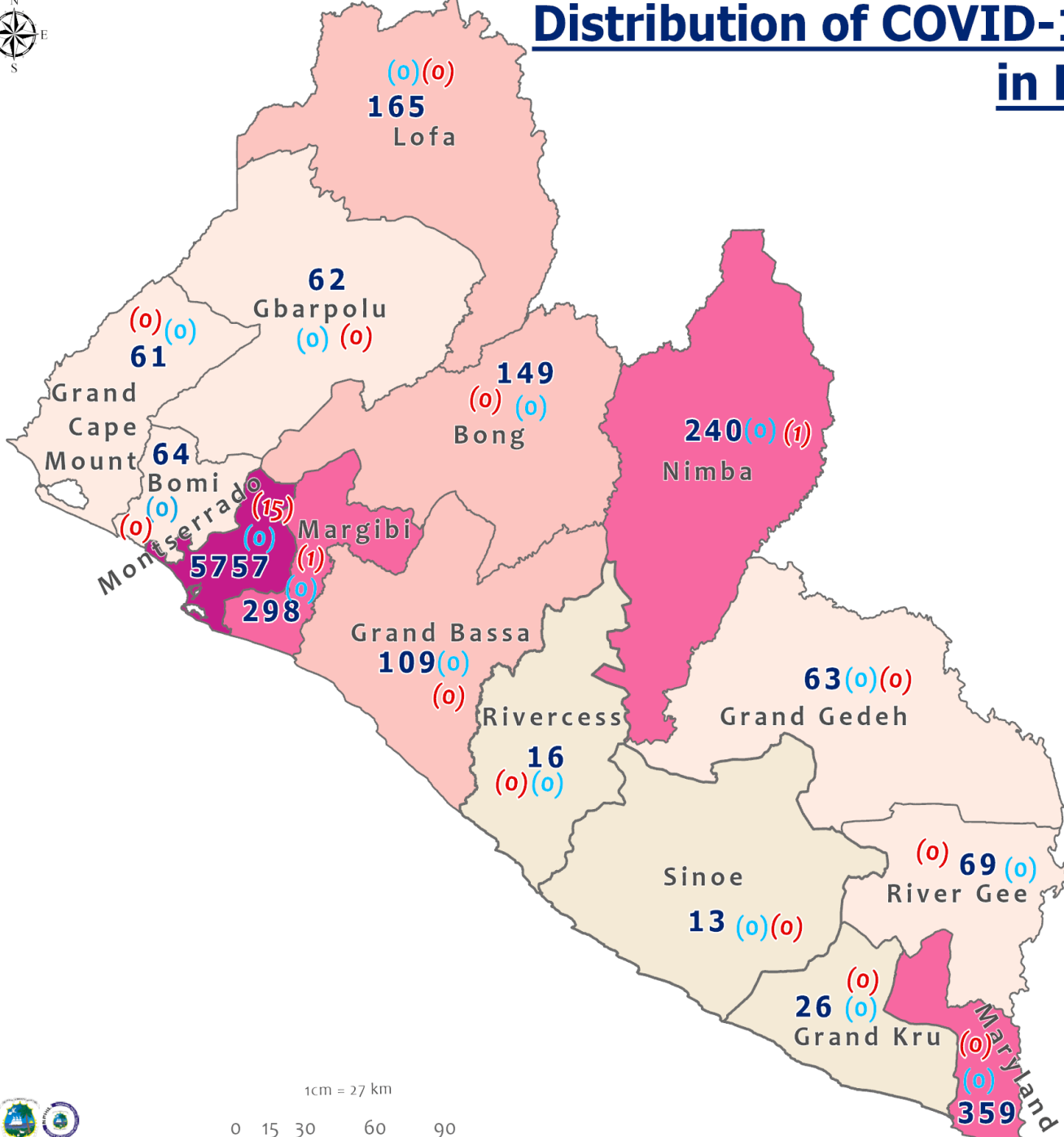
Affected Counties	Cumulative Cases
Montserrado	5,757
Maryland	359
Margibi	298
Nimba	240
Lofa	165
Bong	149
Grand Bassa	109
River Gee	69
Bomi	64
Grand Gedeh	63
Gbarpolu	62
Grand Cape Mount	61
Grand Kru	26
Rivercess	16
Sinoe	13

### Legend

#### District Status

- Never had a case
- Back from recovery or first time with active case(s)
- With active cases(s)
- With recovered cases only

# Distribution of COVID-19 Cases by County in Liberia May 9, 2022



Total cumulative cases:

**7,451**

Total active cases:

**17**

Total new cases:

**0**

## Legend

Number of Cases

- 1 - 50
- 51 - 100
- 101 - 200
- 201 - 500
- 501 - 6000

Cumulative cases

Active cases

New cases

**0** (0) (0)

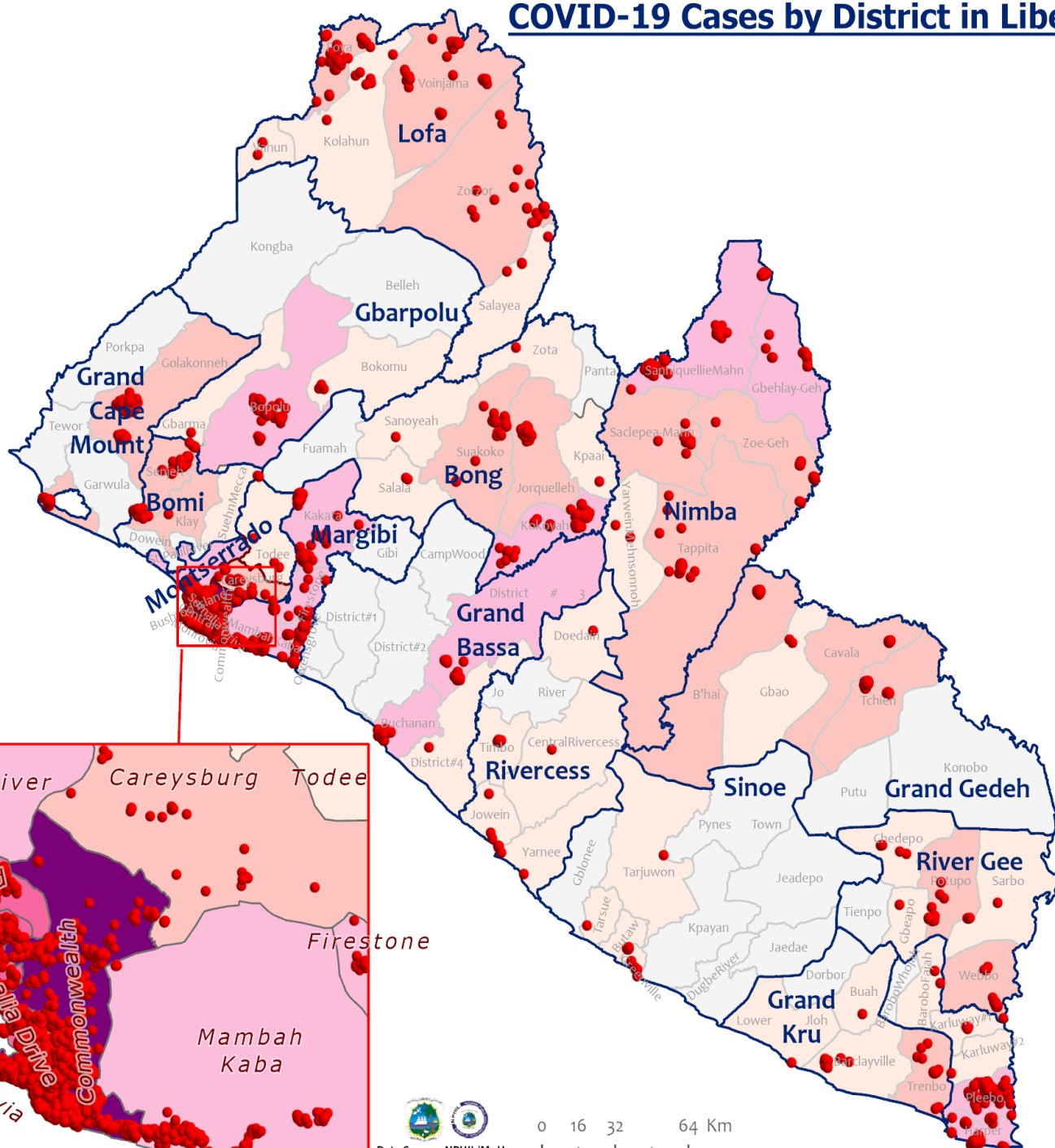
1cm = 27 km

0 15 30 60 90 Km





# COVID-19 Cases by District in Liberia - May 9, 2022



**Total Cases: 7,451**

Affected Counties	Cumulative Cases
Montserrado	5,757
Maryland	359
Margibi	298
Nimba	240
Lofa	165
Bong	149
Grand Bassa	109
River Gee	69
Bomi	64
Grand Gedeh	63
Gbarpolu	62
Grand Cape Mount	61
Grand Kru	26
Rivercess	16
Sinoe	13

## Legend

### Case Status

- ★ New confirmed case
- Confirmed cases

### Cases / District

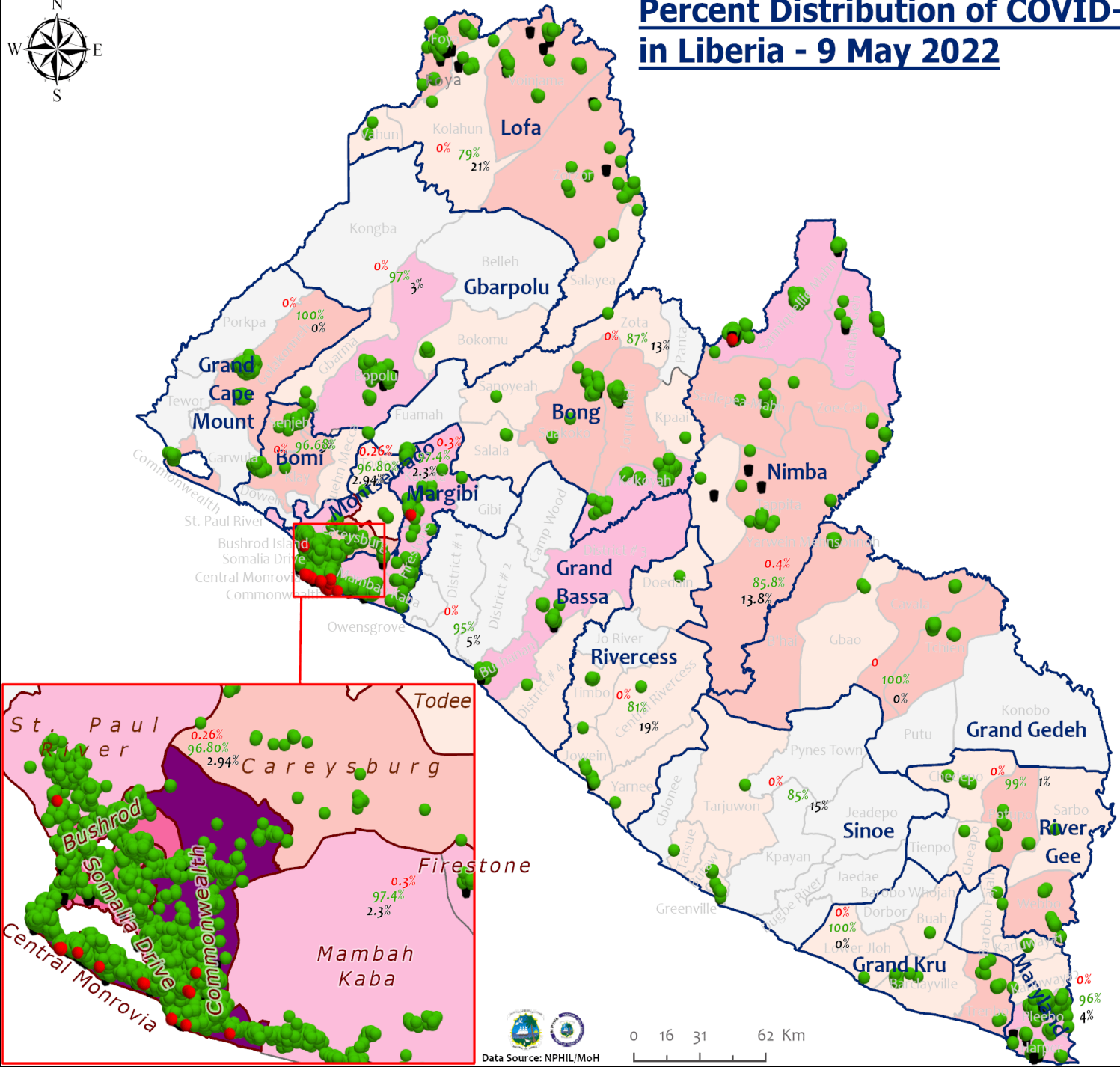
- 0
- 1-10
- 11-50
- 51-500
- 501-1000
- 1001-1500
- 1501-2000

# Percent Distribution of COVID-19 Cases by Status in Liberia - 9 May 2022



**Total Cases: 7,451**

Affected Counties	Cumulative Cases
Montserrado	5,757
Maryland	359
Margibi	298
Nimba	240
Lofa	165
Bong	149
Grand Bassa	109
River Gee	69
Boni	64
Grand Gedeh	63
Gbarpolu	62
Grand Cape	61
Mount	61
Grand Kru	26
Rivercess	16
Sinoe	13



### Legend

**Case Status**

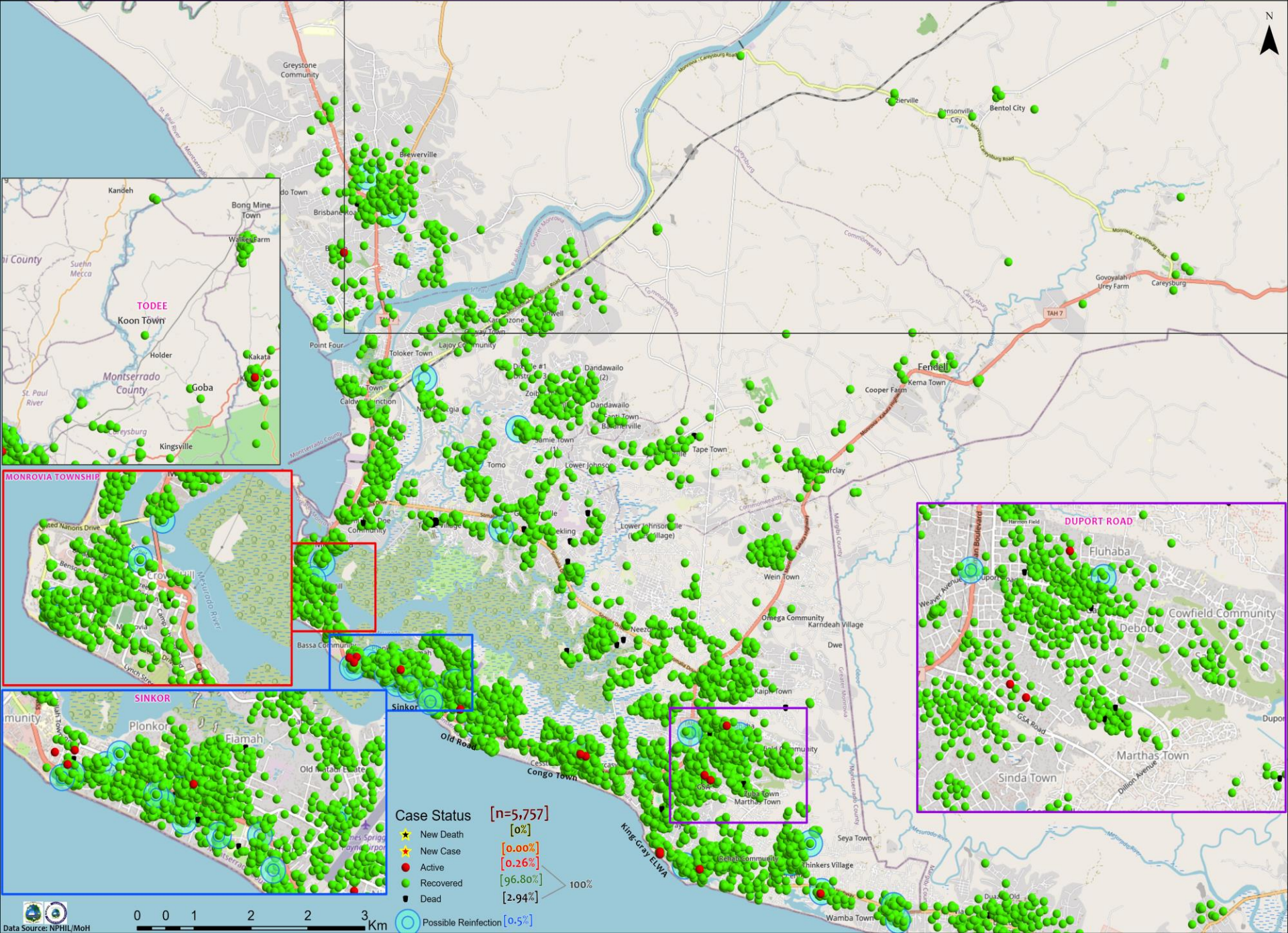
- Active [0.23%]
- Recovered [95.82%]
- Dead [3.95%]

**Cases / District**

- 0
- 1-10
- 11-50
- 51-500
- 501-1000
- 1001-1500
- 1501-2000



# Distribution of COVID-19 Cases in Montserrado Communities, Liberia May 9, 2022



**Case Status** [n=5,757]

★ New Death	[0%]
★ New Case	[0.00%]
● Active	[0.26%]
● Recovered	[96.80%]
■ Dead	[2.94%]
○ Possible Reinfection	[0.5%]

100%

**Summary of confirmed, recovered, active, and dead cases by reporting counties, Liberia, 16 March 2020 – 9 May 2022**

County	Confirmed Cases		Recovered Cases		Active Cases	Dead Cases	
	New	Cum	New	Cum		New	Cum
Bomi	0	64	0	62	0	0	2
Bong	0	149	0	129	0	0	20
Gbarpolu	0	62	0	60	0	0	2
Grand Bassa	0	109	0	103	0	0	6
Grand Cape Mount	0	61	0	61	0	0	0
Grand Gedeh	0	63	0	63	0	0	0
Grand Kru	0	26	0	26	0	0	0
Lofa	0	165	0	130	0	0	35
Margibi	0	298	0	290	1	0	7
Maryland	0	359	0	345	0	0	14
Montserrado	0	5757	0	5573	15	0	169
Nimba	0	240	0	206	1	0	33
Rivercess	0	16	0	13	0	0	3
River Gee	0	69	0	68	0	0	1
Sinoe	0	13	0	11	0	0	2
<b>National</b>	<b>0</b>	<b>7451</b>	<b>0</b>	<b>7140</b>	<b>17</b>	<b>0</b>	<b>294</b>



## Home-Base Care of COVID-19 – 9 May 2022

County	New Admissions	Currently in Admissions	No. Followed-up (In-person/Phone)	Cumulative Admissions	New Recoveries	Cumulative Recoveries	Referrals to TU	Cumulative Referrals to TU	New Death	Cumulative Deaths
Montserrat	0	0	0	2239	0	2210	0	29	0	0
Nimba	0	0	0	108	0	96				
Bong				0						
Maryland	0	0								
Cape Mount										
Lofa										
Margibi	0	0		1	0	1				
<b>Total:</b>	0	0	0	2348	0	2307	0	29	0	0

# Laboratory Samples Evaluated – 9 May 2022

County	Sample Evaluated	New Positive	Repeat Positive	Initial Negative	Repeat Test Negative	Pending Lab Result
Grand Bassa	2	0	0	2	0	0
Grand Cape Mount	1	0	0	1	0	0
Margibi	4	0	0	4	0	0
Montserrado	108	0	0	108	0	0
Nimba	2	0	0	2	0	0
<b>Total</b>	<b>117</b>	<b>0</b>	<b>0</b>	<b>117</b>	<b>0</b>	<b>0</b>
Outgoing Travelers	116	0	0	116	0	0
Contact	1	0	0	1	0	0
NRL	53	0	0	52	0	0
Union Testing Center (RDT)	62	0	0	62	0	0
UN Clinic	2	0	0	2	0	0



# Summary of COVID-19 Contact Tracing in Response Counties

County	New Contacts Line listed	Cumulative Contacts	No. of Health Care Workers as Contacts	Cumulative no. of Health Care Workers as contacts	Contacts became a case	Cumulative contacts that became a case	Contacts Completed 14 Days	Cumulative Contacts Completing 14 Days	Contacts Under Follow-up	Contacts lost to Follow-up
<b>Montserratado</b>	0	10306	0	794	0	250	0	10306	0	0
<b>Margibi</b>	0	1895	0	135	0	44	0	1895	0	0
<b>Grand Bassa</b>	0	438	0	150	0	63	0	438	0	0
<b>Sinoe</b>	0	229	0	35	0	4	0	229	0	0
<b>Lofa</b>	0	758	0	103	0	34	0	758	0	0
<b>Nimba</b>	0	1171	0	149	0	25	0	1171	0	0
<b>Bong</b>	0	539	0	73	0	28	0	539	0	0
<b>Gbarpolu</b>	0	133	0	13	0	8	0	133	0	0
<b>Grand Cape Mount</b>	0	248	0	0	0	6	0	248	0	0
<b>RiverGee</b>	0	133	0	15	0	31	0	133	0	0
<b>Maryland</b>	0	793	0	86	0	24	0	793	0	0
<b>Bomi</b>	0	289	0	24	0	52	0	289	0	0
<b>Rivercess</b>	0	102	0	62	0	6	0	102	0	0
<b>Grand Kru</b>	0	333	0	131	0	17	0	333	0	0
<b>Grand Gedeh</b>	0	286	0	2	0	9	0	286	0	0
<b>National</b>	<b>0</b>	<b>17653</b>	<b>0</b>	<b>1772</b>	<b>0</b>	<b>601</b>	<b>0</b>	<b>17653</b>	<b>0</b>	<b>0</b>



**Thank you for Listening**