



Liberia COVID-19 Daily Sitrep 856 (July 19, 2022)

Summary of COVID-19 Cases by Reporting County, Liberia, 16 March 2020 – 19 July 2022

County	Laboratory Confirmed Cases	Confirmed Cases on Contact List	Confirmed Cumulative Cases
Bomi	0	0	64
Bong	0	0	149
Gbarpolu	0	0	62
Grand Bassa	0	0	110
Grand Cape Mount	0	0	61
Grand Kru	0	0	26
Grand Gedeh	0	0	63
Lofa	0	0	165
Margibi	0	0	302
Maryland	0	0	360
Montserrado	1	0	5812
Nimba	0	0	240
Rivercess	0	0	16
River Gee	0	0	69
Sinoe	0	0	13
NATIONAL	1	0	7512

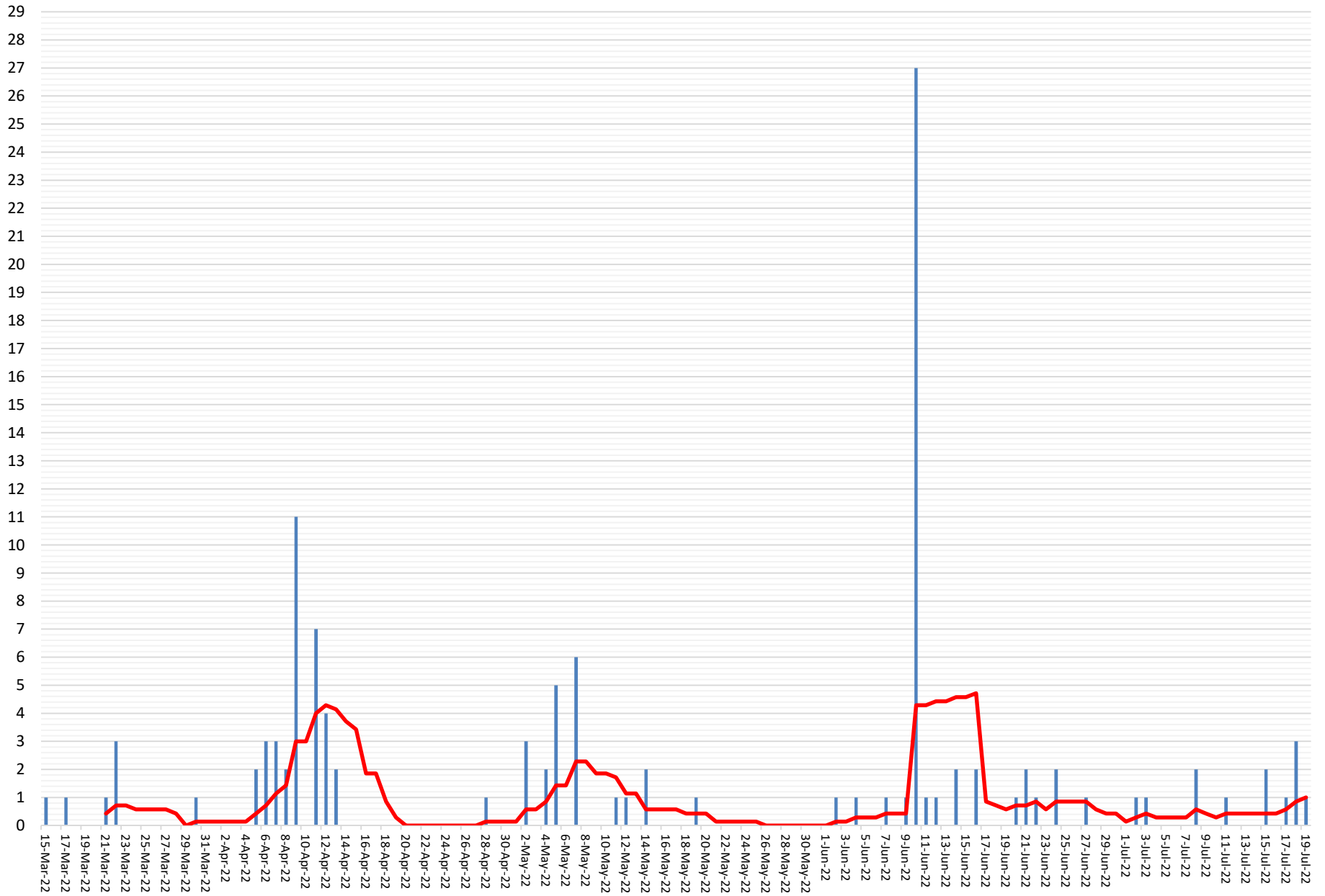
Summary of COVID-19 Deaths by Reporting County, Liberia, 16 March 2020 – 19 July 2022

County	ew Suspected Deaths	COVID-19 Treatment Unit	Total in COVID-19 Treatment Unit	Health Facility	Total in Health Facility	Community	Total in Community	Confirmed Deaths on Contact List	Cumulative Deaths
Bomi	0	0	0	0	2	0	0	0	2
Bong	0	0	4	0	13	0	3	0	20
Gbarpolu	0	0	0	0	2	0	0	0	2
Grand Bassa	0	0	0	0	6	0	0	0	6
Grand Cape Mount	0	0	0	0	0	0	0	0	0
Grand Gedeh	0	0	0	0	0	0	0	0	0
Grand Kru	0	0	0	0	0	0	0	0	0
Lofa	0	0	3	0	18	0	14	0	35
Maryland	0	0	4	0	8	0	2	0	14
Margibi	0	0	2	0	5	0	0	0	7
Montserrado	0	0	46	0	105	0	18	0	169
Nimba	0	0	8	0	21	0	4	0	33
Rivercess	0	0	0	0	2	0	1	0	3
River Gee	0	0	1	0	0	0	0	0	1
Sinoe	0	0	0	0	2	0	0	0	2
National	0	0	68	0	184	0	42	0	294

Daily and Cumulative Healthcare Worker (HCW) COVID-19 Cases and Deaths by County, Liberia, 16 March 2020 – 19 July 2022

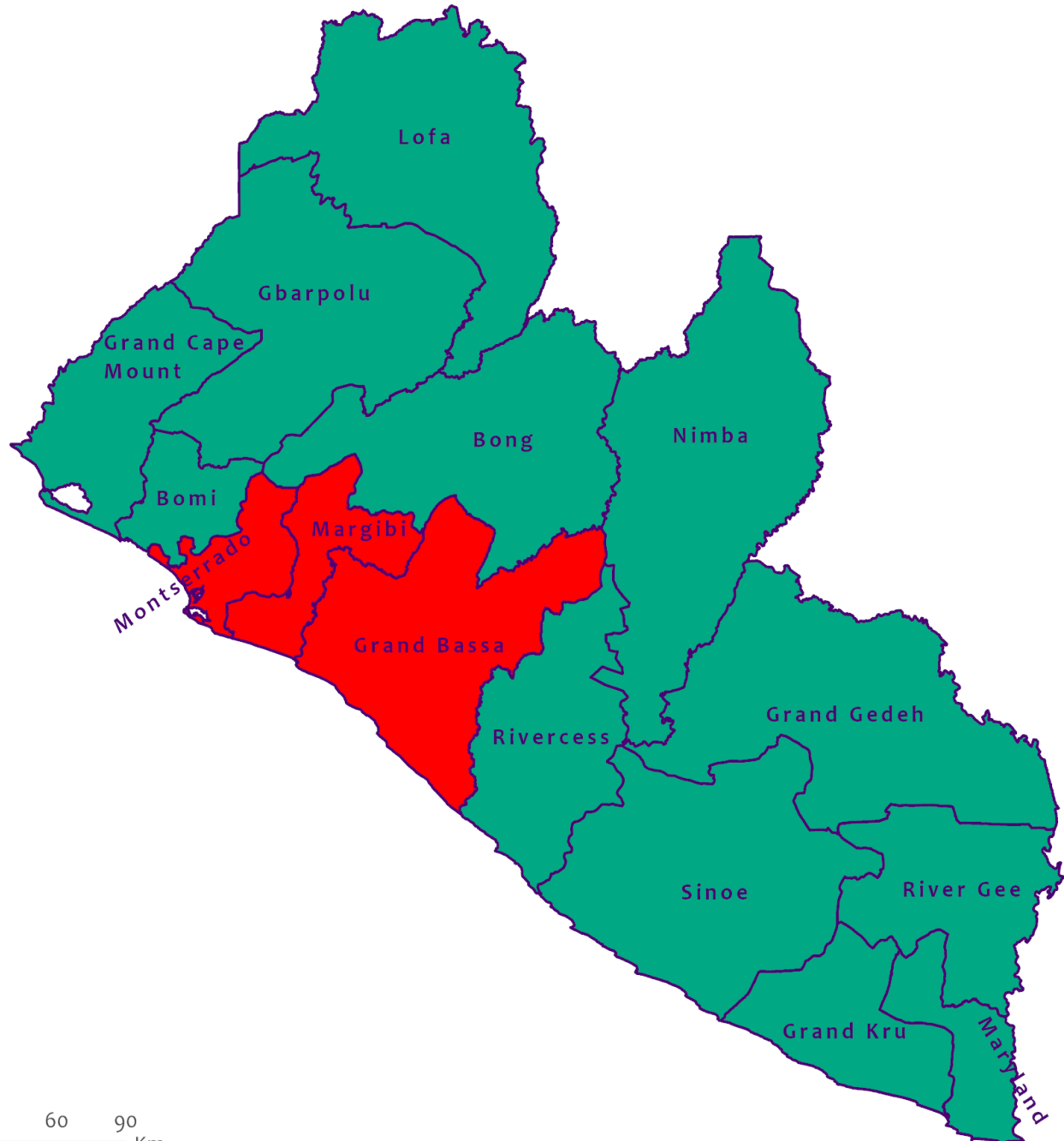
County	New Suspected & High Risk Cases (Alive)			New Suspect Death	Laboratory Confirmed Cases	Confirmed Cases on Contact List	CUMULATIVE CASES (ALIVE & DEAD)	
	Suspect	High Risk	Total				Confirmed	Deaths
Bomi	0	0	0	0	0	0	19	0
Bong	0	0	0	0	0	0	30	4
Gbarpolu	0	0	0	0	0	0	1	1
Grand Bassa	0	0	0	0	0	0	26	0
Grand Gedeh	0	0	0	0	0	0	2	0
Grand Kru	0	0	0	0	0	0	14	0
Grand Cape Mount	0	0	0	0	0	0	0	0
Lofa	0	0	0	0	0	0	30	0
Margibi	0	0	0	0	0	0	22	1
Maryland	0	0	0	0	0	0	39	0
Montserrado	0	0	0	0	0	0	172	2
Nimba	0	0	0	0	0	0	30	0
Rivercess	0	0	0	0	0	0	6	0
River Gee	0	0	0	0	0	0	10	0
Sinoe	0	0	0	0	0	0	3	0
NATIONAL	0	0	0	0	0	0	404	8

Covid-19 Daily Cases & 7 Days Moving Average





COVID-19 Status in Liberia by County July 19 2022



Legend

County Status

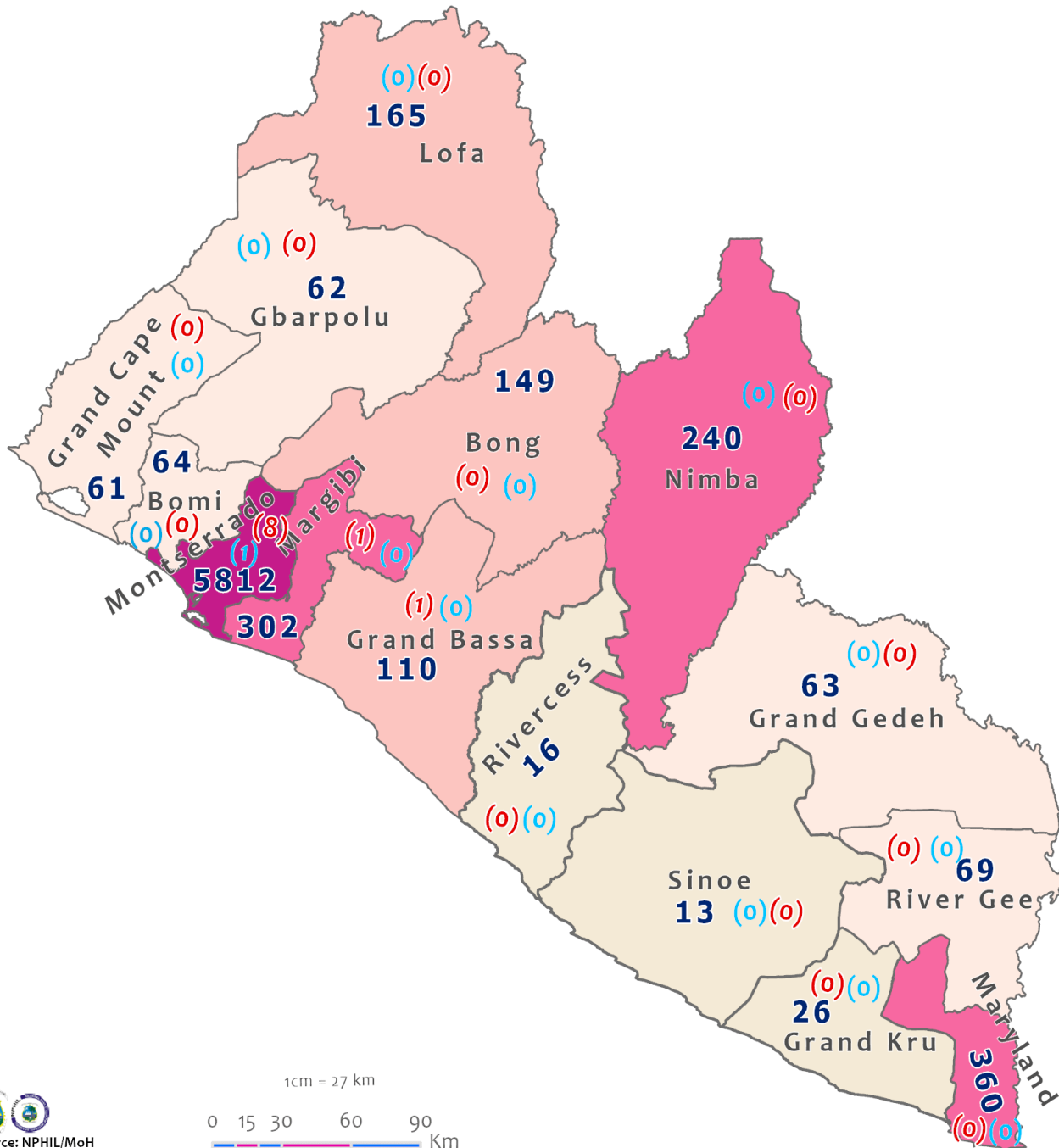
- Preparedness
- 14-Day Countdown
- Response



Data Source: NPHIL/MoH



Distribution of COVID-19 Cases by County in Liberia July 19, 2022



Total cumulative cases:

7,512

Total active cases:

10

Total new cases:

1

Legend

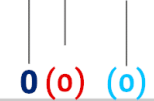
Number of Cases

- 1 - 50
- 51 - 100
- 101 - 200
- 201 - 500
- 501 - 6000

Cumulative cases

Active cases

New cases



1cm = 27 km



COVID-19 Cases by District in Liberia - July 19, 2022



Total Cases: 7,512

Affected Counties	Cumulative Cases
Montserrado	5,812
Maryland	360
Margibi	302
Nimba	240
Lofa	165
Bong	149
Grand Bassa	110
River Gee	69
Bomi	64
Grand Gedeh	63
Gbarpolu	62
Grand Cape	61
Mount	61
Grand Kru	26
Rivercess	16
Sinoe	13

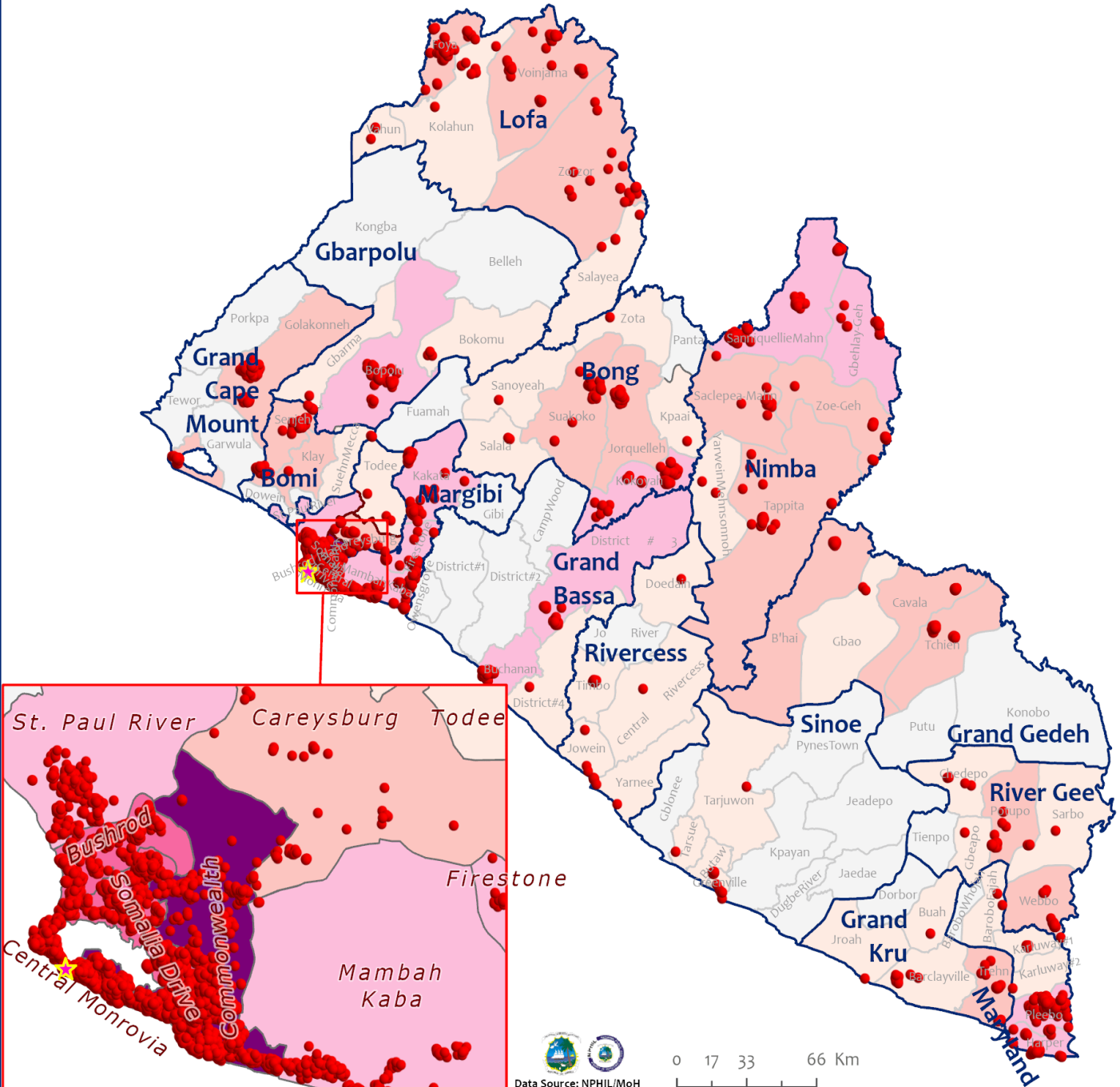
Legend

Case Status

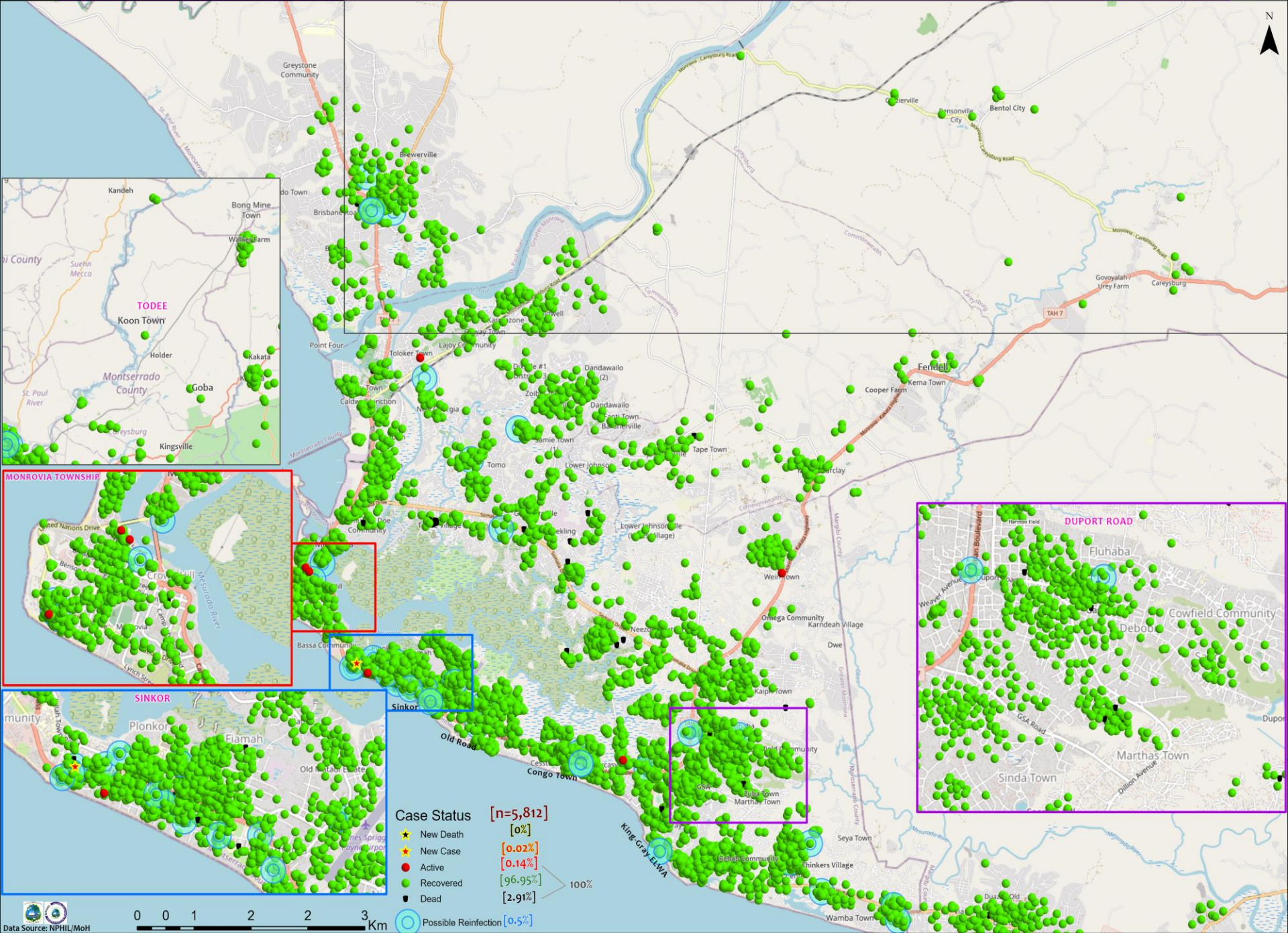
- ★ New confirmed case
- Confirmed cases

Cases / District

- 0
- 1-10
- 11-50
- 51-500
- 501-1000
- 1001-1500
- 1501-2000



Distribution of COVID-19 Cases in Montserrado Communities, Liberia July 19, 2022



Case Status [n=5,812]

★ New Death	[0%]
★ New Case	[0.02%]
● Active	[96.95%]
● Recovered	[2.91%]
● Dead	[0.5%]

100%

Summary of confirmed, recovered, active, and dead cases by reporting counties, Liberia, 16 March 2020 – 19 July 2022

County	Confirmed Cases		Recovered Cases		Active Cases	Dead Cases	
	New	Cum	New	Cum		New	Cum
Bomi	0	64	0	62	0	0	2
Bong	0	149	0	129	0	0	20
Gbarpolu	0	62	0	60	0	0	2
Grand Bassa	0	110	0	103	1	0	6
Grand Cape Mount	0	61	0	61	0	0	0
Grand Gedeh	0	63	0	63	0	0	0
Grand Kru	0	26	0	26	0	0	0
Lofa	0	165	0	130	0	0	35
Margibi	0	302	0	294	1	0	7
Maryland	0	360	0	346	0	0	14
Montserrado	1	5812	0	5635	8	0	169
Nimba	0	240	0	207	0	0	33
Rivercess	0	16	0	13	0	0	3
River Gee	0	69	0	68	0	0	1
Sinoe	0	13	0	11	0	0	2
National	1	7512	0	7208	10	0	294

Home-Base Care of COVID-19 – 19 July 2022

County	New Admissions	Currently in Admissions	No. Followed-up (In-person/Phone)	Cumulative Admissions	New Recoveries	Cumulative Recoveries	Referrals to TU	Cumulative Referrals to TU	New Death	Cumulative Deaths
Montserrat	0	0	0	2239	0	2210	0	29	0	0
Nimba	0	0	0	108	0	96				
Bong				0						
Maryland	0	0								
Cape Mount										
Lofa										
Margibi	0	0		1	0	1				
Total:	0	0	0	2348	0	2307	0	29	0	0

Laboratory Samples Evaluated – 19 July 2022

County	Sample Evaluated	New Positive	Repeat Positive	Initial Negative	Repeat Test Negative	Pending Lab Result
Bong	1	0	0	1	0	0
Margibi	1	0	0	1	0	0
Montserrado	57	1	1	55	0	0
Nimba	1	0	0	1	0	0
Total	60	1	1	58	0	0
Outgoing Travelers	40	1	0	39	0	0
Voluntary testing	13	0	0	13	0	0
Suspected case	1	0	0	1	0	0
Contacts	6	1	0	5	0	0
NRL	48	0	1	47	0	0
UN Clinic	12	1	0	11	0	0
US Embassy Lab	0	0	0	0	0	0

Summary of COVID-19 Contact Tracing in Response Counties

County	New Contacts Line listed	Cumulative Contacts	No. of Health Care Workers as Contacts	Cumulative no. of Health Care Workers as contacts	Contacts became a case	Cumulative contacts that became a case	Contacts Completed 14 Days	Cumulative Contacts Completing 14 Days	Contacts Under Follow-up	Contacts lost to Follow-up
Montserrado	0	10306	0	794	0	250	0	10306	0	0
Margibi	0	1895	0	135	0	44	0	1895	0	0
Grand Bassa	0	438	0	150	0	63	0	438	0	0
Sinoe	0	229	0	35	0	4	0	229	0	0
Lofa	0	758	0	103	0	34	0	758	0	0
Nimba	0	1171	0	149	0	25	0	1171	0	0
Bong	0	539	0	73	0	28	0	539	0	0
Gbarpolu	0	133	0	13	0	8	0	133	0	0
Grand Cape Mount	0	248	0	0	0	6	0	248	0	0
RiverGee	0	133	0	15	0	31	0	133	0	0
Maryland	0	797	0	86	0	24	0	797	0	0
Bomi	0	289	0	24	0	52	0	289	0	0
Rivercess	0	102	0	62	0	6	0	102	0	0
Grand Kru	0	333	0	131	0	17	0	333	0	0
Grand Gedeh	0	286	0	2	0	9	0	286	0	0
National	0	17657	0	1772	0	601	0	17657	0	0

Thank you for Listening