



Liberia COVID-19 Daily Sitrep 913 (September 14, 2022)

Summary of COVID-19 Cases by Reporting County, Liberia, 16 March 2020 – 14 September 2022

County	Laboratory Confirmed Cases	Confirmed Cases on Contact List	Confirmed Cumulative Cases
Bomi	0	0	65
Bong	0	0	170
Gbarpolu	0	0	62
Grand Bassa	0	0	110
Grand Cape Mount	0	0	61
Grand Kru	0	0	26
Grand Gedeh	0	0	63
Lofa	0	0	165
Margibi	0	0	317
Maryland	0	0	362
Montserrado	4	0	6148
Nimba	0	0	310
Rivercess	0	0	16
River Gee	0	0	69
Sinoe	0	0	13
NATIONAL	4	0	7957

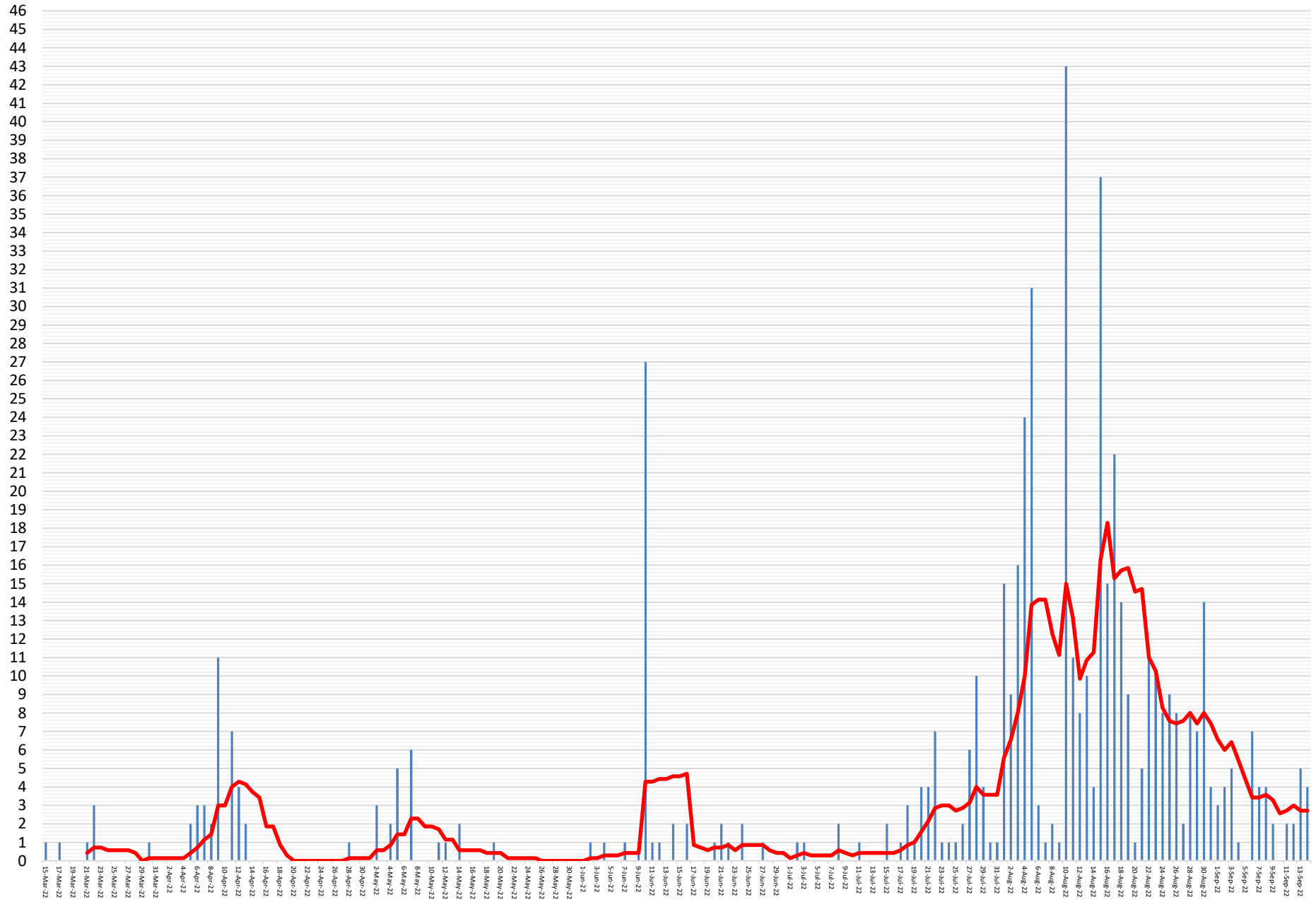
Summary of COVID-19 Deaths by Reporting County, Liberia, 16 March 2020 – 14 September 2022

County	ew Suspected Deaths	COVID-19 Treatment Unit	Total in COVID-19 Treatment Unit	Health Facility	Total in Health Facility	Community	Total in Community	Confirmed Deaths on Contact List	Cumulative Deaths
Bomi	0	0	0	0	2	0	0	0	2
Bong	0	0	4	0	13	0	3	0	20
Gbarpolu	0	0	0	0	2	0	0	0	2
Grand Bassa	0	0	0	0	6	0	0	0	6
Grand Cape Mount	0	0	0	0	0	0	0	0	0
Grand Gedeh	0	0	0	0	0	0	0	0	0
Grand Kru	0	0	0	0	0	0	0	0	0
Lofa	0	0	3	0	18	0	14	0	35
Maryland	0	0	4	0	8	0	2	0	14
Margibi	0	0	2	0	5	0	0	0	7
Montserrado	0	0	46	0	105	0	18	0	169
Nimba	0	0	8	0	21	0	4	0	33
Rivercess	0	0	0	0	2	0	1	0	3
River Gee	0	0	1	0	0	0	0	0	1
Sinoe	0	0	0	0	2	0	0	0	2
National	0	0	68	0	184	0	42	0	294

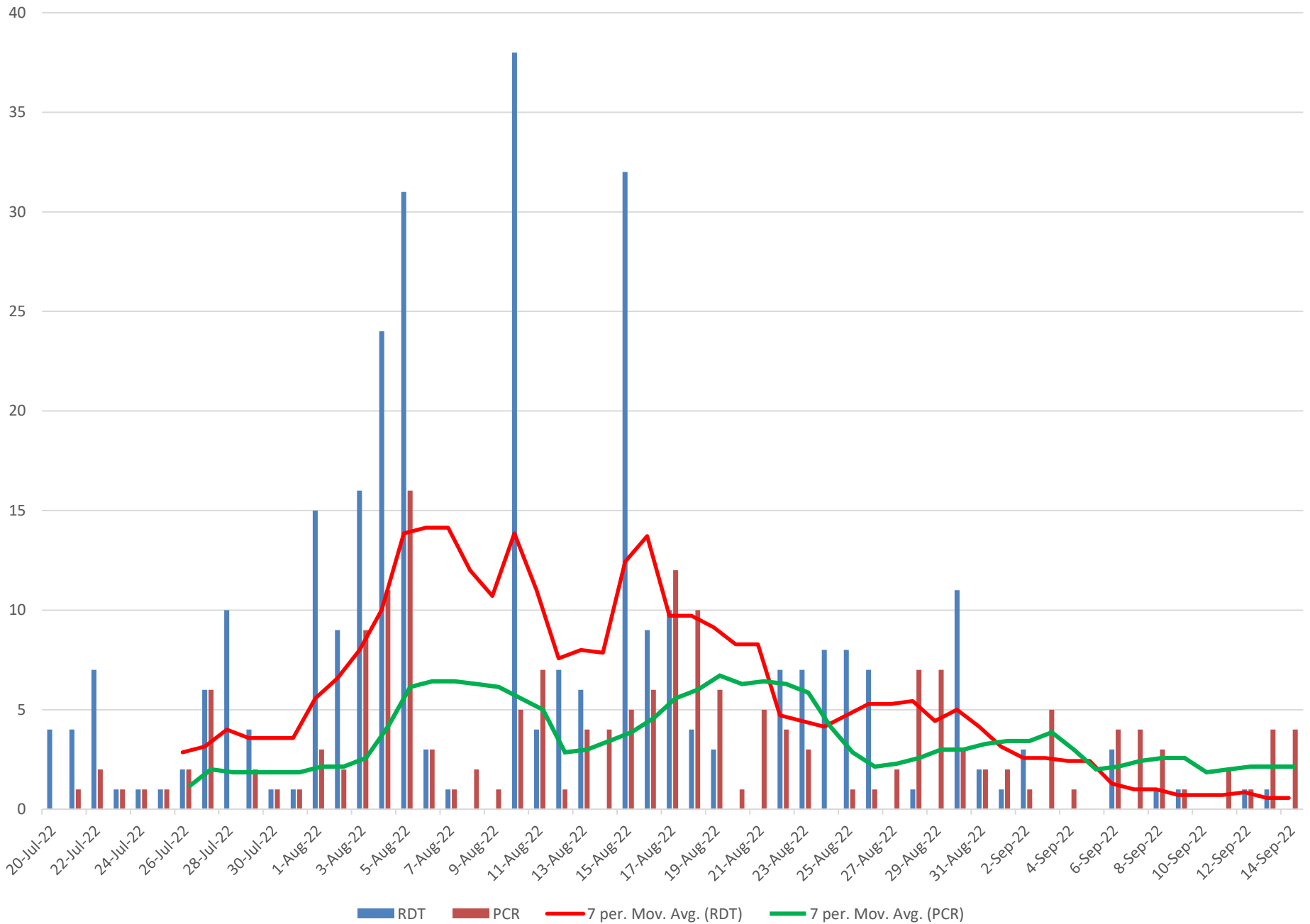
Daily and Cumulative Healthcare Worker (HCW) COVID-19 Cases and Deaths by County, Liberia, 16 March 2020 – 14 September 2022

County	New Suspected & High Risk Cases (Alive)			New Suspect Death	Laboratory Confirmed Cases	Confirmed Cases on Contact List	CUMULATIVE CASES (ALIVE & DEAD)	
	Suspect	High Risk	Total				Confirmed	Deaths
Bomi	0	0	0	0	0	0	19	0
Bong	0	0	0	0	0	0	30	4
Gbarpolu	0	0	0	0	0	0	1	1
Grand Bassa	0	0	0	0	0	0	26	0
Grand Gedeh	0	0	0	0	0	0	2	0
Grand Kru	0	0	0	0	0	0	14	0
Grand Cape Mount	0	0	0	0	0	0	0	0
Lofa	0	0	0	0	0	0	30	0
Margibi	0	0	0	0	0	0	22	1
Maryland	0	0	0	0	0	0	39	0
Montserrado	0	0	0	0	0	0	172	2
Nimba	0	0	0	0	0	0	30	0
Rivercess	0	0	0	0	0	0	6	0
River Gee	0	0	0	0	0	0	10	0
Sinoe	0	0	0	0	0	0	3	0
NATIONAL	0	0	0	0	0	0	404	8

Covid-19 Daily Cases & 7 Days Moving Average



PCR vs RDT (Enhanced Surv.) Positive Tests





COVID-19 Status in Liberia by County September 14, 2022



Legend

County Status

- Preparedness
- 14-Day Countdown
- Response

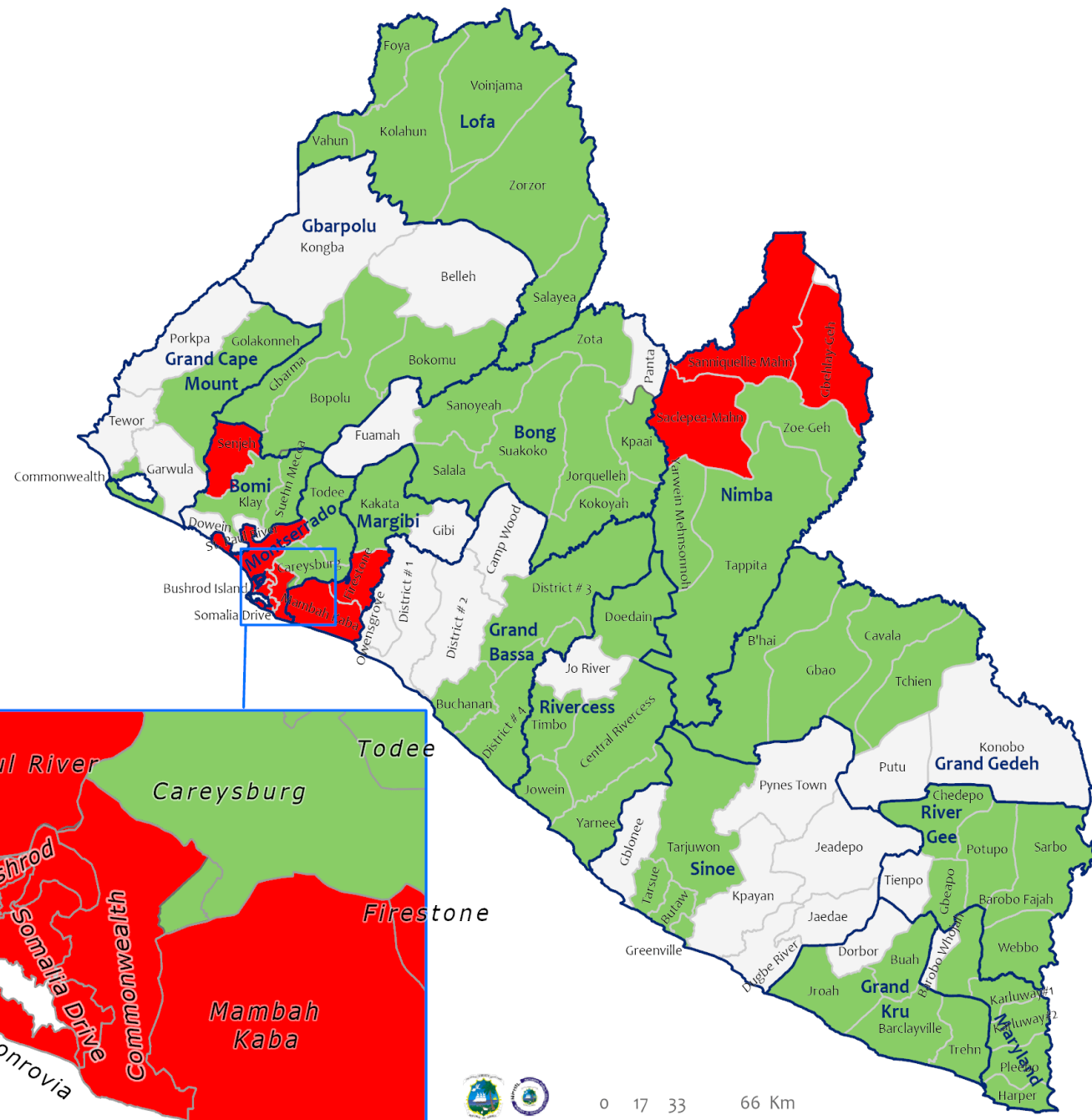


COVID-19 Status in Liberia by District September 14, 2022



Total Cases: 7,957

Affected Counties	Cumulative Cases
Montserrado	6,148
Maryland	362
Margibi	317
Nimba	310
Bong	170
Lofa	165
Grand Bassa	110
River Gee	69
Bomi	65
Grand Gedeh	63
Gbarpolu	62
Grand Cape	61
Grand Kru	26
Rivercess	16
Sinoe	13

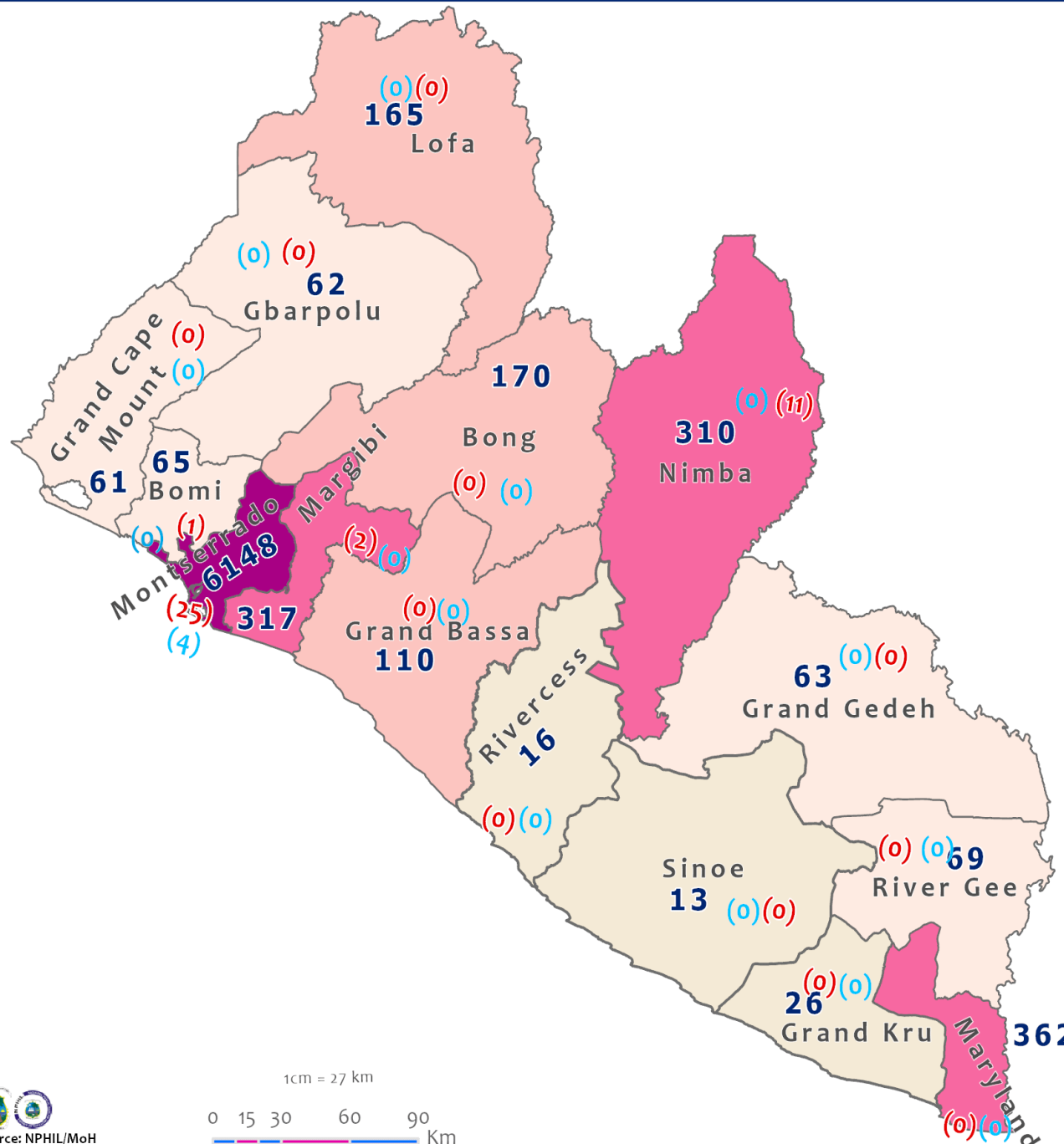


Legend

District Status

- Never had a case
- Back from recovery or first time with active case(s)
- With active cases(s)
- With recovered cases only

Distribution of COVID-19 Cases by County in Liberia September 14, 2022



Total cumulative cases:
7,957

Total active cases:
39

Total new cases:
4

Legend

Number of Cases

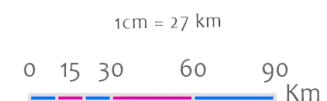
- 1 - 50
- 51 - 100
- 101 - 200
- 201 - 500
- >500

Cumulative cases

Active cases

New cases

0 (0) (0)



Distribution of COVID-19 Cases by County in Liberia September 14, 2022



Total Cases: 7,957

Affected Counties	Cumulative Cases
Montserrado	6,148
Maryland	362
Margibi	317
Nimba	310
Bong	170
Lofa	165
Grand Bassa	110
River Gee	69
Bomi	65
Grand Gedeh	63
Gbarpolu	62
Grand Cape Mount	61
Grand Kru	26
Rivercess	16
Sinoe	13

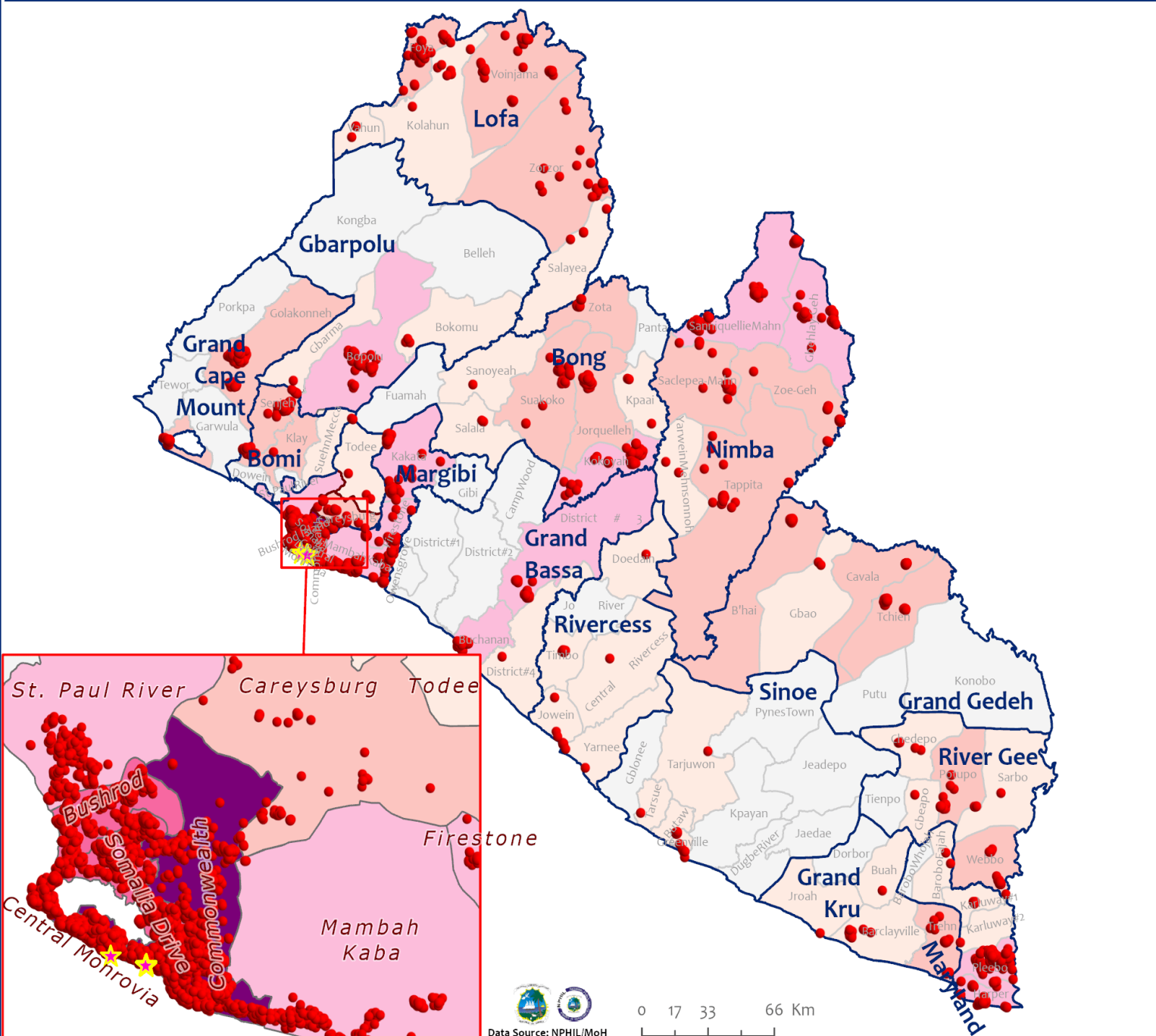
Legend

Case Status

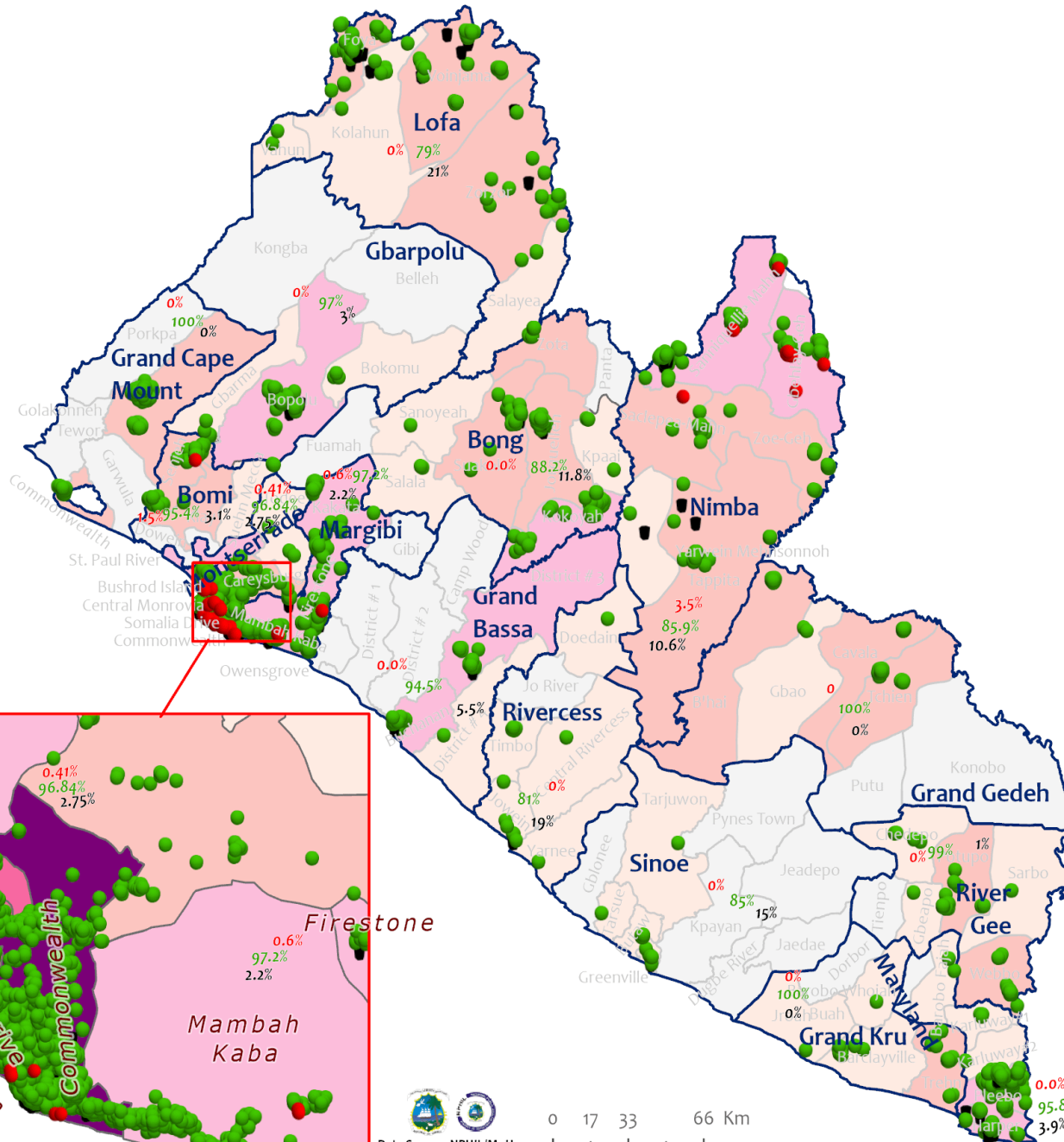
- ★ New confirmed case
- Confirmed cases

Cases / District

- 0
- 1-10
- 11-50
- 51-500
- 501-1000
- 1001-1500
- 1501-2000



Percent Distribution of COVID-19 Cases by Status in Liberia - September 14, 2022



Total Cases: 7,957

Affected Counties	Cumulative Cases
Montserrado	6,148
Maryland	362
Margibi	317
Nimba	310
Bong	170
Lofa	165
Grand Bassa	110
River Gee	69
Bomi	65
Grand Gedeh	63
Gbarpolu	62
Grand Cape Mount	61
Grand Kru	26
Rivercess	16
Sinoe	13

Legend

Case Status

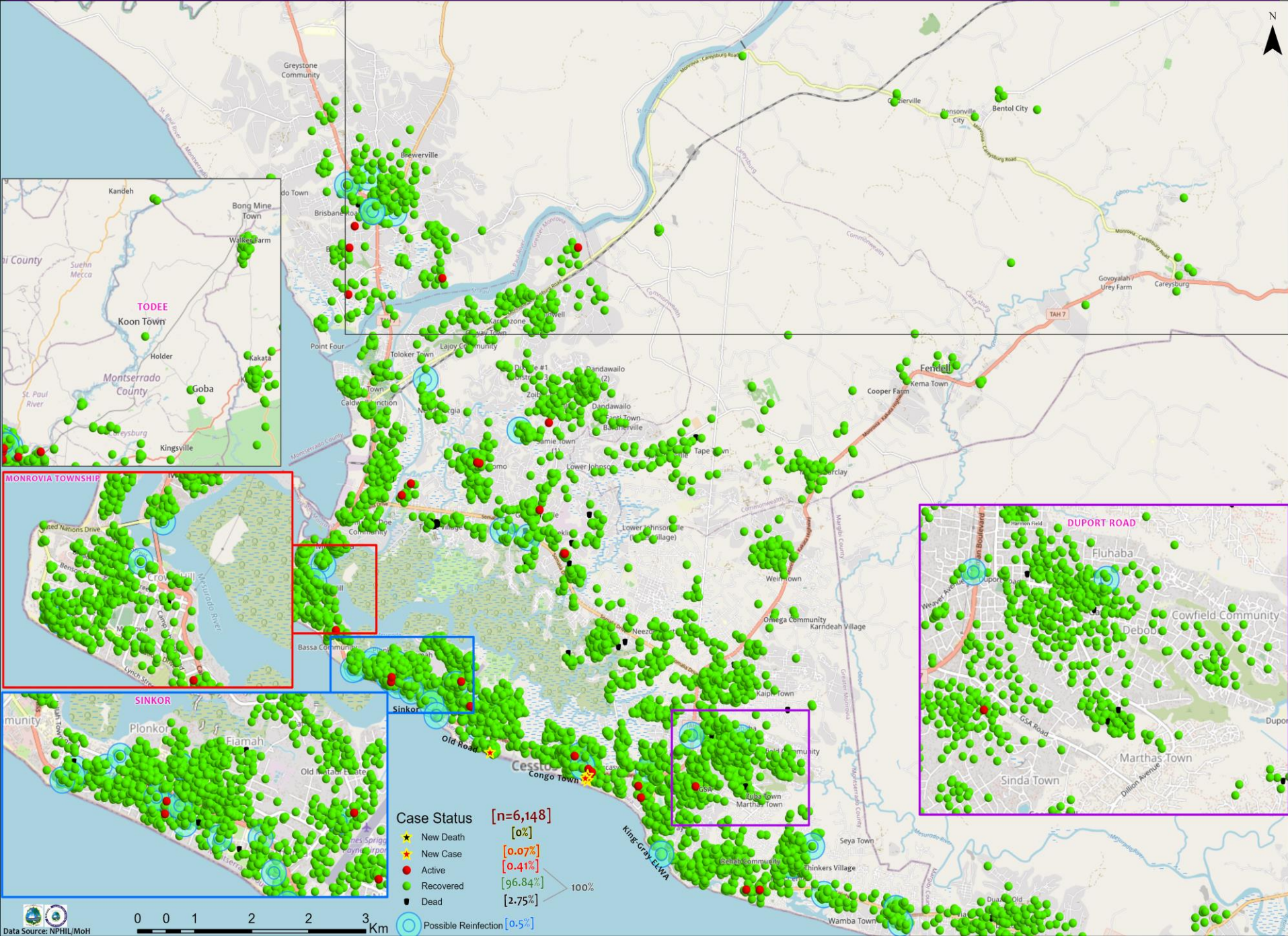
- Active
- Recovered
- Dead

[0.49%]
[95.82%]
[3.69%]

Cases / District

- 0
- 1-10
- 11-50
- 51-500
- 501-1000
- 1001-1500
- 1501-2000

Distribution of COVID-19 Cases in Montserrado Communities, Liberia September 14, 2022



Case Status [n=6,148]

★ New Death	[0%]
★ New Case	[0.07%]
● Active	[0.41%]
● Recovered	[96.84%]
■ Dead	[2.75%]
○ Possible Reinfection	[0.5%]

100%

Summary of confirmed, recovered, active, and dead cases by reporting counties, Liberia, 16 March 2020 – 14 September 2022

County	Confirmed Cases		Recovered Cases		Active Cases	Dead Cases	
	New	Cum	New	Cum		New	Cum
Bomi	0	65	0	62	1	0	2
Bong	0	170	0	150	0	0	20
Gbarpolu	0	62	0	60	0	0	2
Grand Bassa	0	110	0	104	0	0	6
Grand Cape Mount	0	61	0	61	0	0	0
Grand Gedeh	0	63	0	63	0	0	0
Grand Kru	0	26	0	26	0	0	0
Lofa	0	165	0	130	0	0	35
Margibi	0	317	0	308	2	0	7
Maryland	0	362	0	348	0	0	14
Montserrado	4	6148	3	5954	25	0	169
Nimba	0	310	0	266	11	0	33
Rivercess	0	16	0	13	0	0	3
River Gee	0	69	0	68	0	0	1
Sinoe	0	13	0	11	0	0	2
National	4	7957	3	7624	39	0	294

Home-Base Care of COVID-19 – 14 September 2022

County	New Admissions	Currently in Admissions	No. Followed-up (In-person/Phone)	Cumulative Admissions	New Recoveries	Cumulative Recoveries	Referrals to TU	Cumulative Referrals to TU	New Death	Cumulative Deaths
Montserrat	0	0	0	2239	0	2210	0	29	0	0
Nimba	0	0	0	108	0	96				
Bong				0						
Maryland	0	0								
Cape Mount										
Lofa										
Margibi	0	0		1	0	1				
Total:	0	0	0	2348	0	2307	0	29	0	0

Laboratory Samples Evaluated – 14 Sept 2022

County	Sample Evaluated	New Positive	Repeat Positive	Initial Negative	Repeat Test Negative	Pending Lab Result
Grand Bassa	4	0	0	4	0	0
Margibi	2	0	0	2	0	0
Montserrado	30	4	1	25	0	0
Nimba	0	0	0	0	0	0
Total	36	4	1	31	0	0
Outgoing Travelers	25	0	0	25	0	0
Voluntary testing	11	4	1	6	0	0
Contact	0	0	0	0	0	0
NRL	36	4	1	31	0	0
UN Clinic	0	0	0	0	0	0
US Embassy Lab	0	0	0	0	0	0

Summary of COVID-19 Contact Tracing in Response Counties

County	New Contacts Line listed	Cumulative Contacts	No. of Health Care Workers as Contacts	Cumulative no. of Health Care Workers as contacts	Contacts became a case	Cumulative contacts that became a case	Contacts Completed 14 Days	Cumulative Contacts Completing 14 Days	Contacts Under Follow-up	Contacts lost to Follow-up
Montserratado	0	10407	0	794	0	250	0	10359	48	0
Margibi	0	1862	0	135	0	44	0	1895	7	0
Grand Bassa	0	438	0	150	0	63	0	438	0	0
Sinoe	0	229	0	35	0	4	0	229	0	0
Lofa	0	758	0	103	0	34	0	758	0	0
Nimba	0	1267	0	149	0	25	0	1183	84	0
Bong	0	539	0	73	0	28	0	539	0	0
Gbarpolu	0	133	0	13	0	8	0	133	0	0
Grand Cape Mount	0	248	0	0	0	6	0	248	0	0
RiverGee	0	133	0	15	0	31	0	133	0	0
Maryland	0	803	0	86	0	24	0	803	0	0
Bomi	0	289	0	24	0	52	0	289	0	0
Rivercess	0	102	0	62	0	6	0	102	0	0
Grand Kru	0	333	0	131	0	17	0	333	0	0
Grand Gedeh	0	286	0	2	0	9	0	286	0	0
National	0	17827	0	1772	0	601	0	17728	139	0

Thank you for Listening